



POTTER

*The Symbol of Protection*

Canadian  
Fire & Security  
Product Catalog

# Table of Contents

## Fire Products

PFC-8500 Analog Addressable FACP .....	4
Sprinkler Monitoring Panel .....	4
Panel Devices & Accessories .....	5
Addressable Detectors & Bases .....	6
Addressable Modules .....	7
Conventional Fire Panels.....	8
Conventional Panel Accessories .....	10
Conventional Detectors .....	12
Duct Detectors & Accessories .....	13
Fire Pull Stations.....	14
Special Application Pull Stations .....	15
Power Supplies .....	16
Horns & Bells.....	17
Mini-Horn & Accessories .....	18
Ceiling Mount Chimes & Strobes .....	19
Wall Mount Strobe/Horns .....	20
Wall Mount Strobes .....	21
Mass Notification Appliances.....	22
Notification Accessories.....	24
Explosion Proof Devices .....	25
Fire Products List.....	26

## Security Products

Motion Detectors.....	30
Plunger Tamper Switches .....	31
Emergency Switches .....	32
Specialty Switches .....	32
Sensors.....	32
Vault & Safe Protection .....	33
Hold Up Switches.....	34
Sirens & Siren/Strobes.....	35
Speakers .....	36
Conical Strobes.....	37
General Signaling Bells .....	37
Overhead Door Contacts.....	38
Surface Mount Magnetic Contacts .....	39
Steel Door Magnetic Contacts.....	41
Piezo Sounders .....	41
High Security Contacts.....	42
Recessed Magnetic Contacts.....	43
Rare Earth Recessed Contacts.....	44
Roller Ball Switches .....	44
Door Cords.....	45
Door Announcers / People Counters .....	46
Security Products List.....	48



Potter has been a privately held company and a leader in fire protection since 1898. As a privately held business, Potter is able to quickly respond and react to our customers' needs and provide the individual attention and service that each of our customers deserve. Potter's reputation for quality and service has been the catalyst towards its focus for the design, development and manufacture of the highest quality and most reliable life safety products available today.

The fire protection industry now has a privately held company that manufactures a full line of fire alarm, notification and sprinkler system monitoring products. While Potter does address global needs in fire protection, we are positioned to provide you, the customer, with that individual attention and service that you would expect from a local supplier.

In 2004, Potter acquired American Security Equipment Company (AMSECO) to expand our fire and security product line and provide our customers with a wider variety of high quality products. The AMSECO brand name now constitutes our full line of magnetic contacts, sirens/strobes, and people counters.



In 2008, Potter acquired Elmdene International to help expand our technology and reach into the European marketplace with a vast array of power supplies, sounders, detection and hold up devices.

Potter continues to expand to bring you the technology, quality, reliability and unique products that meet the ever-growing demands of the fire protection industry. **This is the reason that Potter provides an industry leading 5-year warranty on all major products.** Potter's unequalled reputation for customer service, support and performance provides you, the customer, the individual attention necessary to compete and grow in today's demanding market.

Potter is THE Symbol of Protection.

# PFC-8500 Analog Addressable FACP

## PFC-8500



The PFC-8500 Fire Control Panel has the capability of storing setpoints, adding and removing devices as well as defining operational behavior. All changes are stored in a configuration data file, which enables the user to easily configure the system from either the FACP or at a remote computer. This flexibility allows ongoing system upgrades and modifications to support building expansion and increased safety objectives.

- 127 points expandable to 508 points
- 4 NACs rated at 1.5A
- Total power supply of 6A
- Addressable loop wiring NFPA Style 4, 6, or 7
- 120/230 VAC 50/60 HZ AC input voltage frequency
- 0.5 A at 24 VDC (20.4 to 26.4 VDC) Auxiliary Power Rating
- 2 A at 30 VDC (resistive) Dry contact output rating
- 24 VDC output wiring NFPA Style Y or Z
- Water and chemical releasing capability

## LCD Remote Annunciator

LCD-AN



- 80 Character LCD
- Full Keypad with Complete Control
- LEDs for Common Indicators
- Up to 31 per system
- Compact low profile housing

## LED Remote Annunciator

LED-AN



- 15 LED Zones for Alarm, Trouble and Supervisory Indication
- Common Control Buttons
- LEDs for Common Indicators
- Up to 31 per system
- Compact low profile housing

# Sprinkler Monitoring Panel

## Sprinkler Monitoring Panel

PFC-6006



- Built-in IP and Dual line DACT communications
- 6 programmable initiating device circuits (1 class A and 5 class B)
- 2 wire smoke detector capability
- 0.5 amp NAC circuit, .5 amp Aux Power circuit
- Email capabilities for events and reminders
- Quadrasync syncs any combination of Potter/AMSECO®, Wheelock®, Gentex®, and System Sensor®.

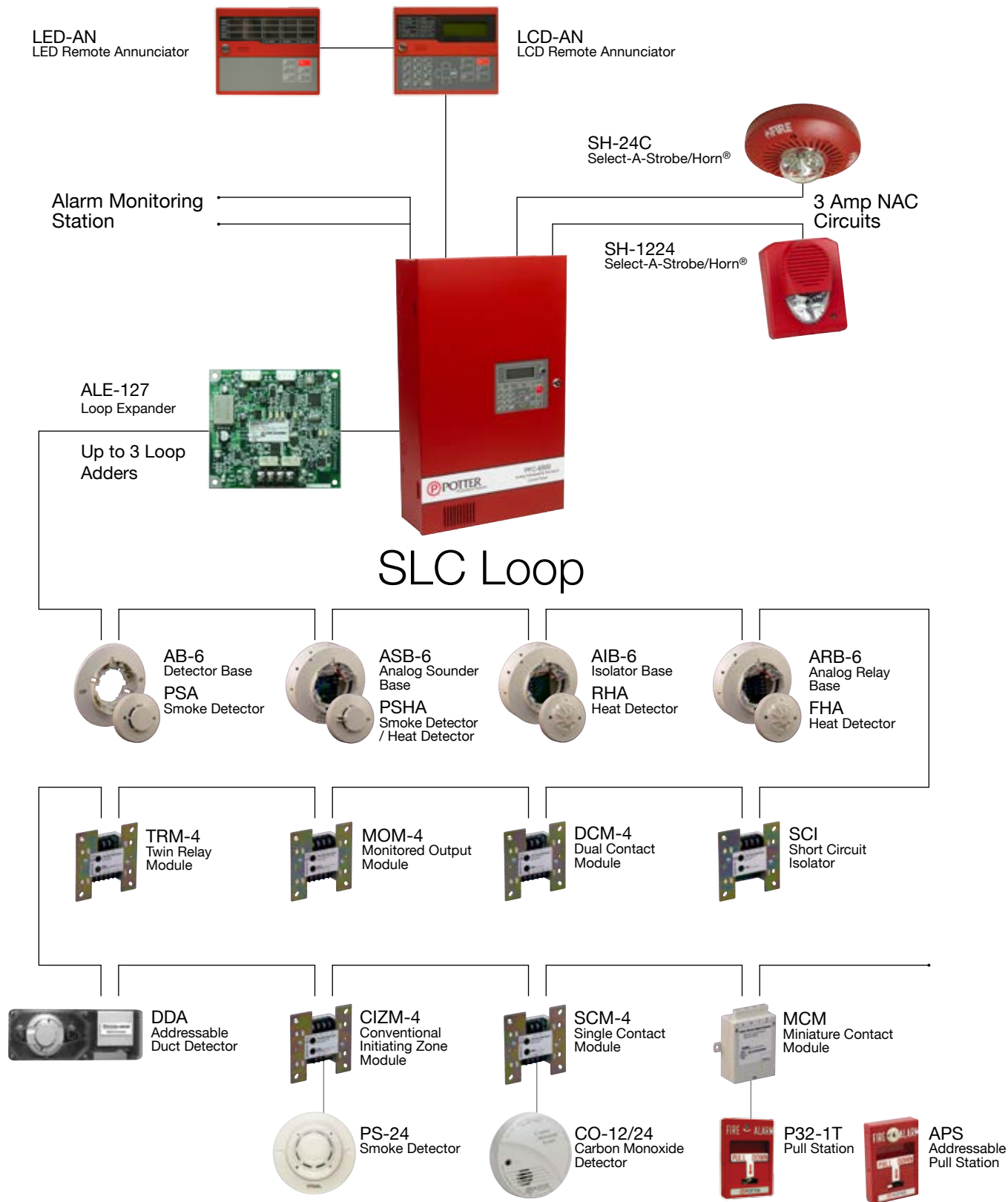
## LCD Remote Annunciator

RA-6006



- 32 Character LCD display
- Communicates using RS-485 connection
- LEDs for Common Indicators
- Up to 4 can be connected using Class B wiring
- Fore use with PFC-6006

# Panel Devices & Accessories



# Addressable Detectors & Bases

## Detector Base

AB-6



- Intuitive Terminal Marking to assist with Installation
- Will mount to Single, Double Gang, Octagon or 4" Square
- Terminals will accept 14 to 22 AWG wire

## Analog Isolator Base

AIB-6



- Isolator integrated into Base
- Self Restoring
- Amber LED indication of Short Circuit

## Analog Sounder Base

ASB-6



- Integrated Sounder in Base
- 75 dB (UL 464 listed)
- Sounder Independent of Sensor
- May be mapped to any device connected to the Control Panel

## Analog Relay Base

ARB-6



- Two form C relays as part of the base assembly
- Works independent of the sensors attached
- May be mapped to any device connected to the Control Panel
- LED to indicate that the unit is active
- Separation included in the base for high and low voltage and power limited/non-power limited connections

## Heat Detector

FHA



- 135-185° Fahrenheit Heat Sensor
- Low Profile
- Reliable Detection Technology
- LEDs for 360° viewing
- Ambient Temperature Listing of 32° F to 150° F

## Smoke / Heat Detector

PSHA



- Photoelectric Smoke and Fixed Temperature Heat Sensor
- Wide Sensitivity Range of 1.05 to 3.82%/foot
- 135° Fahrenheit restorable Heat Detector
- True Analog Sensor
- UL listed Smoke Calibration and Sensitivity

## Smoke Detector

PSA



- Low profile, less than 2 inches with the base
- Wide Sensitivity Range of 1.05 to 3.82%/foot
- True Analog Sensor
- UL listed Smoke Calibration and Sensitivity

## Addressable Duct Detector

DDA



- Detects smoke in building HVAC ducts
- Ships complete with housing and head
- Compatible with addressable PFC-6006
- SLC in and out wiring terminals
- Installation without removing the head
- Listed air velocity of 100 to 4,000 ft/minute

## Heat Detector

RHA



- Adjustable fixed 135° to 174° F
- Rate of Rise Feature
- LEDs for 360° viewing
- Low Profile
- Reliable Detection Technology

## Miniature Contact Module

MCM



- UL, cUL, and CSFM listed
- Used to monitor devices such as Pull Stations where the device can be placed in the enclosure.
- SLC wiring style is applicable to the NFPA Class A (Style 6, 7) & Class B (Style 4).
- IDC wiring style is applicable to the NFPA Class B (Style B).
- SLC loop wiring (S+, S-) and initiating device wiring (C, NO) are power limited.

## Short Circuit Isolator

SCI



- UL, cUL, and CSFM listed
- Isolates shorts within the loop
- Used to prevent loss of communication in SLC circuit
- Required with Class A, Style 7 wiring

## Dual Contact Module

DCM-4



- UL, cUL, and CSFM listed
- Two (2) Class B and one (1) Class A input module
- SLC wiring style is applicable to the NFPA Class A (Style 6, 7) & Class B (Style 4).
- IDC wiring style is applicable to the NFPA Class B (Style B) & Class A (Style D).
- SLC loop wiring (S+, S-) and initiating device wiring (C1, NO1, C2, NO2) are power limited.

## Single Contact Module

SCM-4



- UL, cUL, and CSFM listed
- For connection with Dry Contact devices (i.e. pull station, waterflow switch, etc)
- SLC wiring style is applicable to the NFPA Class A (Style 6, 7) & Class B (Style 4).
- IDC wiring style is applicable to the NFPA Class B (Style B).

## Twin Relay Module

TRM-4



- UL, cUL, and CSFM listed
- Two (2) Form C contacts
- Contacts rated at 2A at 24 VDC / 0.5A at 125 VAC
- Controlled by compatible panel
- Mounts in 4" or double gang box

## Conventional Initiating Zone Module

CIZM-4



- UL, cUL, and CSFM listed
- SLC wiring style is applicable to the NFPA Class A (Style 6, 7) & Class B (Style 4).
- IDC wiring style is applicable to the NFPA Class B (Style B) & Class A (Style D).
- Power supply for terminals 24+ and 24- must be power limited

## Addressable Pull Station

APS



- UL, cUL, and CSFM listed
- Two (2) Form C contacts
- Contacts rated at 2A at 24 VDC / 0.5A at 125 VAC
- Controlled by compatible panel
- Mounts in 4" or double gang box

## Monitored Output Module

MOM-4



- UL, cUL, and CSFM listed
- 24 VDC Monitored Output Control
- 5.1k ohm EOL
- NAC or Releasing Control
- LED indicates activation of module
- All terminals are power limited
- Listed with Potter/Amseco®, Gentex®, & Cooper Wheelock® sync modules and devices



# Conventional Fire Panels

## Conventional 2 Zone Fire Panel

PFC-3002T

- Two Class 'B' initiating circuit
- One Class 'B' indicating circuit
- Individual Zone Silence/Disconnect switches
- Powerful 3mA capacity per zone for 2-wire smoke detectors
- Common alarm Relay contact, Form C, 28 VDC @ 3 AMP (Resistive)
- Selectable 'N.O' or 'N.C' common trouble contact 28 VDC @ 3 Amp (Resistive)



## Conventional 5 Zone Fire Panel

PFC-3005T

- Five Class 'B' initiating circuit
- Two Class 'B' indicating circuit
- Individual Zone Silence/Disconnect switches
- Powerful 3mA capacity per zone for 2-wire smoke detectors
- Common alarm Relay contact, Form C, 28 VDC @ 3 AMP (Resistive)
- Selectable 'N.O' or 'N.C' common trouble contact 28 VDC @ 3 Amp (Resistive)





## PFC-5004

### Microprocessor-Based 4 Zone Fire Alarm Control Panel

- 4 Class B (Style B) or 2 Class A (Style D) initiating circuits
- 2 Class A/B (Style Z/Y) NACs
- Multiple NAC output patterns
- Selectable zone types
- Multiple signal silence options
- Listings: UL, ULC, and CSFM

## PFC-5004E

### Microprocessor-Based 4 Zone Expandable Fire Alarm Control Panel

- 4 Class B (Style B) or 2 Class A (Style D) initiating circuits
- Expandable to 8 Class B (Style B) or 4 Class A (Style D) initiating circuits
- 2 Class A/B (Style Z/Y) NACs, expandable to 4
- Multiple NAC output patterns
- Selectable zone types
- Multiple signal silence options
- Listings: UL, ULC, and CSFM

## PFC-5008

### Microprocessor-Based 8 Zone Fire Alarm Control Panel

- 8 Class B (Style B) or 4 Class A (Style D) initiating circuits
- 4 Class A/B (Style Z/Y) NACs
- Multiple NAC output patterns
- Selectable zone types
- Multiple signal silence options
- Listings: UL, ULC, and CSFM

## PFC-5008D

### Microprocessor-Based 8 Zone Fire Alarm Control Panel with DACT

- 8 Class B (Style B) or 4 Class A (Style D) initiating circuits
- 4 Class A/B (Style Z/Y) NACs
- Multiple NAC output patterns
- Selectable zone types
- Multiple signal silence options
- Listings: UL, ULC, and CSFM
- Includes DACT



UL864  
9th Edition

# Conventional Panel Accessories

## Remote Annunciator

RA8F



- 8 bicolored LEDs for alarm and supervisory conditions
- LEDs match color at panel
- Common controls protected by key switch
- Connects to panel RS-485 output
- Mounts in standard electrical boxes
- Surface mount or flush mount
- Available in Red or White
- Listings: UL, ULC, and CSFM

## Digital Alarm Communicator Transmitter

UDACT-9100



- 2-line digital alarm communicator
- Reports each zone status
- Powers directly from PFC-5000 or PFC-9000
- Supervises phone lines
- Reports in SIA DCS or Contact ID with Zone ID
- Automatic 24 hour testing
- Remote configuration and history
- Requires CFG-LCD for local programming

## Auxiliary Relay Cards

ARM-4/-8

- 4/8 Form C relays
- Each relay rated at 1 Amp at 28 VDC
- Relays can be configured by Zone, Common Alarm, or Common Supervisory
- Relay board is supervised
- Low power requirements

## Remote Trouble Indicator

PRTI-1



- Trouble LED and buzzer
- Mounts in single gang box

## Zone Adder Module

ZA-42

- Provides 4 additional Class B initiating circuits to PFC-5004E
- Provides 2 additional Class A/B NACs
- Directly connects to PFC-5004E chassis and board



## PFC-4410RC

### Water or Agent Extinguishing Panel

Flexible, conventional multi-hazard releasing control panel that is listed for use with pre-action and deluge sprinkler suppression systems and agent based fire suppression systems.

- 4 Class B programmable initiating zones
- 2 dedicated Class B supervisory zones
- 4 programmable Class B outputs
- 24 pre-configured programs
- On-board programming
- Single or double interlock
- Single or dual hazard
- Alarm, trouble, supervisory, and waterflow relay standard
- 40 event history buffer
- 1 abort circuit
- Listings: UL, cUL, FM and CSFM

## Relay Module

ARM-44



- Used with PFC-4410RC
- Provides 8 Form C relay outputs
- Selectable latching or common setting
- Listings: UL, cUL, CSFM, FM and MEA

## Abort Switch



- One N.O. momentary contact
- 5 Amps @ 24 VDC (10 mA minimum)
- Indoor use only
- Listings: UL and FM

## Auxiliary Relay Module

ARM-1 and ARM-2



- 40mA at 24 VDC
- 10 amps resistive
- 120/240 VAC, 0-30 VDC
- 4DPDT contacts - ARM-1
- DPDT contacts - ARM-2
- Listings: UL in conjunction with the PFC-4410RC FM in conjunction with the PFC-4410RC (ARM-2 only)

## Releasing Circuit Disable Switch

RCDS-1



- One N.O. key operated switch
- 4 Amps @120/240 VAC 2.5 Amps @ 125 VAC
- 24 VDC 50 mA
- Indoor use only
- Creates supervisory condition on associated release panel
- Replaces software controlled disconnect
- Temperature range -22°F to 140°F (-30°C to 60°C)
- Complies with NFPA 72 requirements
- Listings: UL and cUL

## Remote Annunciator

RA-4410RC



- Used with PFC-4410RC
- Up to 4 annunciators can be connected to one PFC-4410RC
- Rotary switches on panel and annunciator for supervisory purposes
- Trouble/Supervisory buzzer
- Separate LEDs for various alarms
- Lamp test/buzzer silence switch
- Slide-in zone & output identification labels
- Listings: UL, cUL, CSFM, FM, and MEA

# Conventional Detectors

## Photoelectric Smoke Detector

PS-24



base not included

- Low profile 1.8"
- 2 or 4 wire base
- Sounder & relay base
- 2 built-in power alarm LEDs
- Vandal resistant locking feature
- Test feature
- Non-magnetic test (MRI room)
- Listings: UL, ULC, CSFM, and FM

## Carbon Monoxide CO Detector

CO-12/24



- 12 or 24 VDC power input
- Low current draw
- 85dB at 10' sounder
- Form C alarm and trouble relay
- Self-testing device
- 6 year warranty
- Wall or ceiling mount
- Operating temperature range: 40°F - 100°F (4.4°C - 37.8°C)
- Test and reset button
- Contact rating: 0.1A - 30VDC non-latching
- Listing: UL

## Baseless Photoelectric Detector

BPS Series



- 12 or 24 VDC
- BPS-2, 2 wire baseless photo electric smoke
- BPS-4, 4 wire baseless photo electric smoke
- White or eggshell color
- With heat available
- Listings: UL, ULC, CSFM, and FM

## Heat Detectors

CR-135W/CF-135W/CR-200W/CF-200W



- Available in 135°F and 200°F fixed temperature or rate of rise
- Rate of rise responds to rise in temperature of approximately 15°F per minute
- Single or multiple circuits with open/closed configurations
- Hazardous and moisture-proof options available
- Listings: UL, ULC, CSFM, and FM

## Photoelectric Smoke/ Heat Detector

PS-24H

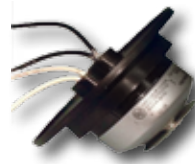


base not included

- 135°F self-restoring fixed temperature
- Low profile 1.8"
- Built-in power alarm LED
- Vandal resistant locking base
- Test feature
- Listings: UL, ULC, CSFM, and FM

## Moisture Proof Heat Detectors

CR-135MP/CF-135MP/CR-200MP/CF-200MP



- Available in 135°F and 200°F fixed temperature or rate of rise
- Rate of rise responds to rise in temperature of approximately 15°F per minute
- Single or multiple circuits with open/closed configurations
- Listings: UL, ULC, AND CSFM

## Smoke Detector Base

SB Series



- 6" polarized base
- Annunciator output
- Current limiting resistor
- Designed for use with the IS-24, PS-24, and PS-24H

## Conventional Duct Detector

SM-501



- Photoelectric DSD-P
- Powered by 115 VAC, 24 VAC or 24 VDC
- (2) 10A Form C alarm contacts
- Wide variety of remote accessories
- WP-1 enclosure provides outdoor protection
- Listings: UL and cUL

## Remote Alarm LED with Push Button Test/Reset Switch

MS-RA/R



- Red alarm LED
- Single gang
- 4.5" H x 2.5" L
- Powered by 15mA at 24 VDC

## Sampling Tubes

STS Series



- STS-2.5 duct sampling tube
- STS-5.0 duct sampling tube
- STS-10 duct sampling tube

## Remote Alarm LED with Key Operated Test/Reset Switch

MS-KA/R



- Red alarm LED
- Key test and reset
- Single gang
- 4.5" H x 2.5" L
- Powered by 15mA at 24 VDC

## Remote Alarm LED

MS-RA



- Red alarm LED
- Single gang
- 4.5" H x 2.5" L
- Powered by 15mA at 24 VDC

## Remote Alarm LED with Key Operated Test/Reset Switch

MS-KA/P/R



- Green pilot LED
- Red alarm LED
- Key test and reset
- Single gang
- 4.5" H x 2.5" L
- Powered by 15mA at 24 VDC



## Fire Pull Stations

P32-1T Series\*

- Single or dual contact
- Terminal connections
- Standard single gang mounting
- 10 Amp snap action switch
- Gold plated SPST contacts
- Optional auxiliary relay contacts
- High gloss red enamel finish
- Glass breakrod
- Surface back boxes available
- Listings: UL, ULC, ADA, CSFM and FM

\*Canadian Model: P32-1TS



## Weatherproof Pull Station

RMS-1T-WP

- Single or dual action
- Optional key reset
- Key operated available
- Dual action available
- Standard single gang mounting
- 10 Amp snap action switch
- Gold plated SPST contacts
- Optional auxiliary relay contacts
- High gloss red enamel finish
- Glass breakrod
- Single or double contact
- Listings: UL, ULC, ADA, CSFM and FM



## Special Applications Pull Stations

The pull stations are available in red, blue, green, yellow, white, black, gray, purple or orange. The wording on the pull stations is customizable with a large variety of standardized units. The standard models have a hex key reset, however a key reset is also available. An institutional model is available that is operated with a key only. The models are available with shallow and deep surface mount back boxes.

- Colors available: Black, blue, green, grey, orange, purple, red, white or yellow
- Single or dual action
- Terminal connectors
- Glass breakrod
- 10 Amp snap action switch
- Mounts on standard single gang box
- Surface back boxes available
- Single or double contact
- Gold plated SPST contacts
- Weatherproof and explosion proof
- Brass or chrome plating
- Custom labeling in any language
- Made in the U.S.A.
- Listings: UL, ULC, ADA, CSFM, FM and MEA



## Bilingual Pull Stations

Potter offers a variety of pull stations in multiple languages.



P32-1TC  
Single Action



P32-1T-LP  
Dual Action



P32-1TS  
Two Stage



# Power Supplies

The Potter PSN Series Power Supplies is designed to provide the power and flexibility needed for the most demanding fire system installations. New and retrofit construction requirements for ADA compliance are easily accomplished with ample power for additional notification appliances.

When additional power is needed, the Potter PSB Series of Bulk Power Supplies provides continuous power to devices which require 24VDC power. It features an efficient switch mode power supply design which is up to 50% more efficient than linear mode supplies. The PSB is used whenever power is needed for a device which requires up to 10 amps continuously (PSB-10).

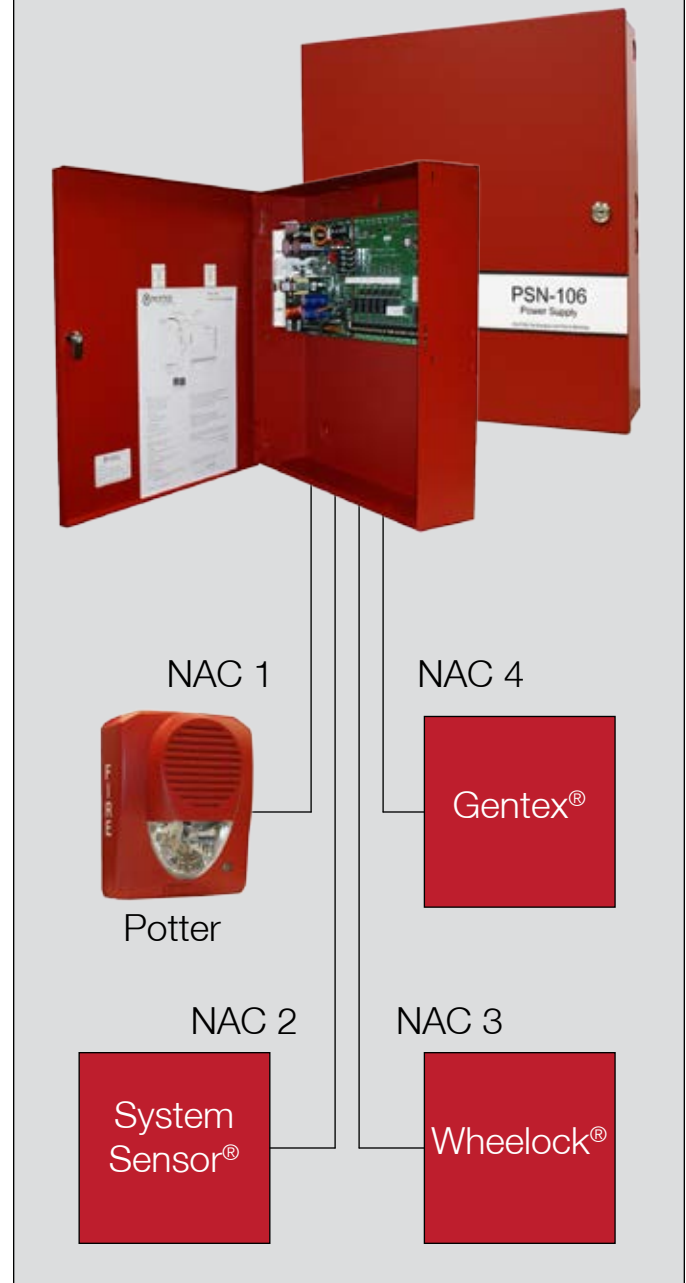
## Power Supplies

### PSB/PSN Series

- Input voltage 120/240 VAC 50/60Hz
- 7-55Ah batteries
- Cabinet will hold up to 18Ah batteries
- UL864 listed battery charger and battery monitor
- PSB output voltage 27.3VDC @10A
- PSN output voltage 24VDC (6A with 4 outputs or 10A with 6 outputs)
- Two trouble relays (5A @ 30VDC)
- Trouble memory feature captures previously stored alerts
- Low AC trouble
- Diagnostic LED's
- Listings: UL, cUL and CSFM
- Patented Quadrasync technology allows flexibility to synchronize four different strobe outputs with any input.

## Quadrasync

Our patented Quadrasync technology allowing four different brands of strobes to be synced together using one panel. There is no need for the panel and devices to utilize the same protocol, making this technology a great feature for retrofit applications.





## Select-A-Horn®

H-1224

- 33 sound output settings
- Horn or chime sound output
- Indoor/outdoor listed (with weatherproof back box)
- Pre-wire back plate
- Universal back plate mounting
- Listings: UL, cUL and CSFM



## Bells

PBA & MBA

- Red powder coating finish
- Sizes available: 6", 8", 10"
- Available voltage: 24 VAC, 120 VAC, 12 VDC, 24 VDC
- Service use: fire alarm, general signal, burglar alarm
- Environment: -40° to 150°F, Indoor or outdoor use (outdoor use requires weatherproof backbox BBK-1)
- Five year warranty
- Listings: UL, ULC (DC only), CSFM, and MEA

# Mini-Horn & Accessories

## Remote Mini-Horn

HPS-24 Series



- Polarized with wide operating voltage range using filtered DC or unfiltered FWR input voltage
- 4 wires for easy field wiring
- Mounts to single gang back box
- Silencer button for 10 minute silence
- Available in red or white
- Optional supervised and non-supervised isolators
- Listing: cUL

## Non-Supervised Isolator

IS-N Series



- Isolates short circuits
- Dwelling use only
- Mounts to standard electrical box
- Available in red or white
- Listing: cUL

## Remote Mini-Horn

MH and HP-25 Series



- Terminal/4-wire models
- Sound output 97dB
- Single gang plate
- 15 mA current draw
- Temporal and non-temporal patterns (HP-25)
- HP-25 12/24 VDC
- MH-12/24 VDC
- MH-120 VAC
- Listings: UL, ULC, and CSFM

## Supervised Isolator

IS-S Series



- Isolates short circuits
- Dwelling use only
- Mounts to standard electrical box
- Available in red or white
- Listing: cUL

## Silence Module

SM-1 Series



- Low current
- Local signal silence device
- Dwelling use only
- AC or DC devices
- LED indication
- Listing: cUL

# Ceiling Mount Chimes & Strobes



## Select-A-Strobe® SL24C

- Selectable 30, 75, or 110 candela
- Low current draw
- Terminal for easy wiring
- Tamper proof Select-A-Switch
- Available 177 candela model
- Designed for wall and ceiling mount
- Sleeping Room Notification Compliant
- Surface mount skirt RBX-1
- Universal adapter plate SPC-1
- Listings: UL, ULC, CSFM, MEA, ADA



## Select-A-Strobe/Horn® SH24C

- Selectable 30, 75, or 110 candela
- 177 candela model also available
- Low current draw
- 24 VDC input
- Terminal for easy wiring
- Tamper proof Select-A-Switch
- Designed for wall and ceiling mount
- Surface mount skirt RBX-1
- Universal adapter plate SPC-1
- Listings: UL, ULC, CSFM, MEA, ADA

# Wall Mount Strobe/Horns



## Select-A-Strobe/Horn® SH-1224

- 12 VDC with 15, 35 or 60 cd setting
- 24 VDC with 15, 35, 60, 75, 95 or 110 cd setting
- 6 candela settings per device
- 33 sound output settings including chime
- 15/75 ADA compliant on 60 cd setting
- Candela selection view window
- Pre-wire back plate
- Universal back plate mounting
- Listings: UL, cUL, ADA and CSFM

## High Intensity Select-A-Strobe/Horn® SH-24H

- 24 VDC
- 6 candela settings: 95, 110, 135, 150, 177, 185
- Candela selection view window
- Low current draw
- Listings: UL, cUL, ADA and CSFM



## Weatherproof Select-A-Strobe/Horn® SH-1224WP

- 12/24 VDC versions
- Low current draw
- Other lens colors available
- 6 candela settings
- Includes a BBX-5 backbox
- Listings: UL, cUL, ADA and CSFM

## Weatherproof High Intensity Select-A-Strobe/Horn® SH-24H-WP

- 24 VDC
- 6 candela settings: 95, 110, 135, 150, 177, 185
- Indoor or outdoor
- Includes a BBX-5 backbox
- Listings: UL, cUL, ADA and CSFM



33 selectable tones  
through dipswitch  
setting for installation  
flexibility



## Select-A-Strobe®

SL-1224

- 12 VDC with 15, 35 or 60 cd setting
- 24 VDC with 15, 35, 60, 75, 95 or 110 cd setting
- 6 candela settings per device
- 15/75 ADA compliant on 60 cd setting
- Candela selection view window
- Pre-wire back plate
- Universal back plate mounting
- Listings: UL, cUL, ADA and CSFM

## Weatherproof Select-A-Strobe®

SL-1224WP

- 12/24 VDC versions
- Other lens colors available
- 6 candela settings
- Includes BBX-5 backbox
- Listings: UL, cUL, ADA and CSFM

## High Intensity Select-A-Strobe®

SL-24H

- 24 VDC
- 6 candela settings: 95, 110, 135, 150, 177, 185
- Candela selection view window
- Low current draw
- Listings: UL, cUL, ADA and CSFM

## Weatherproof High Intensity Select-A-Strobe®

SL-24H-WP

- 24 VDC
- 6 candela settings: 95, 110, 135, 150, 177, 185
- Indoor or outdoor
- Includes a BBX-5 backbox
- Listings: UL, cUL, ADA and CSFM



6 settings using roller including a 35 candela setting for 30' x 30' room spacing and an ADA 15/75 compliant 60 candela setting

# Mass Notification Appliances



## Colored Strobe Wall Mount

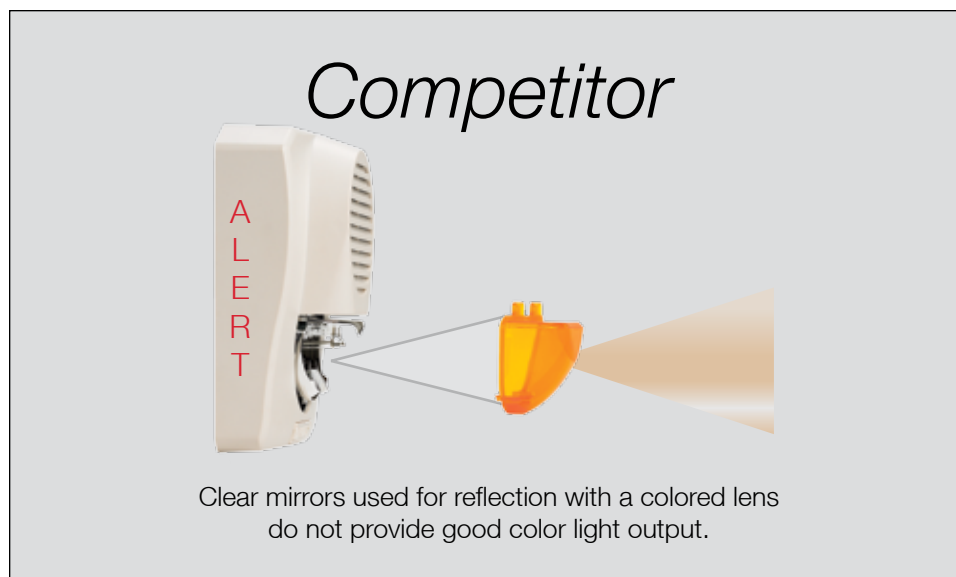
CSL-1224W

- 12/24 VDC
- Low profile, universal mounting plate included
- Available colored light: Amber, Blue, Green, or Red
- Low current draw
- Selectable output settings
- Weatherproof with BBX-5 backbox
- Listings: UL, cUL, and CSFM

## Colored Strobe/Horn Wall Mount

CSH-1224W

- 12/24 VDC
- Available colored light: Amber, Blue, Green, or Red
- Low current draw
- Selectable output settings
- 3000 Hz interrupted or electromechanical
- Temporal or Non-temporal
- High or low dBA output
- Weatherproof with BBX-5 backbox
- Listings: UL, cUL, and CSFM





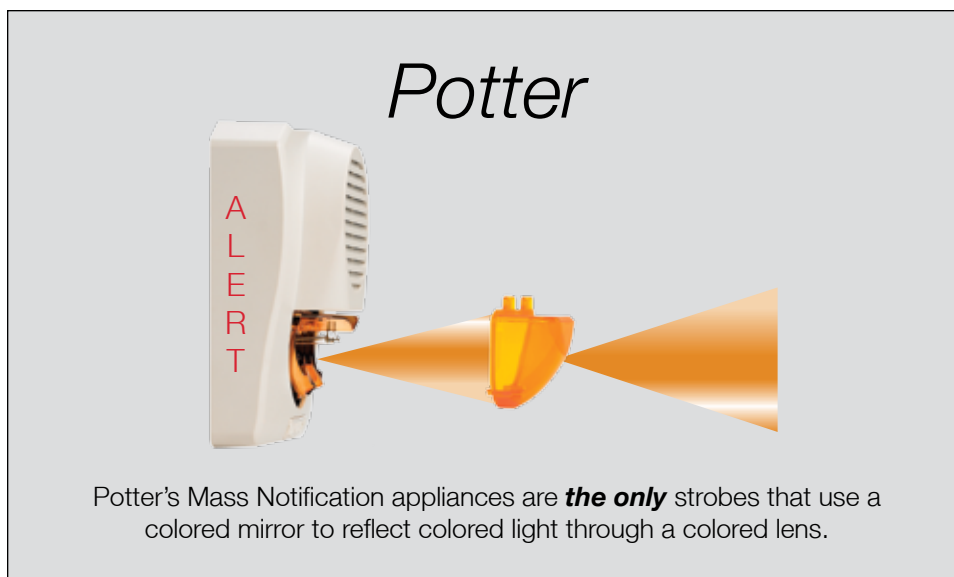


## Colored Select-A-Strobe Ceiling Mount CSL24C

- 24 VDC
- Universal Mounting with optional plate
- Available colored light: Amber, Blue, Green, or Red
- Low current draw
- Selectable output settings
- Listings: UL, ULC, and CSFM

## Colored Select-A-Strobe/Horn Ceiling Mount CSH24C

- 24 VDC
- Universal Mounting with optional plate
- Available colored light: Amber, Blue, Green, or Red
- Low current draw
- Selectable output settings
- Horn field selectable tones: 3000 Hz interrupted or electromechanical, temporal or non-temporal, high or low dBA output
- Listings: UL, ULC, and CSFM



# Notification Accessories

## Sync Module

SMD10-3A



- Operates on 24 VDC 9mA
- 3 Amp max. output
- Mounts to a 4" square box
- Ability to Daisy Chain multiple devices
- Listings: UL, ULC, and CSFM

## Back Box

BBK-1 and BBX-1

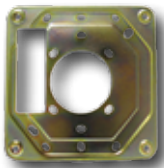


To be used with:

- MBA/PBA bells
- SH-1224WP
- SL-1224WP
- CSH-1224
- CSL-1224

## Mounting Plate

SPC-1



Adapter for:

- SH24C
- SL24C
- CSH24C
- CSL24C

## Back Box

BBX-5



To be used with:

- SL Series strobe/horns
- SH Series strobe/horns

## Double Mounting Plate



- Any device using a 4" mounting configuration

## Trim Skirt

RBX-1



To be used for surface mounting with

- SH24C
- SL24C
- CSH24C
- CSL24C

## Explosion Proof Strobe

FSEX-24 PMR



- 24 VDC
- Corrosion Resistant housing
- Indoor outdoor mounting
- Polarized
- Listings: UL, CSFM, and MEA

## Explosion Proof Horn

FHEX-24 SMR



- 24 VDC
- Corrosion Resistant housing
- Indoor outdoor mounting
- Polarized
- 100dB at 10 ft. (110dB at 1m)
- Listings: UL, CSFM, and MEA

## Explosion Proof Horn/Strobe

YL6



- 24 VDC
- Low current draw
- Aluminum enclosure
- Flash rate of one per second
- 110 dB at one meter sounder
- Listings: UL and cUL

## Explosion Proof/Weather Proof Heat Detectors

CR-135EWT/CF-135EWT/CR-200EWT  
/CF-200EWT



- Available in 135°F and 200°F fixed temperature or rate of rise
- Rate of rise responds to rise in temperature of approximately 15°F per minute
- Class I, Groups C and D
- Class II, Groups E, F and G
- Class III
- Applications requiring special purpose enclosure types III, IV and V, weather proof, water-tight and dust-tight
- Listings: UL and ULC

## Explosion Proof Pull Station

RMS-6T-EXP-WP



- Marine & NEMA 4X Rated
- ADA compliant
- Key lock reset
- DPDT Switch
- Screw terminal connections
- Listings: UL, ULC, FM, CSFM, and NYMEA

# Fire Products List

## Analog Addressable Fire Alarm Panels

Stock #	Model #	Description
3992600	PFC-8500	127-508 Point Addressable Panel

## Analog Addressable Fire Alarm Panel Accessories

Stock #	Model #	Description
3006458	RA-6075	32 Char LCD Annunciator
3006462	RA-6075R	LCD Remote Releasing Annunciator
3006459	CA-6075	Class A Expander
3006465	UD-1000	DACT for PFC-6030/6075
3992610	ALE-127	Loop Expander for PFC-8500
3992625	LCD-AN	80 Character LCD Annunciator for PFC-8000
3992630	LED-AN	LED Annunciator for PFC-8000

## Analog Addressable Detectors & Bases

Stock #	Model #	Description
1430800	PSA	Photo Smoke Detector
1430801	PSHA	Photo Smoke/Heat Detector
1430803	FHA	Fixed Temp Heat Detector
1430804	RHA	Rate of Rise Heat Detector
1430806	AB-6	6 Inch Addressable Base
1430807	AIB	Isolator Base
1430809	ASB	Addressable Sounder Base
1430808	ARB	Addressable Relay Base

## Analog Addressable Modules

Stock #	Model #	Description
1430800	MCM	Miniature Contact Module
1430801	SCM-4	Single Contact Module
1430803	DCM-4	Dual Contact Module
1430804	CIZM-4	Conventional Initiating Zone Module
1430806	TRM-4	Twin Relay Module
1430807	MOM-4	Monitored Output Module
1430809	SCI	Short Circuit Isolator

## DACT & Accessories

Stock #	Model #	Description
3003007	RA-7630	LCD Annunciator
3003002	RA-7692	LED Annunciator
1000312	TAM	Trouble Annunciator Module
1000315	SNM	Supervised Notification Module
1000395	RJ31X	Phone Jack
1000396	RJ31X	4' Phone Cord - Plug
1000397	RJ31X	Phone Jack and 4' Cord Kit

## Conventional Fire Alarm Panels

Stock #	Model #	Description
3992015	PFC-5004	4 Zone Fixed Microprocessor Based, Red Cabinet
3992190	PFC-5004D	4 Zone Microprocessor Based DACT, Red Cabinet
3992020	PFC-5004E	4 Zone Expandable to 8 Microprocessor Based, Red Cabinet
3992175	PFC-5008	8 Zone 5004E Kit w/Built-in 2-Line Digital Communicator, Red Cabinet (Requires CFG-LCD to Program Communicator)

3992275	PFC-5008 w/o DACT 8 Zone 5004E Kit, Red Cabinet	Phone Jack
3992021	PC Assembly	PC Board Assembly for PFC-5004E & PFC-5008

## Conventional Fire Alarm Panel Accessories

Stock #	Model #	Description
3002275	RA8F	8 Zone LED Annunciator, White
3002135	RA8F	8 Zone LED Annunciator, Red
3002115	ZA-42	4 Zone/2 Signal Adder Card Series 5000
3002120	ARM-4	4 Adder Relay Card Series 5000
3002125	ARM-8	8 Adder Relay Card Series 5000
3002100	PR-5000	Polarity Reversal and City Tie Module
3002140	PRTI-1	Remote Trouble Unit
3992500	UDACT-9100	2-Line Telephone Dialer, Point ID w/ Remote Up/Download
3992505	CFG-LCD	Programmer for UDACT

## PFC Series Releasing Control Panels

Stock #	Model #	Description
3006142	PFC-4410RC	Panel with Red Cabinet
3006144	PFC-4410RC	Panel with White Cabinet

## Releasing Control Accessories

Stock #	Model #	Description
3001000	Abort Switch	Abort Switch
3001002	RCDS-1, ARM-1, ARM-2	Releasing Circuit Disable Switch
3006221	ARM-44	8 Form C Relay Board f/ PFC-4410RC UL/ULC
3006013	CA2Z, RA-4410RC	Class A Initiating Device
3005300	CAM	Class A Notification Circuit Module
5130092	BT-40	Battery (12V) 5.0 AH (order 2)
5130084	BT-80	Battery (12V) 8.0 AH (order 2)
5130090	BT-120	Battery (12V) 12.0 AH (order 2)
5130086	BT-180	Battery (12V) 18.0 AH (order 2)
5090157	PFC-TW	Flush Trim Bezel, White
5090155	PFC-TR	Flush Trim Bezel, Red
5080593	EOLR	End of Line Resistor f/ PFC-4410RC
3005012	EOLD	End of Line Diode Assembly f/ PFC-4410RC Release Circuit
5250075	PFC-Key	Key for all Potter Panels (WS-93)
5250065	LOCK	Lock for PFC-4410RC

## Conventional Detectors & Bases

Stock #	Model #	Description
1430061	CO-12/24	Carbon Monoxide Detector 12 or 24 Volt w/ Relays and
1430010	IS-24	Ion. Detector, 2-Wire, 24V
1430011	PS-24	Photoelectric Detector, 2 wire, 24V
1430012	PS-24H	Photoelectric Detector, 2-Wire, 24V w/ Thermal Sounder
1430006	BPS-2	2-Wire Baseless Photo Smoke Detector Eggshell
1430026	BPS-2W	2-Wire Baseless Photo Smoke Detector White
1430007	BPS-4	4-Wire Baseless Photo Smoke Detector Eggshell

# Fire Products List

1430029	BPS-4W	4-Wire Baseless Photo Smoke Detector White
1000140	CR-135	Combination Rate of Rise/Fixed Temp. 135°
1000141	CR-200	Combination Rate of Rise/Fixed Temp. 200°
1000142	CF-135	Fixed Temperature 135°
1000143	CF-200	Fixed Temperature 200°
1000137	CR-135-MP	Combination RoR/Fixed Temp. 135° Weather Proof
1000139	CR-200-MP	Combination RoR/Fixed Temp. 200° Weather Proof
1000136	CF-135-MP	Fixed Temp 135° Weather Proof
1000138	CF-200-MP	Fixed Temp 200° Weather Proof
1430016	SB-93	Smoke Base - 93mA Draw 6" Base 24V
1430014	SB-46	Smoke Base - 46mA Draw 6" Base 24V
1430015	SB-81R	Smoke Base/Relay - 81mA Draw 6" Base 24V
1430013	HSC-4R	4 Wire Smoke Base/Relay-43mA Draw 6" Base 24V
1430027	SPC-24N	Beam Smoke Detector

## Duct Detectors & Accessories

Stock #	Model #	Description
1430009	DSD-P	Photoelectric Duct Detector
1430001	ADSD-P	Analog Photo Duct Detector
1430020	ADSD-PR	Analog Photo Duct Detector w/Relay
1000266	STS-2.5	2.5 ft. Duct Sampling Tube
1000468	STS-5	5 ft. Sampling Tube (2.5'-5' Duct Width)
1000263	STS-10	10 ft. Sampling Tube (5'-10' Duct Width)
1000256	MS-RA	Remote Alarm LED Red
1000255	MS-RA/R	Remote Alarm Test/Reset
1000254	MS-KA/R	Remote Alarm and Key Test/Reset
1000253	MS-KA/P/R	Remote Alarm, Pilot, Test/Reset
1000252	MS-RH/KA/P/R	Remote Alarm Horn, Alarm LED(Red), Pilot LED(Green), Key-Operated Test/Reset Switch
1000251	MS-RH/KA/P/A/T	Alarm Horn, Alarm LED, Trouble, Pilot, Key Reset

## Fire Pull Stations

Stock #	Model #	Description
1000447	P32-1T	SPST, Single Action, Terminal, Hex-Key Reset-Red
1000476	P32-1T-LP	SPST, Dual Action, Terminal, Hex-Key Reset-Red
1000451	P32-1T-KL	Single Action, SPSY, Hex-Key Reset, Red
1000448	P32-1T-LP-KL	Dual Action, DPDT, Key Reset, Red
1000450	RMS-1T-KO	Single Action, SPST, Key Operated (Institutional), Red
1000477	RMS-2T	Single Action, DPST, Hex-Key Reset, Red
1000478	RMS-6T	Single Action, DPDT, Hex-Key Reset, Red
1000401	RMS-1T-WP	Single Action, Weather Proof, SPST, Hex-Key Reset, Red
1000403	RMS-1T-WP-LP	Dual Action, Weather Proof, SPST, Hex-Key Reset, Red

## Special Application Pull Stations\*

Stock #	Model #	Description
1000617	RMS-1T Red AGENT RELEASE	Red Single Action, SPST, Hex-Key Reset, Red "Agent Release" Wording
1000600	RMS-1T Blue DOOR RELEASE	Blue Single Action, SPST, Hex-Key Reset, Blue "Door Release" Wording
1000616	RMS-1T Blue EMO	Blue Single Action, SPST, Hex-Key Reset, Blue, "EMO" Wording

1000611	RMS-1T Yellow	Yellow Single Action, SPST, Hex-Key Reset, "Fire Suppression System" Wording
1000623	RMS-1T-LP-WP DELUGE SPK RELEASE	Yellow Dual Action, SPST, Hex-Key Reset, "Deluge SPK Release" Wording
1000624	RMS-1T-LP-WP FOAM RELEASE	Yellow Dual Action, SPST, Hex-Key Reset, Weatherproof, "Foam Release" Wording
1000420	P32-1TC	Single Action, Bilingual
1000421	P32-1T-LP	Dual Action, Bilingual
1000422	P32-1TS	Two Stage, Bilingual

\*Call for additional models

## Power Supplies

Stock #	Model #	Description
3006435	PSB-10	10 Amp Bulk Power Supply
3006436	PSN-64	6 Amp NAC Power Supply
3006437	PSN-106	10 Amp NAC Power Supply

## Bells

Stock #	Model #	Description
1806120	PBA-1206	6" 120 VAC bell (UL only)
1808120	PBA-1208	8" 120 VAC bell (UL only)
1810120	PBA-12010	10" 120 VAC bell (UL only)
1806024	PBA-246	6" 24 VAC bell (UL only)
1808024	PBA-248	8" 24 VAC bell (UL only)
1810024	PBA-2410	10" 24 VAC bell
1750100	MBA-246	6" 24 VDC bell
1750110	MBA-248	8" 24 VDC bell
1750090	MBA-2410	10" 24 VDC bell
1750070	MBA-126	6" 12 VDC bell
1750080	MBA-128	8" 12 VDC bell
1750060	MBA-1210	10" 12 VDC bell
1500001	BBK-1	Back Box Weather Proof Bell
4270024	BBX-1	Back Box Deep Weather Proof

## Horns

Stock #	Model #	Description
4560041	MH-12/24R	Mini-horn 12/24 VDC Lead Wires Red
4560042	MH-12/24W	Mini-Horn 12/24 VDC Lead Wires White
4560043	MH-12/24TR	Mini-Horn 12/24 VDC Terminals Red
4560044	MH-12/24TW	Mini-Horn 12/24 VDC Terminals White
4550014	HP-25TR	Mini-Horn 24 VDC Selectable Tone Red
4550015	HP-25TW	Mini-Horn 24 VDC Selectable Tone White
1610224	MH-120R	Mini-horn 120 VAC Leads Red
1610225	MH-120W	Mini-horn 120 VAC Leads White
4560050	H-1224R	Indoor/Outdoor 12/24 VDC Horn Red
4560051	H-1224W	Indoor/Outdoor 12/24 VDC Horn White

## Canada Mini-Horns & Accessories

Stock #	Model #	Description
4560031	HPS-24R	Mini-Horn 24 VDC with Silencer Button Red
4560032	HPS-24W	Mini-Horn 24 VDC with Silencer Button White
4560035	SM-1R	Mini-Horn Silence Module Red

# Fire Products List

4560040	SM-1W	Mini-Horn Silence Module White
4560034	IS-NR	Non-Supervised Isolator Red
4560039	IS-NW	Non-Supervised Isolator White
4560033	IS-SR	Supervised Isolator Red
4560038	IS-SW	Supervised Isolator White

## Select-A-Strobe® Wall Mount

Stock #	Model #	Description
4560060	SL-1224R	Strobe Indoor 12/24 VDC 6 Settings Red
4560061	SL-1224W	Strobe Indoor 12/24 VDC 6 Settings White
4700050	SL-1224 WP-R	Strobe Weatherproof 12/24 VDC with BBX-5 Backbox Red
4700051	SL-1224 WP-W	Strobe Weatherproof 12/24 VDC with BBX-5 Backbox White
4560062	SL-24H-R	Strobe High Output 24 VDC Red
4560063	SL-24H-W	Strobe High Output 24 VDC White
4700052	SL-24H-WP-R	Strobe Indoor/Outdoor High Output 24 VDC Red
4700053	SL-24H-WP-W	Strobe Indoor/Outdoor High Output 24 VDC White

## Select-A-Strobe/Horn® Wall Mount

Stock #	Model #	Description
4560070	SH-1224R	Strobe/Horn 12/24 VDC 6 Settings Indoor Red
4560071	SH-1224W	Strobe/Horn 12/24 VDC 6 Settings Indoor White
4710010	SH-1224 WP-R	Strobe/Horn 12/24 VDC Weatherproof with BBX-5 Backbox Red
4710011	SH-1224 WP-W	Strobe/Horn 12/24 VDC Weatherproof with BBX-5 Backbox White
4560072	SH-24H-R	Strobe/Horn High Output 24 VDC Red
4560073	SH-24H-W	Strobe/Horn High Output White
4710012	SH-24H-WP-R	Strobe/Horn High Output Red
4710013	SH-24H-WP-W	Strobe/Horn High Output White

## Select-A-Strobe® Ceiling Mount

Stock #	Model #	Description
4570007	SL24C-075110R	Strobe Ceiling Mount 30/75/110cd Red
4570008	SL24C-3075110W	Strobe Ceiling Mount 30/75/110cd White
4570005	SL24C-177R	Strobe Ceiling Mount 177cd Red
4570006	SL24C-177W	Strobe Ceiling Mount 177cd White

## Select-A-Strobe/Horn® Ceiling Mount

Stock #	Model #	Description
4570003	SH24C-075110R	Strobe/Horn Ceiling 30/75/110cd Red
4570004	SH24C-3075110W	Strobe/Horn Ceiling 30/75/110cd White
4570001	SH24C-177R	Strobe/Horn Ceiling 177cd Red
4570002	SH24C-177W	Strobe/Horn Ceiling 177cd White

## Select-A-Chime & Select-A-Strobe/Chime

Stock #	Model #	Description
4580001	CM24CR	Chime Ceiling or Wall Mount 24VDC Red
4580002	CM24CW	Chime Ceiling or Wall Mount 24 VDC White
4580007	SCM24C-3075110R	Strobe/Chime Ceiling or Wall Mount 30/75/110 cd Red
4580008	SCM24C-3075110W	Strobe/Chime Ceiling or Wall Mount 30/75/110 cd White

## Mass Notification Strobes Wall Mount

Stock #	Model #	Description
4810051	CSL-1224AR	Colored Strobe Indoor/Outdoor Amber Lens Red Body
4810052	CSL-1224AW	Colored Strobe Indoor/Outdoor Amber Lens White Body
4810053	CSL-1224BR	Colored Strobe Indoor/Outdoor Blue Lens Red Body
4810054	CSL-1224BW	Colored Strobe Indoor/Outdoor Blue Lens White Body
4810055	CSL-1224GR	Colored Strobe Indoor/Outdoor Green Lens Red Body
4810056	CSL-1224GW	Colored Strobe Indoor/Outdoor Green Lens White Body
4810057	CSL-1224RR	Colored Strobe Indoor/Outdoor Red Lens Red Body
4810058	CSL-1224RW	Colored Strobe Indoor/Outdoor Red Lens White Body

## Mass Notification Strobes/Horns Wall Mount

Stock #	Model #	Description
4800051	CSH-1224AR	Colored Strobe/Horn Indoor/Outdoor Amber Lens Red Body
4800052	CSH-1224AW	Colored Strobe/Horn Indoor/Outdoor Amber Lens White Body
4800053	CSH-1224BR	Colored Strobe/Horn Indoor/Outdoor Blue Lens Red Body
4800054	CSH-1224BW	Colored Strobe/Horn Indoor/Outdoor Blue Lens White Body
4800055	CSH-1224GR	Colored Strobe/Horn Indoor/Outdoor Green Lens Red Body
4800056	CSH-1224GW	Colored Strobe/Horn Indoor/Outdoor Green Lens White Body
4800057	CSH-1224RR	Colored Strobe/Horn Indoor/Outdoor Red Lens Red Body
4800058	CSH-1224RW	Colored Strobe/Horn Indoor/Outdoor Red Lens White Body

## Mass Notification Strobes Ceiling Mount

Stock #	Model #	Description
4810009	CSL24C-AR	Colored Strobe Ceiling Mount Amber Lens Red Body
4810010	CSL24C-AW	Colored Strobe Ceiling Mount Amber Lens White Body
4810011	CSL24C-BR	Colored Strobe Ceiling Mount Blue Lens Red Body
4810012	CSL24C-BW	Colored Strobe Ceiling Mount Blue Lens White Body
4810013	CSL24C-GR	Colored Strobe Ceiling Mount Green Lens Red Body
4810014	CSL24C-GW	Colored Strobe Ceiling Mount Green Lens White Body
4810015	CSL24C-RR	Colored Strobe Ceiling Mount Red Lens Red Body
4810016	CSL24C-RW	Colored Strobe Ceiling Mount Red Lens White Body

## Mass Notification Strobes/Horns Ceiling Mount

Stock #	Model #	Description
4810001	CSH24C-AR	Colored Strobe/Horn Ceiling Mount Amber Lens Red Body
4810002	CSH24C-AW	Colored Strobe Horn Ceiling Mount Amber Lens White Body
4810003	CSH24C-BR	Colored Strobe/Horn Ceiling Mount Blue Lens Red Body
4810004	CSH24C-BW	Colored Strobe/Horn Ceiling Mount Blue Lens White Body
4810005	CSH24C-GR	Colored Strobe/Horn Ceiling Mount Green Lens Red Body
4810006	CSH24C-GW	Colored Strobe/Horn Ceiling Mount Green Lens White Body
4810007	CSH24C-RR	Colored Strobe/Horn Ceiling Mount Red Lens Red Body
4810008	CSH24C-RW	Colored Strobe/Horn Ceiling Mount Red Lens White Body



## Notification Accessories

Stock #	Model #	Description
4950008	SMD10-3A	Sync Module
4270038	SPC-1	Mounting Plate
4270032	RBX-1R	Trim Skirt Red
4270033	RBX-1W	Trim Skirt White
1500001	BBK-1	Weatherproof Bell Backbox
4270024	BBX-1	Weatherproof Backbox Deep
4270048	BBX-5R	Weatherproof Backbox Red
4270049	BBX-5W	Weatherproof Backbox White
4270018	4BX-3R	Surface Mount Backbox Red
4270019	4BX-3W	Surface Mount Backbox White
4270045	4BX-5-R	SR/SSR Speaker Backbox Red
4270046	4BX-5-W	SR/SSR Speaker Backbox White

## Explosion Proof Devices

Stock #	Model #	Description
1430500	FHEX-24SMR	Explosion Proof Horn 24 VDC
1430501	FSEX-24PMR	Explosion Proof Strobe 24 VDC
1430510	YL6	Explosion Proof Horn/Strobe 24 VDC
1000148	CR-135EWT	Explosion Proof Combination RoR/Fixed Temp. 135°
1000149	CR-200EWT	Explosion Proof Combination RoR/Fixed Temp. 200°
1000134	CF-135EWT	Explosion Proof Fixed Temp 135°
1000135	CF-200EWT	Explosion Proof Fixed Temp 200°
1000405	RMS-6T-EXP-WP-LP	Explosion Proof Dual Action Red
1000400	RMS-6T-EXP-WP	Explosion Proof Fire Pull Station Red
1000618	RMS-6T-EXP Blue	Explosion Proof DPDT "MAN DOWN" Pull Station
1000637	RMS-6T-EXP Yellow	Explosion Proof DPDT "EMERGENCY" Pull Station

## Batteries & Relays

Stock #	Model #	Description
5130092	BT-40	12 Volt 5.0 AH Battery
5130084	BT-80	12 Volt 8 AH Battery
5130090	BT-120	12 Volt 12 AH Battery
5130086	BT-180	12 Volt 18 AH Battery
5130097	BT-260	12 Volt 26 AH Battery
1000015	SSU-00500	Battery Cabinet
3004726	ARM-1	4PDT Relay With Socket (5A); 1st Alarm Functions
3004725	ARM-2	DPDT Relays (3); 1st Alarm, 2nd Alarm, Discharge Functions
1000260	MR-101/T	24VDC/115VAC/230VAC 10 amp SPDT with Track & Hardware
1000259	MR-101/C	24VDC/115VAC/230VAC 10 amp SPDT with Grey Enclosure
1000269	MR-201/T	24VDC/115VAC/230VAC 10 amp SPDT with Track & Hardware
1000258	MR-201/C/G	24VDC/115VAC/230VAC 10 amp DPDT with Grey Enclosure
1000273	MR-201/C/R	24VDC/115VAC/230VAC 10 amp DPDT with Red Enclosure
1000257	MR-801/T	24VDC/24VAC/115VAC 10 amp with Track and Hardware
1000262	PAM-1	24VDC/24VAC/115VAC 10 amp Encapsulated
1000268	PAM-4	9-40VDC 10 amp Form C Relay Encapsulated



# Motion Detectors



## External Motion Detector

### PIR-TECT 1

- Highly cost-effective twin PIR external motion detector which can be used to control cameras and other alarm warning devices
- Aesthetically pleasing modern design incorporating advanced technological features with radically powerful capabilities
- High immunity to triggers from the sun, reflections and shadows to minimize the potential for nuisance alarms, enabling response centers to deal with genuine threats
- Available in programmable beam ranges of 35ft, 65ft, and 100ft
- Adjustable pan (180 degree) and tilt (90 degree) electronics module
- Able to be mounted up to the height of 20ft – 10 ft Optimum allowing the view of the sensor and the camera to be matched.
- 10 degree – 70 degree coverage angle, 100ft X 100ft max
- 2 volt-free contact outputs – 1 normally open & 1 normally closed
- Front and rear tampers
- Conduit cable adaptor is available for surface mount connections
- Walk test option available



Walk Tester

## External Dual Technology Motion Detector

### PIR-TECT 2

- PIR/Microwave external motion detector which can be used for intruder monitoring CCTV surveillance and other alarm warning devices.
- Aesthetically pleasing modern design incorporating advanced technological features with radically powerful capabilities
- High immunity to triggers from the sun, reflections and shadows to minimize the potential for nuisance alarms, enabling response centers to deal with genuine threats
- Available in programmable beam ranges of 35ft, 65ft, and 100ft
- Adjustable pan (180 degree) and tilt (90 degree) electronics module
- Able to be mounted up to the height of 20ft – 10 ft Optimum allowing the view of the sensor and the camera to be matched.
- 10 degree – 70 degree coverage angle, 100ft X 100ft max
- 2 volt-free contact outputs – 1 normally open & 1 normally closed
- Front and rear tampers
- Conduit cable adaptor is available for surface mount connections
- Walk test option available

## Reed Plunger

PSW-1



- 25" Leads AWG #22
- 3 mm pre-travel stroke
- 7 mm overall operating stroke
- Colors: Ivory

## 3/8" Press Fit Plunger Switch

PSW-21



- 25" Leads AWG #22
- 3 mm pre-travel stroke
- 7 mm overall operating stroke
- Operating force 100 ~ 200g
- Colors: Brown, Gray, or Ivory

## Reed Plunger

PSW-2



- 25" Leads AWG #22
- 3 mm pre-travel stroke
- 7 mm overall operating stroke
- (2) Reed switches in one housing
- Colors: Brown, Gray, or Ivory

## Adapter Housing

PSW-1H



- Specially designed for the PSW-1 Plunger
- Colors: Ivory

## 3/8" Press Fit Plunger with Flange

PSW-22



- 25" Leads AWG #22
- 3 mm pre-travel stroke
- 7 mm overall operating stroke
- Color: Ivory

\*PSW-22 Available with  
N/C or N/O loop

## Mechanical Tamper Switch

TSW-2T



- 0.2" Pre-travel stroke
- 0.5" Overall operating stroke
- (2) Self-cleaning split blade contacts
- Color: Ivory
- Dimensions: 1"W x 0.69"H x 2.09"D

# Emergency Switches

## Emergency Push Button Switch

AES-1



- Colors: Brown or Ivory

## Push Button Switch

ABS-1

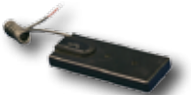


- Blank button
- Color: Ivory

# Specialty Switches

## Money Clip (N/O, N/C Loop)

AMC-2



- Fits standard cash register drawers
- Retractable cord
- Microswitch mechanism
- Color: Black
- Dimensions: 5.5"W x 2.16"H x 0.59"D

## 2-Conductor 21" Quick Disconnect Cord

QDC-2



- Heavy duty cables with non-ferrous metal blades
- Stainless steel sash chains
- PVC jacketed cord with epoxy potted for low resistance

## Armored Cable Fence Detector System (N/O, N/C Loop)

AFS-101B



- Dual action alarm sensor
- SPDT Form C for open or closed loop
- Vibration resistant
- Armored cable
- Swivel mounting bracket
- Low cost solution

# Sensors

## Glass Shock Piezo Electric Sensor

GSC-20N



- 1 second latch time on alarm
- Moisture proof
- 10' radius coverage
- Normally closed loop circuit
- Non-polarity
- 3M adhesive tape
- 3 ft. 2-conductor AWG #22
- Leads max. loop current: 40 mA
- Color: White

## Float Switch

OFL-331C with L-Bracket



- Fluid level sensor
- Waterproof and shock-proof
- Hermetically sealed
- Form C switch

## Electronic Vibration Detector System

EVD-1



- EVD-1: stand alone unit
- UL listed for ATM machines, safes and night deposits
- Allows UL complete certification
- Built-in accumulator & test circuit
- Exceptional sensitivity without false alarms
- Independent tamper output
- Multi-color status LED display
- Reliable, sensitive piezo sensor technology
- Listings: UL and ULC

## Electronic Vibration Detector System

EVD-2



Consists of:

- EVD-M (Master Control Unit)
- EVD-R (Remote Detector)
- EVD-M: expandable, 15 additional remote detectors with one control panel
- Allows UL complete certification for safe and vault
- Built-in accumulator & test circuit
- Exceptional sensitivity without false alarms
- Independent tamper output
- Multi-color status LED display
- On-board high security safe contact interface on EVD-R
- Listings: UL and ULC

## Safe/Vault Pak

EVD-2C



Consists of:

- EVD-2
- One (1) HSC-1 high security safe contact

## Vault Sound Alarm System

VSA-2 Series



Consists of:

- Main Controller
- Microphone
- Remote Test Annunciator (RTA)
- Push button balancing
- Manual sensitivity adjustment
- On-board accumulator
- Built-in test button and sounder
- Integrated controller and microphone
- Allows UL complete certification
- Listing: UL

## Safe Pak

EVD-1C



Consists of:

- EVD-1 stand alone unit
- One (1) HSC-1 high security safe contact

# Hold Up Switches

## Hold-up Switch

HUB-M



- Versatile and easy to install
- One DPDT contact
- 3 Amps at 28V DC/AC .05 Amp at 125 VDC resistive
- All-In-One Switch, momentary or latching
- Screw Terminals
- Listings: UL and ULC

## Key Resetable Hold-up Switch

HUSK-20



- Stainless steel housing
- Status window alarm indicator red/blue
- Terminal strip for easy wiring
- 125 VAC 5 Amps, 30 VDC 5 Amps
- Dimensions: 2.13"W x 1.19"H x 3.66"L
- Operating temperature range: -4°F to 176°F
- Single pole double throw

## Hold-up Switch

HUB-T



- Two Sets DPDT Contacts
- ABS Plastic Enclosure
- 3 Amps at 28V DC/AC .05 Amp at 125 VDC resistive
- All-In-One switch, momentary or latching
- Screw Terminals
- Listings: UL and ULC

## Momentary Type, Double Button Hold-up Switch

HUSD-15BM



- Two push buttons for activation
- Hidden reset button and mounting screws
- Terminal strip for easy wiring
- 125 VAC 5 Amps, 30 VDC 5 Amps
- Dimensions: 2.2"W x 2.2"L x 1.1"H
- Color: White
- Single pole double throw

## Tool Resetable Hold-up Switch

HUS-7A



- ABS housing
- Large round push button
- Status window alarm indicator red/blue
- Terminal strip for easy wiring
- 125 VAC 5 Amps, 30 VDC 5 Amps
- Dimensions: 2"W x 1.06"H x 3"L
- Single pole double throw

## Latching Type, Double Button Hold-up Switch

HUSD-15BL



- Two push buttons for activation
- Hidden mounting screws
- Terminal strip for easy wiring
- 125 VAC 5 Amps, 30 VDC 5 Amps
- Dimensions: 2.2"W x 2.2"L x 1.1"H
- Color: White
- Single pole double throw

## Durable Siren

SSX-52



- Self-contained indoor/outdoor siren
- Sturdy aluminum back plate
- Dual tamper protection
- 120dB sound output
- Warble sound output
- Mounts directly to wall or 4"square back box

## 25 Watt Durable Siren

SSX-82



- Self-contained indoor/outdoor siren
- Sturdy aluminum back plate
- Dual tamper protection
- Steady/Warble sound
- 25 Watt
- 127dB sound output

## Durable Siren/Strobe

SSX-52S



- Self-contained indoor/outdoor siren/strobe
- Sturdy aluminum back plate
- Dual tamper protection
- 120dB sound output
- Warble sound output
- Mounts directly to wall or 4"square back box
- Strobe consists of colored mirror and lens
- Strobe Colors: Amber, blue, clear, red

## 25 Watt Durable Siren/Strobe

SSX-82S



- Self-contained indoor/outdoor siren/strobe
- Sturdy aluminum back plate
- Dual tamper protection
- Steady/Warble sound
- 25 Watt
- 127dB sound output
- Strobe consists of colored mirror and lens
- Strobe Colors: Amber, blue, clear, red

## Indoor/Outdoor Electronic Siren

FSS-26T



- 125 dB sound output at 12 VDC 1.2 Amps
- Bidirectional mounting bracket
- 6-tone dip switch selectable:  
Slow-whoop, European Siren, Yelp,  
Raygun Warble, Pulsing Buzzer, and  
Raygun Yowl



## 15 Watt Indoor/Outdoor Speaker SHX-52

- 15 watt speaker
- Indoor/outdoor polycarbonate housing
- Dual tamper protection
- Frequency response range: 500-5000 Hz



## 15 Watt Indoor/Outdoor Speaker/Strobe SHX-52S

- 15 watt speaker
- Indoor/outdoor polycarbonate housing
- Dual tamper protection
- Frequency response range: 500-5000 Hz
- Strobe Colors: Amber, Blue, Clear, or Red



## Voice Siren Driver VSD-208

- Fire/burglar message in English, Spanish or both
- Temporal fire code
- Furious barking dogs
- 32 different selectable modes
- 8 distinctive sound options
- Field selectable Hi/Lo input levels
- Use with 4, 8, and 16 Ohm speakers
- Operates on 9 ~ 18 VDC



## Recordable Siren Driver VSD-308

- On-board mini USB connection and software included
- .wav files easily uploaded from computer
- Fire/burglar message in English, Spanish or both
- 8 distinctive sound outputs
- 32 different selectable combinations
- User recordable voice message
- Selectable temporal pattern
- Operates on 9 ~ 18 VDC
- Use with 4, 8 and 16 Ohm speakers
- Compatible with Amseco® models SHX-51, SH-4, FHS-2 and FHS-3





## 60,000 Candle Power Output Strobe SL-401

- 115 mA current draw
- Xenon tube technology
- Two wire connection
- Reverse polarity protection
- Operates on 12 VDC
- Optional Mounting Plate: 4SP-MW



## 160,000 Candle Power Strobe SL-5A Series

- Xenon tube technology
- Four wire connection
- Reverse polarity protection
- Optional Mounting Plate: 4SP-MW
- 12V/24V DC selectable
- Colors: Amber, Blue, Clear, and Red

# General Signaling Bells

## General Signaling Bell

MBA-10G12PV2



- Aluminum gong
- Motor-driven bell
- Draws 68 mA at 12 VDC
- Polarized
- Gray finished gong

## Hinged 12 VDC 10" Motor Bell and Box

ABB-1014



- Hinged cover
- Dual UL tamper switches
- 10" UL motor driven bell
- Weather resistant powder coat paint
- Maximum 100 mA at 12 VDC
- Dimensions: 10.83"W x 10.83"H x 3.74"D

## 12 VDC 10" Motor Bell and Box

ABB-1033



- Dual pre-wired reed tamper switches
- 10" motor driven bell
- Maximum 68 mA at 12 VDC
- Beige Finish
- Dimensions: 10.83"W x 10.83"H x 3.74"D

# Overhead Door Contacts

## Overhead Door Contact

ODC-56 Series



- 2" operating gap
- 24" stainless steel armored cable
- Fixed magnet position
- Dimensions: 4.33"W x 1.57"H x 0.4"D

## Overhead Door Contact

ODC-59 Series



- 2" operating gap
- Low profile switch enclosed in die-cast housing
- Magnet mounted on adjustable L-bracket
- 24" stainless steel armored cable
- Dimensions: 4.33"W x 1.57"H x 0.4"D

## Mini Overhead Door Contact

ODC-59 MINI



- 2" operating gap
- Low profile switch enclosed in die-cast housing
- Magnet mounted on adjustable L-bracket
- 24" stainless steel armored cable
- Dimensions: 3.7"W x 1.57"H x 0.4"D

## Horizontal Gap Overhead Door Contact

ODC-59A-HG Series



- 2" gap
- 7" horizontal gap
- Reduces false alarms on loose fitting overhead doors
- Low profile
- Magnet mounted L-bracket
- 24" stainless steel
- Dimensions: 5"W x 1.57"H x 0.4"D

# Surface Mount Magnetic Contacts

## Micro Mini Contact

AMS-9 Series



- Normally closed loop
- 1/2" Operating gap
- Magnet type: Alnico 5
- Self-adhesive and screw mount
- Small dual-purpose design
- 12" leads, AWG #22
- Colors: Brown, Gray, or Ivory
- Dimensions: 0.99"W x 0.26"H x 0.19"D

## Concealed Leads Contact

AMS-59



- Normally closed loop
- 3/4" operating gap
- Magnet type: Ferrite magnet
- No terminal cover needed
- Colors: Brown, Gray, or White
- Dimensions: 2.50"W x 0.31"H x 0.51"D

## Micro Surface/Press-Fit Contact

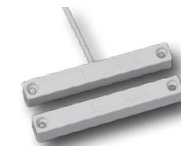
AMS-7 Series



- Available in N/O or N/C loop
- 3/4" operating gap
- Surface mount or 1/4" press-fit
- Adhesive/screw mount/press-fit
- Small dual-purpose design
- 12" leads, AWG #22
- Colors: Brown or White

## Industrial Magnetic Contact

AMS-37L



- 2" operating gap
- Normally closed loop
- 24" PVC jacketed leads, AWG # 22
- Colors: Brown or Gray
- Dimensions: 3.89"W x 0.51"H x 0.51"D

## Mini Contact with Leads and Snap-off Tabs

AMS-10 Series



- Normally closed loop 3/4" operating gap
- Self-adhesive and screw mount
- Alnico 5 magnet
- AMS-10C: Center leads
- AMS-10S: Side leads
- 24" leads, AWG #22
- Colors: Brown, Gray, or White
- Dimensions: 1.31"W x 0.57"H x 0.31"D

## Industrial Magnetic Contact

AMS-37



- 2" operating gap
- Normally closed loop
- Colors: Brown or Gray
- Dimensions: 3.89"W x 0.51"H x 0.51"D

\*AMS-37B Available with N/C or N/O loop

## Mini Contact with Terminals and Snap-off Tabs

AMS-T10C Series



- Normally closed loop 3/4" operating gap
- Self-adhesive and nail mount
- Alnico 5 magnet
- Covers included
- Colors: Brown or White
- Dimensions: 1.31"W x 0.57"H x 0.31"D

# Surface Mount Magnetic Contacts

## Mechanical Contact

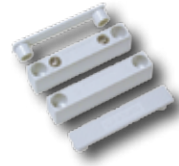
AMS-38B



- Available with N/C and N/O loop
- 5/8" operating gap
- AC rating: 300V 3 Amps
- Magnet type: Alnico 5
- Contact resistance under 150 mOhm
- Colors: Brown, Gray, or White
- Dimensions: 2.50"W x 0.31"H x 0.51"D

## Quick Connect Magnetic Contact with Covers

AMS-51CV



- 1" operating gap
- Self-adhesive or screw mount
- Magnet type: Alnico 5
- No wire stripping required
- Colors: Brown, Gray or White
- Fit up to AWG #22 solid or stranded leads
- Dimensions: 1.91"W x 0.35"H x 0.50"D

## Standard Surface Contact

AMS-39B



- Available with N/C and N/O loop
- 3/4" operating gap
- Magnet type: Ferrite magnet
- Colors: Brown or White
- Dimensions: 2.50"W x 0.51"H x 0.51"D

## AMS-10 Switch and AMS-20 Magnet Combo

AMS-12



- 5/8" operating gap (Face to side)
- 3/4" operating gap (Face to face)
- Magnet type: Alnico 5
- 12" leads AWG #22
- Colors: Brown or White
- Dimensions: 1.31"W x 0.57"H x 0.31"D

## 5-Pack Surface Contact with Hardware

AMS-39CVS



- Normally closed loop
- 3/4" operating gap
- Includes: screws, covers, and spacers
- Magnet type: Ferrite magnet
- Colors: Brown or White
- Dimensions: 2.50"W x 0.31"H x 0.51"D

## Standard Surface Contact

AMS-39



- Normally closed loop
- 3/4" operating gap
- Colors: Brown, Gray, or White
- Magnet type: Ferrite magnet
- Dimensions: 2.50"W x 0.31"H x 0.51"D

# Steel Door Magnetic Contacts

## 3/4" Press Fit Steel Door Contact

AMS-26 Series



\*AMS-26 Series Available with N/C or N/O loop

- 1-1/4" operating gap
- Magnet type: Alnico 5
- 24" leads, AWG #22
- Colors: Brown or Gray
- Dimensions: 0.75"OD x 1.56"L

## 3/4" Press Fit Steel Door Contact

AMS-25 Series



\*AMS-25 Series Available with N/C or N/O loop

- 3/4" operating gap
- Magnet type: Alnico 5
- 24" leads, AWG #22
- Colors: Brown, Gray, or Ivory
- Dimensions: 0.75"OD x 1.18"L

# Piezo Sounders

## Piezo-A-Lert

PAL Piezo



- Operates on 3 ~ 28 VDC
- Sound output: 93 dB at 3 feet
- 20 mA max. current draw at 28 VDC
- With or without nut
- Dimensions: 1.1"OD x 0.98"

## ESZ Sounder

ESZ Series



- Operates on 3 ~ 28 VDC
- Sound output: 102 dB at 1 foot
- 20 mA max. current draw at 28 VDC
- Dimensions: 1.6"OD x 1.0"

# High Security Contacts

## Anti-defeat Double Bias Contact (N/O, N/C Loop)

BMC-33B



- 1-3/8" ~ 3" operating gap
- 24" stainless steel armored cable
- Anodized aluminum housing
- 360° mounting capabilities
- Form C
- Dimensions: 3.94"W x 0.71"H x 0.51"

## High Security Safe and Vault Door Contact

HSC-1



- Tamper Resistant
- Triple-biased reed alarm switches
- Comes pre-wired with armor cable
- Narrow housing allows mounting on narrow door frames
- Listings: UL and ULC

## P2 Series High Security Sensor P2S and P2D



- Meets UL 634 Level 2 High Security Standard
- Resistant to External and Internal Magnetic defeat
- Unique cross hole mounting feature eliminates need for L and Z brackets on most installations
- Industry's most secure removal tamper sensor/circuit
- Resists permanent contact welding caused by lightning, power surges and stun guns
- Single and dual alarm contacts available

# Recessed Magnetic Contacts

## 3/8" Press Fit Terminal Type Mini Contact

AMS-T17



- 5/16" operating gap
- Magnet type: Alnico 5
- Screw Terminals
- Colors: Brown or White
- Dimensions: 0.43"OD x 0.94"L

\*Available AD-17 adapter housing allows 3/8" switch to be placed in 3/4" hole

## 3/8" Press Fit Terminal Type Contact

AMS-T21



- 5/8" operating gap
- Magnet type: Alnico 5
- Screw Terminals
- Colors: Brown or White
- Dimensions: 0.47"OD x 1.3"L

\*Available AD-17 adapter housing allows 3/8" switch to be placed in 3/4" hole

## 3/8" Press Fit Mini Contact

AMS-17



- 5/16" operating gap
- Magnet type: Alnico 5
- 12" leads, AWG #22
- Colors: Brown or White
- Dimensions: 0.43"OD x 0.64"L

\*Available AD-17 adapter housing allows 3/8" switch to be placed in 3/4" hole

## 3/8" Press Fit Recessed Contact

AMS-21 Series



- N/C Loop or N/O Loop
- 5/8" operating gap
- Magnet type: Alnico 5
- 24" leads, AWG #22
- Colors: Brown, Gray, or White
- Dimensions: 0.47"OD x 1.44"L

\*Available AD-17 adapter housing allows 3/8" switch to be placed in 3/4" hole

## 1/4" Press Fit Contact

AMS-20



- 5/8" operating gap
- Magnet type: Alnico 5
- 24" leads, AWG #22
- Colors: Brown, Gray, or White
- Dimensions: 0.25"OD x 1.18"L



# Rare Earth Recessed Contacts

## 3/8" Mini-Recessed Contact

AMS-R17 Series

- 5/8" operating gap
- Rare Earth magnet
- Optional AD-17 adapter available
- Color: White
- Listing: UL

## 3/8" Recessed Contact

AMS-R21 Series

- 5/8" operating gap
- Rare Earth magnet
- Color: White
- Listing: UL

# Roller Ball Switches

## 3/4" Omnidirectional Plunger Wheel Switch

RSW-50 Series

- N/C Loop or N/O Loop
- 3 mm pre-travel stroke
  - 5.8 mm overall stroke
  - Colors: Brown or White



NOT AVAILABLE IN THE U.S. MARKET

## 3/4" Press Fit Roller Ball Switch

RSW-21 Series



- Hardened stainless steel ball
- 25" leads, AWG #22
- 3 mm pre-travel stroke
- 5.2 mm overall stroke
- Color: Ivory
- RSW-21S Spacer

## 4-Conductor Cords

ADC Series



- Available in 12" or 18" (jacketed)
- Colors: Brown or Gray

## 2-Conductor Door Cord

RDC-9



- Available in 11", 22", 24", or 48"
- Exclusive reversible housing
- Concealed wires and protective boot
- Normal length 21"
- Extended length 44"
- Colors: Brown or Ivory

## 2-Conductor Cords

NDC Series



- Available in 12" or 18"
- Exclusive reversible housing
- Concealed wires and protective boot
- Colors: Brown, Gray, or Ivory

## 2-Conductor Retractable Cord

RDC-36



- 1" gap magnetic contact
- Concealed wires and protective boot
- Normal length 11"
- Extended length 48"
- Colors: Brown or Ivory\* (Special Order)

## 2-Conductor Retractable Cords

NRC Series



- Available in 24" or 48"
- Exclusive reversible housing
- Concealed wires and protective boot
- Colors: Brown, Gray, or Ivory

# Door Announcers / People Counters

## Electronic Chime with Volume Control

CM-4



- Operates on 12V AC/DC
- 0-85 dB adjustable sound
- 2 distinctive chime sounds
- Selectable Hi/Lo frequency sound
- Includes: Electronic chime with volume control and 26 ft. 4 conductor (AWG #22) wire with a 4-pin female connector installed at one end
- Optional extra chime for EBP-407C

## Electronic Chime Kit with LED

CM-4L Kit



- Operates on 12V AC/DC
- 0-85 dB adjustable sound
- 2 distinctive chime sounds
- Selectable Hi/Lo frequency sound
- Choice of positive or negative chime trigger
- Two way flashing light
- Includes: Electronic chime with volume control and LED light, AES-1 Push Button, transformer, and 26 ft. 4 conductor (AWG #22) wire with a 4-pin female connector installed at one end

## Electronic Chime Kit

CM-4 Kit



- Operates on 12V AC/DC
- 0-85 dB adjustable sound
- 2 distinctive chime sounds
- Selectable Hi/Lo frequency sound
- Choice of positive or negative chime trigger
- Includes: Electronic chime with volume control, AES-1 Push Button, transformer, and 26 ft. 4 conductor (AWG #22) wire with a 4-pin female connector installed at one end

## Electronic Chime

CM-5



- 12V DC input
- 4 selectable chime sounds
- Adjustable sound level
- Includes electronic chime and 26 ft. lead
- Optional extra chime for EBP-401

## Electronic Chime with LED

CM-4L



- Operates on 12V AC/DC
- 0-85 dB adjustable sound
- 2 distinctive chime sounds
- Selectable Hi/Lo frequency sound
- Choice of positive or negative chime trigger
- Two way flashing light
- State-of-the-art reflective lens
- Includes: Electronic chime with volume control and LED light and 26 ft. 4 conductor (AWG #22) wire with a 4-pin female connector installed at one end

## Wireless Chime Kit with Volume Control for EWP-202C

CMW-202 Kit



- 200 ft. wireless (RF) range transmission
- 2 distinctive chime sounds
- Choice of negative or positive chime trigger
- Selectable Hi/Lo frequency sound
- Includes: Wireless electronic chime, transformer, and wire

# Door Announcers / People Counters

## Video-Eye™ Digital Video People Counter

VDP-100



- Entry/Exit bidirectional people counter using CMOS Camera
- Precise entry/exit recognition using digital signal processor and unique algorithm
- Easy installation - no reflector required
- NTSC video output capability for monitoring camera use
- Entry/Exit traffic counting (6-digit)
- Power failure memory back-up
- Volume control

## Wireless Traffic Counter and Announcer

EWP-202C



- Remote entry/exit resettable counter (6-digit)
- 200 ft. wireless (RF) transmission
- 16 million security I.D. codes
- Wireless push button for back door included
- Power failure memory back-up
- Includes: 6-digit counter, IR beam sensor, chime, wireless push button, reflector, mounting brackets, transformer, and wire

## Door Announcer System

EBP-401



- 40 ft. operating distance across doorway
- Exclusive entry and exit infrared beams
- Adjustable volume control
- Includes: IR beam sensor, chime, reflector, mounting brackets, transformer, and wire

## Extra Wireless Push Button

EWPP-202



- 200 ft. wireless (RDF) range transmission
- Includes: 2.3A, 12 VDC battery

## Counter and Announcer Chime with Volume Control

EBP-407C



- Digital, resettable traffic counter (4-digit)
- 20 ft. operating distance across doorway
- Exclusive entry and exit infrared beams
- Chime with volume control
- Includes: 4-digit counter, IR beam sensor, chime, reflector, mounting brackets, transformer, and wire



EBP-407LC

# Security Products List

## External Motion Detectors

Stock #	Model #	Description
4100001	PIR-TECT 1	External Motion Detector
4100002	PIR-TECT 2	Dual Technology External Motion Detector
4100005	PIR-305	Conduit Adapter Ring
4100006	PIR-306	Pole Mount Clamp
4100007	PIR-307	Walk Tester

## Plunger Tamper Switches

Stock #	Model #	Description
4360006	PSW-1	N.O. Plunger SPST Reed Switch Ivory 25" Leads
4360005	PSW-1H	Adaptor Housing For Plunger Switch
4360008	PSW-2	N.O., N.C. Plunger Reed Switch Grey 25" Leads
4360009	PSW-2	N.O., N.C. Plunger Reed Switch Ivory 25" Leads
4360007	PSW-2	N.O., N.C. Plunger Reed Switch Brown 25" Leads
4360012	PSW-21	3/8" SPST Press-Fit Plunger Ivory 25" Leads
4360010	PSW-21	3/8" SPST Press-Fit Plunger Brown 25" Leads
4360011	PSW-21	3/8" SPST Press-Fit Plunger Grey 25" Leads
4360013	PSW-22	3/8" SPST Press-Fit Plunger With Flange 25" Leads
4400007	TSW-2T	Mechanical Tamper Switch (N/C Loop) 0.5" Overall Operating Stroke Ivory

## Emergency Switches

Stock #	Model #	Description
4400016	AES-1	Emergency Push Button Switch Ivory
4400017	ABS-1	Blank Push Button Switch Ivory

## Specialty Switches

Stock #	Model #	Description
4470001	AMPS-10A	5/16" Gap Pull-Apart Surface Mount (N.C. Loop) White
4470003	AMPS-21A	5/16" Gap Pull-Apart Recessed Mount (N.C. Loop) White
4390001	AMC-2	N.O./N.C. Money Clip Switch
4300020	QDC-2	Two Conductor 21" Quick Disconnect Cord
2020014	FDT-J	Flexible Door Trap Jack
2020015	FDT-P	Flexible Door Trap Plug
1010108	RTS-O	Room Temperature Switch, SPST, N.C.
1010108	RTS-C	Room Temperature Switch, SPST, N.C.
4440003	AFS-101B	Armored Cable Fence Detector

## Sensors

Stock #	Model #	Description
4340003	GSC-20N	Glass Break Sensor N.C. Loop
4420003	OFL-331	Fluid Level Sensor With L-Bracket N.O./N.C.

## Vault & Safe Protection

Stock #	Model #	Description
2000100	VSA-SF	Vault Sound Alarm System, Flush Mount
2000050	VSA-S	Vault sound Alarm System, Surface Mount, (one each)
2000103	VSA	Amplifier Unit
2000008	PSM	Microphone, Surface Mount
2000041	PSM-T	Microphone With Test Buzzer, Surface Mount
5130080		Battery 6V, 4AH

4550019		Transformer
2000034	PSM-F	Microphone, Flush Mount
2000035	PSM-FT	Microphone With Test Buzzer, Flush Mount
2020290	EVD-1	Electronic Vibration Detection System For Safes, Stand-Alone
2020300	EVD-2	Electronic Vibration Detection System For Safes, Microprocessor Based
2020250	EVD-M	Master Unit, Same as EVD-1 But Expandable
2020260	EVD-R	Pick-Up Unit
2020310		Power Supply for EVD-1 and EVD-2 (if necessary)
2020320		Transformer for EVD-1 and EVD-2 (if necessary)
2020230	EVD-1C	Safe Pak, EVD-1 With HSC-1
2020240	EVD-2C	Safe/Vault Pak, EVD-2 With HSC-1
2020200	EVD-S	Electronic Vibration Detection System for Safes
2020127	EVD-C	Amplifier Unit
2020126	EVD-P	Pick-Up Unit (must order two per system)
2000076	VSA-2K	VSA-1, VSM, RTA
2000075	VSA-1K	VSA-1, RTA
2000070	VSA-1	Integrated Control and Microphone
2000071	VSM	Microphone
2000072	VFM	Flush Mount Kit

## Vault & Safe Accessories

Stock #	Model #	Description
2000073	RTA	Remote Test Annunciator for VSA-2 Series
2020270	RTA	Remote Test Annunciator for EVD-1 and EVD-2
5210408	B Cable	High Security Cable (100' per roll)
2000106	APC	Accumulator Pulse Counter for VSA System
2020128	APC-B	Accumulator Pulse Counter for EVD-S System
2020121	PTU-B	Remote Test Annunciator for EVD-S & VSA Systems
2020350	HSC-1	High Security Safe Contact, SPDT Contact

## Hold-Up Switches

Stock #	Model #	Description
2020130	HUB-M	Hold-Up Button, DPDT, One Button, Latching or Momentary
2020132	HUB-T	Hold-Up Button, DPDT, Two Buttons, Latching or Momentary
4370034	HUS-7A	Hold-Up Switch Tool Resettable SPDT (N.O., N/C. Loop)
4370038	HUSK-20	Hold-Up Key Resettable Switch SPDT (N.O., N/C. Loop)
4370037	HUSD-15BM	Momentary Type, Double Hold-Up Switch SPDT (N.O., N/C. Loop)
4370036	HUSD-15BL	Latching Type, Double Hold-Up Switch SPDT (N.O., N/C. Loop)
4370039	HUSK 20	Reset Key

## Sirens & Siren/Strobes

Stock #	Model #	Description
4150024	SSX-52	Indoor/Outdoor 6-12 VDC Self-Contained Siren Beige 120dB
4150025	SSX-52SA	Indoor/Outdoor 12 VDC Self-Contained Siren/Strobe Beige Amber Lens 120dB

# Security Products List

4150026	SSX-52SB	Indoor/Outdoor 12 VDC Self-Contained Siren/Strobe Beige Blue Lens 120dB
4150027	SSX-52SC	Indoor/Outdoor 12 VDC Self-Contained Siren/Strobe Beige Clear Lens 120dB
4150028	SSX-52SR	Indoor/Outdoor 12 VDC Self-Contained Siren/Strobe Beige Red Lens 120dB
4150032	SSX-82	Indoor/Outdoor 25 Watt 12 VDC Siren Beige 127dB
4150033	SSX-82SA	Indoor/Outdoor 25 Watt 12 VDC Siren/Strobe Amber 127dB
4150034	SSX-82SB	Indoor/Outdoor 25 Watt 12 VDC Siren/Strobe Blue 127dB
4150035	SSX-82SC	Indoor/Outdoor 25 Watt 12 VDC Siren/Strobe Clear 127dB
4150036	SSX-82SR	Indoor/Outdoor 25 Watt 12 VDC Siren/Strobe Red 127dB

## Speakers

Stock #	Model #	Description
4210004	SHX-51	Indoor/Outdoor 15 Watt 12 VDC Armored Speaker Beige
4210005	SHX-51S	Indoor/Outdoor 15 Watt 12 VDC Armored Speaker/Strobe Amber
4210007	SHX-51S	Indoor/Outdoor 25 Watt 12 VDC Armored Speaker/Strobe Clear
4210008	SHX-51S	Indoor/Outdoor 25 Watt 12 VDC Armored Speaker/Strobe Red
4210006	SHX-51S	Indoor/Outdoor 25 Watt 12 VDC Armored Speaker/Strobe Blue
4170002	VSD-208	Voice Siren Driver w/ Barking Dog
4170003	VSD-308	Recordable Siren Driver
4150001	SS-2	Indoor/Outdoor 12 VDC Dual Tone Indoor Dynamic Flat Siren 108dB
4150002	FSS-26T	Indoor/Outdoor 12 VDC Six-Tone Trumpet Siren 125dB

## Conical Strobes

Stock #	Model #	Description
4190016	SL-401	12 VDC Strobe Amber Lens
4190017	SL-401	12 VDC Strobe Blue Lens
4190018	SL-401	12 VDC Strobe Clear Lens
4190019	SL-401	12 VDC Strobe Red Lens
4670028	SL-5A	12/24 VDC 4 Wire Strobe Amber Lens
4670027	SL-5A	12/24 VDC 4 Wire Strobe Blue Lens
4670026	SL-5A	12/24 VDC 4 Wire Strobe Clear Lens
4670029	SL-5A	12/24 VDC 4 Wire Strobe Red Lens
4270043	4SP-M(W)	4SP-MW MOUNTING PLATE FOR SL-5

## Burglar Bells

Stock #	Model #	Description
4030002	MBA-10G12PV2	Motor Driven General Signaling Bell (Gray)
4010003	ABB-1014	Bell Box Hinged Almond
4010009	ABB-1033	12VDC Motor Bell With Hinged Box Beige

## Piezo Sounders

Stock #	Model #	Description
4050001	PAL-328	Piezo Without Nut
4050002	PAL-328N	Piezo With Nut
4050004	ESZ-25S	Piezo Single Tone
4050003	ESZ-25B	Piezo Steady/ Pulsate Tone
4050005	ESZ-26B	Piezo Dual Tone

## Overhead Door Contacts

Stock #	Model #	Description
4410014	ODC-56A	SPST Overhead N/C Loop
4410015	ODC-56B	SPDT Overhead (Form C)
4410017	ODC-59 Mini	Mini Overhead Door Contact
4410003	ODC-59A	SPST Overhead Switch With L Bracket
4410006	ODC-59B	SPDT Overhead Switch With L Bracket
4410004	ODC-59A-36	36" S/S Armored Cable
4410018	ODC-59A-HG	SPST Horizontal Gap Overhead Door Contact
4410019	ODC-59B-HG	SPDT Horizontal Gap Overhead Door Contact
4270005	L BRACKET 59	L-Bracket for ODC-59 (27-110L)

## Surface Mount Magnetic Contacts

Stock #	Model #	Description
4350219	AMS-7	3/4" Gap Micro-Mini Surface/Pressfit Contact N.C. Brown
4350220	AMS-7	3/4" Gap Micro-Mini Surface/Pressfit Contact N.C. White
4350222	AMS-9	1/2" Gap Micro-Mini Surface Mount Contact N.C. Ivory
4350090	AMS-9	1/2" Gap Micro-Mini Surface Mount Contact N.C. Brown
4350091	AMS-9	1/2" Gap Micro-Mini Surface Mount Contact N.C. Grey
4350093	AMS-9MG	Mag Only Ivory
4350098	AMS-10C	3/4" Gap Mini Contact Center Leads N.C. Brown
4350100	AMS-10C	3/4" Gap Mini Contact Center Leads N.C. Grey
4350108	AMS-10C	3/4" Gap Mini Contact Center Leads N.C. White
4350099	AMS-10S	3/4" Gap Mini Contact Side Leads N.C. Brown
4350101	AMS-10S	3/4" Gap Mini Contact Side Leads N.C. Grey
4350104	AMS-10S	3/4" Gap Mini Contact Side Leads N.C. Ivory
4350109	AMS-10S	3/4" Gap Mini Contact Side Leads N.C. White
4350106	AMS-T10C(B)	3/4" Gap Mini Contact Terminal Type N.C. Brown
4350107	AMS-T10C(W)	3/4" Gap Mini Contact Terminal Type N.C. White
4350111	AMS-10MG	Magnet Only Grey
4350112	AMS-10MG	Magnet Only Ivory
4350113	AMS-10MG	Magnet Only White
4350027	AMS-10MG	Magnet Brown
4350168	AMS-37	2" Gap Industrial Magnetic Contact N.C. Brown
4350170	AMS-37	2" Gap Industrial Magnetic Contact N.C. Grey
4350180	AMS-37H	Case Spacer Brown
4350181	AMS-37H	Case Spacer Grey
4350060	AMS-37L	2" Gap Industrial Magnetic Contact 24" Leads N.C. Brown
4350172	AMS-37LG	2" Gap Industrial Magnetic Contact 24" Leads N.C. Grey
4350174	AMS-37LG	2" Gap Industrial Magnetic Contact 48" Leads N.C. Grey
4350178	AMS-37MAG	Magnet and L-Bracket Gray
4350177	AMS-37MG	Alnico 2 Magnet Grey
4350182	AMS-37S	Flat Spacer Brown
4350183	AMS-37S	Flat Spacer Grey
4370003	AMS-38B	5/8" Gap Surface Mount AC Rated Mechanical Contact N.C./N.O. Ivory
4370013	AMS-38B	5/8" Gap Surface Mount AC Rated Mechanical Contact N.C./N.O. Brown
4370015	AMS-38B	5/8" Gap Surface Mount AC Rated Mechanical Contact N.C./N.O. Grey
4370017	AMS-38B	5/8" Gap Surface Mount AC Rated Mechanical Contact N.C./N.O. White



# Security Products List

4370021	AMS-38MG	Magnet Only White
4370005	AMS-38MG(B)	Magnet Only Brown
4370028	AMS-38S	Flat Spacer AMS3839 Brown
4370029	AMS-38S	Flat Spacer AMS3839 Grey
4370031	AMS-38S	Flat Spacer AMS3839 White
4440004	BMC-33B	3" Gap Anti-Defeat Double Bias Contact 24" Armored Cable
4350187	AMS-39	3/4" Gap Standard Surface Mount Contact N.C. Brown
4350188	AMS-39	3/4" Gap Standard Surface Mount Contact N.C. Grey
4350190	AMS-39	3/4" Gap Standard Surface Mount Contact N.C. White
4350202	AMS-39B	3/4" Gap Standard Surface Mount Contact N.C./N.O. Brown
4350204	AMS-39B	3/4" Gap Standard Surface Mount Contact N.C./N.O. White
4350184	AMS-39CVS	3/4" Gap Surface Mount Contact N.C. Brown w/ Screws, Covers, and Spacers
4350067	AMS-39CVS	3/4" Gap Surface Mount Contact N.C. Grey w/ Screws, Covers, and Spacers
4350185	AMS-39CVS	3/4" Gap Surface Mount Contact N.C. Ivory w/ Screws, Covers, and Spacers
4350186	AMS-39CVS	3/4" Gap Surface Mount Contact N.C. White w/ Screws, Covers, and Spacers
4350191	AMS-39MG	Magnet Only Brown
4350193	AMS-39MG	Magnet Only White
4350075	AMS-39MG	Magnet Only Grey
4350198	AMS-8C	Cover For AMS-38/39 Brown
4350199	AMS-8C	Cover For AMS-38/39 Grey
4350201	AMS-8C	Cover For AMS-38/39 White
4350215	AMS-51CVM	1" Gap Surface Mount Quick Connect Magnet w/ Cover N.C. White
4350211	AMS-51CV	1" Gap Surface Mount Quick Connect Contact w/ Cover N.C. Brown
4350212	AMS-51CV	1" Gap Surface Mount Quick Connect Contact w/ Cover N.C. Grey
4350213	AMS-51CV	1" Gap Surface Mount Quick Connect Contact w/ Cover N.C. White

## Steel Door Contacts

Stock #	Model #	Description
4350158	AMS-25A	3/4" Press Fit Steel Door Contact N.C. Grey
4350159	AMS-25A	3/4" Press Fit Steel Door Contact N.C. Ivory
4350051	AMS-25A	3/4" Press Fit Steel Door Contact N.C. Brown
4350157	AMS-25B	3/4" Press Fit Steel Door Contact N.C./N.O. Grey
4350052	AMS-25B	3/4" Press Fit Steel Door Contact N.C./N.O. Brown
4350160	AMS-26A	1 1/4" Press Fit Steel Door Contact N.C. Grey
4350056	AMS-26A	1 1/4" Press Fit Steel Door Contact N.C. Brown
4350232	AMS-26B	1 1/4" Press Fit Steel Door Contact N.O./N.C. Brown
4350233	AMS-26B	1 1/4" Press Fit Steel Door Contact N.O./N.C. Grey

## High Security Contacts

Stock #	Model #	Description
4440004	BMC-33B	Anti-Defeat Double Bias Contact
2020350	HSC-1	SPDT High Security Contact
2020420	P2D	Level 2 Dual Contact High Security Switch
2020410	P2S	Level 2 High Security Contact

## Recessed Magnetic Contacts

Stock #	Model #	Description
4350118	AMS-17	5/16" Gap Press Fit Recessed (N/C Loop) Switch & Magnet 3/8" Brown
4350121	AMS-17	5/16" Gap Press Fit Recessed (N/C Loop) Switch & Magnet 3/8" White
4350037	AMS-17MG	3/8" Recessed Magnet White
4350124	AMS-17MG	3/8" Recessed Magnet Brown
4350001	AMS-R17	5/8" Gap Press Fit Recessed (N/C Loop) Switch & Magnet 3/8" Rare Earth
4350003	AMS-RT17	5/8" Gap Press Fit Recessed Terminal Type (N/C Loop) Switch & Magnet 3/8" Rare Earth
4350133	AMS-20	5/8" Gap Press Fit Recessed Mini Contact 1/4" (N/C Loop) Switch & Magnet Brown 24" Leads
4350136	AMS-20	5/8" Gap Press Fit Recessed Mini Contact 1/4" (N/C Loop) Switch & Magnet White 24" Leads
4350137	AMS-20MG	1/4" Bare Alnico Magnet
4350141	AMS-21	5/8" Gap Press Fit Recessed (N./C. Loop) Switch & Magnet 3/8" Brown
4350143	AMS-21	5/8" Gap Press Fit Recessed (N./C. Loop) Switch & Magnet 3/8" Ivory
4350144	AMS-21	5/8" Gap Press Fit Recessed (N./C. Loop) Switch & Magnet 3/8" White
4350150	AMS-21D	5/8" Gap Press Fit Recessed (N./O. Loop) Switch & Magnet 3/8" White
4350151	AMS-21P	3/8" Prewire Plug Brown
4350152	AMS-21P	3/8" Prewire Plug Ivory
4350226	AMS-T21	5/8" Gap Press Fit Recessed Terminal Type (N./C. Loop) Switch & Magnet 3/8" Brown
4350097	AMS-T21	5/8" Gap Press Fit Recessed Terminal Type (N./C. Loop) Switch & Magnet 3/8" White
4350240	AMS-R21	5/8" Gap Press Fit Recessed (N./C. Loop) Switch & Magnet 3/8" Rare Earth
4350016	AMS-RT21	5/8" Gap Press Fit Recessed Terminal Type (N./C. Loop) Switch & Magnet 3/8" Rare Earth
4350001	AMS-R17	3/8" Gap Rare Earth Mini Recessed Contact 22 AWG 12" Lead White
4350003	AMS-RT17	3/8" Gap Rare Earth Mini Recessed Contact Terminal Lead White
4350128	AD-17	Spacer to allow 3/8" Switch to be Placed in 3/4" Hole
4350147	AMS-21MG	3/8" Alnico Magnet Ivory
4350148	AMS-21MG	3/8" Alnico Magnet White
4350048	AMS-21MG	3/8" Alnico Magnet Brown

## Roller Ball Switches

Stock #	Model #	Description
4430005	RSW-21A	3/4" Press Fit N.O. Rollerball Switch Brown
4430006	RSW-21A	3/4" Press Fit N.O. Rollerball Switch Gray
4430003	RSW-21A	3/4" Press Fit N.O. Rollerball Switch Ivory
4430007	RSW-21B	3/4" Press Fit N.O./N.C. Rollerball Switch Ivory
4430008	RSW-21-S	Flat Spacer Ivory
4430010	RSW-50A	Roller Switch N.C.
4300014	ADC-412	Brown 4 Conductor 12" Door Cord
4300015	ADC-412	Gray 4 Conductor 12" Door Cord
4300034	ADC-418	Brown 4 Conductor 18" Door Cord
4300035	ADC-418	Gray 4 Conductor 18" Door Cord
4300023	NDC-212	Brown 2 Conductor 12" Door Cord



4300024	NDC-212	Grey 2 Conductor 12" Door Cord
4300025	NDC-212	Ivory 2 Conductor 12" Door Cord
4300026	NDC-218	Brown 2 Conductor 18" Door Cord
4300027	NDC-218	Grey 2 Conductor 18" Door Cord
4300028	NDC-218	Ivory 2 Conductor 18" Door Cord
4300002	NRC-11	Brown 24" Retractable Door Cord
4300021	NRC-11	Grey 24" Retractable Door Cord
4300022	NRC-11	Ivory 24" Retractable Door Cord
4300029	NRC-22	Brown 48" Retractable Door Cord
4300030	NRC-22	Grey 48" Retractable Door Cord
4300031	NRC-22	Ivory 48" Retractable Door Cord
4300036	RDC-9	Brown 21" Retractable Door Cord
4300037	RDC-9	Ivory 21" Retractable Door Cord
4300032	RDC-36	Brown 48" Retractable Door Cord w/ Switch

## Door Announcers and People Counters

Stock #	Model #	Description
4130033	VDP-100	CCTV Based Video People Counter System
4130030	EBP-401	Door Announcer Kit
4130015	EBP-407C	Dual Counter Door Announcer System
4130022	EBPT-407	Transmitter For EBP-407C
4130029	EHP-500S	2-Zone Counter And Announcer, 40 Ft. Range
4130003	EWP-202C	Wireless Door Announcer
4130006	EWPT-202	Transmitter
4130007	REF-202	Reflector For EWP-202C
4130017	EHP-500R	Two Channel Traffic Counter Recess
4060001	CM-13	6-12 VDC Chime Mechanical
4130031	CM-5	12VDC Chime EBP-401
4060002	CM-4	Chime Electronic
4060003	CM-4KIT	Chime (Kit) Electronic
4060004	CM-4L	Chime w/LED Electronic
4060005	CM-4LKIT	Electronic Chime (Kit)



At Potter Electric Signal Company, LLC,  
QUALITY is the first order of business. Since 1898, we have served the Security and Fire Sprinkler industries on a world-wide basis. Today, we manufacture a full line of sprinkler monitoring devices, fire alarm panels, releasing control panels, vault, safe, & security systems and peripherals.

We strive to provide you with the finest products and technical support in the industry. You will also receive prompt service from a dedicated team of professionals. After all, you, the customer, are the most important member of our team. So give us a call.

Potter Electric Signal Company, LLC  
5757 Phantom Drive, Suite 125  
St. Louis, MO 63042

Office Hours:  
Monday - Friday  
8:00 AM - 5:00 PM, CST

General Manager - Canada  
Ralph Coco

Phone: 800-325-3936 • Fax: 800-768-8377  
[www.pottersignal.com](http://www.pottersignal.com)