

## Modular Plugs



### Cat 5 Short Body Plug for Stranded

Available in standard type with insert, shielded and unshielded  
Part no. PLUG-8P8C-P-SHORT-C5

### Cat 5 Universal Plug

Available in Cat 5 and Cat 6  
Part no. PLUG-8P8C-U-C5

### Cat 6 Shielded Universal Plug

Available in Cat 5 and Cat 6  
Part no. PLUG-8P8C-U-C6-SH



### Cat 6 Universal Plug with Insert

Available in Cat 5 and Cat 6  
Part no. PLUG-8P8C-UV-C6



### Cat 5 Shielded Universal Plug with Insert

Available in Cat 5 and Cat 6  
Part no. PLUG-8P8C-UV-C5-SH

## Patch Cords



### Cat 5e RJ45 Snagless Unshielded Patch Cord

Available in Cat 5e and Cat 6  
Part no. PC-LPM-UTP-RJ45-C5E-YYY-BK



### Cat 6 RJ45 Snagless Shielded Patch Cord

Available in Cat 5e and Cat 6  
Part no. PC-LPM-STP-RJ45-C6-YYY-GY

Available in 1, 2, 3, 4, 5, 7, 10, 15 or 25 feet  
Special order for 50, 75, 100 or 200 feet  
YYY = number of feet required

\* Colours Available are:

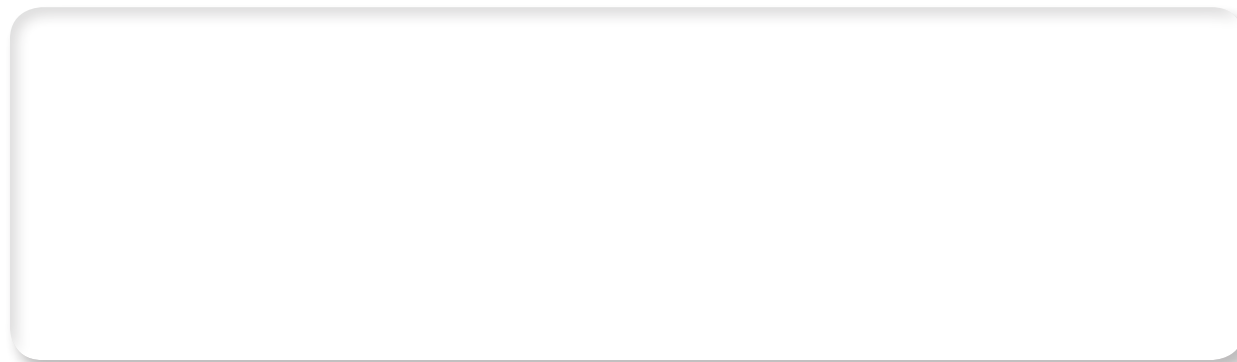


www.hyperline.com

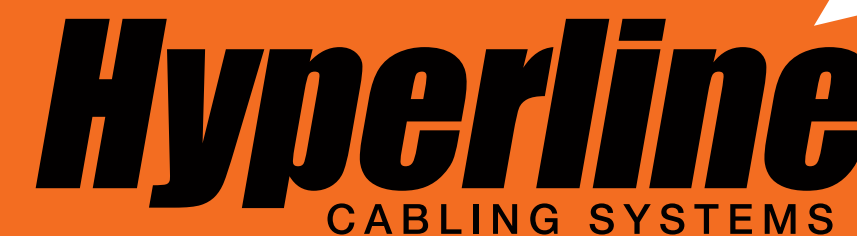
# New Brand, New Game

*New beginnings with traditional values*

Contact your local distributor



United States (888) 497-3748 Canada (866) 634-9737



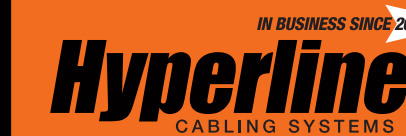
# New Brand, New Game

*New beginnings with traditional values*



www.hyperline.com info@hyperline.com

## Work Area Outlet



### Faceplate



Faceplate American Standard 2.8" x 4.5" 3 Ports  
Available in 1, 2, 3, 4 and 6 ports  
Part no. FP-U-3-WH\*



Faceplate American Standard 2.8" x 4.5" with Label Window 2 Ports  
Available in 1, 2, 3, 4 and 6 ports  
Part no. FP-UM-2-WH\*

\* Colours Available are:



Faceplate American Standard 2.8" x 4.5" with Shutter 4 Ports  
Available in 1, 2 and 4 ports  
Part no. FP-US-4-WH



Faceplate American Standard 2.8" x 4.5" Angled 1 Port  
Available in 1, 2 and 4 ports  
Part no. FP-UA-1-WH

### Faceplate Insert



Blank Insert for Faceplate  
Part no. KI1-BL-WH

### Surface Wall Mount Box RJ45, Cat 5e/Cat 6



Cat 5e 2 Port  
Available shielded and unshielded, in 1 and 2 ports  
Part no. SB-2-8P8C-C5E-WH



Cat 5e 1 Port Shielded  
Available in Cat 5e and Cat 6, in 1 and 2 ports  
Part no. SB-2-8P8C-C5E-SH-WH



Cat 6 1 Port  
Available in Cat 5e and Cat 6, in 1 and 2 ports  
Part no. SB2-1-8P8C-C6-WH

### Surface Mount Housing Type 1/Type 2

#### Type 1



Housing Type 1 with 1 Port  
Available in 1 and 2 ports  
Part no. SBB1-1-WH\*

#### Type 2



1 Port SIP for Housing Type 2  
Part no. SIP-SBB2-1-WH\*



2 Port SIP for Housing Type 2  
Part no. SIP-SBB2-2-WH\*



Housing Type 2 with 1 Slot  
Available in 1, 2 or 3 slot  
Part no. SBB2-1-WH\*



Cat 6 Housing 2 Ports with Shutter  
Available in 1 and 2 ports  
Part no. SBB1-2-C6-WH\*



Fully Assembled  
Housing Type 2 with 1 Port SIP  
(Housing and SIP Sold Separately)



Fully Assembled  
Housing Type 2 with 2 Port SIP  
(Housing and SIP Sold Separately)



Unassembled

# Patch Panels



## 19" Rack Mount Patch Panels



**Cat 5e 24 Port 110 Type**  
Available in Cat 5e and Cat 6, in 24 and 48 ports.  
*Rear manager sold separately*  
Part no. PP3-19-24-8P8C-C5E-110

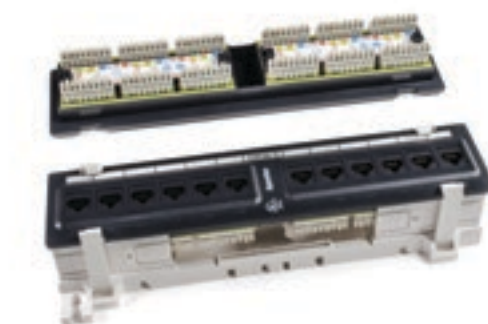


**Cat 6A 24 Port Shielded Dual Type**  
Available shielded and unshielded, in 24 and 48 ports High Density 1 unit  
Part no. PP2-19-24-8P8C-C6A-SH-110D



**Cat 6 24 Ports Angled 110 Type**  
Available in Cat 5e and Cat 6  
Part no. PP2A-19-24S-8P8C-C6-110

## Wall Mount Patch Panels



**Cat 5e 12 Port 110 Type**  
Available in Cat 5e and Cat 6  
Part no. PPW1-12-8P8C-C5E

## Wall Mount Patch Panels (Front Access)

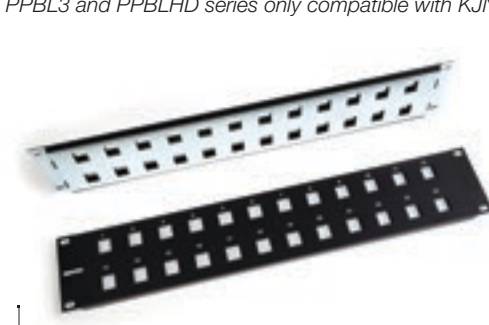


**Cat 5e 24 Port 110 Type**  
Available in 12 and 24 ports  
Part no. PPW1-24-8P8C-C5E-FR

# Patch Panels

## 19" Blank Patch Panels

PPBL3 and PPBLHD series only compatible with KJNE Keystone Jacks



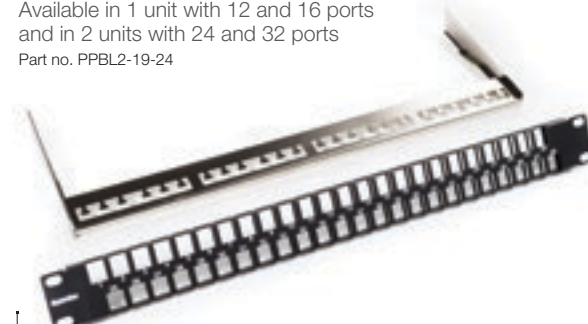
**Blank Panel 24 Ports**  
Available in 1 unit with 12 and 16 ports and in 2 units with 24 and 32 ports  
Part no. PPBL2-19-24



**Blank Panel 24 Ports with Rear Cable Manager**  
Available in shielded and unshielded  
Part no. PPBL3-19-24-RM



**Blank Panel 24 Ports Staggered**  
Part no. PPBL3-19-24S-RM

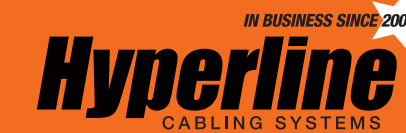


**Blank Panel, High Density, 48 Ports, Staggered, 1 Unit, Shielded with Rear Cable Manager**  
Part no. PPBLHD-19-48S-BK-RM



**Blank Panel, High Density, 48 Ports, Staggered, 1 Unit, Black with Rear Cable Manager**  
Part no. PPBLHD-19-48S-SH-FM

# Cable Managers



## Plastic



**1 Unit**  
Available in 1 and 2 units  
Part no. CM-1U-PL



**2 Unit with Cover**  
Available in 1 and 2 units  
Part no. CM-2U-PL-COV



**2 Unit Double Side**  
Available in 1 and 2 units  
Part no. CM-2U-PL-DBL

## Metal



**2 Unit**  
Available in 1 and 2 units  
Part no. CM-2U-ML



**1 Unit with Cover**  
Available in 1 and 2 units  
Part no. CM-1U-ML-COV

# Keystone Jacks

## Keystone Jack RJ45 Vertical Type



**Cat 6 RJ45 Dual IDC**  
Available in Cat 5e and Cat 6  
Part no. KJ2-8P8C-C6-90-WH

## Easy Jacks RJ45 for Termination with E-Tool



**Cat 5e RJ45 Fully Shielded**  
Available in Cat 5e and Cat 6  
Part no. KJNE-8P8C-C5E-90-SH-F



**Cat 6 RJ45 Unshielded**  
Available in Cat 5e and Cat 6  
Part no. KJNE-8P8C-C6-90-BL



**Cat 6A RJ45 Fully Shielded**  
Part no. KJNE-8P8C-C6A-90-SH-F



**Cat 6A RJ45 Unshielded**  
Part no. KJNE-8P8C-C6A-90-BL

\* Colours Available are:



HT-KJNE-TOOL recommended crimping tool for KJNE Keystone Jacks

# Tools

## Easy Tool (E-Tool) & Blade



**Crimping Tool for KJNE Series Keystone Jack**  
Part no. HTKJNE-TOOL

**Replacement Blade for KJNE Crimping Tool**  
Part no. HT-KJNE-BLD

## Impact Punch Down Tool & Blade



**Impact Punch Down Tool**  
Part no. HT-3140

**Type 110/66 Blade for HT-3140 Impact Punch Down Tool**  
Part no. HT-14A

**Type 110 Blade for HT-3140 Impact Punch Down Tool**  
Part no. HT-14B

## Crimping Tool



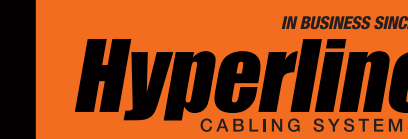
**Crimping Tool for RJ11, RJ12 and RJ45**  
Part no. HT-2014

## Cable Stripper



**Cable Stripper**  
Part no. HT-318

# Bulk Copper Cable



## Category 5E (RISER & PLENUM)



**Cat 5e 4-Pair Solid Riser**  
Available in Plenum and Riser  
Part no. UTP4-C5E-SOLID-CMR-BL-305



**Cat 5e 4-Pair Shielded Plenum**  
Available in Plenum and Riser  
Part no. FUTP4-C5E-SOLID-CMP-BL-305

## Category 6 (RISER & PLENUM)



**Cat 6 4-Pair Solid Riser**  
Available in Plenum and Riser  
Part no. UTP4-C6-SOLID-CMR-BL-305



**Cat 6A 4-Pair Solid Riser**  
Available in Plenum and Riser  
Part no. UTP4-C6A-SOLID-CMR-BL-305



**Cat 6A 4-Pair Shielded Riser**  
Available in Plenum and Riser  
Part no. FUTP4-C6A-SOLID-CMR-BL-305

\* Colours Available are:



CMR = PVC/RISER; CMP=PLENUM | 305=1000FT/ 305 METER