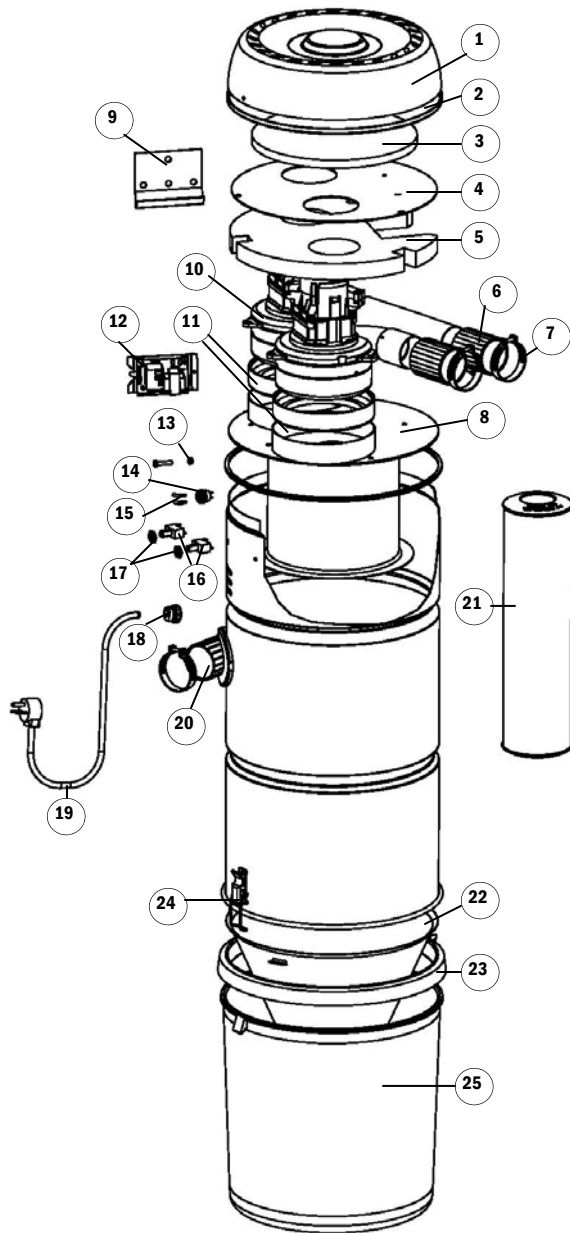


REPLACEMENT PARTS LIST



True Cyclonic Model 780

Part #7875-CE



Item#	Description (Qty.)	Part #	MSRP
1	Top Cover Assembly	7905	25.27
2	Edge Protector	7062-01	2.21
3	Acoustic Foam Ring	7882	N/A
4	Barrier Support Plate	7880	35.21
5	Acoustic Foam	7881	6.30
6	Coupling (2 required)	1209	1.60
7	Clamp (3 required)	5156	1.39
8	Motor Plate Assembly	7877	67.29
9	Wall Bracket	7318	1.90
10	Motor - Ametek #117796 (left or right)	7751-01	179.00
11	Gasket, Bottom Motor (2 required)	0046	7.90
12	Relay Assembly/PC Board	7417-CE	87.00
13	Nut 8-32	7108	0.36
14	Connector, 2-contact	7106-01	3.40
15	Terminal - 1/4 QC Flag (2 required)	7105	0.62
16	Circuit Protector (2 required)	7107-02	10.95
17	Nut, Nylon (2 required)	7693	0.27
18	Bushing - Strain Relief	2478-05	3.63
19	Cord, Power Supply - 30AMP 120v	8464	14.13
20	Flexible Inlet Fitting	7092	11.19
21	Muffler (2 required)	8080	9.69
22	Cone, Plastic	3708	25.88
23	Gasket (seals shell to dirt receptacle)	4775-06	6.81
24	Wire Loop (2 required)	4835	2.69
25	Clear Dirt Receptacle	6988-02	35.00

When ordering, please specify model, serial number (located on side of unit), and color of part when applicable. Manufacturer recommends the use of mufflers with all VACUFLO units.

08/2011