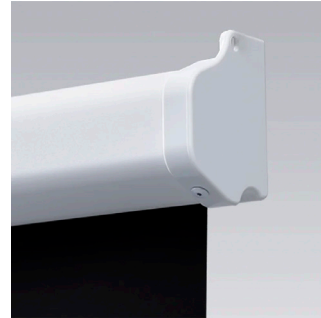
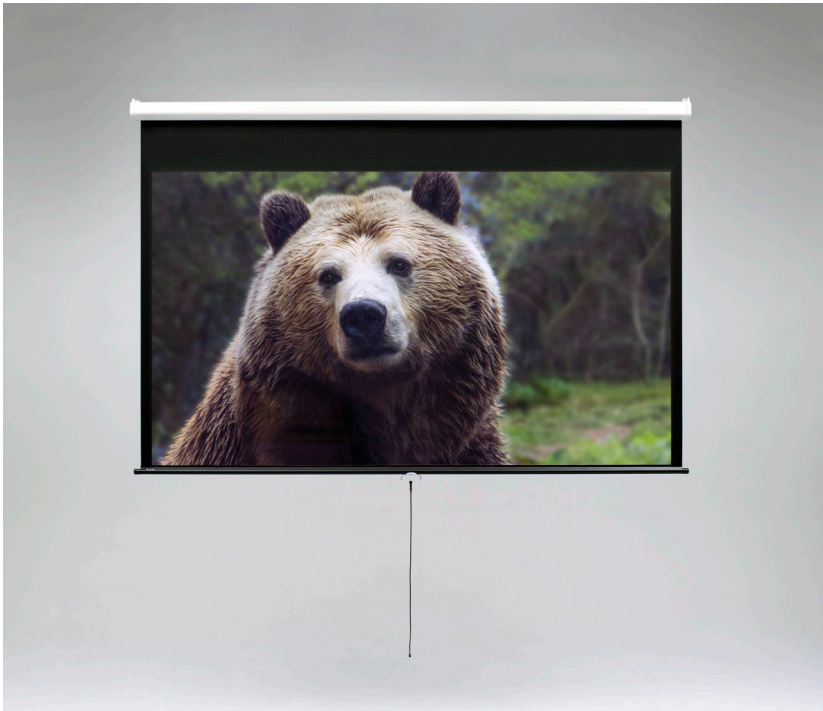


# MANUAL LUMA

CEILING- OR WALL-MOUNTED, FREE-HANGING



Spring-roller screens offer simplicity of operation, with no wiring set-up or cost. Free-hanging, fiberglass-backed projection screens maintain flatness thanks to the weight of the screen and bottom dowel.

- Recent market changes make Luma the most affordable manual projection screen with US-made quality and durability. Luma is perfect for classrooms, boardrooms, or small- to medium-sized business-related environments.

## FEATURES

- High-quality, spring-roller projection screen can be wall- or ceiling-mounted.
- Black drop may be standard, depending on screen size. Extra drop above image area available upon request.
- Pentagonal steel case with scratch resistant white polyester finish and matching endcaps.
- Endcaps form universal hanging brackets for attachment to wall or ceiling.
- Most affordable manual projection screen.
- USA quality and durability.

## WARRANTY

[draperinc.com/warranty.aspx](https://draperinc.com/warranty.aspx)

## OPTIONS

- Removable #5 black cotton braid pull cord standard. Optional operating pole available in lengths of 4' (122 cm) and 6' (183 cm).
- Viewing Surfaces:** OptiView™ (self-supporting) family.

## SUPPORTING DOCUMENTS

All instructions, technical drawings and other supporting documents are located at: [draperinc.com/documents.aspx](https://draperinc.com/documents.aspx)

## SIZES

- Case dimensions are 3 3/4" high x 3 1/4" deep (10 cm x 8 cm).
- Maximum image width up to 96" (244 cm) wide.
- 16:10 FORMAT: 67" (170 cm) to 109" (277 cm) diagonal.
- 16:9 FORMAT: 65" (165 cm) to 106" (269 cm) diagonal.
- 4:3 FORMAT: 72" (183 cm) 120" (305 cm) diagonal.
- AV FORMAT: from 50" x 50" (127 cm x 127 cm) to 96" x 96" (244 cm x 244 cm) viewing area.
- Custom sizes available.

For more information on this product visit: [draperinc.com/projectionscreens/manualscreens.aspx](https://draperinc.com/projectionscreens/manualscreens.aspx)