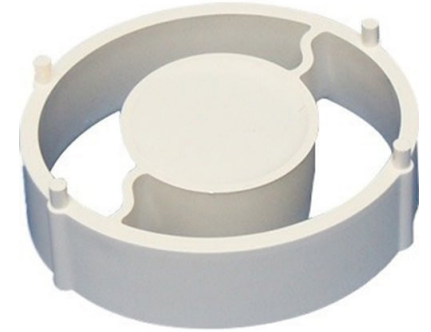


MAGNETIC CONTACT

HIGH IMPACT, DOOR CHANNEL

ADI
PRO

The 0E-STLDRMAG is a crush resistant, door channel magnetic contact designed for indoor, commercial and residential applications. It is easy to install, with a metal door mount and 12" wire leads.



0E-STLDRMAG

FEATURES

Easy installation with metal door mount

Rare earth magnet

12-22 AWG wire range for terminals

Heavy impact construction for durability and consistent performance

1-Year Warranty

Product Specifications

PART #: 0E-STLDRMAG
UPC: 811914026259

Reed Form: N/O
Loop Type: Closed loop

Max. Contact Rating: 30VDC, 0.2A, 5W
Max. Initial Contact Resistance: 0.150 Ω

Closed Gap: 0.75" (19mm)
Departure Gap: 0.82" (21mm)

Wire Range for Terminals: 12-22 AWG

Diameter: 0.75" (19mm)

Package Quantity: 10

For more information contact your ADI Sales person or visit adiglobal.com/adiexclusivebrands

