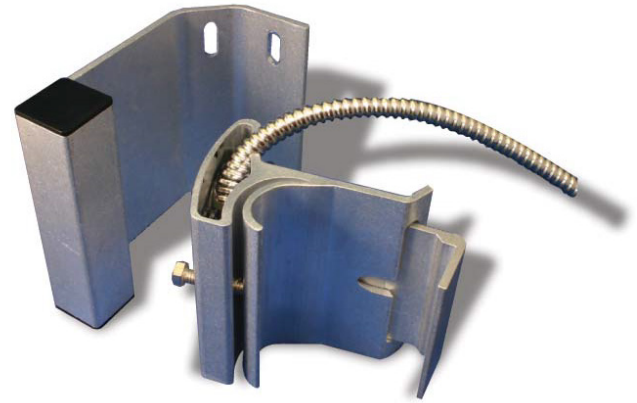


MAGNETIC CONTACT

HIGH IMPACT, TRACK MOUNT

ADI
PRO

The 0E-DC4811 is a crush resistant track mount magnetic contact designed for commercial and residential applications. It mounts easily to roller tracks up to 3" and boasts heavy duty aluminum housing with vandal resistant construction.



0E-DC4811

FEATURES

Easy installation track mount

Fits all roller tracks up to 3"

27" (68.6cm) armored leads

Heavy duty, vandal resistant construction for durability and consistent performance

1-Year Warranty

Product Specifications

PART #: 0E-DC4811
UPC: 811914023470

Reed Form: N/O
Loop Type: Closed loop

Max. Contact Rating: 30VDC, 0.2A, 5W
Max. Initial Contact Resistance: 0.20 Ω

Closed Gap: 2.5" (65mm)
Departure Gap: 2.65" (67mm)

Wire Leads: 27" (68.6cm) armored cable

Magnet Dimensions (L x W x H):
3.5" x 1.7" x 3.2" (88.9 x 43.2 x 81.2mm)

Switch Dimensions (L x W x H):
2.6" x 1.8" x 3" (66 x 46 x 76.2mm)

For more information contact your ADI Sales person or visit adiglobal.com/adiexclusivebrands

