

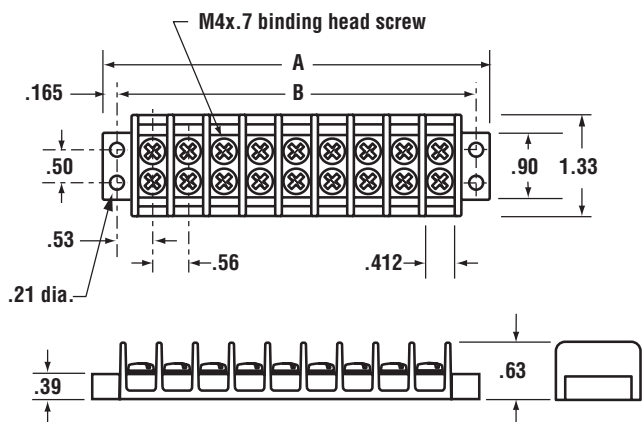
# TERMINAL STRIP SPECIFICATIONS

IDEAL® Terminal and Barrier Strips are designed and manufactured to be rugged, reliable and easy to use. A thermoplastic base and corrosion-resistant screws and hardware provide extended service life. Optional accessories provide convenient, versatile application. Available in a wide variety of circuit configurations, electrical ratings and center-spacing, there is an IDEAL® terminal strip for virtually every job.

- Heavy-duty, corrosion-resistant screws, surface plates and optional hardware
- Accessory hardware provides a variety of termination options
- Rugged polyester thermoplastic base (UL Rated 94V-0)
- Operating temperature rated from 115°C (230°F) to -40°C (-40°F)
- UL Recognized (E82048) for US and Canada

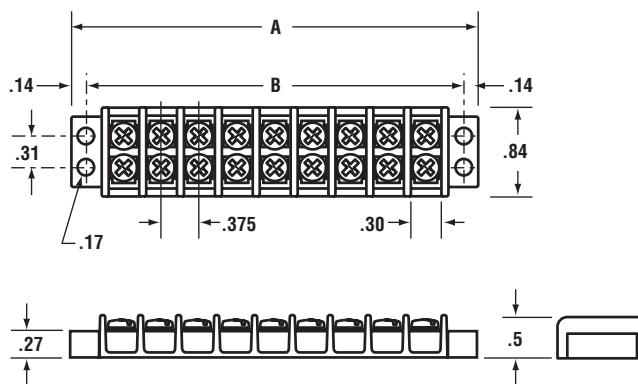
## 89-200 Series Terminal Strips

- .562 in. (14.28mm) center spacing
- Accepts wire sizes from 10 through 22 AWG Cu
- M4x.7 Philslot, nickel-plated steel terminal screws
- Recommended torque: 11 in. - lb.



## 89-300 Series Terminal Strips

- .375 in. (9.52mm) center spacing
- Accepts wire sizes from 14 through 22 AWG Cu
- M3.5x6 Philslot, nickel-plated steel terminal screws
- Recommended torque: 7.1 in. - lb.



| No. of Poles | Dimensions (Inches) |      | Part No.      |
|--------------|---------------------|------|---------------|
|              | A                   | B    |               |
| 2            | 2.13                | 1.69 | <b>89-202</b> |
| 3            | 2.69                | 2.25 | <b>89-203</b> |
| 4            | 3.25                | 2.81 | <b>89-204</b> |
| 6            | 4.37                | 3.94 | <b>89-206</b> |
| 8            | 5.50                | 5.06 | <b>89-208</b> |
| 10           | 6.62                | 6.19 | <b>89-210</b> |
| 12           | 7.75                | 7.31 | <b>89-212</b> |

Ratings: 30A/600V UL Listed and cUL.

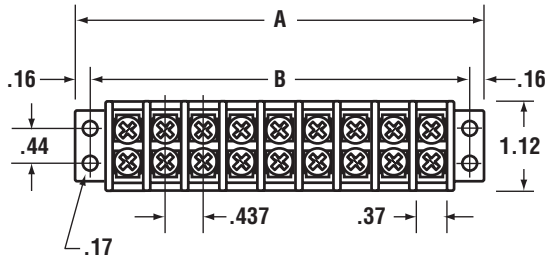
| No. of Poles | Dimensions (Inches) |      | Part No.      |
|--------------|---------------------|------|---------------|
|              | A                   | B    |               |
| 2            | 1.40                | 1.12 | <b>89-302</b> |
| 4            | 2.16                | 1.88 | <b>89-304</b> |
| 6            | 2.90                | 2.62 | <b>89-306</b> |
| 8            | 3.66                | 3.38 | <b>89-308</b> |
| 10           | 4.40                | 4.12 | <b>89-310</b> |
| 12           | 5.16                | 4.88 | <b>89-312</b> |

Ratings: 20A/300V UL Listed and cUL.

# TERMINAL STRIP SPECIFICATIONS

## 89-400 Series Terminal Strips

- .437 in. (11.10mm) center spacing
- Accepts wire sizes from 12 through 22 AWG Cu
- M3.5x6 Philslot, nickel-plated steel terminal screws
- Recommended torque: 7.1 in. - lb.

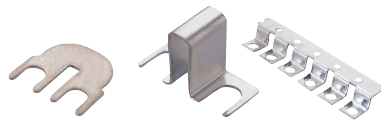


| No. of Poles | Dimensions (Inches) |      | Part No.      |
|--------------|---------------------|------|---------------|
|              | A                   | B    |               |
| 2            | 1.63                | 1.31 | <b>89-402</b> |
| 4            | 2.51                | 2.18 | <b>89-404</b> |
| 6            | 3.38                | 3.06 | <b>89-406</b> |
| 8            | 4.25                | 3.93 | <b>89-408</b> |
| 10           | 5.13                | 4.81 | <b>89-410</b> |
| 12           | 6.00                | 5.68 | <b>89-412</b> |

Ratings: 25A/300V UL Listed and cUL.

## Jumpers

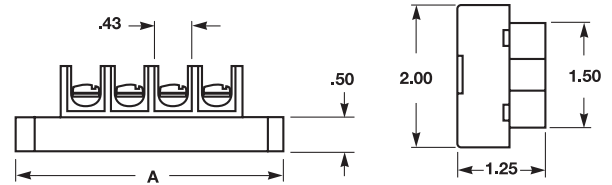
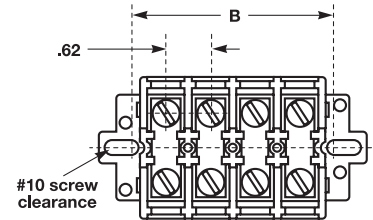
- Provides easy connection of multiple circuits



| For use w/ Terminal Strip Series | Center Spacing (in.) | Qty. | Flat Slip-on Part No. | Over Barrier Slip-on Part No. | Flat 12-Circuit Part No. |
|----------------------------------|----------------------|------|-----------------------|-------------------------------|--------------------------|
| 89-200                           | .562                 | 10   | <b>89-229</b>         | <b>89-224</b>                 | —                        |
|                                  |                      | 100  | <b>89-230</b>         | —                             | —                        |
| 89-300                           | .375                 | 10   | <b>89-323</b>         | <b>89-324</b>                 | —                        |
|                                  |                      | 100  | <b>89-330</b>         | —                             | —                        |
| 89-400                           | .437                 | 10   | <b>89-423</b>         | <b>89-424</b>                 | —                        |
|                                  |                      | 100  | <b>89-430</b>         | —                             | —                        |
| 89-500                           | .625                 | 2    | —                     | —                             | <b>89-525</b>            |

## 89-500 Series Terminal Strips

- Available in standard or shorting block styles
- .625 in. (15.88mm) center spacing
- Accepts wire sizes from 6 through 22 AWG Cu
- #10-32 Philslot, nickel-plated brass terminal screws
- Recommended torque: 20 in. - lb.

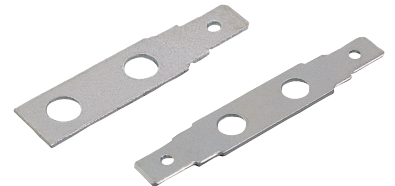


| No. of Poles | Dimensions (Inches) |      | Standard Block Part No. | Shorting Block Part No. |
|--------------|---------------------|------|-------------------------|-------------------------|
|              | A                   | B    |                         |                         |
| 4            | 3.75                | 2.87 | <b>89-504</b>           | <b>89-505</b>           |
| 6            | 5.00                | 4.12 | <b>89-506</b>           | <b>89-507</b>           |
| 8            | 6.25                | 5.37 | <b>89-508</b>           | <b>89-509</b>           |
| 12           | 8.75                | 7.87 | <b>89-512</b>           | <b>89-513</b>           |

Ratings: 60A/600V UL Listed, CSA Certified (Max. rating achieved with #6 AWG Cu wire crimped to ring terminals)

## Quick Connects

- Allows fast, flexible circuit changes



| For use w/ Terminal Strip Series | Tab Size (in.) | Qty. | Flat-None Part No. | Flat-Flat Part No. |
|----------------------------------|----------------|------|--------------------|--------------------|
| 89-300                           | .187 x .020    | 10   | <b>89-314</b>      | <b>89-317</b>      |
| 89-200 & 89-400                  | .250 x .031    | 10   | <b>89-414</b>      | <b>89-417</b>      |