

BEALE

STREET

---

AUDIO™

---



Get Reale. Get Beale.™

PRODUCT CATALOG

GET REALE.  
GET BEALE.

-COMMERCIAL



# TABLE OF CONTENTS

- In-Ceiling Speakers.....6
- In-Ceiling Dual Voice Coil Speaker .....8
- In-Ceiling Angled Speakers.....9
- Shallow Depth In-Ceiling Speakers .....10
- In-Ceiling/In-Wall Speakers .....11
- Home Theater Speakers .....12
- Subwoofers .....14
- Subwoofer Amplifiers.....16
- Residential Amplifiers .....17
- Commercial Speakers .....19
- Commercial Amplifiers.....23
- Beale Basics .....25
- Accessories .....29

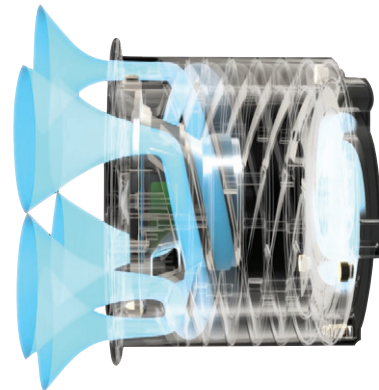
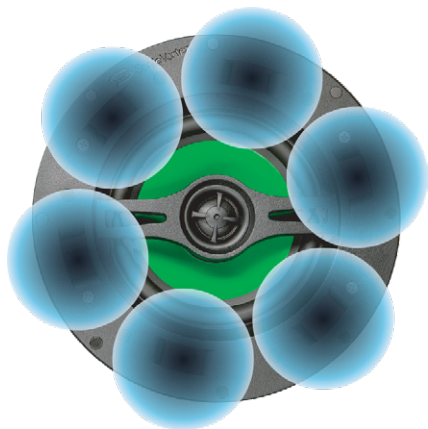
TABLE OF CONTENTS



RESIDENTIAL

# SOUND. REINVENTED.

Complex simplicity that took years to develop. Our patented Sonic Vortex<sup>®</sup> technology produces amazing bass and effortless clarity in an integrated enclosure. It is literally a “twist” on ported transmission line design, which optimizes air movement to provide astonishing sound in a compact speaker.

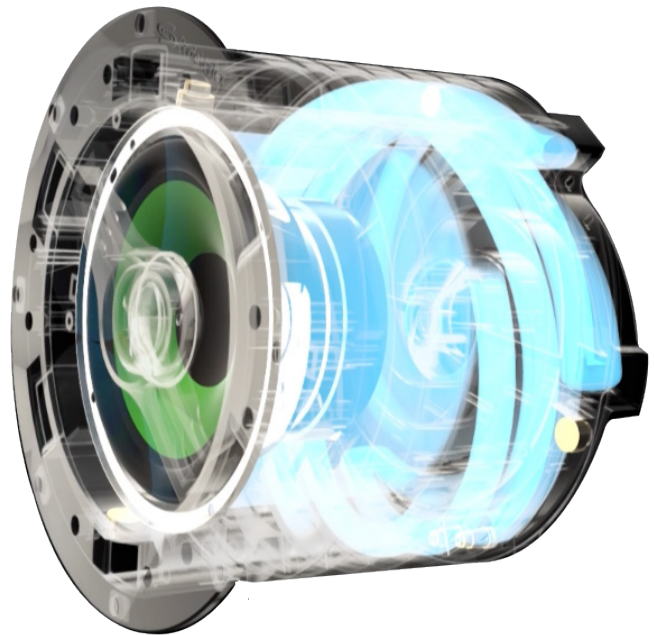


## WHY BEALE STREET AUDIO?

Does the world need another speaker? It does if it utilizes a technology that elevates the performance far above all others, while still being extremely competitive in price, and also easy to install.

## TECHNOLOGY

Powered by Sonic Vortex technology for deep, rich bass unlike anything you have heard in a small enclosure. Listen once and the story will tell itself.



## COMPONENTS, PERFORMANCE & QUALITY

For each model we carefully match the correct drivers, crossovers and other components to provide outstanding performance and the best value for the money. We combine the amazing Sonic Vortex powered bass, with clarity in the midrange and high frequencies, and provide smooth, even imaging as well.

Speaker companies have worked for decades to reduce the size of their cabinets while maintaining quality sound. Smaller cabinets have high consumer appeal and more flexible placement options. Unfortunately, to achieve high quality sound, physics tend to get in the way. Until now.

Put simply, Sonic Vortex® technology combines proven design methods with what would traditionally be a very long port and wraps it around the internal cavity of the enclosure. It equates to a “complex simplicity” that took years to develop. This produces bass that far exceeds what you would expect from a small cabinet. The main port is separated into multiple ports containing what we call fins. The fins can be designed and adjusted to maximize the sound in enclosures of various sizes and depths, even very shallow ones. This design also makes the cabinet more rigid for further acoustical reinforcement.

Another huge benefit to this design is that the cost to manufacture is about the same as a traditional enclosure. It does not require specially designed drivers although we choose and match the correct drivers for the application. Another feature that sets Sonic Vortex technology apart from others is that it can be scaled to be utilized in anything from an architectural speaker to almost any other application. This includes outdoor speakers, bookshelf, monitors, computer speakers, portable speakers and much more.



# IN-CEILING SPEAKERS

IN-CEILING SPEAKERS



## 6.5" IN-CEILING SPEAKER POLYPROPYLENE WOOFER, SILK DOME TWEETER

- Speaker Type – In-Ceiling 2-Way
- Woofer – 6.5" Poly
- Tweeter – 1" Silk Dome
- Frequency – 46 Hz – 22 kHz
- Sensitivity – 89db
- Butyl Rubber Surround
- Sonic Vortex® Ported Transmission Line
- Magnetic Bezelless Grille – White; paintable
- Impedance – 8Ω
- Connector Type – Gold Spring Push Terminal
- Depth – 6.8" (172mm)
- Speaker Weight – 7 lbs (3.18kg)
- Cutout – 8.4" (214mm)
- Diameter – 9.4" (239mm)
- Power Handling – 5-120W
- Pivoting Tweeter
- EZBracket Size – F

### PACKAGE CONTENTS

IC6-B 6.5" In-Ceiling Speaker  
Magnetic Grille  
Product Manual

PART NO.

IC6-B



## 6.5" IN-CEILING SPEAKER FLUTED INJECTED POLY WOOFER, ALUMINUM TWEETER

- Speaker Type – In-Ceiling 2-Way
- Woofer – 6.5" Fluted Injected Poly
- Tweeter – 1" Aluminum Dome
- Frequency – 43 Hz – 24 kHz
- Sensitivity – 89db
- Butyl Rubber Surround
- Sonic Vortex® Ported Transmission Line
- Magnetic Bezelless Grille – White; paintable
- Impedance – 8Ω
- Connector Type – Gold Spring Push Terminal
- Depth – 6.8" (172mm)
- Speaker Weight – 7.10 lbs (3.22kg)
- Cutout – 8.4" (214mm)
- Diameter – 9.4" (239mm)
- Power Handling – 5-120W
- Pivoting Tweeter
- EZBracket Size – F

### PACKAGE CONTENTS

IC6-MB 6.5" In-Ceiling Speaker  
Magnetic Grille  
Product Manual

PART NO.

IC6-MB



## 6.5" IN-CEILING SPEAKER CARBON FIBER WOOFER, TITANIUM TWEETER

- Speaker Type – In-Ceiling 2-Way
- Woofer – 6.5" Carbon Fiber
- Tweeter – 1" Titanium Dome
- Frequency – 40 Hz – 25 kHz
- Sensitivity – 89db
- Butyl Rubber Surround
- Sonic Vortex® Ported Transmission Line
- Magnetic Bezelless Grille – White; paintable
- Impedance – 8Ω
- Connector Type – Gold Spring Push Terminal
- Depth – 6.8" (172mm)
- Speaker Weight – 7.10 lbs (3.22kg)
- Cutout – 8.4" (214mm)
- Diameter – 9.4" (239mm)
- Power Handling – 5-120W
- Pivoting Tweeter
- EZBracket Size – F

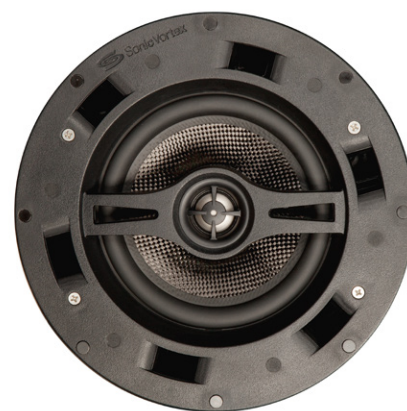
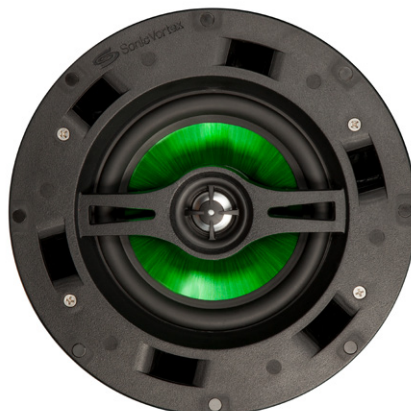
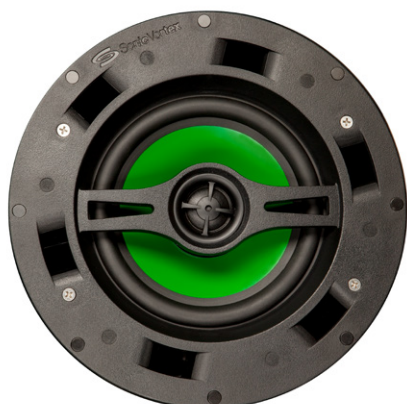
### PACKAGE CONTENTS

IC6-BB 6.5" In-Ceiling Speaker  
Magnetic Grille  
Product Manual

PART NO.

IC6-BB





## 8" IN-CEILING SPEAKER POLYPROPYLENE WOOFER, SILK DOME TWEETER

- Speaker Type – In Ceiling 2-Way
- Woofer – 8" Poly
- Tweeter – 1" Silk Dome
- Frequency – 38 Hz – 22 kHz
- Sensitivity – 92db
- Butyl Rubber Surround
- Sonic Vortex® Ported Transmission Line
- Magnetic Bezelless Grille – White; paintable
- Impedance – 8Ω
- Connector Type – Gold Spring Push Terminal
- Depth – 8.6" (219.5mm)
- Speaker Weight – 8.38 lbs (3.8kg)
- Cutout – 10.3" (261.5mm)
- Diameter – 11.3" (284mm)
- Power Handling – 5-120W
- Pivoting Tweeter
- EZBracket Size – B

### PACKAGE CONTENTS

IC8-B 6.5" In-Ceiling Speaker  
Magnetic Grille  
Product Manual

**PART NO.**

IC8-B



## 8" IN-CEILING SPEAKER FLUTED INJECTED POLY WOOFER, ALUMINUM TWEETER

- Speaker Type – In-Ceiling 2-Way
- Woofer – 8" Fluted Injected Poly
- Tweeter – 1" Aluminum Dome
- Frequency – 35 Hz – 24 kHz
- Sensitivity – 92db
- Butyl Rubber Surround
- Sonic Vortex® Ported Transmission Line
- Magnetic Bezelless Grille – White; paintable
- Impedance – 8Ω
- Connector Type – Gold Spring Push Terminal
- Depth – 8.6" (219.5mm)
- Speaker Weight – 8.38 lbs (3.8kg)
- Cutout – 10.3" (261.5mm)
- Diameter – 11.3" (284mm)
- Power Handling – 5-120W
- Pivoting Tweeter
- EZBracket Size – B

### PACKAGE CONTENTS

IC8-MB 6.5" In-Ceiling Speaker  
Magnetic Grille  
Product Manual

**PART NO.**

IC8-MB



## 8" IN-CEILING SPEAKER CARBON FIBER WOOFER, TITANIUM TWEETER

- Speaker Type – In-Ceiling 2-Way
- Woofer – 8" Carbon Fiber
- Tweeter – 1" Titanium Dome
- Frequency – 32 Hz – 25 kHz
- Sensitivity – 92db
- Butyl Rubber Surround
- Sonic Vortex® Ported Transmission Line
- Magnetic Bezelless Grille – White; paintable
- Impedance – 8Ω
- Connector Type – Gold Spring Push Terminal
- Depth – 8.6" (219.5mm)
- Speaker Weight – 8.38 lbs (3.8kg)
- Cutout – 10.3" (261.5mm)
- Diameter – 11.3" (284mm)
- Power Handling – 5-120W
- Pivoting Tweeter
- EZBracket Size – B

### PACKAGE CONTENTS

IC8-BB 6.5" In-Ceiling Speaker  
Magnetic Grille  
Product Manual

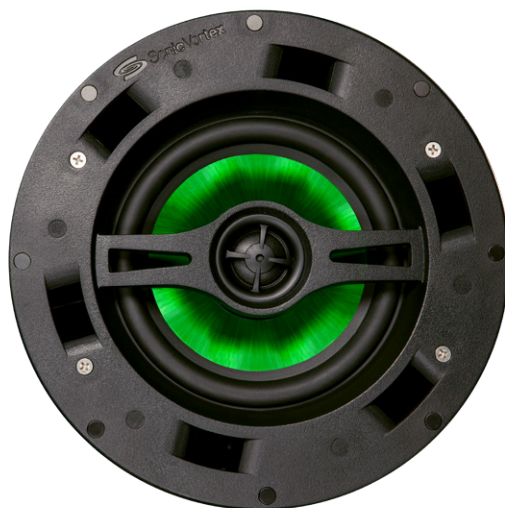
**PART NO.**

IC8-BB



# IN-CEILING DUAL VOICE COIL SPEAKER

IN-CEILING DUAL VOICE COIL SPEAKER



## 6.5" IN-CEILING DUAL VOICE COIL SPEAKER POLYPROPYLENE WOOFER, SILK DOME TWEETER

- Speaker Type – In-Ceiling Dual Voice Coil
- Woofer – 6.5" Poly
- Tweeter – 1" Silk Dome Dual Voice Coil
- Frequency – 46 Hz – 22 kHz
- Sensitivity – 89db
- Butyl Rubber Surround
- Sonic Vortex® Ported Transmission Line
- Magnetic Bezelless Grille – White; paintable
- Impedance – 8Ω
- Connector Type – 4 Pin Terminal
- Depth – 6.8" (172mm)
- Speaker Weight – 7 lbs (3.18kg)
- Cutout – 8.4" (214mm)
- Diameter – 9.4" (239mm)
- Power Handling – 5-90W
- Pivoting Tweeter
- EZBracket Size – F

### PACKAGE CONTENTS

IC6DVC-B 6.5" Dual Voice  
Coil Speaker  
Magnetic Grille  
Product Manual

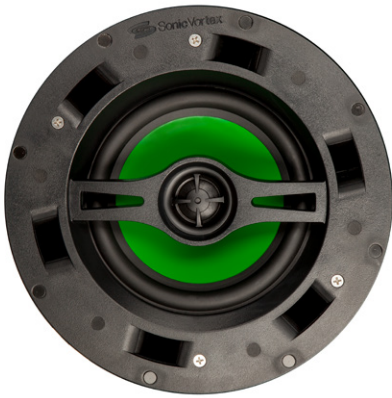
PART NO.

IC6DVC-B





# IN-CEILING ANGLED SPEAKERS



## 6.5" IN-CEILING ANGLED SPEAKER POLYPROPYLENE WOOFER, SILK DOME TWEETER

- Speaker Type – Angled In-Ceiling 2-Way
- Woofer – 6.5" Poly
- Tweeter – 1" Silk Dome
- Frequency – 46 Hz – 22 kHz
- Sensitivity – 89db
- Butyl Rubber Surround
- Sonic Vortex® Ported Transmission Line
- Magnetic Bezelless Grille – White; paintable
- Impedance – 8Ω
- Connector Type – Gold Spring Push Terminal
- Depth – 6.8" (172mm)
- 15 Degree Angled Woofer
- Speaker Weight – 6.97 lbs (3.16kg)
- Cutout – 8.4" (214mm)
- Diameter – 9.4" (239mm)
- Power Handling – 5-120W
- Pivoting Tweeter
- EZBracket Size - F

## 6.5" IN-CEILING ANGLED SPEAKER FLUTED INJECTED POLY WOOFER, ALUMINUM TWEETER

- Speaker Type – Angled In-Ceiling 2-Way
- Woofer – 6.5" Fluted Injected Poly
- Tweeter – 1" Aluminum Dome
- Frequency – 43 Hz – 24 kHz
- Sensitivity – 89db
- Butyl Rubber Surround
- Sonic Vortex® Ported Transmission Line
- Magnetic Bezelless Grille – White; paintable
- Impedance – 8Ω
- Connector Type – Gold Spring Push Terminal
- Depth – 6.8" (172mm)
- 15 Degree Angled Woofer
- Speaker Weight – 6.97 lbs (3.16kg)
- Cutout – 8.4" (214mm)
- Diameter – 9.4" (239mm)
- Power Handling – 5-120W
- Pivoting Tweeter
- EZBracket Size – F

## 6.5" IN-CEILING ANGLED SPEAKER CARBON FIBER WOOFER, TITANIUM TWEETER

- Speaker Type – Angled In-Ceiling 2-Way
- Woofer – 6.5" Carbon Fiber
- Tweeter – 1" Titanium Dome
- Frequency – 40 Hz – 25 kHz
- Sensitivity – 89db
- Butyl Rubber Surround
- Sonic Vortex® Ported Transmission Line
- Magnetic Bezelless Grille – White; paintable
- Impedance – 8Ω
- Connector Type – Gold Spring Push Terminal
- Depth – 6.8" (172mm)
- 15 Degree Angled Woofer
- Speaker Weight – 6.97 lbs (3.16kg)
- Cutout – 8.4" (214mm)
- Diameter – 9.4" (239mm)
- Power Handling – 5-120W
- Pivoting Tweeter
- EZBracket Size – F

IN-CEILING ANGLED SPEAKERS

### PACKAGE CONTENTS

ICA6-B 6.5" In-Ceiling Speaker  
Magnetic Grille  
Product Manual

**PART NO.**

ICA6-B



### PACKAGE CONTENTS

ICA6-MB 6.5" In-Ceiling Speaker  
Magnetic Grille  
Product Manual

**PART NO.**

ICA6-MB



### PACKAGE CONTENTS

ICA6-BB 6.5" In-Ceiling Speaker  
Magnetic Grille  
Product Manual

**PART NO.**

ICA6-BB



INDICATES SPEAKERS POWERED BY SONIC VORTEX TECHNOLOGY

# SHALLOW DEPTH IN-CEILING SPEAKERS



## PACKAGE CONTENTS

P4-MB 4" Shallow Depth  
In-Ceiling Speaker  
Magnetic Grille  
Product Manual

PART NO.

P4-MB



## 4" SHALLOW DEPTH IN-CEILING SPEAKER - POLYPROPYLENE WOOFER

- Speaker Type – In-Ceiling/In-Wall 2-Way
- Woofer – 4" Fluted Injected Poly
- Tweeter – 3/4" Aluminum Dome
- Frequency – 62 Hz – 24 kHz
- Sensitivity – 88db
- Butyl Rubber Surround
- Sonic Vortex Ported Transmission Line
- Magnetic Bezelless Grille – White; paintable
- Impedance – 8Ω
- Connector Type – Gold Spring Push Terminal
- Depth – Ultra Shallow 2.76" (70.2mm)
- Speaker Weight – 2.62 lbs (1.19kg)
- Cutout – 8.4" (214mm)
- Diameter – 9.5" (241.4mm)
- Frequency/Crossover Setting – Full range only
- Power Handling – 5-80W
- EZBracket Size – F



## PACKAGE CONTENTS

P4-BB 4" Shallow Depth  
In-Ceiling Speaker  
Magnetic Grille  
Product Manual

PART NO.

P4-BB

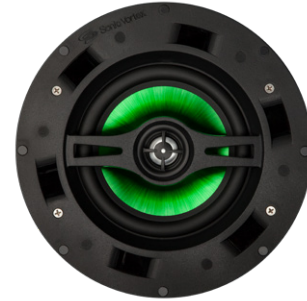


## 4" SHALLOW DEPTH IN-CEILING SPEAKER - CARBON FIBER WOOFER

- Speaker Type – In-Ceiling/In-Wall 2-Way
- Woofer – 4" Carbon Fiber
- Tweeter – 3/4" Titanium Dome
- Frequency – 59 Hz – 25 kHz
- Sensitivity – 88db
- Butyl Rubber Surround
- Sonic Vortex® Ported Transmission Line
- Magnetic Bezelless Grille – White; paintable
- Impedance – 8Ω
- Connector Type – Gold Spring Push Terminal
- Depth – Ultra Shallow 2.76" (70.2mm)
- Speaker Weight – 2.62 lbs (1.19kg)
- Cutout – 8.4" (214mm)
- Diameter – 9.5" (241.4mm)
- Frequency/Crossover Setting – Full range only
- Power Handling – 5-80W
- EZBracket Size – F

## 4" IN-CEILING/IN-WALL SPEAKER

- Speaker Type – In-Wall or In-Ceiling 2-Way
- Woofer – 4" Fluted Injected Poly
- Tweeter – 3/4" Aluminum Dome
- Frequency – 68 Hz – 24 kHz
- Sensitivity – 89db
- Butyl Rubber Surround
- Sonic Vortex® Ported Transmission Line
- Magnetic Bezelless Grille – White; paintable
- Includes Both Round and Square Grills
- Impedance – 8Ω
- Connector Type – Gold Spring Push Terminal
- Pivoting Tweeter
- Speaker Weight – 3.9 lbs (1.75kg)
- Cutout – 6.4" (162mm)
- Diameter – 7.4" (186mm)
- Depth – 3.8" (97mm)
- Power Handling – 5-80W
- EZBracket Size – J



### PACKAGE CONTENTS

ICW4-MB 4" In-Ceiling/  
In-Wall Speaker

Magnetic Grille (Round  
and Square)

Product Manual

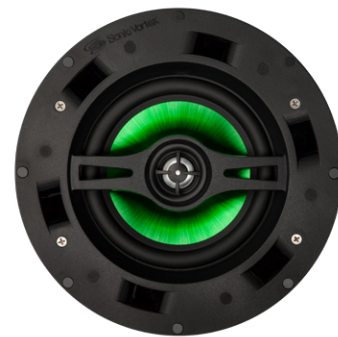
**PART NO.**

ICW4-MB



## 6.5" IN-CEILING/IN-WALL SPEAKER

- Speaker Type – In-Wall or In-Ceiling 2-Way
- Woofer – 6.5" Fluted Injected Poly
- Tweeter – 1" Aluminum Dome
- Frequency – 56 Hz – 24 kHz
- Sensitivity – 89db
- Butyl Rubber Surround
- Sonic Vortex® Ported Transmission Line
- Magnetic Bezelless Grille – White; paintable
- Includes Both Round and Square Grills
- Impedance – 8Ω
- Connector Type – Gold Spring Push Terminal
- Speaker Weight – 5 lbs (2.28kg)
- Cutout – 8.4" (214mm)
- Diameter – 9.4" (239mm)
- Depth – 3.9" (98mm)
- Power Handling – 5-120W
- EZBracket Size – F



### PACKAGE CONTENTS

ICW6-MB 6.5" In-Ceiling/  
In-Wall Speaker

Magnetic Grille (Round  
and Square)

Product Manual

**PART NO.**

ICW6-MB



# HOME THEATER SPEAKERS



## PACKAGE CONTENTS

IWLCR4-MB 4" Dual  
LCR Speaker  
Product Manual

PART NO.

IWLCR4-MB



## DUAL 4" LCR 2-WAY IN-WALL SPEAKER - POLYPROPYLENE WOOFER

- Speaker Type - In-Wall 2-Way
- Woofer: Dual 4" Green Ribbed Injected Polypropylene
- 1" Aluminum Dome Tweeter
- Butyl Rubber Surround
- Sonic Vortex® Ported Transmission Line
- Magnetic Bezelless Grille; White – Paintable
- Nominal Impedance: 6Ω
- Installed Frequency Response: 89Hz to 24KHz
- Sensitivity: 92db
- Gold Spring Push Terminal Connector
- Depth: 3.9" (100mm)
- Speaker Weight: 8.55lbs (3.87kg)
- Dimensions: 15.03" x 9.37" x 3.8" (382 x 238 x 97 mm)
- Cutout: 13.98" x 8.33" 355 x 211.5mm
- Grille Size: 9.35" x 15.02" (237.5 x 381.5mm)
- Power Handling: 5-120W



## PACKAGE CONTENTS

IWLCR4-BB 4" Dual  
LCR Speaker  
Magnetic Grille  
Product Manual

PART NO.

IWLCR4-BB



## DUAL 4" LCR 2-WAY IN-WALL SPEAKER - CARBON FIBER WOOFER

- Speaker Type - In-Wall 2-Way
- Woofer: Dual 4" Carbon Fiber
- 1" Titanium Tweeter
- Butyl Rubber Surround
- Sonic Vortex® Ported Transmission Line
- Magnetic Bezelless Grille; White – Paintable
- Nominal Impedance: 6Ω
- Installed Frequency Response: 86Hz to 25KHz
- Sensitivity: 92db
- Gold Spring Push Terminal Connector
- Depth: 3.9" 100mm
- Speaker Weight: 8.55lbs (3.87kg)
- Dimensions: 15.03" x 9.37" x 3.8" (382 x 238 x 97 mm)
- Cutout: 13.98" x 8.33" (355 x 211.5mm)
- Grille Size: 9.35" x 15.02" (237.5 x 381.5mm)
- Power Handling: 5-120W

## DUAL 4" PANCAKE SPEAKER - POLYPROPYLENE WOOFER

- Speaker Type – In-Wall 2-Way
- Woofer – Dual 4" Fluted Injected Poly
- Tweeter – 1" Aluminum Dome
- Frequency – 62 Hz – 24 kHz
- Sensitivity – 92db
- Butyl Rubber Surround
- Sonic Vortex® Ported Transmission Line
- Magnetic Bezelless Grille – White; paintable
- Impedance – 6Ω
- Connector Type – Gold Spring Push Terminal
- Depth – 2.82" (71.5mm)
- Speaker Weight – 6 lbs (2.72kg)
- Cutout – 18.31" H x 8.74" (465mm x 222mm)
- Grille Dimensions – 19.62" H x 10.06" W (498mm x 255.4mm)
- Power Handling – 5-120W



### PACKAGE CONTENTS

IPLCR4-MB 4" Dual  
Pancake Speaker  
Magnetic Grille  
Product Manual

PART NO.

IPLCR4-MB



## DUAL 4" PANCAKE SPEAKER - CARBON FIBER WOOFER

- Speaker Type – In-Wall 2-Way
- Woofer – Dual 4" Carbon Fiber
- Tweeter – 1" Titanium Dome
- Frequency – 59 Hz – 25 kHz
- Sensitivity – 92db
- Butyl Rubber Surround
- Sonic Vortex® Ported Transmission Line
- Magnetic Bezelless Grille – White; paintable
- Impedance – 6Ω
- Connector Type – Gold Spring Push Terminal
- Depth – 2.82" (71.5mm)
- Speaker Weight – 5.95 lbs (2.7kg)
- Cutout – 18.31" H x 8.74" W (465mm x 222mm)
- Grille Dimensions – 19.62" H x 10.06" W (498.4mm x 255.4mm)
- Power Handling – 5-120W



### PACKAGE CONTENTS

IPLCR4-BB 4" Dual  
Pancake Speaker  
Magnetic Grille  
Product Manual

PART NO.

IPLCR4-BB



# SUBWOOFERS



## PACKAGE CONTENTS

BPS-65 Subwoofer  
Black Cloth Grille  
AC Power Cord  
Product Manual

**PART NO.**

BPS-65



## 6.5" IN-ROOM SUBWOOFER

- Front firing in-room subwoofer
- Engineered black matte wood cabinet
- Black cloth magnetic grill
- 200W built-in amplifier
- Kevlar woofer with butyl rubber surround
- Frequency – 38 Hz – 300 Hz
- Stereo or mono audio line level input (RCA)
- Stereo speaker level input and pass through
- Adjustable subwoofer crossover frequency
- Adjustable phase (0° or 180°)
- 110/220V
- Dimensions: 11.54" L x 11.65" W x 12.4" H



## PACKAGE CONTENTS

BPS-80 Subwoofer  
Black Cloth Grille  
AC Power Cord  
Product Manual

**PART NO.**

BPS-80



## 8" IN-ROOM SUBWOOFER

- Front firing in-room subwoofer
- Engineered black matte wood cabinet
- Black cloth magnetic grill
- 200W built-in amplifier
- Kevlar woofer with butyl rubber surround
- Frequency – 28 Hz – 300 Hz
- Stereo or mono audio line level input (RCA)
- Stereo speaker level input and pass through
- Adjustable subwoofer crossover frequency
- Adjustable phase (0° or 180°)
- 110/220V
- Dimensions: 13.5" L x 13.5" W x 14.25" H

## 6.5" IN-CEILING SUBWOOFER

- Speaker Type – In-Ceiling Subwoofer
- Woofer – 6.5" Kevlar
- Tweeter – N/A
- Frequency – 38 Hz – 300 kHz
- Sensitivity – 90db
- Butyl Rubber Surround
- Sonic Vortex® Ported Transmission Line
- Magnetic Bezelless Grille – White; paintable
- Impedance – 4Ω
- Connector Type – Gold Spring Push Terminal
- Depth – 6.8" (172mm)
- Speaker Weight – 7.10 lbs (3.22kg)
- Cutout – 8.4" (214mm)
- Diameter – 9.4" (239mm)
- Power Handling – 5-120W
- EZBracket Size – F



### PACKAGE CONTENTS

ICS6-MB 6.5" Subwoofer  
Magnetic Grille  
Product Manual

PART NO.

ICS6-MB



## 8" IN-CEILING SUBWOOFER

- Speaker Type – In-Ceiling Subwoofer
- Woofer – 8" Kevlar
- Tweeter – N/A
- Frequency – 28 Hz – 300 kHz
- Sensitivity – 90db
- Butyl Rubber Surround
- Sonic Vortex® Ported Transmission Line
- Magnetic Bezelless Grille – White; paintable
- Impedance – 4Ω
- Connector Type – Gold Spring Push Terminal
- Depth – 8.6" (219.5mm)
- Speaker Weight – 11.8 lbs (5.35kg)
- Cutout – 10.3" (261.5mm)
- Diameter – 11.3" (284mm)
- Power Handling – 5-240W
- EZBracket Size – B



### PACKAGE CONTENTS

ICS8-MB 8" Subwoofer  
Magnetic Grille  
Product Manual

PART NO.

ICS8-MB



# SUBWOOFER AMPLIFIERS



## PACKAGE CONTENTS

A120 Subwoofer Amplifier  
Product Manual

PART NO.

A120

## 1X120W SUBWOOFER AMPLIFIER

- Amp Type – High Efficiency Class D
- Power – 120 watt @ 4ohm
- Variable Crossover – 40-160 Hz
- Maximum Output Power – 80W/8Ω; 120W/4Ω
- THD – <1%
- Frequency Response – 20Hz-160Hz +/-1dB
- Signal to Noise – 95dB
- Input Sensitivity – 200mV
- Phase – 0-180°
- Input – RCA
- Speaker Level Input/Output
- Trigger Input – +12VDC to +24VDC
- Line Voltage Power – 110-120/220-240 VAC
- Standby Power – 1.8W
- Maximum Power Consumption – 150W
- Dimensions – 5.7" W x 1.8" H x 5" D (143mm W x 45mm H x 125mm D)
- Overall Length – 5.9" (150mm) (including knobs/connectors)
- Weight – 1.75lbs (0.79kg)



## PACKAGE CONTENTS

A220 Subwoofer Amplifier  
Product Manual

PART NO.

A220

## 220W SUBWOOFER AMPLIFIER

- Amp Type – High Efficiency Class D
- Power – 220 watt @ 4ohm
- Variable Crossover – 40-160 Hz
- Maximum Output Power – 120W/8Ω; 220W/4Ω
- THD – <1%
- Frequency Response – 20Hz-160Hz +/-1dB
- Signal to Noise – 95dB
- Input Sensitivity – 2mV @50Hz
- Phase – 0-180°
- Input – RCA
- Speaker Level Input/Output
- Trigger Input – +12VDC to +24VDC
- Line Voltage Power – 110-120/220-240 VAC
- Standby Power – 1.8W
- Maximum Power Consumption – 280W
- Dimensions – 8.4" W x 1.7" H x 9.8" D (214mm W x 44mm H x 250mm D)
- Weight – 2.9lbs (1.32kg)





## 50W, 2 CHANNEL AMPLIFIER

- Compact size...fits almost anywhere
- 50W per Channel at 8 Ohm, 160W bridged
- Anti-clipping Output Limiter
- Stereo, Mono/Bridge Modes
- Cool, efficient digital design
- Stereo Audio Line Level Input (RCA)
- Digital Optical Audio Input (Toslink and Coax)
- Line Level Subwoofer Output (RCA)
- Push-button IR Learning

### PACKAGE CONTENTS

BA251 Amplifier  
IR Extension Cable  
Remote  
Mounting Accessories  
AC Power Cable  
Product Manual

**PART NO.**

BA251



## 100W, 2 CHANNEL AMPLIFIER

- Compact size...fits almost anywhere
- 100W per Channel at 8 Ohm, 300W bridged
- Anti-clipping Output Limiter
- Stereo, Mono/Bridge Modes
- Cool, efficient digital design
- Stereo Audio Line Level Input (RCA)
- Digital Optical Audio Input (Toslink and Coax)
- Line Level Subwoofer Output (RCA)
- Push-button IR Learning

### PACKAGE CONTENTS

BA2101 Amplifier  
IR Extension Cable  
Remote  
Mounting Accessories  
AC Power Cable  
Product Manual

**PART NO.**

BA2101



# RESIDENTIAL AMPLIFIERS

RESIDENTIAL AMPLIFIERS

## 2X50W DIGITAL INTEGRATED AMPLIFIER

- 50W per Channel Class D Integrated Amplifier
- DSP, Crossovers, App Driver iOS/Android via Bluetooth DBT-Taylor (optional), IR learning
- Stereo Audio Line Level Input (RCA)
- Digital Optical Audio Input (Toslink)
- Line Level Subwoofer Output (RCA)



### PACKAGE CONTENTS

D2.1 Amplifier  
AC Power Cord  
Product Manual

PART NO.

D2.1

## PROGRAMMING MODULE

- Works with our Taylor App for configuration with the D2.1 amplifier that features an RJ45 Receiver IN jack. The App provides old-school, knob-turning in the form of a digital-age virtual setup
- Requires Bluetooth v4.0 or Better
- Works With Android Phones and Tablets and iOS Tablets
- App Settings Include: Volume, EQ, Subwoofer, Power Management and More
- DBT Can Also be Used for Bluetooth Audio Streaming
- Download App from Play Store (Android) or App Store (iOS) App Name: Taylor (Search Beale)



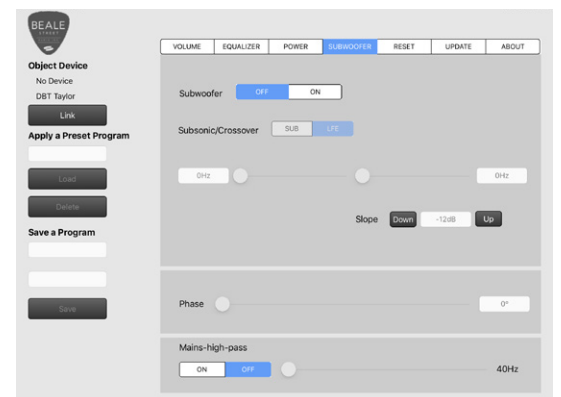
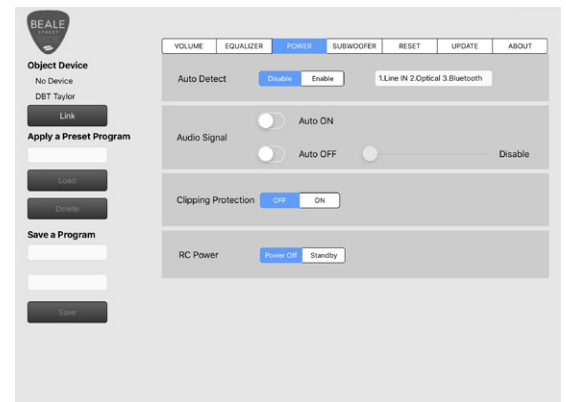
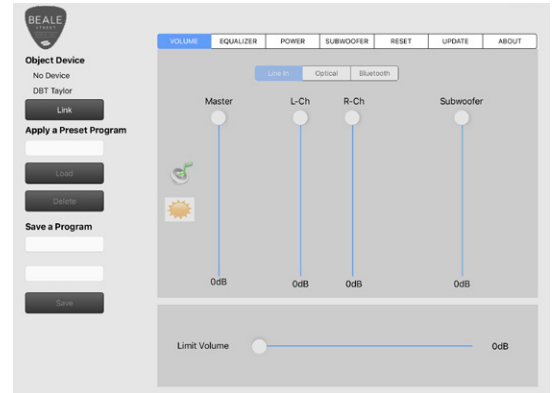
### PACKAGE CONTENTS

DBT-TAYLOR Programming Module  
Product Manual

PART NO.

DBT-TAYLOR

## CONTROL APP INTERFACE



## 4" 70/100V ULTRA SHALLOW SPEAKER

- Speaker Type – In-Ceiling/In-Wall 2-Way
- Woofer – 4" Fluted Injected Poly
- Tweeter – 3/4" Aluminum Dome
- Frequency – 62 Hz – 24 kHz
- Sensitivity – 88db
- Butyl Rubber Surround
- Sonic Vortex® Ported Transmission Line
- Magnetic Bezelless Grille – White; paintable
- Low Impedance – 8Ω
- 25V Taps – 0.2, 0.3, 0.5, 0.9, 1.8 Watts
- 70V Taps – 1, 1.9, 3.8, 7.5, 15 Watts
- 100V Taps – 1.9, 3.8, 7.5, 15 Watts
- Connector Type – Four position plug-in screw terminal
- Power Handling – In 8Ω Mode 5-80W
- Speaker Weight – 2.93 lbs (1.33kg)
- Cutout – 8.4" (162mm)
- Diameter – 9.5" (241.4mm)
- Depth – 2.76" (70.2mm)
- EZBracket Size – F
- Highlights – 25/70/100 Volt Switchable – Ultra Shallow Depth Pancake Less Than 3" (70mm)



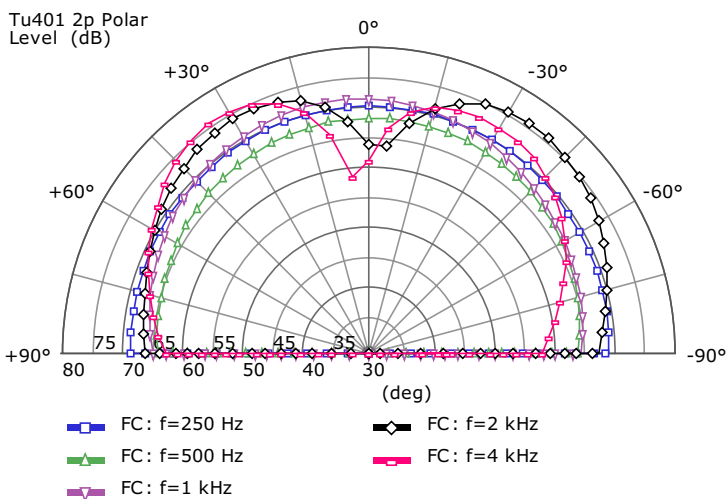
### PACKAGE CONTENTS

TU401 4" 70/100V Shallow  
Depth Speaker  
Magnetic Grille  
Product Manual

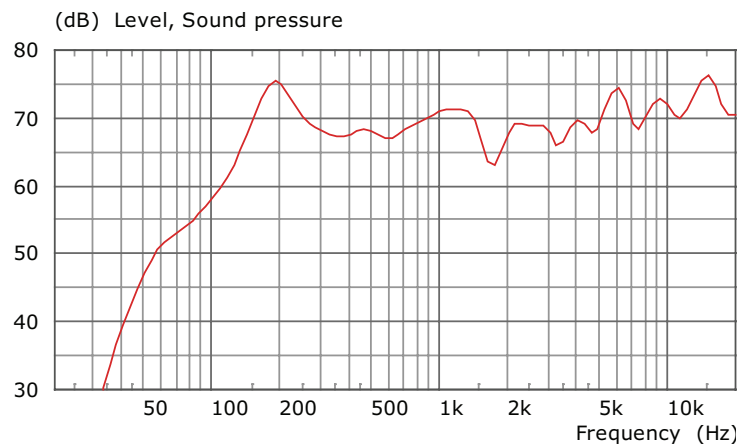
**PART NO.**  
TU401



70/100V COMMERCIAL SPEAKERS



**POLAR PATTERN**



**FREQUENCY RESPONSE**

# 70/100V COMMERCIAL SPEAKERS

70/100V COMMERCIAL SPEAKERS

## 4" 70/100V SPEAKER

- Speaker Type – In-Ceiling/In-Wall 2-Way
- Woofer – 4" Fluted Injected Poly
- Tweeter – 3/4" Aluminum Dome
- Frequency – 68 Hz – 24 kHz
- Sensitivity – 89db
- Butyl Rubber Surround
- Sonic Vortex® Ported Transmission Line
- Magnetic Bezelless Grille – White; paintable
- Low Impedance – 8Ω
- 25V Taps – 0.2, 0.3, 0.5, 0.9, 1.8 Watts
- 70V Taps – 1, 1.9, 3.8, 7.5, 15 Watts
- 100V Taps – 1.9, 3.8, 7.5, 15 Watts
- Connector Type – Four position plug-in screw terminal
- Power Handling – In 8Ω Mode 5-80W
- Speaker Weight – 2.59 lbs (1.175kg)
- Cutout – 6.4" (162mm)
- Diameter – 7.4" (186mm)
- Depth – 3.82" (97mm)
- Highlights – 25/70/100 Volt Switchable



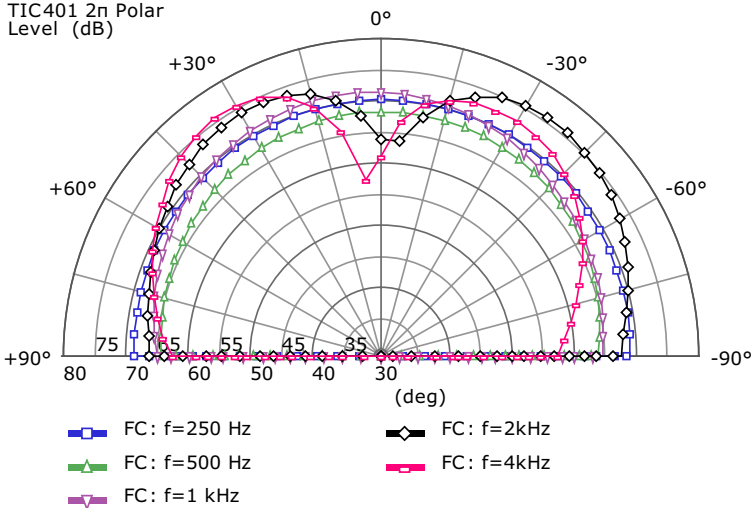
### PACKAGE CONTENTS

TICW401 4" 70/100V Speaker  
Magnetic Grille  
Product Manual

PART NO.  
TICW401

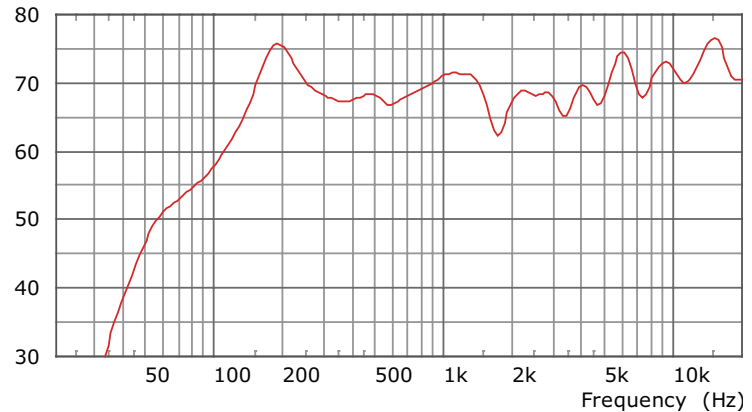


TIC401 2n Polar Level (dB)



POLAR PATTERN

(dB) Level, Sound pressure



FREQUENCY RESPONSE

## 6.5" 70/100V SPEAKER

- Speaker Type – In-Ceiling/In-Wall 2-Way
- Woofer – 6.5" Fluted Injected Poly
- Tweeter – 1" Aluminum Dome
- Frequency – 48 Hz – 24 kHz
- Sensitivity – 89db
- Butyl Rubber Surround
- Sonic Vortex® Ported Transmission Line
- Magnetic Bezelless Grille – White; paintable
- Low Impedance – 8Ω
- 25V Taps – 0.2, 0.4, 0.7, 1.3, 2.5 Watts
- 70V Taps – 1.3, 2.5, 5, 10, 20 Watts
- 100V Taps – 2.5, 5, 10, 20 Watts
- Power Handling – In 8Ω Mode – 5-120W
- Connector Type – Four position plug-in screw terminal
- Speaker Weight – 7.10 lbs (3.22kg)
- Cutout – 8.4" (214mm)
- Diameter – 9.4" (239mm)
- Depth – 6.8" (172mm)
- EZBracket Size – F
- Highlights – 25/70/100 Volt Switchable



### PACKAGE CONTENTS

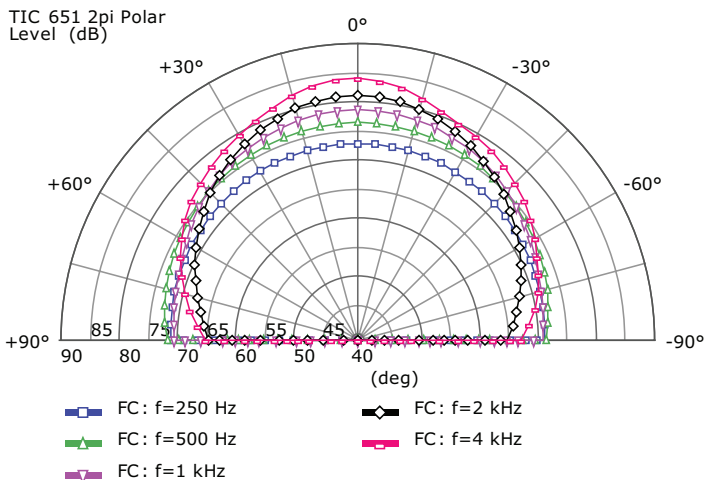
TIC651 6.5" 70/100V Speaker  
Magnetic Grille  
Product Manual

PART NO.

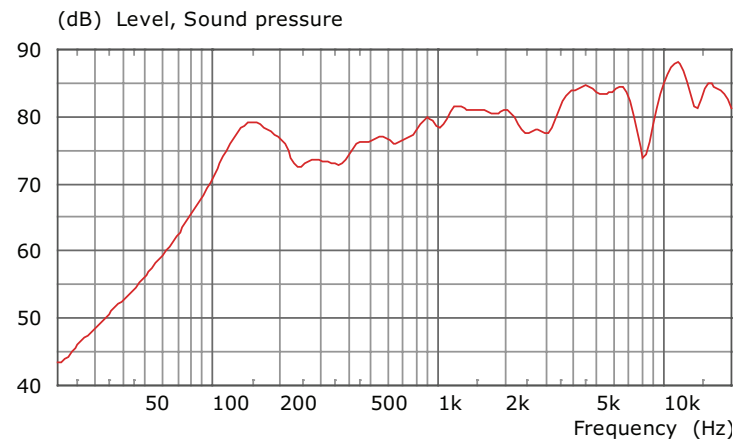
TIC651



70/100V COMMERCIAL SPEAKERS



**POLAR PATTERN**



**FREQUENCY RESPONSE**



# 70/100V COMMERCIAL SPEAKERS

## 8" 70/100V SPEAKER

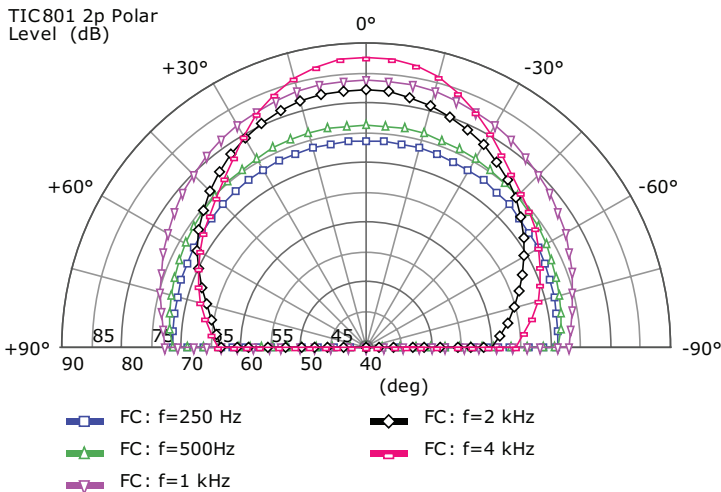
- Speaker Type – In-Ceiling/In-Wall 2-Way
- Woofer – 8" Fluted Injected Poly
- Tweeter – 1" Aluminum Dome
- Frequency – 35 Hz – 24 kHz
- Sensitivity – 92db
- Butyl Rubber Surround
- Sonic Vortex® Ported Transmission Line
- Magnetic Bezelless Grille – White; paintable
- Low Impedance – 8Ω
- 25V Taps – 0.3, 0.5, 0.9, 1.8, 3.5 Watts
- 70V Taps – 1.9, 3.8, 7.5, 15, 30 Watts
- 100V Taps – 3.8, 7.5, 15, 30 Watts
- Connector Type – Four position plug-in screw terminal
- Power Handling – In 8Ω Mode – 5-120W
- Speaker Weight – 8.38 lbs (3.8kg)
- Cutout – 10.3" (261.5mm)
- Diameter – 11.3" (284mm)
- Depth – 8.6" (219.5mm)
- EZBracket Size – B
- Highlights – 25/70/100 Volt Switchable



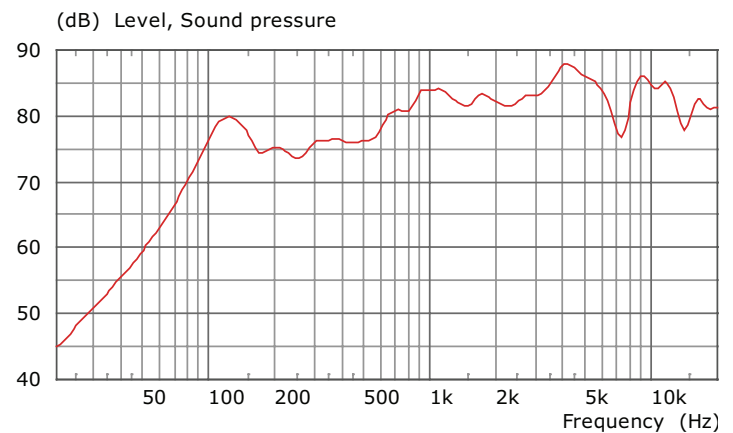
### PACKAGE CONTENTS

TIC801 8" 70/100V Speaker  
Magnetic Grille  
Product Manual

PART NO.  
TIC8101



**POLAR PATTERN**



**FREQUENCY RESPONSE**

## 1000W, 4 CHANNEL AMPLIFIER

- 250W per channel output @70V and 4 ohm (125W per channel @ 8 ohm)
- 4 balanced and unbalanced analog audio inputs
- 4 output channels
- Compatible with 4/8 ohm and 70/100V speakers and systems
- Controllable via front panel and IP
- Browser based GUI for easy setup and control
- Matrix mode allowing any source to be routed to any output channel
- Any source(s) can be mixed or individually selected to any output channel
- Digital Signal Processing (DSP) to completely customize audio performance and experience with bass, treble, notch, LPF and HPF
- Parametric Equalizer
- Rack Mountable with accessories included
- CE, FCC, ICES-3 Rated
- High efficiency, low noise universal power supply (100~240VAC, 50/60Hz)



### PACKAGE CONTENTS

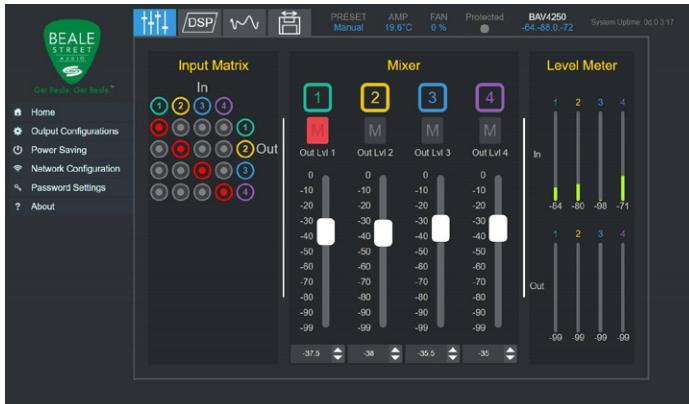
BAV4250 Amplifier  
 (4) 3-Pin Terminal  
 (4) 2-Pin Terminal  
 (2) Rack Mounting Brackets  
 (4) Mounting Bracket Screws  
 Power Cord  
 Product Manual

**PART NO.**

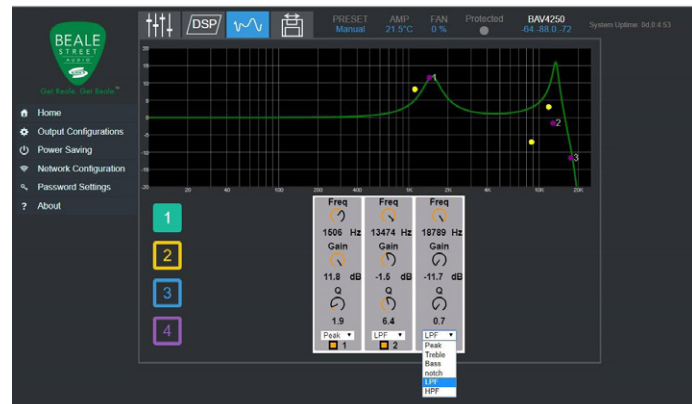
**BAV4250**

COMMERCIAL AMPLIFIERS

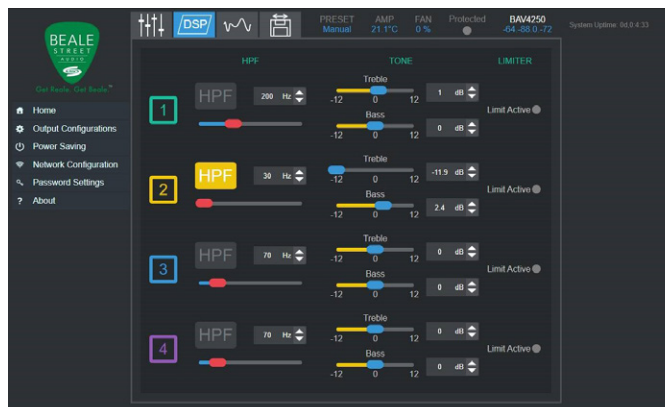
### INPUT AND VOLUME CONTROL



### PARAMETRIC EQUALIZER



### tone control



# COMMERCIAL AMPLIFIERS

## 1000W, 2 CHANNEL AMPLIFIER

- 500W per channel output @70V and 4 ohm (250W per channel @ 8 ohm)
- 2 balanced and unbalanced analog audio inputs
- 2 output channels
- Compatible with 4/8 ohm and 70/100V speakers and systems
- Controllable via front panel and IP
- Browser based GUI for easy setup and control
- Matrix mode allowing any source to be routed to any output channel
- Any source(s) can be mixed or individually selected to any output channel
- Digital Signal Processing (DSP) to completely customize audio performance and experience with bass, treble, notch, LPF and HPF
- Parametric Equalizer
- Rack Mountable with accessories included
- CE, FCC, ICES-3 Ratings
- High efficiency, low noise universal power supply (100~240VAC, 50/60Hz)



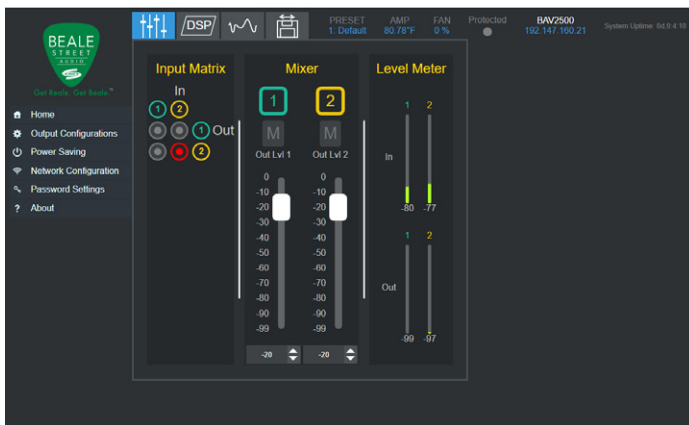
### PACKAGE CONTENTS

- BAV2500 Amplifier
- (2) 3-Pin Terminal
- (2) 2-Pin Terminal
- (2) Rack Mounting Brackets
- (4) Mounting Bracket Screws
- Power Cord
- Product Manual

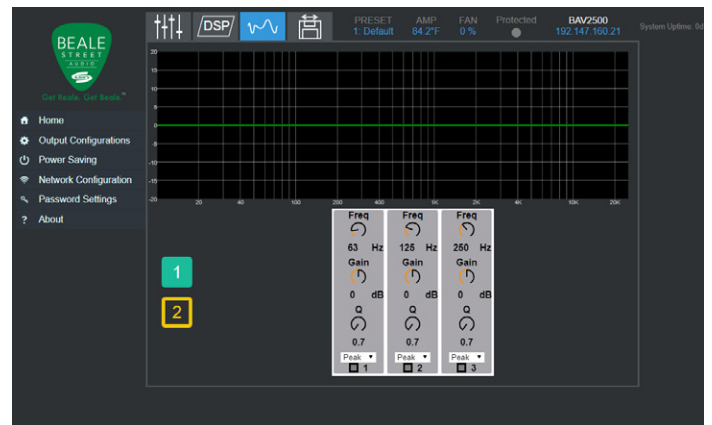
PART NO.

BAV2500

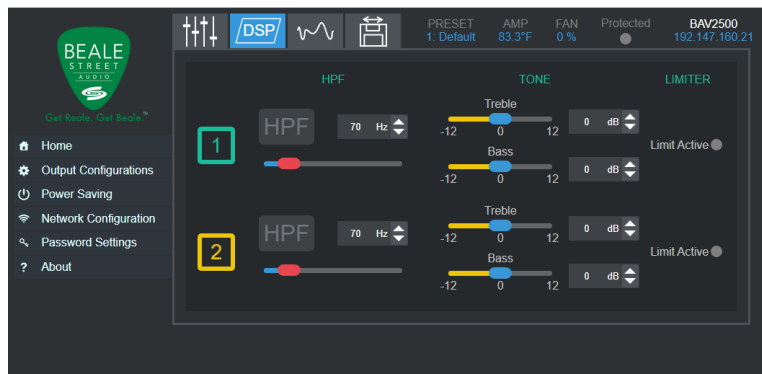
### INPUT AND VOLUME CONTROL



### PARAMETRIC EQUALIZER



### TONE CONTROL







## 6.5" IN-CEILING SPEAKER BEALE BASICS SERIES

- Woofer: 6.5" Kevlar Type Woven Cone
- Tweeter: 0.75" Pivoting Titanium Dome
- RMS Power: 60W
- Nominal Impedance: 8Ω
- Sensitivity: 90dB
- Installed Frequency Response: 60Hz- 20kHz
- Product Dimension: 227x87mm (9" x 3.4")
- Cutout Size: 210mm (8.3")

### PACKAGE CONTENTS

(2) IC6-BSC 6.5" In-Ceiling  
Speakers  
Magnetic Grille  
Product Manual

**PART NO.**

IC6-BSC



## 8" IN-CEILING SPEAKER BEALE BASICS SERIES

- Woofer: 8" Kevlar Type Woven Cone
- Tweeter: 0.75" Pivoting Titanium Dome
- RMS Power: 80W
- Nominal Impedance: 8Ω
- Sensitivity: 90dB
- Installed Frequency Response: 50Hz- 20kHz
- Product Dimension: 227x105mm (10.9" x 4.1")
- Cutout Size: 258mm (10.2")

### PACKAGE CONTENTS

(2) IC8-BSC 8" In-Ceiling  
Speakers  
Magnetic Grille  
Product Manual

**PART NO.**

IC8-BSC



# BEALE BASICS DUAL VOICE COIL SPEAKER

DUAL VOICE COIL SPEAKER



## 6.5" IN-CEILING DUAL VOICE COIL SPEAKER BEALE BASICS SERIES

- Woofer: 6.5" Kevlar Type Woven Cone
- Tweeter: Dual 0.75" Titanium Dome
- RMS Power: 60W
- Nominal Impedance: 8 $\Omega$
- Sensitivity: 90dB
- Installed Frequency Response: 55Hz- 20kHz
- Product Dimension: 227x87mm (9" x 3.4")
- Cutout Size: 210mm (8.3")
- Mounting Dept >94mm (>3.7")

### PACKAGE CONTENTS

IC6DT-BSC 6.5" In-Ceiling  
Dual Voice

Coil Speaker

Magnetic Grille

Product Manual

**PART NO.**

IC6DT-BSC



## PACKAGE CONTENTS

IC6V-BSC 6.5" In-Ceiling Speaker

Magnetic Grille

Product Manual

**PART NO.**

IC6V-BSC

## 6.5" IN-CEILING 70V SPEAKER BEALE BASICS SERIES

- Woofer: 6.5" Kevlar Type Woven Cone
- Tweeter: 0.75" Titanium Dome
- RMS Power: 60W
- Nominal Impedance: 8 $\Omega$
- Transformer: 10W-5W-2.5W
- Sensitivity: 90dB
- Installed Frequency Response: 65Hz- 20kHz
- Product Dimension: 227x87mm (9" x 3.4")
- Cutout Size: 210mm (8.3")



## PACKAGE CONTENTS

IC8V-BSC 8" In-Ceiling Speaker

Magnetic Grille

Product Manual

**PART NO.**

IC8V-BSC

## 8" IN-CEILING 70V SPEAKER BEALE BASICS SERIES

- Woofer: 8" Kevlar Type Woven Cone
- Tweeter: 0.75" Titanium Dome
- RMS Power: 80W
- Nominal Impedance: 8 $\Omega$
- Transformer: 10W-5W-2.5W10W
- Sensitivity: 90dB
- Installed Frequency Response: 50Hz- 20kHz
- Product Dimension: 227x105mm (10.9" x 4.1")
- Cutout Size: 258mm (10.2")



# BEALE BASICS ON-WALL/PENDANT SPEAKER

ON-WALL/PENDANT SPEAKER



## 6.5" ON-WALL/PENDANT SPEAKER BEALE BASICS SERIES

- Woofer: 6.5" Polypropylene
- Tweeter: 1" Silk Dome
- RMS Power: 40W
- Nominal Impedance: 8Ω
- Sensitivity: 85db
- Transformer: 70V: 2.5W-5W-10W-20W-NC & 8Ω, 100V: 5W-10W-20W-40W-NC & 8Ω
- Frequency Response(ffl3dB): 100Hz-20kHz
- Indoor/Outdoor Rating: IP66
- Unique mounting system allows for hanging from a ceiling or mounting to a wall
- Product Dimensions: 208mm x 280mm (8.2" x 11")

### PACKAGE CONTENTS

WP6V-BSC 6.5" On-Wall/  
Pendant Speaker

Pendant Mounting Accessories

Wall/Ceiling Mounting  
Accessories

Magnetic Grille

Product Manual

**PART NO.**

WP6V-BSC



## PENDANT SPEAKER ENCLOSURES AVAILABLE IN 6.5" AND 8"

- Compatible with most Beale Street Audio speakers with Sonic Vortex® technology
- Supports 8 ohm and 70V speakers and subwoofers
- Perfect for open-ceiling and exposed environments
- Water, weather and UV resistant for indoor and outdoor installations
- IP65 Rated
- Custom color-match in any space with paintable enclosure
- Paintable black grill provided with PESV-6B and PESV-8B
- Includes additional pendant mounting options and support



### PACKAGE CONTENTS

6.5" or 8" Pendant Speaker Enclosure  
Magnetic Grille (provided with PESV-6B and PESV-8B)  
Mounting Hardware  
Product Manual

PART NO.	COLOR	SIZE
PESV-6B	Black	6.5"
PESV-6W	White	6.5"
PESV-8B	Black	8"
PESV-8W	White	8"



## VOLUME CONTROL - ROTARY

- Impedance Matching Volume Control – Rotary
- Peak RMS Power Rating – 350W/ch
- Continuous RMS Power – 105W/ch
- Frequency Response – DC to 500 kHz +/- 0.1dB
- Mounting Depth – 1.8" (45mm)
- Electrical Junction Box – Fits Single Gang Box
- Speaker Impedance – 2-16 Ohms (single or multiple speakers)
- Connection Removable Screw Terminals
- Includes – White and Almond Decora Inserts



### PACKAGE CONTENTS

VCRI Rotary Volume Control  
White and Almond  
Decora Inserts  
Product Manual

**PART NO.**

VCRI

## VOLUME CONTROL - SLIDER

- Impedance Matching Volume Control – Slider
- Peak RMS Power Rating – 350W/ch
- Continuous RMS Power – 105W/ch
- Frequency Response – DC to 500 kHz +/- 0.1dB
- Mounting Depth – 1.6" (42mm)
- Electrical Junction Box – Fits Single Gang Box
- Speaker Impedance – 2-16 Ohms (single or multiple speakers)
- Connection Removable Screw Terminals
- Includes – White and Almond Decora Inserts

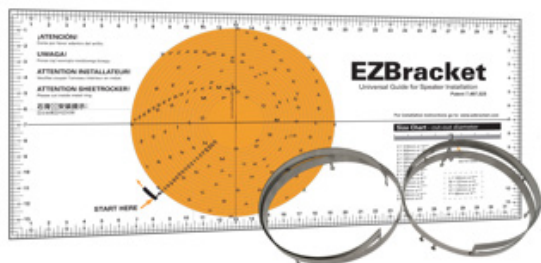


### PACKAGE CONTENTS

VCSI Slider Volume Control  
White and Almond  
Decora Inserts  
Product Manual

**PART NO.**

VCSI



## EZ BRACKET 2 AND 24 PACK

- Size – One Bracket Fits All – You will always have the correct bracket with you
- Patented universal template works with virtually all in-ceiling speakers
- Allows installers to have one speaker bracket on the job site
- Corrugated frame attached directly to ceiling joists with a staple gun for easy installation
- Pre-printed ruler on all sides ensures perfect alignment for each bracket and installed light cans
- Metal ring gives a sturdy guide and prevents cut-through with a RotoZip® tool

### PACKAGE CONTENTS

EZ Bracket

PART NO.	QTY
EZIC-2	2 Pack
EZIC-24	24 Pack



## 6.5" PRECONSTRUCTION BRACKET

- Dimensions (L x W) – Arms (10.75" x 2.5"); Ring (11.75" x 9.5")
- Cutout – 8.4"
- Material – ABS Plastic
- Beale Street Audio Speaker Models: IC6-B, IC6-MB, IC6-BB, ICA6-B, ICA6-MB, ICA6-BB, IC6DVC-B, ICW6-MB, P4-MB, P4-BB, TU401, TIC651, ICS6-MB, IC6-BSC, IC6V-BSC

## 8" PRECONSTRUCTION BRACKET

- Dimensions (L x W) – Arms (10.75" x 2.5"); Ring (15" x 11.5")
- Cutout – 10.3"
- Material – ABS Plastic
- Beale Street Audio Speaker Models: IC8-B, IC8-MB, IC8-BB, TIC801, ICS8-MB, IC8-BSC, IC8V-BSC

### PACKAGE CONTENTS

6.5" or 8" Preconstruction Bracket

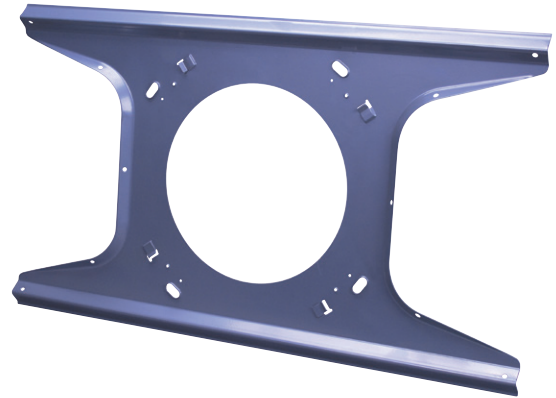
Product Manual

PART NO.	SIZE
PRECB65	6.5"
PRECB80	8"



## 6.5" TILE BRIDGE

- Dimensions: 23.8" x 13.9"
- Weight: 1.2lbs
- Cutout: 8.4"
- Material: Metal
- Beale Street Speaker Models: IC6-B, IC6-MB, IC6-BB, ICA6-B, IC6-MB, IC6-BB, IC6DVC-B, ICW6-MB, P4-MB, P4-BB, TU401, TIC651, ICS6-MB, IC6-BSC, IC6V-BSC



## 8" TILE BRIDGE

- Dimensions: 23.8" x 13.9"
- Weight: 1.4lbs
- Cutout: 10.3"
- Material: Metal
- Beale Street Speaker Models: IC8-B, IC8-MB, IC8-BB, TIC801, ICS8-MB, IC8-BSC, IC8V-BSC

### PACKAGE CONTENTS

6.5" or 8" Tile Bridge  
Product Manual

PART NO.	SIZE
TB65	6.5"
TB80	8"



## NOTES

---

---

---

---

---

---

---

---

---

---

---

---

---

---

---

---

---

NOTES

### PRODUCTS THAT PERFORM, OUR COMMITMENT TO QUALITY

**Vanco is committed to helping the dealer and distributor community succeed. As part of this commitment, Vanco QC tests 100% of our active products in the US before they leave our warehouse to ensure that distributors and their dealers receive only the highest quality products.**

Product Availability: Vanco International, LLC reserves the right to add or modify product availability without notice or cause.

The company "Vanco International, LLC" will not and cannot be liable for pictorial or typographical inaccuracies.

Trademarks: Vanco®, Beale Street Audio™ and Sonic Vortex® are registered trademarks of Vanco International, LLC. All other registered trademarks shown in this catalog are owned by their respective holders and are only used for descriptive purposes. Absence of an ® or ™ in connection with marks of vendors does not indicate an absence of registration of these marks.

## PART NUMBER INDEX

BEALE PRODUCT NUMBER	PAGE NUMBER	BEALE PRODUCT NUMBER	PAGE NUMBER	BEALE PRODUCT NUMBER	PAGE NUMBER
A120.....	16	IC6V-BSC .....	27	P4-MB.....	10
A220 .....	16	IC8-B.....	7	PESV-6B .....	29
BA2101.....	17	IC8-BB .....	7	PESV-6W .....	29
BA251.....	17	IC8-BSC.....	25	PESV-8B .....	29
BAV2500 .....	24	IC8-MB .....	7	PESV-8W.....	29
BAV4250 .....	23	IC8V-BSC.....	27	PRECB65.....	31
BPS-65 .....	14	ICA6-B .....	9	PRECB80.....	31
BPS-80 .....	14	ICA6-BB.....	9	TB65 .....	32
D2.1 .....	18	ICA6-MB .....	9	TB80 .....	32
DBT-TAYLOR.....	18	ICS6-MB .....	15	TIC651 .....	21
EZIC-2.....	31	ICS8-MB .....	15	TIC801 .....	22
EZIC-24 .....	31	ICW4-MB .....	11	TICW401.....	20
IC6-B.....	6	ICW6-MB .....	11	TU401 .....	19
IC6-BB .....	6	IPLCR4-BB .....	13	VCRI .....	30
IC6-BSC.....	25	IPLCR4-MB.....	13	VCSI .....	30
IC6DT-BSC .....	26	IWLCR4-BB .....	12	WP6V-BSC .....	28
IC6DVC-B .....	8	IWLCR4-MB .....	12		
IC6-MB .....	6	P4-BB .....	10		

# CONNECT WITH US

FOR THE LATEST IN PRODUCT INFORMATION, COMPANY NEWS AND EVENT LISTINGS VISIT US AT [VANCO1.COM](http://VANCO1.COM).  
CONNECT WITH US ON SOCIAL MEDIA FOR DAILY VANCO ANNOUNCEMENTS AND MORE.



A BRAND OF



[VANCO1.COM](http://VANCO1.COM)





Get Reale. Get Beale.™

vanco1.com  
800.626.6445