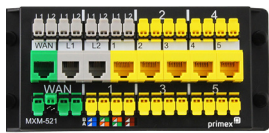


## Tool-Less Modules

### 8-Port Cat5e & 8-Port Cat6

8-port Cat5e & Cat6 Data/Voice Modules provide a termination point for simplified cross connect signal distribution from a central location.



Part #	Description
135-0061	8-Port Cat6 Tool-less Gateway Termination Module
135-0080	CAT5e Data/Voice Tool-less Module
135-0063	CAT6 Data/Voice tool-Tess Module

## Cat6, Cat6a Tool-less Jacks

### 180° UTP Keystone

High-performance Cat5e, Cat6, Cat6a 90° UTP keystone jacks fit in standard wall plates suited for high-speed data applications.

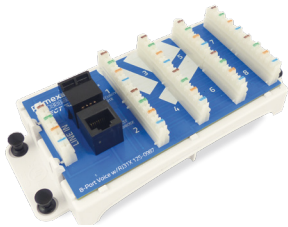


Part #	Description
125-1628-WT	Cat6a, 180° Tool-less, unshielded
125-1629-WT	Cat6a, 180° Tool-less, shielded
125-0351	Cat6, 180° Tool-less, unshielded

## Voice Module

### 8-Port Voice with RJ31X

8-port Voice Module offers telephone/fax termination points and an integrated RJ31X or RJ45 jack for emergency line seizure.



Part #	Description
125-0987	8-Port Voice Module w/RJ31X
125-0976	8-Port Voice Module w/RJ45
135-0068	4 line in/6 out Multi-provider Module
135-0083	4 line in/ 8 out Voice Module
135-0104	4 line in/8 out Modular Voice Module
135-0072	4 line in/ 10 out Voice Module

## Data Module

### 8-Port Cat5e & 8-Port Cat6

8-port Cat5e & Cat6/6A Data/Voice Modules provide a termination point for simplified cross connect signal distribution from a central location.



Part #	Description
125-0986	8-Port Cat5e Data/Voice Module
125-1035	8-Port Cat6 Data/Voice Module
125-0977	8-Port Cat6 Data/Voice w/RJ45
125-0975	8-Port Cat6A Data Module
135-0064	Cat6 Data Module
135-0087	Cat5e Data Module

## Combo Modules

### Cat6 & Cat6A

Modular units combine Cat6/6A with Coax and voice on one platform.



Part #	Description
125-1665	8-Port Cat6 & 1X4 Splitter
125-1666	6-Port Cat6A & 1X4 Splitter
125-1667	4-Port Cat6/ 4-Port Voice & 1X4 Splitter
125-1750	1X8 RJ45 & 1X8 Splitter

## Coax Splitters

### 2, 4, 6, 8-Way

Primex Coax Splitters are purpose-built to meet DOCSIS 3.1 and MOCA 2.5 standards.



Part #	Description
125-1661	2-Way Coax Splitter (horizontal)
125-1574	4-Way Coax Splitter (vert/horiz)
125-1575	6-Way Coax Splitter (vert/horiz)
125-1576	8-Way Coax Splitter (vert/horiz)

VIEW PRODUCT VIDEOS ONLINE AT: [WWW.PRIMEX.COM](http://WWW.PRIMEX.COM)

FOR MORE INFORMATION CONTACT:

1.604.881.7875 1.604.881.7835

[www.primex.com](http://www.primex.com) [f](#) [t](#) [in](#) [o](#) [v](#)



**3 Line Voice**  
RJ12 Voice Keystone

3 Line Voice RJ12 keystone jack fits in standard wall plates and provides easy termination of telephone/fax/alarm.



Part #	Description
125-0959-WT	3-line voice, HD

**Speedstar™ Connectivity**  
Cat5e, Cat6, Cat6a Jacks

SpeedStar™ connectivity jacks and plates deliver customizability with our patented, swappable keystone bezels available in eight colors.



Part #	Description
135-0214	Speedstar™ Cat5e Jack w/8 bezels
135-0019	Speedstar™ Cat5e Jack CorroShield™ Protection, w/8 bezels
135-0188	Speedstar™ Cat6 Jack w/8 bezels
135-0172	Speedstar™ Cat6 Jack w/2 bezels
135-0213	Cat6A 10 Gig Jack, w/8 bezels

**Fiber Auto-Shutter Jack**  
Fiber Keystone w/Auto Shutter

Fiber Keystone with Auto Shutter offers easy connectivity for workstation cabling termination on single mode and multimode fiber cables. Closes automatically upon fiber removal.



Part #	Description
125-0908	Fiber Keystone w/shutter

**F-Connector**  
3GHz Keystone Jack

F-Connector 3GHz Keystone jack fits in standard wall and surface mount plates and provides quick and easy coaxial connection.



Part #	Description
125-0961	F-connector 3GHz keystone

**Electrical Outlets**  
Gangbox kit & Rotating Outlet Doubler

The Electrical Kit features a gang box, outlet, faceplate, 4 conduit adapters and integrated cable clamp.

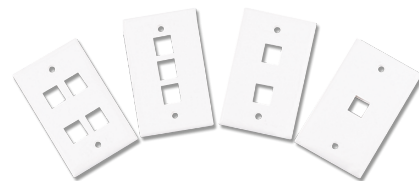
The surge protected 360° Electrical Outlet has unique rotating sockets allowing power cable routing within a tight space while doubling the sockets from 2-4 in a Primex Media Panel.



Part #	Description
125-1355	Electrical Installation Kit
125-1547	360° Rotating Surge Protected Outlet

**Wall Plates**  
Single-Gang, 1-4 Port

Single-Gang Wall Plates for Cat5e, Cat6, Cat6a and Fiber jacks offer application scalability in a small footprint.



Part #	Description
125-0957-WT	Single-gang wall plate, 1-port
125-0958-WT	Single-gang wall plate, 2-port
125-0955-WT	Single-gang wall plate, 3-port
125-0956-WT	Single-gang wall plate, 4-port
135-0202	Single-gang blank wall plate, white

VIEW PRODUCT VIDEOS ONLINE AT: [WWW.PRIMEX.COM](http://WWW.PRIMEX.COM)

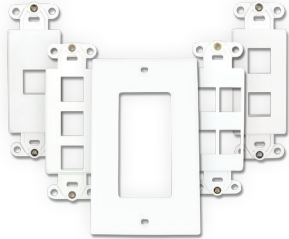
FOR MORE INFORMATION CONTACT:

1.604.881.7875 1.604.881.7835  
[www.primex.com](http://www.primex.com) [f](#) [t](#) [in](#) [o](#) [y](#)



**Wall Jacks**  
Decorative Ports & Plate

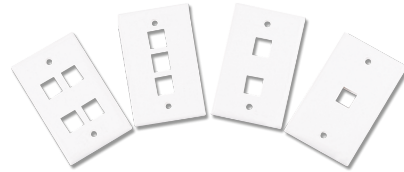
Decorative Wall Jacks and single-gang faceplate for Cat5e, Cat6, Cat6a and Fiber jacks offer application scalability in a small footprint.



Part #	Description
125-0951-WT	Decorative wall jack, 1-port
125-0952-WT	Decorative wall jack, 2-port
125-0953-WT	Decorative wall jack, 3-port
125-0954-WT	Decorative wall jack, 4-port
125-0950-WT	Decorative wall plate

**Oversize Wall Plates**  
Single-Gang, 1-6 Port

Single-Gang Oversize Wall Plates for Cat5e, Cat6, Cat6a and Fiber jacks offer application scalability in a small footprint.



Part #	Description
125-1241-WT	Oversize wall plate, 1-port, glossy
125-1236-WT	Oversize wall plate, 2-port, glossy
125-1242-WT	Oversize wall plate, 3-port, glossy
125-1243-WT	Oversize wall plate, 4-port, glossy
125-1244-WT	Oversize wall plate, 6-port, glossy
125-1288-WT	Oversize wall plate, 2-port, w/Cat6 & Coax, glossy
125-1237-WT	Oversize wall plate, 2-port, w/Cat6 & Coax, textured

**Angled Wall Plates**  
Single-Gang, 2 Port

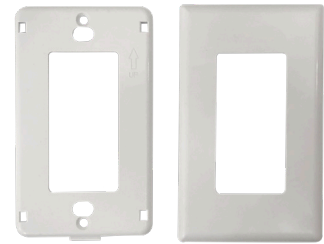
The Primex angled wall plate for Cat5e, Cat6/6A, Coax and Fiber jacks offer protected connectivity in an aesthetically-pleasing design.



Part #	Description
125-0984-WT	Single-gang angled wall plate, 2-port

**Wall Plates**  
Snap-In

The Primex Single Gang Snap-in Wall Plate offers a fresh look to your home. Compatible with standard size decora inserts, easily install the wall plate in a snap.



Part #	Description
125-0969-WT	Snap-In Wall Plate

**CPO4**  
Customer Premise Outlet

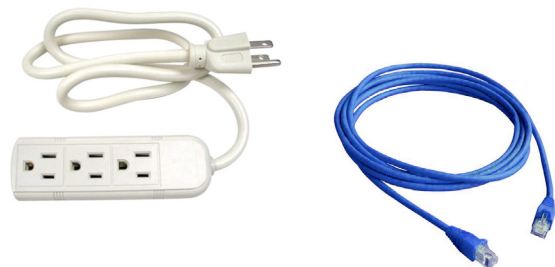
4-port customer premise wall outlet is compatible with Cat5e, Cat6, Cat6a, RJ11, RJ12, standard SC/APC adapters, as well as Primex's Auto Shutter Fiber Jack.



Part #	Description
125-0911	Customer Premise Outlet (4 port)

**Cabling**  
AC Power Extension & Cat6 Patch Cord

AC Power Extension that triples the amount of sockets available and the Cat6 Patch Cord has multiple sizes: 4ft, 8ft and 12ft to offer higher performance specifications needed for gigabit ethernet (1000 Base-T) applications.



Part #	Description
135-0086	AC Power Extension
135-0228	Cat6 Patch Cord

VIEW PRODUCT VIDEOS ONLINE AT: [WWW.PRIMEX.COM](http://WWW.PRIMEX.COM)

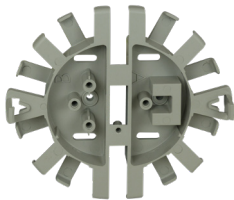
FOR MORE INFORMATION CONTACT:

1.604.881.7875 1.604.881.7835  
[www.primex.com](http://www.primex.com) [f](#) [t](#) [in](#) [o](#) [v](#)



**Fiber Management**  
Spider Spool

The Primex 'Spider' Fiber Management Spool is designed to route, manage and store fiber within Primex enclosures. It easily installs and provides bend-protected fiber management in diameters up to 3mm.



125-0928 Quick Release Fiber Spool



125-0929 Fiber Spool PVC

Part #	Description
125-0928	Quick Release Spider Spool (gray)
125-0929	Spider Spool (gray)
125-0933	Spider Spool (white)

**Fiber Management**  
Hurricane Clip

The Primex Hurricane Clip is a durable, multi-purpose accessory that provides quick, secure installation and management of cable. The clip is easily flush-mounted on any Primex Wave or SOHO Pro™ enclosure, and adaptable to a range of other applications.



Single Hurricane Fiber Clip



Dual Hurricane Fiber Clip

Part #	Description
125-0237	Hurricane Cable Clip (grey)
125-0239	Hurricane Cable Clip (white)
125-1791	Grey PVC Dual Hurricane Clip

**Tools**  
Flush Cutter Tool, Cable Ties, Hex Tool

Flush Cutter is a precision snipping tool ideal for cutting wires, removing knockouts on Primex Media Panels, and trimming cable ties.



Part #	Description
125-1683	Flush Cutters w/4" Cable Ties (10)
125-1333	Cable Tie, 4", Black, 50/bag
125-1334	Cable Tie, 4", Natural, 50/bag
125-1335	Cable Tie, 8", Black, 50/bag
125-1336	Cable Tie, 11", Natural, 50/bag
125-1337	Cable Tie, 11", Black, 50/bag
125-0609	Hex Screw Tool

**Tools**  
RJ Crimping Tool

The Primex Compact RJ Crimping Tool is designed for the professional installer and provides simultaneous crimping and trimming.



Part #	Description
125-1423	Compact RJ Crimping Tool
125-0756	Cat6 UTP Snap Plug, 100pc
125-0758	Cat6a UTP Snap Plug, 100pc
125-0826	Trimable Boots for Snap Plug, 100pc

**Tools**  
Crimping Tool

The Primex Keystone Jack Crimping Tools are available in 90 or 180 degrees, these crimping tools ensure quick and consistent connectorization for standard cable diameters.



Part #	Description
125-1402	Crimping Tool, 180°
125-1447	Crimping Tool, 90°

**Tools**  
Punchdown Puck

The Primex field punchdown termination puck protects hands while providing a fast and easy way of terminating modules and jacks requiring punchdown termination.



Part #	Description
135-0207	Punchdown Puck

VIEW PRODUCT VIDEOS ONLINE AT: [WWW.PRIMEX.COM](http://WWW.PRIMEX.COM)

FOR MORE INFORMATION CONTACT:

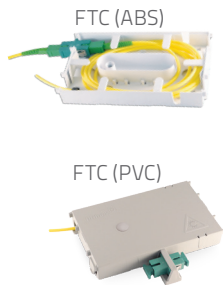
1.604.881.7875 1.604.881.7835

[www.primex.com](http://www.primex.com)



**FTC**  
Fiber Transition Case

The Fiber Transition Case (FTC) is an efficient and adaptable solution for storing up to 3' of fiber drop cable and a simplex connector. The FTC is ideal for test points, FTTH, and repair splices.



Part #	Description
125-0945	White ABS FTC w/screw cap
125-0873	White ABS FTC w/single SC/APC Adapter
125-0849	White ABS FTC w/adapter mount
125-0848	Grey PVC FTC w/screw cap
125-0850	Grey PVC FTC w/adapter mount

**FTC2**  
Fiber Transition Case

The Primex Fiber Transition Case 2 (FTC2) is a compact, elegant transition point for storing up to 3' of fiber drop cable and a simplex connector, conveniently fits over the footprint of standard wall outlets or within Primex SOHO Pro™ Media Panels.



Part #	Description
125-1778	FTC2 standard
125-1828	FTC2 w/SC/APC fiber adapter
125-1827	FTC2 w/angled shutter SC/APC adapter

**FTO**  
Fiber Transition Outlet

The Fiber Transition Outlet (FTO) is a quick-splice solution that manages up to 3' of fiber drop cable.

This compact enclosure offers flexible entry ports and an integrated splice tray that accommodates up to two fusion splices with room for two fiber adapters and buffer tube management.



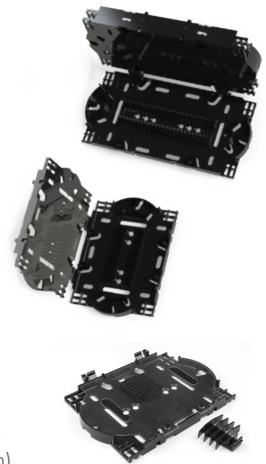
\*UPC available

Part #	Description
125-0879	FTO White w/Splice Tray
125-0891	FTO Grey w/Splice Tray
125-0889	FTO White w/1 SC/APC adapter
125-1749	FTO White w/2 SC/APC adapters

**Fiber Splice Tray**  
12, 24, and Universal Splice Trays

The Fiber Splice Trays offer secure, efficient management of 12-24 fibers within Primex Wave outside plant enclosures.

Easily stacked and scalable, these sturdy trays protect fiber bend radius across a range of splicing applications and are ideal for MDU applications where splicing is required between outdoor and indoor fiber.



Part #	Description
125-1520	Fiber Splice Tray, 12 Fiber
125-1521	Fiber Splice Tray, 24 Fiber
125-1620	Universal Fiber Splice Tray (mechanical, fusion, ribbon)

**Fiber Multi-Port**  
Drop Cable Enclosure Ports

The Primex Fiber Multi-Port is an easy-to-install lay-in grommet that seals out dust and critters from enclosures.

Ideal for multiple drops from either a splitter or splice, the Multi-Port runs from 1-8 fibers between 2mm - 4.3mm.

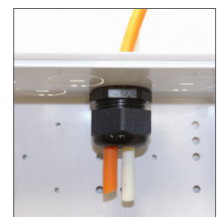


Part #	Description
125-1012	Multi-port - 8 fiber
125-1025	Multi-port - 1 fiber
125-1026	Multi-port - 2 fiber (3mm)
125-1027	Multi-port - 2 fiber (4.3mm)
125-1028	Multi-port - 4 fiber (3.8mm)
125-1029	Multi-port - 6 fiber
125-1038	Multi-port - 4 fiber (2mm)

**Microduct Termination Port**  
8.5/10mm Microduct

The Microduct Termination Port provides strain relief for standard 8.5 and 10mm microduct. It threads through the knockout of Primex in-wall Media Panels with minimal effort.

The ruggedized unit can be installed in upward or downward facing positions to manage access to the sealing ring. It's compatible with Primex Media Panels: PR1500, P2100, P3000, P4200 and P6300.



Part #	Description
125-1674	Microduct Termination Port for Primex Media Panels

VIEW PRODUCT VIDEOS ONLINE AT: [WWW.PRIMEX.COM](http://WWW.PRIMEX.COM)

FOR MORE INFORMATION CONTACT:

1.604.881.7875 1.604.881.7835

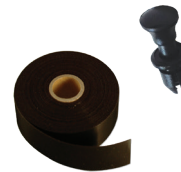
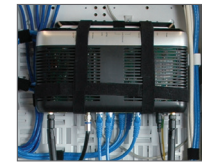
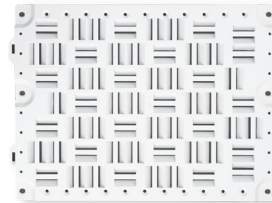
[www.primex.com](http://www.primex.com) [f](#) [t](#) [in](#) [o](#) [u](#)



**UMS**  
Universal Mounting System

The patented Universal Mounting System (UMS) includes the plate, tape and pushpins, and mounts components and accessories easily in the P2100, P3000, P4200, P6300, and PR1500 SOHO Pro™ Media Panels.

The durable plate snaps into place quickly via the pushpins while the tape secures them in place. Available as individual pieces or as a kit.

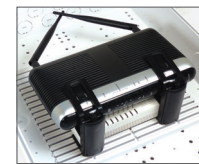


Part #	Description
125-0770	Universal Mounting Plate (UMP)
125-0779	33' roll of tape
125-1274	10' roll of tape
125-0829	Pushpins (100/bag)
<b>Kit:</b>	
125-1623	10" UMP w/5' tape, pushpins (x10)

**RMS**  
Rail Mounting System

Patented Rail Mounting System (RMS) includes the plate and brackets. It mounts components and accessories easily in the P2100, P3000, P4200, P6300, and PR1500 SOHO Pro™ Media Panels.

The plate snaps into place via pushpins while the toolless brackets hold components securely. Available as individual pieces or as a kit.



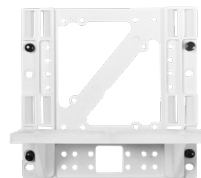
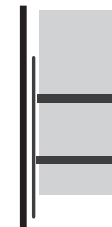
Part #	Description
125-1164	Rail Mounting Plate (7")
125-1165	Rail Mounting Plate (10")
125-1213	6 pack, Rail Mount Bracket
125-1214	6 pack, Dual Rail Mount Bracket
125-1338	Rail Mount Keyhole

For kit information visit: [www.primex.com](http://www.primex.com)

**SMS**  
Shelf Mounting System

The patented Shelf Mounting System (SMS) extends the mounting functionality of the SOHO Pro™ P2100, P3000, P4200, P6300, and PR1500 Media Panels. It provides 3.5" of mounting depth in the interior of the Media Panel and holds bulkier and heavier components securely.

It also compartmentalizes service providers for discrete access (Service Divider Kit). Available individually, as a Service Divider pack, or in bulk.



Part #	Description
125-1729	SMS Shelf (single), 2' mounting tape, 10x pushpins
125-1541	SMS Shelf (single), 10x pushpins
125-1542	SMS 'Service Divider' Kit (dual), 10x pushpins
125-1522	125-1522 SMS Shelf (bulk/18), 5' mounting tape, 10x pushpins

VIEW PRODUCT VIDEOS ONLINE AT: [WWW.PRIMEX.COM](http://WWW.PRIMEX.COM)

FOR MORE INFORMATION CONTACT:

1.604.881.7875 1.604.881.7835

[www.primex.com](http://www.primex.com)

