

IX-DVF-10KP

INSTALLATION AND PROGRAMMING GUIDE

The IX-DVF-10KP is an IX Series video door station with a combination keypad and proximity card reader. The IX-DVF-10KP will connect to a network switch, and the built-in keypad connects to an access control system with a Wiegand connector.

IX-DVF-10KP



Names and Functions

1. Camera
2. Microphone
3. White LED for night viewing
4. Speaker
5. Call button
6. Proximity card reader and keypad

Features

- IP video door station
- Proximity card reader and access keypad
- Stainless steel faceplate with tamper resistant screws

PACKAGE CONTENTS



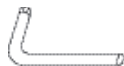
IX-DVF-10KP
Door Station



Flush Mount Back Box and
Mounting Bracket



2 Security Screws
4 Bracket Screws



Security Driver



Door Release
Wire Harness



Keypad Instructions

Installation

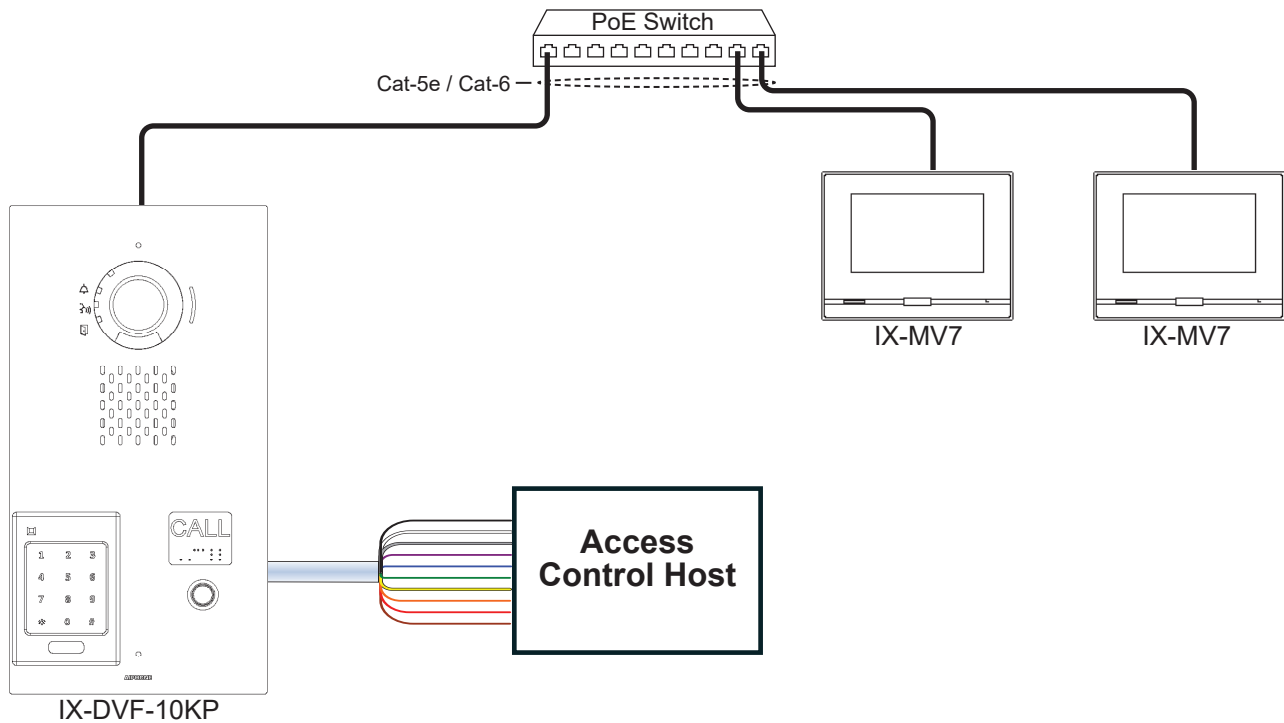
For flush mounting, recess the supplied back box into the wall, then attach the mounting bracket using the four provided screws.

For surface mounting, use the SBX-IXGDM7 surface mount box. This box can mount to a standard single-gang box or to any flat surface.

Use the two standoffs to install the security screws. These are required for both the included back box and the SBX-IXGDM7 surface mount box.

Back Box Dimensions: 12-1/2" H x 6-1/8" W x 2-3/8" D
IX-DVF-10KP Dimensions: 13-11/16" H x 7-3/16" W

Wiring Diagram



Specifications

Door Station:

Camera unit:	1/3" color CMOS 1.23 megapixel
Min. illumination:	5 Lux
Terminations:	RJ45
Operating Temp:	-31° ~ 140°F / -35° ~ 60°C
Wiring Distance:	328' with Cat-5e/6 cable to switch
Dimensions:	13-11/16" H x 7-3/16" W
w/ SBX-IXGDM7:	13-3/4" H x 7-5/16" W x 3-1/16" D

Proximity Reader w/ Access Keypad

Supported

Credentials: Aiphone 40-bit, HID, AWID, Pyramid

Wiring: Wiegand Connection

FCC WARNING:

This device complies with Part 15 of the FCC rules.

Operation is subject to the following two conditions:

- (1) This device may not cause harmful interference.
- (2) This device must accept any interference that may cause undesired operation.
 - For proper regulatory compliance, the drain wire should be disconnected at the power supply end of the cable.
 - Changes or modifications not expressly approved by the party responsible for compliance could void the user's authority to operate the equipment.

Getting Started

This programming guide will cover how to program an IX-DVF-10KP door station and IX-MV7 master stations using the IX Support Tool software. For additional information and documentation for the IX system, please visit www.aiphone.com/ix.

Programming instructions for the keypad are included separately. If the keypad is being used in conjunction with Aiphone's AC Series access control system, please visit www.aiphone.com/ac for more information.

Creating a New System

Open the IX Support Tool, then select **File** from the top menu and click **Create New System**. Enter in a System Name, and select the **No** radial button for Wizard Programming. Enter a system ID and Password. Enter station quantities and then click **Finish**.

New System

System Settings

System Name:

IP Version: IPv4

Enter contact information (optional):

Installer Information:

Displays in CONTACT INFORMATION of IX-MV7-* IX-SOFT.

Owner Information:

Notes:

Expanded System

Wizard Programming: Yes No

Automatically configure door release for all stations? Yes No

System ID: 1-20 alphanumeric characters

System Password: 1-20 alphanumeric characters

IX Support Tool Settings

Enter the number of stations:

Master Stations

IX-MV7-*: 6 Station(s)

IX-MV: 1 Station(s)

IX-SOFT: 1 Station(s)

IX-DV, IX-DVF(-*): 2 Station(s)

Video Stations

IX-DV, IX-DVF(-*): 2 Station(s)

IX-DVM: 1 Station(s)

IX-EA, IX-EAU: 1 Station(s)

IX-DA: 1 Station(s)

Audio Stations

IX-SSA(-*): 1 Station(s)

IX-SS-2G: 1 Station(s)

IX-FA: 1 Station(s)

IX-SPMIC: 1 Station(s)

IX-BA: 1 Station(s)

IX-RS-*: 1 Station(s)

Others

IXW-MA: 1 Station(s)

Finish Cancel

i The IX-DVF-10KP counts as an IX-DV, IX-DVF(-*) station in this section.

Station Information

Support Tool will open in Table View on the **Station Information, Identification** page. Enter unique Station Numbers and Names for each station. Click **Update** to save the changes.

AIPHONE IX Support Tool

Update

Table View

Remove Station Location Registry

Number of Notes: 2

1. Locations must be created in the Location Registry before they can be assigned to a Station.
2. Station Type cannot be changed once registered. To modify, station must be removed.

Station Information

Text in red are required settings

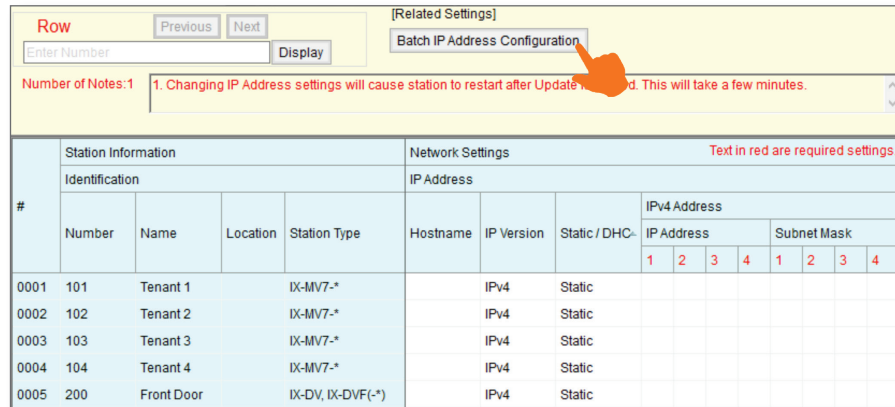
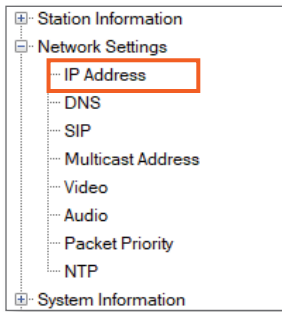
#	Number	Name	Location	Station Type
0001	101	Tenant 1		IX-MV7-*
0002	102	Tenant 2		IX-MV7-*
0003	103	Tenant 3		IX-MV7-*
0004	104	Tenant 4		IX-MV7-*
0005	200	Front Door		IX-DV, IX-DVF(-*)

Update

i Some versions of IX Support Tool will have a Save button in place of the Update button.

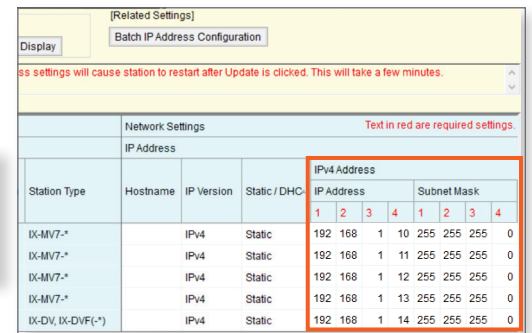
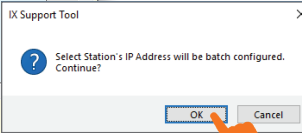
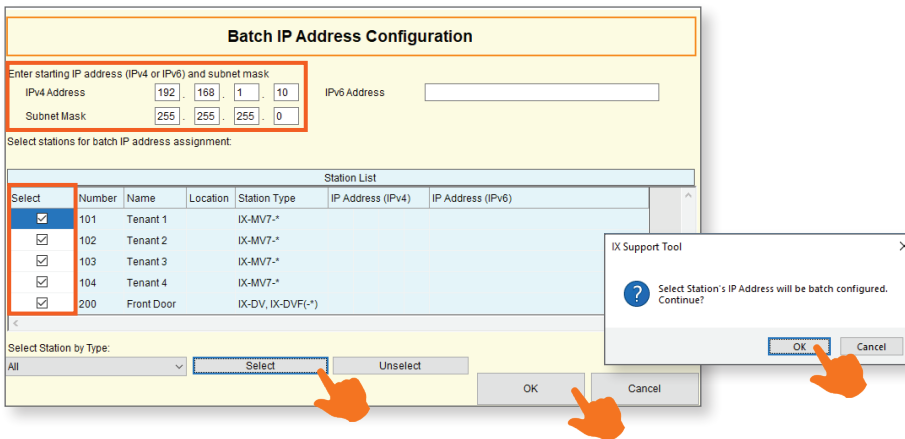
Network Settings - IP Address

The IP addresses for the stations can be individually set for each station or they can be configured in a batch. This guide will show how to assign via the batch configuration. Navigate to **Network Settings**, **IP Address**, then click on **Batch IP Address Configuration**



Batch IP Address Configuration

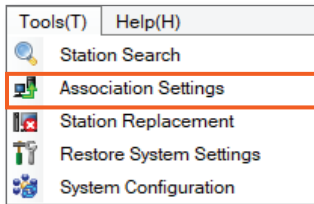
On the **Batch IP Address Configuration** page, enter a starting IP address and subnet mask. Check the box beside each station or click **Select** to check all stations at once. Click **OK**, then click **OK** on the confirmation pop-up. Each station will now have an IP address and Subnet Mask assigned to it.



i If a Default Gateway address is required, it can be manually added on this page once the IP addresses have been assigned.

Association Settings

The station name and IP address that were assigned in the previous steps will now need to be associated to each station in the system before any call settings can be uploaded. From the top menu bar, navigate to **Tools(T)**, Association Settings.



When the Association Settings window opens, it will automatically begin searching for any IX stations on the network. Once this is complete, select a configuration in the Station Settings List at the top, then select the station to assign it to in the Station List. Click **Apply** and **OK** on the pop-up to start the association process for that station, then repeat these steps for the remaining stations.

Station Settings List							
Select	Number	Name	Location	Station Type	Hostname	IP Address	Associated
<input checked="" type="radio"/>	101	Tenant 1		IX-MV7-*		192.168.1.10	-
<input type="radio"/>	102	Tenant 2		IX-MV7-*		192.168.1.11	-
<input type="radio"/>	103	Tenant 3		IX-MV7-*		192.168.1.12	-
<input type="radio"/>	104	Tenant 4		IX-MV7-*		192.168.1.13	-
<input type="radio"/>	200	Front Door		IX-DV, IX-DVF(-*)		192.168.1.14	-

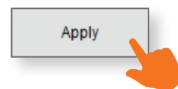
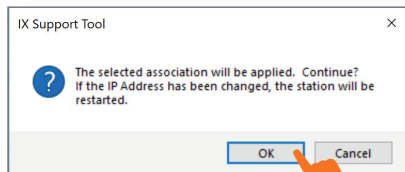
2. Select the station to associate with the setting file.

Enter station MAC address: Different Networks

Search and select station within local network:

Station List						
Select	Number	Name	Location	Station Type	MAC address	Associated
<input checked="" type="radio"/>				IX-MV7-*	00:0B:AA:2F:02:1A	-
<input type="radio"/>				IX-MV7-*	00:0B:AA:2F:02:2D	-
<input type="radio"/>				IX-MV7-*	00:0B:AA:2F:01:AC	-
<input type="radio"/>				IX-MV7-*	00:0B:AA:2F:02:DB	-
<input type="radio"/>				IX-DV, IX-DVF(-*)	00:0B:AA:27:03:1A	-

i If the Station Search fails to find any stations, verify that the stations are powered on and that the PC is connected to the same switch.

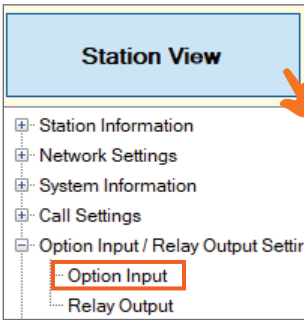


Once associated, the stations will restart with the IP address and station name assigned. Scroll down to the Associated Stations List at the bottom of the page to confirm the status of the association.

Associated Stations List							
Select	Number	Name	Location	Station Type	IP Address	MAC address	Status
<input type="checkbox"/>	101	Tenant 1		IX-MV7-*	192.168.1.10	00:0B:AA:2F:02:1A	Success
<input type="checkbox"/>	102	Tenant 2		IX-MV7-*	192.168.1.11	00:0B:AA:2F:02:2D	Success
<input type="checkbox"/>	103	Tenant 3		IX-MV7-*	192.168.1.12	00:0B:AA:2F:01:AC	Success
<input type="checkbox"/>	104	Tenant 4		IX-MV7-*	192.168.1.13	00:0B:AA:2F:02:DB	Success
<input type="checkbox"/>	200	Front Door		IX-DV, IX-DVF(-*)	192.168.1.14	00:0B:AA:27:03:1A	Success

Call Button Settings - Option Inputs

The IX-DVF-10KP's call button is wired to Option Input 1. This input will need to be programmed to place a call. Click **Station View**, then navigate to **Option Input/Relay Output Settings**, **Option Input**.



Option Inputs

In the **Select Station to Edit** menu, use the **Number** drop-down to select the IX-DVF-10KP, then click **Select**. Use the **Option Input** drop-down to select **Option Input 1**. Click the **Call** radial button, then click **Update**.

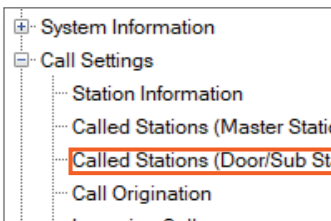
A screenshot of the 'Select Station to Edit' form. It shows fields for Station Number (200), Station Name (Front Door), Location, and Station Type (IX-DV, IX-DVF(-*)). There are dropdown menus for Type (All) and Number (200). At the bottom, there are 'Previous', 'Select', and 'Next' buttons. The 'Select' button is highlighted with a red box.

A screenshot of the 'Option Input' configuration form. The 'Option Input #' dropdown is set to 'Option Input 1'. The 'Name' field is empty. The 'Function' section has radio buttons for 'No Function', 'Call', 'Answer Call / Page', 'Paging', and 'Message Page'. The 'Call' option is selected and highlighted with a red box. There are also 'Update' and 'Previous' buttons.



Called Stations Groups

Once the Option Input is set to call, a Called Station Group will be assigned to each to allow for selective calling from each button. Navigate to **Call Settings**, **Called Stations (Door/Sub Stations)**. Use the **Group Number** drop-down to select **Group 01**.



A screenshot of the 'Called Stations (Door/Sub Stations)' form. It contains instructions: 'U = Unicast, M = Multicast. If designating "M", multicast IP addresses must be configured for the station(s). To register a VoIP Phone, go to Network Settings -> SIP and enter the IP address of the SIP Primary Server. Only one VoIP Phone can be set per group.' There is a 'Group Number' dropdown set to 'Group 01' and a 'VoIP Phone Registration' button.

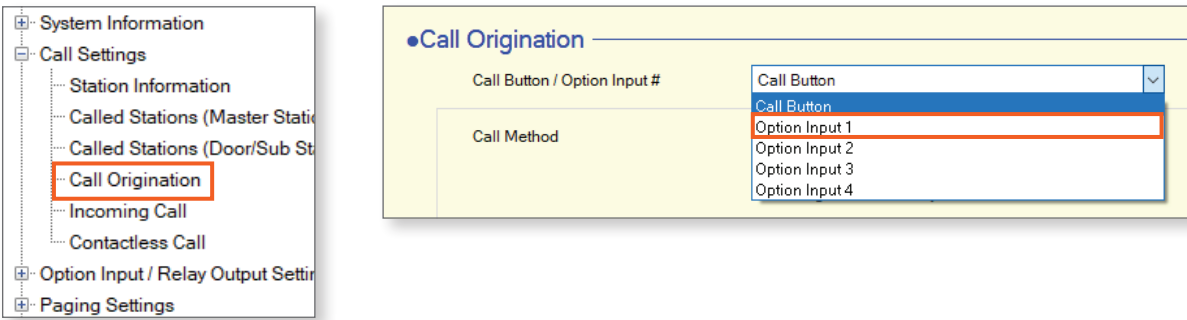
By default, **Group 01** will contain all master stations in the system. If these need to be changed, use the **Open** and **Delete** buttons to add or remove master stations from the list. Once the call group is configured, click **Update**. If any other inputs are being configured to place calls when activated by third party equipment, switch to the next group using the **Group Number** drop-down. Repeat these steps to configure these call groups.

#	Number	Station List	IPv4 Address	IPv6 Address	Station Type	Protocol	Delete
01	101	Open	192.168.1.10		IX-MV7-*	U	Delete
02	102	Open	192.168.1.11		IX-MV7-*	U	Delete
03	103	Open	192.168.1.12		IX-MV7-*	U	Delete
04	104	Open	192.168.1.13		IX-MV7-*	U	Delete
05	105	Open	192.168.1.14		IX-MV7-*	U	Delete
06	106	Open	192.168.1.15		IX-MV7-*	U	Delete

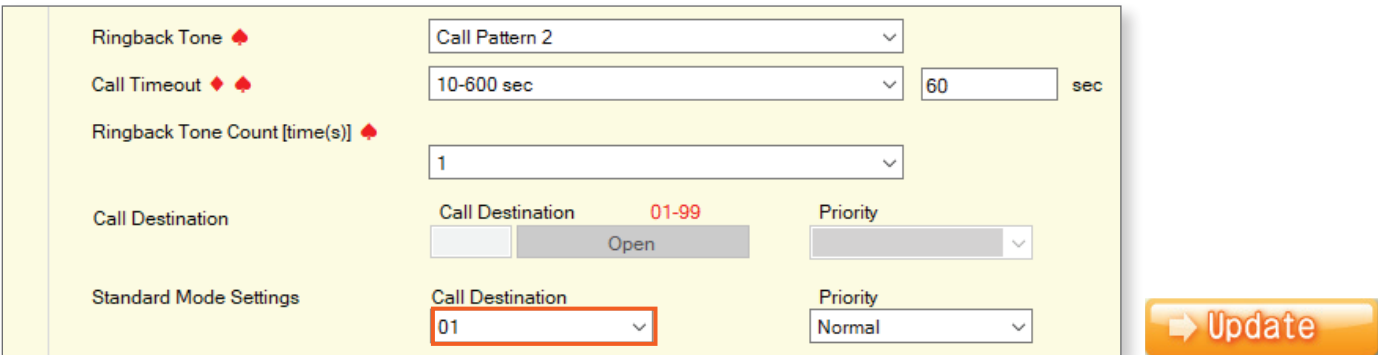


Programming the Call Button

To link the Called Stations groups to the call button on the door station, navigate to **Call Settings**, Call Origination. Use the **Call Button / Option Input #** drop-down and select **Option Input 1**.

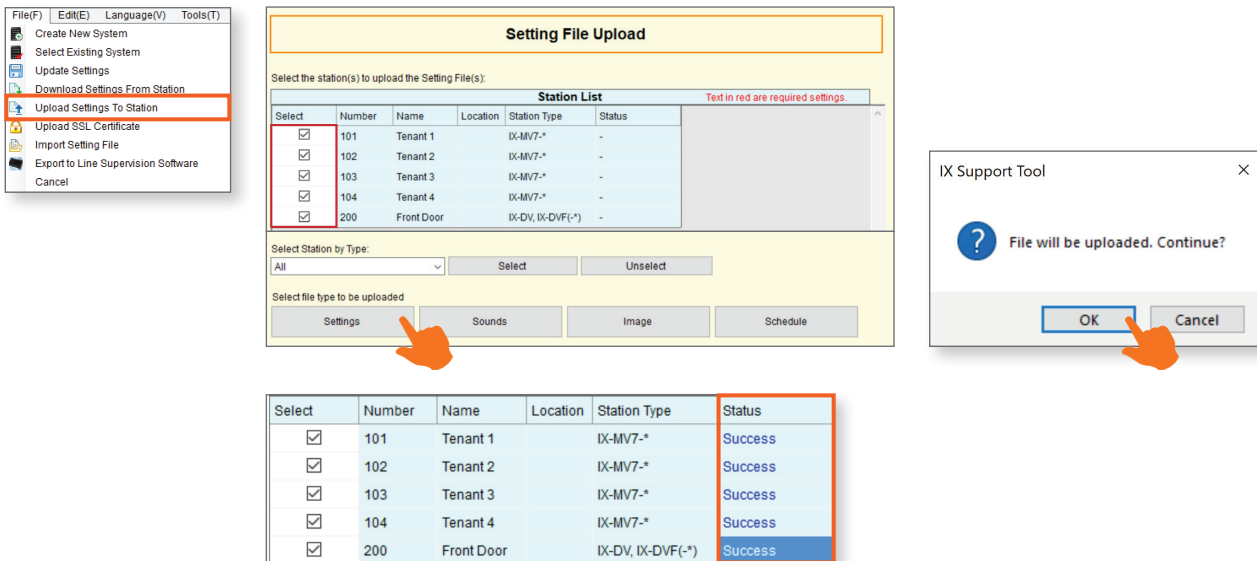


Use the **Standard Mode Settings**, Call Destination drop-down to assign a call group to the Option Input. Click **Update**. If any other option inputs are being used for calling, switch to the next Option Input and repeat these steps as necessary.



Setting File Upload

Once all settings are configured, select **File (F)** from the top bar and select **Upload Settings to Station**. Click **Select** to check all of the stations, then click on **Settings**. Once **OK** is pressed on the confirmation pop-up, the upload process will start. This process will take around 30 seconds to a minute. Once it is complete, confirm that the Status column shows Success for each station.



For more details about the features and information above, please contact Technical Support.