



GV-IP Speaker User's Guide

This document describes how to add and control GV-IP Speaker with GV-Control Center and GV-VMS. And how to locate the speaker and update its firmware using GV-IP Speaker Setting Kits.

1. Compatible Software	1
2. Adding to GV-Control Center	2
2.1 Searching for a Speaker	2
2.2 Manually Adding a Speaker	3
2.3 Associating a Speaker with a Camera	4
2.4 Speaker Controls	5
3. Adding to GV-VMS	7
3.1 Searching for a Speaker	7
3.2 Manually Adding a Speaker	8
3.2 Associating a Speaker with a Camera	9
3.3 Speaker Controls	9
4. GV-IP Speaker Setting Kits	11
4.1 Changing the IP Address	14
4.2 Updating the Firmware	15

1. Compatible Software

- **GV-Control Center** V4.2.0 or later
- **GV-VMS** V17.4.7 / V18.3.2, patch files required



2. Adding to GV-Control Center

Add a speaker to GV-Control Center and assign the speaker to a channel.

2.1 Searching for a Speaker

To use the auto search function, the speaker must be installed on the same LAN as GV-Control Center.

1. On the Host List, click the **Add** button > **Add Host** > **Search Host**.
2. In the Search Host dialog box, select the discovered speaker.
3. You are prompted to enter ID and Password. By default, the ID is **admin** and the Password is **admin123**. Click **OK**.
4. You can add multiple IP speakers by entering their respective ID and Password.
5. Click **Add Selected Hosts**. The speaker is added to the Host List.

Note: To change the default ID and Password, you need to install the GV-IP Speaker Setting Kits, and access **Setting** > **ONVIFParam**. See 4. *GV-IP Speaker Setting Kits*.

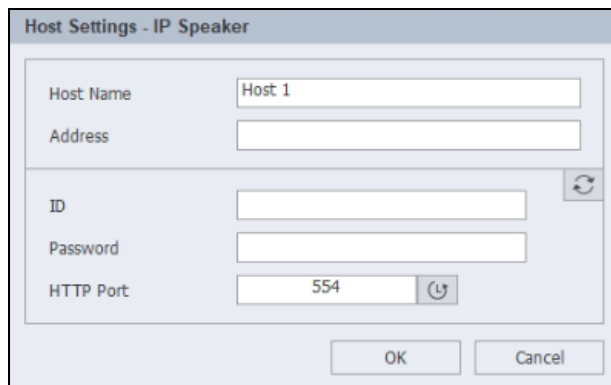



2.2 Manually Adding a Speaker

To use this method, you must already know the IP address of the speaker in order to add it to GV-Control Center.

Note: The speaker, by default, has a DHCP-enabled IP address, and no fixed IP address. See 3. *GV-IP Speaker Setting Kits* for discovering its IP address.

1. On the Host List, click the **Add** button > **Add Host** > **Add IP Speaker**.
2. On this dialog box, configure the following settings:



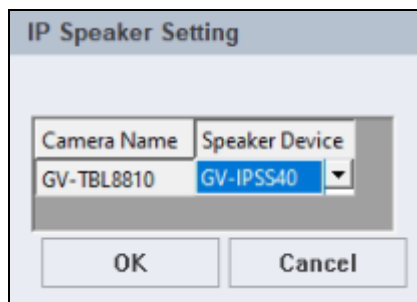
- **Host Name:** Name the speaker.
 - **Address:** Type the IP address of the speaker.
 - **ID & Password:** Type ID and Password. By default, the ID is **admin** and the Password is **admin123**.
 - **HTTP Port:** It is port 554 by default.
3. Click **Update Information**  to check if the speaker is connected successfully.
 4. Click **OK**. The speaker is added to the Host List.




2.3 Associating a Speaker with a Camera

You can associate a speaker with a camera of the following hosts: VMS/DVR/NVR, IP Camera, Video Server, Recording Server, SNVR, FR Server, AI Guard, USAVision HD DVR/NVR/SNVR, USAVision IP Camera.

1. On the Host List, right-click a supported host, and select **IP Speaker Setting**.
2. Select a speaker under Speaker Device, and click **OK**. The speaker is associated.



There are two ways to broadcast audio through the associated speaker:

1. Drop the camera to Live View and click the **Microphone** icon  to broadcast.
2. Click the speaker on the Host List to broadcast. See *2.4 Speaker Controls* below.

Note:

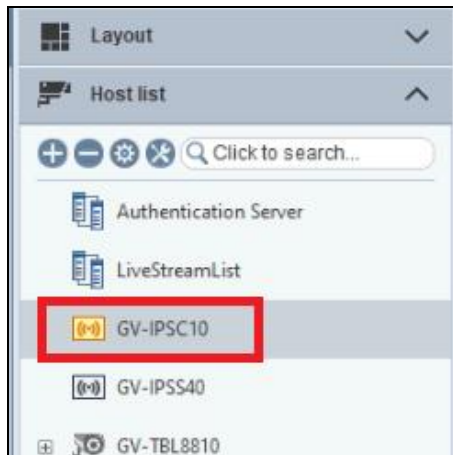
1. If you want to associate a camera with another speaker, remove the camera's image from the Live View window before enabling another speaker with the IP Speaker Setting.
 2. You can associate a speaker with multiple cameras.
-



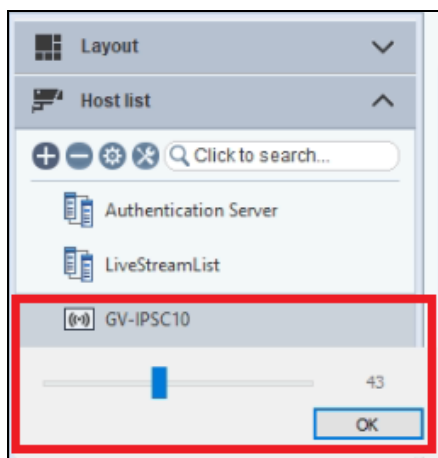
2.4 Speaker Controls

Make sure a microphone has been installed in the GV-Control Center system before broadcasting.

- **One-to-One Broadcast:** To broadcast audio through a specific speaker, press and hold the speaker icon. When the speaker is broadcasting, the icon turns orange.



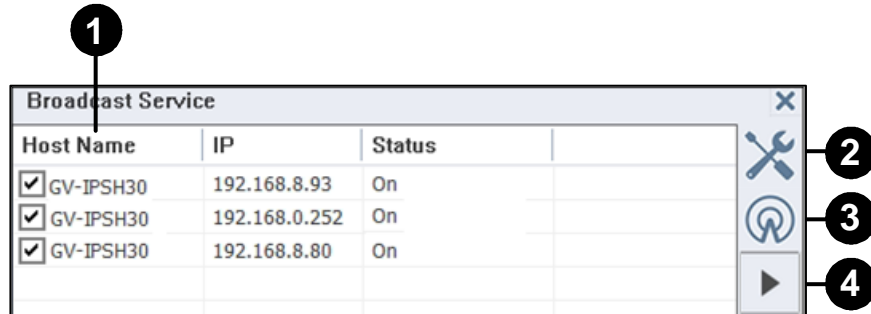
- **Volume:** To change the volume, right-click the speaker icon and select **Volume Setting**.



- **Play a WAV file:**
 1. Right-click the speaker icon, select **Play Wave File** and locate a .WAV file to play.
 2. When the "Want to Repeat Wave File?" message appears, click **Yes** to play the WAV file continuously.
 3. To stop playing, double-click the speaker icon.



- **Group Broadcast:** To broadcast audio through multiple speakers, select more than one speaker on the Host List, right-click on one of them, and select **Add to Broadcast Service** to display the control window shown below.



No.	Name	Description
1	Host	Select the desired hosts for audio broadcasting.
2	Setup	<ul style="list-style-type: none"> ■ Select Audio File: Locate a .wav file to play ■ Opacity: Select the opacity level of the window from 20% (fully transparent) to 100% (fully opaque). ■ Always on top: Always display the window on top of the screen.
3	Broadcast	Start / stop audio broadcasting.
4	Play File	After selecting an audio file, click the button to start/stop playing.

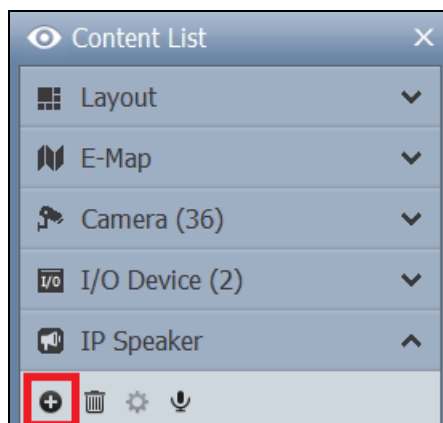


3. Adding to GV-VMS

3.1 Searching for a Speaker

To use the auto search function, the speaker must be installed on the same LAN as GV-VMS.

1. Under the IP Speaker of the Content List, click the **Add** button > **Scan Device**.



2. In the Scan Device dialog box, select a discovered device.
3. You are prompted to enter ID and Password. By default, the ID is **admin** and the Password is **admin123**. Click **OK**.
4. Click **Add selected devices**. The speaker is added to the Content List.

Note: To change the default ID and Password, you need to install the GV-IP Speaker Setting Kits, and access **Setting > ONVIFParam**. See 4. *GV-IP Speaker Setting Kits*.

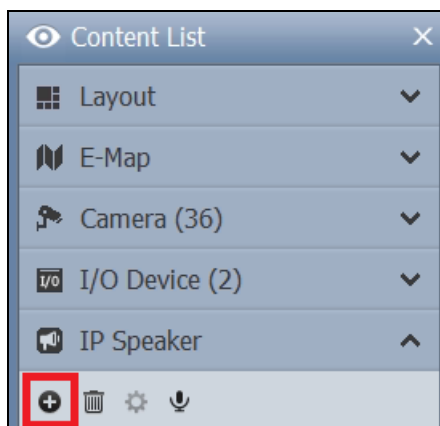


3.2 Manually Adding a Speaker

To use this method, you must already know the IP address of the speaker in order to add it to GV-VMS.

Note: The speaker, by default, has a DHCP-enabled IP address, and no fixed IP address. See 3. *GV-IP Speaker Setting Kits* for discovering its IP address.

1. Under the IP Speaker of the Content List, click the **Add** button > **Add IP Speaker**.

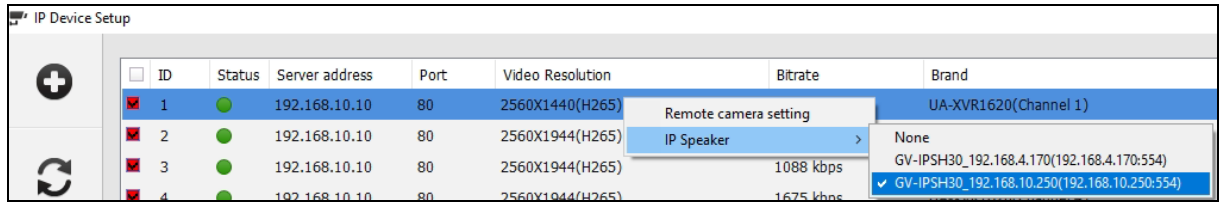


2. On the Add IP Speaker dialog box, configure the following settings:
 - **Name:** Name the speaker.
 - **IP:** Type the IP address of the speaker.
 - **Port:** Change it if necessary or keep the default value 554.
 - **ID & Password:** Type ID and Password. By default, the ID is **admin** and the Password is **admin123**.
3. Click **OK**. The speaker is added to the Content List.




3.2 Associating a Speaker with a Camera

In the IP Device Setup dialog box, right-click a camera, select **IP Speaker** and select a speaker. You can associate a speaker with multiple cameras

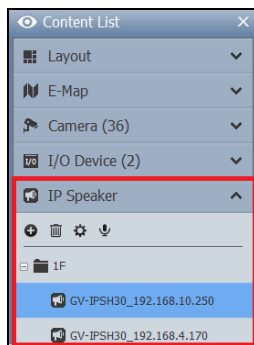









There are two ways to broadcast audio through the associated speaker:

1. Drop the camera to the live view grid and click the **Microphone** icon  to broadcast.
2. Click the speaker on the Content List to broadcast. See 3.3 *Speaker Controls* below.

3.3 Speaker Controls

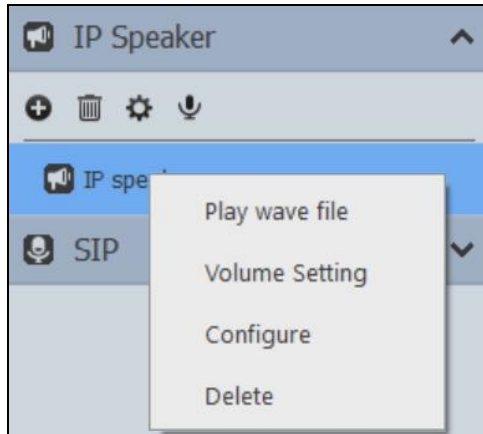
Make sure a microphone has been installed in the GV-VMS system before broadcasting.



Function	Description
Add 	<ul style="list-style-type: none"> ■ Scan Device: Detect speakers on the same LAN as GV-VMS. ■ Add Group: Create a group for speakers
Delete 	Delete a listed speaker or a created group.
Configure 	Select a speaker and click the icon to configure its name, IP address, port, login ID and password.
Speaker 	Press and hold the icon. The icon turns green  . The operator can then broadcast audio through a selected group of speakers.
Speaker 	Press and hold the icon. The icon turns blue  . The operator can then broadcast audio through a selected speaker.



When you right-click a speaker on the Content List, you will have the following options:

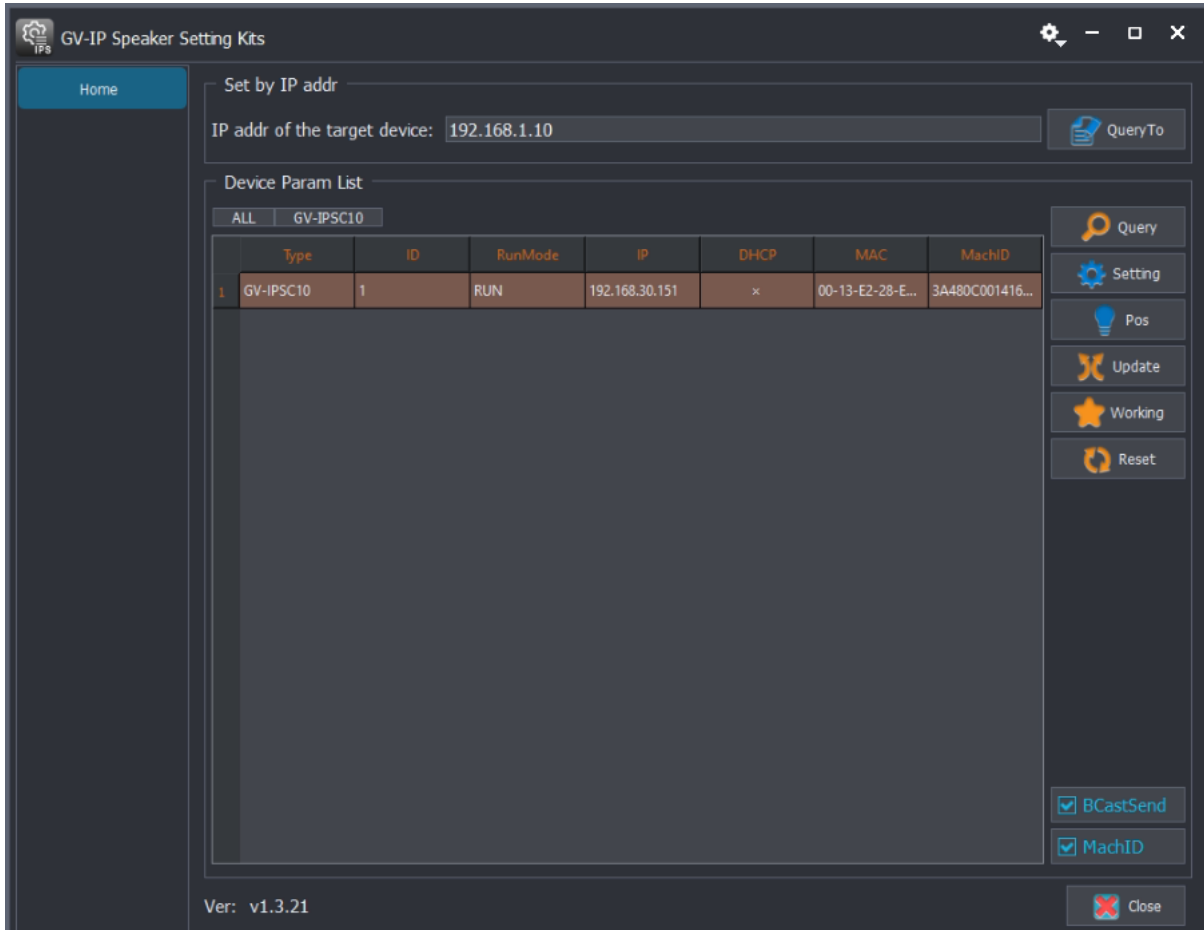


Function	Description
Play WAV File	Plays a selected WAV file. To stop playing, double-click the speaker icon.
Volume Setting	Changes the volume of the speaker.
Configure	Changes the connection settings of the speaker.
Delete	Removes the speaker from the Content List.


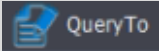
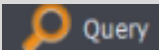


4. GV-IP Speaker Setting Kits

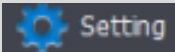

Download and install the GV-IP Speaker Setting Kits from our [download page](#).




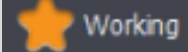

The controls in the window:

Function	Description
	Select one of network interface cards if installed.
Query To 	If you already know the IP address of the speaker, type its IP address in the left field and click Query to to find it in the network.
Query 	Find the IP address of the speaker, under the same LAN as the GV-IP Speaker Setting Kits and GV-Control Center.



<p>Setting</p> 	<p>When you click the Setting button, you will be prompted to enter Use and Password. By default, the Use ID is admin and the Password is admin123.</p> <p>[NormParam]</p> <ul style="list-style-type: none"> ■ DevID: The Device ID. ■ Dev Network Param Setting: Configure a fixed IP address for the speaker. Or select DHCP to have an IP address assigned by a DHCP server within the network. ■ Update IP: The option is used to update the firmware of the speaker. Enter the IP address of the PC used to update the firmware. ■ Confirm Verify: Enable to check any IP conflicts. ■ ReVal: Return factory default settings. ■ <p>[ONVIFParam]</p> <p>By default, the Use ID is admin and the Password is admin123. You can change both ID and Password.</p> <p>[SipParam]</p> <p>Connect a GV-IP Speaker to the SIP server. Use the SIP server to call the speaker and speak into the microphone installed on the SIP server in order to broadcast via the speaker.</p> <ul style="list-style-type: none"> ■ RegIp: Type the IP address of the SIP server. ■ RegPort: The port of the SIP server is 5060 by default. ■ Use: Type the ID number of the speaker as assigned on the SIP server. ■ Password: Type the password of the speaker as assigned on the SIP server. <p>[Setting]</p> <ul style="list-style-type: none"> ■ CompatProgram: Keep the compatible programs option turned OFF. ■ 1/PlayPriorityH, 1/PlayPriorityM, 1/PlayPriorityL: Set High, Medium and Low priorities to the protocols IP, SIP, ONVIF / RTSP. The default order of priority is IP, SIP, and ONVIF / RTSP.
<p>Pos</p> 	<p>Click the button to play a sample video through the speaker.</p>



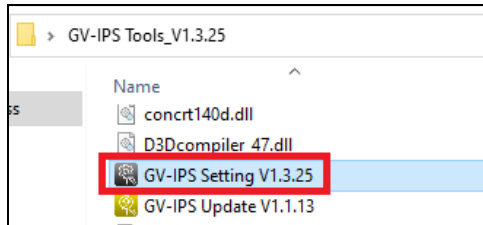
<p>Update</p> 	<p>To update the speaker firmware, see <i>4.2 Updating the Firmware</i>.</p>
<p>Working</p> 	<p>Change the Run Mode of the speaker from BOOT to RUN.</p>
<p>Reset</p> 	<p>Restart the speaker.</p>
<p><input checked="" type="checkbox"/> BCastSend</p>	<p>Enable this option to use the broadcasting method to set up a speaker when the speaker and the computer used for configure it are on different network segments.</p>
<p><input checked="" type="checkbox"/> MachID</p>	<p>Machine ID. Enable BCastSend and MachID for speaker configurations when two speakers have the same IP address.</p>



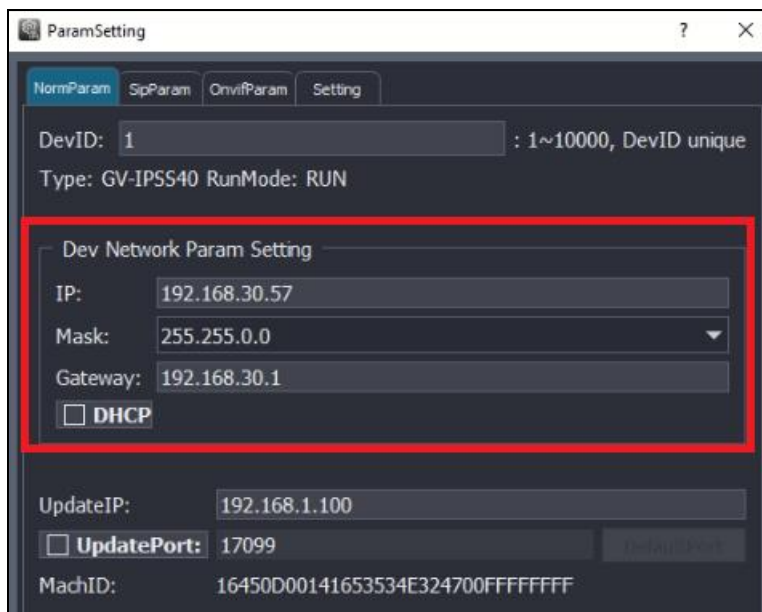
4.1 Changing the IP Address

To change the IP address of a speaker, follow the steps below:

1. Run **GV-IPS Setting**.



2. Click **Query** to detect speakers on the same LAN.
3. Select a speaker in the list.
4. Click **Setting**. You are prompted to enter the ID and password of the speaker.
5. Change the speaker's IP settings. Click **OK**.

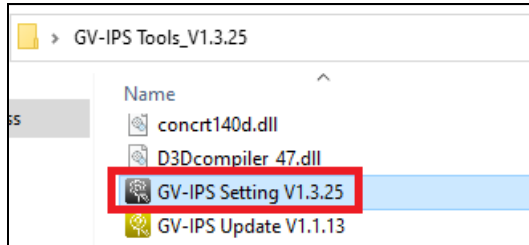


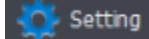


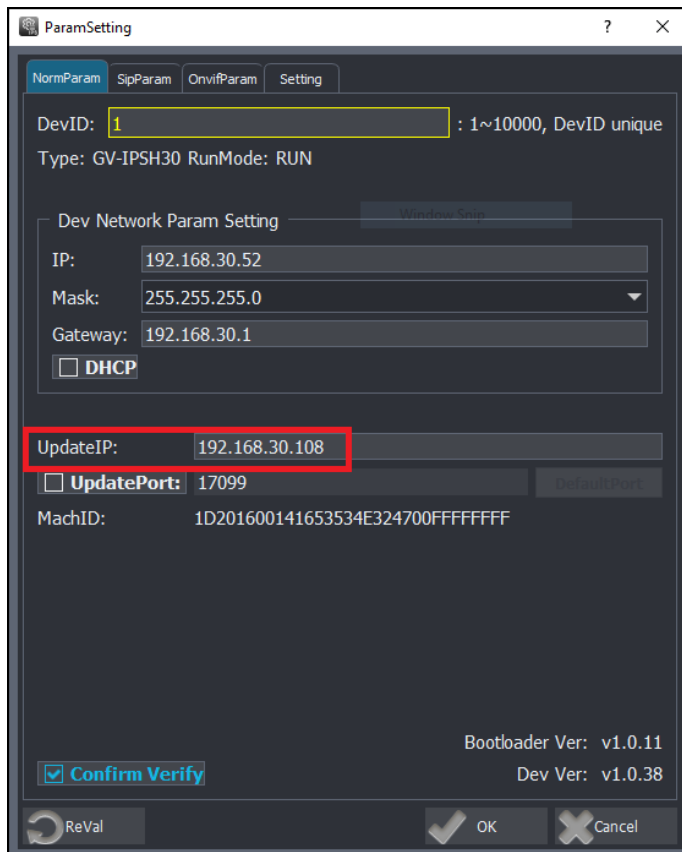
4.2 Updating the Firmware

To update the speaker's firmware, follow the steps below:

1. Run **GV-IPS Setting**.

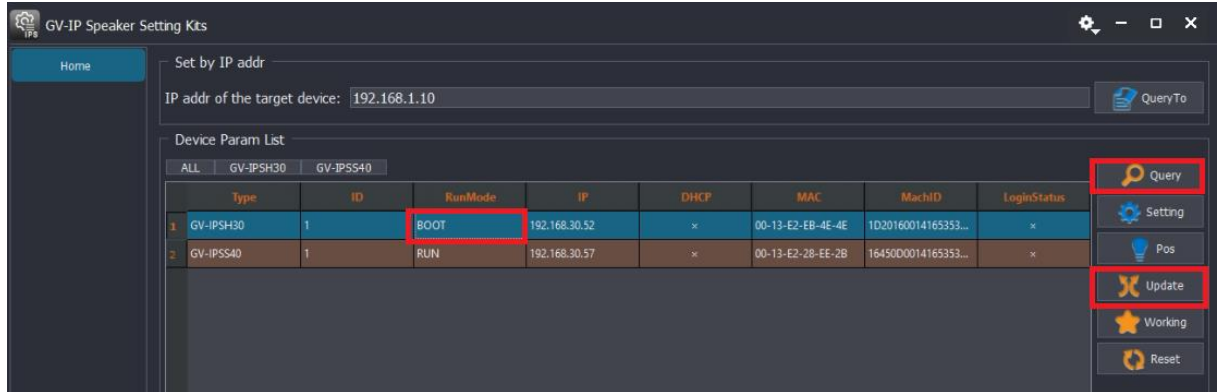


2. Click **Query** to detect speakers on the same LAN.
3. Select a speaker in the list.
4. To specify the IP address of the PC used to upgrade firmware, click  and type the IP in the **Update IP** field.



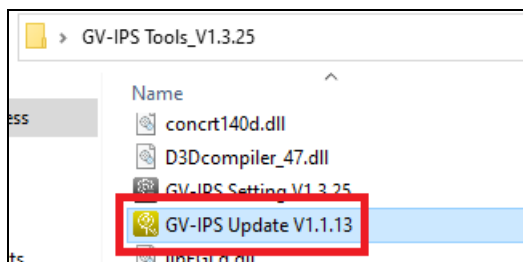


- To connect the speaker to the PC used to update the firmware, click **Update**, enter the speaker's ID and password, and then click **Query**. The Run Mode of the speaker in the list changes from RUN to BOOT.

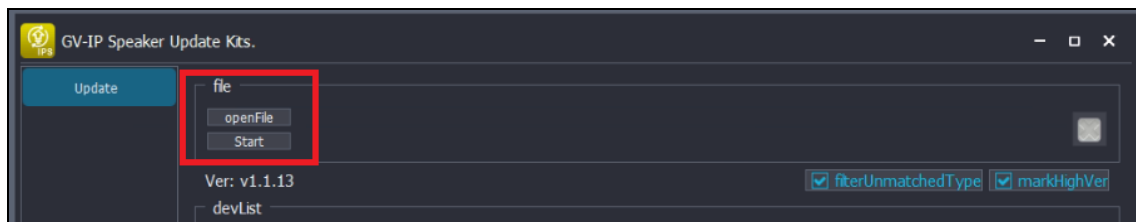


Note: If the speaker disappears from the list after you click **Update**. Wait a minute and then click **Query** to detect it again.

- Run **GV-IP Speaker Update Kits**.

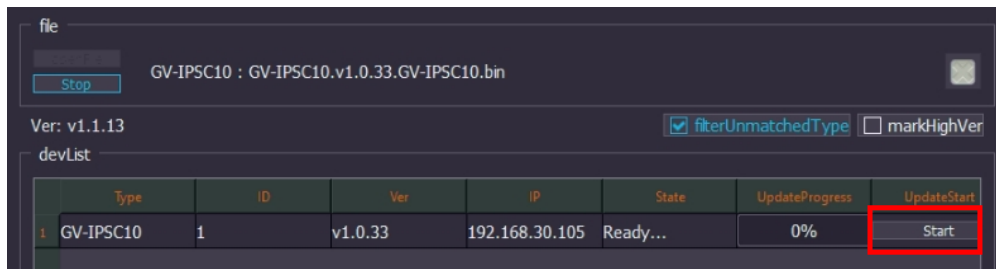


- Click **Open File** to locate a firmware file.
- Click **Start** to search for speakers in BOOT mode.






- C、 Select a speaker in the list
- D、 Click **Start** to start firmware upgrade.



On the **GV-IP Speaker Update Kits** user interface:

- **filterUnmatchedType**: When the option is enabled, only search for speakers with the same firmware versions.
- **markHighVer**: When the option is enabled, it will detect new firmware version available, and display the message “Higher version”.

1	GV-IPSC10	1	v1.0.33	192.168.30.105	Higher version
---	-----------	---	---------	----------------	----------------

IMPOPTANT: If a speaker's Run Mode is set to **BOOT**, the connection to the speaker is terminated. To change the Run Mode from **BOOT** to **RUN**, select the speaker from the list and click **Working** .
