

# Z-MAX® 6A UTP Patch Panels

Regional Availability - Global

Z-MAX patch panels provide outstanding 10 Gb/s performance and aesthetics in a high-density, modular UTP solution. The Z-MAX UTP panels provide rapid and reliable installation by accelerating module mounting, and cable tie-down operations. In addition to traditional 24 port / 1U flat and angled versions, the Z-MAX UTP panels are also available in 48 port / 1U configurations to permit high density installations.

## High-Density

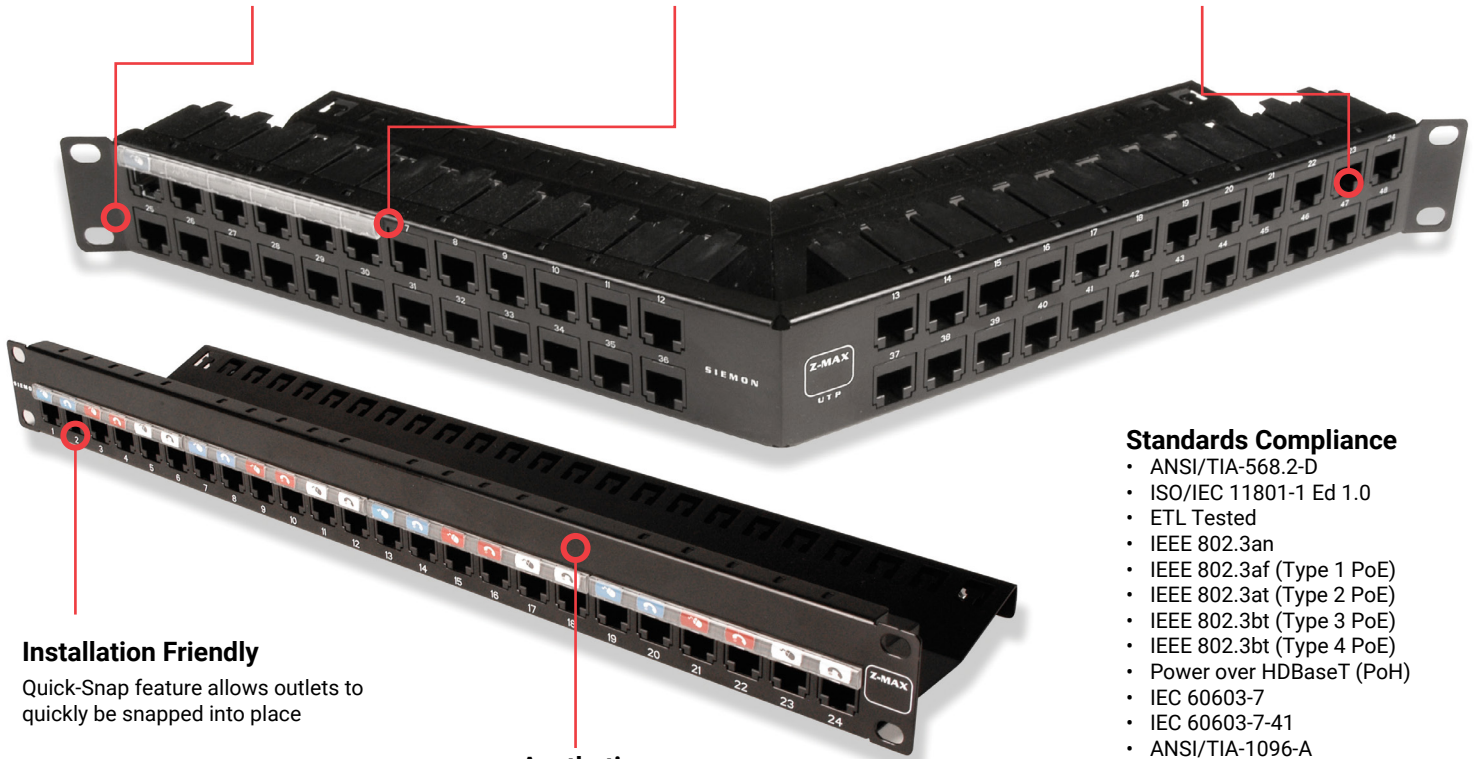
Provides 48 ports in just 1U while still meeting strict Category 6A Alien Crosstalk Parameters

## Port Identification

High visibility magnifying labeling system enables quick identification of outlets

## Durable

High strength steel with black finish and scratch/fade resistant port marking



## Installation Friendly

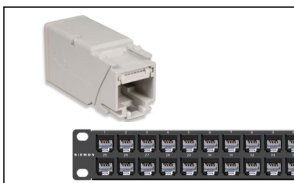
Quick-Snap feature allows outlets to be quickly be snapped into place

## Aesthetics

The Z-MAX panel provides a clean front surface to improve the installation appearance

## Standards Compliance

- ANSI/TIA-568.2-D
- ISO/IEC 11801-1 Ed 1.0
- ETL Tested
- IEEE 802.3an
- IEEE 802.3af (Type 1 PoE)
- IEEE 802.3at (Type 2 PoE)
- IEEE 802.3bt (Type 3 PoE)
- IEEE 802.3bt (Type 4 PoE)
- Power over HDBaseT (PoH)
- IEC 60603-7
- IEC 60603-7-41
- ANSI/TIA-1096-A



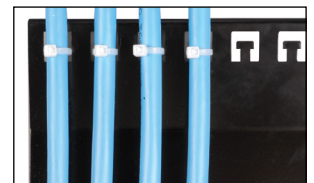
Panels available as complete kits including patch panel, Z-MAX panel outlets, and all necessary accessories. Empty panels are also available for use with Z-MAX trunk assemblies



A quick-release lever allows individual modules to be easily removed even in high density applications



Combine Z-MAX trunk assemblies (with preterminated panel outlets) and empty Z-MAX panels for rapid data center deployment.



Ensures proper cable management practices for all installations, critical to Category 6A performance.

