

Overview

These ProWire Unified Power wall mount models are single and dual voltage access power systems, precision wired for MERCURY controllers. ProWire enables the specification and installation of **standardized access power equipment** across an enterprise for uniform operation, maintenance and servicing.

The C4 or M8 control modules provide access control inputs capable of voltage or dry contact activation, and outputs programmable for failsafe / failsecure operation at either 12 or 24 VDC and controlled by the power supply fire alarm interface. The D8 module provides (8) auxiliary outputs. In dual voltage systems, each output is configurable for 12 or 24VDC operation.

ProWire Unified Power enclosures are painted steel with removable backplate, lock, keys and and tamper switch and come 100% factory tested – ready for final panel installation and field wire termination.

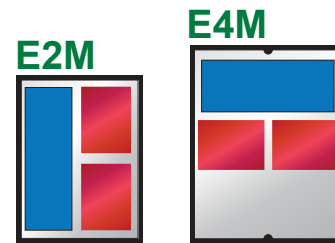


FP075-B100M8PNL4E2M/T4-A
 Managed Power System
 E2M enclosure, A-Wired Tie Wrap

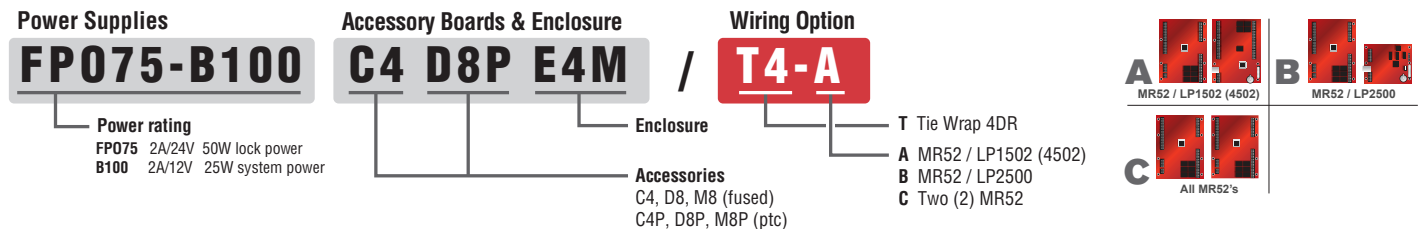
Product Features

- Pre-installed wire harness for panel power, lock control, faults and tamper switch
- Point to point wiring; labeled, color coded, twisted pair, shielded communication
- Tie wrap or Panduit wire duct cable management options
- Managed systems monitor power, batteries and (8) eight outputs
- UL294, ULC S319 joint LSP / Mercury integrated listing

Enclosure Styles



Model Nomenclature



| *Model Number | Model Wiring Options | | | System Type | Distributed Outputs Auxiliary and Control | Enclosure / Cable Mgmt H x W x D (inches) |
|---------------|----------------------|------|------|-------------|--|--|
| | T4-A | T4-B | T4-C | | | |

Dual Voltage - 2A/12V and 2A/24V


| | | | | | | |
|--------------------------|------|------|------|-----------|-----------------------------|---|
| FP075-B100C4D8PE2M/T4-A | T4-A | T4-B | T4-C | Standard | 8 auxiliary, 4 lock control | E2M 20 x 16 x 4.5 Tie Wrap |
| FP075-B100M8PNL4E2M/T4-A | T4-A | T4-B | T4-C | Networked | 8 managed | |
| FP075-B100C4D8PE4M/T4-A | T4-A | T4-B | T4-C | Standard | 8 auxiliary, 4 lock control | E4M 24 x 20 x 6.5 Tie Wrap |
| FP075-B100M8PNL4E4M/T4-A | T4-A | T4-B | T4-C | Networked | 8 managed | |

Single Voltage - 6A/12V (3A/24V)

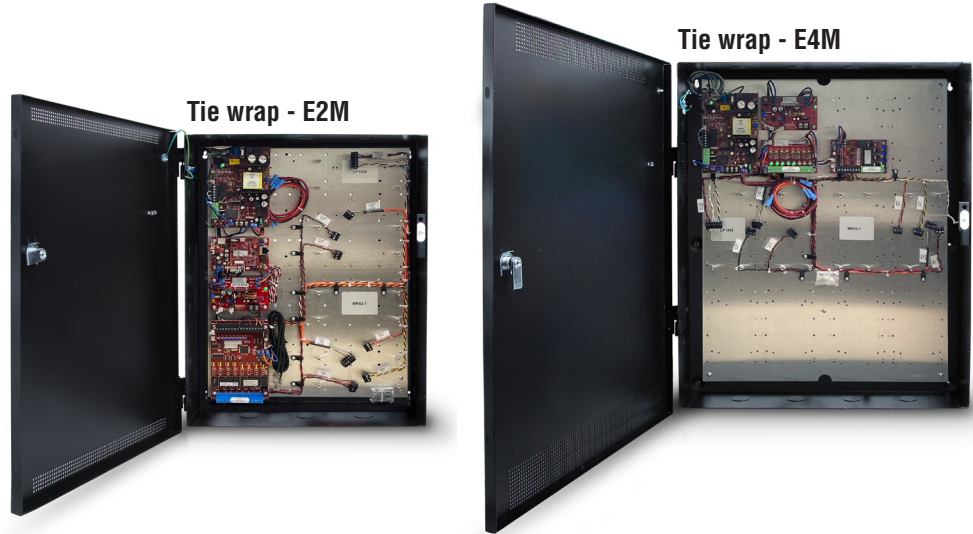
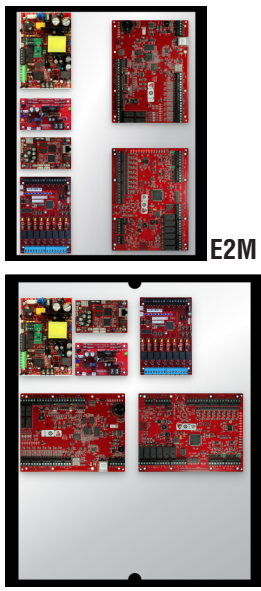
| | | | | | | |
|----------------------|------|------|------|-----------|-----------------------------|---|
| FP075-C4D8PE2M/T4-A | T4-A | T4-B | T4-C | Standard | 8 auxiliary, 4 lock control | E2M 20 x 16 x 4.5 Tie Wrap |
| FP075-M8PNL4E2M/T4-A | T4-A | T4-B | T4-C | Networked | 8 managed | |
| FP075-C4D8PE4M/T4-A | T4-A | T4-B | T4-C | Standard | 8 auxiliary, 4 lock control | E4M 24 x 20 x 6.5 Tie Wrap |
| FP075-M8PNL4E4M/T4-A | T4-A | T4-B | T4-C | Networked | 8 managed | |

*Model wiring option "T4-A" calls out A wired tie wrap. Modify model number to order other options, i.e., FP075-B100C4D8PE2M/T4-C (C wired tie wrap)

System Specifications

| | | |
|--|---|---|
| Power Supplies | FP075 | Power supply board, 2A/24V |
| | B100 | Secondard voltage module, 2A/12V class 2 power limited Input 120/230VAC 50/60Hz 83 Watts (0.69A) Overload and short circuit protection Over temperature protection Polarized AC power supply disconnect |
| Battery Charging | Independent built-in charger for sealed lead-acid or gel type batteries Microprocessor dual rate charging of 12 or 24V battery sets Automatic switchover to standby battery when AC fails Zero voltage drop when switched over to battery backup | |
| Supervision | AC Fault (form "C" contacts) System Fault (form "C" contacts) System Fault conditions: Low or no battery short to earth ground power supply failure | |
| Distribution Modules | D8P | 8 auxiliary outputs, class 2 power limited at 2.5A per output |
| | C4 | 4 relay lock control outputs, fused at 3A per output |
| | M8 | 8 relay managed outputs, fused at 3A per output |
| Network Management | NL4 | Four port module. Monitors and reports power supply status. Tests and reports battery health status. |
| | M8 | Monitors eight (8) individual outputs. Remote reset each output. Set window thresholds for voltage & current. |
| Enclosures | E2M | Size: 20.00H x 16.00W x 4.50D in. (51.00 x 41.00 x 11.50 cm) Weight: 20 lbs. |
| | E4M | Size: 24.00H x 20.00W x 6.50D in. (61.00 x 50.00 x 16.50 cm) Weight: 28 lbs. |
| Wiring Suffix | T4-A | T = Tie Wrap 4 = Door count A = MR52 / EP1502 |
| | T4-B | T = Tie Wrap 4 = Door count B = MR52 / LP2500 |
| | T4-C | T = Tie Wrap 4 = Door count C = All MR52s |
|  | | |
| Regulatory Compliance | USA/Canada | UL294, UL1076 ULC S319 CSA C22.2 #107.1 FCC Part 15 CSFM |
| | International | CE: IEC 62368-1:2014, EN55032:2015, EN61000-3-2:2014, EN61000-3-3:2013, EN55024:2010 +A1:2015 India BIS IS13252(Part1):2010 Mexico NOM 001:2018 |

Board Locations / Wiring Examples



LifeSafety Power, Inc.
 899 E Park Avenue
 Libertyville, IL 60048 USA
 (888) 577-2898
 info@lifesafetypower.com
 P01-1018A 05/21

LifeSafety Power warrants to the original purchaser only that all products will be free from defects in material or workmanship at time of shipment. This warranty is non-transferable. Our obligation under this warranty is limited to repair or replacement, at the sole discretion of LifeSafety Power, of products that are defective in material or workmanship at the time of shipment provided they were used within the specified ratings and installed in accordance with accepted engineering practices. Products in the Unified Wired Systems Classification will be wired to the LifeSafety Power description of operation unless otherwise stated. At the time of installation it is the obligation of the purchaser or final installer to verify that all wired terminations provide the desired operation. In no event shall LifeSafety Power be responsible for any special, incidental or consequential damages even if LifeSafety Power has been advised of the possibility of such damages. Customer hereby agrees to indemnify LifeSafety Power for and hold LifeSafety Power harmless from and against any and all loss, cost or expense (including reasonable attorneys' fees) directly or indirectly related to any claim with respect to Unified Wired™ systems classification products except to the extent any such claim shall result from the gross negligence or willful misconduct of LifeSafety Power.