



# PTZ211

## 12X HD AI PTZ Camera

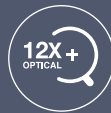


# Capture Your Events in True-to-life Video Quality with AI!

The AVer PTZ211 12X HD AI PTZ Camera is our latest generation of PTZs to offer the best image quality, video streaming support and AI functionality. The camera offers 12X optical zoom, HD resolution, 2MP picture with 60fps and simultaneous output of USB/IP/HDMI/3G-SDI. The PTZ211 includes a number of impressive upgrades from the previous generation PTZ310W, including new improved performance, USB 3.0, a tally light to identify the active camera, and two IR sensors for reliable operation. The camera also includes a ceiling mount and is SRT Ready to optimize video streaming performance across unpredictable networks. Built-in AI functions provide preset content areas or adjust FOV to capture everyone on screen. Includes the 5 year AVerCare warranty for peace of mind.



HD Resolution



12X Optical Zoom



4 Multi-Stream Capability



Supports PoE+



2MP Picture

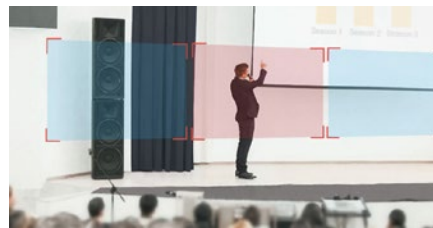


AI Functions



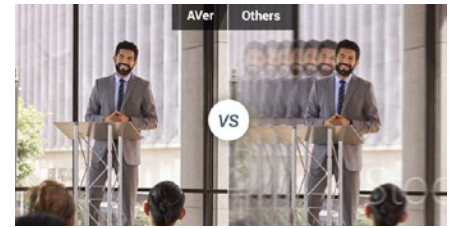
## Multi-Stream Capability

- Simultaneous output support from all ports, USB/IP/HDMI/3G-SDI.



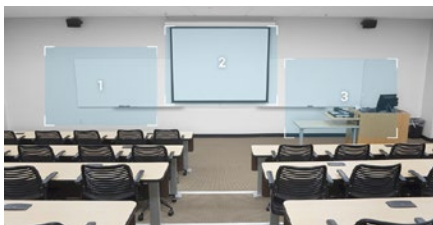
## Seamless Content Capture with SmartShoot AI Functions

- Optimize your camera controls for automatic content capturing between preset areas
- Create a multi-camera feel across all your preset zones
- Save time and effort with a variety of shooting ranges



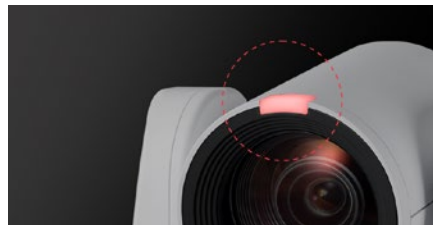
## Advanced Motion Control

- Achieve precise camera movement during recording
- Pan/tilt rotation maneuvers as small as 0.1° per step and as fast as 200°
- Customizable speed controls allow you to optimize your recording



## Prepare for Any Angle

- Up to 256 different preset locations through VISCA via RS232 and RS422 functionality
- Simplified IR remote and the ability to set 10 preprogrammed preset locations
- Easy manual control of the recording view with outstanding preset locations



## Tally Light

Simplify multi-camera live video productions with an illuminated red light on the active camera.



## Free Software for Users and AV Managers

Whether you need a simple tool to control your PTZ or TR camera, or manage over a hundred on your network, AVer has great options. [CaptureShare](#) and [PTZ Management for desktop and AVer PTZ Control Panel for iPad](#) have you covered. For new voice tracking features, look to [PTZ Link](#). Visit our [support page](#) for easy download of our desktop software.



## Compatible Software

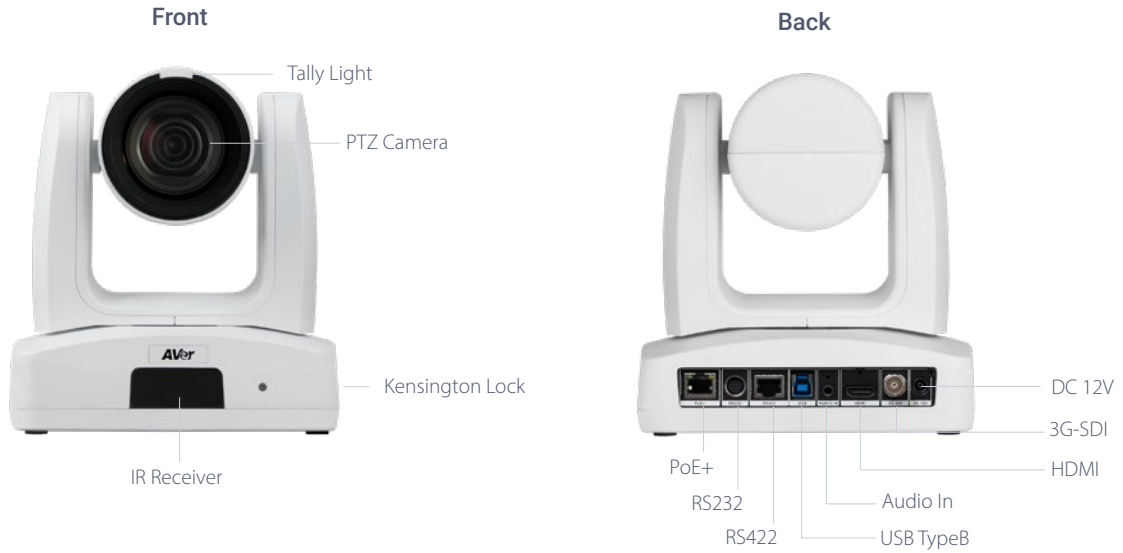


## Product Specifications

PTZ211			
<b>Camera</b>	Image Sensor	1/2.8" Full HD Exmor CMOS	
	Effective Picture Elements	2 Megapixels	
	Output Resolutions	1080p/60, 1080p/59.94, 1080p/50, 1080p/30, 1080p/29.97, 1080p/25, 1080i/60, 1080i/59.94, 1080i/50, 720p/60, 720p/59.94, 720p/50	
	Minimum Illumination	0.46 lux (IRE50, F1.6, 30fps)	
	S/N Ratio	> 50dB	
	Gain	Auto / Manual	
	TV Lines	1000 (Center/Wide)	
	Shutter Speed	1/1 to 1/32,000 sec	
	Exposure Control	Auto, Manual, Priority AE( Shutter, IRIS), BLC, WDR	
	White Balance	Auto, Manual, ATW, One Push	
	Optical Zoom	12X	
	Digital Zoom	1X	
	Viewing Angles	DFOV : 69.2° (Wide) to 2.8° (Tele), HFOV : 62.3° (Wide) to 2.5° (Tele), VFOV : 37.3° (Wide) to 1.4° (Tele)	
	Focal Length	f = 4.5 mm (Wide) to 135 mm (Tele)	
	Aperture (Iris)	F = 1.8 (Wide) to 4.7 (Tele)	
	Minimum Working Distance	0.1 m (Wide), 1.2 m (Tele)	
	Pan / Tilt Angles	Pan : ±170°, Tilt : +90° / -30°	
	Pan / Tilt Speed (Manual)	Pan : 0.1° to 100° / sec, Tilt : 0.1° to 100° / sec	
	Preset Speed	Pan : 200° / sec, Tilt : 200° / sec	
	Preset Positions	10 (IR), 256 (RS-232, RS-422, IP)	
Camera Control - Interfaces	RS-232 (DIN8), RS-422 (RJ45), IP		
Camera Control - Protocols	VISCA (RS-232 / RS-422 / IP), PELCO-D & PELCO-P (RS-232 / RS-422), CGI (IP)		
Image Processing	Noise Reduction (2D / 3D), Flip, Mirror		
Power Frequencies	50 Hz, 60 Hz		
<b>AI Functions</b>	Modes	SmartShoot, SmartFrame	
	Audio - Channel	2ch Stereo	
	Audio - Codec	AAC-LC	
<b>Interface</b>	Video Outputs	3G-SDI, HDMI, IP, USB	
	Audio Outputs	3G-SDI, HDMI, IP, USB	
	Audio Input	MIC in, Line in	
<b>General</b>	Power Requirement	AC 100 - 240V to DC 12V/2A	
	Power Consumption	19W	
	PoE	PoE+	
	Dimensions (W x H x D)	180.0 x 192.0 x 145.0 mm	
	Net Weight	2.0 (±0.1) kg	
	Application	Indoor	
	Tally Light	Yes	
	Security	Kensington Slot	
	Remote Control	Infrared	
	Operating Conditions	Temperature : 0 °C to +40 °C ; Humidity : 20% to 80%	
	Storage Conditions	Temperature : -20 °C to +60 °C ; Humidity : 20% to 95%	
	<b>IP Streaming</b>	Resolution	1080p60
		Network Video Compress Formats	H.264, H.265, MJPEG
Maximum Frame Rate		1080p60	
Bit-Rate Control Modes		VBR, CBR (selectable)	
Range of Bit-Rate Setting		512 Kbps to 120 Mbps	
Network Interface		10 / 100 / 1000 Base-T	
Multi-Stream Capability		4 - All Active Streams: IP, USB, HDMI, 3G-SDI	
Network Protocols		IPv4, TCP, UDP, ARP, ICMP, IGMP, HTTP, HTTPS, DHCP, RTP / RTCP, RTSP, RTMP, SRT, HLS, NDI, LLDP	
NDI™HX3 Capability	N/A		
<b>USB</b>	Connector	USB 3.0 Type-B	
	Video Formats	MJPEG, YUY2	
	Maximum Video Resolution	1080p60	
	USB Video Class (UVC)	UVC 1.1	
	USB Audio Class (UAC)	UAC 1.0	
<b>Web UI</b>	Live Video Preview	Yes	
	Camera PTZ Control	Pan, Tilt, Zoom, Focus, Preset Control	
	Camera / Image Adjustment	Exposure, White Balance	
	Network Configuration	DHCP, IP Address, Gateway, Subnet Mask, DNS	

<b>Software Tools</b>	IP Search and Configuration Tool	Support Windows® 7 or later
	PTZ Management	Support Windows® 7 or later
	PTZ Control Panel	Supports iOS & iPadOS® 11 or later
	PTZ Link	Supports Windows® 7 or later, macOS® 10.14 or later
	OBS Plugin for PTZ Cameras	Supports Windows® 8 or later, macOS® High Sierra v10.13 or later
	CaptureShare	Supports Windows® 7 or later, macOS® 10.14 or later
<b>Warranty</b>	Camera	5 Years
	Accessories	1 Year
<b>Package Contents</b>	Camera, Drilling Paper, Ceiling Mount Bracket (x2), Quick Start Guide, Cable Fixing Plate, M2 x 4 mm Screw (x3), Power Adapter & Power Cord, 1/4"-20 L=6.5 mm Screw (x2), Remote Control, M3 x 6 mm Screw (x3), DIN 8 to D-Sub 9 Cable, RS-232 In/Out Y Cable, Cable Ties (x4), HDMI Cable (x1)	
<b>Optional Accessories</b>	AVer CL01 PTZ Camera Controller, L-Type Ceiling Mount	
<b>Ordering Info</b>	Part Number	PAPTZ211W

## Hardware Specifications



**AVer Information Inc. Americas**  
 668 Mission Court, Fremont, CA 94539  
 Toll free 1.877.528.7824 T 408.263.3828 F 408.263.8132

©2023 AVer Information Inc. All rights reserved.  
 All brands and logos are trademarks of their respective companies. Specifications subject to change without notice.

[pro.averusa.com](http://pro.averusa.com)