

WAVE

OSP ENCLOSURES



Outside Plant Enclosure Solutions
for the Connected Home

www.primex.com

primex 

WAVE

FLEXIBLE, RELIABLE, IN-STOCK SOLUTIONS TO FIT YOUR NEEDS

Whatever the scale and complexity of your network installations, Primex' in-stock Fiber and Copper Solutions help you manage today's OSP infrastructure challenges.

High-grade, UV-protected, engineered plastic made in the US and Canada for secure, long-lasting protection in demanding weather conditions.

OSP ENCLOSURE CATEGORIES

Base Enclosure (ENC)
Blank enclosures with standardized mounting hole pattern for the custom configurations.

Fiber Splice Enclosure (FSE)
Enclosures with integrated accessories for managing the splicing and storage of fiber.

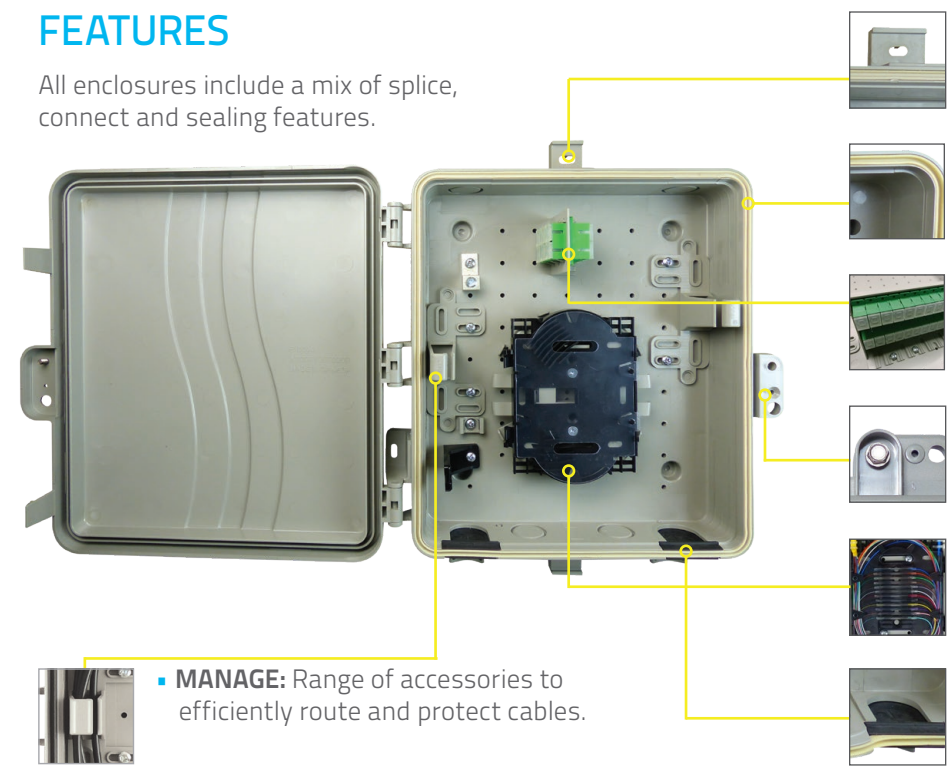
Fiber Splice & Connect (FSC)
Enclosures with splice storage and adapters for the connection and management of fiber.

Fiber Cross-Connect (FCC)
Enclosures that include fiber adapters and cable management to provide a simple transition point.



FEATURES

All enclosures include a mix of splice, connect and sealing features.



- **MOUNT:** Wall and pole mounting brackets for quick and easy deployment.
- **RELY:** UL-listed, NEMA-rated, sealed gasket and industry-standard mounting hole pattern.
- **CONNECT:** Standardized with simplex or duplex SC/APC fiber connectors.
- **SECURE:** Snap lid and hex bolt (F81 for copper) provides secure access 24/7.
- **SPLICE:** Fiber splice holders (Tray, FTC, FTO) to route and secure fiber.
- **IN/OUT:** 3/4" to 1" ports with grommets for protected cable entry and exit.

▪ **MANAGE:** Range of accessories to efficiently route and protect cables.

- **SIZE:** A range of sizing options for different applications and storage requirements.



P250FSC-H1SA	P500FCC-XHG1SA	P700FCC-XHG1SA	P700FSC-THG1SA	P750FSC-OHG1SA	P1000MFSC-CHG1SA	P250FCC-XHX2SA	P500FSC-THG2SA	P700FCC-XHG2SA	P750FCC-XHG2SA		
125-0877	125-1707	125-1690	125-1691	125-1086	125-1344	125-1253	125-1346	125-1692	125-1698		
1 Fiber						Up to 2 Fibers					
Economical single FTTH splice/connect where space is limited.		Small footprint single FTTH cross-connect with room for slack.		Low profile brownfield FTTH cross-connect with back access port.		Low profile FTTH splice/connect where flat drop is required.		Mid-size FTTH splice/connect scalable for additional drop fiber.		Large single FTTH splice/connect with multi-use scalability.	
Manufactured home, SFU		SFU, MTU		Retrofit SFU, MTU		SFU, MTU		SFU, 2-plex, MTU		SFU, MTU, Multi-play	
P700FSC-OHG4SA	P750FSC-THG6SA	P750FCC-XHG6SA	P1000MFSC-THG6SA	P1000MFSC-THG12SASD	P1000MFSC-THG24SASD	P1500FSE-THG	P1500FSC-THG24SA	P136ENC-XFX	P138ENC-XFX		
125-1693	125-1650	125-1697	125-1345	125-1700	125-1701	125-1502	125-1708	125-0409	125-0465		
Up to 4 Fibers		Up to 6 Fibers			Up to 12 Fibers		Up to 24 Fibers		Copper/Coax		
Low profile four FTTH splice/connect where space is limited.		Mid-size six FTTH splice/connect where multiple drops are required.		Mid-size six FTTH cross-connect with ample slack storage.		Large FTTH splice/connect scalable for up to six lines.		Mid-size FTTH splice/connect with fiber protecting service divider.		Mid-size FTTH splice/connect with fiber protecting service divider.	
4-plex		Small MDU, MTU		Small MDU, MTU		Small MDU, MTU		Medium MDU		Medium/Large MDU	
Large MDU		Medium MDU, MTU		Medium MDU		Medium MDU		Medium MDU		Small MDU	

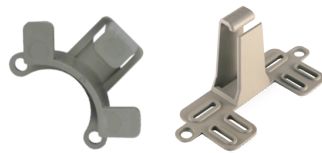
Contact Primex to learn more about our extended line and customized solutions | www.primex.com | 1.877.881.7875

Cable Management Clips and Cradles

Durable, multi-purpose accessories that provide quick, secure routing of cabling.

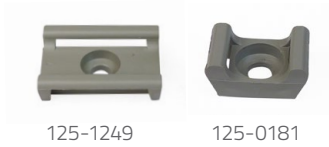
Primex offers a range of clips to tie down, route and protect the bend radius of fiber.

Part #	Description
125-0237	Grey cable clip (Hurricane) P108
125-0181	P108
125-1710	Corner Clip 4/bag
125-1249	UMTCKIT 50/bag



125-1710

125-0237



125-1249

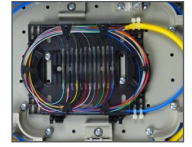
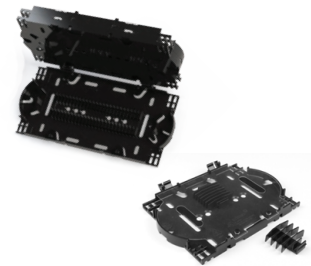
125-0181

Fiber Splice Tray 12, 24, and Universal Splice Trays

Secure, efficient management of 12-24 fibers within Primex Wave enclosures.

Easily stacked and scalable, these sturdy trays protect fiber bend radius across a range of splicing applications and are ideal for MDU's

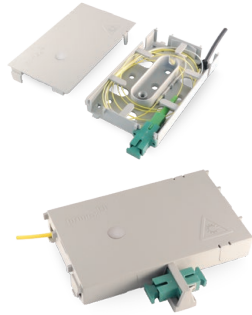
Part #	Description
125-1520	Fiber Splice Tray, 12 Fiber
125-1521	Fiber Splice Tray, 24 Fiber
125-1620	Universal Fiber Splice Tray (mechanical, fusion, ribbon)



FTC Fiber Transition Case

Efficient and adaptable solution for storing up to 3' of fiber drop cable and a simplex connector. The FTC is ideal for test points, FTTH, and repair splices.

Part #	Description
125-0848	Grey FTC w/screw cap
125-0850	Grey FTC w/adaptor mount

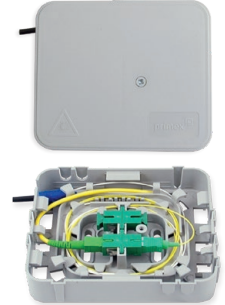


FTO Fiber Transition Outlet

Quick-splice solution that manages up to 3' of fiber drop cable.

This compact transition outlet offers flexible entry ports and integrated dual fusion splice tray with room for two adapters and buffer tube management.

Part #	Description
125-0891	FTO Grey w/Splice Tray



Fiber Multi-Port Drop Cable Enclosure Ports

Easy-to-install lay-in grommet that seals out dust and rodents from enclosures.

Ideal for multiple drops from either a splitter or splice, the Multi-Port runs from 1-8 fibers between 2mm - 4.3mm.

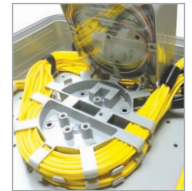
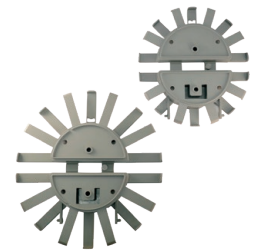
Part #	Description
125-1012	Multi-port - 8 fiber
125-1025	Multi-port - 1 fiber
125-1026	Multi-port - 2 fiber (3mm)
125-1027	Multi-port - 2 fiber (4.3mm)
125-1028	Multi-port - 4 fiber (3.8mm)
125-1029	Multi-port - 6 fiber
125-1038	Multi-port - 4 fiber (2mm)



Spider Spool Fiber Management Spool

Routes, manages and stores fiber up to 3mm. Available in two sizes, it protects cable bend radius and is stackable and scalable. A hinged option available for mounting and accessing splice trays.

Part #	Description
125-0929	Spool 3" - Short Legs
125-0930	Spool 3" - Long Legs



[Contact Primex to learn more about our extended line and customized solutions.](#)

OSP Solutions for the Connected Home

Today's connected homes are broadband based, and Primex has what you need to move it inside.



www.primex.com

1.877.881.7875 or 1.604.881.7875