



**COMPLETE FIRE DETECTION  
AND NOTIFICATION SOLUTIONS**



# INTELLIGENT FIRE ALARM & AUDIO NETWORK SOLUTION



## THE MOST VERSATILE AND POWERFUL SYSTEMS IN THE INDUSTRY.

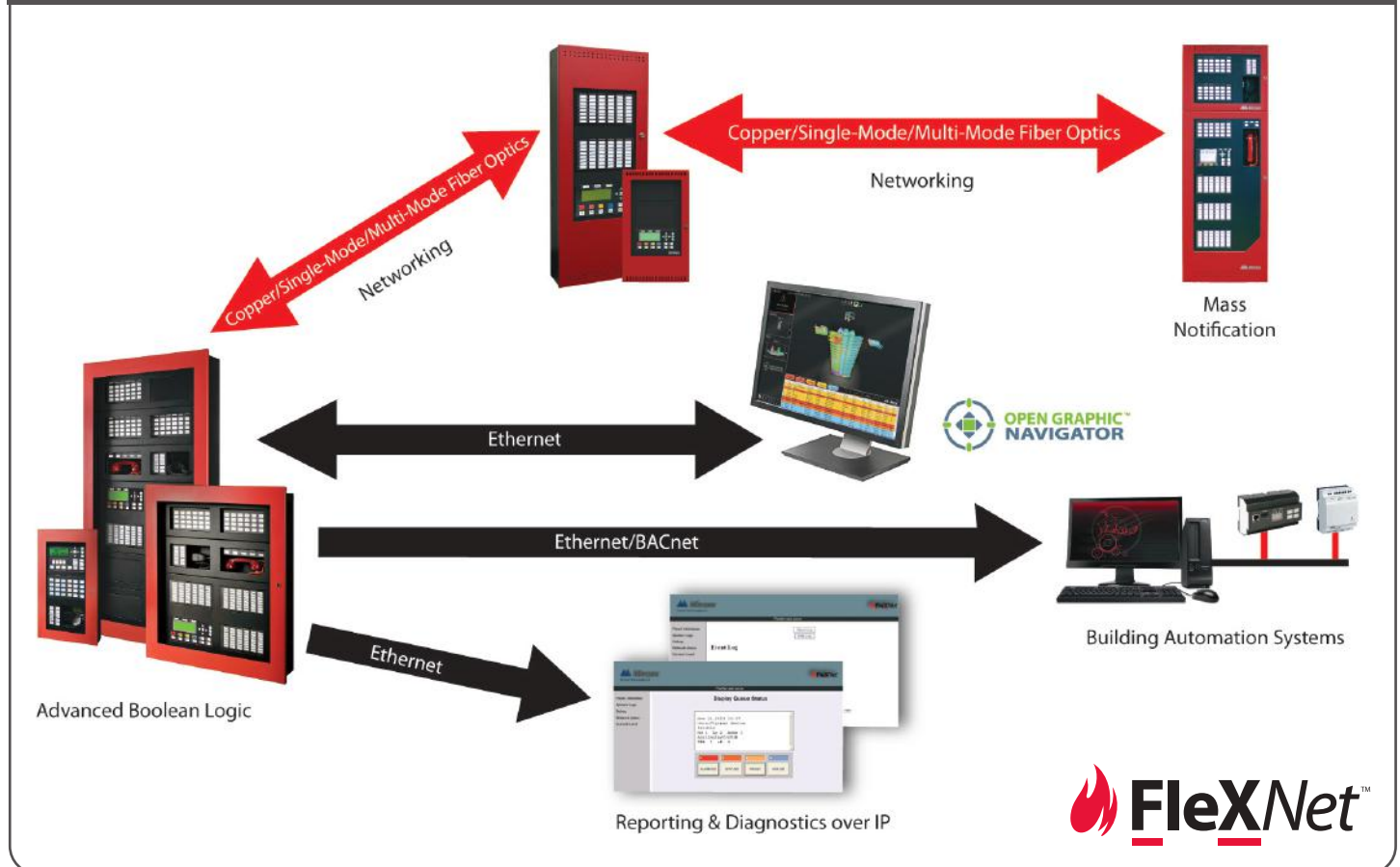
Mircom's Flex-Net Series is a powerful intelligent networkable fire alarm solution designed for medium to large-scale facilities. Flex-Net offers system designers many levels of flexibility to specify the ideal application of detection, control, notification and emergency communications. Features such as fire detection & alarm, audio/voice evacuation, BACnet, Boolean logic, networking and graphical work stations allow this modular solution to accommodate the simplest systems up to the most complex solutions.

With the addition of the Advance Protocol (AP), Fire/CO detection and 520 Hz support on both the addressable loop and through the audio/voice evacuation, Mircom's Flex-Net is poised to take you even further into the future with expanded capabilities.

- Advanced Protocol (AP)
- Fire/CO support
- 520Hz support
- Audio/Voice Evacuation
- Boolean Logic
- Open Graphic Navigator
- HVAC Fan and Damper Control
- Building Management Systems (BMS)
- Multiple System Configurations Supported
- 63 Nodes per System
- Copper Single Mode or Multi-Mode Fiber Optic Networking



## FLEX-NET MASS NOTIFICATION COMMUNICATION FLOW





# FR-320NETK

## INTELLIGENT FIRE ALARM & EMERGENCY COMMUNICATIONS NETWORK WITH RELEASING

NYC  
Fire Dept.



- Adds releasing capability to Mircom's Flex-Net system based upon FR-320 Releasing panel
- Permits pre-release, abort, manual release, and reset control
- Built-in Addressable loop which supports Classic Loop Interface Protocol (CLIP) and Advanced Protocol (AP) addressable devices
- Each SLC is capable of supporting 99 CLIP/159 AP Analog Sensors and 99 CLIP/159 AP Addressable Modules which can be wired in Style 6 or 7 (Class A) or Style 4 (Class B). Mixed loop can have up to 99 CLIP sensors and 99 CLIP modules but balance must be AP
- Base system is equipped with one Intelligent Signaling Line Circuit (SLC/CDL). Expandable to 21 SLCs
- Tamper resistant enclosures
- Password protected features for enhanced access control
- Local and remote placement of controls and indicators
- Visible notification and strobes support
- Large LCD displays
- Building Management System Interface (BMSI)
- Fire Alarm Control Panel Interface (FACI)
- Four Style Z/Y (Class A/B) Notification Appliance Circuits rated at 1.7 Amps each
- Built-in Ethernet port
- Remote diagnostics via a Built-in web server
- Up to 63 nodes



### COMPACT NETWORK PANEL

Up to 9 Intelligent Signaling Line Circuits (SLC) with up to 3 expansion modules



### MNS COMMAND CENTER AND AUDIO NETWORK NODE

Expandable to 21 Intelligent Signaling Line Circuits (SLC) with paging, telephone and allows for up to 180 watts per panel.



### EXTENDED COMPACT NETWORK PANEL

Expandable to 21 Intelligent Signaling Line Circuits (SLC) with up to 9 expansion modules, available in a variety of enclosures.



### AUDIO EXPANSION PANEL

Provides up to three audio expansion panels for an additional 1,080 watts of audio per node



### MID-SIZE NETWORK PANEL

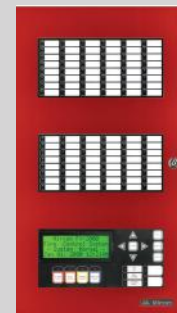
Expandable to 29 Intelligent Signaling Line Circuits (SLC) with up to 17 expansion modules.



### LOCAL OPERATING CONSOLE

Expandable to 7 Local Operating Consoles per panel. Annunciator consoles do not decrease node capacity.

## REMOTE ANNUNCIATORS



### REMOTE ANNUNCIATORS

Mircom LED and LCD annunciators are offered in a range of configurations to allow custom tailoring of wired or networked information & control center that is best for your application. Where other system manufacturers limit configurations of zone graphics, mode and by-pass switches and indicators, Mircom offers a custom solution that best suits your fire detection requirements.



### RAM-300LCD

Mircom RAM-300LCD remote annunciators are designed for use with FA-300 and FX-350 Series fire alarm panels and provide 2 by

20 line alphanumeric LCD display and control switches with access to common control menu functions.

Additional enclosure sizes available.



## FX-2000 SERIES INTELLIGENT FIRE ALARM CONTROL UNITS

The FX-2000 Series is ideal for residential, commercial, industrial, and institutional applications. The base system consists of one analog loop and four indicating circuits. In addition the base system supports conventional hard wired modules. With its flexible modular design, the FX-2000 Series can be configured to meet challenging requirements without compromising its easy installation and operation.



- SLCs are selectable for either class A (Style 6) or class B (Style 4) operation
- Four class A/B (Style Z/Y) indicating circuits with provisions for expansion
- Large 4 line by 20 character back-lit LCD display
- Sixteen-zone configurable LED annunciator
- Supports LCD, LED and graphic annunciation
- 198 addressable devices per SLC
- Base system supports 16 conventional hard wired modules with the provision to add more using the ALC-H16 Hard wire Loop Controller Module
- Three level password protection with field programmable definition which enables the installer to determine what functions are accessible for each password level
- Four Alarm Queues with selector switches and LEDs for Alarm, Supervisory, Monitor and Trouble
- 12 Amp power supply
- Correlatable Switch Inputs which allows for multi-functional outputs
- Auxiliary relay contacts for Common Alarm, Common Supervisory and Common Trouble
- RS-232 output for remote system printer or CRT
- Two logs track system event history (2000 events) and alarm event history (1000 events) which can be viewed on screen or sent to a printer for easy analysis and system maintenance
- Front Panel Auto-Configure and/or Computer laptop Programmable
- Common Control switches and/or indicating LEDs for System Reset, Signal Silence, Fire Drill, Acknowledge, General Alarm, Lamp Test, A.C. On, Pre-Alarm and Ground Fault
- Seamlessly integrates to the QX-5000 Voice Evacuation System
- UUKL listed for smoke control

## ANNUNCIATORS AND PROGRAMMABLE MODULES

### FX-2000 SERIES

The FX-2000 Intelligent Fire Alarm Control Units support programmable modules that can be connected either internally to the fire alarm unit or externally via the RAX-LCD Remote Shared Display. Connection to the RAX-LCD allows for unique configurations for a specific remote location.



### PROGRAMMABLE INPUT SWITCHES MODULE

#### IPS-2424DS

- 24 programmable switches
- Switches operate in a toggle operation
- Indicates status of disconnected zones

#### IPS-4848DS

- 48 programmable switches
- Switches operate in a toggle operation
- Indicates status of disconnected zones

### PROGRAMMABLE LED ANNUNCIATOR MODULE

#### RAX-1048TZDS

- 48 programmable bi-coloured LEDs

### FAN DAMPER CONTROL MODULES

#### FDX-008

- Individual programmed circuits for fan or damper control
- Three position selector switch for Off, On and Auto
- Supervised for operation
- UUKL listed for smoke control
- Graphic Driver modules available

#### FDX-008W

- Fan Damper Control Module with 8 three-position switches and 4 status LEDs per switch

#### FDX-008WKI

- Fan Damper Control Module with 7 three-position switches, 4 status LEDs per switch and a keyswitch input

### REMOTE SHARED DISPLAY

#### RAX-LCD

- Provides LCD annunciation
- Driver module for standard or reduced zone annunciation
- Driver modules for RAX-1048TZDS, FDX-008 and IPS-2424DS when mounted remotely



## FX-350 SERIES INTELLIGENT FIRE ALARM CONTROL UNITS

The FX-350 Series Intelligent Fire Alarm Control Panels support 60, 126 or 378 addressable points. Select models are available with a built-in UDACT/Digital Communicator. Easy to install and operate, the FX-350 Series is ideal for small to medium commercial, institutional and industrial occupancies.



- 2 line, 20 character back-lit LCD display
- Powerful 5 Amp dedicated power supply
- Four class B (Style Y) indicating circuits
- Select models include a 32 zone LED annunciator that can be expanded to 64 zones (32 alarm and trouble LEDs)
- Two event history logs – 200 events per log
- Configurable for two stage operation
- Configurable via the front panel, PC configurator, or remote dial up through the built-in modem (UDACT models)
- Software bypass groups
- Supports Photoelectric Sensors, Variable Heat Sensors and Multi-Sensor (Heat/Photo)
- Models available with an integrated UDACT/Digital Communicator
- Digital Communicator can be configured for DACT or UDACT mode of operation
- Built-in sync protocols for the following strobe manufacturers: Mircom, Amseco, System Sensor, Gentex, Faraday and Wheelock
- Relay contacts for Common Alarm, Auxiliary/Alarm (Disconnectable), Common Supervisory and Common Trouble
- Configurable Signal Silence Inhibit, Auto Signal Silence, Two Stage Operation and One-man walk test
- RS-485 Interface for Remote LED and LCD Annunciators
- Optional modules for additional internal relay circuits and City Tie/Polarity Reversal
- Optional trim ring for semi-flush mounting

FX and FA style fire alarm panels have three interchangeable means of being field programmed. 1) is from the front panel, 2) is from a local configurator tied to the panel and 3) is remotely over a telephone line. Plus all three are interchangeable in the sense that you can make a change on the front panel, upload to your local computer and make changes at home on that computer and send to the panel from home.

## INTELLIGENT FIRE ALARM DEVICES



### FX-2000/FLEX-NET SERIES INTELLIGENT DEVICES

To support the market-leading capabilities of FX-2000 Series control panels, Mircom FX-2000 Series analog addressable sensors, pull stations and modules are designed with advanced features, including sensitivity monitoring, selection and performance in any application.

### FX-350 SERIES INTELLIGENT DEVICES

Mircom offers a complete line of FX-350 addressable devices for any application. Analog addressable sensors include photoelectric, thermal and multi-criteria sensors. In addition, there are single and dual-action pull stations and addressable modules including monitor, output, relay and isolator models.



## INTELLIGENT POWER SUPPLIES

Intelligent NAC expander/power supplies are compatible with the FX-2000, FX-3500 and Flex-Net Series Intelligent fire alarm control panels. The units can extend the power capabilities of existing notification appliance circuits as well as provide power for other ancillary devices. In addition, Mircom power supplies have the ability to operate with any UL/ULC Listed 24 VDC conventional fire alarm control panel to provide Notification Appliance Circuit expansion.



## FX-3500 SERIES INTELLIGENT FIRE ALARM CONTROL UNITS



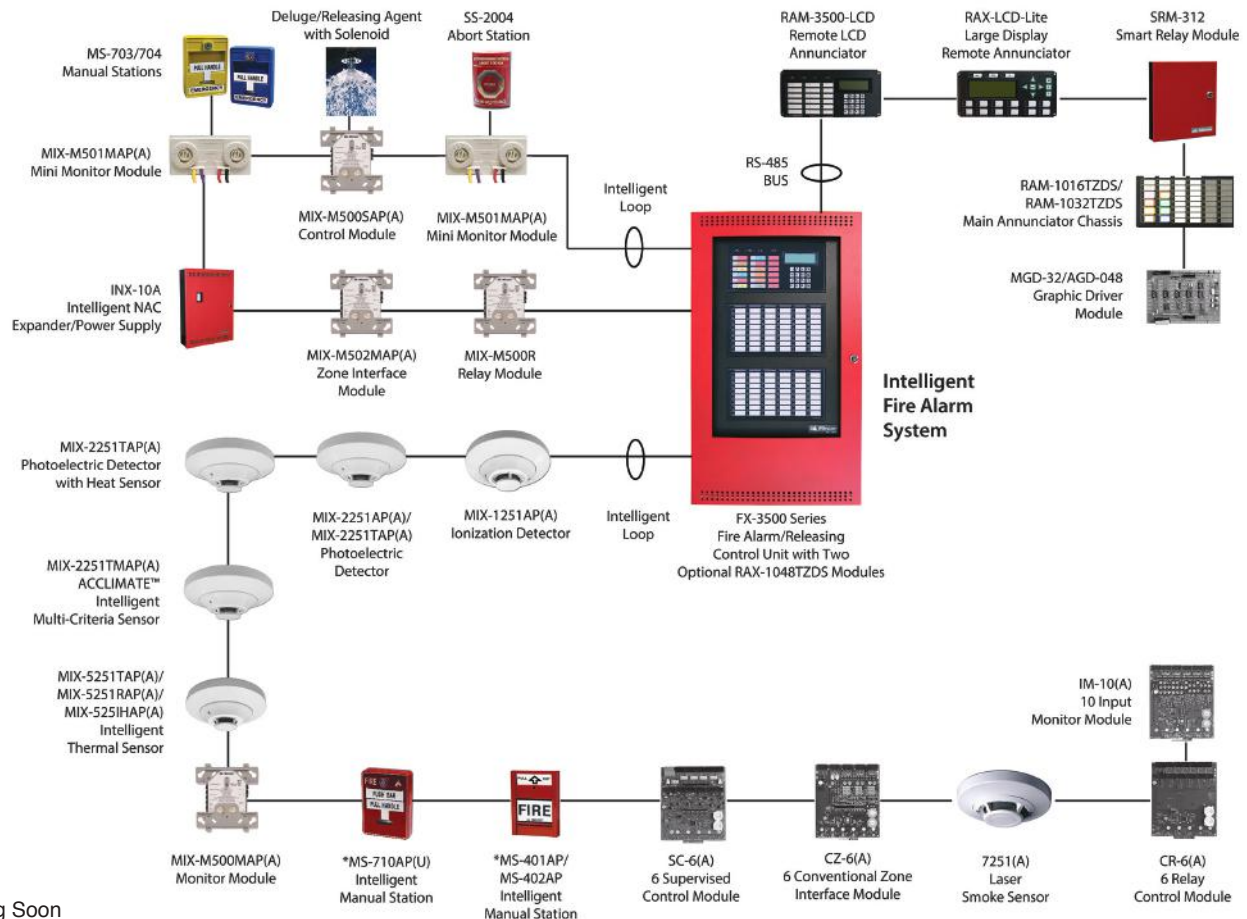
Mircom's FX-3500 Series systems are powerful Intelligent Fire/Agent Release Control Units that are UL/ULC listed for fire alarm services, including releasing service. The FX-3500 Series provides up to three intelligent Data Communication Links (DCLs) / Signaling Line Circuits (SLCs) that support a new AP protocol, which is faster and has capacity for up to 954 intelligent devices. In addition, the FX-3500 Series has backward compatibility support for CLIP devices. The FX-3500 Series systems are recommended for both new and retrofit fire detection and/or special-hazard/critical-infrastructure suppression/special agent applications. Capable of releasing up to six discrete physical hazard zones, the FX-3500 offers exceptional value for complex installations. Programming versatility makes the FX-3500 Series the ideal choice for dependable fire detection, signaling and protection in industrial, commercial and institutional buildings.

- New fast AP protocol, extending number of devices on the loops, up to 954 (318 X 3)
- Panel supports both AP and CLIP protocol
- Use USB security key
- Utilizes the universal box
- Utilizing cross-zoning or counting detection
- Has a 4X20 line display
- Flush or Surface mountable with no additional hardware required

### Available on FX-3500-RCU only

- Intelligent Addressable Fire Alarm with Releasing Control
- Six dedicated hazard zones

## FX-3500 SERIES SYSTEM DIAGRAM



\*Coming Soon



# FX-3318 INTELLIGENT/ADDRESSABLE FIRE ALARM PANEL

Mircom's FX-3318 Addressable Fire Alarm Control Panel is UL 864 REV 9, COA and CSFM listed.



NYC Fire Dept

For those jobs that require a solution that is low cost for small to medium facilities, the NEW FX-3318 single loop intelligent panel is the solution.

It is cost effective and easy to install, program and use. The FX-3318 has uncompromised features and has the look and feel of larger Mircom panels as Menu's follow standard Mircom panels to reduce learning. The FX-3318 is a great alternative to replace conventional systems. The built-in trim ring accommodates both retrofits and new installs reducing time with semi-flush or surface mountable options.

The FX-3318 provides 1 intelligent signaling Line Circuit (SLC) that supports the Advanced Communication Protocol (AP) protocol. AP devices use a high speed communication protocol that greatly increases the speed of communication between intelligent devices. In addition, the AP protocol allows for greater system capacity with support for up to 318 devices. The FX-3318 has backwards capability for legacy CLIP devices supporting up to 198 devices..

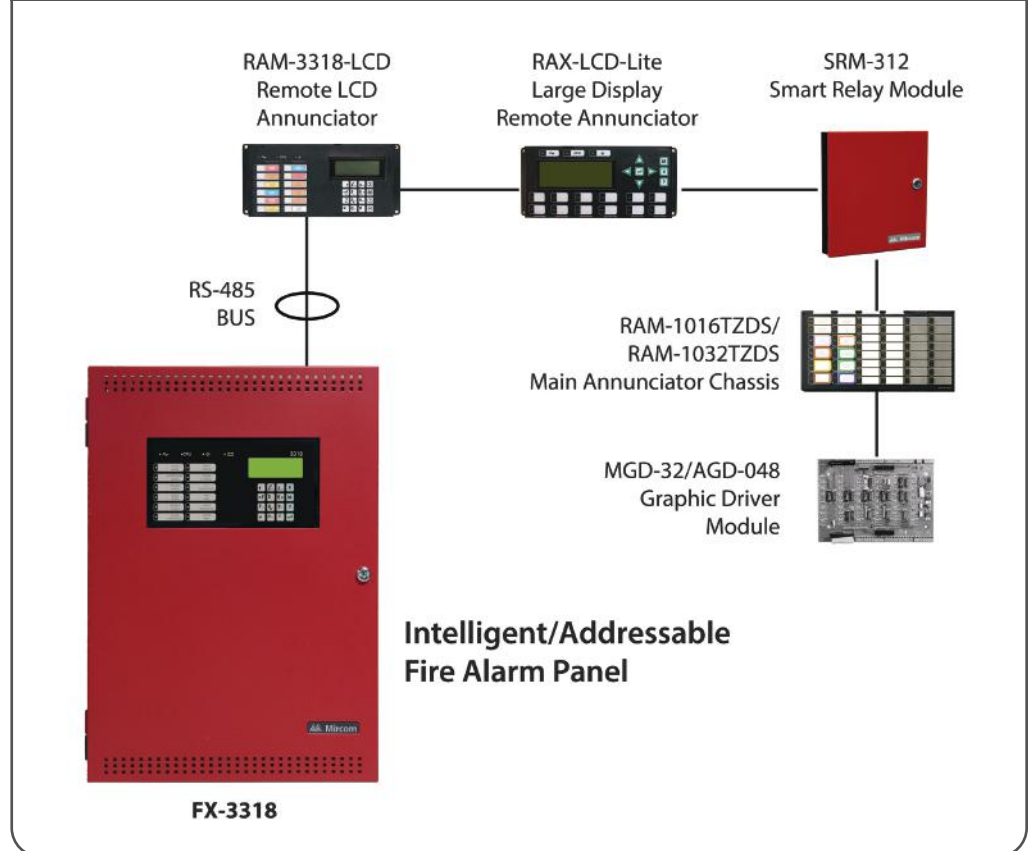
The FX-3318 supports Class B (Style 4), Class A (Style 6), Class X (Style 7) NAC Circuits (max 1.5 Amps each - 5 Amps total).

- Supports both AP and CLIP protocols
- Dedicated common alarm, supervisory, trouble and auxiliary alarm relays
- 4x20 Backlit LCD Display
- Flush or Surface Mountable with no additional hardware
- PAS (Positive Alarm sequence)
- Built in dialer
- Supports up to 7 annunciators with optional red, white or NEW stainless steel enclosures



Mircom's Advanced Protocol (AP) devices use a high speed communication protocol that greatly increases the speed of communication between the intelligent devices. Mircom's Advanced Protocol uses a superior group polling method as well as an interrupt feature that provide for a faster response to an alarm condition. In addition, the Advanced Protocol allows for greater system capacity with support for up to 318 devices per SLC circuit. The AP devices are backwards compatible to operate in CLIP mode for legacy system applications.

## FX-3318 SYSTEM DIAGRAM





# LED HORNS & HORN STROBES



Mircom's Notification Appliances offer an audible/visual solution that delivers exceptional energy efficiency in a compact design. Mircom offers multiple field - selectable audible/visual settings, as well as a wide range of mounting options in an easy to install compact unit.

Utilizing advanced LED technology, the Mircom Notification Appliances provide a much lower current draw than xenon bulb technology. This in turn allows for more devices on a NAC circuit while reducing the number of external power supplies required. Designed for indoor wall or ceiling mount applications, Mircom's Notification Appliances comply with all agency requirements including the new 2016 edition of NFPA 72.

## ENERGY EFFICIENT

- Advanced LED technology provides superior current draw performance
  - o Allows for a higher capacity of notification devices per circuit
  - o Eases external power supply requirements

## FLEXIBLE

- Standard and high candela settings in one unit (Horn Strobe) to meet virtually any application
  - o Wall Mount models: 15, 15/75, 30, 75, 110, 185 cd
  - o Ceiling Mount models: 15, 15/75, 30, 75, 110 cd
  - o Reduction in SKUs to stock
  - o Standard or high candela options for Speaker Strobes
- Multiple field-selectable audible settings
  - o Temporal, Continuous, March Time and 20 BPM audible tones
  - o High and low volume settings
  - o 25/70 V speaker input options

## LOW FREQUENCY DEVICES

- Mini Horns
- Wall Mount Horn Strobes

## SAFE

- Device settings are located on the back of the unit to prevent tampering
- Compliance
  - o UL 1971, UL 1638, UL 464, and UL 1480
  - o ULC-S525, ULC-S526, and ULC S 541
  - o NFPA 72 2016 Edition (Meets 20 millisecond pulse width requirement)

## EASY TO INSTALL

- All models include a mounting plate that allows for the devices to be pre-wired (Horn Strobes)
- Wide range of mounting options
  - o Mount to Mircom BB-400 surface mount back box, single gang, 4-inch square, double gang, octagon and 4-inch junction boxes
  - o Retrofit kit for Speaker Strobes for limited ceiling back box space



Wall/Ceiling Mount Horns  
FH-400-RR (red)  
FH-400-WW (white)



Wall Mount Strobes  
FS-400-RR (red)  
FS-400-WW (white)



Wall Mount Horn Strobes  
FHS-400-RR (red)  
FHS-400-WW (white)  
FHSLF-400H-WW (red - low frequency)  
FHSLF-400H-RR (white - low frequency)



Ceiling Mount Strobes  
FS-400C-RR (red)  
FS-400C-WW (white)



Ceiling Mount Horns Strobes  
FHS-400C-RR (red)  
FHS-400C-WW (white)



Wall Mount Mini Horns  
MH-26 (red)  
MH-26 (white)  
MH-26LFR (red - low frequency)  
MH-26LF (white - low frequency)



# LED SPEAKERS & SPEAKER STROBES

COMING SOON



Mircom's Speakers and Speaker Strobes extend the notification appliance offering to provide a complete family lineup which utilizes advanced LED technology.

Designed for indoor wall or ceiling mount applications, Mircom's Speakers and Speaker Strobes are offered in 25/70 V, high candela and red/white options for flexibility.

Mircom also offers a trim plate/adaptor kit for retrofit applications where ceiling back box space is limited.

Mircom's Notification Appliances comply with all agency requirements including the new 2016 edition of NFPA 72.



## Wall Mount Speakers

- SPP-204-25R (red)
- SPP-204-25 (white)
- SPP-204-70R (red)
- SPP-204-70 (white)



## Low Profile Ceiling Mount Speakers

- SPP-104-25R (red)
- SPP-104-25 (white)
- SPP-104-70R (red)
- SPP-104-70R (white)



## Ceiling Mount Speaker Retrofit Kit

- SPKC-W



## Wall Mount Speaker Strobes

- SPPS-204-25R (red)
- SPPS-204-25 (white)
- SPPS-204-70R (red)
- SPPS-204-70 (white)
- SPPS-204-70HR (high candela red)
- SPPS-204-70H (high candela white)



## Low Profile Ceiling Mount Speakers Strobes

- SPPS-104-25R (red)
- SPPS-104-25 (white)
- SPPS-104-25HR (high candela red)
- SPPS-104-25H (high candela white)
- SPPS-104-70R (red)
- SPPS-104-70R (white)
- SPPS-104-70HR (high candela red)
- SPPS-104-70H (high candela white)



## Ceiling Mount Speaker Strobes Retrofit Kit

- SPKC-W



## VOICE EVACUATION SPEAKERS & FIREFIGHTER PHONES



## FIREFIGHTER TELEPHONE HANDSETS

Mircom firefighter telephones are designed for maximum performance with Mircom QX-5000 and Flex-Net emergency zoned audio systems. These wired or addressable telephones feature heavy-duty construction, flush or surface mounting and the option for plug-in portable configurations.

## SP-SERIES SPEAKERS



Mircom SP series speakers broadcast high quality tone signals and are ideal for voice notification in multi-unit residential, hospitality, shopping malls, sport facilities and other applications where attractive appearance and dependable performance are essential.

## SP-SERIES SMART SPEAKERS



Mircom 4-inch SP 'Smart' Series speakers are designed for maximum performance with Mircom QX-5000 and Flex-Net emergency zoned audio systems and provide local speaker silencing and resound. Silencing can be done on the speaker baffle or via remote switch plates.

For Canadian market

# VOICE EVACUATION SYSTEM



CITY OF CHICAGO

## QX-5000 SERIES VOICE EVACUATION SYSTEM

Mircom's QX-5000 Series is a multi-channel, zoned audio system that allows the operator to selectively page from a central location to any of the system's audible devices. In addition, the QX-5000 allows for zoned, fire fighter communication with remote telephone handsets that are permanently installed throughout a building. The system has a simple interface to the Fire Alarm Control Unit, and contains its own power supply and battery backup system.

- Multi-channel, zoned voice paging and alarm system
- Multiple lobby capability
- Multiple amplifier sizes
- Zone or All-Call selectability (Alert Evacuation)
- Provides single or multiple command center for use in emergencies
- Removable terminal blocks for ease of installation and maintenance
- Operates from integrated 24VDC backup batteries in the event of a power failure
- Zoned, firefighter telephone capability
- Indication of all required fault conditions
- Speaker circuits are integrated with amplifier circuits
- Multiple amplifier sizes (up to 7 per enclosure)
- Maintains full supervision during battery operation
- Digitized voice capability



## VOICE EVACUATION DIAGRAM

FX-2000 Fire Alarm Panel in a BB-5014 Backbox

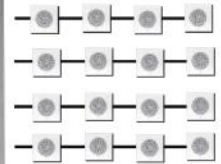
Fire Phones



QBB-5001 Audio Panel

QBB-5001 Audio Panel

Voice Evacuation Speaker Circuits



Up to 8 AudioPanels

# QX-MINI EMERGENCY COMMUNICATION SYSTEM



QX-mini is an emergency and fire alarm audio system designed to provide notification for small to medium applications.

## COMPACT ENERGY EFFICIENT AUDIBLE/VISUAL SOLUTION

- Easy to install & configure
- 30 Watt amplifier that can be expanded to 60 Watts (optional amplifier module)
- Notifications can be sent using:
  1. Stored digital recordings
  2. Master microphone
  3. Remote microphone
- Comes with standard pre-recorded messages
- Can store up to 12 minutes of digital recordings

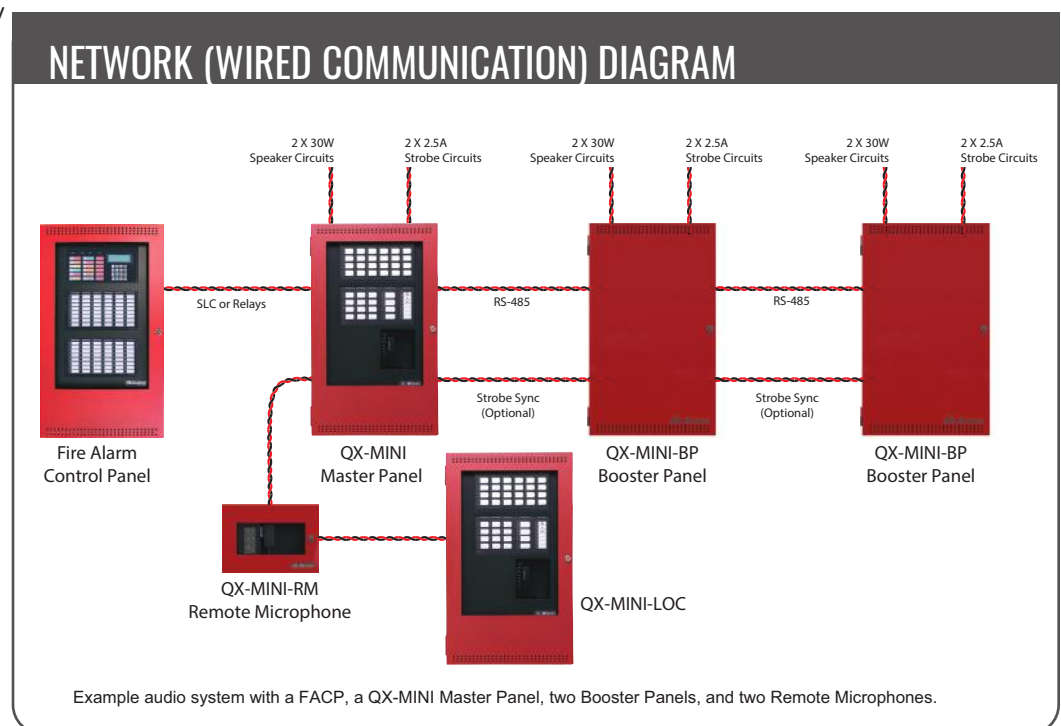
## ALL THE FEATURES OF A PREMIUM AUDIO SYSTEM:

- SLC Control
- Up to 60 Watts of audio output
- Supports up to 6 panels
- Digital Messaging
- Expandable to 24 speaker outputs
- Capable of generating low tones to any speaker (520Hz)



## FEATURES:

- Supports up to 30 Watts of audio output and 5amps for NAC circuits expandable to 60W
- Integrates with compatible intelligent fire alarm control units or with any UL-listed fire alarm control unit through relay contacts
- Audio system supports up to 6 panels in total (one Master Panel with 5 Booster Panels) for a total of 360 Watts
- Equipped with standard digital messages
- Supports up to 6 remote microphones and/or Local Operating Consoles (LOC)
- Select from 14 digital messages at the control panel
- Custom messages using the software configurator
- Two output circuits (2.5A each) for horns and strobes. Expandable up to 12 circuits
- UL, ULC and CSFM approved



# CONVENTIONAL FIRE ALARM CONTROL UNITS



## FA-1000 SERIES

The FA-1000 Series Fire Alarm Control Units are multi-zone units designed for maximum flexibility and easy installation and operation. Fully configurable from the front panel using push buttons and program switches, the FA-1000 Series enables the user to configure the system to meet their specific requirements.

- Modular design
- Each indicating circuit can be configured as silenceable or non-silenceable
- Each initiating circuit can be configured as Alarm, Supervisory, Waterflow or Trouble
- Two LEDs per initiating circuit; one for Trouble and one for Status
- RS-485 interface for remote multiplex annunciators
- Interface for remote trouble indicator
- Easy configuration via push buttons and program switches on the front panel
- Fully site or field programmable indicating circuits and auxiliary relays
- Slide-in labels for zone identification
- 6 or 12 Amp power supply
- Removable door for easy installation and servicing
- Removable terminal blocks for easy wiring and servicing
- Individual disconnect switches
- Configurable for two stage operation
- Eight to seventy two point system

# THREE AND SIX ZONE FIRE ALARM UNITS



## FA-100 SERIES

Mircom's FA-100 Series Fire Alarm Control Units are designed for fire alarm systems in small commercial, institutional and industrial occupancies. The FA-100 Series are available in three and six zone configurations and provide easy installation and reliable operation.

### FA-103

- Three Class 'B' Input circuits
- Two Class 'B' Output circuits (2.0Amps)
- Signal Silence
- Output for remote trouble indicator
- Alarm and trouble contacts
- White or Red exterior colours

### FA-106

- Six Class 'B' Input circuits
- Two Class 'B' Output circuits (2.0Amps)
- Signal Silence
- Output for remote trouble indicator
- Alarm and trouble contacts
- White or Red exterior colours

# CONVENTIONAL FIRE ALARM CONTROL UNITS



NYC  
Fire Dept.

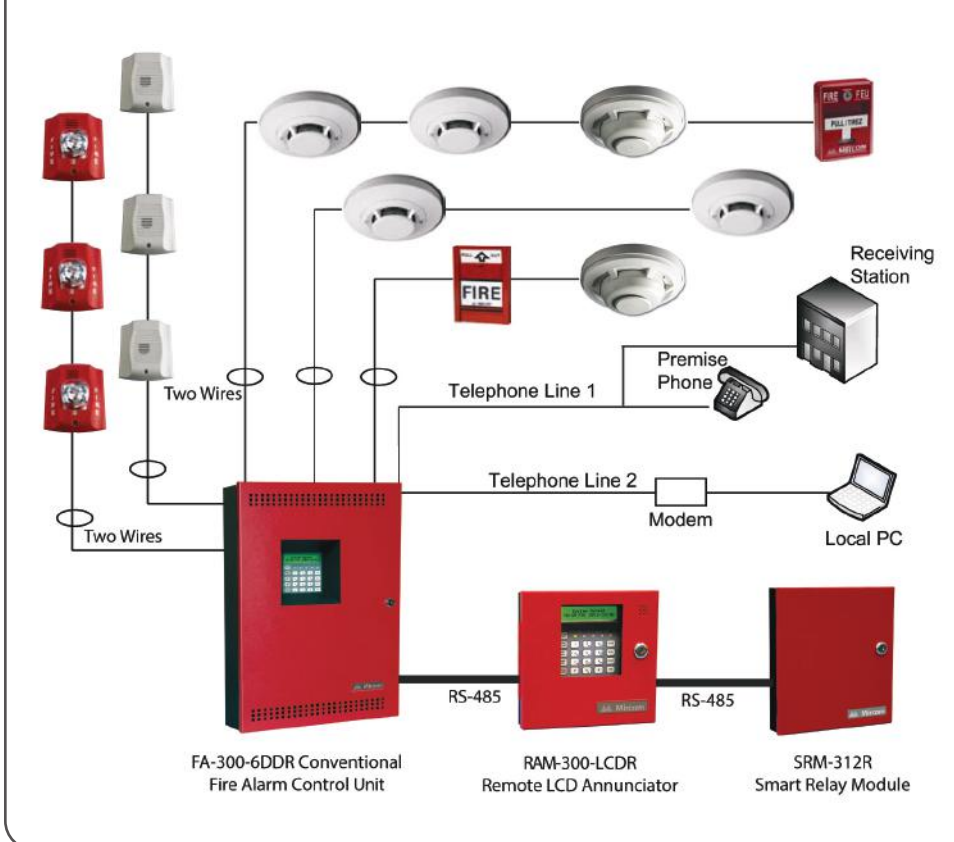


## FA-300 SERIES

Designed for small to medium commercial, institutional and industrial occupancies, the FA-300 Series Fire Alarm Control Units are powerful enough to meet today's installation demands. The FA-300 Series are available in six, eight and twelve zone models with a built-in UDACT/Digital Communicator on select models. The FA-300 Series are available in LED and LCD display configurations.

- Six, eight and twelve zone configurations
- LED and/or LCD display configurations
- Powerful 5 Amp dedicated power supply
- Configurable UDACT/Digital Communicator (on select models)
- Optional city tie/polarity reversal module
- Optional modules for internal relay circuits
- Built-in sync protocols for major strobe manufacturers
- Remote upload/download capabilities (on models with UDACT)
- Individual circuit disconnect buttons
- Remote relay modules
- Remote programming capability
- Configurable for two stage operation on eight and twelve zone models
- Two event history logs – 200 events per log

## CONVENTIONAL FIRE ALARM SYSTEMS DIAGRAM



## CONVENTIONAL FIRE DEVICES



## CONVENTIONAL DETECTORS

Mircom offers the widest range of conventional manual stations, heat detectors, smoke detectors, duct smoke detectors and beam smoke detectors to meet the needs of any commercial, institutional or residential facility. For unique and special risk applications Mircom also supports industrial, transport and military applications with specialty gas, flame and smoke detectors, including waterproof and explosion proof models.

# AGENT RELEASE CONTROL UNIT



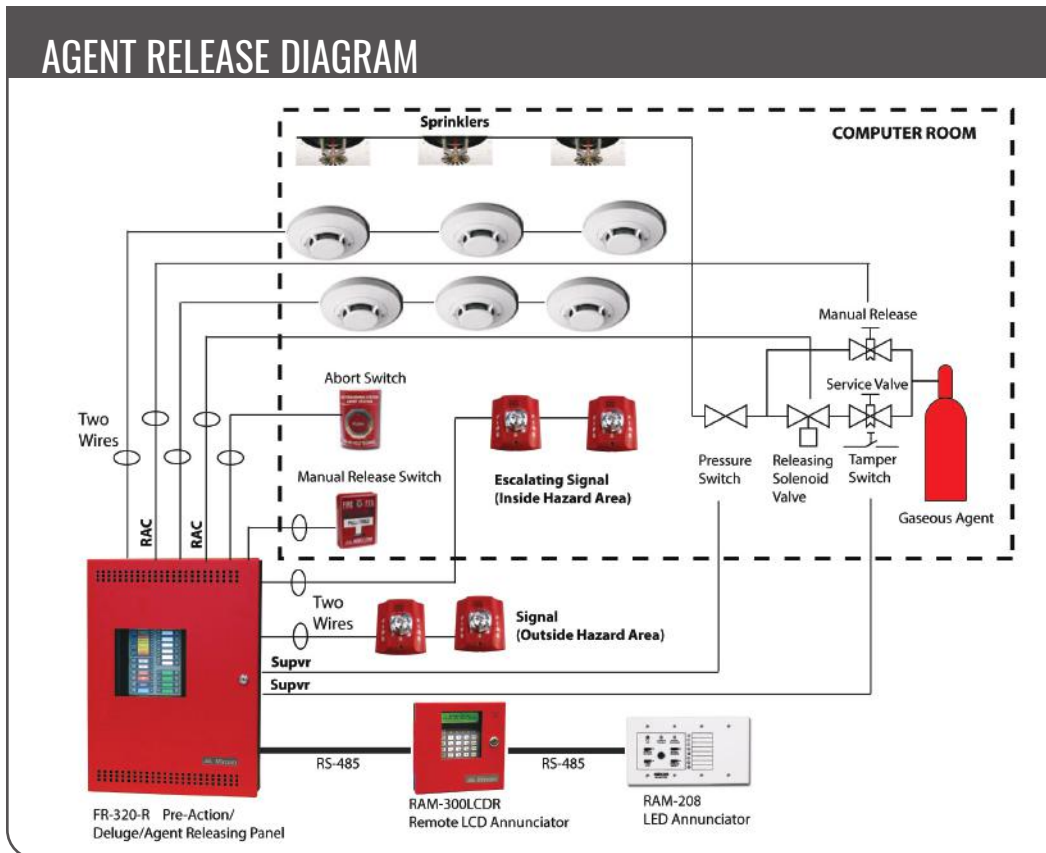
## FR-320 SERIES

Mircom's FR-320 is a dual releasing control panel that is field configurable for use on Deluge Sprinkler Systems, Pre-Action Sprinkler Systems and Agent Release Systems. The mode of operation is easily configured by selecting one of fourteen pre-configured modes of operation. The simple configuration process is done via the front panel and requires no laptop or complicated programming. The FR-320 is available with or without a built-in UDACT/Digital Communicator.



- Field configurable to operate with a Deluge Sprinkler System, a Pre-Action Sprinkler System and an Agent Release System
- Six class B (Style B) input circuits
- Four class B (Style Y) output circuits
- True class A circuit configuration
- Cross zone option
- Special releasing power supply and release activation considerations preventing false dumps
- Configurable to perform two hazard areas
- 5 Amp Power Supply
- 14 pre-configured modes that can be set for easy configuration
- Non-Verified Alarm, Non Latching Supervisory, Latching Supervisory or Agent Release/Water Flow depending on the Mode of Operation selected
- Configurable input circuits (2) for Manual Release Input, Abort Input or both
- Configurable output signals for steady tone (fixed) or escalating tone (programmable)

## AGENT RELEASE DIAGRAM



## FIELD CONFIGURABLE

Mircom brings industry-leading detection and precise control to small fire suppression applications, including food services, manufacturing, petrochemical and computer facilities. These panels are field configurable for use in deluge sprinkler, pre-action sprinkler and agent release systems without the need for a programming computer.

# A COMPLETE SYSTEM SOLUTION FOR ANY PROJECT



Open Graphic Navigator is a UL/ULC approved centralized building management system that provides real-time local or remote monitoring.

Winner of the 2013 Edison Gold Medal Award in the Advanced Technologies – Smart Systems category for its innovative Open Graphic Navigator.

## REAL-TIME EVENT NOTIFICATION WHEREVER YOU ARE

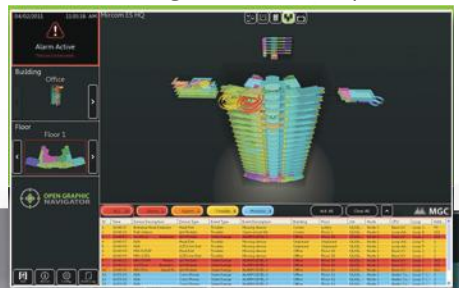
As a powerful integration tool, Open Graphic Navigator is easily customized to communicate a range of system events to different responding authorities or personnel, including fire, security, maintenance and service staff.

Open Graphic Navigator means you're connected 24/7.



## BUILDING MANAGEMENT SYSTEM INTEGRATION

Mircom intelligent network systems can be integrated with compatible heating, cooling, ventilation, humidification, pressurization and energy management systems to offer superior fire protection and centralized control of multiple systems.



## EMERGENCY EVENTS AND NOTIFICATIONS

Open Graphic Navigator provides real-time graphical notifications for fire and life safety systems. You see where the problem is, allowing you to respond quickly.

## 2D AND 3D VISUALIZATION

Open Graphic Navigator is the only graphics solution that provides both 2D and 3D troubleshooting. It is the perfect solution for large campuses or vertical properties where being able to guide emergency personnel to precise locations is crucial.

## ENTERPRISE READY

Open Graphic Navigator has already been proven in complex business environments.

## POWERFUL

Designed for the most demanding building standards in the world:

- Airports
- University Campuses
- Hospitals
- Government Buildings
- Commercial & Residential Towers

## UNIFYING

Pulls together building systems into one powerful visualization:

- Fire
- Access Control
- Mircom's Smart Home Automation
- Emergency Phones

## SIMPLE

Helps you quickly react to all events and emergency notifications:

- Choice of 2D & 3D visualizations
- Clean, easy-to-read System Status
- Lists all notifications via Event Log
- Custom event response message
- Configurable monitoring screens

# APPLICATIONS

Mircom solutions are protecting lives and property in thousands of facilities worldwide.

- Commercial Towers
- Hospitals / Health Care Facilities
- Large Hotels
- University / Corporate Campuses
- Hospitality
- Large Shopping Malls
- Military Facilities
- High-rise residential
- Airports / Transportation
- Petrochemical Facilities
- Correctional Facilities
- Manufacturing Facilities
- Distribution Centers

For a complete list of our project portfolio, please visit our web site.



## About the Mircom®

Founded in 1991, Mircom is a global designer, manufacturer and distributor of Intelligent Building Solutions. Reaching customers in over 100 countries worldwide, Mircom's portfolio includes: fire detection & alarm, communications & security, mass notification, building automation & smart technologies. Mircom's vision is to make buildings worldwide safer, smarter, and more livable.

Our global network of dedicated Sales and Service Offices, known as Mircom Engineered Systems, allows us to be a full solution provider. Through Mircom ES, we're able to provide and fully service our line-up of innovative and advanced solutions which are scalable to satisfy diverse user demands, from small & mid-size buildings to the world's most complex applications.

## CORPORATE/CANADA

Tel: 888.660.4655

Fax: 888.660.4113

## USA

Tel: 888.660.4655

Fax: 888.660.4113

## INTERNATIONAL

Tel: 905.660.4655

Fax: 905.660.4113

[mircom.com](http://mircom.com)

THIS INFORMATION IS FOR MARKETING PURPOSES ONLY AND NOT INTENDED TO DESCRIBE THE PRODUCTS TECHNICALLY  
For complete and accurate technical information relating to performance, installation, testing and certification, refer to technical literature.

The contents of this document may be changed by Mircom Technologies Ltd. without notice. Mircom makes no representations or warranties about the completeness or accuracy of these contents and expressly disclaims liability howsoever arising therefrom. These contents, including all referenced trade names, logos, graphics, marks and copy right information, registered or unregistered, are the exclusive property of Mircom and shall not, without its prior consent, be used, reproduced, stored or transmitted by any means. All logos and images are owned by their respected parties and are used for reference only. Purchase of Mircom products is subject to standard warranties, software license agreement and terms and conditions, available on request.

