

Optilink+ 5E, Optilink+ 6 and Optilink+ 6A patch cables by Lynn Electronics are manufactured in the USA and comply with the TAA (Trade Agreements Act) and the BAA (Buy American Act). Designed with the IT professional in mind, Optilink patch cables feature a low profile snagless clip style strain relief that sits flush to the RJ45 connector. This makes it ideal for use in high density patch panels and switches. All Optilink patch cables can be customized for length, jacket color, boot color, jacket type and brand specific cabling. Custom configurations are available in straight, crossover, and rolled wiring.

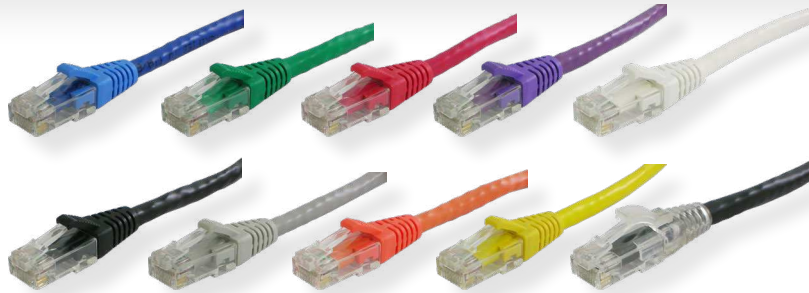
CAT5E and CAT6 Patch Cables - Domestic

Construction:

- CAT5E, CAT6 and CAT6E 4 pair UTP, CM rated, high performance stranded patch cable
- High performance CAT5E and CAT6 RJ45 plugs with gold plated contacts
- Low profile snagless clip style strain relief available in 10 colors
- 16 Vibrant colored jackets available
- Ultra flexible, sturdy jacket

Features:

- BAA and TAA compliant
- Made in the USA
- Each cable 100% tested



Part Number Matrix

O	L	Cable Mfg	Construction	Cable Type	Jacket Color	Boot Color	Length
K		Berk-Tek	10 = CAT5E RJ45 568B	A = CAT5E Stranded UTP	BK = Black	K = Black	
G		Generic	12 = CAT5E RJ45 568A/B Crossover	C = CAT6 Stranded UTP	BL = Blue	B = Blue	
Q		Quabbin	20 = CAT6 RJ45 568B	G = CAT6A Stranded FTP	GR = Green	N = Green	
		Other manufacturers available	22 = CAT6 RJ45 568A/B Crossover	K = CAT5E Stranded FTP	GY = Gray	G = Gray	
			25 = CAT6A RJ45 568B	L = CAT6E Stranded FTP	OR = Orange	O = Orange	
			26 = CAT6E RJ45 568B	O = CAT6A Stranded UTP	PU = Purple	V = Purple	
			Other constructions available	P = Mini 28AWG CAT6 Stranded UTP	RD = Red	R = Red	
				S = Mini 28AWG CAT6A Stranded UTP	WH = White	W = White	
				Other constructions available	YE = Yellow	Y = Yellow	
					Other Colors available	C = Clear	
						X = No Boot	

CAT6A Patch Cables

Lynn Electronics CAT6A are manufactured utilizing high performance CAT6A cable and plugs. Available in shielded and unshielded versions. Customer specific cable and connectors may be used upon request.

Construction:

- CAT6A 4 pair UTP, CM rated, high performance stranded patch cable
- High performance CAT6A RJ45 plugs with gold plated contacts
- Various shielded constructions available

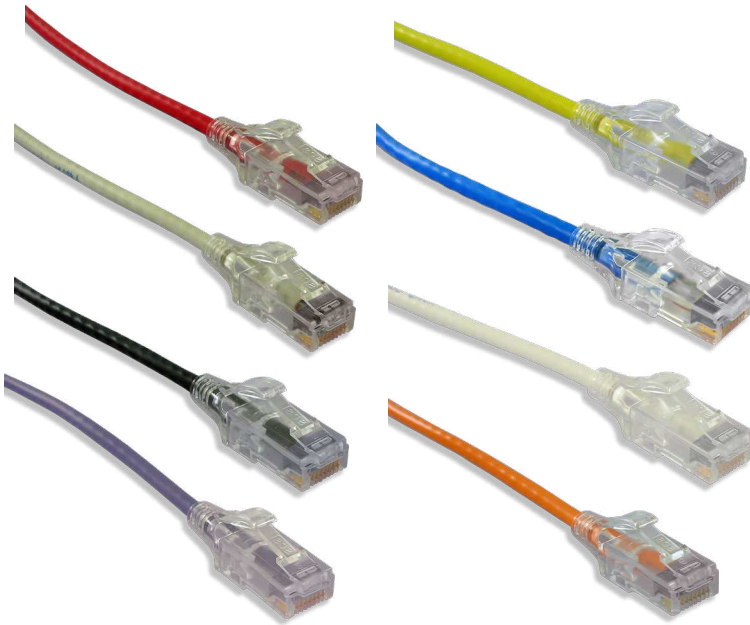
Features:

- BAA and TAA compliant
- Made in the USA
- Each cable 100% tested



Lynn Electronics 28AWG Mini CAT6/CAT6A are manufactured utilizing high performance CAT6/CAT6A cable and plugs. Featuring a reduced diameter, the Mini CAT6/CAT6A maximizes air flow and provides increased cable density making them perfect for top of the rack applications in the data center. The reduced overall diameter and smaller bend radius makes routing and installation in cable management panels and high density applications quicker and easier.

28AWG Mini CAT6 and CAT6A Patch Cables



Construction:

- CAT6/CAT6A 4 pair UTP, CM rated, high performance 28 AWG stranded patch cable
- High performance CAT6/CAT6A RJ45 plugs with integral clear slimline boot
- Available in plenum

Features and Benefits:

- 70% the size of standard CAT6/CAT6A
- Superior flexibility
- Improved cable density and air flow
- Each cable 100% tested

CAT6 Part Number

	Black	Blue	Gray	Green	Orange	Purple	Red	White	Yellow
1 ft.	OLG20PBKC-001	OLG20PBLC-001	OLG20PGYC-001	OLG20PGRC-001	OLG20PORC-001	OLG20PPUC-001	OLG20PRDC-001	OLG20PWHC-001	OLG20PYEC-001
3 ft.	OLG20PBKC-003	OLG20PBLC-003	OLG20PGYC-003	OLG20PGRC-003	OLG20PORC-003	OLG20PPUC-003	OLG20PRDC-003	OLG20PWHC-003	OLG20PYEC-003
5 ft.	OLG20PBKC-005	OLG20PBLC-005	OLG20PGYC-005	OLG20PGRC-005	OLG20PORC-005	OLG20PPUC-005	OLG20PRDC-005	OLG20PWHC-005	OLG20PYEC-005
7 ft.	OLG20PBKC-007	OLG20PBLC-007	OLG20PGYC-007	OLG20PGRC-007	OLG20PORC-007	OLG20PPUC-007	OLG20PRDC-007	OLG20PWHC-007	OLG20PYEC-007
10 ft.	OLG20PBKC-010	OLG20PBLC-010	OLG20PGYC-010	OLG20PGRC-010	OLG20PORC-010	OLG20PPUC-010	OLG20PRDC-010	OLG20PWHC-010	OLG20PYEC-010
14 ft.	OLG20PBKC-014	OLG20PBLC-014	OLG20PGYC-014	OLG20PGRC-014	OLG20PORC-014	OLG20PPUC-014	OLG20PRDC-014	OLG20PWHC-014	OLG20PYEC-014
25 ft.	OLG20PBKC-025	OLG20PBLC-025	OLG20PGYC-025	OLG20PGRC-025	OLG20PORC-025	OLG20PPUC-025	OLG20PRDC-025	OLG20PWHC-025	OLG20PYEC-025

CAT6A Part Number

	Black	Blue	Gray	Green	Orange	Purple	Red	White	Yellow
1 ft.	OLG25SBKC-001	OLG25SBLC-001	OLG25SGYC-001	OLG25SGRC-001	OLG25SORC-001	OLG25SPUC-001	OLG25SRDC-001	OLG25SWHC-001	OLG25SYEC-001
3 ft.	OLG25SBKC-003	OLG25SBLC-003	OLG25SGYC-003	OLG25SGRC-003	OLG25SORC-003	OLG25SPUC-003	OLG25SRDC-003	OLG25SWHC-003	OLG25SYEC-003
5 ft.	OLG25SBKC-005	OLG25SBLC-005	OLG25SGYC-005	OLG25SGRC-005	OLG25SORC-005	OLG25SPUC-005	OLG25SRDC-005	OLG25SWHC-005	OLG25SYEC-005
7 ft.	OLG25SBKC-007	OLG25SBLC-007	OLG25SGYC-007	OLG25SGRC-007	OLG25SORC-007	OLG25SPUC-007	OLG25SRDC-007	OLG25SWHC-007	OLG25SYEC-007
10 ft.	OLG25SBKC-010	OLG25SBLC-010	OLG25SGYC-010	OLG25SGRC-010	OLG25SORC-010	OLG25SPUC-010	OLG25SRDC-010	OLG25SWHC-010	OLG25SYEC-010
14 ft.	OLG25SBKC-014	OLG25SBLC-014	OLG25SGYC-014	OLG25SGRC-014	OLG25SORC-014	OLG25SPUC-014	OLG25SRDC-014	OLG25SWHC-014	OLG25SYEC-014
25 ft.	OLG25SBKC-025	OLG25SBLC-025	OLG25SGYC-025	OLG25SGRC-025	OLG25SORC-025	OLG25SPUC-025	OLG25SRDC-025	OLG25SWHC-025	OLG25SYEC-025