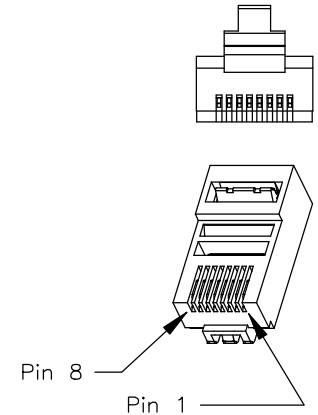
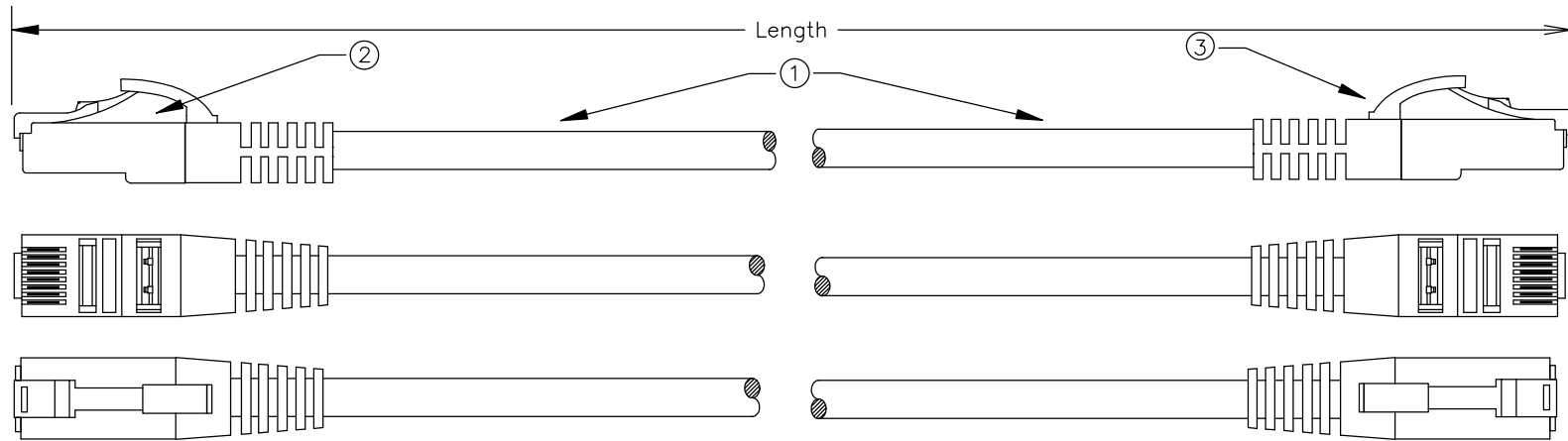


Rev.	Description	By	Date

**MADE IN USA**

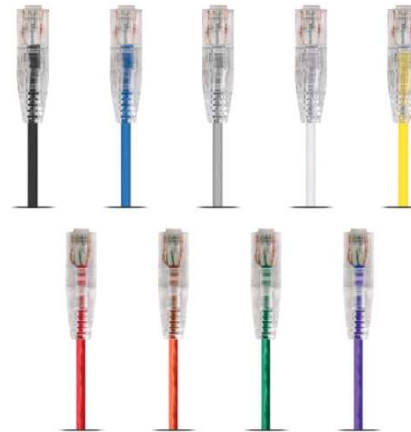


**Applications**

- Gigabit Ethernet 1000 Base-T
- Fast Ethernet 100 Base-T
- Ethernet 10 Base-T
- 4/16 Mbps Token Ring (802.5)
- 100 VG-Any Lan
- 100 Mbps; 55-155-622 Mbps (ATM)
- Voice
- High bandwidth applications
- Applications developed for operation over CAT6 or Class E cabling
- TIA PN-4657 Gigabit Ethernet over CAT6

**Standards Compliance and Listings**

- UL Listed Components
- Category 6 TIA/EIA-568-B-2.1



**Wire Map**

**Part Number Matrix**

P1	Color	P2	OLG20P(XXC)-(LLL) Replace (XX) with Jacket Color Replace (LLL) with length
1	White/Orange	1	<b>JACKET COLOR CODE</b> YE = YELLOW BK = BLACK RD = RED GR = GREEN BL = BLUE GY = GRAY WH = WHITE OR = ORANGE PU = PURPLE
2	Orange	2	
3	White/Green	3	
4	Blue	4	
5	White/Blue	5	
6	Green	6	
7	White/Brown	7	
8	Brown	8	

Item	Description	Qty
1	Cable: Mini CAT6 UTP 28AWG Stranded Patch Cable	AR
2	Connector: High Performance CAT6 RJ45 Plug With Clear Snagless Boot	2



Drawing No: OLG20PXXC-XXX  
 Drawn By: J.Riling

Desc: Mini CAT6 28 AWG Patch Cable, RJ45/RJ45  
 with Clear Snagless Boot

Sheet: 1/1  
 Unit: FT

UNLESS OTHERWISE SPECIFIED  
 DIM. ARE IN INCHES-TOL. ON  
 FRACTIONS: DECIMALS: ANGLES:  
 ± ~ .XX .01 ±1/2  
 THIR  
 ANGLE  
 PROJECTION

This Drawing is the exclusive property of Lynn Electronics  
 Information contained herein may not be disclosed or duplicated  
 in any form without the express written consent of Lynn Electronics

Drawing Date: 06/05/2015

Checked By: C.FOY

Uncontrolled Copy

Scale: N/A