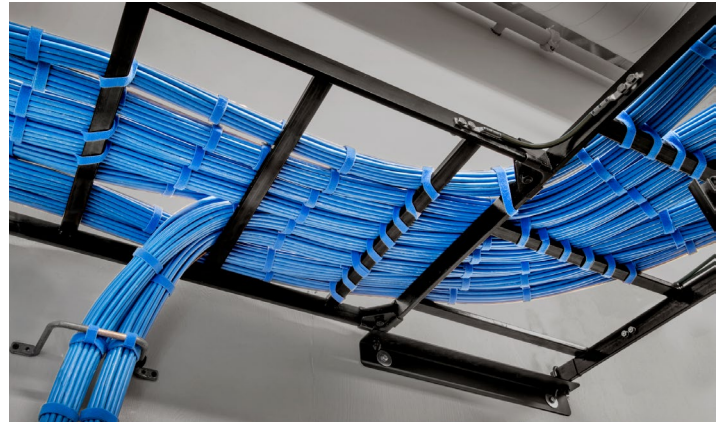




COMPLETE COPPER COMMUNICATION SOLUTIONS

An End-to-End deployment for guaranteed performance.



SIGNAMAX[™]

Keeping Your World Connected

SIGNAMAX™

Complete Copper Communication Solutions

Whether you are implementing a category 6A system, building a category 6 platform, or installing a category 5e network, our copper cabling systems can provide the scope of network configurations that any project demands. All our solutions exceed category-rated performance and qualify for our comprehensive Cabling System Warranty Program.

CATEGORY 6A SYSTEMS:

- Ensures IEEE 802.3an 10 Gigabit Ethernet performance
- Exceeds ANSI/TIA-568-C.2 component performance specifications
- Handles full-load amperage to support PoE
- Eliminates alien crosstalk

RECOMMENDED APPLICATIONS:

Education



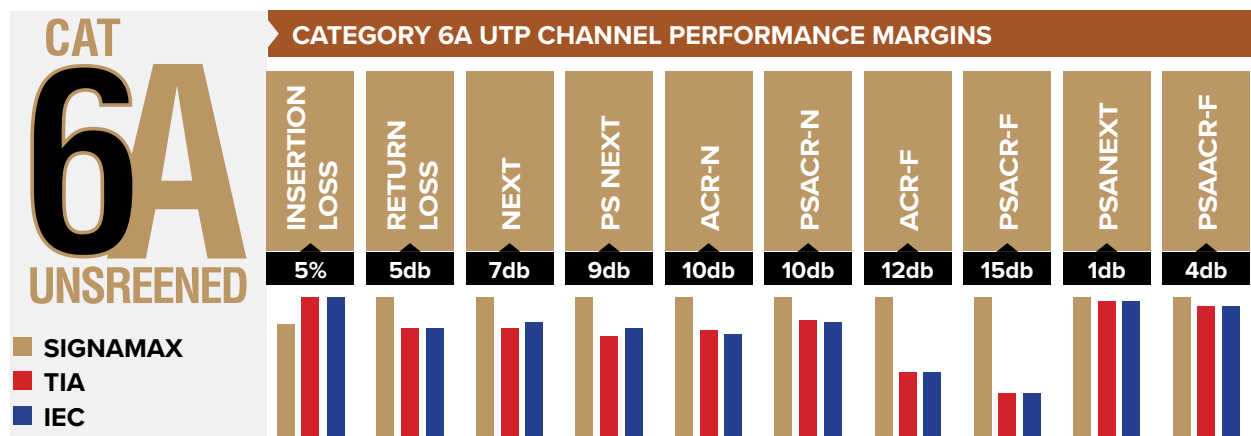
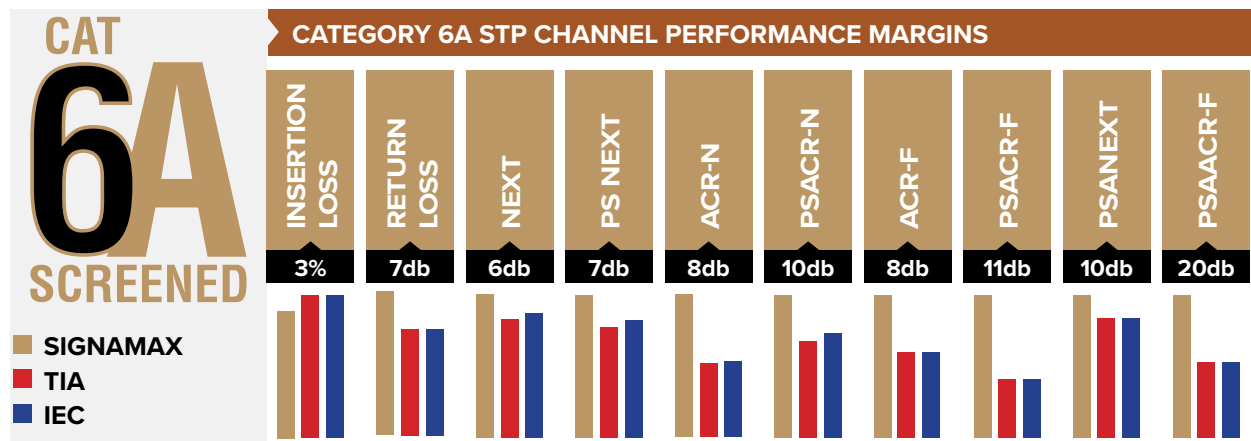
Healthcare



Data Centers



SOLUTIONS WITH ETL TESTED & VERIFIED RESULTS



Note: Test results are for USA made cable only.

Designed to work together & engineered to deliver guaranteed performance

The true benefit of working with an “end-to-end” provider is getting a single point of contact. Our “end-to-end” solution encompasses the keystone jack, the patch panel, the patch cords, and the cable but we offer so much more.

- High performance-to-price ratio that maximizes ROI
- Pre-sale network design help, so you can choose the optimal solution
- TAA compliance for government installations
- Post-sale support from an experienced US-based technical staff

CATEGORY 6 & 5e SYSTEMS:

- Exceeds ANSI/TIA-568-C.2 component performance specifications
- Offers bandwidth beyond 250 MHz and 100 MHz respectively
- Accommodates flexible communication infrastructure for VOIP, data, video, etc.

RECOMMENDED APPLICATIONS:

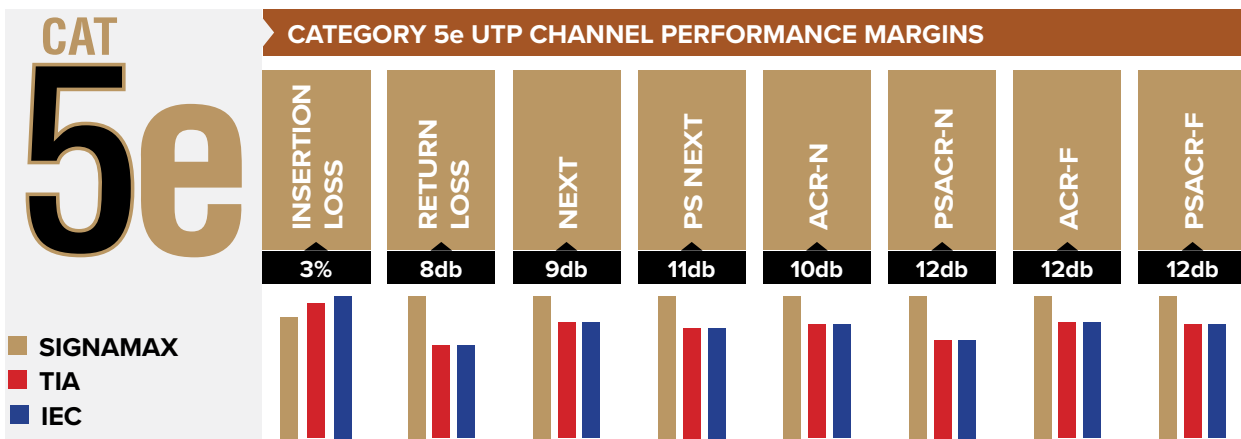
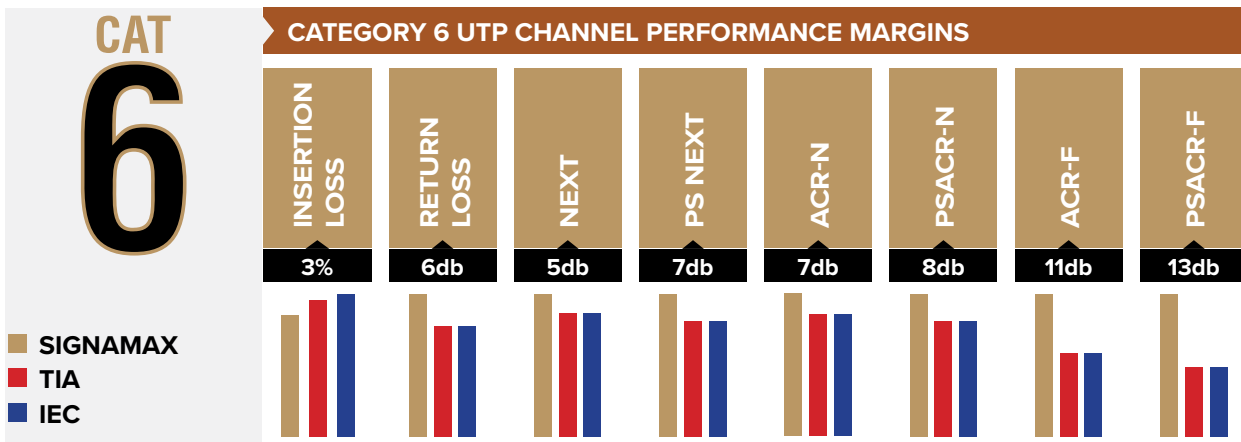
Commercial Buildings



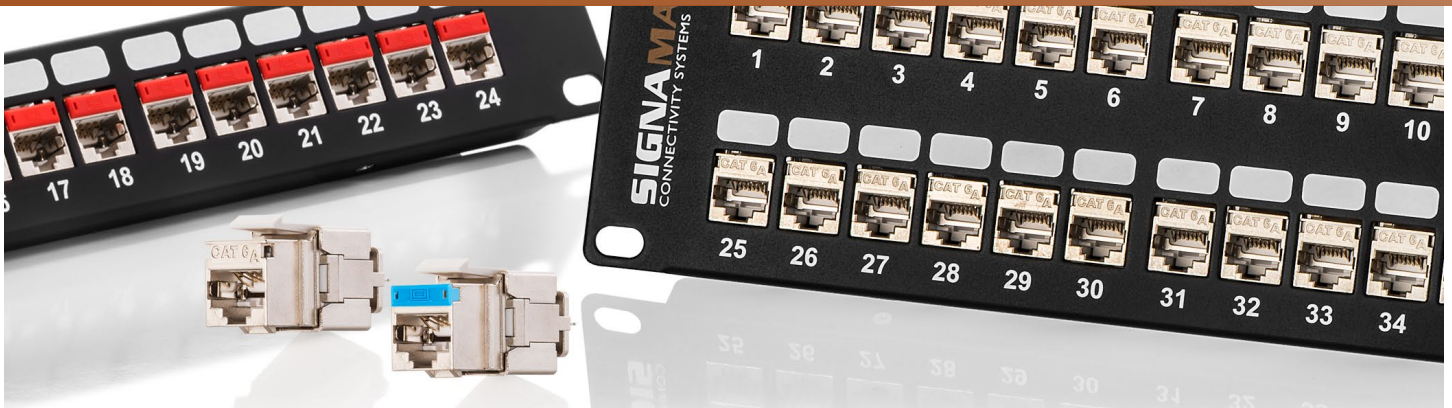
Education



Retail



Note: Test results are for USA made cable only.



CAT 6A STP SYSTEM

KEYSTONE JACKS

PART NO.	DESCRIPTION
KJS458MT-C6AC	Category 6A MT-Series Screened Keystone Jack, T568A/B Wiring
KJS458TL-C6AC	Category 6A Screened Toolless Keystone Jack, T568A/B Wiring

Standard circuit identification icons/dust covers are Light Ivory. Additional color options sold separately.

PATCH PANELS

PART NO.	DESCRIPTION
24458S-C6A	24-Port Category 6A MT-Series Screened Patch Panel, 1 RMU
48458S-C6A	48-Port Category 6A MT-Series Screened Patch Panel, 2 RMU
72458S-C6A	72-Port Category 6A MT-Series Screened Patch Panel, 2 RMU

PATCH CORDS

PART NO.	DESCRIPTION
C6AS-314CC-LFB	Category 6A 26 AWG Screened Patch Cord with Snag-Proof Boots
C6AS-328CC-LFB	Category 6A 28 AWG Screened Patch Cord with Snag-Proof Boots

Specify cable jacket color by substituting **CC** in P/N for the following: WH YE RD BU GN GY BK

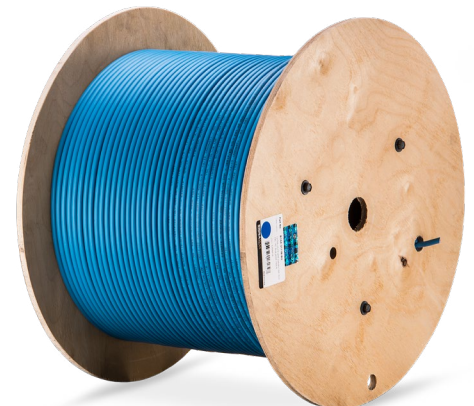
Specify cable length by substituting **L** in P/N for the following:

3: 3 ft **5**: 5 ft **7**: 7 ft **10**: 10 ft **15**: 15 ft **20**: 20 ft **25**: 25 ft

CABLE

PART NO.	DESCRIPTION
BC6A-2311B-CC	Category 6A F/UTP 4 pair 23 AWG solid cable, CMP, 1,000 ft (305 m), USA Made

Specify cable jacket color by substituting **CC** in P/N for the following: WH BU



Visit www.signamax.com for our full selection of models, options & part numbers or contact customer service.



CAT 6A UTP SYSTEM

KEYSTONE JACKS

PART NO.	DESCRIPTION
KJ458MT-C6AC	Category 6A MT-Series Keystone Jack, T568A/B Wiring, Light Ivory

For other colors add the following to P/N: WH DI YE OR RD BU GN GY BK

PATCH PANELS

PART NO.	DESCRIPTION
MD-Series - Sixfold 110-type Connector Blocks	
24458MD-C6AC	24-Port Category 6A MD-Series Patch Panel, 1 RMU
48458MD-C6AC	48-Port Category 6A MD-Series Patch Panel, 2 RMU
MT-Series - Packaged with Unscreened MT-Series Jacks	
24458-C6A	24-Port Category 6A MT-Series Patch Panel, 1 RMU
48458-C6A	48-Port Category 6A MT-Series Patch Panel, 2 RMU
72458-C6A	72-Port Category 6A MT-Series Patch Panel, 2 RMU

PATCH CORDS

PART NO.	DESCRIPTION
C6AS-314CC-LFB	Category 6A 26 AWG Screened Patch Cord with Snag-Proof Boots
C6AS-328CC-LFB	Category 6A 28 AWG Screened Patch Cord with Snag-Proof Boots

Specify cable jacket color by substituting **CC** in P/N for the following: WH YE RD BU GN GY BK

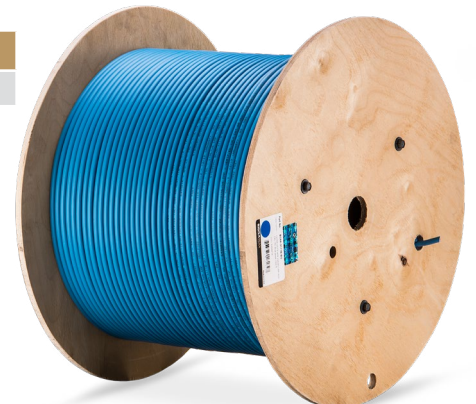
Specify cable length by substituting **L** in P/N for the following:

3: 3 ft **5:** 5 ft **7:** 7 ft **10:** 10 ft **15:** 15 ft **20:** 20 ft **25:** 25 ft

CABLE

PART NO.	DESCRIPTION
BC6A-2111B-CC	Category 6A U/UTP 4 pair 23 AWG solid cable, CMP, 1,000 ft (305 m), USA Made

Specify cable jacket color by substituting **CC** in P/N for the following: WH BU





CAT 6 SYSTEM

KEYSTONE JACKS

PART NO.	DESCRIPTION
KJ458MT-C6C	Category 6 MT-Series Keystone Jack, T568A/B Wiring, Light Ivory
KJ458MT25-C6C	Category 6 MT-Series Keystone Jack, T568A/B Wiring, Light Ivory, 25-Pack
KJ458EC25-C6	Category 6 EC-Series Keystone Jack, T568A/B Wiring, Light Ivory, 25-Pack

MT-Series color options add the following to P/N: WH DI YE OR RD BU GN GY BK

EC-Series color options add the following to P/N: WH YE OR RD BU GN BK

PATCH PANELS

PART NO.	DESCRIPTION
MD-Series - Sixfold 110-type Connector Blocks	
24458MD-C6C	24-Port Category 6 MD-Series Patch Panel, 1 RMU
48458MD-C6C	48-Port Category 6 MD-Series Patch Panel, 2 RMU
MT-Series - Packaged with Unscreened MT-Series Jacks	
24458-C6C	24-Port Category 6 MT-Series Patch Panel, 1 RMU
48458-C6C	48-Port Category 6 MT-Series Patch Panel, 2 RMU

PATCH CORDS

PART NO.	DESCRIPTION
C6C-128CC-LFB	Category 6 28 AWG Unscreened Patch Cord with Snag-Proof Boots
C6C-114CC-LFB	Category 6 24 AWG Unscreened Patch Cord with Snag-Proof Boots

Specify cable jacket color by substituting **CC** in P/N for the following: WH YE OR RD BU GN GY BK

Specify cable length by substituting **L** in P/N for the following:

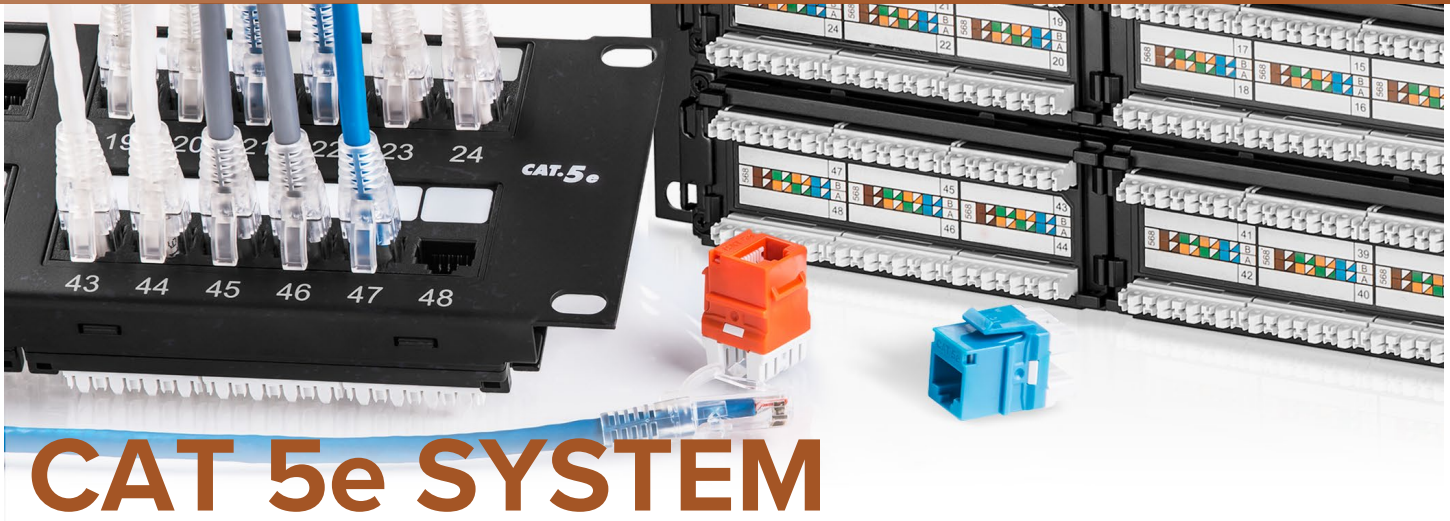
3: 3 ft **5:** 5 ft **7:** 7 ft **10:** 10 ft **15:** 15 ft **20:** 20 ft **25:** 25 ft

CABLE

PART NO.	DESCRIPTION
BC6-2111B-CC	Cat 6 Premium U/UTP 4 pair 23 AWG solid cable w/pair separator, CMP, 1,000 ft, USA Made
BC6-2110B-CC	Category 6 U/UTP 4 pair 23 AWG solid cable, CMP, 1,000 ft (305 m), USA Made
BC6-2110A-CC	Category 6 U/UTP 4 pair 23 AWG solid cable, CMP, 1,000 ft (305 m), Intl. Made
BC6-2120A-CC	Category 6 U/UTP 4 pair 23 AWG solid cable, CMR, 1,000 ft (305 m), Intl. Made

Specify cable jacket color by substituting **CC** in P/N for the following: WH BU





KEYSTONE JACKS

PART NO.	DESCRIPTION
KJ458MT-C5E	Category 5e MT-Series Keystone Jack, T568A/B Wiring, Light Ivory
KJ458MT25-C5E	Category 5e MT-Series Keystone Jack, T568A/B Wiring, Light Ivory, 25-Pack
KJ458EC25-C5E	Category 5e EC-Series Keystone Jack, T568A/B Wiring, Light Ivory, 25-Pack

MT-Series color options add the following to P/N: WH DI YE OR RD BU GN GY BK

EC-Series color options add the following to P/N: WH YE OR RD BU GN BK

PATCH PANELS

PART NO.	DESCRIPTION
MD-Series - Sixfold 110-type Connector Blocks	
24458MD-C5E	24-Port Category 5e MD-Series Patch Panel, 1 RMU
48458MD-C5E	48-Port Category 5e MD-Series Patch Panel, 2 RMU
MT-Series - Packaged with Unscreened MT-Series Jacks	
24458-C5E	24-Port Category 5e MT-Series Patch Panel, 1 RMU
48458-C5E	48-Port Category 5e MT-Series Patch Panel, 2 RMU

PATCH CORDS

PART NO.	DESCRIPTION
C5EC-114CC-LFB	Category 5e Unscreened Patch Cord with Snag-Proof Boots

Specify cable jacket color by substituting **CC** in P/N for the following: WH YE OR RD BU GN GY BK

Specify cable length by substituting **L** in P/N for the following:

3: 3 ft **5**: 5 ft **7**: 7 ft **10**: 10 ft **15**: 15 ft **20**: 20 ft **25**: 25 ft

CABLE

PART NO.	DESCRIPTION
BC5E-1110B-CC	Category 5e U/UTP 4 pair 24 AWG solid cable, CMP, 1,000 ft (305 m), USA Made
BC5E-1110A-CC	Category 5e U/UTP 4 pair 24 AWG solid cable, CMP, 1,000 ft (305 m), Intl. Made
BC5E-1120A-CC	Category 5e U/UTP 4 pair 24 AWG solid cable, CMR, 1,000 ft (305 m), Intl. Made

Specify cable jacket color by substituting **CC** in P/N for the following: WH BU



Visit www.signamax.com for our full selection of models, options & part numbers or contact customer service.

SIGNAMAX CERTIFIED CONTRACTOR PROGRAM

YOUR ADVANTAGE STARTS HERE - QUALITY, SUPPORT, INNOVATION, & EXPERIENCE

The SIGNAMAX Certified Contractor Program was created to make a network of partners to carry out the design, installation, & maintenance of our products to ensure the longevity of our end user's investment. Our program is built for those companies and individuals working in the cable installation, infrastructure, and design environments who know there is more to building a cabling system than just buying good quality cable and connecting hardware.

As a SIGNAMAX certified partner the following advantages are yours:

- Direct access to industry trained professionals with several RCDD's on staff
- Quality products warranted to meet or exceed the specifications of standard organizations including, but not limited to ISO/IEC & TIA
- Rewards Program that is based on quarterly purchases and year ending prizes
- Only certified partners can offer the Signamax 25-Year Cable System Warranty

For further information visit: www.signamax.com/certified-contractor/ or email us at: contractors@signamax.com



SIGNAMAX WARRANTY PROGRAM

PROTECT YOUR INFRASTRUCTURE WITH SOME PEACE OF MIND

SIGNAMAX Cabling System Warranty

The Signamax Cabling System is based on Signamax brand certified components, purchased through official distribution channels, that has been installed by one of our Certified Partners with the title of Signamax Authorized Installer or Signamax Authorized Consultant. The system is covered for material and labor for 25-years from the date your installation is approved and registered with Signamax. In the event of any problems, Signamax can be contacted directly to work with you and your Signamax certified partner to promptly resolve the issue.

This warranty assures that your system will be:

- Free from defects
- Meet or exceed ANSI/TIA-568 and ISO/IEC 1180 cabling performance specifications
- Support any current or future application designed to operate over the applicable system
- Quickly be repaired or replaced

For further information visit: www.signamax.com/certified-contractor/warranty/ or email us at: warranty@signamax.com



SIGNAMAX™

999 NW 159th Drive, Miami, FL 33169
T: 305-944-7710/800 446 2377 E: sales@signamax.com

CONNECT WITH US



www.signamax.com

E2E-CS2018
01-08-2018