

Standardized UL listed
Pre-wired Unified Power[™]
 access power management systems



Why ProWire[™]

ProWire delivers a UL/CUL certified pre-wired Unified Power solution that is ready-to-install, simplifying and standardizing access installations across an enterprise.

ProWire models come standard or networked for intelligent power monitoring and are designed with quick-connect terminal strips to streamline Mercury or Software House panel installation.

Precision factory wiring of system power, lock relay power, system faults and panel communication elimi-

nates the need for field assembly so integrators and end users can establish consistent equipment standards for uniform operation, maintenance and servicing.

Available in four, eight and sixteen door configurations, ProWire systems are 100% factory tested, **UL/CUL certified** and can be drop-shipped direct to the job site.

ProWire Unified Power – the next level of innovation and service from LifeSafety Power, the recognized leader of access power management solutions.

Plug and play - Pre-wired terminal strips, pre-installed standoffs and accompanying panel mounting hardware simplify final panel assembly.

Precision assembly - Factory wiring harnesses connect to authentic panel connector terminals for a fast and reliable electrical connection.

Detailed documentation - Wiring CADs for system design and twisted pair color coded cable harnesses with termination connectors eliminate lock wiring complexity.

High performance - ProWire systems are constructed and tested to rigorous factory standards with tie wrap or optional wire duct cable management.

Trusted UL/CUL - For guaranteed reliability and seamless system operation, ProWire is agency certified as an integrated access power management system with Mercury or Software House access panels.

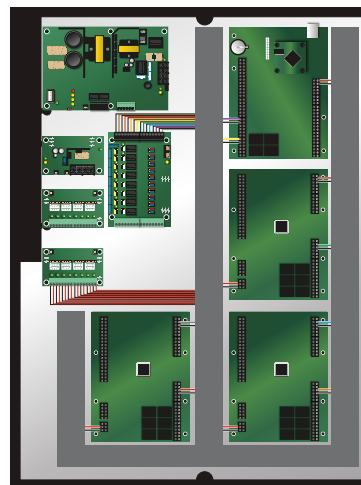
Wired points: system, lock, communication, faults



FAULT WIRING
 power supply system and ac faults



SYSTEM POWER
 class II power wired out to each access panel



tie wrap / wire duct options



LOCK POWER
 cable harness from C8, M8 lock control inputs to access panel relay outputs



RS-485 COMMUNICATION
 proper shielded, jacketed cable daisy chained throughout




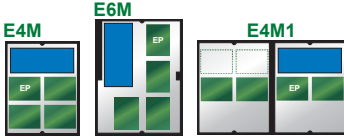


TAMPER SWITCH



ProWire Regulatory Compliance | UL294 | UL603 | UL1076 | ULC S318 | ULC S319 | CSA 22.2 #205 | CSFM | CE



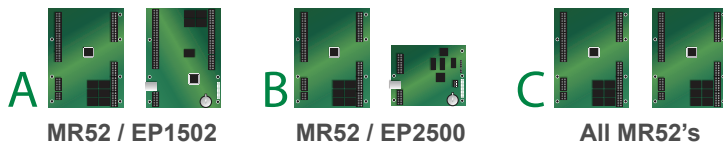
Mercury | ProWire

Doors	Power/Outputs	Enclosure	Cabling	Base Model		*Wiring	Panel Layout
4DR	2A/12V and 2A/24V Outputs: STD: 8 aux, 4 lock NET: 8 managed	E2M 20 x 16 x 4.5	Tie wrap	Standard	FPO75-B100C4D8PE2M /	T4-A T4-B T4-C	
		E4M 24 x 20 x 4.5		Networked	FPO75-B100M8PNL4E2M /		
				Standard	FPO75-B100C4D8PE4M /		
				Networked	FPO75-B100M8PNL4E4M /		
8DR	4A/12V and 4A/24V Outputs: STD: 16 aux, 8 lock NET: 16 aux, 8 mgd	E4M 24 x 20 x 4.5	Tie wrap	Standard	FPO150-B100C82D8PE4M /	T8-A T8-B T8-C	
		E4M1 24 x 20 x 4.5		Networked	FPO150-B100D28PM8NL4E4M /		
		E6M 30 x 23 x 6.5		Standard	FPO150-B100C82D8PE4M1 /		
				Networked	FPO150-B100D28PM8NL4E4M1 /		
		E6M 30 x 23 x 6.5	Panduit style	Standard	FPO150-B100C82D8PE6M /	P8-A P8-B P8-C	
				Networked	FPO150-B100D28PM8NL4E6M /		
				Standard	FPO150-B100C82D8PE6M /		
				Networked	FPO150-B100D28PM8NL4E6M /		
16DR	12A/12V and 10A/24V Outputs: STD: 24 aux, 16 lock NET: 24 aux, 16 mgd	E4M1 24 x 20 x 4.5	Tie wrap	Standard	FPO150/250-2C83D8PE4M1 /	T16-A T16-B T16-C	
		E6M1 30 x 23 x 6.5		Networked	FPO150/250-3D8P2M8NL4E4M1 /		
		E8M1 36 x 30 x 4.5		Standard	FPO150/250-2C83D8PE6M1 /		
				Networked	FPO150/250-3D8P2M8NL4E6M1 /		
		E8M2 36 x 30 x 4.5		Standard	FPO150/250-2C83D8PE8M1 /		
				Networked	FPO150/250-3D8P2M8NL4E8M1 /		
		E6M1 30 x 23 x 6.5	Panduit style	Standard	FPO150/250-2C83D8PE6M1 /	P16-A P16-B P16-C	
				Networked	FPO150/250-3D8P2M8NL4E6M1 /		
		E8M1 36 x 30 x 4.5		Standard	FPO150/250-2C83D8PE8M1 /		
				Networked	FPO150/250-3D8P2M8NL4E8M1 /		
		E8M2 36 x 30 x 4.5		Standard	FPO150/250-2C83D8PE8M2 /		
				Networked	FPO150/250-3D8P2M8NL4E8M2 /		
4DR RM	2A/12V and 2A/24V Outputs: STD: 8 lock NET: 8 managed	R2U GEMINI RACK DRAWER	Tie wrap	Standard	RGM75B-C8PZ /	T4-A T4-B T4-C	
				Networked	RGM75B-M8PNZ /		

*Complete model number requires wiring suffix (example FPO150-B100C82D8PE6M / T8-A)

Wire Management Door Count
 T = Tie wrap 4, 8, 16
 P = Panduit duct style

Mercury Wiring Combinations



See the ProWire Mercury datasheet and Wiring Guide for complete specifications

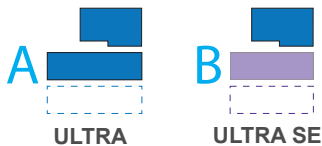
Software House | ProWire

Doors	Power/Outputs	Enclosure	Cabling	Base Model		*Wiring	Panel Layout
8DR	6A/12V and 6A/24V Outputs: STD: 8 aux, 8 lock NET: 8 aux, 8 mgd	E4S 24 x 20 x 4.5	Tie wrap	Standard	FPO75/150-C8D8E4S /	T8-A T8-B	
				Networked	FPO75/150-D8M8NL4E4S		
		E6S 30 x 23 x 6.5	Tie wrap	Standard	FPO75/150-C8D8E6S /	T8-A T8-B	
				Networked	FPO75/150-D8M8NL4E6S		
		E6S 30 x 23 x 6.5	Panduit style	Standard	FPO75/150-C8D8E6S /	P8-A P8-B	
				Networked	FPO75/150-D8M8NL4E6S		
16DR	12A/12V and 10A/24V Outputs: STD: 8 aux, 16 lock NET: 8 aux, 16 mgd	E6S 30 x 23 x 6.5	Tie wrap	Standard	FPO150/250-E6S /	T16-A	
				Networked	FPO150/250-NL4E6S /		
		E8S 36 x 30 x 4.5	Tie wrap	Standard	FPO150/250-2C82D8E8S /	T16-A T16-B	
				Networked	FPO150/250-2D82M8NL4E8S /		
		E8S 36 x 30 x 4.5	Panduit style	Standard	FPO150/250-2C82D8E8S /	P16-A P16-B	
				Networked	FPO150/250-2D82M8NL4E8S /		


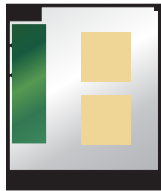
*Complete model number requires wiring suffix (example *FPO75/150-C8D8E6S / T8-A*)

Wire Management Door Count
 T = Tie wrap 8, 16
 P = Panduit duct style

Software House Wiring Combinations



AMAG | ProWire coming soon

Doors	Power/Outputs	Enclosure	Cablings	Base Model		*Wiring	Panel Layout
8DR	4A/12V and 4A/24V Outputs: STD: 8 aux, 8 lock NET: 8 aux, 8 mgd	E6A 30 x 23 x 6.5	Tie wrap	Standard	FPO150-B100C8D8E6A /	T8-A	
				Networked	FPO150-B100D8M8NL4E6A /		
		E6A 30 x 23 x 6.5	Panduit style	Standard	FPO150-B100C8D8E6A /	P8-A	
				Networked	FPO150-B100D8M8NL4E6A /		
16DR	12A/12V and 10A/24V Outputs: STD: 8 aux, 16 lock NET: 8 aux, 16 mgd	E8A 36 x 30 x 4.5	Tie wrap	Standard	FPO150/250-2C82D8E8A /	T16-A	
				Networked	FPO150/250-2D82M8NL4E8A /		
		E8A 36 x 30 x 4.5	Panduit style	Standard	FPO150/250-2C82D8E8A /	P16-A	
				Networked	FPO150/250-2D82M8NL4E8A /		

*Complete model number requires wiring suffix (example *FPO150-B100C8D8E6A / T8-A*)

Wire Management Door Count
 T = Tie wrap 8, 16
 P = Panduit duct style

AMAG Wiring Combinations

