


# B Series Control Panel

## Installer Quick Start Guide

Use this guide to quickly install a Bosch B6512/B5512/B4512/B3512 security system. Additional information is found in the Control Panels Installation Manual.

 When you see this icon, use your smart phone with a QR code reader app to view helpful videos.

### For additional training:

#### Bosch YouTube channel:

1. Scan QR code.
2. Scroll down.
3. Locate and select your region for additional videos.

#### B Series Installer's Site:

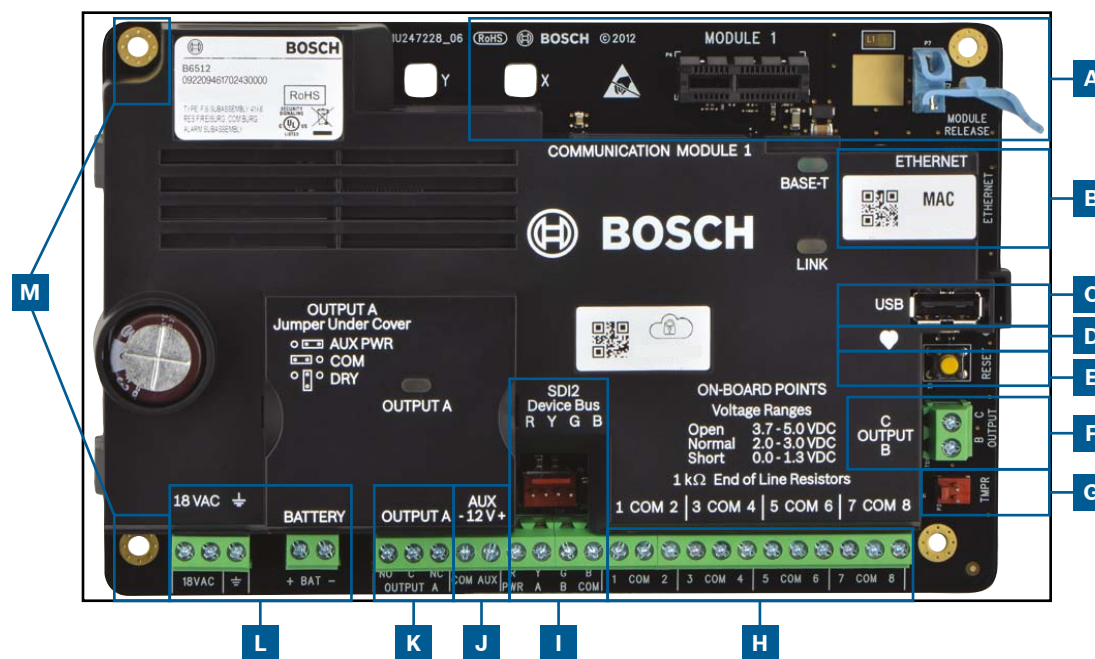


### Installation sequence:

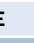
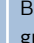
Scan and follow these videos in sequential order to the steps listed below.



### Control panel component layout



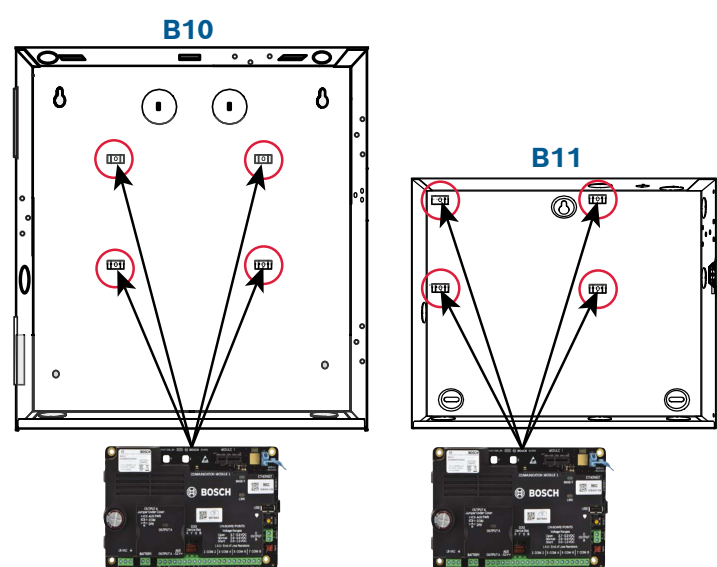
### Control panel connection location

Location	Item	Description	Specification
A	MODULE 1	Plug-in comm module	Communication module options
B	ETHERNET	Ethernet port	built-in on-board Ethernet connection (10Base-T/100Base-T)
C	USB	USB port	USB connector (for firmware updates and RPS connection)
D		Heartbeat LED	Slow=normal, rapid=service mode
E	Reset	Reset switch	Hold five seconds to enter or exit service mode
F	B C	Outputs B(2) C(3)	Open collector, 50mA, active low
G	TMPR	Tamper	Optional tamper switch connector (ICP-EZTS)
H	1 COM 2 to 7 COM 8	Alarm inputs	End Of Line (EOL) resistor supervised alarm inputs
I	R Y G B	SDI2 bus	SDI2 device bus
J	COM AUX	Aux power	12 VDC, 800mA
K	NO C NC	Output A(1)	Programmable relay output
L	+ BAT - 18 VAC, 	Battery, Earth ground, 18 VAC	Primary/Secondary power and Earth Ground connections
M	Mounting	Mounting holes	Mounting holes for control panel

### Step 1 Mounting the control panel M

#### Bosch tips:

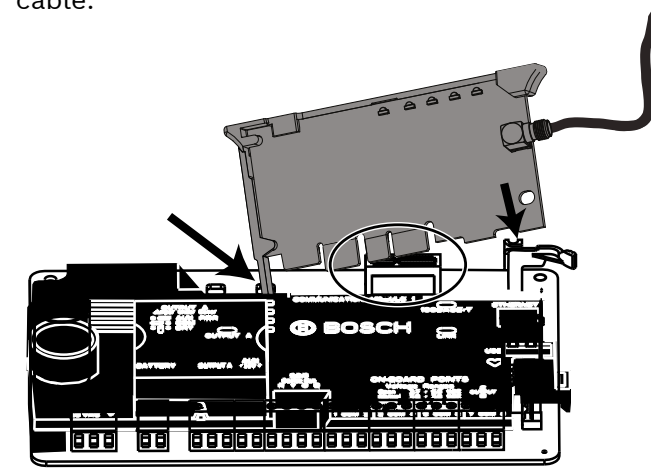
- ▶ Mount the enclosure prior to mounting the control panel.
- ▶ Mount control panel into enclosure with hardware provided.



### Step 2 Installing a communication module A

#### Bosch tips:

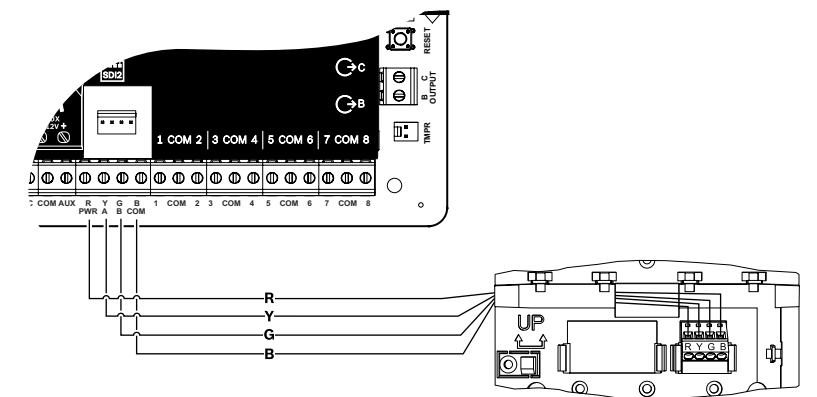
- ▶ Insert leg of module into slot marked "x."
- ▶ **Cellular:** Place antenna on top of enclosure and run cable inside, then connect to module.
- ▶ **PSTN:** Connect module to a D166 (RJ31x) jack using a D161/D162 cable.



### Step 3 Installing a keypad I

#### Bosch tips:

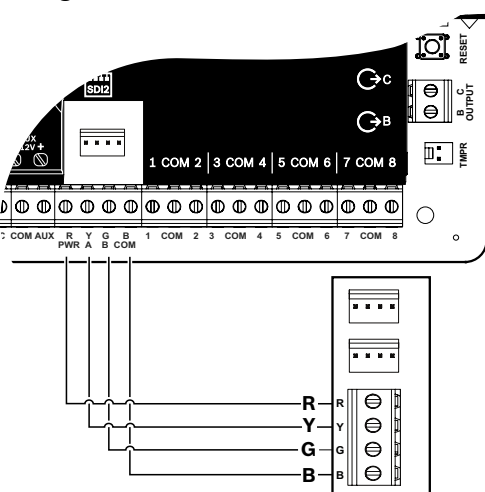
- ▶ When installing a compatible Bosch keypad, refer to keypad installation guide for specific wiring diagrams. Basic keypad wiring is shown below.
- ▶ When installing more than one keypad, refer to keypad installation guide for unique address settings.



### Step 4 Installing expansion modules I

#### Bosch tips:

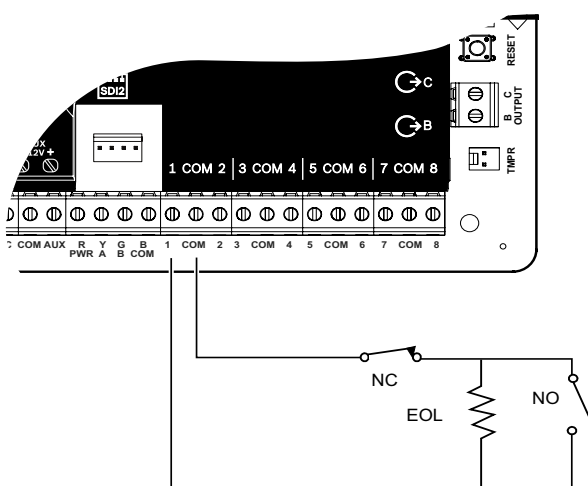
- ▶ If installing more than one device that is similar, refer to the module's installation guide for address settings (for example, two of the same device).
- ▶ If installing a RADION B810 wireless receiver, use address 1 only.



### Step 5 Installing wired inputs H

#### Bosch tips:

- ▶ If using a dual EOL, 2K EOL, or no EOL, refer to control panel installation guide for control panel settings.
- ▶ If using 2-wired powered devices, use a B201 or D125B.

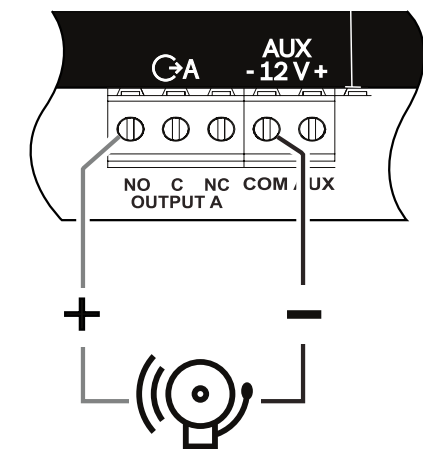


**NOTE:** Not all modules are available in all regions.

### Step 6 Installing a bell or siren J K

#### Bosch tips:

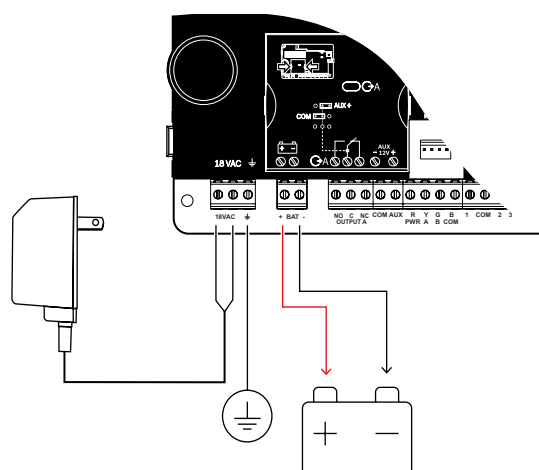
- ▶ Output A can supply up to 1 A at 12 VDC when sourced from a control panel (jumper in AUX PWR position).
- ▶ Output A can support up to 3 amps at 12 VDC when using a separate power supply (jumper in DRY position).
- ▶ Output B and C are open collectors and are limited to 50 mA at 12 VDC.



### Step 7 Powering the control panel L

#### Bosch tips:

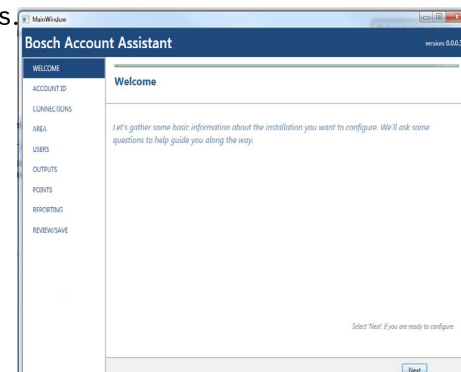
- ▶ Connect wires to control panel before applying battery or AC power.
- ▶ Connect earth ground to a cold water pipe (copper) or other solid connection to ground.



### Step 8 Create panel accounts using RPS B C

#### Bosch tips:

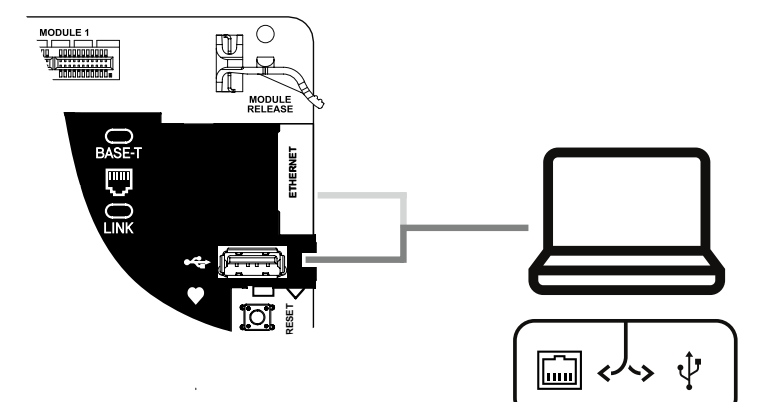
- ▶ If configuring using the Installer Services Portal, go to **Step 11**.
- ▶ Install Remote Programming Software (RPS) v6.06 or later. You can download RPS from the RPS product page.
- ▶ Follow the RPS Account Assistant instructions to create new control panel accounts. The Account Assistant helps you create a new panel account.
- ▶ If RPS is not available, keypad programming is an option. Refer to keypad installation instructions.



### Step 9 Connecting the control panel using RPS B C

#### Bosch tips:

- ▶ Connect a computer with RPS installed. Direct RPS connections can be done through a USB connection or Ethernet connection.
- ▶ The Account Assistant automatically launches when you create a new account.
- ▶ For USB direct connection, use a B99 USB cable.





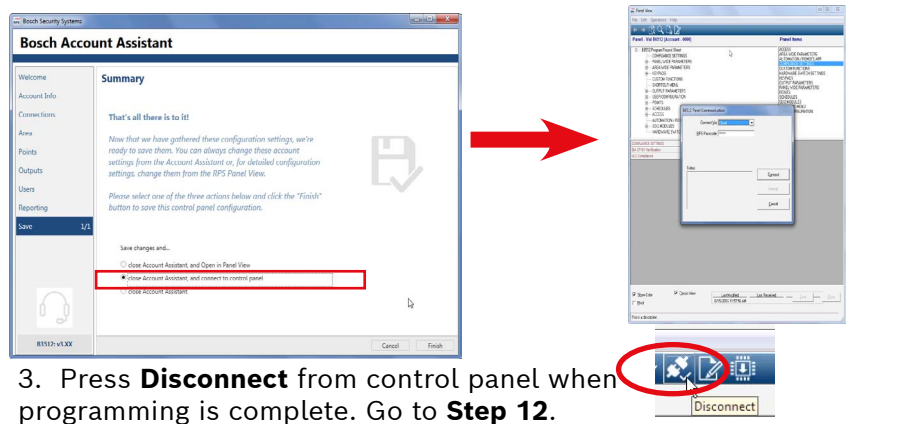
# B Series Control Panel

## Installer Quick Start Guide

### Step 10 Configure and send to control panel using RPS

**Bosch tips:**

- ▶ Program your configuration information using Account Assistant.
- 1. Press **close Account Assistant, and connect to control panel.** This opens the **Panel Communication** window.
- 2. Press **Connect** and send configuration programming to control panel.



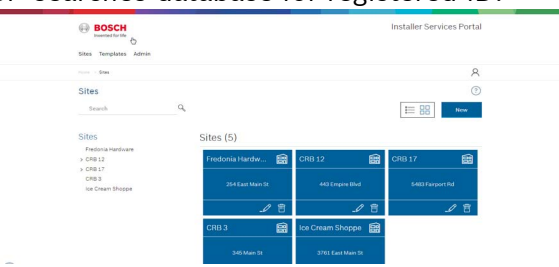
- 3. Press **Disconnect** from control panel when programming is complete. Go to **Step 12.**

### Step 11a Accessing the Installer Service Portal and create panel account

**Bosch tips:**

**Using the Installer Services Portal:** (Not in all regions)

- ▶ Before you can use Installer Services Portal you must register for services at: <https://sp.boschsecurity.com>.
- ▶ Make sure the control panel is connected to the network.
- 1. Log into the Installer Services Portal.
- 2. Click on **New** and select **Device** to create a panel account.
- 3. Add panel account information.
- 4. Activate CloudID. ISP searches database for registered ID.
- 5. Select **Activate**.
- 6. Click **Add Panel**.



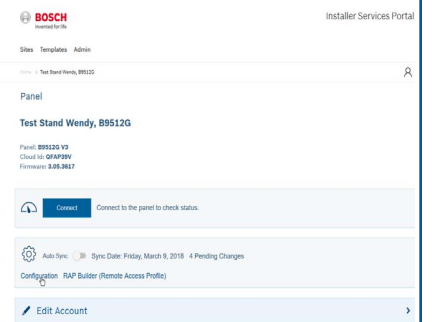
### Step 11b Connect and send using the Installer Service Portal

**Bosch tips:**

**Using the Installer Services Portal:**

- ▶ Search or select device to connect to a control panel. Type in panel account name in the Search field to locate new account.

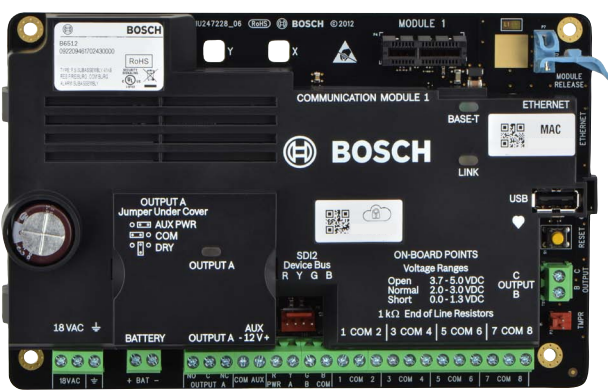
1. Select the panel account.
2. Click **Connect**.
3. Click **Configuration**. Program your configuration information.
4. Click the 3 vertical dots and select **Push Pending Changes to Panel** to send configuration.
5. Click **Disconnect** when configuration is complete.



## B Series control panel accessories (partial list)

**Note:** Not all products and features are available in all regions. Consult your Bosch representative or product datasheets for details.

### Control panel



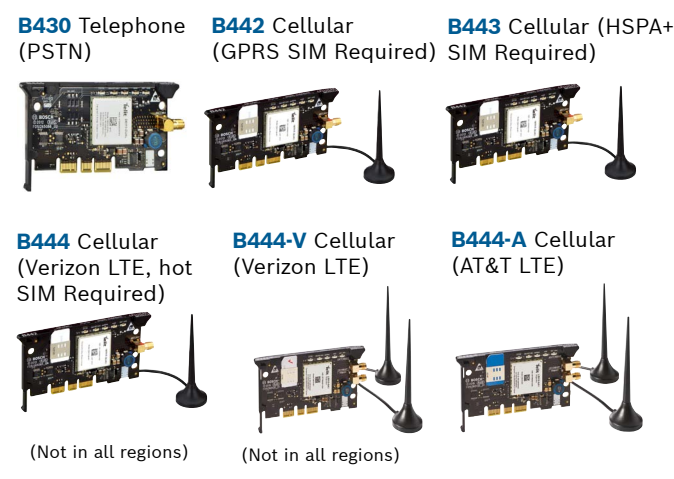
### Power



D135A Low-Battery Disconnect Module

\*Country specific, variants will apply

### Communicators



(Not in all regions)

(Not in all regions)

B450 Remote Cellular Interface



### Keypads



(Not in all regions)

(Not in all regions)

### RFID tags (for Readers & B942 Keypads)

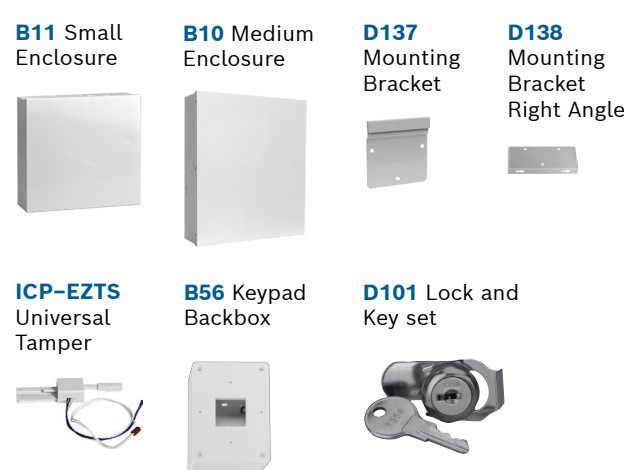


### IP camera integration

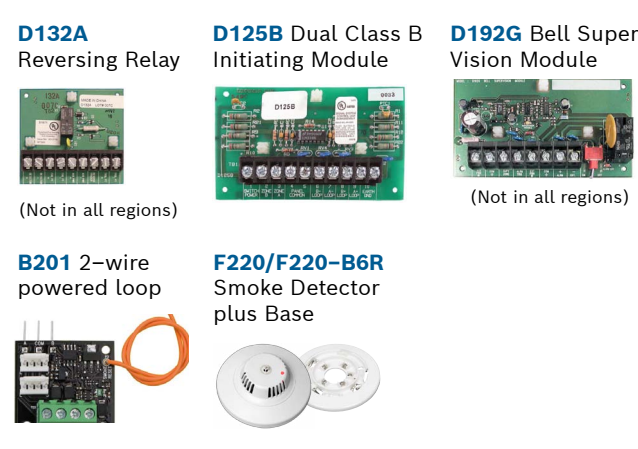
Any Bosch IP camera



### Enclosures & accessories



### Residential fire



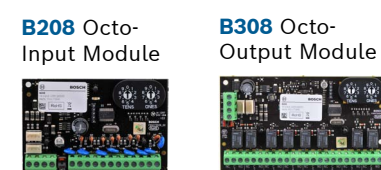
(Not in all regions)

(Not in all regions)

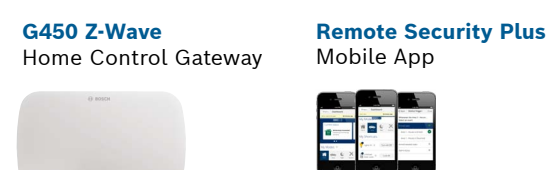
### Access modules



### I/O expansion modules

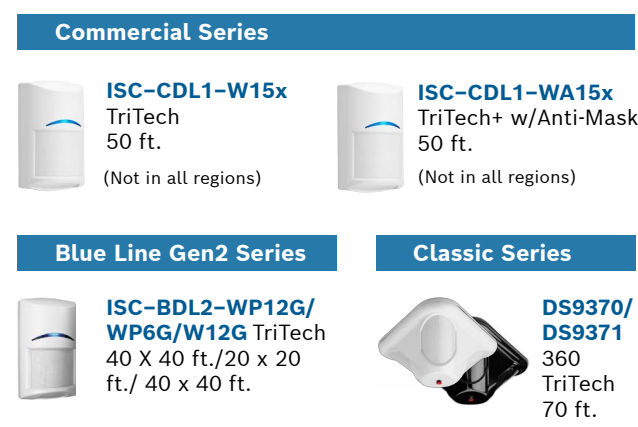


### \*Home automation



\*Home automation may not be available in all regions. Consult your Bosch representative for details.

### Wired motion detectors



### Step 12 Test the system

After system installation and control panel programming, you must perform a complete system test. A complete system test includes testing the control panel, all devices, and communication destinations for proper operation.

**Bosch tips:**

- ▶ Perform a Walk Test
  1. Select **Actions**.
  2. Select **Test**.
  3. Select **Walk Test**.
  4. Choose a test to run.
- ▶ Send a test report

(B942 is keypad shown)



## FAQs

**What is my default code?**

User Code: **123456**  
Installer Code: **123**

**How do I use Output B and C?**

Outputs B and C are Open Collector Outputs. Wiring can be found in control panel installation manual, section heading **Open Collector Outputs**.

**How do you remotely turn on and turn off the control panel?**

This can be done through the use of the Remote Security Control App.

**How do I connect directly to the control panel with Ethernet?**

By default, the control panel is set up to auto detect and negotiate a connection to RPS when an ethernet cable is connected between them.

**What do I need to be able to send personal notifications?**

SMS (Text) messages require the use of a cellular module and emails can be sent by either an Ethernet or Cellular connection.

**How do I enter "Service Mode"?**

Press and hold the yellow reset button on the control panel for 5 seconds (repeat to exit).

## Where can I go for additional information?

[www.boschsecurity.com](http://www.boschsecurity.com)

Bosch Security Systems B.V.  
Torenallee 49  
5617 BA Eindhoven  
Netherlands

## 2 | Specifications

Dimensions	37 cm x 32 cm x 8.9 cm (14.5 in x 12.5 in x 3.5 in)
Color	White
Compatible Lockset (optional)	D101 Lock and Key Set
Compatible Tamper Switch (optional)	ICP-EZTS Tamper Switch D110 Tamper Switch
Material	1.0 mm (20 gauge) cold-rolled steel

DE-de: Für Dokumentation in Ihrer Sprache, klicken Sie hier <https://de.boschsecurity.com/de>  
El-gr: Μεταβείτε στη διεύθυνση <https://gr.boschsecurity.com/el/> για την τεκμηρίωση σε αυτήν τη γλώσσα.  
Es-es: Visite <https://es.boschsecurity.com/es/> para obtener documentación en este idioma.  
Fr-fr: Accédez à l'adresse <https://fr.boschsecurity.com/fr/> pour obtenir la documentation dans cette langue.  
Hu-hu: A honosított dokumentációt lásd a <https://hu.boschsecurity.com/hu/> oldalon.  
It-it: Andare a <https://it.boschsecurity.com/it/> per la documentazione in questa lingua.  
Nl-nl: Voor de documentatie in uw taal, ga naar <https://www.boschsecurity.com/nl/nl>  
Pl-pl: Dokumentacja w tym języku znajduje się w witrynie <https://pl.boschsecurity.com/pl/>  
Pt-br: Acesse <http://pt.boschsecurity.com/pt/> para obter a documentação neste idioma.  
SE-sv: For documentation in this language, go to <https://www.boschsecurity.com/xn/en/>

### Reading Bosch Security Systems, Inc. Product Date Codes

For Product Date Code information, refer to the Bosch Security Systems, Inc. Web site at: <http://www.boschsecurity.com/datecodes/>.



## Medium Control Panel Enclosure B10

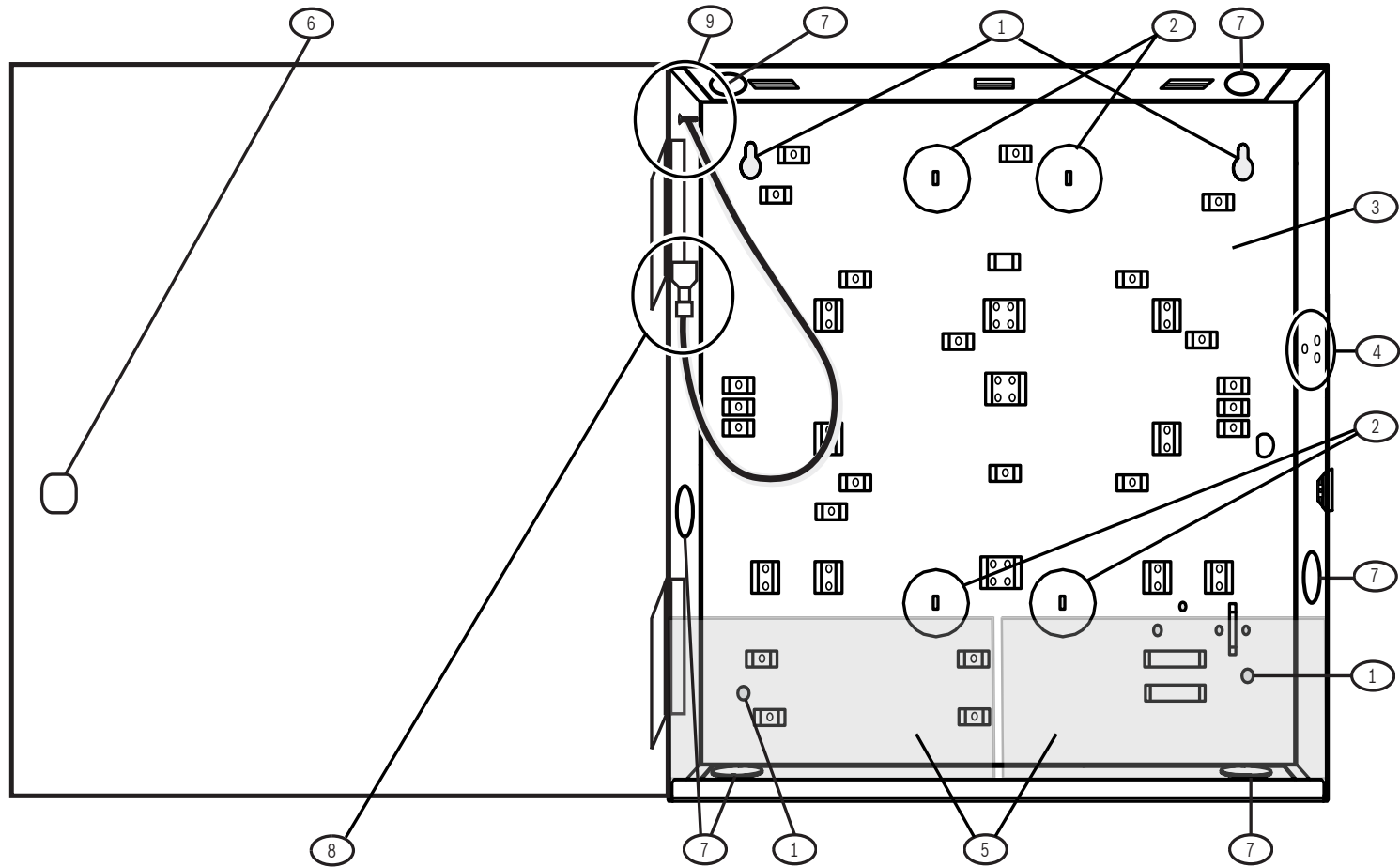


en Installation Guide



# 1 | Overview

This enclosure is compatible with select Bosch intrusion products, and can hold up to two batteries.



Callout	Description
1	Enclosure mounting holes (4). Bosch recommends using #10 screws and wall anchors to install.
2	Wire knockouts (4)
3	Control panel mounting location
4	Tamper switch mounting location
5	Battery mounting location (up to 2 - 7Ah batteries)
6	Lockset mounting location
7	Conduit knockouts (6) 4 - 12.7mm (1/2in), 2 - 19.05mm (3/4 in)
8	Grounding (bonding) connection to enclosure door
9	Grounding (bonding) connection for door only. Do not connect any other wires to this lug.