


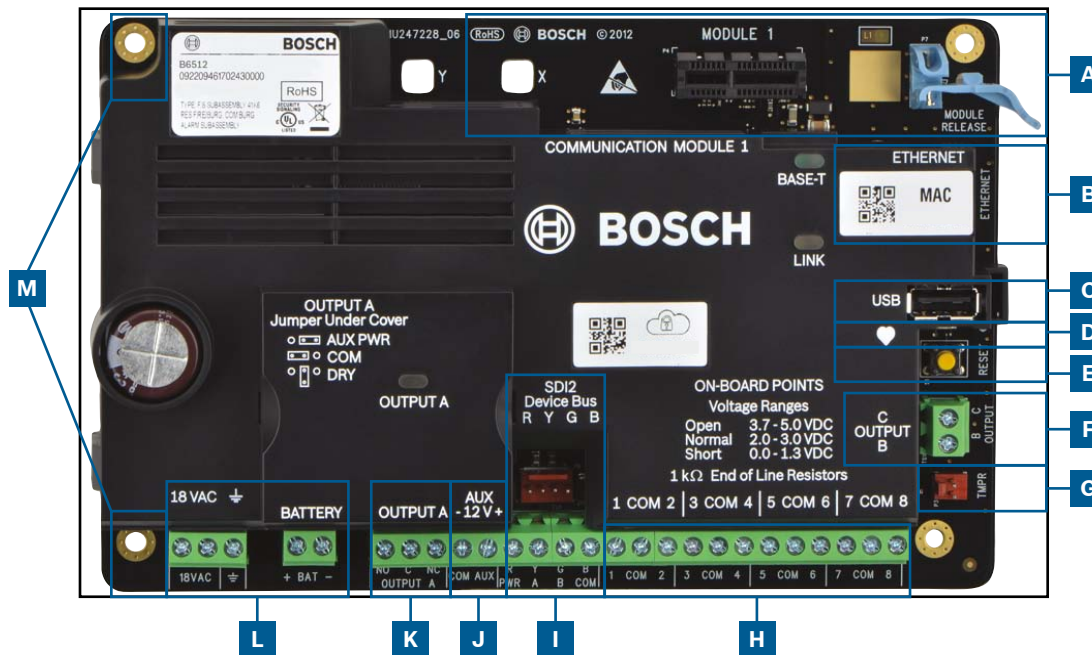
# B Series Control Panel

## Installer Quick Start Guide


Use this guide to quickly install a Bosch B6512/B5512/B4512/B3512 security system. Additional information is found in the Control Panels Installation Manual.

 When you see this icon, use your smart phone with a QR code reader app to view helpful videos.

### Control panel component layout



### Control panel connection location

Location	Item	Description	Specification
A	MODULE 1	Plug-in comm module	Communication module options
B	ETHERNET	Ethernet port	built-in on-board Ethernet connection (10Base-T/100Base-T)
C	USB	USB port	USB connector (for firmware updates and RPS connection)
D		Heartbeat LED	Slow=normal, rapid=service mode
E	Reset	Reset switch	Hold five seconds to enter or exit service mode
F	B C	Outputs B(2) C(3)	Open collector, 50mA, active low
G	TMPR	Tamper	Optional tamper switch connector (ICP-EZTS)
H	1 COM 2 to 7 COM 8	Alarm inputs	End Of Line (EOL) resistor supervised alarm inputs
I	R Y G B	SDI2 bus	SDI2 device bus
J	COM AUX	Aux power	12 VDC, 800mA
K	NO C NC	Output A(1)	Programmable relay output
L	+ BAT - 18 VAC, 18 VAC	Battery, Earth ground, 18 VAC	Primary/Secondary power and Earth Ground connections
M	Mounting	Mounting holes	Mounting holes for control panel

### For additional training:

#### Bosch YouTube channel:

1. Scan QR code.
2. Scroll down.
3. Locate and select your region for additional videos.

#### B Series Installer's Site:



### Installation sequence:

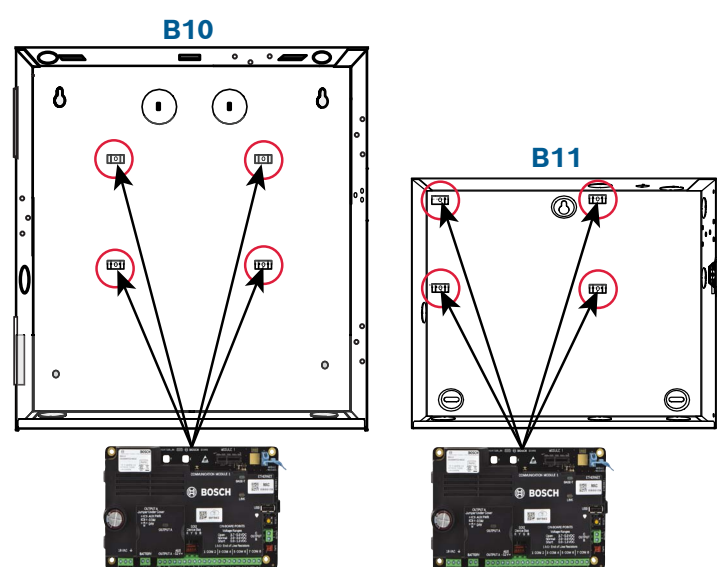
Scan and follow these videos in sequential order to the steps listed below.



### Step 1 Mounting the control panel M

#### Bosch tips:

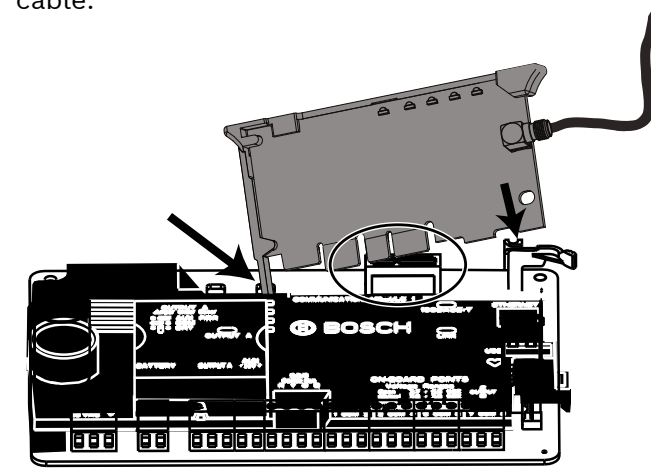
- ▶ Mount the enclosure prior to mounting the control panel.
- ▶ Mount control panel into enclosure with hardware provided.



### Step 2 Installing a communication module A

#### Bosch tips:

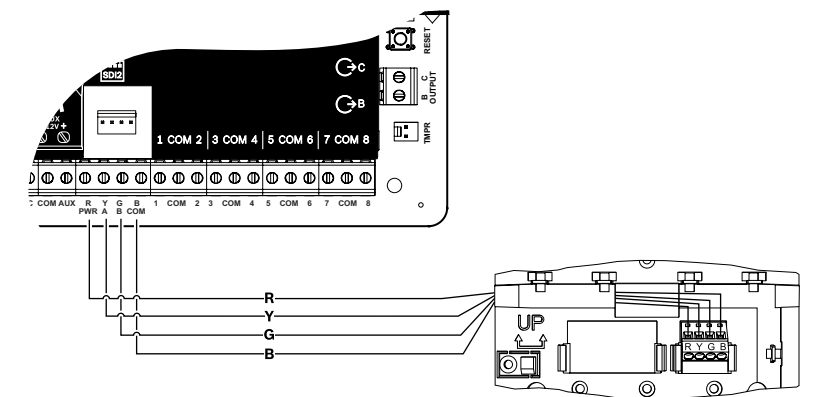
- ▶ Insert leg of module into slot marked "x."
- ▶ **Cellular:** Place antenna on top of enclosure and run cable inside, then connect to module.
- ▶ **PSTN:** Connect module to a D166 (RJ31x) jack using a D161/D162 cable.



### Step 3 Installing a keypad I

#### Bosch tips:

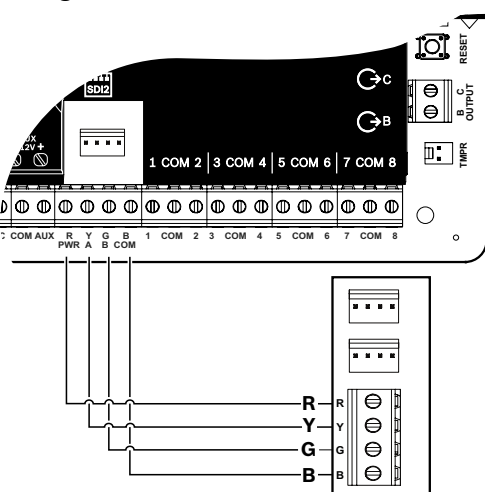
- ▶ When installing a compatible Bosch keypad, refer to keypad installation guide for specific wiring diagrams. Basic keypad wiring is shown below.
- ▶ When installing more than one keypad, refer to keypad installation guide for unique address settings.



### Step 4 Installing expansion modules I

#### Bosch tips:

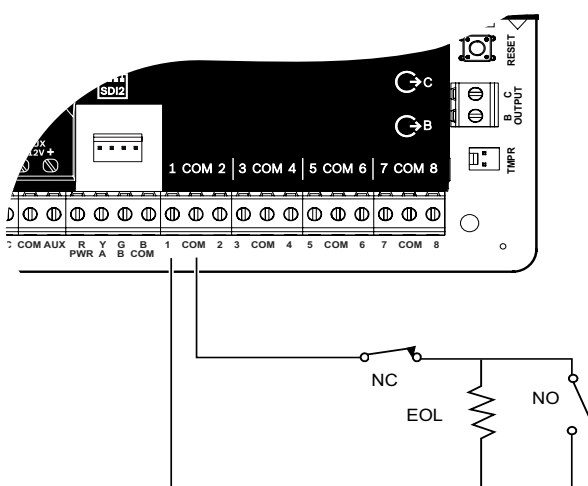
- ▶ If installing more than one device that is similar, refer to the module's installation guide for address settings (for example, two of the same device).
- ▶ If installing a RADION B810 wireless receiver, use address 1 only.



### Step 5 Installing wired inputs H

#### Bosch tips:

- ▶ If using a dual EOL, 2K EOL, or no EOL, refer to control panel installation guide for control panel settings.
- ▶ If using 2-wired powered devices, use a B201 or D125B.

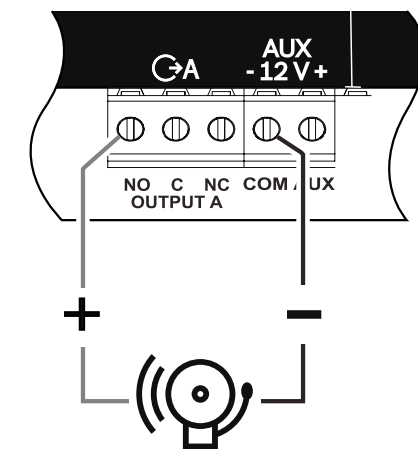


**NOTE:** Not all modules are available in all regions.

### Step 6 Installing a bell or siren J K

#### Bosch tips:

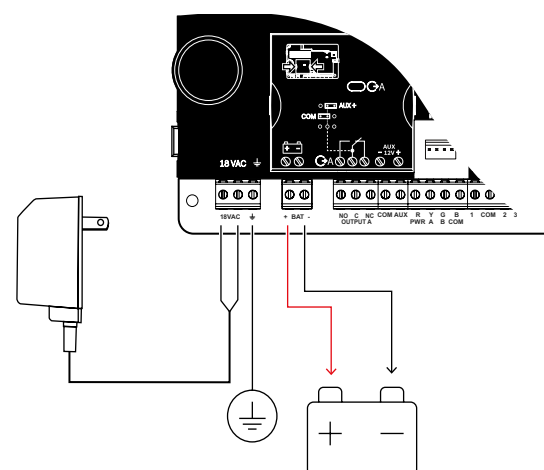
- ▶ Output A can supply up to 1 A at 12 VDC when sourced from a control panel (jumper in AUX PWR position).
- ▶ Output A can support up to 3 amps at 12 VDC when using a separate power supply (jumper in DRY position).
- ▶ Output B and C are open collectors and are limited to 50 mA at 12 VDC.



### Step 7 Powering the control panel L

#### Bosch tips:

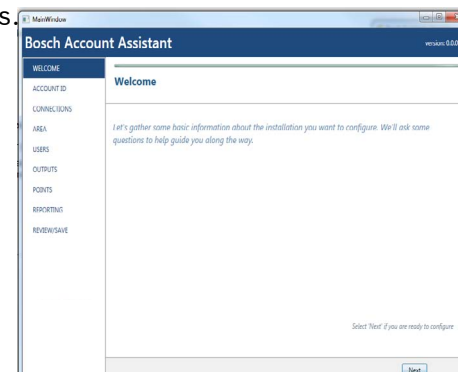
- ▶ Connect wires to control panel before applying battery or AC power.
- ▶ Connect earth ground to a cold water pipe (copper) or other solid connection to ground.



### Step 8 Create panel accounts using RPS B C

#### Bosch tips:

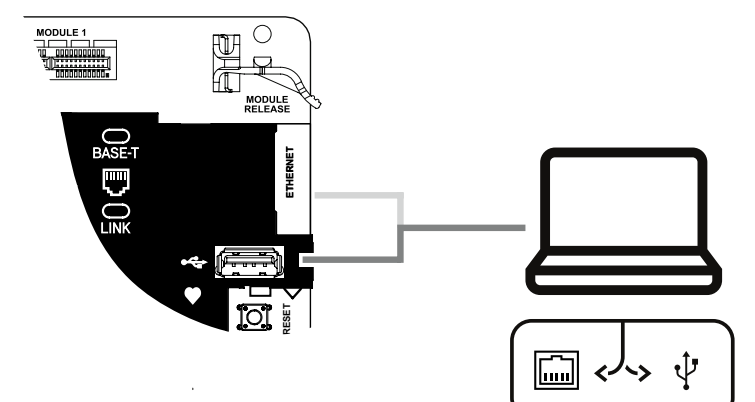
- ▶ If configuring using the Installer Services Portal, go to **Step 11**.
- ▶ Install Remote Programming Software (RPS) v6.06 or later. You can download RPS from the RPS product page.
- ▶ Follow the RPS Account Assistant instructions to create new control panel accounts. The Account Assistant helps you create a new panel account.
- ▶ If RPS is not available, keypad programming is an option. Refer to keypad installation instructions.



### Step 9 Connecting the control panel using RPS B C

#### Bosch tips:

- ▶ Connect a computer with RPS installed. Direct RPS connections can be done through a USB connection or Ethernet connection.
- ▶ The Account Assistant automatically launches when you create a new account.
- ▶ For USB direct connection, use a B99 USB cable.



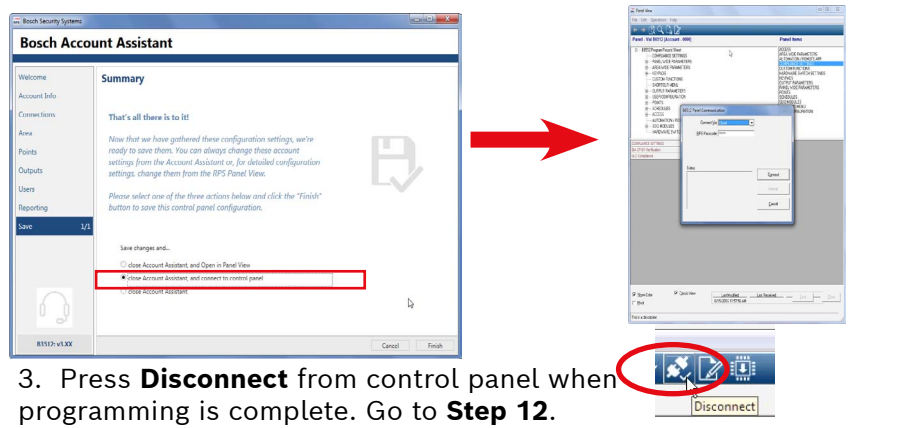
# B Series Control Panel

## Installer Quick Start Guide

### Step 10 Configure and send to control panel using RPS

**Bosch tips:**

- ▶ Program your configuration information using Account Assistant.
- 1. Press **close Account Assistant, and connect to control panel.** This opens the **Panel Communication** window.
- 2. Press **Connect** and send configuration programming to control panel.



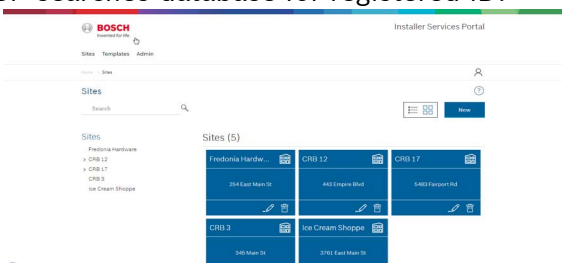
- 3. Press **Disconnect** from control panel when programming is complete. Go to **Step 12.**

### Step 11a Accessing the Installer Service Portal and create panel account

**Bosch tips:**

**Using the Installer Services Portal:** (Not in all regions)

- ▶ Before you can use Installer Services Portal you must register for services at: <https://sp.boschsecurity.com>.
- ▶ Make sure the control panel is connected to the network.
- 1. Log into the Installer Services Portal.
- 2. Click on **New** and select **Device** to create a panel account.
- 3. Add panel account information.
- 4. Activate CloudID. ISP searches database for registered ID.
- 5. Select **Activate**.
- 6. Click **Add Panel**.

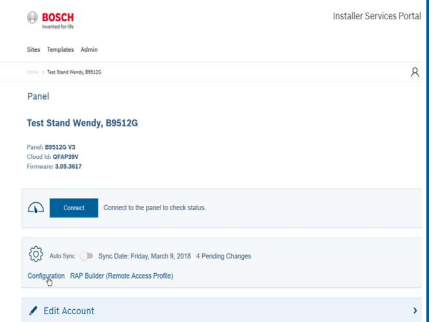


### Step 11b Connect and send using the Installer Service Portal

**Bosch tips:**

**Using the Installer Services Portal:**

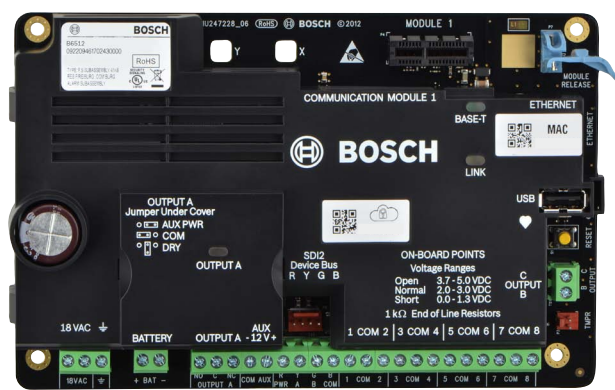
- ▶ Search or select device to connect to a control panel. Type in panel account name in the Search field to locate new account.
- 1. Select the panel account.
- 2. Click **Connect**.
- 3. Click **Configuration**. Program your configuration information.
- 4. Click the 3 vertical dots and select **Push Pending Changes to Panel** to send configuration.
- 5. Click **Disconnect** when configuration is complete.



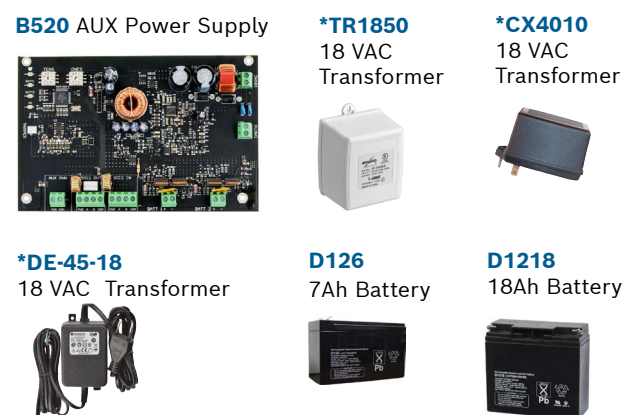
## B Series control panel accessories (partial list)

**Note:** Not all products and features are available in all regions. Consult your Bosch representative or product datasheets for details.

### Control panel



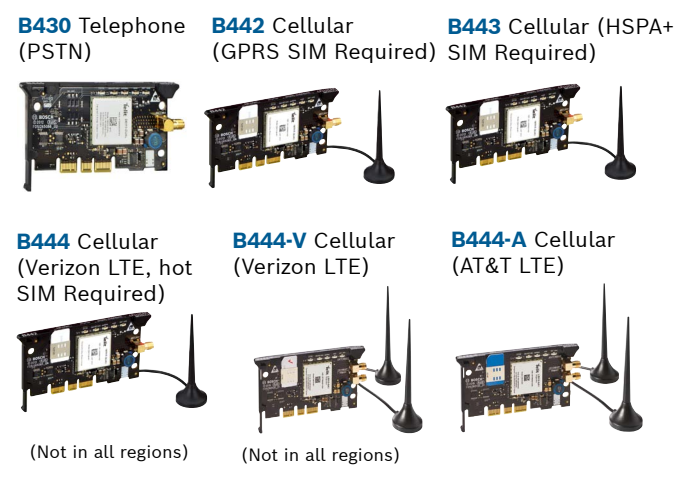
### Power



D135A Low-Battery Disconnect Module

\*Country specific, variants will apply

### Communicators



(Not in all regions)

(Not in all regions)

B450 Remote Cellular Interface



### Keypads



(Not in all regions)

(Not in all regions)

### RFID tags (for Readers & B942 Keypads)

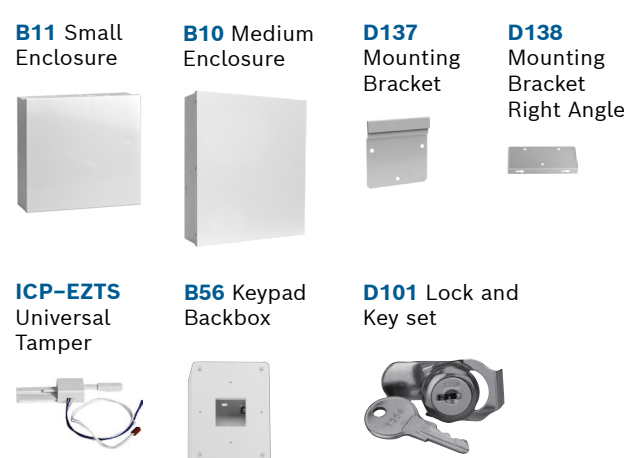


### IP camera integration

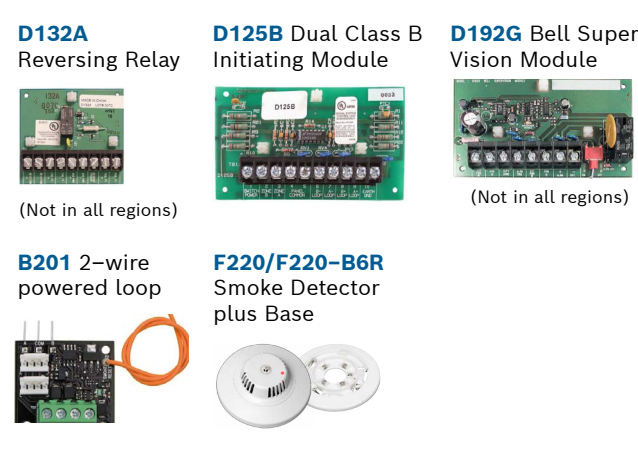
Any Bosch IP camera



### Enclosures & accessories



### Residential fire



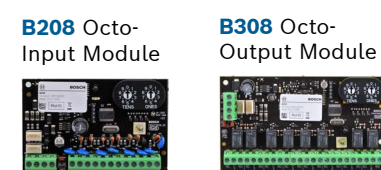
(Not in all regions)

(Not in all regions)

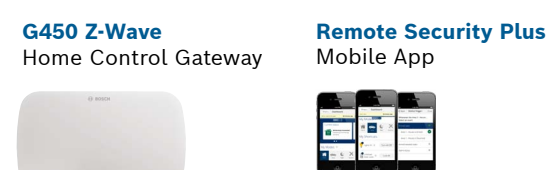
### Access modules



### I/O expansion modules



### \*Home automation



\*Home automation may not be available in all regions. Consult your Bosch representative for details.

### Wired motion detectors



### Step 12 Test the system

After system installation and control panel programming, you must perform a complete system test. A complete system test includes testing the control panel, all devices, and communication destinations for proper operation.

**Bosch tips:**

- ▶ Perform a Walk Test
  1. Select **Actions**.
  2. Select **Test**.
  3. Select **Walk Test**.
  4. Choose a test to run.
- ▶ Send a test report

(B942 is keypad shown)



## FAQs

**What is my default code?**

User Code: **123456**  
Installer Code: **123**

**How do I use Output B and C?**

Outputs B and C are Open Collector Outputs. Wiring can be found in control panel installation manual, section heading **Open Collector Outputs**.

**How do you remotely turn on and turn off the control panel?**

This can be done through the use of the Remote Security Control App.

**How do I connect directly to the control panel with Ethernet?**

By default, the control panel is set up to auto detect and negotiate a connection to RPS when an ethernet cable is connected between them.

**What do I need to be able to send personal notifications?**

SMS (Text) messages require the use of a cellular module and emails can be sent by either an Ethernet or Cellular connection.

**How do I enter "Service Mode"?**

Press and hold the yellow reset button on the control panel for 5 seconds (repeat to exit).

## Where can I go for additional information?

[www.boschsecurity.com](http://www.boschsecurity.com)

Bosch Security Systems B.V.  
Torenallee 49  
5617 BA Eindhoven  
Netherlands

## 2 | Specifications

Dimensions	27.8 cm x 25.9 cm x 8.32 cm (10.9 in x 10.2 in x 3.3 in)
Color	White
Compatible Lockset (optional)	D101 Lock and Key Set
Compatible Dual Tamper Switch (optional)	ICP-EZTS Tamper Switch D110 Tamper Switch
Material	0.7 mm (22 gauge) cold-rolled steel

## Small Control Panel Enclosure B11



en Installation Guide



### Reading Bosch Security Systems B.V. Product Date Codes

For Product Date Code information, refer to the Bosch Security Systems B.V. Web site at: <http://www.boschsecurity.com/datecodes/>.

### Bosch Security Systems B.V.

Torenallee 49  
5617 BA Eindhoven  
Netherlands

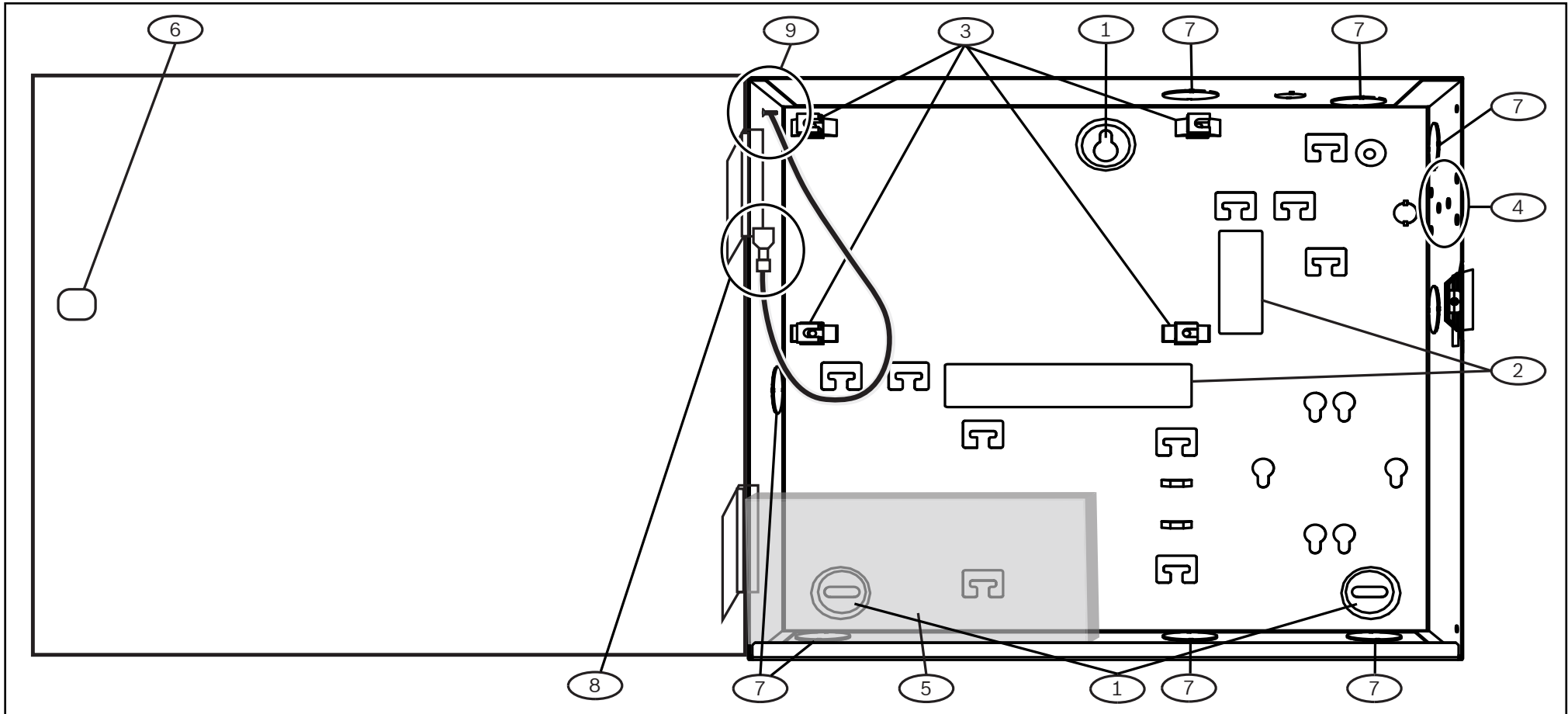
[www.boschsecurity.com](http://www.boschsecurity.com)

© Bosch Security Systems B.V., 2019



# 1 | Overview

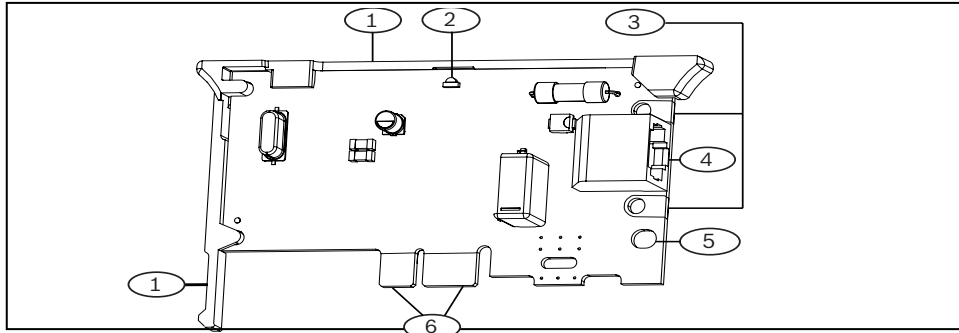
This enclosure is compatible with select Bosch intrusion products, and can hold one batteries.



Callout	Description
1	Enclosure mounting holes (3) Bosch recommends using #8 screws and wall anchors to install.
2	Wire knockouts (9)
3	Control panel mounting location
4	Tamper switch mounting location
5	Battery mounting location (size 7Ah)
6	Lockset mounting location
7	Conduit knockouts (8) 12.7 mm (1/2 in)
8	Grounding (bonding) connection to enclosure door
9	Grounding (bonding) connection for door only. Do not connect any other wires to this lug.

## 1 | Overview

The B430 connects to the control panel for communication over the PSTN (Public Switched Telephone Network).



Callout – Description	Callout – Description
1 – Module handle and support leg	4 – RJ45 phone connector
2 – Line seize/ring LED	5 – Plug-in module retention clip opening
3 – Test phone pads	6 – PCB metal contacts

## 2 | Install or remove the module

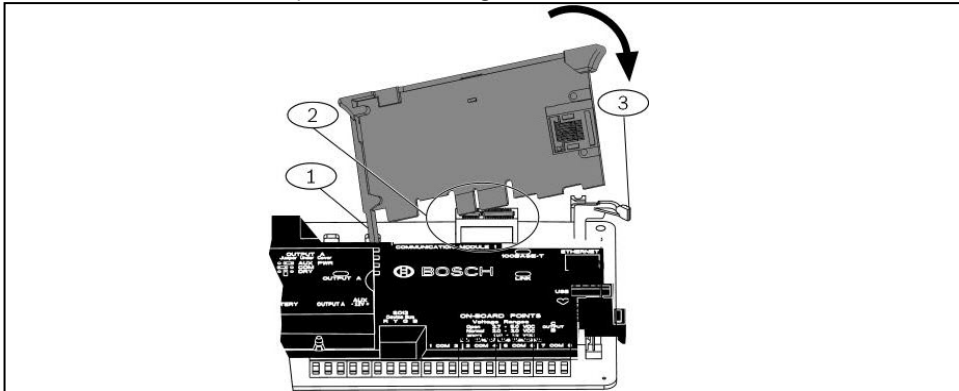


### NOTICE!

Remove all power (AC and battery) before making any connections. Failure to do so might result in personal injury and/or equipment damage.

### 2.1 | Install the module

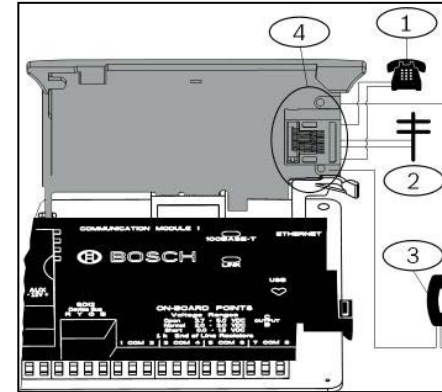
1. Insert the support leg into the support hole labeled X.
2. Align the PCB metal contacts with the on-board connector.
3. Push the module into place until it is tight.



Callout – Description	Callout – Description
1 – Support leg	3 – Plug-in module retention clip
2 – PCB metal contacts	

## 2.2 | Wire the module

1. Connect one end of a telephone cord to the B430.
2. Connect the other end to an RJ31X or RJ38X phone jack. The module has pads on both sides of the board to connect a telephone test set. Refer to the following illustration.



Callout – Description
1 – Premises telephone
2 – Incoming Telco line
3 – Installer telephone test set
4 – RJ45 phone connector

### 2.3 | Remove the module

1. Open the retention clip.
2. Hold the top corners of the support handle.
3. Pull out the module.

## 3 | LED descriptions

Refer to the following table.

Flash pattern	Function
OFF Steady 	Standby
ON Steady 	Line seize
Flash 	Ring detect

## 4 | Configuration

Use Remote Programming Software (RPS) or an SDI2 keypad to program.

For programming parameter descriptions, options, and defaults refer to *RPS Help* or the *Program Entry Guide* for your control panel.

## 5 | Certifications

Region	Certification
US	UL 365 - Police Station Connected Burglar Alarm Units and Systems UL 636 - Holdup Alarm Units and Systems UL 864 - Control Units and Accessories for Fire Alarm Systems (Commercial Fire) UL 985 - Household Fire Warning System Units UL 1023 - Household Burglar Alarm System Units UL 1076 - Proprietary Burglar Alarm Units and Systems UL 1610 - Central Station Burglar Alarm Units FCC Part 15 FCC Part 68 FCC Registration Number: ESVAL00BB430 Ringer Eq: 0.0B
Canada	CAN/ULC S303 - Local Burglar Alarm Units and Systems CAN/ULC S304 - Signal Receiving Centre and Premise CAN/ULC S545 - Residential Fire Warning System Control CAN/ULC S559 - Fire Signal Receiving Centres and Systems ICES-003 - Information Technology Equipment (ITE) ULC-ORD C1023 - Household Burglar Alarm System Units ULC-ORD C1076 - Proprietary Burglar Alarm Units and System

## 6 | Specifications

Dimensions	2 in x 3.68 in x 0.60 in (50 mm x 93.5 mm x 15.25 mm)
Voltage (operating)	12 VDC nominal
Current (maximum)	Standby: 24 mA Alarm: 24 mA
Operating temperature	+32°F to +120°F (0°C to +49°C)
Relative humidity	5% to 93% at +90°F (+32°C )
Communication speed	2400 baud maximum
Compatibility	B9512G/B9512G-E B8512G/B8512G-E B6512 B5512/B5512E B4512/B4512E B3512/B3512E

DE-de: Für Dokumentation in Ihrer Sprache, klicken Sie hier <https://de.boschsecurity.com/de>

El-gr: Μεταβείτε στη διεύθυνση <https://gr.boschsecurity.com/el/> για την τεκμηρίωση σε αυτήν τη γλώσσα.

Es-es: Visite <https://es.boschsecurity.com/es/> para obtener documentación en este idioma.

Fr-fr: Accédez à l'adresse <https://fr.boschsecurity.com/fr/> pour obtenir la documentation dans cette langue.

Hu-hu: A honosított dokumentációt lásd a <https://hu.boschsecurity.com/hu/> oldalon.

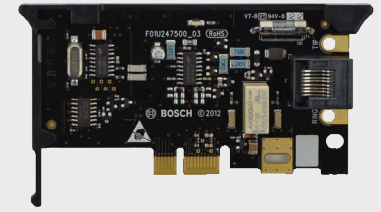
It-it: Andare a <https://it.boschsecurity.com/it/> per la documentazione in questa lingua.

Nl-nl: Voor de documentatie in uw taal, ga naar <https://www.boschsecurity.com/nl/nl>

Pl-pl: Dokumentacja w tym języku znajduje się w witrynie <https://pl.boschsecurity.com/pl/>

Pt-br: Acesse <http://pt.boschsecurity.com/pt/> para obter a documentação neste idioma.

SE-sv: For documentation in this language, go to <https://www.boschsecurity.com/xn/en/>



## Plug-in Telephone Communicator B430



en Installation Guide

**Bosch Security Systems, B.V.**  
 Torenallee 49  
 5617 BA Eindhoven  
 Netherlands  
[www.boschsecurity.com](http://www.boschsecurity.com)

### Copyright

This document is the intellectual property of Bosch Security Systems, Inc. and is protected by copyright. All rights reserved.

### Trademarks

All hardware and software product names used in this document are likely to be registered trademarks and must be treated accordingly.

### Bosch Security Systems, Inc. product manufacturing dates

Use the serial number located on the product label and refer to the Bosch Security Systems, Inc. website at <http://www.boschsecurity.com/datecodes/>.

