

**-GENESIS-**  
**Security Cable**  
Delivering Continuous Connectivity



# Security Cable

Enabling Your Success

**Genesis. Wire that Works – the first time, every time.** Engineered and tested to exceed the highest quality standards, Genesis low-voltage cable is trusted by contractors worldwide to produce consistent system performance for a wide range of residential and commercial applications.

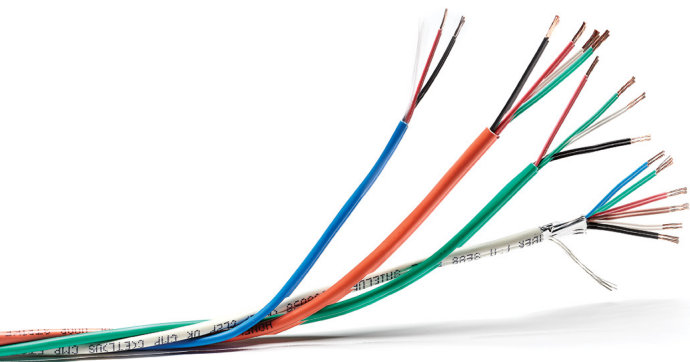
Our cable delivers a hassle-free experience – from sale to installation – that drives repeat business and gets pros in and out of jobs faster. Genesis Cable optimizes security system longevity, ensures high performance and drives a greater return on investment. **Count on it.**





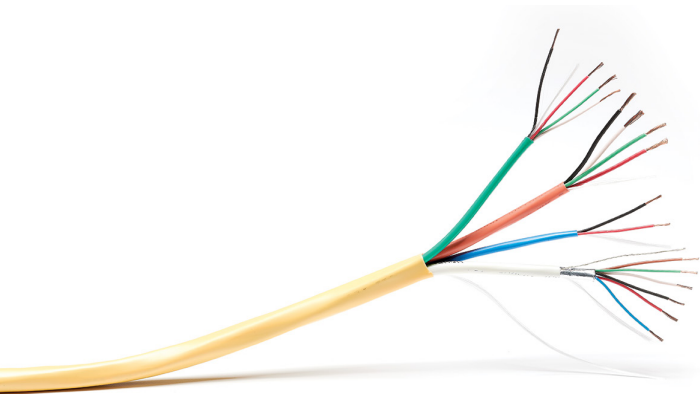
# Hassle-Free Solutions for Every Application

Burglar alarm systems.  
Access control. Closed circuit  
television (CCTV).



## **Profusion®**

Unconstrained by binders, adhesives or thick overall jackets, Profusion decreases material costs by up to 16% and reduces entry point wiring time by up to 30%. This single, jacketless cable is twisted together like a rope, bundling individual lock power, door contact, card reader and request-to-exit wiring.

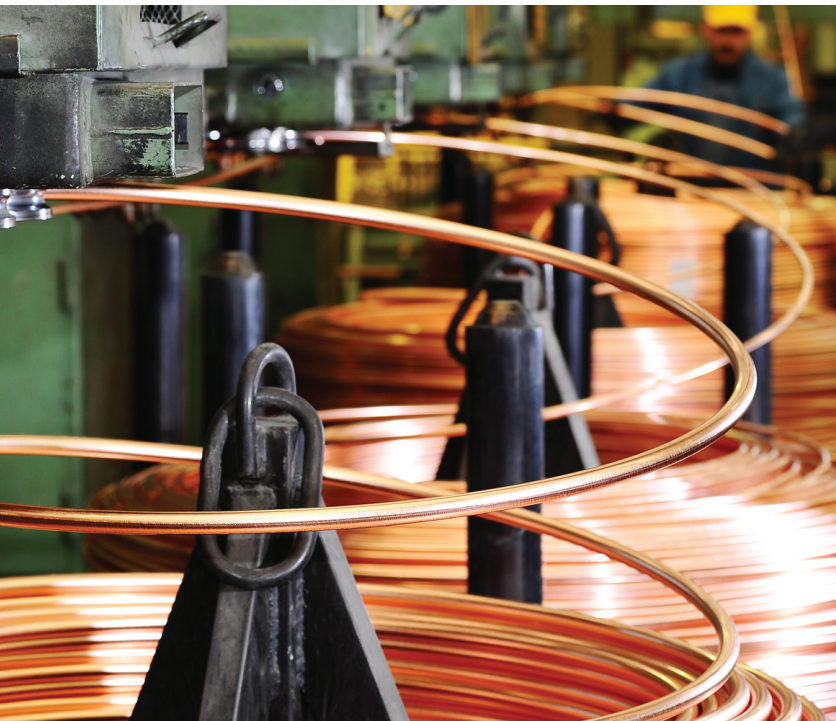


## **Access Control Composite Cable**

Designed to bend freely around corners and obstructions without getting snagged, this convenient, jacketed bundle combines individual lock power, door contact, card reader and request-to-exit cables for smoother pulls and more efficient installations.

## Your Single Source Provider

**Genesis offers the most complete selection of low-voltage cable** with access to products across Security, Comfort (HVAC), Fire & Life Safety, Networking & Communication and Entertainment (A/V). With product availability at **thousands of locations throughout the United States, Canada and Latin America**, you can depend on Genesis Cable for every job across residential and commercial applications. **With industry-leading programs, warranties and a dedicated Customer Service Team, Genesis has your back. Count on it.**



### **Toll-Free Customer Support**

We deliver confidence by ensuring prompt response and resolution when and where you need it. When you work with Genesis, you work with the best.

### **3-for-1 Warranty**

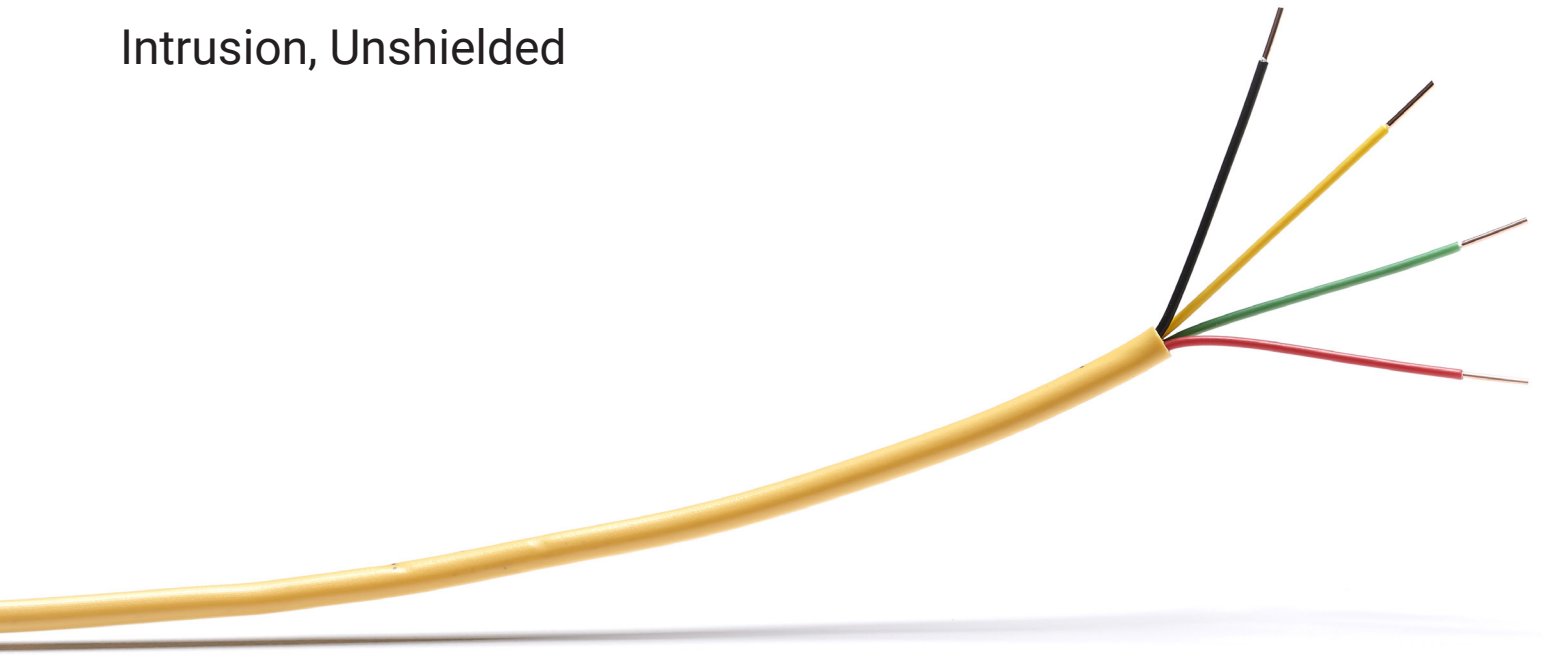
At Genesis, we insure protection for you and your customers. If any cable fails to perform to spec, we'll replace it – three units to one.



### **In Stock, Readily Available**

Genesis keeps your business running on schedule, with product availability at thousands of locations across the United States, Canada and Latin America.

# Intrusion, Unshielded



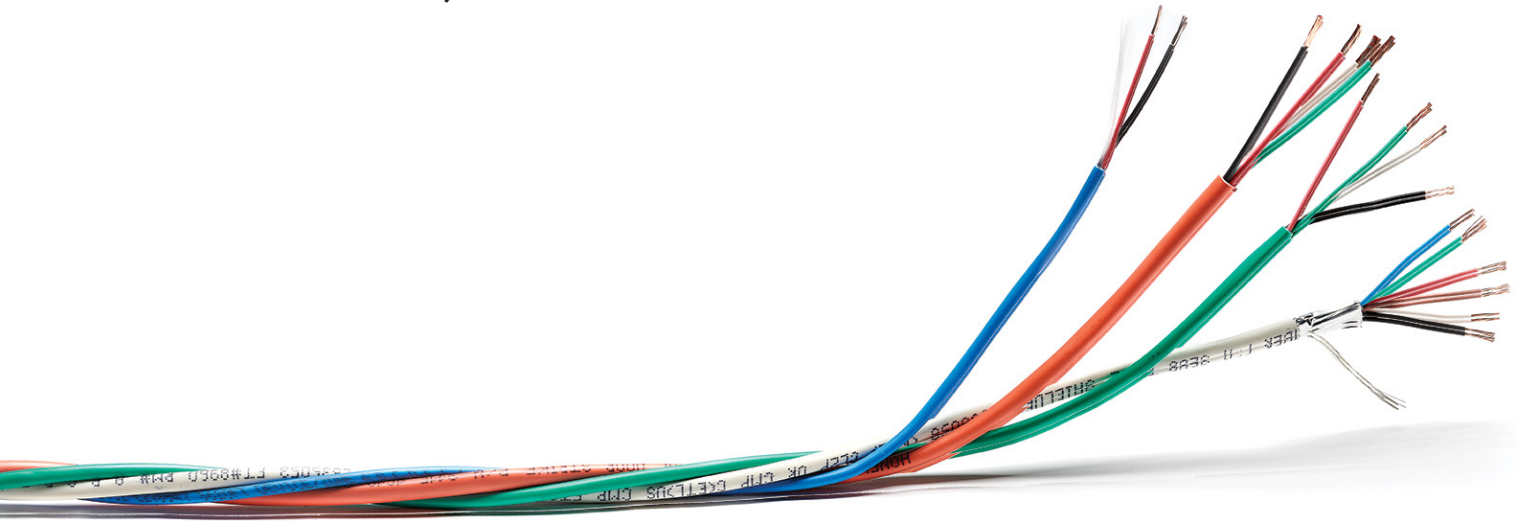
AWG	Number of Conductors	Stranding	Shield	DC Resistance (Ohms/1000')	Nominal Capacitance (pF/ft.)	Nominal Outer Diameter (inches)	Average Weight (Pounds/1000')	Part Number
<b>Plenum Rated (CMP/CL3P/FT6 Listed)</b>								
22	2	7 Strand	Unshielded	16.90	26.0	0.116	8.7	3102
22	4	Solid	Unshielded	18.00	17.6	0.120	12.8	3103
22	4	7 Strand	Unshielded	16.90	26.0	0.133	14.4	3104
18	2	19 Strand	Unshielded	6.66	32.2	0.148	16.0	3114
18	4	19 Strand	Unshielded	6.66	32.2	0.172	28.3	3115
<b>Riser Rated (CMR/CL3R/FT4 Listed)</b>								
22	2	Solid	Unshielded	18.00	18.8	0.106	8.0	2101
22	2	7 Strand	Unshielded	16.90	18.5	0.116	9.2	2102
22	4	Solid	Unshielded	18.00	18.8	0.120	12.3	2103
22	4	7 Strand	Unshielded	16.90	18.5	0.135	13.4	2104
18	2	19 Strand	Unshielded	6.66	22.7	0.150	16.0	2114
18	4	19 Strand	Unshielded	6.66	22.7	0.174	28.1	2115

# Intrusion, Shielded



AWG	Number of Conductors	Stranding	Shield	DC Resistance (Ohms/1000')	Nominal Capacitance (pF/ft.)	Nominal Outer Diameter (inches)	Average Weight (Pounds/1000')	Part Number
<b>Plenum Rated (CMP/CL3P/FT6 Listed)</b>								
22	2	7 strand	Shielded	16.90	44.0	0.120	11.0	3202
22	4	7 strand	Shielded	16.90	39.2	0.137	17.0	3204
18	2	19 strand	Shielded	6.66	59.3	0.156	19.3	3214
18	4	19 strand	Shielded	6.66	50.8	0.182	32.2	3215
<b>Riser Rated (CMR/CL3R/FT4 Listed)</b>								
22	2	7 strand	Shielded	16.90	32.0	0.120	9.6	2202
22	4	7 strand	Shielded	16.90	28.2	0.141	15.6	2204
18	2	19 strand	Shielded	6.66	42.9	0.154	18.7	2214
18	4	19 strand	Shielded	6.66	36.3	0.180	31.4	2215

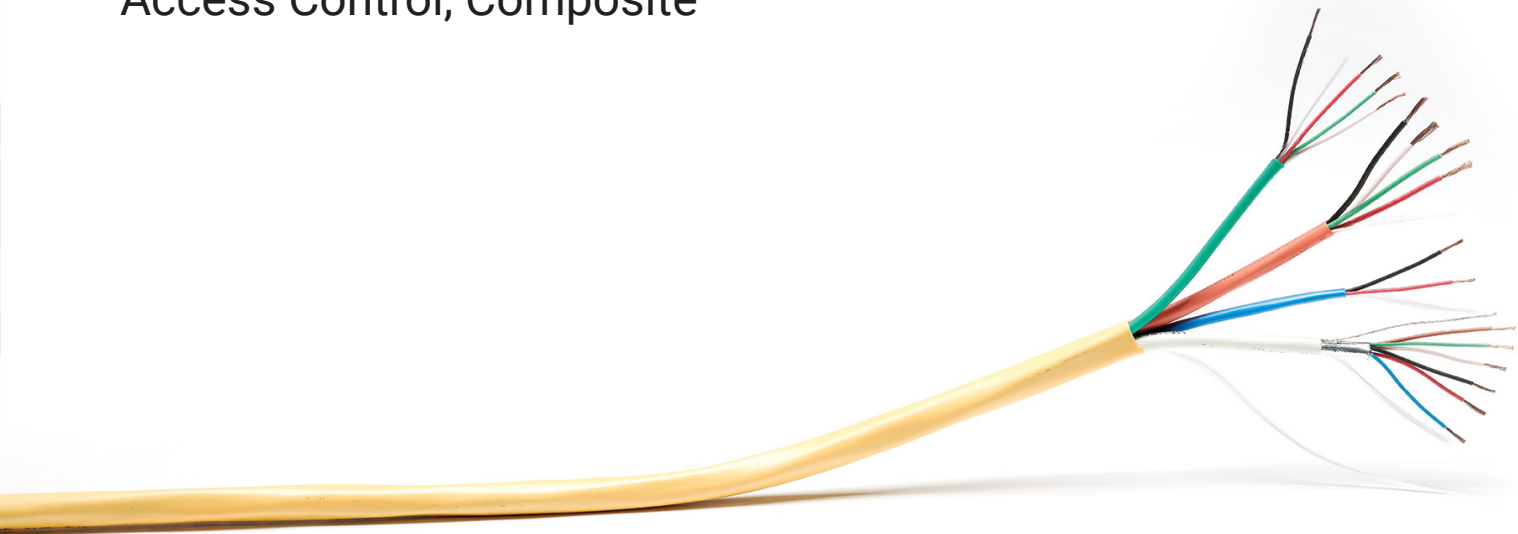
# Access Control, PROFUSION®



AWG	Number of Conductors	Stranding	Shield	DC Resistance (Ohms/1000')	Nominal Capacitance (pF/ft.)	Nominal Outer Diameter (inches)	Average Weight (Pounds/1000')	Part Number
<b>Plenum Rated (CMP/CL3P/FT6 Listed)</b>								
18	4	19 strand	N/A	6.52	22.8			
22	6	7 strand	Shielded	16.90	24.3	0.395	77.2	3195
22	2	7 strand	N/A	16.90	24.3			
22	4	7 strand	N/A	16.90	24.3			
18	4	19 strand	Shielded	6.52	22.8			
22	6	7 strand	Shielded	16.90	24.3	0.395	88.5	3295
22	2	7 strand	Shielded	16.90	24.3			
22	4	7 strand	Shielded	16.90	24.3			
<b>Riser Rated (CMR/CL3R/FT4 Listed)</b>								
18	4	19 strand	N/A	6.52	22.8			
22	6	7 strand	Shielded	16.90	24.3	0.410	69.5	2195
22	2	7 strand	N/A	16.90	24.3			
22	4	7 strand	N/A	16.90	24.3			
18	4	19 strand	Shielded	6.52	22.8			
22	6	7 strand	Shielded	16.90	24.3	0.410	80.3	2295
22	2	7 strand	Shielded	16.90	24.3			
22	4	7 strand	Shielded	16.90	24.3			



# Access Control, Composite



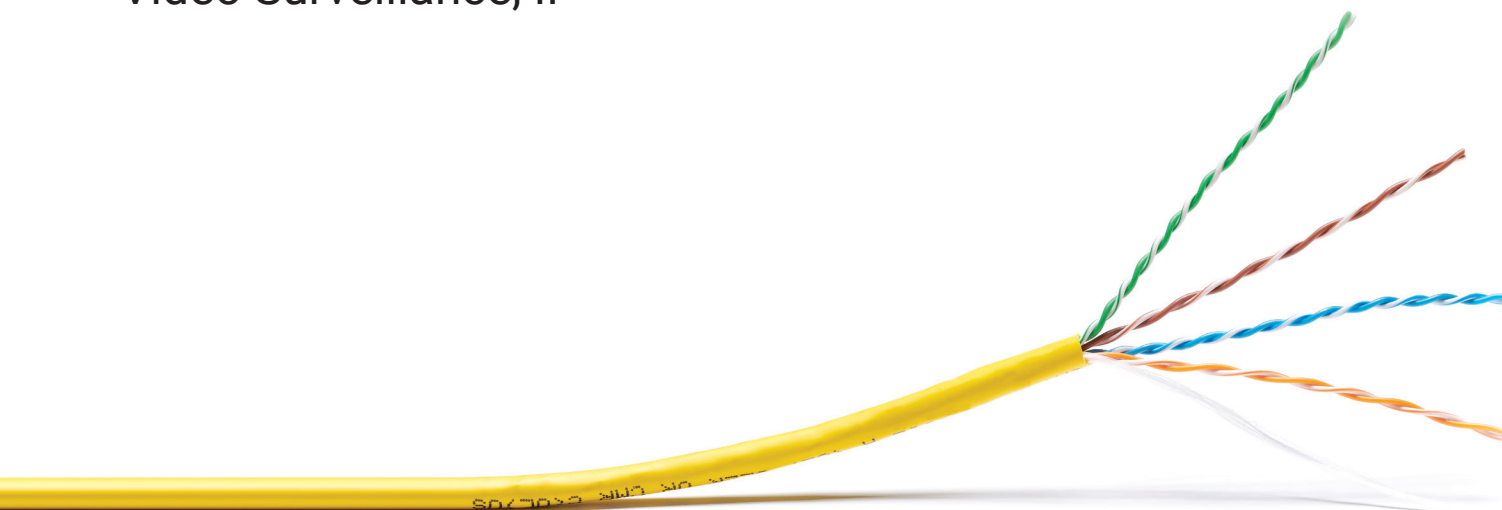
AWG	Number of Conductors	Stranding	Shield	DC Resistance (Ohms/1000')	Nominal Capacitance (pF/ft.)	Nominal Outer Diameter (inches)	Average Weight (Pounds/1000')	Part Number
<b>Plenum Rated (CMP/CL3P/FT6 Listed)</b>								
18	4	19 strand	N/A	6.52	22.8	0.350	89.0	3196
22	6	7 strand	Shielded	16.90	24.3			
22	2	7 strand	N/A	16.90	24.3			
22	4	7 strand	N/A	16.90	24.3			
18	4	19 strand	Shielded	6.52	22.8	0.400	100.8	3296
22	6	7 strand	Shielded	16.90	24.3			
22	2	7 strand	Shielded	16.90	24.3			
22	4	7 strand	Shielded	16.90	24.3			
<b>Riser Rated (CMR/CL3R/FT4 Listed)</b>								
18	4	19 strand	N/A	6.52	22.8	0.350	83.1	2196
22	6	7 strand	Shielded	16.90	24.3			
22	2	7 strand	N/A	16.90	24.3			
22	4	7 strand	N/A	16.90	24.3			

# Video Surveillance, Analog



Style	Coaxial Shield	Recommended Video Transmission Limit (Feet)	Rating	Nominal Outer Diameter (Inches)	Average Weight (Pounds/1000')	Part Number
20 AWG Bare Copper RG59	95% Bare Copper	750	General Purpose (CL2)	0.242	36.0	5001
20 AWG Bare Copper RG59 + 18/2 Siamese	95% Bare Copper	750	General Purpose (CM/CL2)	0.420 x 0.245	60.0	5013
20 AWG Bare Copper RG59 + 18/2 Siamese	95% Copper Clad Aluminum	600	General Purpose (CM/CL3)	0.425 x 0.240	42.8	6508

# Video Surveillance, IP



Number of Pairs	Center Spline	Bandwidth @ 100 Meters	Bandwidth @ 30 Meters	Recommended PoE Limit	Rating	Nominal Outer Diameter (inches)	Average Weight (Pounds/ 1000')	Part Number
<b>Cat 6A Unshielded (U/UTP)</b>								
4	Yes	10 Gbps	40 Gbps	60W and above	Plenum (CMP/FT6)	0.320	45.0	5393
4	Yes	10 Gbps	40 Gbps	60W and above	Riser (CMR/FT4)	0.350	44.0	5193
<b>Cat 6+ Shielded (F/UTP)</b>								
4	Yes	1 Gbps	10 Gbps	Up to 60W	Plenum (CMP/FT6)	0.275	45.0	5392
4	Yes	1 Gbps	10 Gbps	Up to 60W	Riser (CMR/FT4)	0.275	35.0	5192
<b>Cat 6+ Unshielded (U/UTP)</b>								
4	Yes	1 Gbps	10 Gbps	Up to 60W	Plenum (CMP/FT6)	0.240	28.0	5102
4	Yes	1 Gbps	10 Gbps	Up to 60W	Riser (CMR/FT4)	0.240	25.0	5092
<b>Cat 6 Unshielded (U/UTP)</b>								
4	No	1 Gbps	10 Gbps	Up to 25.5W	Plenum (CMP/FT6)	0.205	25.0	6361
4	No	1 Gbps	10 Gbps	Up to 25.5W	Riser (CMR/FT4)	0.205	24.0	6360
4	No	1 Gbps	10 Gbps	Up to 25.5W	Direct Burial	0.236	27.0	5110
<b>Cat 5e Shielded (F/UTP)</b>								
4	No	1 Gbps	1 Gbps	Up to 12.95W	Plenum (CMP/FT6)	0.230	33.0	5388
4	No	1 Gbps	1 Gbps	Up to 12.95W	Riser (CMR/FT4)	0.250	28.0	5178
<b>Cat 5e Unshielded (U/UTP)</b>								
4	No	1 Gbps	1 Gbps	Up to 12.95W	Plenum (CMP/FT6)	0.200	21.0	5088
4	No	1 Gbps	1 Gbps	Up to 12.95W	Riser (CMR/FT4)	0.200	21.0	5078
4	No	1 Gbps	1 Gbps	Up to 12.95W	Direct Burial	0.281	23.0	5090
4	No	1 Gbps	1 Gbps	Up to 12.95W	Water Resistant	0.225	24.0	5097

**Genesis Cable**

7701 95th Street  
Pleasant Prairie, WI 53158  
Office: 800.222.0060  
[www.genescable.com](http://www.genescable.com)

© 2023 Genesis Cable

**-GENESIS-**