



## APC Smart-UPS

### The First Cloud-enabled UPS For Distributed IT

Schneider Electric award-winning APC™ Smart-UPS™ is the most popular UPS in the world for servers, storage and network power protection. Smart-UPS provides availability and manageability to your network allowing you to focus on business growth instead of business downtime.

All Smart-UPS are EcoStruxure™ Ready and offer multiple monitoring options scalable to your needs.

EcoStruxure™ IT SmartConnect is designed for essential monitoring, allowing you to view the status of your UPS health and receive notifications – all enabled out-of-box through the dedicated SmartConnect Ethernet Port. Feature availability varies with terms of use.

Register your device on the SmartConnect web portal now, to discover the benefits of remote UPS monitoring with additional features available via upgrade plans. More information and terms of use at

<https://smartconnect.apc.com/welcome>

Life Is On



# The World's Most Popular UPS Just Got Smarter

## EcoStruxure IT SmartConnect:



Features vary with terms of use.

## SmartConnect remote UPS monitoring

- Wizard for user account creation and Smart-UPS device registration
- No special software, SNMP traps or coding required to set up reporting
- Receive proactive actionable alerts and lifecycle recommendations
- Mobile responsive interface adjusts to any screen size including mobile and tablet
- Ideal for distributed IT and remote sites - run Self Test and UPS firmware upgrade from cloud
- Remote power-cycling of outlet groups on Advanced Plan

## Smart-UPS Features:

### Connectivity Options

Connect to SmartConnect or to EcoStruxure IT via the SmartConnect Ethernet Port for remote UPS monitoring.

### Sinewave

Sinewave is designed to emulate utility power, it will support your device upon battery backup

### Intelligent Battery Management

Temperature compensated charging extends life and advanced algorithms recommend replacement date

### High-efficiency Green mode

Optimum efficiency, which saves on utility and cooling costs

### Network-grade Power

Provides stable power conditions by filtering noise, automatic voltage regulation (AVR), and surge protection

### Emergency Power Off (EPO)

Provides for remote UPS shut-off in the event of a fire or other emergency (2,200 VA and above)

## Getting Started with SmartConnect is Easy



### 1 Install your UPS

Install your SmartConnect-compatible UPS at your business site. Connect it to your network using a dedicated ethernet port.

### 2 Scan the QR code

Scan the QR Code printed on your Smart-UPS, and automatically register your device with the SmartConnect Web Portal.

### 3 Register your UPS

Create a Schneider Electric account to register your Smart-UPS. Your UPS will be automatically linked to your account.

Life Is On

**Schneider**  
Electric

# APC Smart-UPS SMC Features

Application optimized models ideal for entry level servers, point-of-sale (POS) and other small network devices



## SmartConnect Ethernet Port

Proactive remote UPS cloud monitoring feature out-of-box, accessible from any internet connected device

## Sinewave Output

Simulates the utility when on battery for optimum device compatibility

## Advanced Battery Management

Temperature compensated charging extending the life of internal batteries

## High Efficiency Green Mode

Save on utility costs while reducing heat to promote longer component life

## Network Grade Power Conditioning

Automated voltage regulation (AVR), noise filtering and surge protection

## LCD Display

Intuitive interface provides comprehensive status information at-a-glance

## Communication Ports

USB and serial ports for UPS management

## Safety-agency Approved

Ensures the product has been tested and approved to national standards

## Generous Number of Outlets

All receptacles are surge and UPS protected

## Battery Disconnect

Convenient way to disconnect battery for transport (Tower models)



## APC Smart-UPS SMC

The most affordable Sinewave UPSs in the Smart-UPS family. Designed for entry-level servers, it is compatible with today's active power factor corrected (PFC) power supplies.

Life Is On

Schneider  
Electric



# CONNECTED

## APC Smart-UPS SMC Display Comprehensive LCD interface for status at a glance



### LCD display

Comprehensive status at a glance

Status conditions:

- On line
- On battery
- Green mode
- Load graph
- Battery charge graph
- Audible alarm

Measure:

- Input & output voltage
- Load viewable in watts, VA and percentage
- Output current and frequency
- Event counter
- Estimated on battery runtime

- 1 On line / On battery
- 2 On / Off button
- 3 System fault LED
- 4 Mute button
- 5 Display button

Life Is On



# APC Smart-UPS SMT Features

Intelligent and efficient network power protection from entry level to scalable runtime. Ideal for servers, point-of-sale, routers, switches, hubs, and other network devices.

In addition to Smart-UPS SMC features:



## SmartSlot™ Interface

Accepts a wide array of accessory cards for advanced management and environmental monitoring

## Switched Outlet Group

Controlled separately from the UPS for discrete reboot of hung devices, sequenced ON/OFF, and non-critical load shedding

## Configurable, Multi-lingual LCD Display

Provides UPS status and key measures at a glance. Clear and accurate, menu-driven display for easy set-up and customization with or without software installation

## Extended-range Automatic Voltage Regulation

Provides enhanced brownout protection, boosting incoming voltage up to 30% without using battery power

## Rack-mount Rails

Rail kit provided to securely install the 2.2kVA and 3kVA models in your IT rack

## Emergency Power Off (EPO)

Provides for remote UPS shut-off in the event of a fire or other emergency (2.2kVA and above)



## APC Smart-UPS

Advanced line-interactive power protection for servers and network equipment

Life Is On

Schneider  
Electric



# APC Smart-UPS SMT Display

## Intuitive, easy-to-use LCD interface



### LCD Display Screen

Clear, consistent, and detailed information in your choice of basic or advanced menus

### Power Status

Operating mode, efficiency, load, input / output frequency, battery capacity, runtime and more

### Configuration

Easily configure: language, power quality, alarms, delay and threshold settings

### Test and Diagnostics

Initiate battery and runtime calibration tests

### Control

UPS and outlet group settings

### Logs

See explanation of last 10 transfers and faults

### Quick Status Indicators

Online, on battery, fault, and replace battery LEDs for quick status identification

### Escape, Return and Navigation Buttons

Intuitive navigation to confirm, exit or adjust settings

### Load Energy Meter

Track energy usage in kilowatt-hours

Life Is On



# APC Smart-UPS Management Solutions

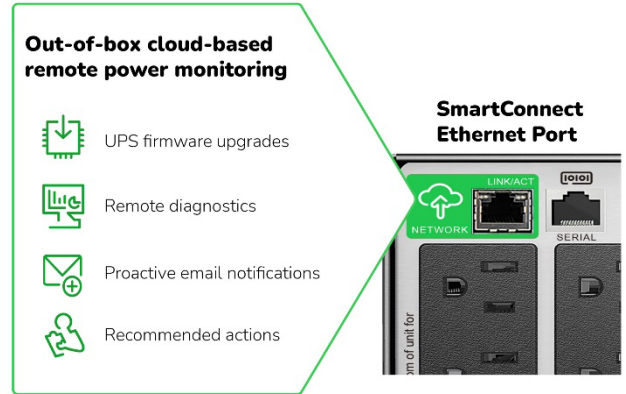
## SmartConnect Ethernet Port

Out-of-box remote UPS power monitoring

Automatically included in connected Smart-UPS units, SmartConnect is an ingenious connectivity feature that makes Smart-UPS even more adaptable and easier to deploy: SmartConnect allows you to view the status of your UPS through a secure web portal. Through this innovative remote monitoring interface, you will receive automatic notifications, UPS firmware upgrades with one-click installation, and be able to run remote Self Tests. Feature availability varies with terms of use.

Advanced Plan on SmartConnect, with remote Outlet Group reboot, facilitates power cycling of connected IT equipment without going on-site.

<https://smartconnect.apc.com/welcome>



### SmartConnect Features:

- No additional accessory card, software, or gateway required
- Actionable alerts and lifecycle recommendations
- The SmartConnect web portal is accessible from any internet connected device
- Remote power-cycling of IT equipment on Advanced Plan

## PowerChute™ Serial Shutdown

UPS manageability at your fingertips

UPS management, graceful shutdown, and energy management software for servers using dedicated serial or USB connections.

Energy usage, cost and CO2 reporting provide a greater understanding of the energy consumed by IT equipment, enabling improved energy efficiency. Learn more and download from <https://www.apc.com/pcss>.



### PowerChute Serial Shutdown Features:

- UPS monitoring & management
- Configurable energy cost
- Unattended, graceful shutdown during power events
- Multiple languages (English, French, German, Italian, Simplified Chinese, Spanish (International), Brazilian Portuguese) support
- Secure web User Interface (UI) access
- Energy & CO2 emissions reporting
- Multiple operating system support

Life Is On

Schneider Electric



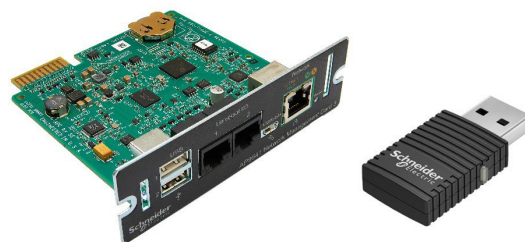
# APC Smart-UPS Management Solutions

## UPS Network Management Cards

For remote management and control

Connect to your network and enjoy direct control

APC UPS network management cards allow for secure connection and control of an individual APC UPS unit via web browser, command-line interface, or SNMP. The configurable notification features keep you informed of problems as they occur. For protected servers, the included PowerChute Network Shutdown software provides graceful, unattended shutdown in the event of an extended power outage, always keeping business information safe.



AP9641

AP9834

### Network management card features:

- Browser accessible: View the user interface with a browser for quick access from anywhere, on a secure network
- Remote device management: Enable management of your UPS by connecting it directly to the network
- Fault notification: Get real-time event notifications, minimizing response time to critical physical infrastructure situations – reducing mean time to repair, improving efficiency, and maximizing uptime
- Reboot equipment remotely: Eliminate the need to dispatch technicians to remote locations

## PowerChute™ Network Shutdown

Industry-leading power protection for your hyper-converged and virtual infrastructure

In conjunction with the APC UPS Network Management Card, PowerChute Network Shutdown protects your physical and virtual IT environment from threats to IT availability.

Network-based, graceful, unattended shutdown and restart of your physical servers and virtual machines protects data integrity and reduces system downtime during prolonged power disturbances. Learn more and download from <https://www.apc.com/pcns>.



### PowerChute Network Shutdown Features:

- Unattended, graceful network-based shutdown during power events
- Sequenced Server Shutdown
- Integration with all major Virtualization hypervisors including VMware ESXi, Microsoft Hyper-V
- Integration with industry leaders in HCI (Dell VxRail, Nutanx®, VMware vSAN™, Cisco HyperFlex®, HPE SimpliVity)
- Support for virtual clusters
- Virtual Machine prioritization & migration/shutdown
- Redundant and Parallel UPS support
- Secure communication via HTTPS
- Scalable architecture to support virtually unlimited number of systems

Life Is On

Schneider  
Electric



# APC Smart-UPS Services and Accessories

Schneider Electric Critical Power & Cooling Services (CPCS) provides the highest quality services and solutions by trained and trusted professionals. Our world-class services offer a smart way to build, operate, and maintain your critical applications, ensuring the right people, in the right place, at the right time.

## UPS management accessories

- AP9640: UPS Network Management Card
- AP9641: UPS Network Management Card with environmental monitoring
- AP9834: APC USB Wi-Fi Device for wireless communication [compatible with AP9641 & AP9643 pre-installed or embedded]



AP9641

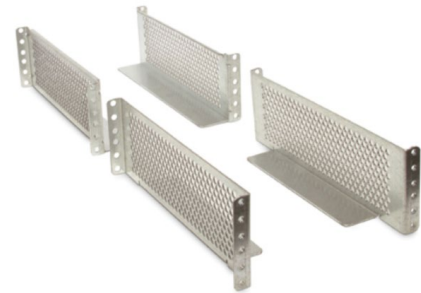


AP9834

---

## Additional accessories

- AP9625: APC Smart-UPS two-post rail kit
- SU032A: APC Smart-UPS 4-post rack-mount rails



AP9625

---

## Service bypass panels

- SBP1500RM: APC service bypass PDU, 120V; 15 amp with (8) NEMA 5-15R
- SBP300RM: APC service bypass PDU, 120V; 30 amp with (4) NEMA 5-20R



SBP300RM

# APC Smart-UPS SMC

## Tower Technical Specifications



### SMC1000C

### SMC1500C

#### Output

Power Capacity	600W / 1000VA	900W / 1500VA
Nominal Output Voltage	120V	
Output Frequency	47-63 Hz	
Wave Form Type	Pure Sinewave	
Output Connections	(8) NEMA 5-15R	

#### Input

Nominal Input Voltage	120V	
Input Voltage Range for main operations (Max adjustable range)	92-132V (85-136V)	
Input Frequency	50/60 Hz +/-3 Hz (auto sensing)	
Input Connection	NEMA 5-15P, 6ft cord	

#### Batteries and Runtime

Battery Type	Maintenance-free sealed lead-acid battery with suspended electrolyte	
Runtime at Half Load	14 min	11 min
Runtime at Full Load	5.Min	4 min
Replacement Battery	APCRBC142	RBC6

#### Communication and Management

APC SmartConnect Enabled	Yes, Features vary with Terms of Use	
Interface Ports	USB and Serial (RJ45)	
Control Panel and Audible Alarms	Etched glass LCD display with LED status indicators; alarm on battery, distinctive low battery alarm	

#### Surge Protection Filtering

Surge Energy Rating (Joules)	693 J	
Filtering	Full time multi-pole noise filtering: 0.3% IEEE surge let-through, zero clamping response time, meets UL1449	

#### Physical

Dimensions (H x W x D)	8.5 x 6.72 x 17.3 in	8.45 x 6.7 x 17.3 in
Net Weight	38 lbs.	45 lbs.

#### Conformance

Regulatory	UL 1778, CSA FCC Part 15 Class A, BSMI, NOM	
Warranty	2 years repair or replace for unit and battery	
Equipment Protection Policy	\$150,00 lifetime	

Life Is On

Schneider  
Electric

# APC Smart-UPS SMC

## Rackmount Technical Specifications



### SMC1000-2UC

### SMC1500-2UC

#### Output

Power Capacity	600W / 1000VA	900W / 1500VA
Nominal Output Voltage	120V	
Output Frequency	47-63 Hz	
Wave Form Type	Pure Sinewave	
Output Connections	(6) NEMA 5-15R	

#### Input

Nominal Input Voltage	120V	
Input Voltage Range for main operations (Max adjustable range)	106 – 130 V (97-136V)	
Input Frequency	50 / 60 Hz +/- 3 Hz (auto-sensing)	
Input Connection	NEMA 5-15P, 8ft cord	

#### Batteries and Runtime

Battery Type	Maintenance-free sealed lead-acid battery with suspended electrolyte	
Runtime at Half Load	14 min	18 min
Runtime at Full Load	5 min	6 min
Replacement Battery	APCRBC124	APCRBC157

#### Communication and Management

APC SmartConnect Enabled	Yes, Features vary with Terms of Use	
Interface Ports	USB and Serial (RJ45)	
Control Panel and Audible Alarms	Etched glass LCD display with LED status indicators; alarm on battery, distinctive low battery alarm	

#### Surge Protection Filtering

Surge Energy Rating (Joules)	455 J	
Filtering	Full time multi-pole noise filtering: 0.3% IEEE surge let-through, zero clamping response time, meets UL1449	

#### Physical

Dimensions (H x W x D)	3.5 x 18.9 x 16.0 in	3.5 x 18.9 x 18.0 in
Net Weight	38 lbs.	59 lbs.

#### Conformance

Regulatory	UL 1778, CSA FCC Part 15 Class A, BSMI, NOM	
Warranty	2 years repair or replace for unit and battery	
Equipment Protection Policy	\$150,00 lifetime	

Life Is On

Schneider  
Electric



# APC Smart-UPS SMT

## Tower Technical Specifications



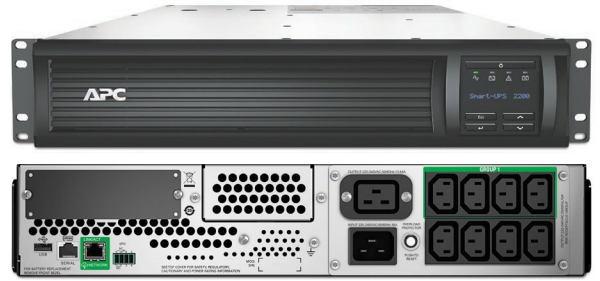
	SMT750C	SMT1000C	SMT1500C SMT1500CNC	SMT2200C	SMT3000C
<b>Output</b>					
Power Capacity	500 W/750 VA	700W / 1000VA	1000W / 1500VA	1980 W/2200 VA	2700 W/3000 VA
Nominal output voltage	120				
Output frequency	47 - 53 Hz for 50 Hz nominal; 57 – 63 Hz for 60 Hz nominal				
Waveform type	Pure Sinewave				
Output connections (NEMA)	(6) 5-15R	(8) 5-15R		(8) 5-15R, (2) 5-20R	
Switched outlet groups	-	1			
<b>Input</b>					
Nominal input voltage	120V				
Input voltage range for main operations (Max adjustable)	82 – 144 (75 – 154V)				
Input frequency	50/60 Hz +/-3 Hz (auto sensing)				
Input connection	5-15P			5-20P	L5-30P
<b>Batteries and runtime</b>					
Battery type	Maintenance-free sealed lead-acid battery with suspended electrolyte; leak proof				
Replacement battery	RBC48	RBC6	RBC7	RBC55	
<b>Runtime estimates</b>					
200W	:22	:45	1:24	2:17	2:29
500W	:05	:10	:23	:51	:55
700W	-	:06	:12	:34	:37
1000W	-	-	:07	:21	:23
1400W	-	-	-	:13	:14
1600W	-	-	-	:10	:12
Full load	:05	:06	:07	:07	:06
<b>Communications and management</b>					
APC SmartConnect Enabled	Yes, Features vary with Terms of Use				
Interface ports	Serial (RJ45), USB, and SmartSlot for NMC				
Control panel and audible alarms	Alpha-numeric LCD display with LED status indicators; alarm on battery, distinctive low battery alarm and configurable delays "NC" versions have AP9641 network management card pre-installed in the SmartSlot				
Emergency power off (EPO)	Optional			Yes	
<b>Physical</b>					
Maximum height (inches)	6.2	8.5	8.5	17.0	17.0
Maximum width (inches)	5.4	6.7	6.7	7.7	7.7
Maximum depth (inches)	14.1	17.3	17.3	21.5	21.5
Net weight (pounds)	29	42	53	11.2	116
<b>Conformance</b>					
Regulatory	UL 1778, CSA				
Warranty and equipment protection	3-year electronics, 2-year battery, and \$150,000 lifetime EPP				

Life Is On

Schneider  
Electric

# APC Smart-UPS SMT

## Rackmount Technical Specifications



	SMT750RM2UC SMT750RM2UCNC	SMT1000RM2UC	SMT1500RM2UC SMT1500RM2UCNC	SMT2200RM2UC SMT2200RM2UCNC	SMT3000RM2UC SMT3000RM2UCNC
<b>Output</b>					
Power Capacity	500 W/750 VA	700W / 1000VA	1000W / 1500VA	1980 W/2200 VA	2700 W/3000 VA
Nominal output voltage	120V				
Output frequency	47 – 53 Hz for 50 Hz nominal; 57 – 63 Hz for 60 Hz nominal				
Waveform type	Pure Sinewave				
Output connections (NEMA)	(6) 5-15R	(4) 5-15R	(6) 5-15R	(6) 5-15R, (2) 5-20R	
Switched outlet groups	1				
<b>Input</b>					
Nominal input voltage	120V				
Input voltage range for main operations (Max adjustable)	82 – 144 (75 – 154V)				
Input frequency	50/60 Hz +/-3 Hz (auto sensing)				
Input connection	5-15P			5-20P	L5-30P
<b>Batteries and runtime</b>					
Battery type	Maintenance-free sealed lead-acid battery with suspended electrolyte; leak proof				
Replacement battery	APCRBC123	APCRBC157	APCRBC159	RBC43	
<b>Runtime estimates</b>					
200W	:24	1:10	1:32	1:24	1:26
500W	:05	:17	:26	:35	:38
700W	-	:09	:14	:24	:26
1000W	-	-	:07	:15	:17
1400W	-	-	-	:09	:11
1600W	-	-	-	:07	:09
Full load	:06	:09	:04	:05	:03
<b>Communications and management</b>					
APC SmartConnect Enabled	Yes, Features vary with Terms of Use		Yes, Features vary with Terms of Use		
Interface ports	Serial (RJ45), USB, and SmartSlot "NC" versions have AP9641 network management card pre-installed in the SmartSlot				
Control panel and audible alarms	Alpha-numeric LCD display with LED status indicators; alarm on battery, distinctive low battery alarm and configurable delays				
Emergency power off (EPO)	Optional			Yes	
<b>Physical</b>					
Maximum height (inches)	3.5	3.5	3.5	3.5	3.5
Maximum width (inches)	17.0	17.0	17.0	19.0	19.0
Maximum depth (inches)	16.0	18.0	18.0	27.0	17.0
Net weight (pounds)	38	62	63	93	97
<b>Conformance</b>					
Regulatory	UL 1778, CSA				
Warranty and equipment protection	3-year electronics, 2-year battery, and \$150,000 lifetime EPP				