

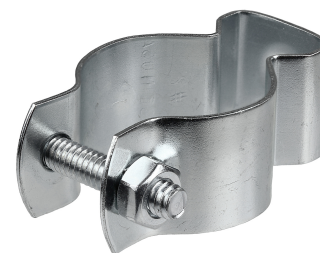
Product Specifications



4" Conduit Hanger w/ Hex Nut & Bolt

Part Number PH400B
Category Number 5220
UPC 781002283386

Conduit Hangers are used to secure and suspend EMT, PVC, or rigid conduit in overhead applications. They are zinc plated and come assembled with combo round head screws and hex nuts.



Physical Characteristics

Type	Conduit Hanger
Style	Pipe
EMT Size (in)	4"
Pipe Size (in)	4"
Rod Size	1/4"
Bolt Size	1/4"-20 x 2"
Connection	Clamp On
Material	Carbon Steel
Finish	Zinc Plated
Gauge	16

Packaging Details

Standard Qty	25
Price Per	100
Package Length	12.52
Package Width	9.84
Package Height	9.84
Net Weight	0.472
Package Weight	11.80

Performance Data

Maximum Load (lb)	230 lbs
Applications	Secures and Suspends EMT, PVC, or Rigid Conduit In Overhead Applications
Special Features	Combo Round Head Screws, Zinc Plated
For Use With	EMT, PVC, or Rigid

Certifications

RoHS Compliant	Yes
Industry Standard	UL Listed