

Wi-Fi Streaming

Just Got A Pro Upgrade



MBX-AMP

MBX-PRE

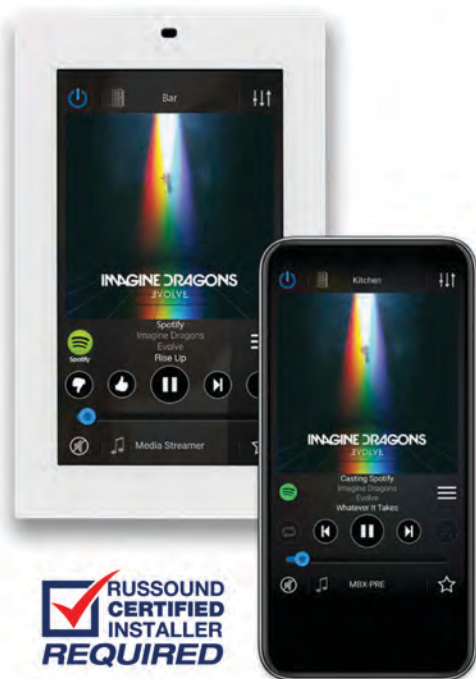
BUILT IN SERVICES AVAILABLE



Chromecast built-in



SERVICES AVAILABLE THROUGH CHROMECAST BUILT-IN



Protected against Internet sales with
 Russound's RCI Installer Program

WHAT IS CHROMECAST?

Chromecast is the most convenient, easy way to use streaming from Pandora, Spotify, Google Play Music, Rhapsody/Napster, iHeart Radio, Tidal, Slacker, Deezer, SoundCloud, YouTube Music, and Amazon Music (Android devices) among others.



To use these services, simply start one of these apps on your device, select the music you want to play and then hit the Chromecast icon (some services use a speaker icon, exact icon varies by service) to view a list of available devices for you to choose.

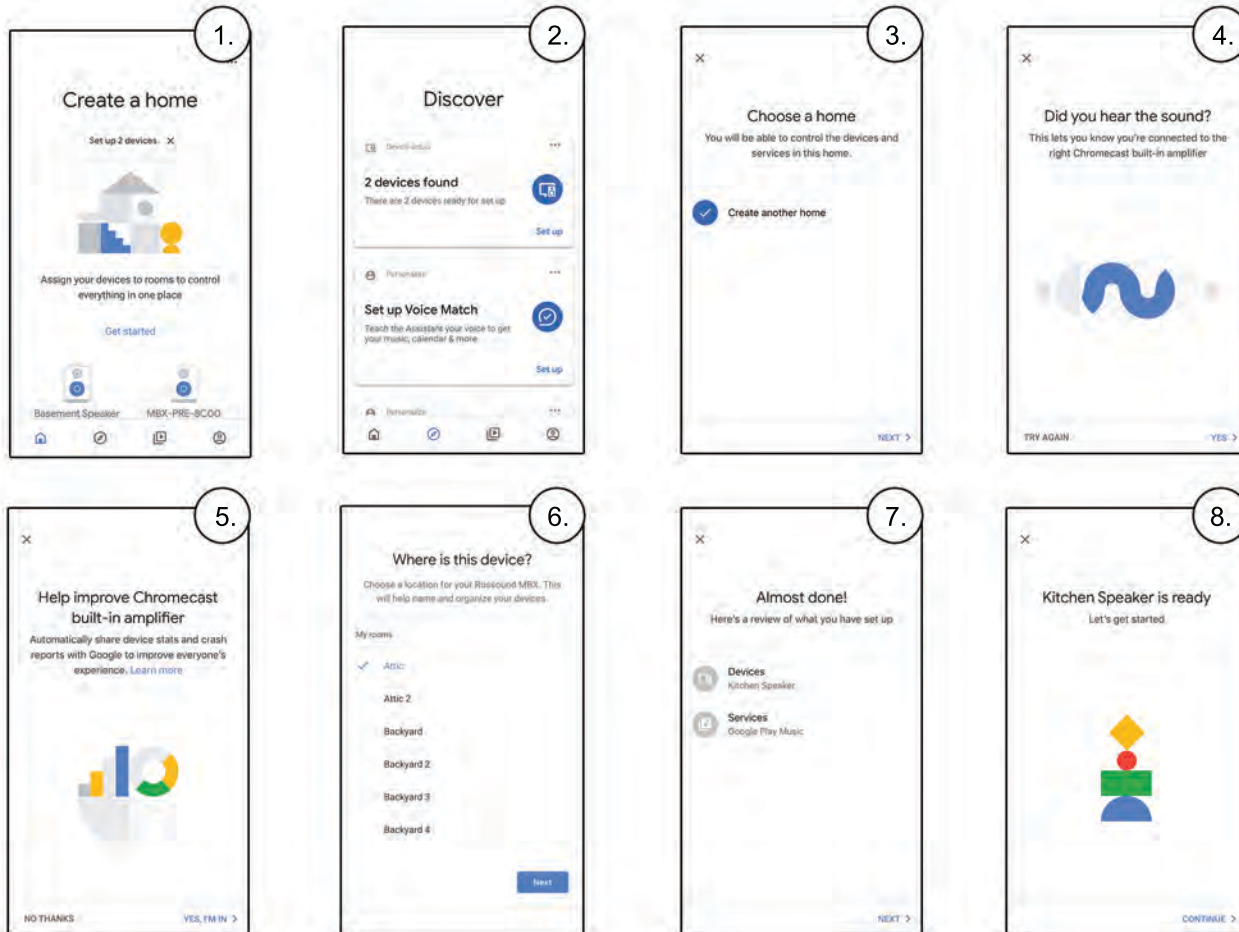
BENEFITS OF CHROMECAST

HIGHER QUALITY STREAMING – Chromecast can stream at up to 24-bit/96 kHz depending on the streaming service being used.

PHONE/TABLET NOT NEEDED TO MAINTAIN STREAMING – Once the streaming starts on your MBX product, the stream is handled by the MBX, not by your phone/tablet. You are free to make calls, text, or do anything else with your phone.

EASY ROOM GROUPING – You can use the Google Home app to create synchronized groups of your favorite rooms, or even entire areas of your home. Any group you create is instantly available to select from any Chromecast app. Grouping couldn't be easier.

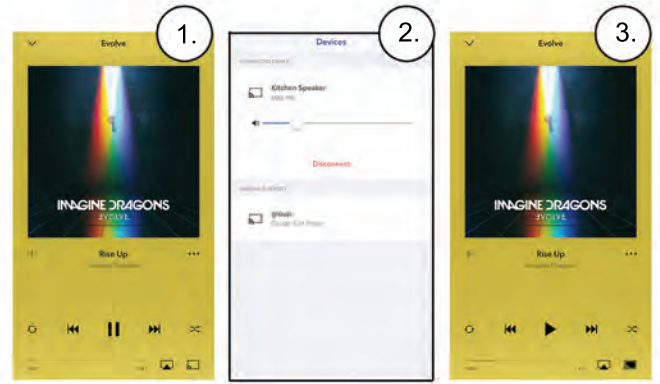
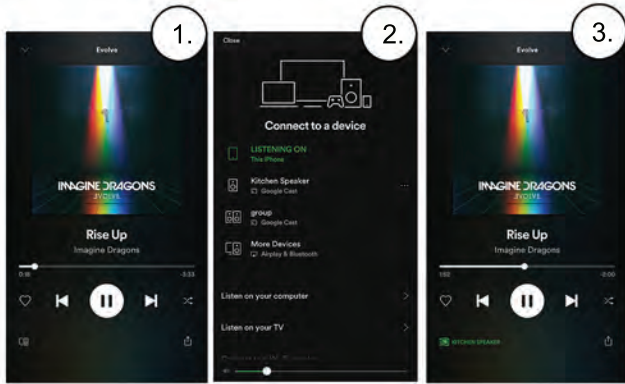
Configuring The MBX Using Google Home



Make sure you have the Google Home app already downloaded as it's required for the following steps:

1. Open Google Home and select the compass icon at the bottom to "Discover" devices.
2. The first section is titled "Device setup". Click "Set up" in blue at the bottom left of that section to proceed.
3. Add it to your home group and hit next. Click on your MBX device then hit next.
4. Your MBX device should now be connected to your Google Home app. You will hear a tone if the MBX is plugged into speakers. Hit Next.
5. A screen will come up asking to share device stats and crash reports with google. You can choose either option.
6. Choose where the device is located. You can use a custom room name if you don't see your name on the list. If you are using your MBX device as a source that is available to many different rooms, we recommend naming it as a source such as "Streamer"
7. If setting up wirelessly, complete "Connect to Wi-Fi" by choosing your network. If not, hit next and a review of all configured devices should appear.
8. A screen will appear saying that your device is now ready.

How to Use Chromecast with any Chromecast enabled App



Open the Spotify app on your mobile device and choose a song or playlist that you want to play.

Open the Pandora app on your mobile device and choose a song or playlist that you want to play.

1. On the bottom left, hit the icon that looks like a speaker in front of a computer monitor.
2. Find your speaker/group you want to play from. Hit the three dot icon to the right of it and choose "Google Cast".
3. Go back to the Now Playing screen. The icon at the bottom left should now show the green Chromecast logo and identify the speaker or group that it is connected to.

1. Click the Chromecast button on the bottom right.
2. Choose where to play the music.
3. The Chromecast logo will animate as it connects and then turn steady when your music begins to play. That's it. You're now casting to the MBX!

Adding Voice Control

with a microphone and Google Assistant built-in. This can be a Google Home, Hub, mini, etc, or even the Google Assistant on your phone or tablet.

- Make sure that this device is connected to the same network as the MBX-PRE or MBX-AMP that you want to control

