

Description

The Xtralis IntrusionTrace application provides high performance intrusion detection using video analytics specifically designed for 24/365 outdoor operation. Optimised using footage from thousands of hours of video covering a range of environmental, seasonal and time of day variations, the analytics achieve low false alarm rates while maintaining high detection probability and reliability. With simple “region of interest” configuration for the majority of scenes, IntrusionTrace can be adapted to a wide range of applications. Whether monitoring a yard, providing remote access control to a site, or creating a virtual fence around a supply depot, IntrusionTrace delivers performance where it is needed.

IntrusionTrace is now available for server platforms and edge devices. Supporting up to 32* channels on ADPRO devices and up to 8* channels on HeiTel devices, IntrusionTrace complements the powerful recording, transmission, alarm handling and flexible licensing capabilities of these established platforms with high performance video intrusion detection. IntrusionTrace also supports Honeywell and Axis edge devices such as video cameras and encoders. Running on the device itself, IntrusionTrace takes analytics to the video source, providing self-contained, high performance intrusion detection on a networked device. Close integration with the device platform ensures compliant event management and alarm reporting for seamless system integration. Where supported, device I/O can facilitate double-knock options and trigger local notifications for even greater utility. IntrusionTrace on the edge complements the rack-mount and mobile platforms with a simple camera approach to give solutions for every scenario.

Specifications

- 24/365 outdoor algorithm for perimeter and sterile zone applications
- Integrates advanced algorithms to maximize target detection and tracking
- Can detect crawling, rolling, running and slow moving targets
- Up to 16 (directional) detection zones per video channel
- Each detection zone can have its own set of parameters, to allow detection of small and large, fast and slow targets in the same scene
- Improved sensitivity controls for reducing false alarms from spiders, cloud shadows, etc.
- Support for analogue*, IP, thermal and visible light cameras
- Bounding box visualisation is available on supported CMS and VMS software for rapid alarm verification

Licensing

IntrusionTrace is a software-only, licensed product. Licenses are available in bundles, and trial licenses are available free of charge. Speak to your salesperson for details. You can also visit www.xtralis.com/analytics for the latest information on the product, and www.xtralis.com/license for information on the flexible licensing options available.

On ADPRO XO platforms, the IntrusionTrace license now includes full HLI integration with up to 34 ADPRO PIR detectors. The IntrusionTrace PLUS license is no longer needed.

Camera Considerations

Note that IntrusionTrace should only be used in the home position of PTZ cameras. Also note that built-in ring-lights on cameras are not recommended for 24/7 outdoor analytics applications, other sources of lighting should be considered.

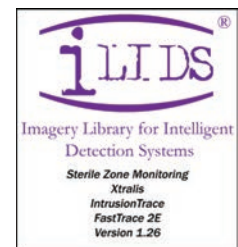
* Hardware dependent

** IntrusionTrace version 1.26 running on FastTrace 2E



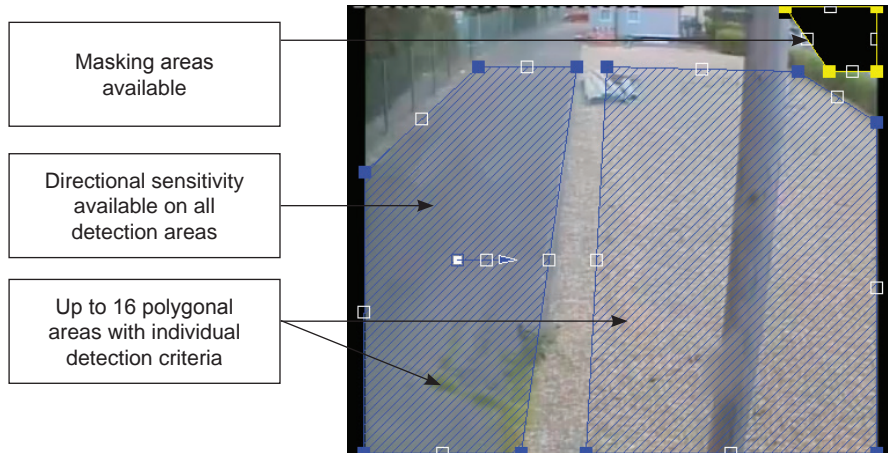
Unique Features

- One-person setup
- Fast and easy commissioning with simple region of interest detection
- 3D calibration, no learning time
- Powerful advanced parameters for improved detection probability and false alarm reduction
- Spider/insect alarm reduction
- Car headlight alarm reduction
- Up to 16 zones or directional zones per channel
- Flexible detection within the same scene by criteria per detection zone
- Full integration ensures alarm handling and transmission is consistent with the platform's capabilities
- i-LIDS® approved** as primary detection system for operational alert used in sterile zone monitoring applications
- Advanced logic to provide double/triple knock with PIR detectors and other alarms*
- Recording modes and ability to tag events for later review (with bounding boxes)*
- I/O and talk-down to sites for reacting on IntrusionTrace events*



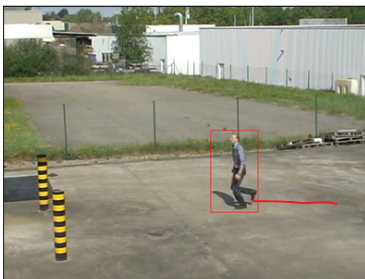
Quick and Easy Setup

- Calibration is a simple 2-position measurement
- Detection areas are quickly drawn and easily adjusted
- Default settings suit most applications out-of-the-box
- Powerful, intuitive, advanced parameters are available for challenging views

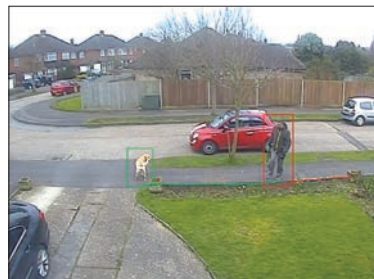


Rapid Verification

- Analytic bounding boxes highlight what caused the alarm
- Breadcrumb trails show the paths the intruders took
- Boxes and trails are available for live and stored video



Standard default parameters for easy setup covering the majority of scenes



Powerful advanced parameters allow site-specific false alarms to be minimised



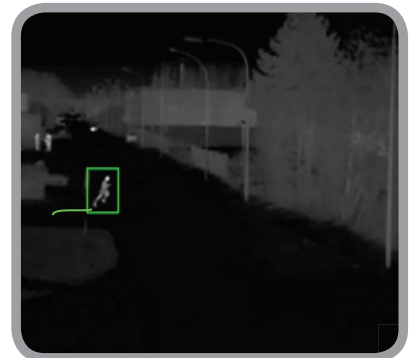
Minimum Time = 4 seconds

Minimum Time = 0.5 seconds

Detect objects with 'conflicting' criteria in the same scene



Sterile Zone Application



Thermal Camera Support



Car Headlight alarm reduction



Spider/insect Alarm reduction

www.xtralis.com

UK and Europe +44 1442 242 330 D-A-CH +49 431 23284 1 The Americas +1 781 740 2223

Middle East +962 6 588 5622 Asia +86 21 5240 0077 Australia and New Zealand +61 3 9936 7000

The contents of this document are provided on an "as is" basis. No representation or warranty (either express or implied) is made as to the completeness, accuracy or reliability of the contents of this document. The manufacturer reserves the right to change designs or specifications without obligation and without further notice. Except as otherwise provided, all warranties, express or implied, including without limitation any implied warranties of merchantability and fitness for a particular purpose are expressly excluded.

Xtralis, the Xtralis logo, The Sooner You Know, VESDA-E, VESDA, ICAM, ECO, OSID, HeiTel, ADPRO, IntrusionTrace, LoiterTrace, ClientTrace, SmokeTrace, XOa, XOh, iTrace, iCommand, iRespond, iCommission, iPIR, and FMST are trademarks and/or registered trademarks of Xtralis and/or its subsidiaries in the United States and/or other countries. Other brand names mentioned herein are for identification purposes only and may be trademarks of their respective holder(s). Your use of this document does not constitute or create a licence or any other right to use the name and/or trademark and/or label.

This document is subject to copyright owned by Xtralis. You agree not to copy, communicate to the public, adapt, distribute, transfer, sell, modify or publish any contents of this document without the express prior written consent of Xtralis.
Doc. no. 21802_17