

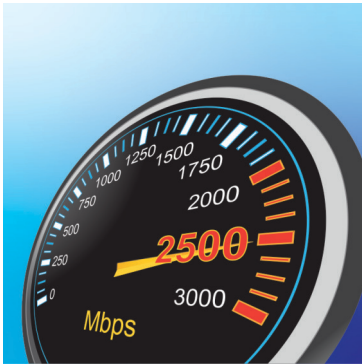


## 6-Port 2.5G Unmanaged Switch with 10G SFP+ Port

TEG-S5061 (v1.0R)

- 5 x 2.5G RJ-45 ports
- 1 x 10G fiber SFP+ port
- Compatible with existing Cat5e or better cabling
- Backward compatible Ethernet speeds of 1000Mbps
- Backward compatible of SFP speeds of 1000Mbps
- Fanless design eliminates noise
- Wall mountable for installation flexibility
- 45Gbps switching capacity
- IEEE 802.3bz (2.5G) and IEEE 802.3ae (10G SFP+) compliant
- Lifetime Warranty
- NDAA / TAA compliant (U.S. and Canada only)

Expand your network's bandwidth and reduce digital bottlenecks with TRENDnet's 6-Port 2.5G Unmanaged Switch with 10G SFP+ Port. These multi-gig network switches come equipped with 2.5GBASE-T RJ-45 ports that provide speeds capable of up to 2.5Gbps over your existing Cat5e or better cabling, and a 10G SFP+ port for long-distance fiber networking. Each multi-gig switch features a durable metal enclosure and can be mounted to the wall for setup flexibility. The fanless design lowers energy consumption and eliminates operating noise. TRENDnet's reliable switches are cost-effective solutions to increase your network's throughput.



### 2.5G Ports

Equipped with 2.5GBASE-T RJ-45 ports that provide ultra-fast speeds capable of up to 2.5Gbps over existing Cat5e or better cabling.



### 10G SFP+ Port

A dedicated 10G fiber SFP+ port for an ultra-fast network connection provides a cost-effective solution in adding 10G link capability.



### Fanless

The fanless design of the 2.5G switches with an SFP+ port lowers energy consumption costs and eliminates operating noise.

## FEATURES



### Easy Installation

No configuration needed, simply connect network devices to the 2.5G switch with an SFP+ port



### 2.5G Ports

Equipped with 2.5GBASE-T RJ-45 ports that provide speeds capable of up to 2.5Gbps over existing Cat5e or better cabling



### 10G SFP+ Port

A dedicated 10G fiber SFP+ port for an ultra-fast network connection provides a cost-effective solution in adding 10G link capability to an SMB network



### Switching Capacity

45Gbps switching capacity



### Fanless

Fanless design lowers energy consumption and eliminates operating noise



### Housing Design

Sturdy metal housing



### Wall Mountable

Features a convenient wall mountable design for greater installation flexibility



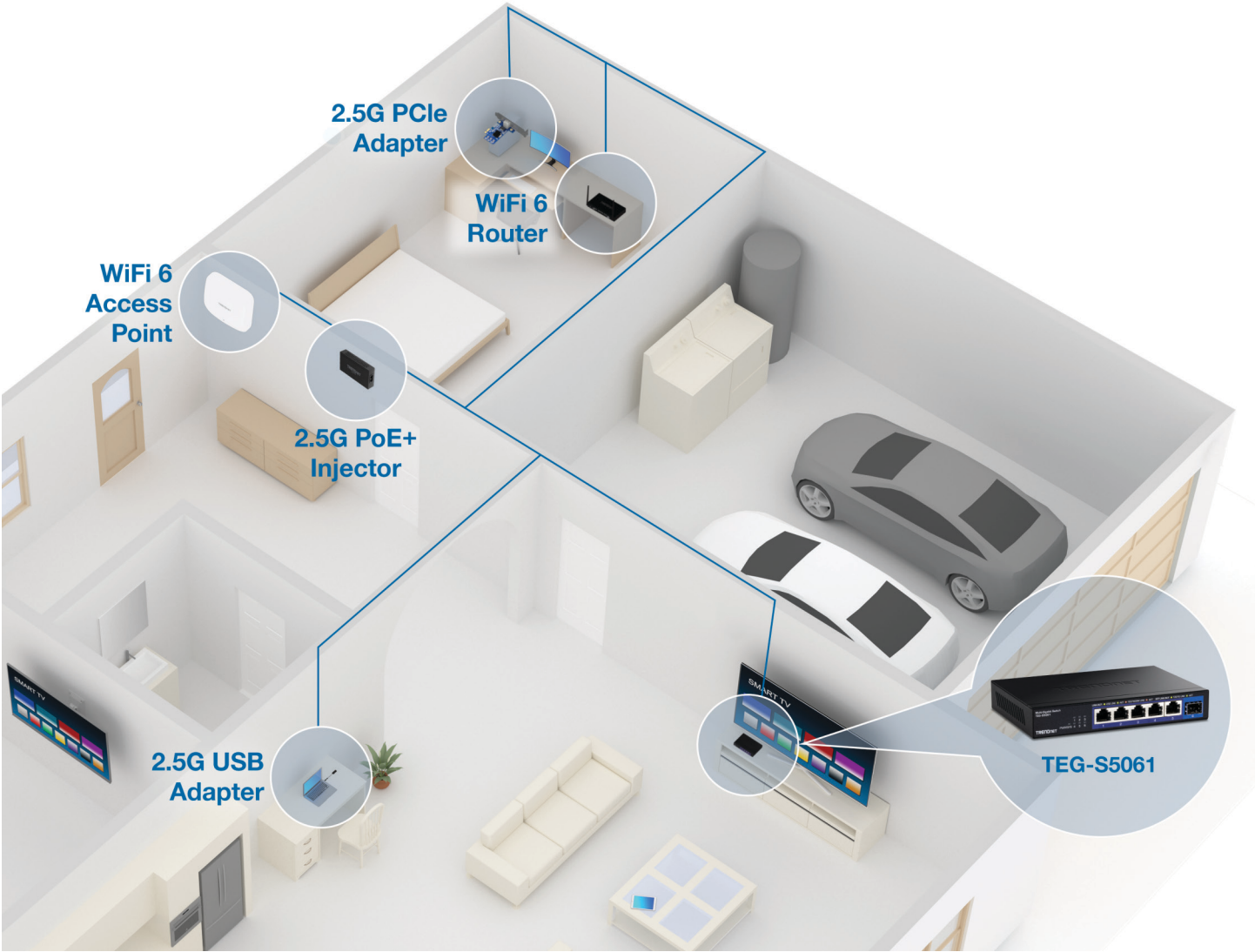
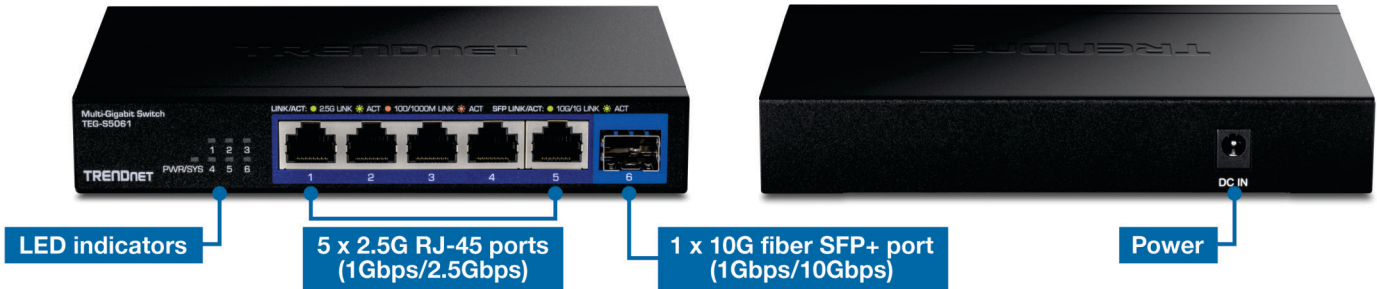
### Jumbo Frame

Sends larger packets, or Jumbo Frames (up to 12KB) for increased performance



### LED Indicators

LED indicators on this multi-gig switch convey port status



## SPECIFICATIONS

### Standards

- IEEE 802.3x
- IEEE 802.3z
- IEEE 802.3ab
- IEEE 802.3ae
- IEEE 802.3az
- IEEE 802.3bz

### Device Interface

- 5 x 2.5GBASE-T ports (1Gbps/2.5Gbps)
- 1 x 10G fiber SFP+ port (1Gbps/10Gbps)
- LED indicators

### Data Transfer Rate

- Gigabit: 2000Mbps (full duplex)
- 2.5 Gigabit: 5Gbps (full duplex)
- SFP: 2Gbps (full duplex)
- SFP+ 20Gbps (full duplex)

### Performance

- Switching Capacity: 45Gbps
- RAM Buffer: 1MB
- MAC Address Table: 4K entries
- Forwarding Rate: 33.8Mpps (64-byte packet size)
- Jumbo Frames: 12KB

### Special Features

- Wall mountable

### Power

- Input: 100 – 240V AC, 50/60 Hz, 0.5A
- Output: 12V DC, 1A external power adapter
- Max. Consumption: 9.5W

### Fan/Acoustics

- Fanless design

### MTBF

- 674,176 hours

### Operating Temperature

- 0° – 40° C (32° – 104° F)

### Operating Humidity

- Max. 90% non-condensing

### Dimensions (L x W x H)

- 160 x 110 x 26mm (6.29 x 4.33 x 1.02 in.)

### Weight

- 414g (14.6 oz.)

### Certifications

- FCC
- CE

### Warranty

- Lifetime

### Package Contents

- TEG-S5061
- Quick Installation Guide
- Power adapter (12V DC, 1A)

All references to speed are for comparison purposes only. Product specifications, size, and shape are subject to change without notice, and actual product appearance may differ from that depicted herein.

TRENDnet offers a lifetime warranty for all of its metal-enclosed network switches that have been purchased in the United States/Canada on or after 1/1/2015. Cooling fan and internal power supply carry a one-year warranty.