

Noise Canceling Headphones

Operating Instructions
Mode d'emploi
Manual de instrucciones



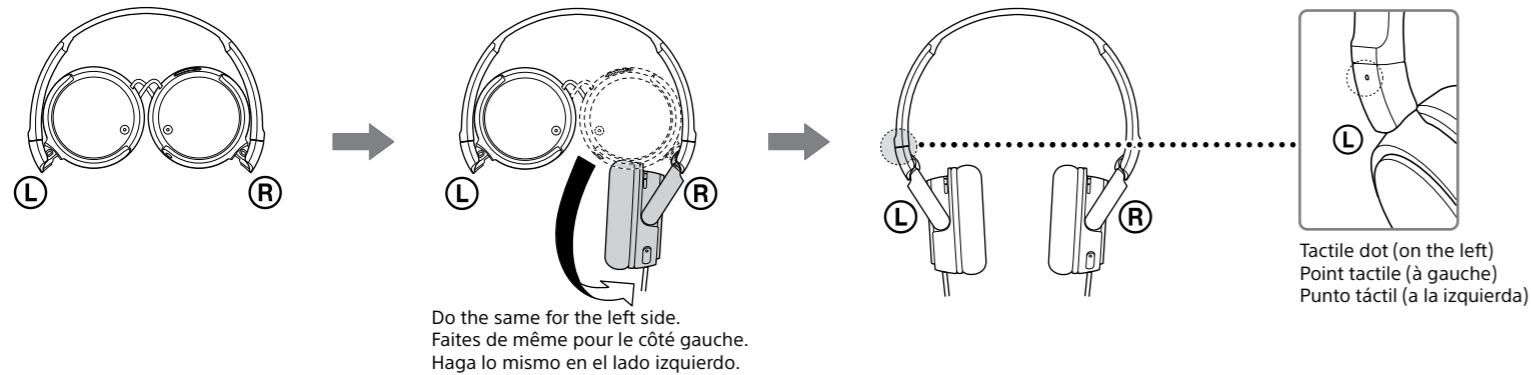
4-540-896-11(2)

© 2014 Sony Corporation Printed in Malaysia

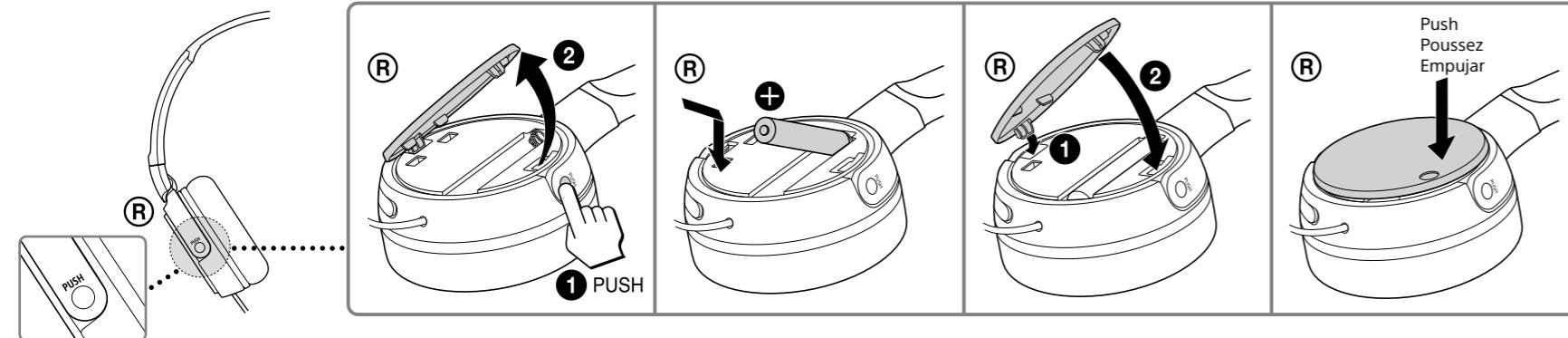
MDR-ZX110NC

How to use/Mode d'utilisation/Modo de uso

1 Unfolding the headphones/Dépliage du casque/Desplegar los auriculares

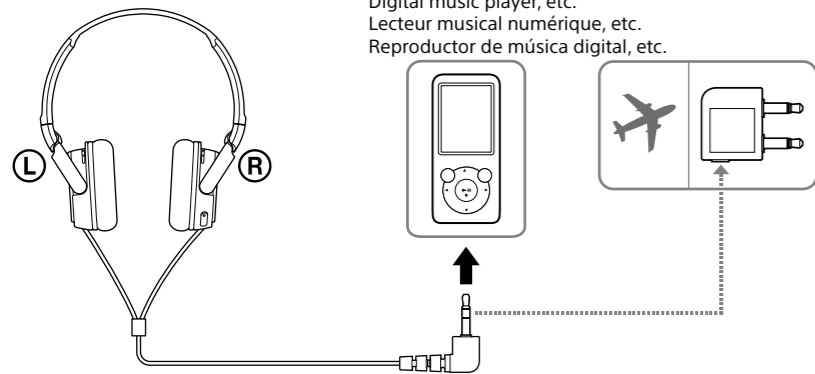


2 Installing a battery/Installation d'une pile/Colocación de la pila

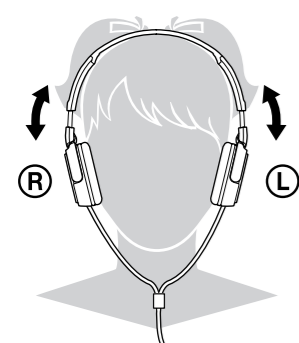


3 Connecting/Raccordement/Conexión

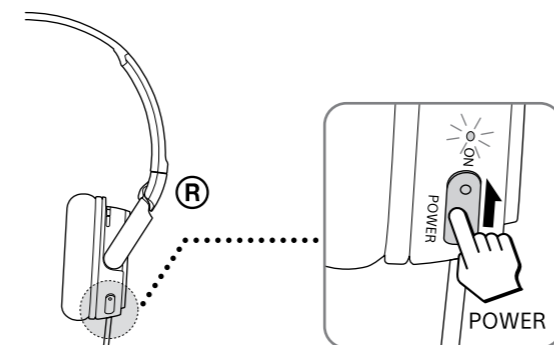
Digital music player, etc.
Lecteur musical numérique, etc.
Reproductor de música digital, etc.



5 Wearing/Port/Colocación



4 Turning on the power/Mise sous tension/Encendido



After use
Turn off the power of the headphones
Après utilisation
Éteignez le casque
Después del uso
Apague los auriculares

English Noise Canceling Headphones

WARNING

You are cautioned that any changes or modifications not expressly approved in this manual could void your authority to operate this equipment.

FOR UNITED STATES CUSTOMERS. NOT APPLICABLE IN CANADA, INCLUDING IN THE PROVINCE OF QUEBEC.

POUR LES CONSOMMATEURS AUX ÉTATS-UNIS. NON APPLICABLE AU CANADA, Y COMPRIS LA PROVINCE DE QUÉBEC.

The following FCC statement applies only to the version of this model manufactured for sale in the USA. Other versions may not comply with FCC technical regulations.

This device complies with Part 15 of the FCC Rules. Operation is subject to the following two conditions: (1) this device may not cause harmful interference, and (2) this device must accept any interference received, including interference that may cause undesired operation.

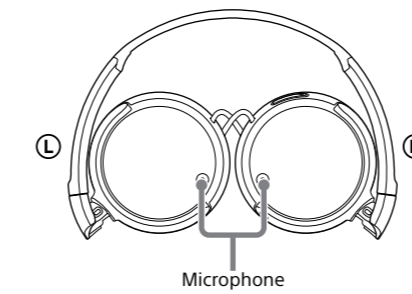
Notes on use

What is noise canceling?

The noise canceling circuit actually senses outside noise with built-in microphones and sends an equal-but-opposite canceling signal to the headphones.

Notes on the noise canceling function

- Adjust the earpads so that they cover your ears, otherwise noise canceling will not function properly.
- The noise canceling effect may vary depending on how you wear the headphones.
- Do not cover the microphone of the headphones with your hands. The noise canceling function may not work properly.



- After you turn on the power of the headphones, you may hear a slight hiss. This is the operating sound of the noise canceling function, not a malfunction.
- The noise canceling function works for noise in the low frequency band primarily. Although noise is reduced, it is not canceled completely.
- The noise canceling effect may not be pronounced in a very quiet environment, or some noise may be heard.
- When you use the headphones in a train or a car, noise may occur depending on street conditions.
- Mobile phones may cause interference and noise. Should this occur, locate the headphones further away from the mobile phone.

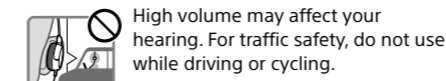
Notes on using on the airplane

Do not use the headphones when use of electronic equipment is prohibited or when use of personal headphones for in-flight entertainment services is prohibited.

Notes on handling

- Because the headphones are designed to fit closely in your ears, forcing them against your ears may result in eardrum damage. Avoid using the headphones where they are liable to be struck by people or other objects, such as a ball, etc.
- Pressing the headphones against your ears may produce a diaphragm click sound. This is not a malfunction.
- Clean the headphones with a soft dry cloth.
- Do not leave the plug dirty otherwise the sound may be distorted.
- Be sure to consult a Sony dealer when the earpads become dirty or damaged, or when the headphones require repair work.
- Do not leave the headphones in a location subject to direct sunlight, heat or moisture.
- Do not subject the headphones to excessive shock.
- Handle the driver units carefully.
- If you feel drowsy or sick while using this headphones, stop use immediately.

Notes on headphones



As headphones reduce outside sounds, they may cause a traffic accident. Also, avoid listening with your headphones in situations where hearing must not be impaired, for example, a railroad crossing, a construction site, etc.

Preventing hearing damage

Avoid using headphones at high volume. Hearing experts advise against continuous, loud and extended play. If you experience a ringing in your ears, reduce the volume or discontinue use.

Note on static electricity

In particularly dry air conditions, noise or sound skipping may occur, or mild tingling may be felt on your ears. This is a result of static electricity accumulated in the body, and not a malfunction of the headphones. The effect can be minimized by wearing clothes made from natural materials.

If you have any questions or problems concerning the system that are not covered in this manual, please consult the nearest Sony dealer.

Troubleshooting

No sound

- Check the connection of the headphones and the equipment.
- Check that the connected equipment is turned on.
- Turn up the volume of the connected equipment.
- Clean the plug of the headphones with a soft dry cloth.

The noise canceling effect is not sufficient

- The noise canceling function is effective in low frequency ranges such as airplanes, trains, or offices (near air-conditioning, etc.) and is not as effective for higher frequencies, such as human voices.
- Turn on the headphones.

Distorted sound

- Turn down the volume of the connected equipment.
- Clean the plug of the headphones with a soft dry cloth.

Power does not turn on

- Check if the battery has expired (the POWER indicator lights off) and the battery is inserted in the correct orientation. Replace the battery with a new one or reinsert the battery in the correct orientation.

No operation works

- Set the POWER switch of the headphones to "OFF", confirm the connections, and then set the POWER switch back to "ON".

Features

- 95% Ambient Noise Reduction
Noise canceling headphones reduce unwanted ambient noise and provide a quieter environment to enhance your listening experience.
- Quick folding style
Original compact folding mechanism for easy carriage and storage.
- Producing balanced, clear and powerful high quality sound
300 kJ/m³ Neodymium magnet delivers powerful sound and equalizer provides balanced sound from bass to high note.
- Able to use as a regular headphones even when the POWER switch is set to "OFF".
- Long battery life - approx. 80 hours with AAA alkaline battery.

Specifications

General

Type	Dynamic, closed
Driver units	30 mm, dome type (CCAW adopted)
Power handling capacity	40 mW
Impedance	220 Ω at 1 kHz (when the power is on) 45 Ω at 1 kHz (when the power is off)
Sensitivity	115 dB/mW (when the power is on) 110 dB/mW (when the power is off)
Frequency response	10 Hz – 22,000 Hz
Total Noise Suppression Ratio ¹⁾	Approx. 13 dB ²⁾
Cable	Approx. 1.2 m (47 1/4 in), OFC Litz wire
Plug	Three-conductor gold plated L-shaped stereo mini plug
Power source	DC 1.5 V, 1 × R03 (size AAA) battery
Mass	Approx. 150 g (5.3 oz) including battery, not including cable

Battery life

Battery	Approx. hours ³⁾
Sony alkaline battery LR03 SIZE AAA	80 hours ⁴⁾
Sony manganese battery R03 SIZE AAA	40 hours ⁴⁾

Note

The supplied battery was included in the package during manufacturing (as a convenience to the user), it is possible that the battery life may be depleted by the time of purchase. The actual life of the supplied battery may be shorter than the standard time described in this manual when using a fresh battery.

When the battery is low

Replace the battery with a new one when the POWER indicator blinks or lights off.

Notes

- The sound and noise canceling effect may become intermittent when the battery is low.
- The headphones will automatically switch to passive mode when the battery power is empty. You might hear the sound characteristics change in this mode.

Included items

- Headphones (1)
- Plug adaptor for in-flight use⁵⁾ (1)
- Sony R03 (SIZE AAA) battery (1)
- Operating Instructions (1)
- Warranty card (USA) (1)
- Warranty card (Canada) (1)

¹⁾ Under the Sony measurement standard.

²⁾ Equivalent to approx. 95% reduction of energy of sound compared with not wearing headphones.

³⁾ At 1 kHz, 0.1 mW + 0.1 mW output

⁴⁾ Time stated above may vary, depending on the temperature or conditions of use.

⁵⁾ May not be compatible with some in-flight entertainment services.

Design and specifications are subject to change without notice.

