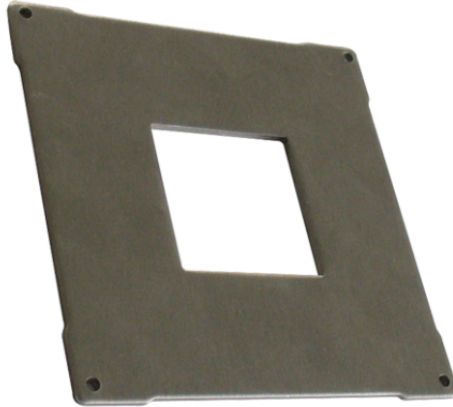




3179

VANDALCOM SERIES PRE-SET MODULE FOR SIMPLEKEY READER



Pre-set Vandalcom module for housing the SimpleKey unit SK9000-SK9001-SK9030.
Dimensions: 106 x 106 x 9 mm



3179

VANDALCOM SERIES PRE-SET MODULE FOR SIMPLEKEY READER

Height (inch) (in)	4.17
Width (inch) (in)	4.17
Depth (inch) (in)	2.2
Product color	Grey
Flush-mounted	Yes
Wall-mounted	Yes



3179

VANDALCOM SERIES PRE-SET MODULE FOR SIMPLEKEY READER



SK9030 INTEGRATE READER

Mifare® reader to insert into Comelit housing, Watertight PVC housing, 2 operation LEDs, Connected to management unit by 2 wires + power supply, Maximum range 1000 m, Wiegand output for use with non-Comelit management modules, 12Vdc power supply, Dimensions: 63 x 108 x 23 mm, To be completed with SK9020 control unit