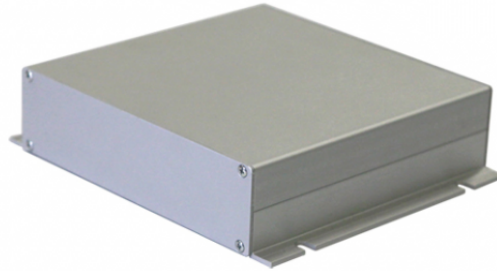




1452

VIP SYSTEM REMOTE CONNECTION INTERFACE



The interface connected to the VIP system allows the system to be managed remotely through the Internet. A router with an Internet connection must be connected to the system.



1452

VIP SYSTEM REMOTE CONNECTION INTERFACE

ELECTRICAL CHARACTERISTICS

| | |
|------------------|---------------------|
| PoE power supply | Comelit PoE (56VDC) |
|------------------|---------------------|

GENERAL FEATURES

| | |
|-------------------|--|
| CE certifications | RoHS II - 2011/65/UE (EN IEC 63000:2018), EMC 2014/30/UE (EN 61000-6-1:2007 , EN 61000-6-3:2007+A1:2011) |
|-------------------|--|

MAIN FEATURES

| | |
|---------------------------------|----------|
| Height (inch) (in) | 1.73 |
| Width (inch) (in) | 6.5 |
| Depth (inch) (in) | 7.48 |
| Product weight (oz) (oz) | 29.35 |
| Operating temperature (°F) | 23 ÷ 131 |
| Maximum current absorption (mA) | 180 |

SOFTWARE/FIRMWARE SPECIFICATIONS

| | |
|---------------|-----------------------|
| IP assignment | AUTO IP, DHCP, STATIC |
|---------------|-----------------------|

GENERAL DATA

| | |
|-----------------------------|------------------------|
| Type of finishing materials | Metallic |
| Product color | Grey |
| ViP | Yes |
| Communication ports | RJ45 (Ethernet) |
| Type of LAN network | Ethernet 10/100 Mbit/s |
| IP address assignment | Auto IP, DHCP, Static |

COMPATIBILITY

| | |
|------------|-----|
| Vip system | Yes |
|------------|-----|

MOUNTING/INSTALLATION

| | |
|--------------|-----|
| Wall-mounted | Yes |
|--------------|-----|



1452

VIP SYSTEM REMOTE CONNECTION INTERFACE

| CONNECTIVITY | |
|---------------------------|--------------------------|
| Type of connections/ports | 1xEthernet 10/100 Mbit/s |
| Ethernet ports (n°) | 1 |