

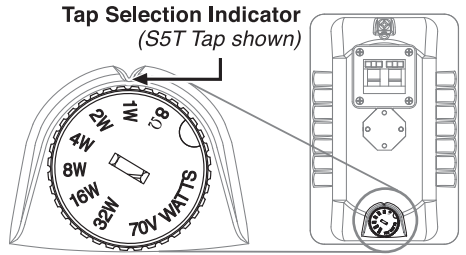
Owner's Guide: Models S4T and S5T

Installation Instruction Manual

Power Tap Selection

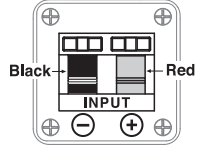
S5T – 8-ohm or 70V - 32W/16W/8W/4W/2W/1W
 S4T – 8-ohm or 70V - 16W/8W/4W/2W/1W

IMPORTANT: When connecting to a 70V amplifier, make sure that the Tap Selector is not in the “8Ω” position.



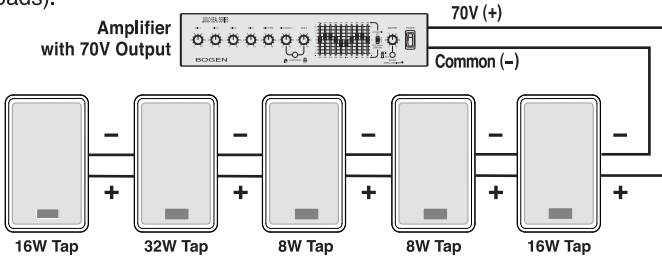
Speaker Connections and Polarity

Strip about 1/2” of insulation from the wires. Push down on the spring clamps, and insert the wire into the hole, then release the clamp. To ensure proper polarity, wire black terminals to black terminals and red terminals to red terminals on the same speaker run.



70V System Configurations

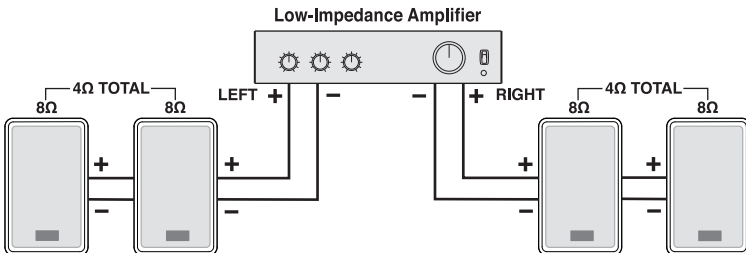
When designing a 70V system, the total of all power tap settings of all the connected speakers CANNOT EXCEED the output power of the 70V amplifier (amplifier power can exceed the sum of the speaker loads).



EXAMPLE: 16 + 32 + 8 + 8 + 16 = 80 Watts minimum amplifier output power rating.

Low-Impedance System Configurations

When wiring together multiple Bogen Signature speakers set to 8 ohms, it is important to calculate (using Ohm’s Law) the total load that these speakers present to the amplifier. The total load impedance of the interconnected speakers cannot be lower than the minimum load impedance rating of the low-impedance amplifier. Also care must be taken to ensure the amplifier cannot overdrive the speaker’s max power rating.

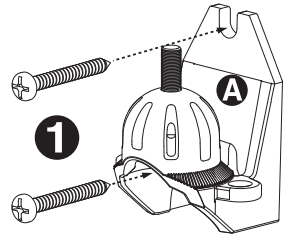


EXAMPLE: Two 8Ω speakers in parallel = 4Ω. The amplifier must be rated to work into 4Ω loads. Also in this example, the max amplifier output power rating (each channel into 4Ω) should not exceed 150W for S4/T (2 X 75W) speakers or 300 for S5/T (2 X 150W).

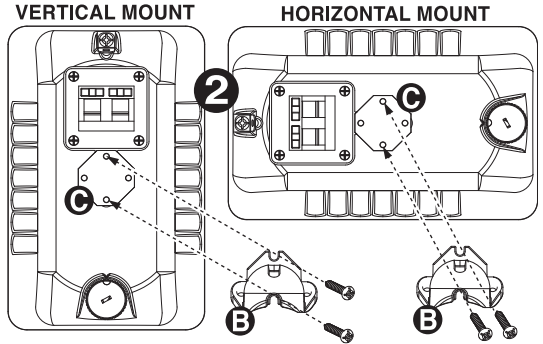
Wall-Mounting Instructions

1. Secure Mounting Base (A) to wall as shown.

IMPORTANT: THE WALL MATERIAL AND USER SUPPLIED ATTACHMENT HARDWARE MUST BE ABLE TO RESIST A PULL OUT FORCE OF AT LEAST 10X THE WEIGHT OF THE SPEAKER.

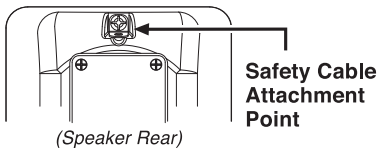
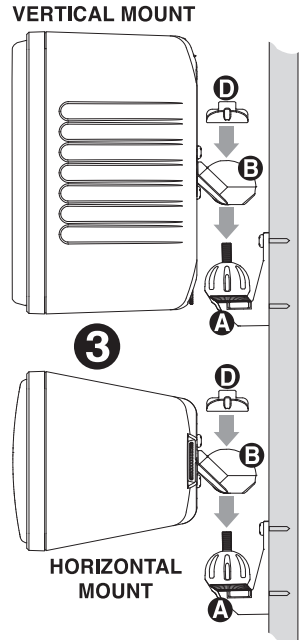


2. Determine the desired orientation (horizontal or vertical) for the speaker. Attach the Mounting Cup Bracket (B) to the indentation (C) on the back of the speaker enclosure using the two supplied M5 screws as shown.



3. Connect the speaker wires to the rear input terminals on the loudspeaker. Set the speaker with Mounting Cup Bracket (B) over the Mounting Base (A). Loosely screw the Mounting Cap Nut (D) onto the Mounting Base threaded stud.

Aim the speaker and then firmly tighten the Mounting Cap Nut (D) with a 1/2" nut driver or socket wrench. Be careful not to over-tighten.



Safety Cable Attachment Point

The Bogen Signature speakers provide an attachment point for a user-supplied safety cable. The other end of the safety cable must be attached to a user-supplied anchor independent of the speaker mounting hardware. All hardware, including the cable, must be rated to withstand a force 10X greater than the weight of the speaker.

Care & Maintenance

If needed, you may clean the speaker cabinet by using only soap and water with a soft cloth to wipe gently.

Technical Specifications

	S4T	S5T
Frequency Response (-10 dB)*:	58 Hz to 18 kHz	48 Hz to 17 kHz
Low Frequency Design – Metal-Composite Cone Utilizing MLS Voice Coil Guidance System:	4-1/2" Nominal Dia.	5-1/4" Nominal Dia.
High Frequency Driver – Titanium Cone:	1" Nominal Dia.	1" Horn-Loaded
Sensitivity (1W/1m, Ave. 100 Hz to 15 kHz):	86 dB SPL	89 dB SPL
Dispersion <i>Horizontal:</i>	150 Degrees	130 Degrees
<i>Vertical:</i>	120 Degrees	110 Degrees
Impedance Ratings	70V and 8Ω (S4T version)	70V and 8Ω (S5T version)
Power Input (Maximum):	75W @ 8 ohms	150W @ 8 ohms
Power Taps 70V:	16, 8, 4, 2, 1 watts	32, 16, 8, 4, 2, 1 watts
Product Weight:	6 lbs.	9 lbs.
Speaker Dimensions (WxHxD) <i>Without Bracket:</i>	5-1/4" x 8-1/4" x 5-3/8"	6-7/8" x 9-3/4" x 6-1/8"
<i>With Bracket:</i>	5-1/4" x 8-1/4" x 7-3/8"	6-7/8" x 9-3/4" x 8-1/8"
Enclosure Material:	High-Impact ABS	
Product Color:	White ("W" suffix) and Black ("B" suffix)	
Mounting Bracket Material:	Aluminum Alloy, Powder-Coated Finish	
Grille Material:	Perforated Aluminum, Powder-Coated Finish	
Terminations:	Pressure Clamp	
Included Accessories:	Color-Matched Mounting Bracket	
Optional Accessories:	Safety Cable CK10	

* Half-Space Response

Limited Warranty; Exclusion of Certain Damages

The **Bogen Signature Series** speakers are warranted to be free from defects in material and workmanship for 5 (five) years from the date of sale to the original purchaser. Any part of the product covered by this warranty that, with normal installation and use, becomes defective (as confirmed by Bogen upon inspection) during the applicable warranty period, will be repaired or replaced by Bogen, at Bogen's option, provided the product is shipped insured and prepaid to: Bogen Factory Service Department, 4570 Shelby Air Drive, Suite 11, Memphis TN 38118, USA. Repaired or replacement product will be returned to you freight prepaid. This warranty does not extend to any of our products that have been subjected to abuse, misuse, improper storage, neglect, accident, improper installation or have been modified or repaired or altered in any manner whatsoever, or where the serial number or date code has been removed or defaced.

THE FOREGOING LIMITED WARRANTY IS BOGEN'S SOLE AND EXCLUSIVE WARRANTY AND THE PURCHASER'S SOLE AND EXCLUSIVE REMEDY. BOGEN MAKES NO OTHER WARRANTIES OF ANY KIND, EITHER EXPRESS OR IMPLIED, AND ALL IMPLIED WARRANTIES OF MERCHANTABILITY OR FITNESS FOR A PARTICULAR PURPOSE ARE HEREBY DISCLAIMED AND EXCLUDED TO THE MAXIMUM EXTENT ALLOWABLE BY LAW. Bogen's liability arising out of the manufacture, sale or supplying of products or their use or disposition, whether based upon warranty, contract, tort or otherwise, shall be limited to the price of the product. **IN NO EVENT SHALL BOGEN BE LIABLE FOR SPECIAL, INCIDENTAL OR CONSEQUENTIAL DAMAGES (INCLUDING, BUT NOT LIMITED TO, LOSS OF PROFITS, LOSS OF DATA OR LOSS OF USE DAMAGES) ARISING OUT OF THE MANUFACTURE, SALE OR SUPPLYING OF PRODUCTS, EVEN IF BOGEN HAS BEEN ADVISED OF THE POSSIBILITY OF SUCH DAMAGES OR LOSSES.** Some States do not allow the exclusion or limitation of incidental or consequential damages, so the above limitation or exclusion may not apply to you. This warranty gives you specific legal rights, and you may also have other rights which vary from State to State.

Products that are out of warranty will also be repaired by the Bogen Factory Service Department – same address as above or call 201-934-8500. The parts and labor involved in these repairs are warranted for 90 days when repaired by the Bogen Factory Service Department. All shipping charges in addition to parts and labor charges will be at the owner's expense. All returns require a Return Authorization number. For most efficient warranty or repair service, please include a description of the failure.

11/2014