



# Smart-UPS Ultra

Half the size and weight, more power protection, 3x the battery life

The most trusted UPS brand brings you the future of uninterruptible power

[apc.com/smart-ups-ultra](http://apc.com/smart-ups-ultra)

Life Is On



# The world's most popular network and server UPS, now half the size and weight



APC Smart-UPS™ Ultra is the industry's first 1U 3kW UPS and smallest and lightest Lithium-ion 5kW UPS

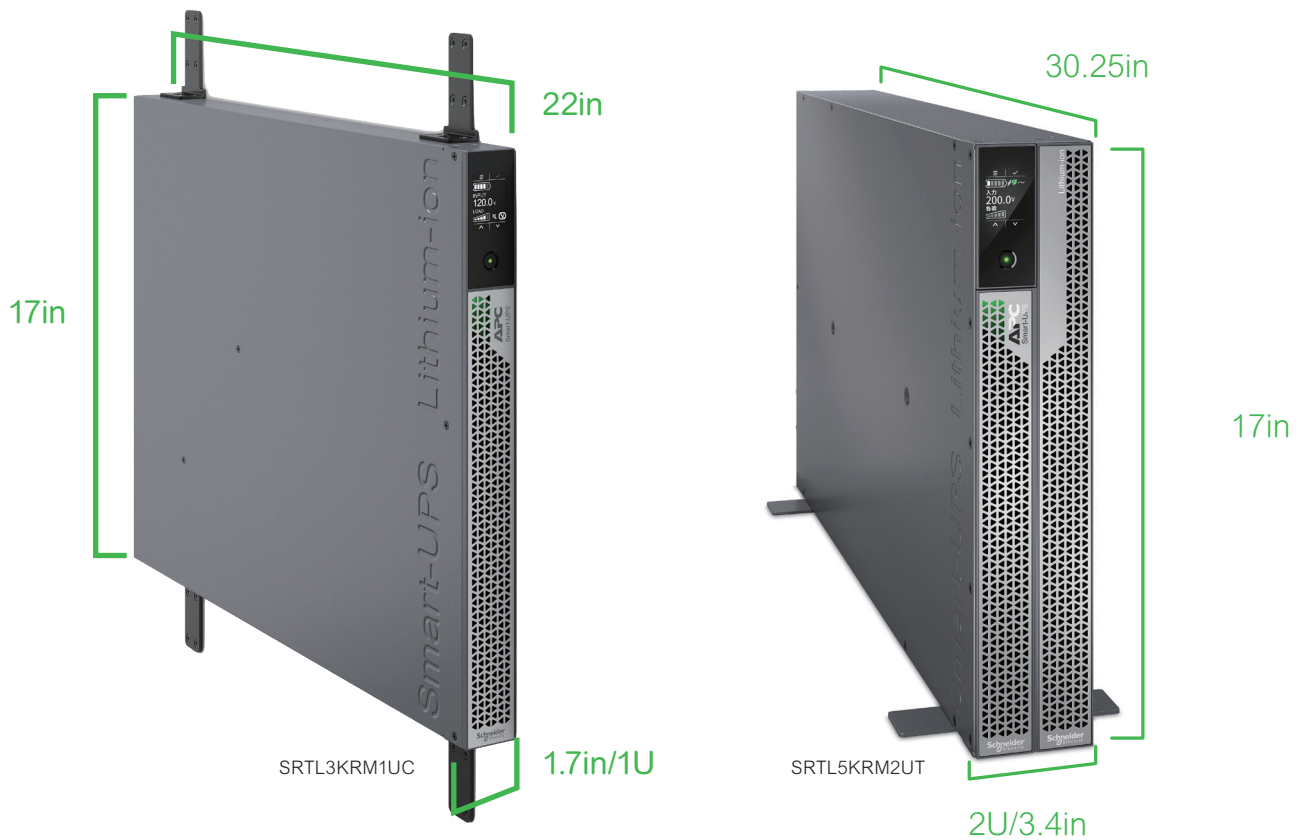
The world's most popular UPS is now available with a smaller design and improved battery life. APC's Smart-UPS Ultra offers trusted, premium power protection to ensure network and data availability. Designed for local edge environments and micro data centers, the Smart-UPS Ultra provides consistent and reliable connectivity at the most critical moments. The UPS's light and compact size allow for installation on the wall or ceilings for top-tier flexibility. Increased UPS battery life and lower maintenance service costs provide a lower total cost of ownership over 10 years.

That's Certainty in a Connected World.

# Installation flexibility, like never before

All-in-one mounting brackets for rack, tower, wall, ceiling and desk under mount\*

With Smart-UPS™ Ultra you can put power protection in places never before possible. At half the size and weight of comparable UPS available on the market today, the mounting brackets can be used in any of the 4 mounting styles: rack, tower, wall and ceiling/ desk under mount. The auto-rotating touch screen display makes switching between horizontal and vertical mounting options instantaneous.



\*wall, ceiling and desk under mount not available on SRTL5KRM2UT

# Perfect for more installations

When your UPS gives you more power and takes up less space, you have more space for IT equipment

## Fits in more applications than ever before

Due to its small size, Smart-UPS Ultra easily supports back office, network infrastructure and IDF/MDF closets. Install the UPS in out-of-the-way mounting options in small edge environments, retail or back offices.

With more power, Smart-UPS Ultra supports larger branch offices, financial institutions, grocery stores and light industrial manufacturing Healthcare installations such as hospitals, labs and remote clinics.



## Delivers both power and extended runtime

Smart-UPS Ultra supplies up to 5000 Watts of power protection. With extended runtime options of up to 10 external battery packs, you can get the extended runtime you need for critical applications.



## Predictable operational budget

Perfect for limited operational budgets such as Education and Government, UPS with Lithium-ion batteries can remove battery replacement costs up to 3 times! Smart-UPS Ultra batteries last 8-10 years, 3x that of lead acid (VRLA) batteries, which means that under normal operating conditions, the battery will last the life of the UPS.



## Perfect for distributed IT

If you have more than one IT site to manage, Smart-UPS Ultra's EcoStruxure Ready remote monitoring and management options make owning a UPS easy, whether one UPS or a fleet of UPS. Remote management allows many tasks to be taken care of without stepping foot in your IT installation. Predictive monitoring and maintenance minimized trips to far-away IT sites.

# Smart-UPS Ultra 3kW features

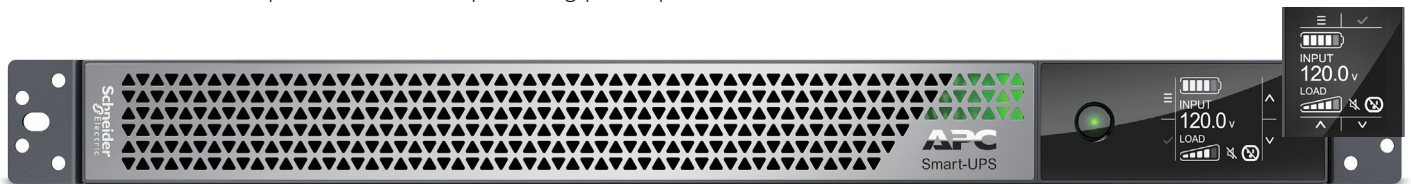
Half the size and weight, remote monitoring management and services with extended runtime options

## 50% smaller and lighter, 2.5x more power

Smaller & lighter gives you the flexibility to install anywhere: rack (2 post, 4 post), tower, wall, ceiling and desk under-mount options without compromising power protection needs

## High resolution LCD

Auto-rotating display



## 3x the battery life

The Lithium-ion battery lasts 8-10 years (3x VRLA) and won't need to be replaced under normal operating condition, reducing Total Cost of Ownership

## LED status indicator

At-a-glance indication of UPS Status

## 6 outlets in 1U

Including switched outlet group and pigtail NEMA L5-30R

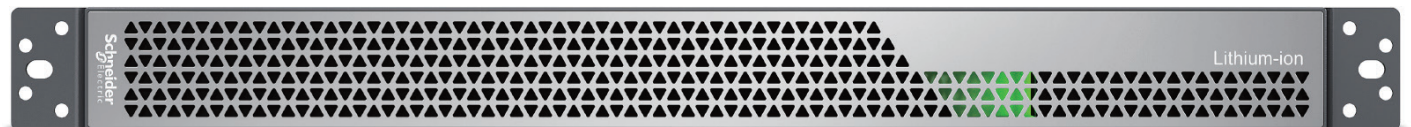
SRTL3KRM1UC



SRTL3KRM1UNC

## EcoStruxure Ready

Connect to either the Smart-UPS™ Portal or to EcoStruxure™ IT via the SmartConnect Ethernet Port or embedded network port



## Extended Runtime options

Up to 5 external battery packs supported

# Smart-UPS Ultra 5kW features

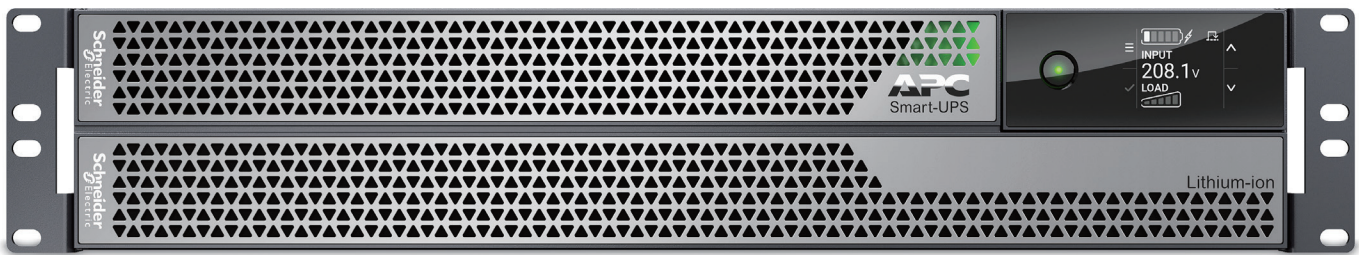
The smallest and lightest Lithium-ion 5kW UPS

## 30% smaller, 50% lighter, 1.5x more power

Next-gen semiconductor technology gives this UPS 1.5x more power in a 2U footprint.

## High resolution LCD

Auto-rotating display with virtual touch keys



## LED status indicator

At-a-glance indication of UPS Status

## 3x the battery life

The Lithium-ion battery lasts 8-10 years (3x VRLA) and won't need to be replaced under normal operating conditions, reducing Total Cost of Ownership

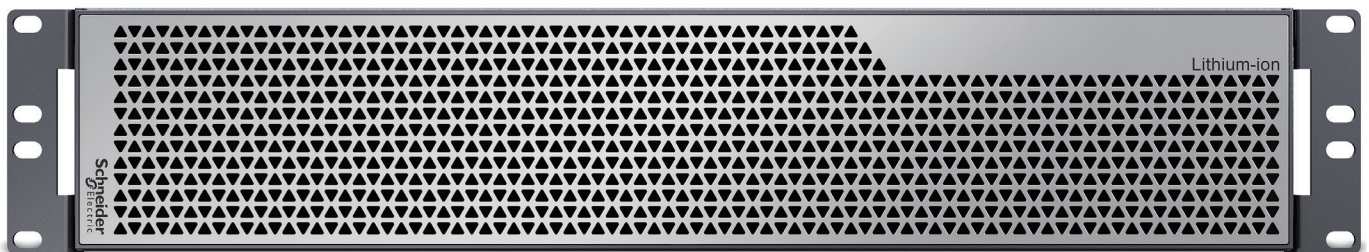


## EcoStruxure Ready

Connect to EcoStruxure™ IT via the embedded network port

## Extended Runtime options

Up to 10 external battery packs



# Smart-UPS management solutions

## Enable wireless communication

### Save network ports by using WiFi Device

The APC USB Wi-Fi Device (AP9834) is a wireless communication accessory for network-based UPS management that replaces traditional wired network cabling allowing for:

- Faster installation
- Operational efficiency
- Reduced downstream costs
- Removal of cable clutter
- More deployment flexibility



Compatible with Smart-UPS Ultra NC models, Smart-UPS with Network Management Card 3 (AP9641, AP9643), pre-installed or embedded.



## PowerChute Business Edition

### Built-in manageability for your UPS

Graceful system shutdown of connected equipment during an extended power outage or computer problem.



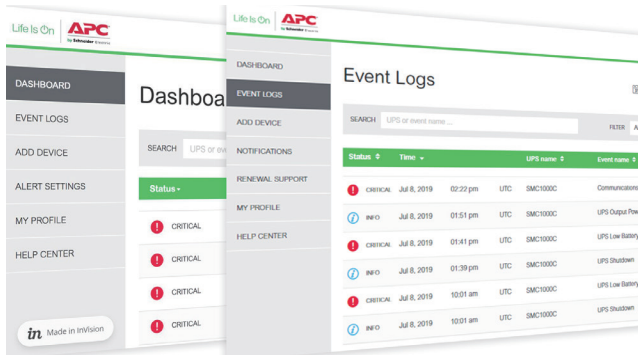
## PowerChute Network Shutdown\*

### Provides graceful network-based shutdown of physical and virtual IT architectures

Network-based, graceful, unattended shutdown and restart of your physical servers and virtual machines during prolonged power disturbances.

# EcoStruxure Ready Smart-UPS

Secure monitoring and UPS fleet management.

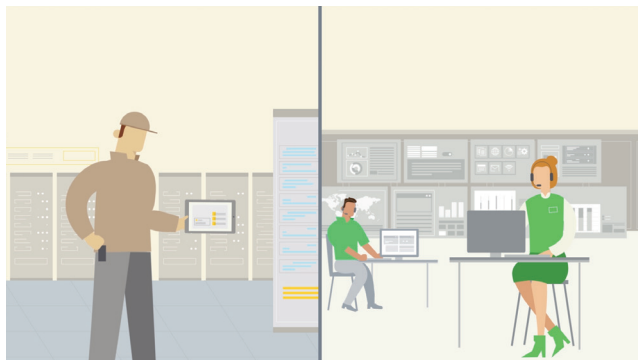


EcoStruxure Ready Smart-UPS

## Smart-UPS Web Portal for remote monitoring

Provides visibility directly to the customer to help make proactive decisions and maximize uptime via the SmartConnect Ethernet Port.

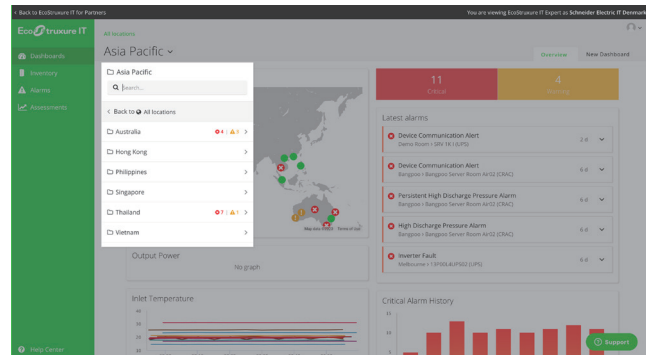
Ideal for small and medium businesses who prefer to self-manage.



EcoStruxure IT Asset Advisor

## We advise, you maintain

We provide monitoring services, and you handle the maintenance. This option appeals most to partners who want to use their own on-site service.



EcoStruxure IT Expert

## The do-it-yourself advanced monitoring

We empower you to monitor and service customers on your own or provide EcoStruxure IT Expert to your customers who prefer a self-managed option.

Ideal for distributed IT sites and businesses with mixed IT environments.



EcoStruxure IT Monitoring and Dispatch

## We monitor and service

We provide monitoring and maintenance services on your behalf. Ideal for IT solution providers who want to add service without additional cost to your business model.



# Smart-UPS 3kW accessories

## UPS management accessories

- AP9834: APC USB Wi-Fi Device compatible with SRTL3KRM1UNC
- AP9810: dry contact I/O accessory
- AP9335T & AP9335TH: sensor



AP9834

## Service bypass panels

- SBP3000RM: APC SERVICE BYPASS PDU, 120V 30AMP W/ (4) NEMA 5-20R AND (1) L5-30R
- SBP3000RM2U: APC Service Bypass Panel- 100-120V; 30A; BBM; L5-30P input; (2) 5-20R (6) 5-15R output

## Power distribution units

- AP7900B: APC Rack PDU Switched, 1U, 15A, 120V, (8) NEMA 5-15R
- AP9562: APC Rack PDU, Basic, 1U, 15A, 120V, (10) NEMA 5-15R
- AP9567: APC Rack PDU, Basic, Zero U, 15A, 120V, (14) NEMA 5-15R



AP9562

## External battery pack

- SRTL50RMBP1U-LI: 1U external battery pack



SRTL50RMBP1U-LI

# Smart-UPS 5kW accessories

## UPS management accessories

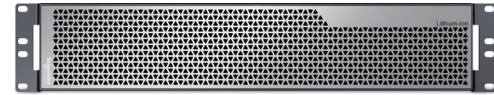
- AP9834: APC USB Wi-Fi Device
- AP9810: dry contact I/O accessory
- AP9335T & AP9335TH: sensor



AP9834

## Battery packs:

- SRTL180RM2UBP: APC Smart-UPS Ultra On-Line Lithium ion XBP 180V 2U Rack/Tower



SRTL180RM2UBP

## Rail kits:

- SRTRK2: APC Smart UPS SRT 19 inch rail kit for Smart UPS SRTL 5kW

## Backplate kit:

- SRTL002: APC Smart-UPS Ultra On-Line 5KVA OUTPUT Hardwire KIT
- SRTL004: APC Smart-UPS Ultra On-Line 5KVA PDU 208V (4) L6-20
- SRTL005: APC Smart-UPS Ultra On-Line 5KVA PDU 208V (2)L6-30 (2)L6-20 Pigtail

## Service bypass panels:

- SBP5000RMT2U: APC service bypass panel — 200/208/240 V; 30 A; BBM; L6 30P input; (2) L6 30R (2) L6 20R output
- SBP5000RMI2U: APC SERVICE BYPASS PANEL - 230V; 32A; BBM; IEC320 C20/HW INPUT; IEC-320 OUTPUT - (2) C19 (8) C13

## Output step down transformers

- SRTL5KTF: APC Smart UPS Ultra SRTL 5kW tower isolation/step down transformer (coming soon)

## Replacement battery cartridge

- SRYLBM: APC Smart-UPS Modular Ultra On-Line Lithium-ion Battery Module (coming soon)

## Others

- SRTL006: APC Smart-UPS Ultra On-Line 15ft Extension Cable for SRTL 5K 180V XBP
- SRTL007: APC Smart-UPS Ultra On-Line L6-20 to L6-20 200mm adapter cable for SRTL 5K
- SRTL008: APC Smart-UPS Ultra On-Line L6-30 to L6-30 200mm adapter cable for SRTL 5K

# Smart-UPS Ultra

## SKU technical specifications



	SRTL3KRM1UC	SRTL3KRM1UNC
Topology	On-Line	
<b>Output</b>		
Output power capacity	3000VA/3000W 125VAC 2880VA/2880W 120VAC	
Nominal output voltage	120V, 125V	
Output voltage distortion	Less than 5% at full load	
Output frequency	50/60 Hz $\pm$ 3 Hz (auto sense follow Input AC freq.) 50 or 60 $\pm$ 1Hz (battery mode)	
Waveform type	Sine Wave	
Output connections	(5) NEMA 5-20R (1) x NEMA L5-30R	
Switched outlet group	Yes	
Efficiency green mode	97%	
<b>Input</b>		
Nominal input voltage	120V, 125V	
Input frequency	50/60Hz +/- 3Hz	
Input connections	NEMA L5-30P	
Input voltage range for main operations	125 ~ 145VAC (3000 Watt)	
<b>Batteries and runtime</b>		
Battery type	Lithium-ion	
Runtime (3000W/ 1500W)	4 min / 10 min	
Runtime + 1 external battery (3000W/ 1500W)	21.6 min / 47.3 min	
External battery*	up to 5 external	
<b>Communications and management</b>		
Interface port(s)	USB-B, RJ-45, Ethernet, EPO	USB-A, USB-B, Ethernet, Universal I/O, EPO
Network management	SmartConnect, Modbus over TCP/IP	Network Management Card Embedded
Control panel	Auto-rotating, multicolor high resolution LCD with virtual touch keys	
<b>Physical</b>		
Net HxWxD	43mm (1.7in) x 432mm (17in) x 560mm (22in)	
Net weight	35lbs (15.9kg)	
<b>Environmental</b>		
Operating environment	32 – 104 °F (0 – 40 °C)	
Operating elevation	0-10000 feet (0-3000 meters)	
Storage temperature	5 – 113 °F (-15 – 45 °C) short term storage	
Storage relative humidity	0 – 95%, non-condensing	
Storage elevation	0-50000 feet (0-15000 meters)	
<b>Conformance</b>		
Regulatory approvals	UPS: UL (UL 1778 for US), cUL (CSA 107.3 Canada), FCC Battery: UL 1973, RU and cRU, UN 38.3	
Standard warranty	5-Year UPS and batteries	

\*External battery cable adds 5" to the depth

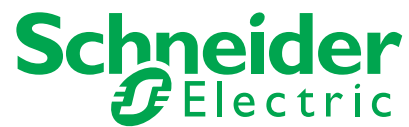
# Smart-UPS Ultra



## SKU technical specifications

SRTL5KRM2UT	
Topology	On-Line
<b>Output</b>	
Output power capacity	4900VA/4900W @ 208V 5000VA/5000W @ 240V
Nominal output voltage	208V, 240V
Output voltage distortion	(Full R Load) 1%
Output frequency	50/60Hz ± 3Hz (auto sense), 50/60Hz ± 0.1Hz user selectable 50/60Hz ± 3 Hz user selectable
Waveform type	Sine Wave
Output connections	DPCB 20A, L6-20R (2), L6-30R (2)
Efficiency green mode	98.4%
<b>Input</b>	
Nominal input voltage	208V, 240V
Input frequency	40 - 70Hz (±0.1Hz) auto-selecting
Input connections	L6-30P attached to UPS (10ft chord)
Input voltage range for main operations	187 ~ 275 V (±5V)
<b>Batteries and runtime</b>	
Battery type	Lithium-ion
Runtime (5000W/2500W)	5 min / 12 min
Runtime + 1 external battery (5000W/2500W)	17 min / 37min
External battery	SRTL180RM2UBP (up to 10 external)
<b>Communications and management</b>	
Interface port(s)	USB-A, Ethernet, Universal I/O, EPO
Network management	Network Management Card Embedded
Control panel	Auto-rotating, multicolor high resolution LCD with virtual touch keys
<b>Physical</b>	
Net HxWxD	86mm (3.4in) x 432mm (17in) x 768mm (30.25in)
Net weight	64.4lbs (29.2kg)
<b>Environmental</b>	
Operating environment	32 – 104 °F (0 – 40 °C)
Operating elevation	0-10000 feet (0-3000 meters)
Storage temperature	5 – 113 °F (-15 – 45 °C) short term storage
Storage relative humidity	0 – 95%, non-condensing
Storage elevation	0-50000 feet (0-15000 meters)
<b>Conformance</b>	
Regulatory approvals	UPS: UL (UL1778 for US), cUL (CSA 107.3 Canada), FCC Part 15 Subpart B Class A, ICES 003 Issue 6 RBC and External battery pack: RU, cRu, UN38.3, UL1973
Standard warranty	5-Year UPS and batteries

Life Is On



Learn more today!

[apc.com/smart-ups-ultra](http://apc.com/smart-ups-ultra)

**Schneider Electric**

One Boston Place  
Floor 27  
Boston, MA 02108  
United States  
[www.apc.com](http://www.apc.com)

