



Installation Instructions

Please Read Before Installing

ENGLISH

Overview

Color Change Kits allow for changing the color of an existing *RadioRA-SR*, *RadioRA*, or *HomeWorks* dimmer, switch, or fan speed control.

Important Notes

Environment: Ambient operating temperature: 32 °F to 104 °F (0 °C to 40 °C), 0-90% humidity, non-condensing. Indoor use only.

Wallplates: Do not paint controls, Color Change Kits, or wallplates.

Cleaning: To clean, wipe with a clean damp cloth. **DO NOT** use any chemical cleaning solutions.

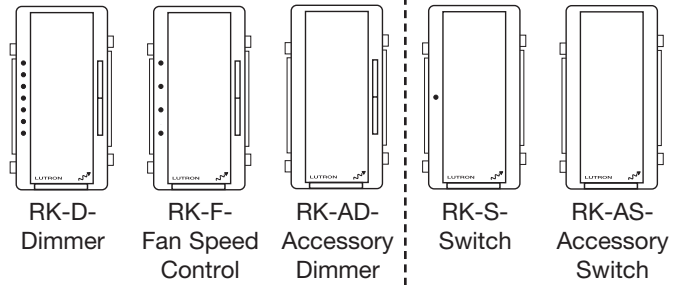
Models Supported: The Color Change Kits may **ONLY** be used with the *RadioRA-SR*, *RadioRA*, and *HomeWorks* model numbers listed in Table 1.

Warranty: For Warranty information, please see the enclosed Warranty, or visit www.lutron.com/resiinfo

Lutron® Color Change Kits

Compatible with *RadioRA-SR*, *RadioRA* and *HomeWorks*

RK-D-, RK-F-, RK-AD-, RK-S-, RK-AS-



| <i>RadioRA-SR</i> | <i>RadioRA</i> | <i>HomeWorks RF</i> | <i>HomeWorks Wired</i> | Color Change Kit |
|---------------------------|-----------------------|------------------------------------|------------------------------------|------------------|
| SRD-6D, SRD-10D, SRD-10ND | RA-6D, RA-6ND, RA-10D | HRD-6D, HRD-6ND, HRD-10D, HRD-10ND | HWD-6D, HWD-6ND, HWD-10D, HWD-10ND | RK-D |
| SRD-2ANF | — | HRD-2ANF | HWD-2ANF | RK-F |
| SD-RD | RA-AD | HD-RD | HD-RD | RK-AD |
| SRD-8ANS | RA-8ANS | HRD-8ANS | HWD-8ANS | RK-S |
| SD-RS | RA-AS | HD-RS | HD-RS | RK-AS |

Table 1

Installation

1. Turn power off at circuit breaker or remove fuse.

WARNING - To avoid the risk of electric shock, locate and lock supply breaker in the OFF position before proceeding. Failure to do so could result in death or serious injury.

2. Remove Wallplate and Adapter. See Figure 1.

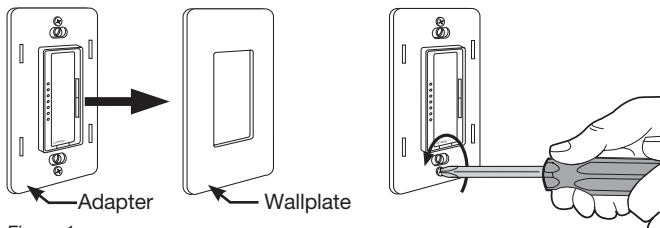


Figure 1

3. Remove existing Color Change Kit. Unclip the existing kit by pressing in on both top clips with thumb and forefinger. Repeat for bottom clips. Pull the kit straight out from the control, being careful not to dislodge the clear plastic frame underneath. See Figure 2.

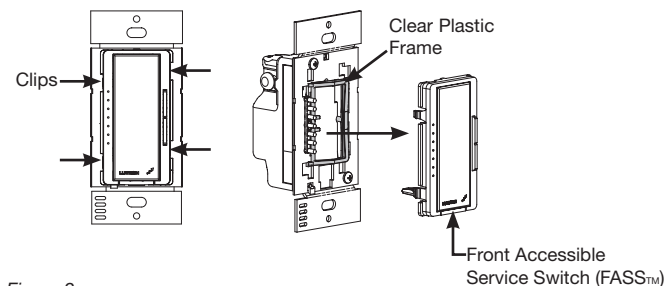


Figure 2

Note: If the clear plastic frame gets dislodged or lost, a spare frame is provided with the kit. Follow the instructions below:

- Holding the frame with the hook on the left, hook the frame into the hole next to the center LED pipe.
- Press firmly on the frame at the hook. When properly seated, the frame will snap into place. See Figure 3.

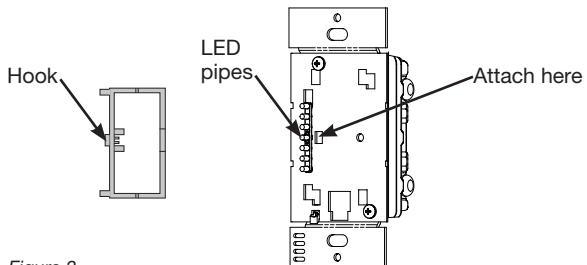


Figure 3

- Install new Color Change Kit. Push the kit straight onto the control, being careful not to dislodge the clear plastic frame underneath. Press firmly on each clip to lock into place. See Figure 2.
- Check control operation. If any of the buttons on the control feel stiff or do not operate, repeat steps 3 and 4.
- Install Adapter and Wallplate. See Figure 1.
- Turn power on at circuit breaker or replace fuse.
- Check *FASS* operation. Pull the *FASS* (see Figure 2) in and out several times and ensure that power is removed and restored to the load.