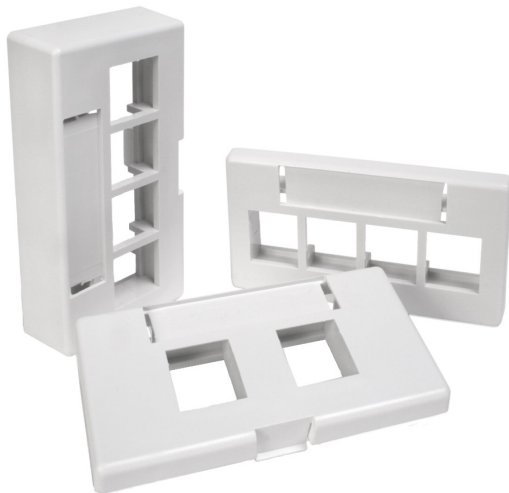


QUICKPORT™ Modular Furniture Faceplates

APPLICATION

Leviton QUICKPORT Modular Furniture Faceplates with ID windows feature a designation window for simple, organized workstation identification. The faceplates accept QUICKPORT snap-in connectors and adapters to support a variety of voice and data applications in office environments.



SPECIFICATION

Modular Furniture Faceplate — Standard

Modular furniture connector housing shall be a field-configurable faceplate providing from one to four flush-mount ports for a variety of snap-in connectors and adapters.

Modular Furniture Faceplate — Herman Miller

Modular furniture connector housing shall be a field-configurable flush-mount faceplate compatible with Herman Miller openings, and provide from one to four flush-mount ports for a variety of snap-in connectors and adapters.

Modular Furniture Faceplate — Extended Depth

Modular furniture connector housing shall be a field configurable faceplate extending 0.75 inch from the furniture raceway to facilitate fiber or copper cable bend-radius compliance, or to compensate for shallow raceway channels, and provide from one to four flush-mount ports for a variety of snap-in connectors and adapters.

All versions shall have a rattle-free fit and a single tool free release latch; be constructed of high-impact self-extinguishing plastic rated UL 94V-0; and be cULus Listed, and compliant with ANSI/TIA 568 specifications.

FEATURES

- Faceplates accept Leviton QUICKPORT snap-in connectors
- Provides for work area telephone and data patching
- Compact design
- Meets ANSI/TIA 568 bend-radius requirements
- ID label and window kit included

DESIGN CONSIDERATIONS

- Specify 49910-Sxx (standard) or 49910-Hxx (Herman Miller) versions (dependent on furniture type)*
- Specify 49910-Exx (same opening size as 49910-Sxx) for installation into shallow raceway channels (plate has 0.5-inch added depth)
- Specify port identification method (colored connectors, adapters, and designation labels available)
- Configure 1, 2, 3, or 4 active ports; spare ports can be filled with blanks for later use

* xx = various configurations and colors, see page two.

STANDARDS & REGULATIONS

- cULus Listed (UL 1863 & CAN/CSA-C22.2 No. 182.4)
- ANSI/TIA 568

MECHANICAL SPECIFICATIONS

Dimensions: See page two

Materials: UL 94V-0 Rated Thermoplastic

COUNTRY OF ORIGIN

Mexico

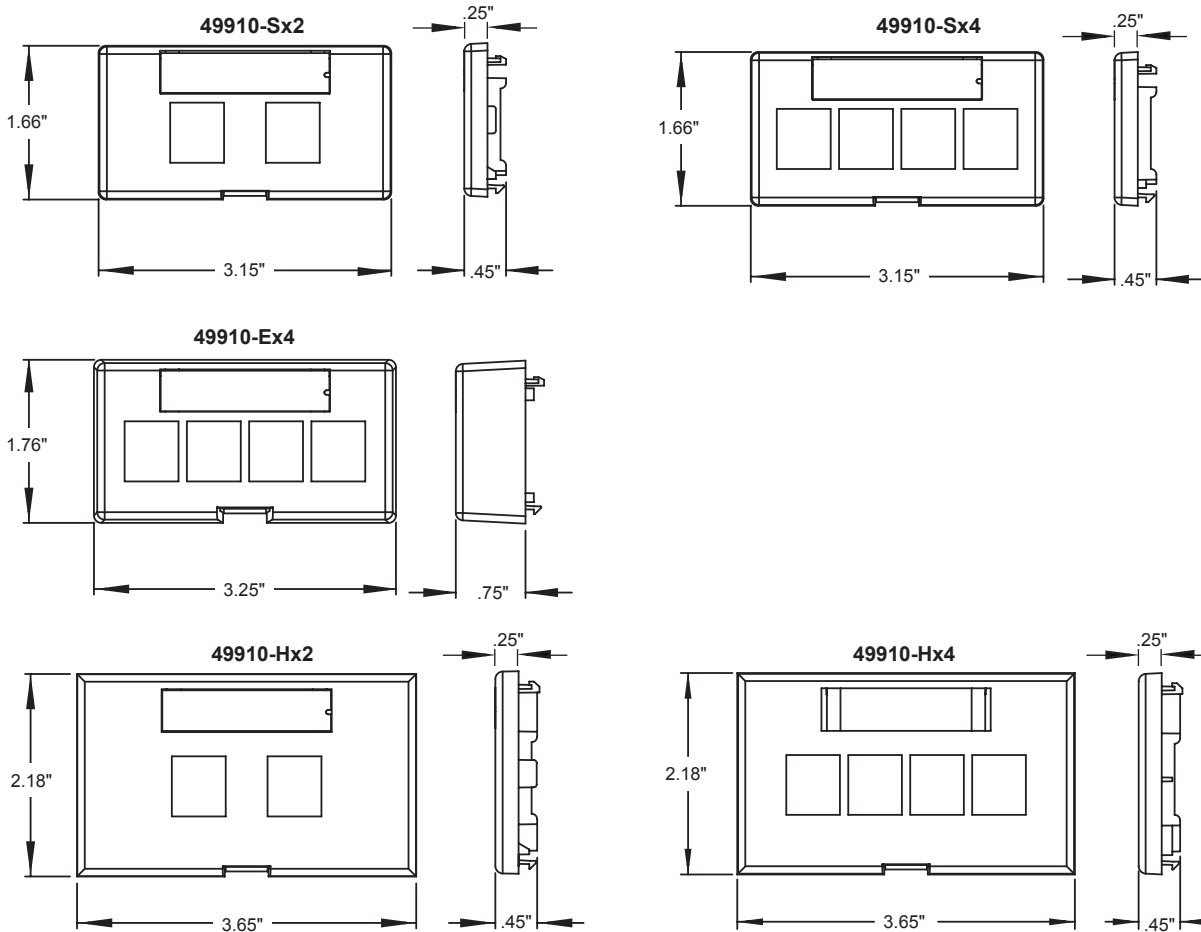
WARRANTY INFORMATION

For Leviton product warranties, go to leviton.com/ns/warranty

49910-Sxx, 49910-Exx, 49910-Hxx

PRODUCT SPECIFICATIONS

49910-Sxx, 49910-Exx, 49910-Hxx



PART NUMBERS

Description	White	Ivory	Gray	Black
QUICKPORT™ Modular Furniture Faceplate, 2 ports	49910-SW2	49910-SI2	49910-SG2	49910-SE2
QUICKPORT Modular Furniture Faceplate, 4 ports*	49910-SW4	49910-SI4	49910-SG4	49910-SE4
QUICKPORT Modular Furniture Faceplate, 4 port, extended depth*	49910-EW4	49910-EI4	49910-EG4	49910-EE4
QUICKPORT Modular Furniture Faceplate, 2 ports, Herman Miller*	49910-HW2	49910-HI2	49910-HG2	49910-HE2
QUICKPORT Modular Furniture Faceplate, 4 ports, Herman Miller*	49910-HW4	49910-HI4	49910-HG4	49910-HE4

Standard and Extended Depth Modular Furniture Faceplates fit openings of approximately 1.38" x 2.68".

4-port extended depth faceplate provides 0.5-inch added depth (0.75 inch total).

Herman Miller faceplates fit openings of approximately 1.88" x 2.98".

Standard and extended depth faceplates are compatible with Herman Miller Furniture when used with Herman Miller G1189A Reducer available from Herman Miller dealers.

ID label and window kit included.

*Includes one QUICKPORT blank insert.

For further support information, visit leviton.com/ns/support