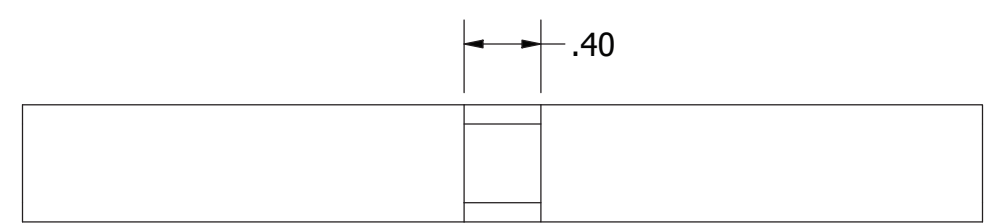
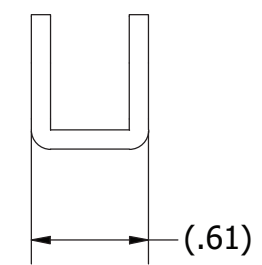
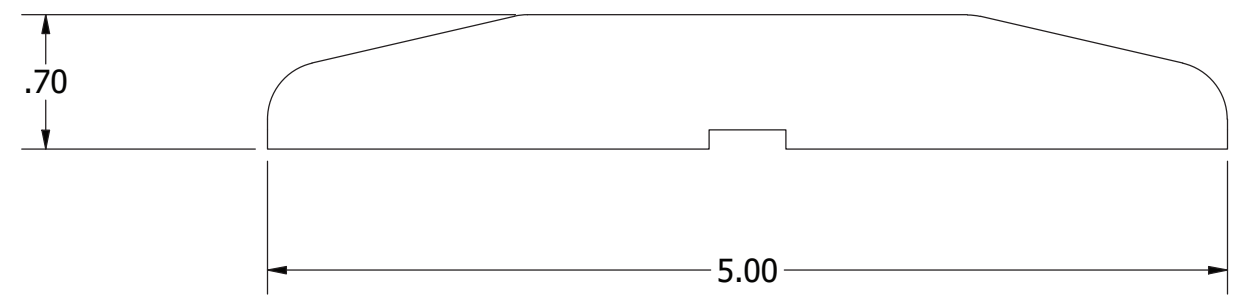


*KIT INCLUDES ALL ITEMS SPECIFIED IN PARTS TABLE
 *ALL ITEMS ARE TO BE BAGGED TOGETHER



KIT PARTS LIST			
ITEM	QTY	PART NUMBER	DESCRIPTION
1	4	PF 610-BSK REV-B	BUTT SPLICE PLATE FOR CABLE RUNWAY
2	2	CM-CB-312-18-2.00-ZI-MOD	CARRIAGE BOLT, 5/16" X 18 X 2.00 LONG, ZINC PLATED MODIFIED
3	2	CM-HN-312-18-ZI	5/16-18 HEX NUT, ZINC PLATED
4	2	CM LW-516-ZI	LOCK WASHER, 5/16", ZINC PLATED

EST. WEIGHT :
96.92 lbmass



INTERPRET DRAWING PER ASME Y14.5M-1994
 DIMENSIONAL LIMITS APPLY
 AFTER APPLICATION OF FINISH
 DRAWING NOT TO SCALE
 TOLERANCE UNLESS OTHERWISE NOTED:
 ANGULAR +/- 1
 .XXXX +/- .010
 .XXX +/- .015
 .XX +/- .030
 .X FOR REF. ONLY
 UNLESS OTHERWISE SPECIFIED
 ALL DIMENSIONS ARE IN INCHES

NOTICE:
 Use of this document is subject to a confidentiality and nondisclosure agreement with Great Lakes Data Racks & Cabinets and may not be reproduced, disclosed or utilized in whole or in part without prior written authorization from Great Lakes Data Racks & Cabinets.

PART NUMBER:
GL-CR-BSK
 QTY PER UNIT: 1
 MATERIAL TYPE:
 MATERIAL GAUGE:
 FINISH:
 DRAWN DATE
 MKTG DATE
 CHECKED & APP. DATE

TITLE
BUTT SPLICE KIT
 GREAT LAKES DATA RACKS & CABINETS
 P.O. BOX 551 EDINBORO, PA 16412
 PHONE (814) 734-7303 FAX (814) 734-3907
 E-MAIL info@greatcabinets.com
 DWG NO:
 REV: -
 SHEET: 1 of 1