



The SS-820 Bi-Directional Amplifier

Add Sound to Your Security System

Product Overview

The SS-820 is a class D 40W max amplifier that supports 2 way audio in security systems.

Designed to integrate with IP cameras and DVRs, the SS-820 will drive an 8 ohm speaker or horn and amplify a non-powered microphone. It is compatible with most security technologies used today.

Commonly Used In

The SS-820 is commonly paired with 8 Ohm speakers and horns for use in:

- Perimeter Protection
- Car Dealerships
- Parking Lots
- Safe Cities

In these applications, audio is frequently used for announcements, verbal warnings, and emergency alerts.



The SS-820 Bi-Directional Amplifier is proudly Made in the USA.

At A Glance

Product

- Class D 40W Max Amplifier
- Pair with 8 Ohm Speakers
- Supports 2 Way Audio
- IP68 Enclosure

Uses

- Perimeter Protection
- Car Dealerships
- Parking Lots
- Safe Cities

Technical Specifications

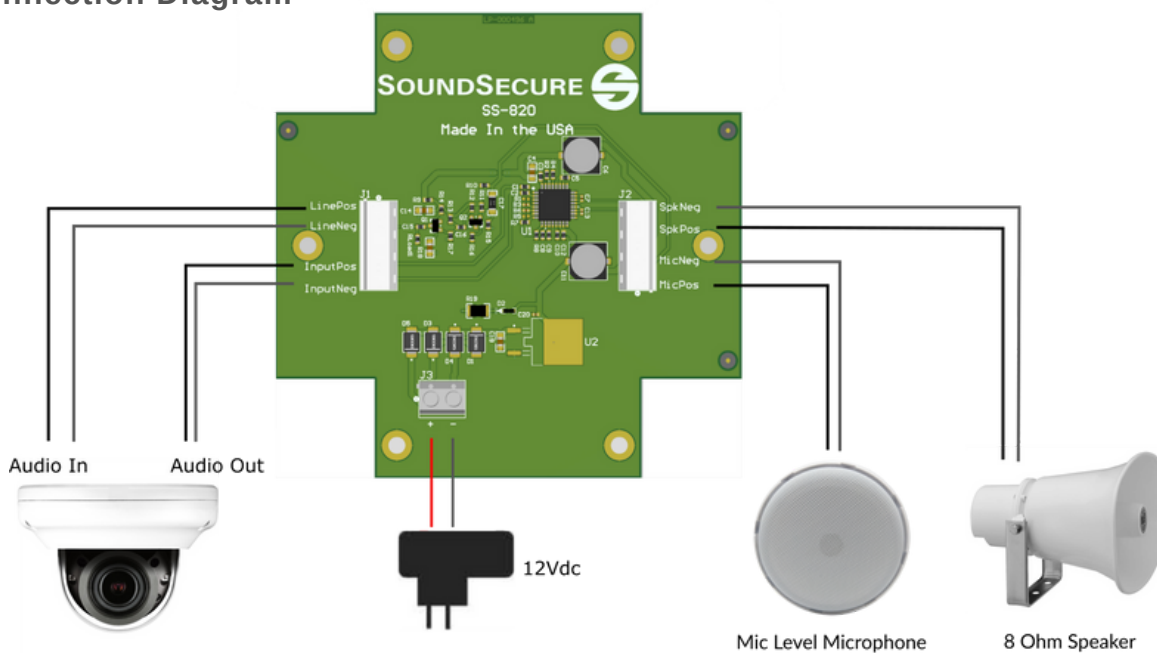
| | |
|----------------------|--------------------------|
| Supply Voltage | 10-26Vdc 12V Recommended |
| Current Drain | 4A Max |
| Output Power | 40W Max |
| Output Impedance | 8 Ω |
| SNR | 102 dB |
| Efficiency | 92% |
| Operating Temp | -40° - 85° C |
| Mic Output | 0dB±3, Line Level |
| Mic Impedance | 2.2 kΩ |
| Environmental Rating | IP 68 |
| Dimensions | 4.75"L x 4.75"W x 2.75"H |
| Weight | 1 lb |
| Enclosure Material | Polycarbonate |

The SS-820 Bi-Directional Amplifier

Installation Diagrams

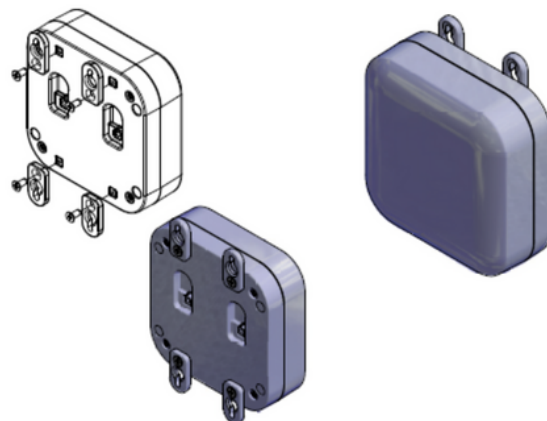


Connection Diagram



Enclosure Mounting

1. Install mounting feet to enclosure using supplied screws.
2. Mount enclosure to surface or object. #8 pan head screws are recommended (not included).



The SS-820 Bi-Directional Amplifier

Installation Instructions



To Connect the SS-820 to an IP Camera:

- 1) Using 18/2 AWG shielded cable, connect the camera's audio out to the SS-820 Input Positive and Input Negative terminals. Connect the signal wire to positive and the ground wire to negative. If using a non-powered microphone for 2 way audio, connect the camera's audio in to the SS-820 Line Positive and Line Negative terminals.
- 2) Connect a compatible 8 Ohm speaker or horn to the SS-820 terminals marked Speaker Positive and Speaker Negative. Connect the signal wire to positive and the ground wire to negative. If using a non-powered microphone, connect the microphone signal wire to "Mic Pos" and the ground wire to "Mic Neg."
- 3) Connect 12Vdc power to the power input terminal marked "+" and "-". A green LED will illuminate upon connection to power.
- 4) Configure the audio settings in your IP camera to enable audio.