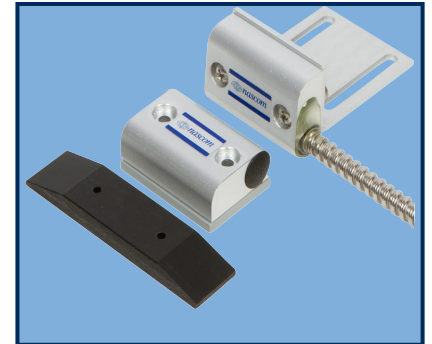


## DESCRIPTION

Nascom's N505ASCD is a short, 2" block switch with an L bracket, designed for rollup or curtain doors. It combines the installers' choice of contact configuration with an N35 NdFeB magnet for maximum gap performance.

The N505ASCD prevents false alarms caused by warping or shifting of doors, and features our unique NO DEAD SPOT™ technology.



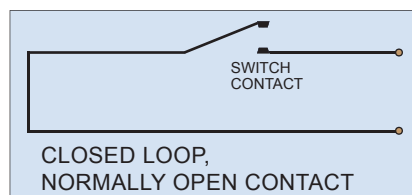
## FEATURES

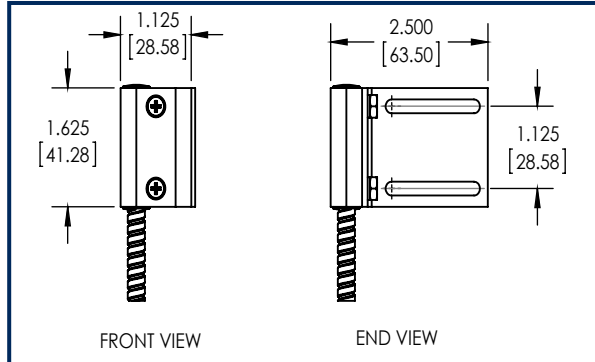
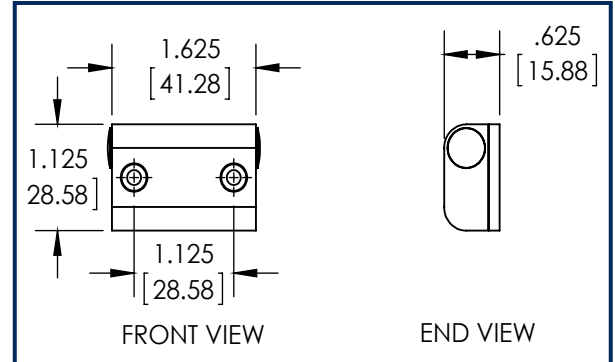
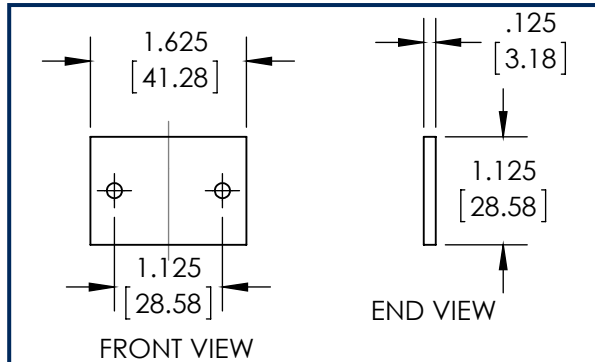
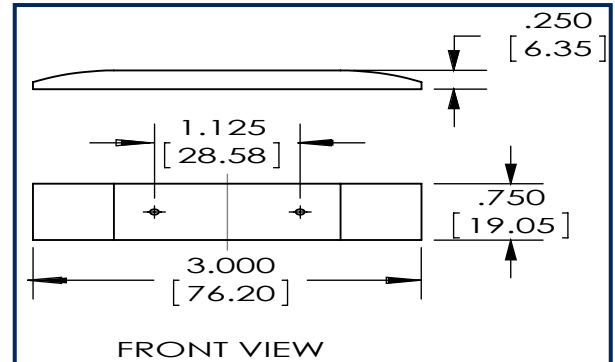
- NO DEAD SPOT™ TECHNOLOGY
- EXTRA WIDE GAP - N35 NdFeB RARE EARTH MAGNET
- PROTECTIVE WEAR PAD
- LISTED TO UL634 STANDARD
- 24" ARMORED CABLE LEAD PROTECTION
- 36" 22AWG WIRE LEADS
- EXTRUDED ANODIZED (TYPE II) ALUMINUM

## ORDERING INFORMATION

PART NUMBER	COLOR	OPERATE GAP (in INCHES)	CONTACT RATING (Max DC/Peak AC Resistive)				STATIC CONTACT RESISTANCE (50mV, 100mA)
			SWITCHING		CARRY		
			V	I	V	I	
<b>CLOSED LOOP, NORMALLY OPEN, 1FA, SWITCH/MAGNET SET:</b>							
N505ASCD/ST	SILVER	1.50 to 2.50	200 VDC	0.5 Amps	10vA	1.5 Amps	150 mOhms
<b>DUAL CLOSED LOOP, NORMALLY OPEN, 1FA, SWITCH/MAGNET SET:</b>							
N505ASCD/ST2CR	SILVER	1.50 to 2.50	200 VDC	0.5 Amps	10vA	0.5 Amps	150 mOhms

## WIRING SCHEMATIC



**DIMENSIONS - IN [mm]**

**SWITCH**

**MAGNET**

**SPACER**

**WEAR PAD**
**INSTALLATION INSTRUCTIONS**

- Lower the door to closed position. Make sure there are no obstructions to prevent complete closure of door.
- Position magnet at the desired height on door with the end of magnet housing aligned with inside edge of the door track. Mark the position of magnet.
- Clean the area on door where magnet is to be mounted with alcohol.
- Remove the liner from the mounting tape on rear surface of magnet. Position the magnet where previously marked and press the magnet onto door.
- Align the switch bracket assembly on the track with the magnet on door. The top edge of the magnet should align with the midpoint on the switch housing. Make sure the back of switch housing is seated against the edge of the track.
- Using the slots in the bracket as a guide, drill two 5/32" holes in the track as close to the switch as possible.
- Position the wear pad on the inside of the track and align the holes in the wear pad with the holes you just drilled.
- Insert two #6X 5/8" screws thru the slots in the bracket and thru the holes drilled in track and into the holes in the wear pad. Tighten screws carefully until assembly is snug on the track. Do not over tighten the screws.
- Use two #6X3/4" screws to mount the magnet if desired.
- Open the door to its fully open position to make sure the magnet will clear the door stop at the top of the door and to make sure the Angle plate at the bottom of the door will clear the switch assembly. It may be necessary to notch the angle plate at the bottom of the door to allow clearance for the door to move freely past the switch assembly.
- Connect the switch leads to an ohm meter and open and close the door to test switch for correct operation.
- Connect the switch leads to the alarm system.

## PART NUMBER SYSTEM

N505ASCD / ST XXX XXXX X XX XXXX XXXX

### CIRCUIT (0, 2 or 3 digits):

- Blank = CLOSED LOOP
- 2CR = DUAL CLOSED LOOP

### LEAD LENGTH (zero, 3 or 4 digits):

- Blank - 24 Inches
- All other lengths specified in Inches with 3 digits (e.g. 036 = 36 Inches)
- \* lead length is armored cable length- wire length is 12 inches greater than armored cable length

### WIRE TYPE (0 or 1 digit):

- Blank = UL1061 | 22AWG | 7/30
- J = 2-conductor PVC Jacketed NEC Type CL2 and CM

### END OF LINE RESISTOR (zero to 4 digits):

- Blank = Resistor in series with the switch
- P = Resistor in parallel with the switch
- SP = Resistor 1 in series to the switch; resistor 2 in parallel to the switch

### BUILT-IN END OF LINE RESISTOR VALUE (zero to 4 digits):

- Blank = No built-in end of line resistor
- All other resistor values are specified (e.g. 1K = 1,000 Ω)

### LEAD WIRE COLOR (zero to 2 digits):

- Blank = Switch Color except:
  - » resistor contacts standard is red wire
  - » all 2 conductor jacketed wire is grey
- BL = Blue leads
- OL = Orange leads