



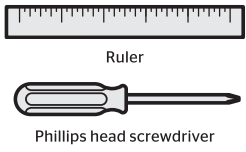
aura

BLUETOOTH KEYPAD SMART LOCK

Installation and User Guide

ENGLISH

Required tools



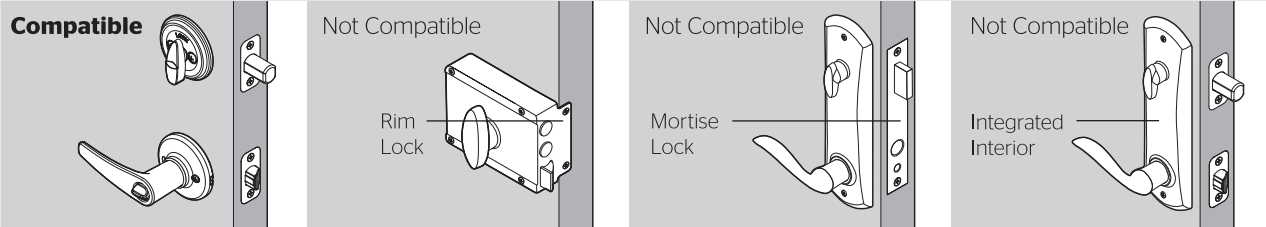
Kwikset
1-800-327-5625
www.kwikset.com

Parts List			
Mounting Plate 	Adapter Ring 	Exterior Assembly 	Interior Assembly
Batteries 	Keys 		
Latch A 	For Latch / Strike Strike 03809 	For Lock SmartKey Tool 	69316
Latch B <small>"B" is not included. If needed, please contact Kwikset to order a drive-in latch for your lock.</small>	46780 	48654 	68611

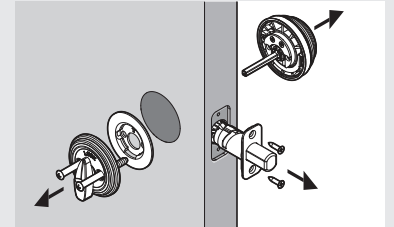
1 Prepare the door and check dimensions

If drilling a new door, use the supplied template and the complete door drilling instructions available at kwikset.com/doorprep

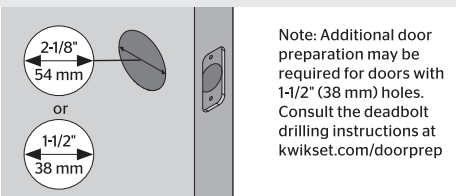
A Make sure your door is compatible. If you have a standard deadbolt mounted separately from the handle below it, your door is compatible.



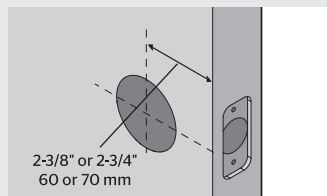
B Remove your existing deadbolt from your door.



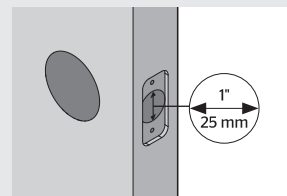
C Measure to confirm that the hole in the door is either 2-1/8" (54 mm) or 1-1/2" (38 mm).



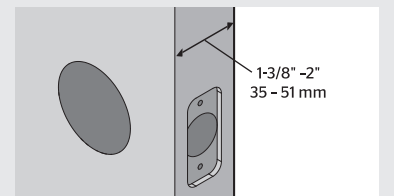
D Measure to confirm that the backset is either 2-3/8" or 2-3/4" (60 or 70 mm).



E Measure to confirm that the hole in the door edge is 1" (25 mm).

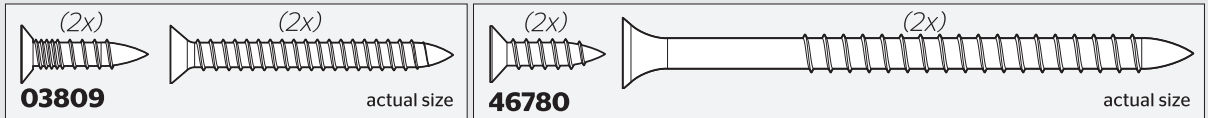


F Measure to confirm that the door is between 1-3/8" and 2" (35 mm and 51 mm) thick.

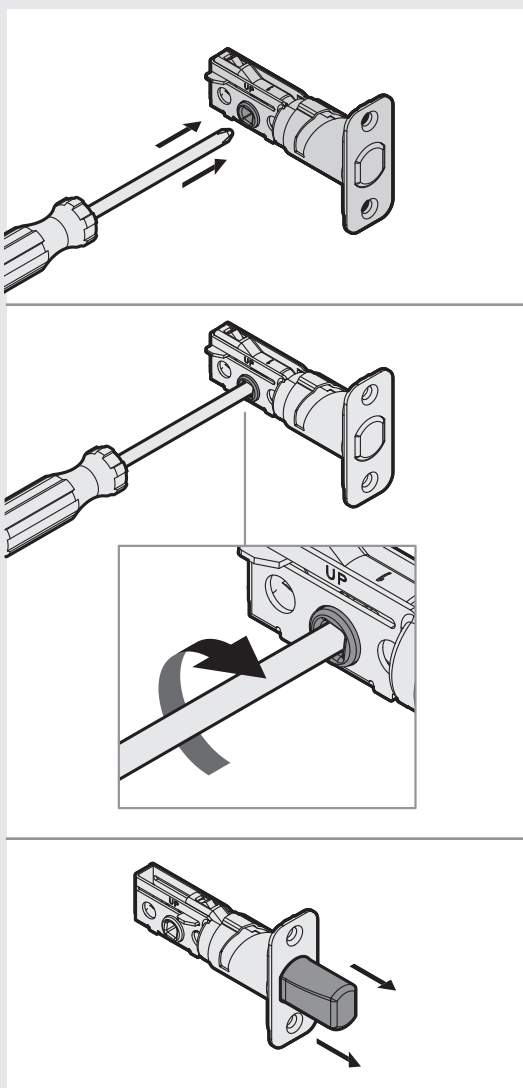


2 Install the latch and strike

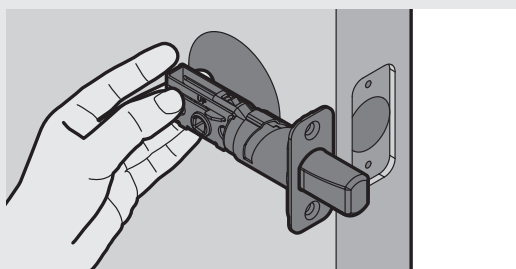
For Latch / Strike Bag



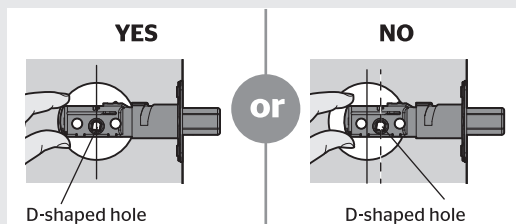
A Extend the latch bolt.



B Hold the latch in front of the door hole, with the latch face flush against the door edge.

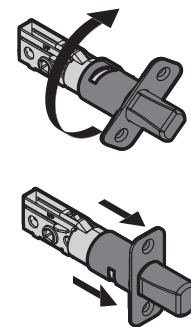


C Is the D-shaped hole centered in the door hole?

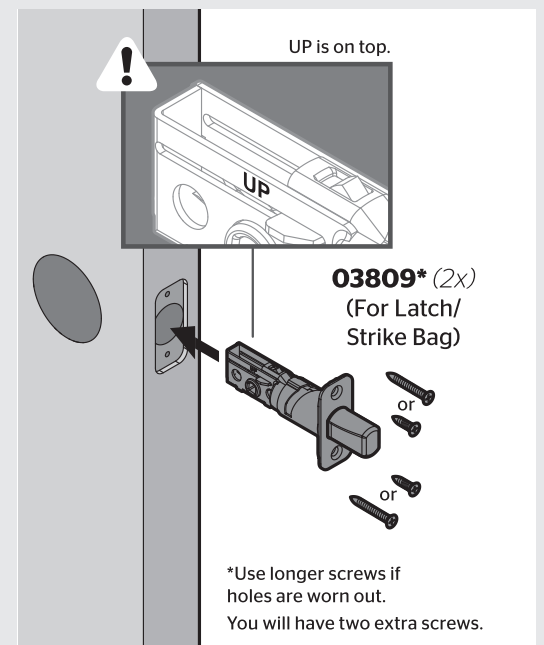


No adjustment is required. Proceed to next step.

Rotate latch face as shown to extend latch.

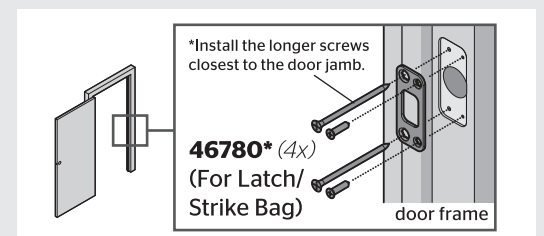


D Install the latch.



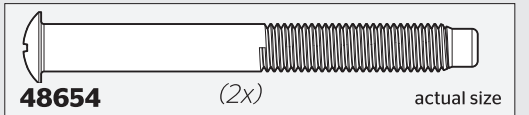
E Install the strike on the door frame.

⚠ Make sure the hole in the door frame is drilled a minimum of 1" (25 mm) deep.

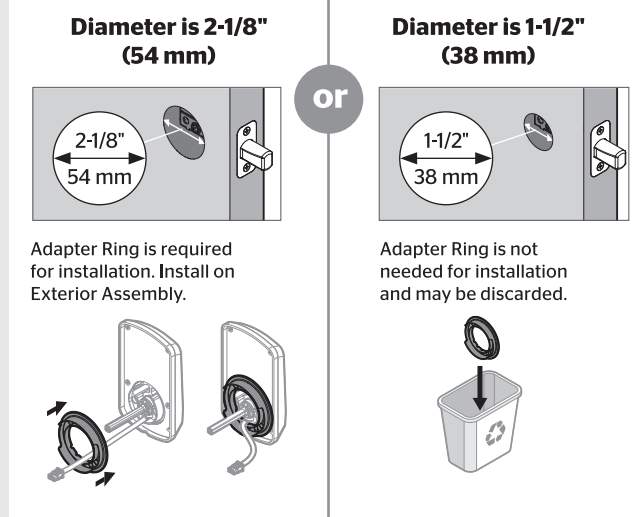


3 Install the exterior keypad

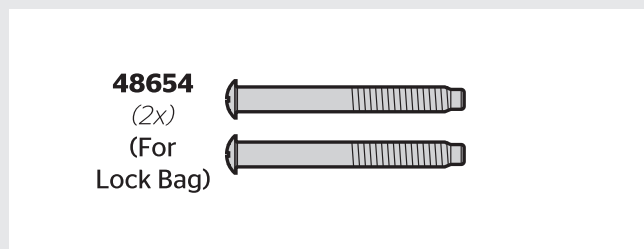
For Lock Bag



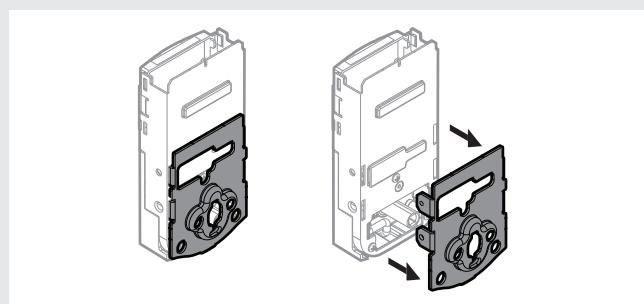
A What is the diameter of the hole in the door?



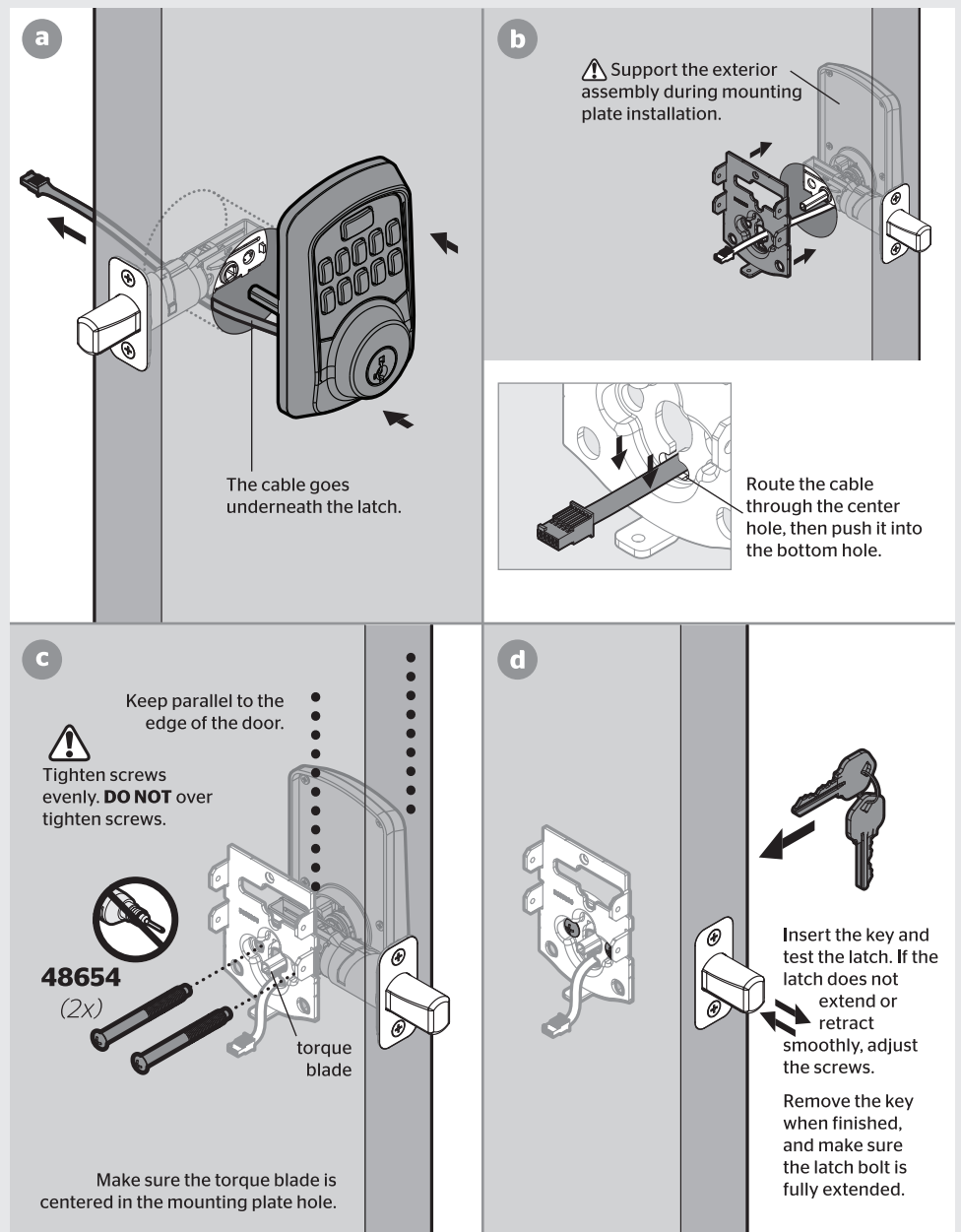
B Locate the screws for step 3D and keep them within reach.



C Remove the mounting plate from the interior assembly.



D Install the exterior keypad and mounting plate.

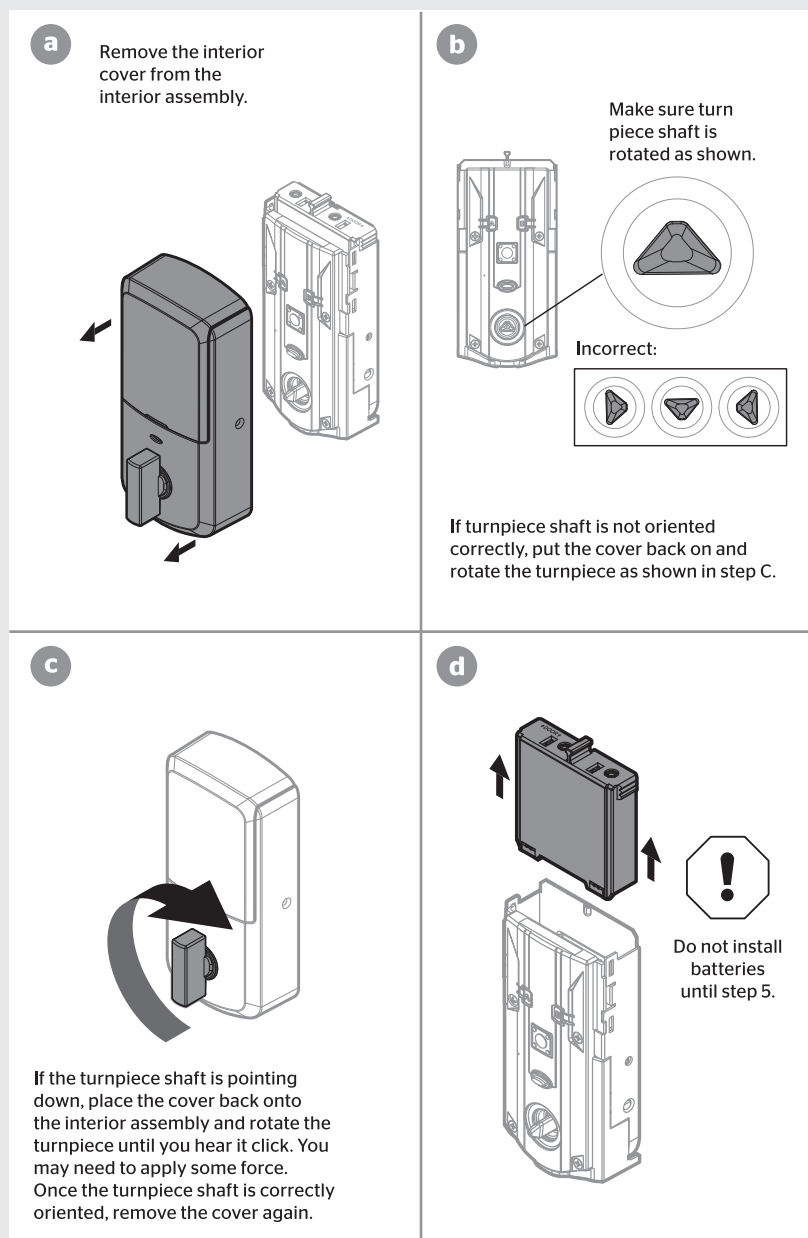


4 Install the interior assembly

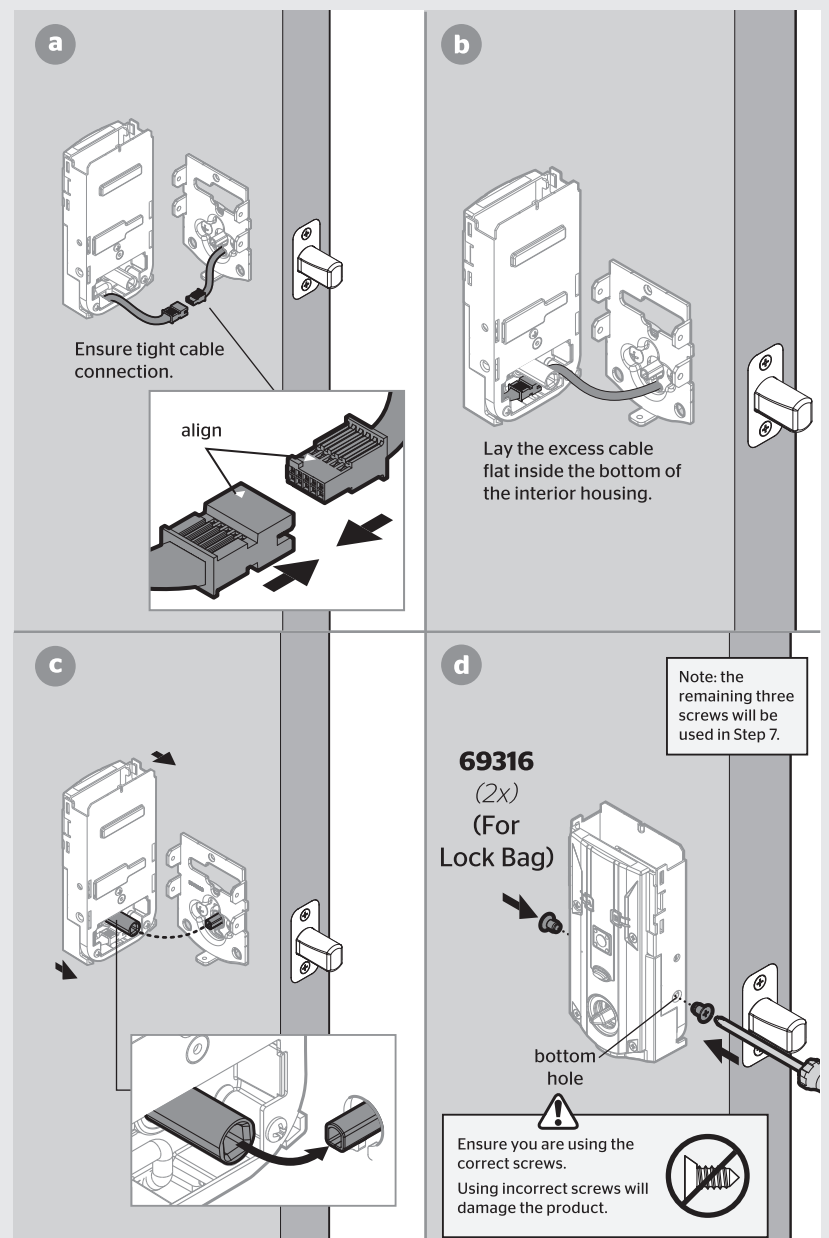
For Lock Bag



A Ensure the turnpiece shaft is pointing up, and remove the interior cover and battery pack from the interior assembly.



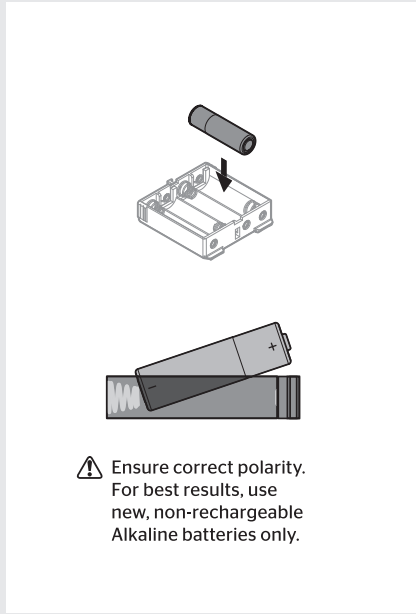
B Install the interior assembly onto the mounting plate.



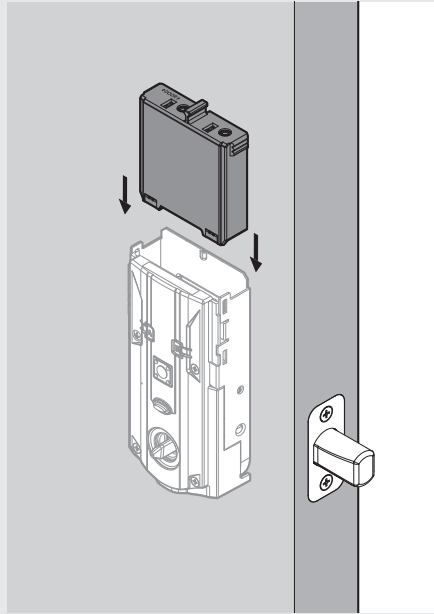
5 Install the batteries and perform the door handing process

This step will teach your lock the orientation of your door and is crucial to lock operation.

A Install 4 AA batteries in the battery pack.

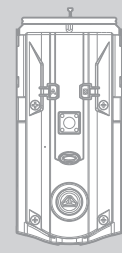


B With the door open, install the battery pack to initiate auto-handing.



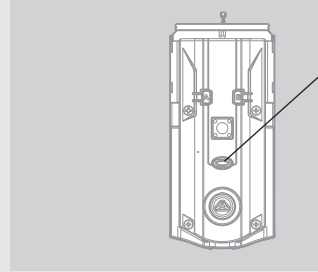
C The latch will retract and extend to learn the orientation of the door.

If the bolt does not move, make sure the batteries are correctly installed, and perform step 5B again.



Note: The latch bolt will only retract **half way**.

D The Status LED will indicate success or failure.



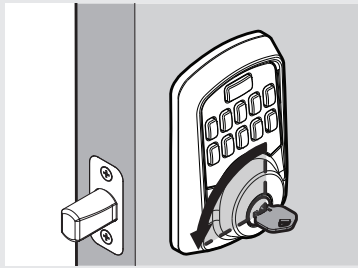
Green: Door handing was successful. Proceed to next step.

Red: Door handing was unsuccessful. Make sure the lock interior and batteries are correctly installed. Perform step 5B again.

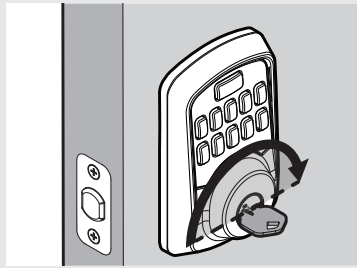
If the door handing process is still unsuccessful after a second attempt, see the Manual Door Handing section on page 4.

6 Test the lock and check door alignment

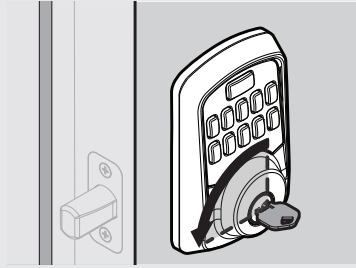
A With the door open, insert the key to extend the latch. Ensure that the latch extends smoothly.



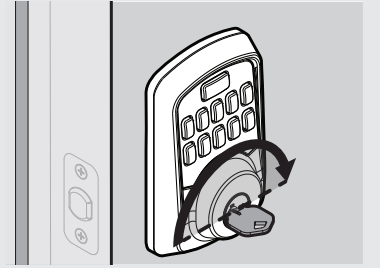
B Turn the key 180° to retract the latch. Ensure that the latch retracts smoothly.



C Close the door. Insert and rotate the key to lock the door. Ensure that the door locks smoothly.



D Turn the key 180° to retract the latch. Ensure that the door unlocks smoothly.



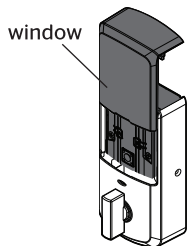
If your door does not lock and unlock smoothly, make sure you replaced your previous latch and strike with those supplied in the box. If you still experience locking errors, complete the troubleshooting steps at www.kwikset.com/aura/support
Kwikset Support: 1-800-327-5625



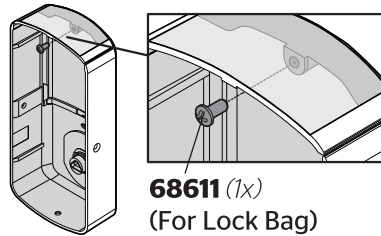
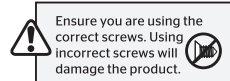
7 Install the interior cover

Important Information about the interior cover

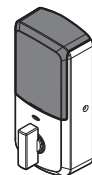
The window on the interior cover is unlocked by default for easier access to the battery pack and buttons.



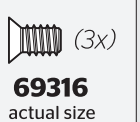
For additional security, you may choose to lock the window by installing the security screw.



When the window is locked, you will need to remove the entire interior cover and screws to access the battery pack and buttons.



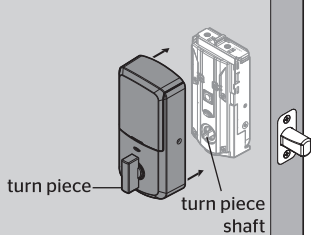
For Lock Bag



Cover Installation

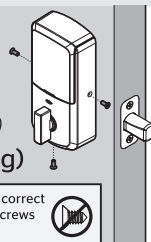
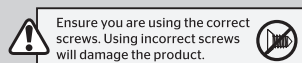
a Install cover.

Note: You may need to rotate the turn piece to align with the turn piece shaft.



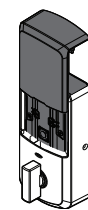
b Install screws.

69316 (3x)
(For Lock Bag)

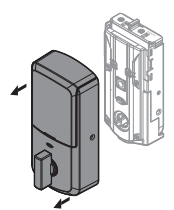


Battery Pack Access

If the window is unlocked, slide up the window to access the battery pack.



If the window is locked, remove the interior cover and screws to access the battery pack.



8 Download the app and create an account



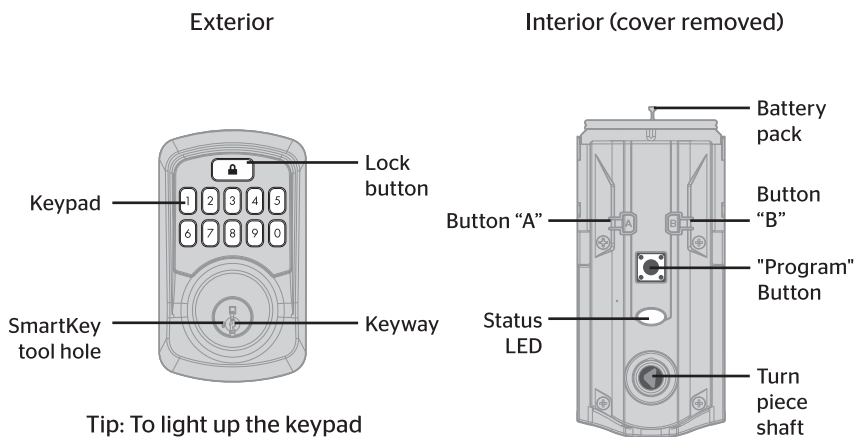
The Kwikset app is needed to use this lock. If this lock was professionally installed (or installed by someone other than the homeowner), make sure this step is performed by the homeowner.

A Download the Kwikset app by scanning the QR code or visiting www.kwikset.com/app on your smartphone.



B Create your account and follow the setup instructions in the Kwikset app.

Aura at a Glance



Tip: To light up the keypad while the door is locked, press the Lock button before entering your user code. The keypad will not light up if the door is unlocked.

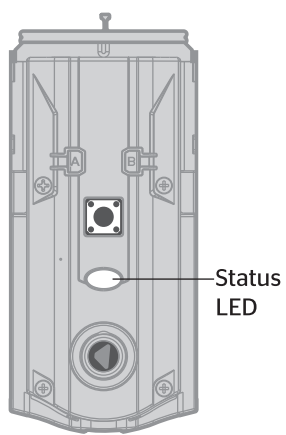
System Alerts

Alert	Reason	Solution
Keypad flashes red once with one beep*	One incorrect code entered.	Re-enter code.
Keypad flashes red three times with three beeps*	No user code programmed.	Program at least one user code.
Keypad flashes red 15 times with 15 beeps*	Three incorrect codes entered.	Re-enter code after 60 second keypad lockout.
Keypad flashes red with fast beeping sound for three to four seconds.	Low battery.	Replace batteries.
Keypad flashes red with continuous beeping sound for two seconds.	Door jammed while attempting to lock.	Manually re-lock door. If needed, reposition strike.
Lock beeps continuously.	Interior assembly is disconnected from exterior.	Remove battery pack, reconnect the interior to the exterior, then reinstall battery pack.

*Beeping sounds will only be heard if Lock Sounds have not been disabled in the app.

Status LED colors

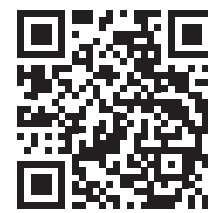
These features can be adjusted in some smart home apps.



Color	Lock Status
Green (solid)	Action successful
Green (blinking)	Unlocked
Red (solid)	Door handing process unsuccessful
Red (blinking)	Action unsuccessful or incomplete Low battery
Blue (solid)	Bluetooth Pairing successful
Blue (blinking)	Bluetooth Pairing Mode
Amber (solid)	Entering Network Reset mode
Amber (blinking)	Network or System Reset mode. Action required.
	Locked

Troubleshooting

A complete Aura Bluetooth Keypad Programming and Troubleshooting Guide is available at www.kwikset.com/aura/support



Manual Door Handing

If needed, the door handing process can be initiated manually. This is useful if the lock is being moved to a different door.

<p>1 Remove battery pack.</p>	<p>2 Press and HOLD the "Program" button while reinserting the battery pack. Release the "Program" button after 3 seconds. The status LED will flash red and green.</p>
<p>3 Press the "Program" button once more.</p>	<p>4 The latch bolt will extend and retract to learn the orientation of the door. The LED will flash green if handing is successful or red if handing is unsuccessful.</p>

Factory Reset

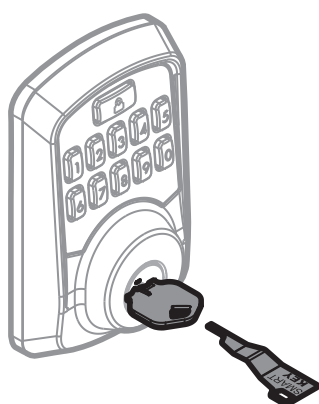
Factory Reset will delete all Bluetooth pairings, user associations, remove the lock from the account and reset all lock settings including handing.

<p>1 Remove battery pack.</p>	<p>2 Press and HOLD the "Program" button while reinserting the battery pack. Keep holding the button for 30 seconds until the lock beeps and the status LED flashes red.</p>
<p>3 Press the "Program" button once more. The LED will flash green and red, and the auto-handing process will begin.</p>	<p>4 The latch will retract and extend to learn the orientation of the door. The LED will flash green if auto-handing is successful or red if auto-handing is unsuccessful.</p>

SmartKey Re-Keying

Re-key the lock to work with your existing key. See the supplied SmartKey Re-key instructions for more information.

Note: If Auto-Lock is enabled, remove the battery pack before re-keying your lock.



Important Safeguards

1. Read all instructions in their entirety.
2. Familiarize yourself with all warning and caution statements.
3. Remind all family members of safety precautions.
4. Protect your user codes.
5. Dispose of used batteries according to local laws and regulations.

⚠ WARNING: This Manufacturer advises that no lock can provide complete security by itself. This lock may be defeated by forcible or technical means, or evaded by entry elsewhere on the property. No lock can substitute for caution, awareness of your environment, and common sense. Builder's hardware is available in multiple performance grades to suit the application. In order to enhance security and reduce risk, you should consult a qualified locksmith or other security professional.