

The Quick Clean cleaners let you quickly clean the endfaces of these types of fiber optic connectors:

- Quick Clean 1.25 mm: Cleans 1.25 mm LC and MU connectors
- Quick Clean 2.5 mm: Cleans 2.5 mm SC, ST, FC, and E200 connectors
- Quick Clean MPO 12/24 or 16/32: Cleans 12/24 or 16/32 MPO and MTP® connectors

## To See Other Languages

This instruction sheet is available in other languages on the Fluke Networks website.

## Safety Information

### **Warning**

To prevent possible damage to your eyes caused by hazardous radiation:

- Do not look directly into optical connectors. Some optical equipment emits invisible radiation that can cause permanent damage to your eyes.
- Before you clean an endface, turn off any optical sources (laser or LED) that are connected to the fiber.

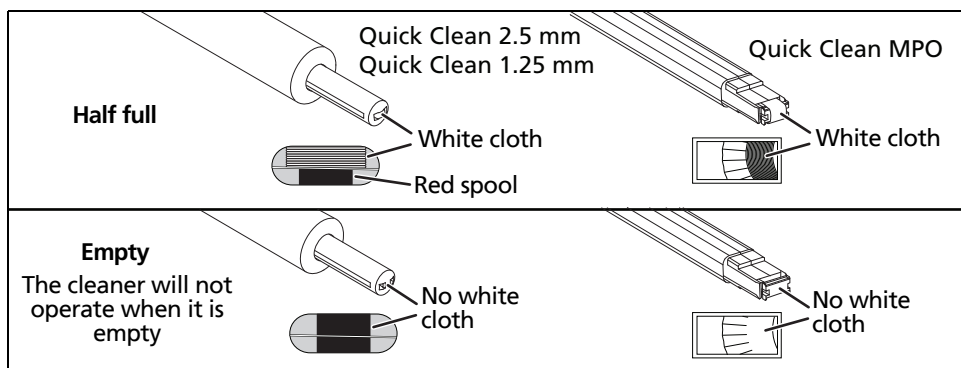
### **Caution**

To prevent damage to the cleaner and to fiber optic connectors:

- Use the cleaner to clean only the correct type of connector. If you use the cleaner on the incorrect type of connector, you can cause damage to the cleaner and the connector.
- Keep the guide cap on the cleaner with the cover closed when you do not use the cleaner. Keep the guide cap clean.
- Do not touch the tip of the cleaner. Do not pull the cloth away from the tip of the cleaner.



- Do not use the cleaner when the spool is empty. See Figure 1.
- When you do not use the cleaner for long periods, keep it away from direct sunlight, high temperatures, and high humidity.



GQZ04.EPS

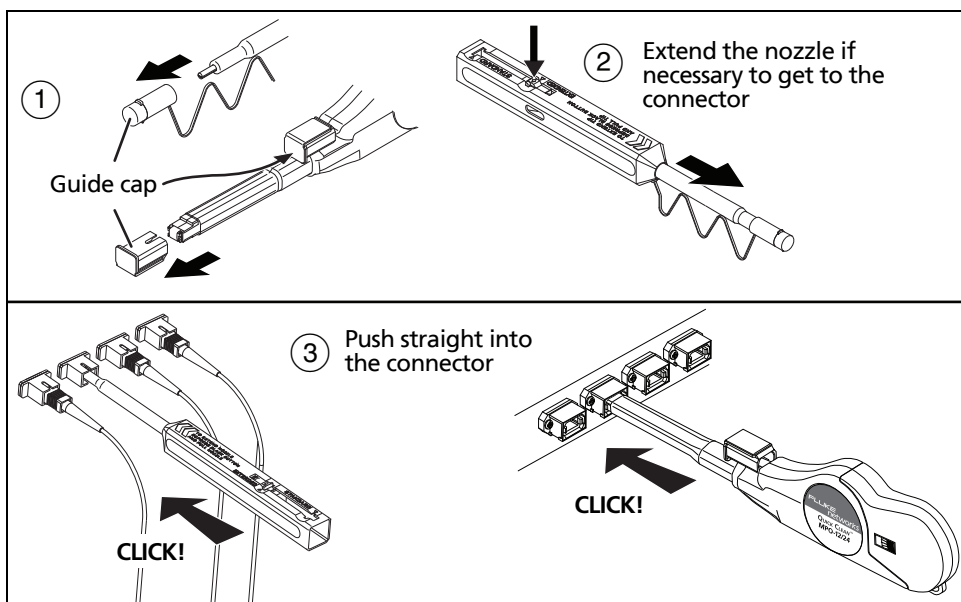
Figure 1. Window that Shows How Much Cloth is in the Cleaner

## How to Use the Cleaner

To clean endfaces in adapters, see Figure 2. To clean endfaces on plugs, see Figure 3.

### Note

*Do not use too much force when you push the cleaner. If you cannot easily push the cleaner into the connector, make sure that the cleaner is not empty and there is no unwanted material in the connector.*



GQZ01.EPS

Figure 2. How to Clean Endfaces in Adapters

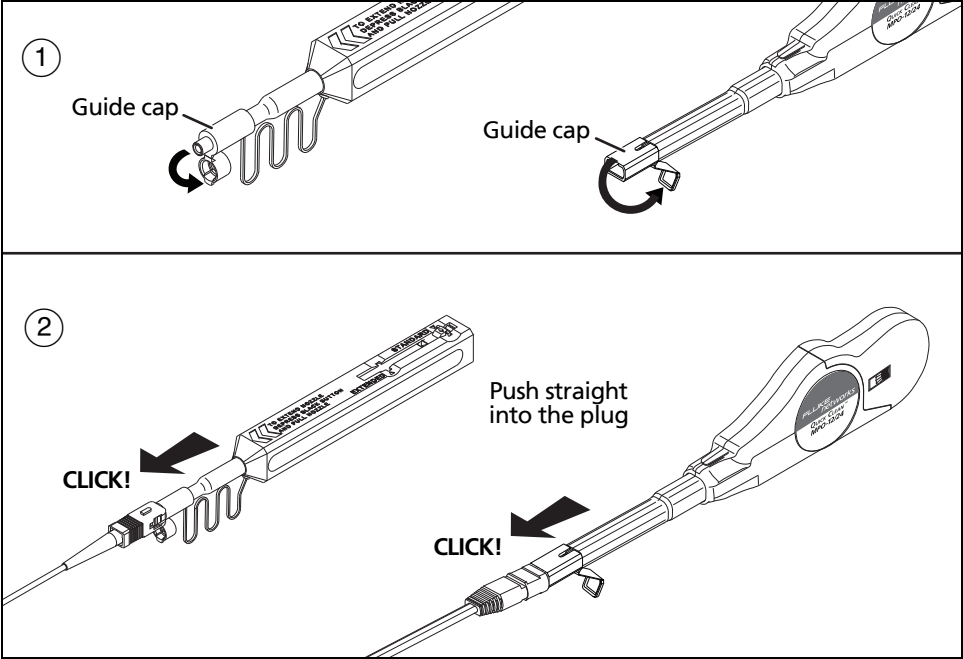


Figure 3. How to Clean Endfaces on Plugs

## Models of Cleaners

To purchase cleaners, contact an authorized Fluke Networks distributor.

Description	Fluke Networks Model Number
Cleaner for 1.25 mm LC and MU connectors, 5-pack	QuickClean-1.25-5P
Cleaner for 1.25 mm LC and MU connectors, single	QuickClean-1.25-1P
Cleaner for 2.5 mm SC, ST, FC, E200 connectors, 5-pack	QuickClean-2.5-5P
Cleaner for 2.5 mm SC, ST, FC, E200 connectors, single	QuickClean-2.5-1P
Cleaner for 12/24 MPO/MTP connectors, 5-pack	QC-MPO-12/24-5P
Cleaner for 12/24 MPO/MTP connectors, single	QC-MPO-12/24-1P
Cleaner for 16/32 MPO/MTP connectors, 5-pack	QC-MPO-16/32-5P
Cleaner for 16/32 MPO/MTP connectors, single	QC-MPO-16/32-1P
Cleaner kit: 1 QuickClean-1.25-1P, 1 QuickClean-2.5-1P, 1 QuickClean-MPO-1P, 1 solvent pen, and 1 fiber optic cleaning cube	NFC-KIT-CASE-E

# Contact Fluke Networks



[www.flukenetworks.com/support](http://www.flukenetworks.com/support)



[info@flukenetworks.com](mailto:info@flukenetworks.com)



1-800-283-5853, +1-425-446-5500



**Fluke Networks**

**6920 Seaway Boulevard, MS 143F**

**Everett WA 98203 USA**

Fluke Networks operates in more than 50 countries worldwide. For more contact information, visit our website.

## LIMITED WARRANTY AND LIMITATION OF LIABILITY

Fluke Networks mainframe products will be free from defects in material and workmanship for one year from the date of purchase, unless stated otherwise herein. Parts, accessories, product repairs and services are warranted for 90 days, unless otherwise stated. Ni-Cad, Ni-MH and Li-Ion batteries, cables or other peripherals are all considered parts or accessories. This warranty does not cover damage from accident, neglect, misuse, alteration, contamination, or abnormal conditions of operation or handling. Resellers are not authorized to extend any other warranty on Fluke Networks' behalf. To obtain service during the warranty period, contact your nearest Fluke Networks authorized service center to obtain return authorization information, then send your defective product to that Service Center with a description of the problem.

For a list of authorized resellers, visit [www.flukenetworks.com/wheretobuy](http://www.flukenetworks.com/wheretobuy).

THIS WARRANTY IS YOUR ONLY REMEDY. NO OTHER WARRANTIES, SUCH AS FITNESS FOR A PARTICULAR PURPOSE, ARE EXPRESSED OR IMPLIED. FLUKE NETWORKS IS NOT LIABLE FOR ANY SPECIAL, INDIRECT, INCIDENTAL OR CONSEQUENTIAL DAMAGES OR LOSSES, ARISING FROM ANY CAUSE OR THEORY. Since some states or countries do not allow the exclusion or limitation of an implied warranty or of incidental or consequential damages, this limitation of liability may not apply to you.

4/15

Fluke Networks  
PO Box 777  
Everett, WA 98206-0777  
USA