

# BioEntry W2

Outdoor IP Fingerprint Device



Suprema BioEntry W2 is a rugged fingerprint access control device featuring Suprema's next generation biometric technology and security platform. BioEntry W2 provides class-leading performance and security by featuring Suprema's latest fingerprint algorithm coupled by powerful quad-core CPU and LFD(live finger detection) technology. The device also provides added flexibility in system design by featuring multi card reading with dual-frequency RFID technology. Packed in a rugged IP67/IK09 housing with sleek metallic finish, BioEntry W2 is a perfect access control solution for tough environment and outdoor installation.

# BioEntry W2

## Outdoor IP Fingerprint Device

### Features



#### Best-in-class Performance

- Latest Suprema algorithm
- 1.2GHz quad-core CPU



#### Improved Accuracy & Security

- New advanced Live Finger Detection(LFD) technique
- High-precision OP5 optical sensor



#### Expanded Capacity

- Max. 500k users/1 million text logs
- Large memory: 2GB Flash + 256 MB RAM



#### Rugged Structure

- IK09 impact protection
- IP67 ingress protection
- Ideal for outdoor installation



#### Multi RFID Card Reading

- LF(125kHz), HF(13.56MHz) dual-band
- Reads all card types that HID multiCLASS supports (EM/HID Prox/MIFARE/iCLASS/DESFire/FeliCa/NFC)

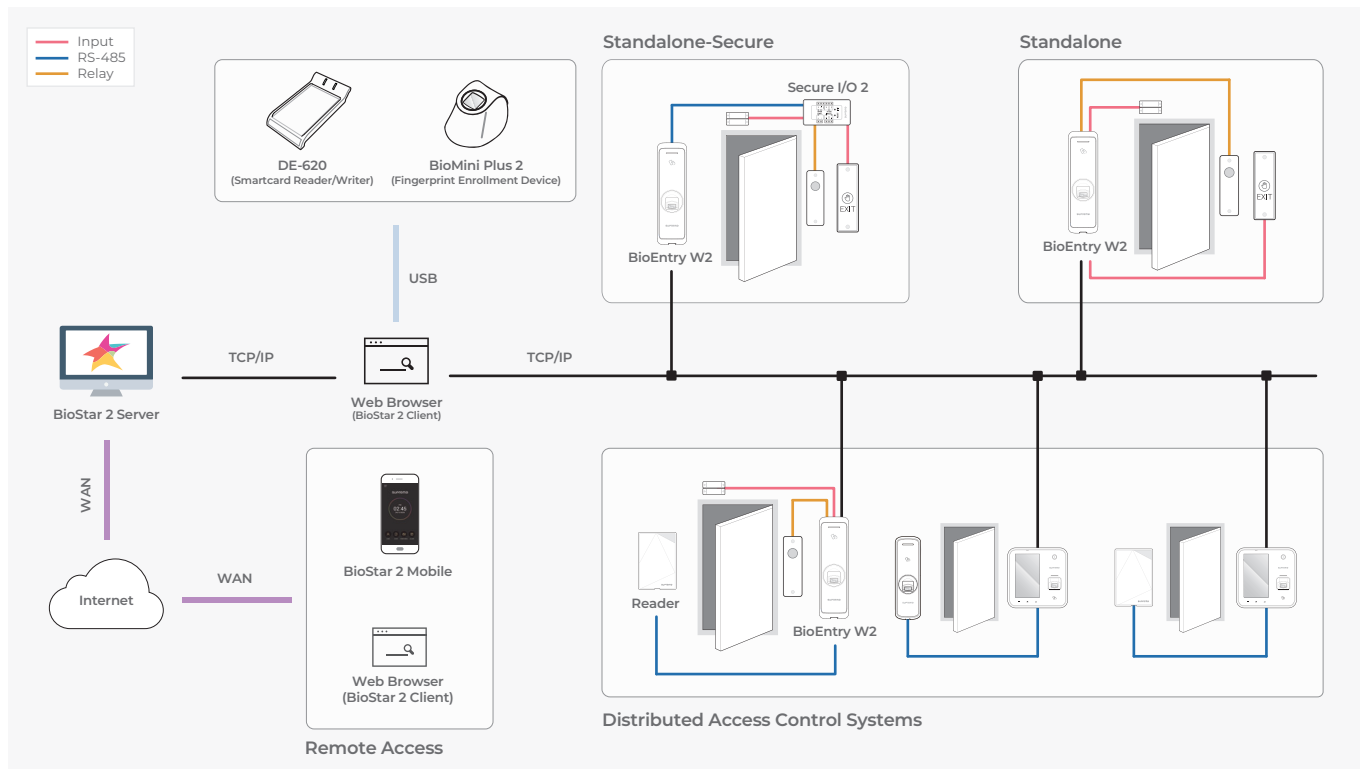
### Specifications

BEW2-ODP, BEW2-OAP, BEW2-OHP do not support BLE

Model Name	BEW2-OHPB	BEW2-ODPB	BEW2-OAPB
RF Option	125kHz EM, HID Prox & 13.56MHz MIFARE, MIFARE Plus, DESFire EV1/EV2*, FeliCa, NFC, 2.4GHz BLE	125kHz EM & 13.56MHz MIFARE, MIFARE Plus, DESFire EV1/EV2*, FeliCa, NFC, 2.4GHz BLE	125kHz EM, HID Prox & 13.56MHz MIFARE, MIFARE Plus, DESFire EV1/EV2*, FeliCa, iCLASS SE/SR/Seos, NFC, 2.4GHz BLE
Biometric	Fingerprint		
Sensor Type	Optical Sensor (OP5)		
Template	SUPREMA / ISO 19794-2 / ANSI 378		
Extractor / Matcher	MINEX certified and compliant		
LFD	Supported		
CPU	1.2 GHz Quad Core		
Memory	2GB Flash + 256 MB RAM		
Max. User	500,000 (1:1), 100,000(1:N)		
Max. Template	1,000,000(1:1), 200,000(1:N), [Two templates per finger]		
Max. Logs	1,000,000(text)		
LED	Multi-Color		
Sound	Multi-tone Buzzer		
Ethernet	10/100 Mbps, auto MDI/MDI-X		
RS-485	1ch host or slave (selectable), OSDP V2.1.6		
Wiegand	1ch input or output (selectable)		
TTL	2ch input		
Relay	1 Relay		
PoE	Supported (IEEE 802.3af compliant)		
Ingress Protection	IP67		
Impact Protection	IK09		
Tamper	Supported		
Power	Voltage: DC 12V Current: Max. 600 mA		
Operating Temperature	-20°C ~ 50°C		
Operating Humidity	0% ~ 80%, non-condensing		
Dimensions (WxHxD, mm)	50 x 172 x 43.5		
Certificates	CE, FCC, KC, RoHS, REACH, WEEE, UL 294 * UL 294 is applied to only BEW2-OAP model.		

\* DESFire EV2 cards are supported by having backward compatibility of DESFire EV1 cards. CSN and smart card functions are compatible with BioEntry W2.

### System Configurations



### Suprema Inc.

17F Parkview Tower, 248, Jeongjail-ro, Bundang-gu, Seongnam-si, Gyeonggi-do, 13554, Republic of Korea  
 T +82 31 783 4502 E sales\_sys@supremainc.com www.supremainc.com

©2020 Suprema Inc. Suprema and identifying product names and numbers herein are registered trade marks of Suprema, Inc. All non-Suprema brands and product names are trademarks or registered trademarks of their respective companies. Product appearance, build status and/or specifications are subject to change without notice. [SUPREMA-AHL-BEW2-EN-REV10]