

Cabinet Lock Overview

ELECTRONIC SECURITY HARDWARE HES & SECURITRON | MEDECO

Experience a safer
and more open world



Big Things are Happening in Small Spaces

In today's world, you don't have to look far before you find a cabinet or enclosure that is protecting some kind of a physical asset, data, or access to critical infrastructure.

Emerging trends such as enterprise managed employee lockers tell us that access control is as much about convenience as it is security. Whether you're securing lockers, drawers, doors or enclosures, we want to hear from you.

We offer a wide range of flexible, scalable solutions to meet your needs ranging from server cabinets to employee lockers and other secure storage enclosures.

- Cost effective, aesthetically pleasing low profile solutions
- Mechanical, electromagnetic, electromechanical and integrated access control options
- Your choice of wired or wireless

Contact us today: customerservice.esh@assaabloy.com

Areas of Application

- Secure file storage
- Document & equipment storage
- Chemical storage
- Display cases
- Mailrooms
- Employee lockers
- Pharmaceuticals lockers (controlled substances)
- Evidence storage (CoC – Chain of Custody)
- Data server cabinets
- Unmanned infrastructures
- Visitor lockers (or storage)





Medeco M3
Latchbolt



Medeco X4
Deadbolt



Medeco XT
Utility Cam Lock

How to Order

Model	Cylinder Technology	Finish	Keyway	Pinning
X	G	26	LT	P
	T Medeco ³	26 Satin chrome finish standard. Other finishes available, depending on volume		S Sub-assembled
	N Medeco X4			P Pinned
	G Medeco XT			M Master Keyway

Mechanical

A cabinet lock is only as secure as the key override that protects it. From mechanical to integrated access control cabinet locks, Medeco provides flexible, scalable mechanical and intelligent key override options to provide the highest level of security.

All Medeco mechanical cabinet locks feature solid brass and steel construction, available with either fixed or removable mechanical or intelligent key override options. Featuring patented key programs to prevent the unauthorized duplication of keys and maintain system integrity.

- Mechanical key override options: M3 & X4 (SFIC)
 - Available keyed alike, keyed different, or master keyed
 - Patented key control
- Electronic intelligent key override options: XT

HES K20

- Supports 13.56 MHz RFID card technologies
 - MIFARE Classic™ or MIFARE Ultralight™
- Up to 20 Master credentials
- Up to 20 User credentials

How to Order

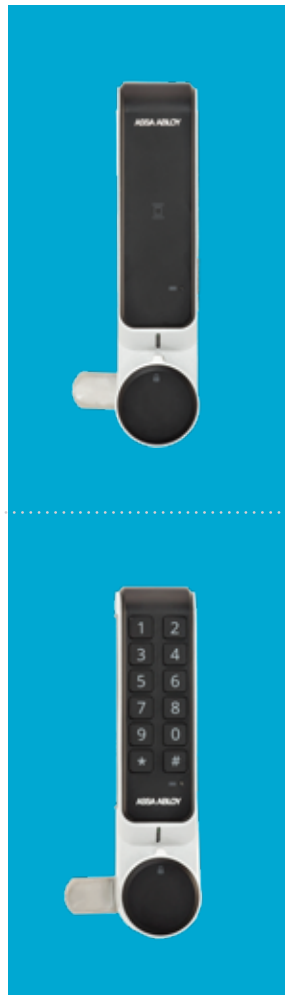
Model Series
K20
K20

HES KP20

- 12-button keypad
- One master code
- One user code

How to Order

Model Series
KP20
KP20



Stand Alone Keypad

HES K20 & KP20

The low cost HES K20 (13.56 MHz RFID) and KP20 (12-button) cabinet locks with over 75 lbs of holding force for low to medium security applications.

- User friendly programming
- No audit trail
- Supports both Public (one time use) and Private (on-going) programming modes
- Accommodates door thickness 1/16" to 7/8" [1 to 23 mm]
- Battery powered by 3x AAA alkaline batteries (est. battery life 30K cycles)

Wireless | Aperio®



HES K100

The flexible integrated cabinet locking solution for use with swinging and sliding cabinet doors and drawers with a door thickness of up to 2-1/4". The HES K100 comes standard with locked state and tamper monitoring, optional mechanical key override and over 150 lbs of holding force. It uses local 2.4 GHz wireless communication, between the lock and an Aperio® hub, to bring access control to cabinet doors and drawers where audit trail and real-time monitoring are required.

HES KS100

Designed to install easily on most cam-activated swing handle server cabinet doors with a 150 x 25 mm lock prep, the HES KS100 comes standard with locked state monitoring and supports a 6 or 7-pin SFIC (Small Format Interchangeable Core) mechanical key override. For high security applications, an optional extended DPS monitoring sensor can be connected to ensure that the cabinet is closed, locked and secure. It uses local 2.4 GHz wireless communication, between the lock and an Aperio® hub, to bring real-time monitoring and managed access to server cabinet doors that protect against malicious attacks or tampering.



HES K100

- Supports HID multiCLASS SE® card technologies
- Battery powered by 2x AA lithium batteries (est. battery life 50K cycles)
- Pinch (P) and Lever (L) knob options

Accessories

OBS-622 Open back strike plate for drawers

How to Order

Series	Model	Card Technology	Color	Knob Type	Shaft Length (Door Thickness)
K100	- 622	- IPS	- B	P	2
	622 Non-Paired for Doors (standard)	IPS HID Prox®, Kantech ioProx, HID iCLASS®, HID iCLASS SE® (SIO-enabled),	B Black	P Pinch	(Blank) 1/16" to 1/2"
	622D Non-Paired for Drawers	HID iCLASS® Seos™, HID MIFARE® SE, HID DESFire® EV1 SE, MIFARE Classic, MIFARE DESFire EV1, NFC-enabled mobile phones		L Lever	2 ≥ 1/2" to 1-1/2" 3 ≥ 1-1/2" to 2-1/4"
	622H Factory Paired for DOORS with AH20 1:1 Wiegand Hub				



HES KS100

- Supports HID multiCLASS SE® card technologies
- Battery powered by 2x AA lithium batteries (est. battery life 50K cycles)
- Integrated locked state (handle), cam rotation and tamper monitoring
- Optional external DPS sensor for real-time door status monitoring

Accessories

SFIC Medeco X4 SFIC cylinder and 2 keys (1 control, 1 user)

SFIC-BC KS SFIC blank, black plastic core

KS-DPS Surface mount DPS (external)

KS-CAM38 CAM: 38MM-1

KS-CAM45 CAM: 45MM-5

How to Order

Series	Model	Card Technology	Color	Key Override (Optional)
KS100	- S	- IPS	- B	- K1
	S Non-Paired for Swing Handle Server Cabinet Doors (standard)	IPS HID Prox®, Kantech ioProx, HID iCLASS®, HID iCLASS SE® (SIO-enabled), HID iCLASS® Seos™, HID MIFARE® SE, HID DESFire® EV1 SE, MIFARE Classic, MIFARE DESFire EV1, NFC-enabled mobile phones	B Black	(Blank) No SFIC or Blank Plastic Core (Standard)
				BC SFIC blank, black plastic core
				K1 Medeco X4 SFIC, Keyed Differently (DGV Commercial Keyway), with 2 Keys (1 Control & 1 User Key)
				MK-XXXXXX Medeco X4 SFIC, Master Keyed (DGV Commercial Keyway), with 2 Keys (1 Control & 1 User Key)

HES K200

- Supports HID multiCLASS SE® card technologies
- Hard powered by 12-24VDC (+/-10%)
- ElectroLynx® connectors for plug-n-play connectivity

Accessories

OBS-622 Open back strike plate for Drawers

CBL6-QC12 6 ft, K200/KS200 lock side interface cable, 12 conductor with Molex on both ends

CBL12-QC12 12 ft, K200/KS200 system side interface cable, 12 conductor with Molex on one end, pinned one end

WT-1 Wiegand test box with LED indicators

WT-2 Wiegand test box with LCD backlit display and LED indicators



How to Order

Series	Model	Color	Knob Type
K200	- 622	- B	2
	622 Non-Paired for Doors (standard)	B Black	2 Pinch

HES KS200

- Supports HID multiCLASS SE® card technologies
- Hard powered by 12-24VDC (+/-10%)
- Integrated locked state (handle), cam rotation and tamper monitoring
- Optional external DPS sensor for real-time door status monitoring
- ElectroLynx® connectors for plug-n-play connectivity

Accessories

SFIC Medeco X4 SFIC cylinder and 2 keys (1 control, 1 user)

SFIC-BC KS SFIC blank, black plastic core

KS-DPS Surface mount DPS (external)

KS-CAM38 CAM: 38MM-1

KS-CAM45 CAM: 45MM-5

CBL6-QC12 6 ft, K200/KS200 lock side interface cable, 12 conductor with Molex on both ends

CBL12-QC12 12 ft, K200/KS200 keep side interface cable, 12 conductor with Molex on one end, pinned one end

WT-1 Wiegand test box with LED indicators

WT-2 Wiegand test box with LCD backlit display and LED indicators



How to Order

Series	Model
KS200	- 640
	640 Wiegand, MultiCLASS SE

Online Integrated Wiegand

HES K200

The flexible integrated cabinet locking solution for use with swinging and sliding cabinet doors and drawers with a door thickness of up to 1-1/2". The HES K200 comes standard with locked state and tamper monitoring, optional mechanical key override and over 150 lbs of holding force. The lock connects using hard wired integrated Wiegand communication to bring access control to cabinet doors and drawers where audit trail and real-time monitoring are required.

HES KS200

Designed to install easily on most cam-activated swing handle server cabinet doors with a 150 x 25 mm lock prep, the HES KS200 comes standard with locked state monitoring and supports a 6 or 7-pin SFIC (Small Format Interchangeable Core) mechanical key override. For high security applications an optional extended DPS monitoring sensor can be connected to ensure that the cabinet is closed, locked and secure. It uses hard wired integrated Wiegand communication to bring real-time monitoring and managed access to server cabinet doors that protect against malicious attacks or tampering.



Online Wired



HES 610

The versatile, compact, cost effective cabinet lock with over 200 lbs of holding force that can be used to secure sliding or swinging drawers or doors. Available with or without locked state monitoring.

- Hard powered by 12-24VDC (+/-10%)
- Fail safe / fail secure operation (field selectable)
- Surface mounts easily with minimal tools

How to Order

Series	Option (s)
610	– LM
	(blank) No Monitoring
	LM Locked State Monitoring



HES 660

The strongest multi-purpose cabinet lock available from ASSA ABLOY with over 1,000 lbs of holding force that can be used to secure sliding or swinging drawers or doors. Available with or without locked state monitoring and a preload release function, allowing for smooth functional operation under a variety of environmental conditions.

- Hard powered by 12-24VDC (+/-10%)
- Fail secure operation
- Surface mounts easily with minimal tools
- Includes 6 feet [1.8m] of jacketed cable

Accessories

KO 660 Mechanical Key Override

How to Order

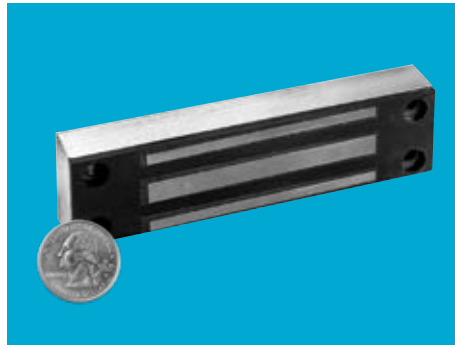
Series	Voltage	Option (s)
660	– 12V	– LBSM – Preload
	12V 12 Volt	(blank) No Preload, No Monitoring
	24V 24 Volt	Preload Up to 15 lbs
		LBSM Locked State Monitoring
		LBSM–Preload Locked State Monitoring with Preload

Securitron MCL

The durable and compact 170 lb electromagnetic cabinet lock that is ideal for extending access control to secure sliding or swinging cabinet doors – indoors or out.

Typical applications include jewelry cases, museum displays, gun cabinets, pharmaceutical storage cabinets or cash drawers.

- Fully sealed electronics - tamper proof and weatherproof
- Surface mounts easily with minimal tools using universal mounting bracket
- Includes 6 feet [1.8m] of jacketed cable



How to Order

Model Series

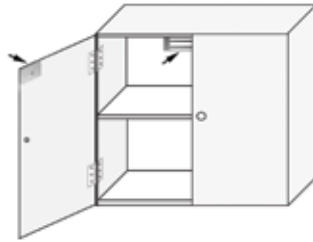
MCL-24

MCL-24

Securitron M32-SS

The durable split strike 600 lb (300 lbs per strike) electromagnetic cabinet lock that is ideal for extending access control to secure large double-door cabinet and enclosure outswinging door applications that share a center latching point – indoors or out.

- Supports 5/8" to 7/8" [15.75mm to 23 mm] door thickness
- Fully sealed electronics - tamper proof and weatherproof
- Surface mounts easily with minimal tools
- Includes 10 feet [1.8m] of jacketed cable
- Optional BondSTAT magnetic bond sensor



How to Order

Model Series	Monitoring Options	Strike Plate Options
M32	BD	-SS
M32 (600 lbs)	(blank) No Monitoring BD BondSTAT Monitor	SS Split Strike

Online Wired



The ASSA ABLOY Group is the global leader in access solutions. Every day, we help billions of people experience a more open world.

ASSA ABLOY
Opening Solutions

ASSA ABLOY Opening Solutions leads the development within door openings and products for access solutions in homes, businesses and institutions. Our offering includes doors, frames, door and window hardware, locks, perimeter fencing, access control and service.



ELECTRONIC SECURITY HARDWARE

HES | Securitron

USA

800 626 7590 | assaabloyesh.com

customerservice.esh@assaabloy.com | techsupport.esh@assaabloy.com | orders.esh@assaabloy.com

CANADA

800 461 3007 | assaabloydss.ca

sales.dss.ca@assaabloy.com | orders.dss.ca@assaabloy.com

Connect with ASSA ABLOY Electronic Security Hardware

  @assaabloyesh   ASSA ABLOY Electronic Security Hardware

Patent pending and/or patent www.assaabloydss.com/patents

Copyright © 2019, Hanchett Entry Systems, Inc., an ASSA ABLOY Group company. All rights reserved. Reproduction in whole or in part without the express written permission of Hanchett Entry Systems, Inc. is prohibited. ESH-060-1010