

CATALOGUE - DIGIBUS
english



EDVAX DOOR ENTRY



SEE, HEAR AND TALK WITH THE EXTERIOR OF THE DWELLING AND MORE BESIDES.

Seeing what goes on outside the home, recognising those who ring our doorbell and communicating accurately are all crucial operations for living a quiet life. This is why we need access to advanced solutions based on innovative technology that can ensure the security and clarity we require by simultaneously combining user-friendliness with a system that is simple to install. Not to mention a sharp focus on design and typically stylish Italian production, which provides essential added value.

> When technology is high-performance the solutions multiply.

Digibus technology can be easily used to create even large systems, guaranteeing the highest performance in any type of building, from small homes to large residential complexes. A high-performance system that is capable of accurately meeting all building requirements.



> The complete range.

A wide selection of video door entry units, door entry units and outdoor panels for residential and tertiary settings. All products vary in size, design, structure, type of system, functions and installations. They all share high structural quality, attention to design, easy installation and use.



DIGIBUS TECHNOLOGY.

Digibus is a 8-digit system for large building renovations using a reduced number of conductors. This technology enables to cover large distance between outdoor stations and indoor units being useful for many users.



DIGIBUS



> Performance.

3 4
1 6
8 7

99,999,999 codes.

The encoding system of Digibus is made of 8-digit to create 99,999,999 call chances, in order to organize and identify, in large building, the number for the building, floor and flat.



Up to 1000 metres.

With Digibus technology can be possible to realize large systems until to 1000 metres. The signal transit (audio, call and service activation) is made by a BUS line with a reduced number of conductors.



Complete range.

A wide range of video entryphones, entryphones and outdoor stations for residential and tertiary contexts. All the products are different in dimensions, design, structure, installation types and functions. All are based on the high structural quality and facility of the use.



Up to 200 metres.

In the Digibus technology, the colour video signal flows in a coaxial cable, which can reach up to 200 metres of distance without quality loss and without using video amplifiers.



Up to 99 outdoor stations.

In a Digibus it is possible to install in the same system up to 99 outdoor stations and to connect in parallel up to 10 to realize system with large dimensions.

EXTERNAL ENTRANCE PANELS.



> 1300 Series. Built to suit your needs.

Soft, modern design with non-scratch finish. The 1300 series is made from 1.8 mm thick electro-polished anodized aluminium. Designed for flush and surface mounting, it has high-efficiency LED green backlighting that makes it visible even at night.

Modern and resistant.

Soft, modern design with non-scratch finish. The 1300 series is made from 1.8 mm thick electro-polished anodized aluminium. Designed for flush and surface mounting, it has high-efficiency LED green backlighting that makes it visible even at night.

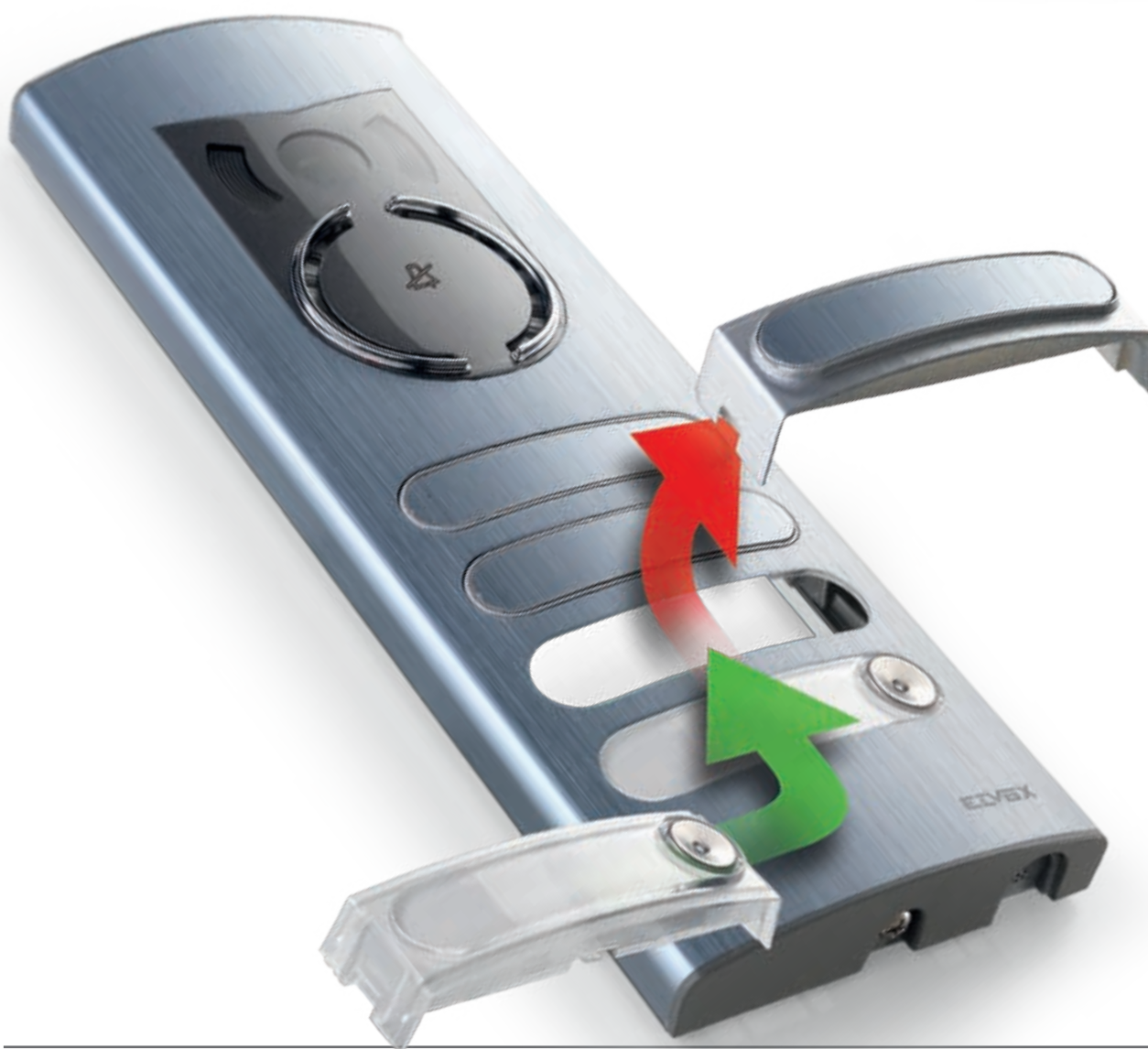


Accessories to satisfy all type of installations.

Flush and surface mounting boxes for every installation requirements and to complete with rainproof covers.

Versatility and customisation.

The basic cover plate comprises an audio-video module and a module with 1 push button and 3 blank modules which can be replaced by conventional push buttons. This allows you to create the keypad as you wish, with an infinite combination of cover plates and push buttons. The 1300 series is also available with an alphanumeric keypad.



> 1200 and 1200 Reinforced Series. High performance, versatility and design.



With a modern, technological design the 1200 series comes with elegant finishes and high-performing yet user friendly technology. The 1200 series can be wall-mounted or flush-mounted with the related accessories. A reinforced version is also available, in sable grey satin-finished paint, which is particularly resistant to atmospheric agents and with degree of protection against impacts to IK10 it is ideal for installation in saline environments.



One material, two colours and two finishes.
To satisfy every style.

The cover plates are made in 8/10 thick AISI 316 stainless steel and come in two different finishes: stainless steel colour with embossed surfaces or sable grey colour with satin-finished paint.



steel with embossed surface



grigio sablé



> 8000 series. An evergreen series.



Square shapes and simple lines characterise this highly flexible and modular product. The 8000 series comes in the colour variants light grey, sable grey, anthracite and brushed aluminium, suited to any residential context.



Versatility.

The 8000 series is made from 18/10 thick extruded aluminium, knock-proof technopolymer front mask with non-scratch finish, resistant to UV rays and aggressive solvents. The series includes different types of modules which, installed on the module holder frame, form the cover plate that best suits the customers' needs.



INDOOR UNITS.



> 6600 Series.

The video door entry systems in the 6600 series also stand out for their special 3.5" TFT LCD monitors, with vertical tilt function, which help the user clearly view in detail who is at the door. They combine technology and design, and are flexible solutions that can be used in various contexts.



Hands-free for total comfort.

No wires, no handset, for totally free communication.

Maximum functionality.

Available up to 8 buttons for video door entry functions.

> New Giotto.

Substantial.

The Giotto series comes with all basic video door entry system functions: colour monitor, speaker for electronic calls and three push buttons for opening the doors, self start and auxiliary functions. IT CAN be wall or desktop mounted using the conversion kit.





> Petrarca



PETRARCA
Monitor +
door entry unit

Design.

With the typical appearance of the door entry phone, it has a simple and essential line but excellent functionality. For those looking for the essential in both shape and function.

Installation versatility.

The Petrarca entryphone functions can be expanded with accessories: colour monitor, call volume control and additional push buttons. Wall-mounted or desktop installation requires the relative fixing brackets or desktop installation kit.

> 8870

Functions.

The 8870 series comes in the standard configuration with two push buttons (one to open the lock and the other for auxiliary services).



PETRARCA
audio door
entry unit

Index

QUICK GUIDE TO THE RIGHT SYSTEM SOLUTION AND TYPICAL SYSTEMS

from page 12

ENTRANCE PANELS

from page 16

VIDEO ENTRYPHONES AND INTERPHONES

from page 22

ADDITIONAL DEVICES

from page 23

Quick guide to the right system solution

Audio and audio/video systems (Sound System).

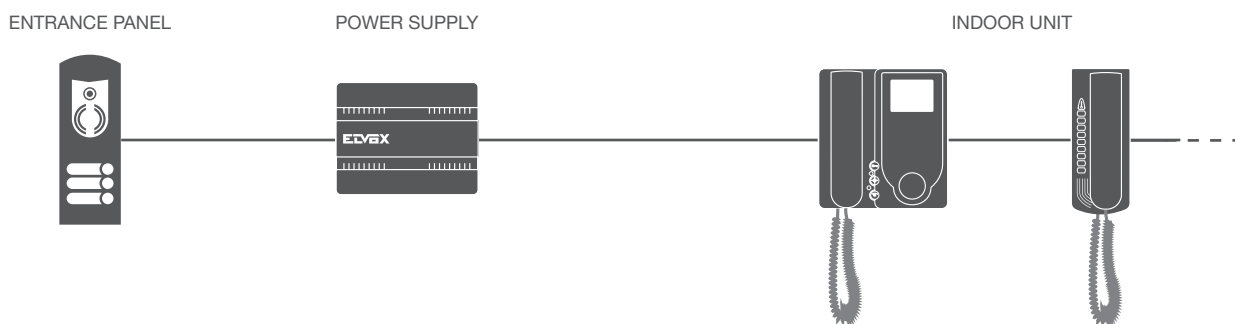
Basic system components:

- Entrance panel (external unit + mechanical media).
- Power supply and indoor units (audio or audio + video).
- Transformer+relay (link many inputs)
- In the Digibus systems the number of conductors are steady and independent from the number of the indoor units.

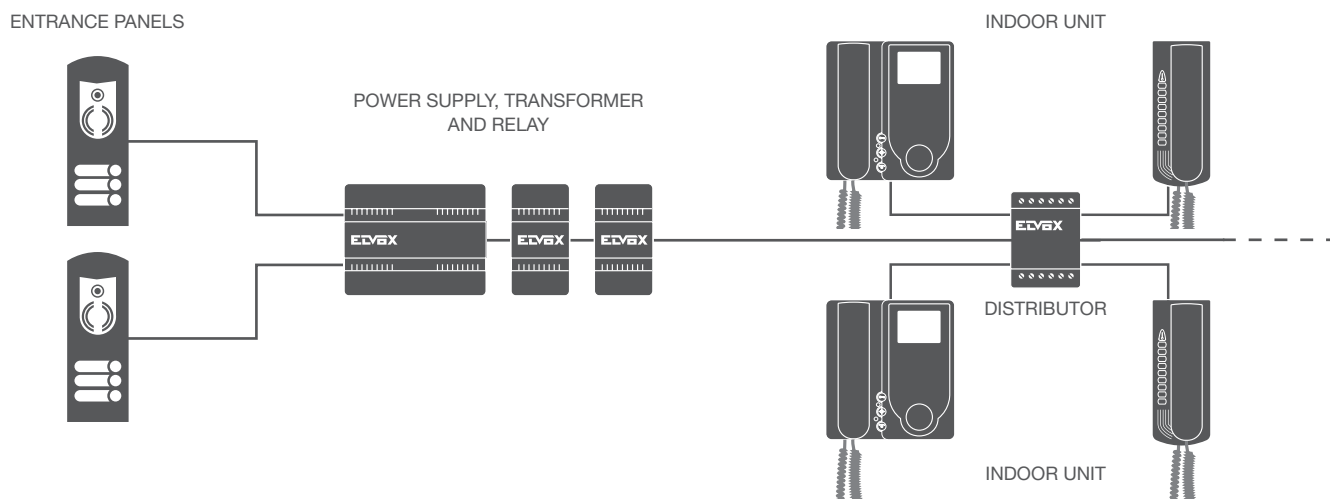
In the case of indoor units, on the other hand, installations may use:

- Linear wiring (enter-exit, no additional device needed).
- Wiring with floor distributor, allowing 4 outputs to be taken off the riser.

With single entrance panel.

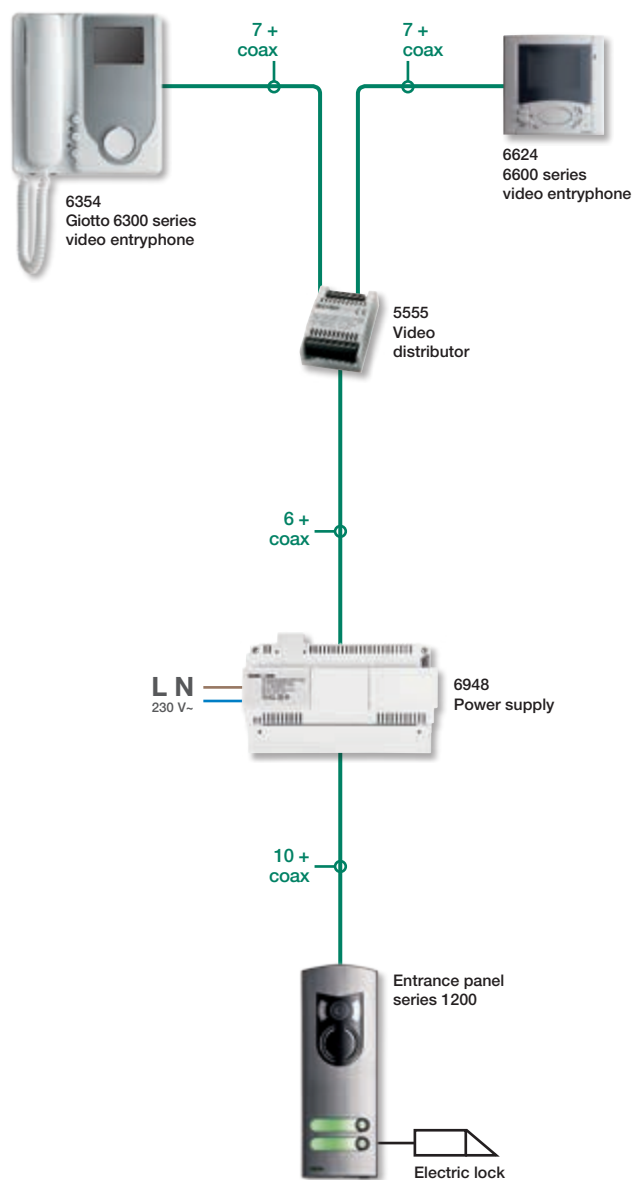


With more than one entrance panel and floor distributor.



Digibus - Examples of standard systems

Semi-detached villa with video door entry system.

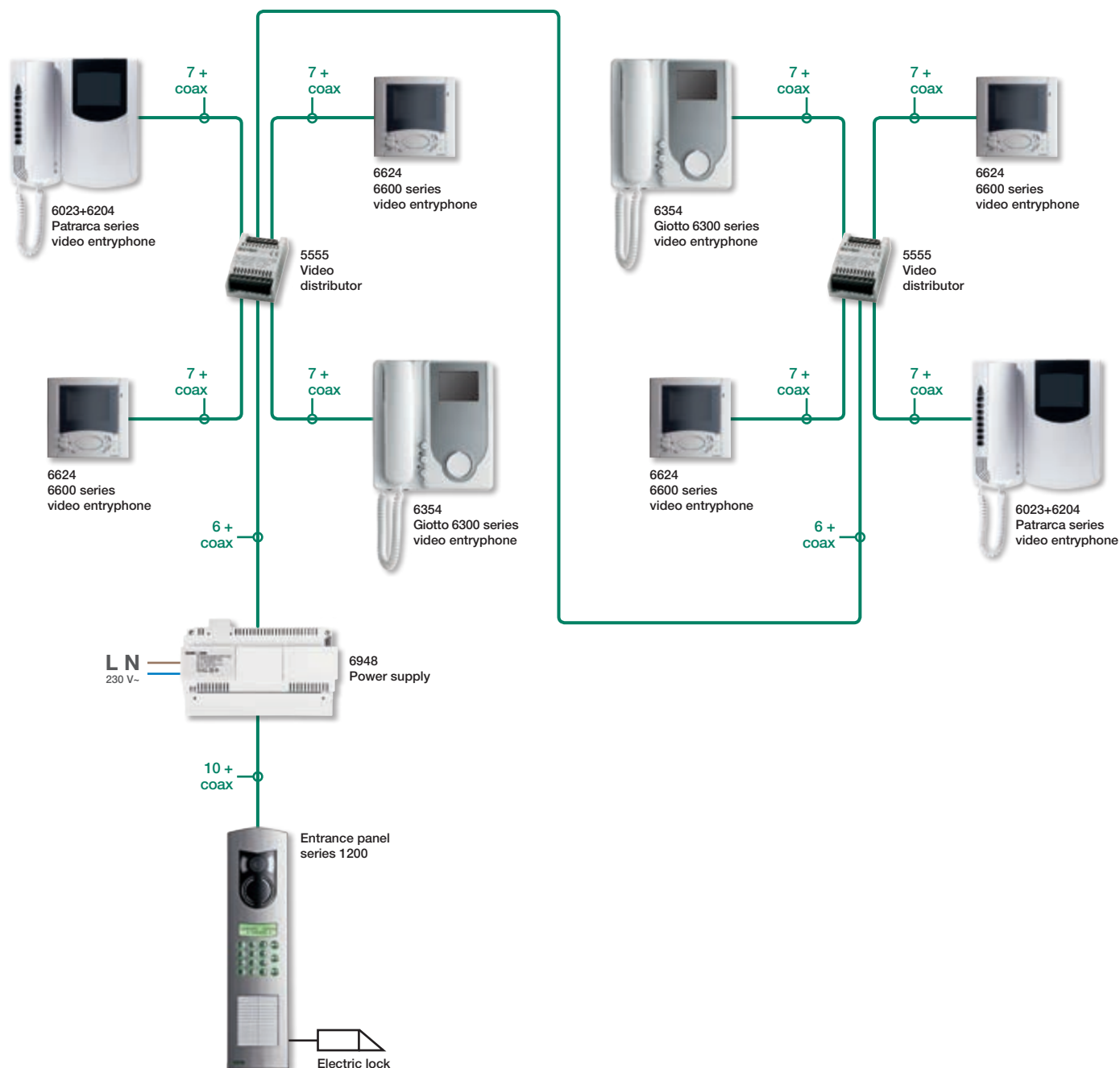


Connections between system devices	Max distance (maximum distance between devices)		
	Up to 50 m	Up to 100 m	Up to 200 m
Terminals (entrance panel - power supply - video entryphones/entryphones)	0,5 mm ² (1 / 3 / 6 / 8 / SR / +I / CH / F1 / F2); 0,75 mm ² (4 / 5); 1 mm ² (+ / - / S1 / 0 / 15)	0,75 mm ² (1 / 3 / 6 / 8 / SR / +I / CH / F1 / F2); 1 mm ² (4 / 5); 1,5 mm ² (+ / - / S1 / 0 / 15)	1 mm ² (1 / 3 / 6 / 8 / SR / +I / CH / F1 / F2); 1,5 mm ² (4 / 5); 2,5 mm ² (+ / - / S1 / 0 / 15)
Coaxial type RG59 or RG11			

Table relating to configuration with 1 external unit, 2 individually activated indoor units, power supply and video distributor

Digibus - Examples of standard systems

Apartment block with video door entry system.

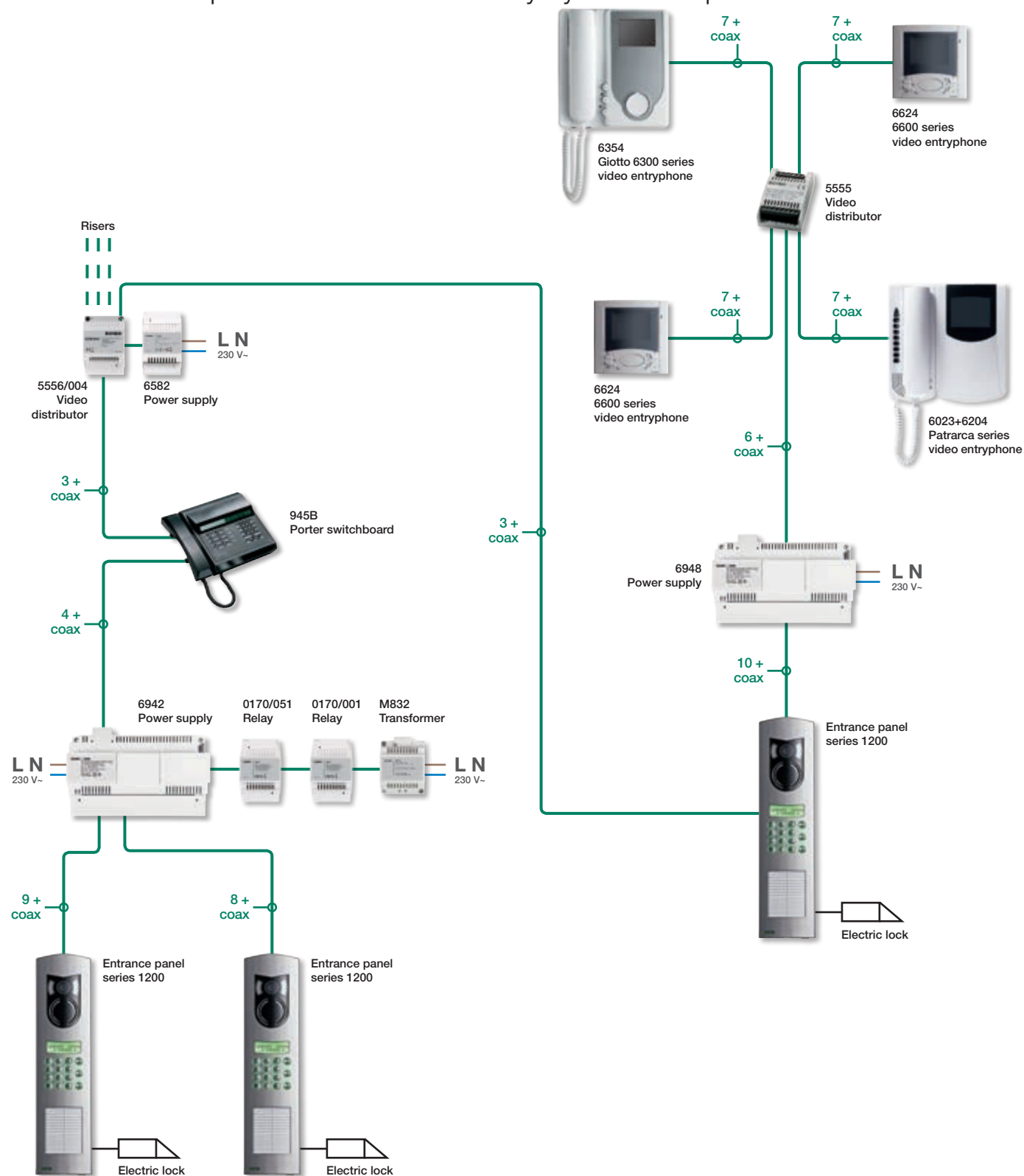


Connections between system devices	Max distance (maximum distance between devices)		
	Up to 50 m	Up to 100 m	Up to 200 m
Terminals (entrance panel - power supply - video entryphones/entryphones)	0,5 mm ² (1 / 3 / 6 / 8 / SR / +I / CH / F1 / F2); 0,75 mm ² (4 / 5); 1 mm ² (+ / - / S1 / 0 / 15)	0,75 mm ² (1 / 3 / 6 / 8 / SR / +I / CH / F1 / F2); 1 mm ² (4 / 5); 1,5 mm ² (+ / - / S1 / 0 / 15)	1 mm ² (1 / 3 / 6 / 8 / SR / +I / CH / F1 / F2); 1,5 mm ² (4 / 5); 2,5 mm ² (+ / - / S1 / 0 / 15)
Coaxial type RG59 or RG11			

Table relating to configuration with 1 external unit, 8 individually activated indoor units, power supply and video distributor

Digibus - Examples of standard systems

Residential complex with video door entry system and porter switchboard.



Connections between system devices	Max distance (maximum distance between devices)		
	Up to 50 m	Up to 100 m	Up to 200 m
Terminals (entrance panel - power supply - video entryphones/entryphones)	0,5 mm ² (1 / 3 / 6 / 8 / SR / +I / CH / F1 / F2); 0,75 mm ² (4 / 5); 1 mm ² (+ / - / S1 / 0 / 15)	0,75 mm ² (1 / 3 / 6 / 8 / SR / +I / CH / F1 / F2); 1 mm ² (4 / 5); 1,5 mm ² (+ / - / S1 / 0 / 15)	1 mm ² (1 / 3 / 6 / 8 / SR / +I / CH / F1 / F2); 1,5 mm ² (4 / 5); 2,5 mm ² (+ / - / S1 / 0 / 15)
Coaxial type RG59 or RG11			

Digibus technology

Electronic units for 1300, 1200, reinforced 1200 and 8000 series

Audio and audio/video electronic units



1285
Audio/Video,
8-button in
2 rows



1286
Audio/Video, with
alphanumerical key-
pad, stainless steel
buttons



1283
Audio,
8-button in
2 rows



1282
Audio, with
alphanumerical key-
pad, stainless steel
buttons



12TS
4-button
additional unit

1300 series: entrance panels

2- and 3-module entrance plates and additional plates



1321
1-button and
3 blank covers,
electropolished
anodized aluminium



132D
Alphanumerical
keypad,
electropolished
anodized aluminium



1358
Additional,
8-button,
electropolished
anodized aluminium



132N
Additional,
with name-plate,
electropolished
anodized aluminium



1331
1-button and
7 blank covers,
electropolished
anodized aluminium



133D
Alphanumerical key-
pad and
1 name-plate,
electropolished
anodized aluminium



133N
Additional,
with name-plate,
electropolished
anodized aluminium



1372
Additional,
12-button,
electropolished
anodized aluminium

Accessories



R130
Blank module for
1300 entrance plate



R131
Button for 1300
entrance plate

Mounting boxes



9192
2 modules



9193
3 modules

1300 series: entrance panels

2- and 3-module rainproof covers



C321
2 modules, electropolished
anodized aluminium

C331
As above, 3 modules



C322
2x2 modules, electropolished
anodized aluminium

C332
As above, 3x2 modules



C323
2x3 modules, electropolished
anodized aluminium

C333
As above, 3x3 modules



C324
2x4 modules, electropolished
anodized aluminium

C334
As above, 3x4 modules

Surface mounting boxes with built-in rainproof cover



S321
2 modules,
electropolished
anodized
aluminium



S331
3 modules,
electropolished
anodized
aluminium



S322
2x2 modules,
electropolished
anodized
aluminium



S332
3x2 modules,
electropolished
anodized
aluminium



S323
2x3 modules,
electropolished
anodized
aluminium



S333
3x3 modules,
electropolished
anodized
aluminium



S324
2x4 modules,
electropolished
anodized
aluminium



S334
3x4 modules,
electropolished
anodized
aluminium

1200 series: entrance panels

2-module audio/video



1220
No buttons,
stainless steel



1221
1-button,
stainless steel



1222
2-button,
stainless steel



1223
3-button,
stainless steel



1224
4-button,
stainless steel



122D
Alphanumeric
keypad,
stainless steel

1200 series: entrance panels

Additional entrance plates



1256
6-button,
stainless steel



1258
8-button,
stainless steel



122N
With name-plate,
stainless steel

3-module audio/video and additional entrance plates



1235
5-button,
stainless steel



1236
6-button,
stainless steel



1237
7-button,
stainless steel



1238
8-button,
stainless steel



123D
Alphanumeric key-
pad + name-plate,
stainless steel



1272
12-button,
stainless steel



123N
With name-plates,
stainless steel

Reinforced 1200 series: audio/video and audio entrance panels

2-module audio/video and additional entrance plates



1220/35
No buttons,
IK10 protection,
sable grey



1221/35
1-button,
IK10 protection,
sable grey



1222/35
2-button,
IK10 protection,
sable grey



1223/35
3-button,
IK10 protection,
sable grey



1224/35
4-button,
IK10 protection,
sable grey



1258/35
Additional,
8-button,
IK10 protection,
sable grey



122D/35
Alphanumeric
keypad,
IK10 protection,
sable grey



122N/35
Additional,
name-plate,
IK10 protection,
sable grey

1200 series: audio/video and audio entrance panels

2- and 3-module flush mounting



9192
2 modules

9193
3 modules

2- and 3-module rainproof covers



1P21
2 modules,
stainless steel



1P31
3 modules,
stainless steel



1P22
2x2 modules,
stainless steel



1P32
3x2 modules,
stainless steel



1P23
2x3 modules,
stainless steel



1P33
3x3 modules,
stainless steel



1P24
2x4 modules,
stainless steel



1P34
3x4 modules,
stainless steel

2- and 3-module surface mounting boxes with built-in rainproof cover



1E21
2 modules,
stainless steel



1E31
3 modules,
stainless steel



1E22
2x2 modules,
stainless steel



1E32
3x2 modules,
stainless steel



1E23
2x3 modules,
stainless steel



1E33
3x3 modules,
stainless steel



1E24
2x4 modules,
stainless steel



1E34
3x4 modules,
stainless steel

8000 series: audio/video and audio entrance panels

Standard modules for audio/video entrance panels (1282, 1283, 1285 and 1286 electronic units)



RPC5
Audio/video, for
RPR1, RP00, RP01,
RP02, RP03,
light grey



RPF3
Audio for
RPR1, RP01,
RP02, RP03,
light grey



RPR1
Keypad and display,
for RPC5, RPF3,
light grey



RP00
Without buttons,
with BUSY-WAIT,
light grey



RP01
1-button, with
BUSY-WAIT,
light grey



RP02
2-button, with
BUSY-WAIT,
light grey



RP03
3-button, with
BUSY-WAIT,
light grey

Additional modules (12TS electronic unit)



RPS1
1-button,
for 12TS,
light grey



RPS2
2-button,
for 12TS,
light grey



RPS3
3-button,
for 12TS,
light grey



RPS4
4-button,
for 12TS,
light grey



805N
Name-plate
for 13 names,
light grey



80PN
House number,
light grey



8000
Blank module,
light grey

Frames



8082
For 2 modules and
for additional
modules only,
RAL 7035 grey



8092
For electronic units
13F3, 13F4,
13F5, 13F7,
RAL 7035 grey



8083
For 3 modules and
for additional modules
only, RAL 7035 grey



8093
For electronic units
13F3, 13F4, 13F5,
13F7, 12TS, 12TD,
RAL 7035 grey

Digibus technology

8000 series: audio/video and audio entrance panels

Flush mounting boxes



9192
2 modules



9193
3 modules

Rainproof covers



9212
2 modules,
light grey

9213
3 modules,
light grey



9222
2x2 modules,
light grey

9223
2x3 modules,
light grey



9232
3x2 modules,
light grey

9233
3x3 modules,
light grey



9242
4x2 modules,
light grey

9243
4x3 modules,
light grey

Surface mounting boxes



9312
2 modules,
light grey

9313
3 modules,
light grey



9322
2x2 modules,
light grey

9323
2x3 modules,
light grey



9332
3x2 modules,
light grey

9333
3x3 modules,
light grey



9342
4x2 modules,
light grey

9343
4x3 modules,
light grey

Petrarca series: video entryphones and interphones

Monitor



6023
Colour TFT LCD monitor
with 3.5" screen, white

Interphones



6204
Interphone supplied with
1 button + 8 additional,
white



6204/1
Interphone supplied with
1 button + 8 additional,
white with white buttons



62K4
Interphone supplied with
1 button + 2 additional,
white

Accessories



6152
8 NO additional
buttons for
interphones



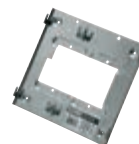
6157
Additional NC
button



6C59
Pair of NO buttons for
additional function



6153
4-position switching
module for setting
the volume mode



6145
Surface mounting
bracket for monitor
and interphone
mounting



6142
Desktop base for interphone
and monitor mounting, 2 m
13-conductor + 1 coaxial
cable, white



6140
Desktop base for interphone,
2 m 6-conductor cable and
terminal block, white

6600 series: video entryphones

Video entryphones



6624
Flush mounting video entry-
phone, 3.5" LCD
display, vertical tilt
movement, white



6149
8-module flush
mounting box

Giotto series: video entryphones

Video entryphones



6354
Surface mounting video entry-
phone, with 3.5" colour moni-
tor, with 3 buttons, white



661A
Desktop base for monitor,
2 m 13-conductor +
1 coaxial cable, white

661B
As above, with built-in
power supply unit 230 V~

8870 series: interphones

Interphones



887B
Interphone for surface
mounting with 2 buttons,
white

887B/1
As above

Additional devices

Porter switchboard



945B
Internal-external switching switch-
board, option of intercommunication
between users, to the exclusion of the
building complex, parallel connection
of switchboards, with keypads and
numeric display

945B.EN
As above, with instructions in English

945B.SP
As above, with instructions in Spanish

Power supplies



6948
Video entry system supply unit,
12-13,5-15-18 Vdc, 230 V~ 50/60 Hz

6948/240
As above, 240 V~



6947
Additional video entry system supply
unit, 18 Vdc, 230 V~ 50/60 Hz

6947/240
As above, 240 V~



6583
Additional video entry system
supply unit, 13,5/15/18 Vdc,
230 V~ 50/60 Hz

6583/240
As above, 240 V~



6941
Entry system supply
unit, 12-13,5-15 Vdc,
230 V~ 50/60 Hz

6941/110
As above, 240 V~

6941/117
As above, 117 V~

6941/C17
Entry system supply
unit, 12-13,5-15 Vdc,
117 V~ 60 Hz,
UL6500 Standard

6941/240
As above, 240 V~



6942
Additional entry system supply unit,
12-13,5-15 Vdc, 230 V~ 50/60 Hz

6942/240
As above, 240 V~



6582
Additional supply unit
for LED and cameras,
10,5/13,5/18 Vdc, 230 V~
50/60 Hz 35 VA

6582/240
As above, 240 V~

Digibus technology

Additional devices

Transformers



M832
Safety transformer
with 12 V~ output, 35 VA
230 V~ 50/60 Hz



0832/030
Safety transformer
with 15 V~ output, 50 VA
230 V~ 50/60 Hz

0832/030.062
As above,
240 V~ 50/60 Hz

Devices



6949
Programmable multi-
functional device for
special applications

Distributors



5556/004
Distributor for floor
video signal or for
several risers, with
4 outputs



5555
Video floor
distributor,
4 outputs

Separator



949S
Divider for decoupling the
digital signal, phonic and
supply lines

Relays



0170/001
3 A 230 V~
change-over relay,
power supply
12 Vdc or Vac



0170/051
3 A 230 V~ relay
for video signal
switching, supply
voltage 12 Vdc
or Vac



0170/101
3 A 230 V~
change-over relay
for call repetition

Configurator and interfaces



950B
Portable system
configurator

Call repeater



0002/841.05
Electronic call repeater
loudspeaker



Viale Vicenza, 14
36063 Marostica VI - Italy
Tel. +39 0424 488 600
Fax +39 0424 488 709
www.vimar.com