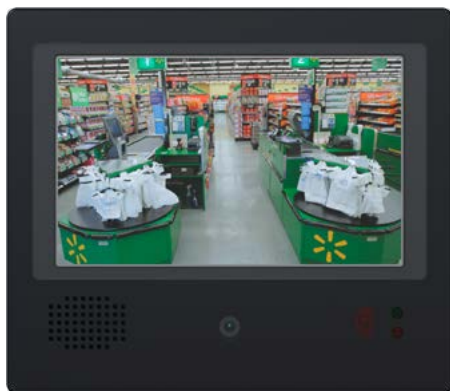




WDL-EPVM5

- High quality and cost-effective
- Low power consumption for cost savings
- Built-in WDR HD camera with motion sensing
- Built-in Removable SD card for displaying advertising or corporate message
- on-board DVR included with SD card slot
- Switch between camera video and display advertisement on motion activity
- User definable text warning message
- Built-in alarm I/O
- Compatible management S/W (verint nextiva 6.x, march video sphere R5)

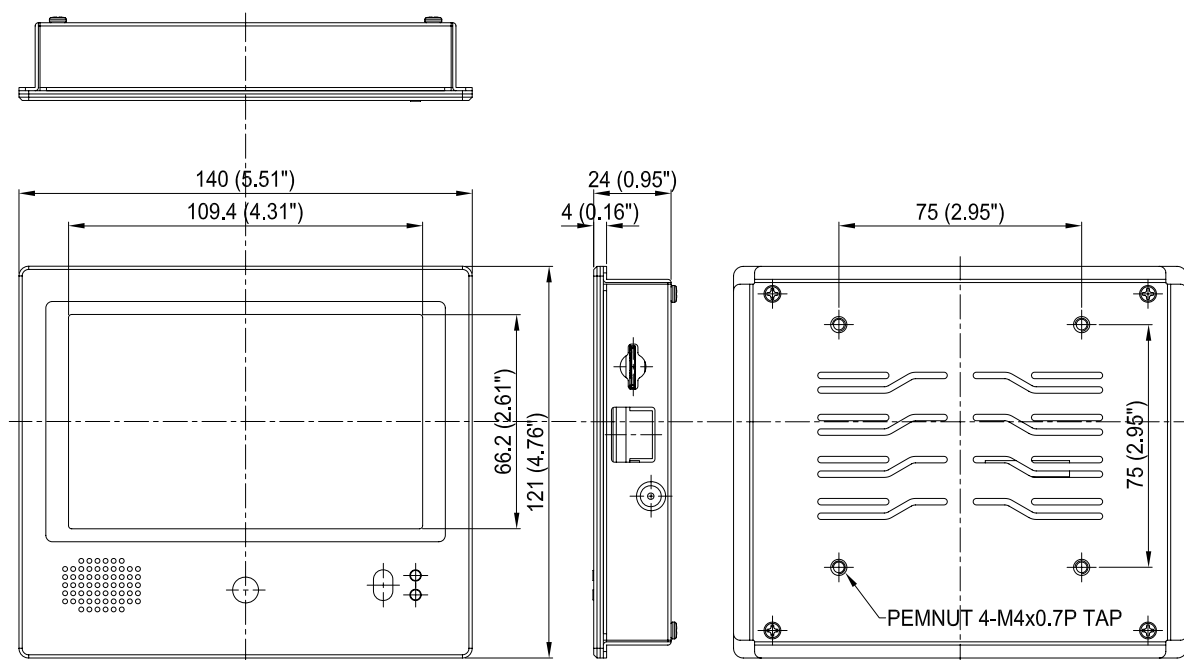


Specification

	Section	5" EPVM
Display	Screen size	5"
	Resolution	800×480
	Brightness	600 cd/m²
	Contrast ratio	500 : 1
	Response time	< 20ms
	Viewing angle	140(H) / 120(V)
	Aspect ratio	16:9
Camera	Image sensor	1/2.7" omnivision 1.3M progressive C-MOS
	Lens	Fixed 3.7mm F2.0
	Active pixel	1280(H)×720(V)
	Frame rate	30 fps
	Shutter	Rolling shutter
	Wide dynamic range	115 dB
Interface	Sensitivity	3650 mV/Lux-sec
	Storage	Internal micro SD card slot for recording External micro SD card slot for backup, media, upgrade
	Alarm I/O	Terminal block 4P
	Speaker	1W mono speaker
	User I/ F	User input I/F Indicators
	Mount	Remote controller (coming soon) Power, record LEDs VESA™ 75×75mm
Power	Power adapter	12VDC 4A
	Power consumption	< 0.5A
Environmental	Operating temperature	0°C ~ 50°C
	Humidity	10 ~ 90% RH, non condensing
Dimensions	Outline dimension (mm)	140(W)×121(H)×24(D)
	Weight	-

Dimensions

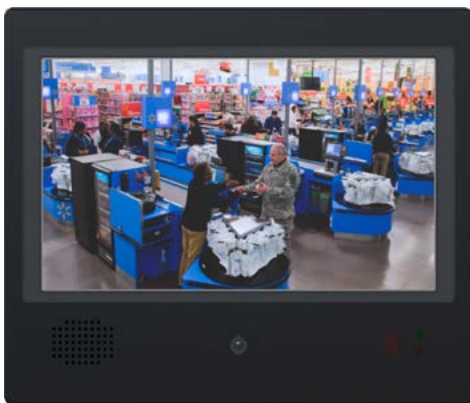
Unit: mm (inch)





WDL-EPVM7

- High quality and cost-effective
- Low power consumption for cost savings
- Built-in WDR HD camera with motion sensing
- Built-in Removable SD card for displaying advertising or corporate message
- on-board DVR included with SD card slot
- Switch between camera video and display advertisement on motion activity
- User definable text warning message
- Built-in alarm I/O
- Compatible management S/W (verint nextiva 6.x, march video sphere R5)

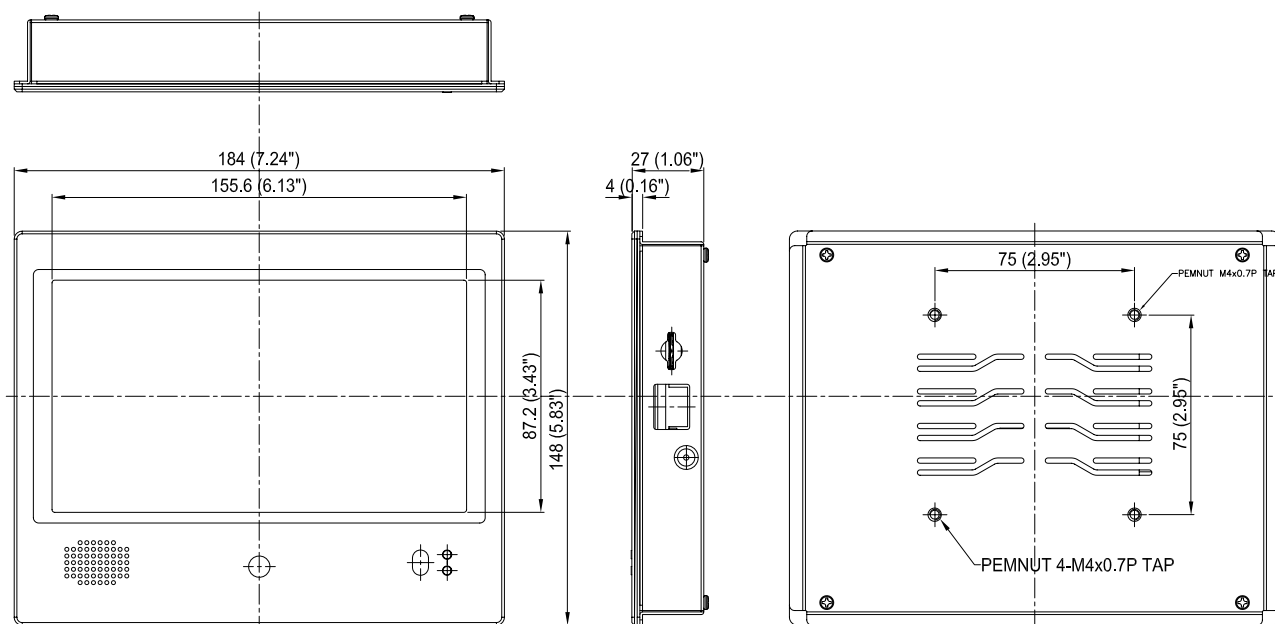


Specification

	Section	7" EPVM
Display	Screen size	7"
	Resolution	800×480
	Brightness	400 cd/m ²
	Contrast ratio	500 : 1
	Response time	< 20ms
	Viewing angle	140(H) / 120(V)
	Aspect ratio	16:9
Camera	Image sensor	1/2.7" omnivision 1.3M progressive C-MOS
	Lens	Fixed 3.7mm F2.0
	Active pixel	1280(H)×720(V)
	Frame rate	30 fps
	Shutter	Rolling shutter
	Wide dynamic range	115 dB
Interface	Sensitivity	3650 mV/Lux-sec
	Storage	Internal micro SD card slot for recording External micro SD card slot for backup, media, upgrade
	Alarm I/O	Terminal block 4P
	Speaker	1W Mono speaker
	User I/ F	User input I/F
	Indicators	Remote controller (coming soon) Power, record LEDs
Power	Mount	VESA™ 75×75mm
	Power adapter	12VDC 4A
	Power consumption	< 0.7A
Environmental	Operating temperature	0°C ~ 50°C
	Humidity	10 ~ 90% RH, non condensing
Dimensions	Outline dimension (mm)	184(W)×148(H)×27(D)
	Weight	-

Dimensions

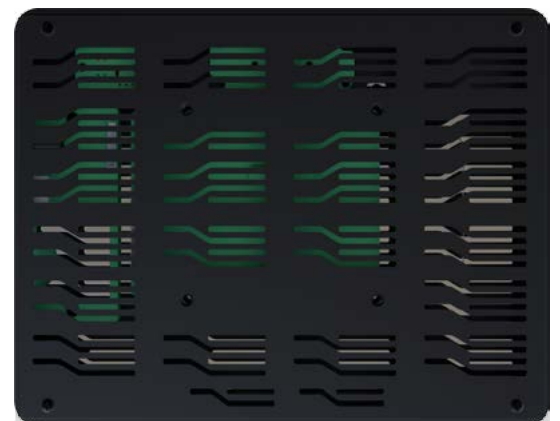
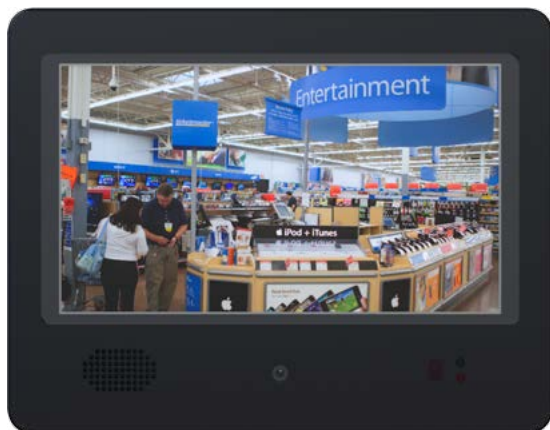
Unit: mm (inch)





WDL-EPVM8

- High quality and cost-effective
- Low power consumption for cost savings
- Built-in WDR HD camera with motion sensing
- Built-in Removable SD card for displaying advertising or corporate message
- on-board DVR included with SD card slot
- Switch between camera video and display advertisement on motion activity
- User definable text warning message
- Built-in alarm I/O
- Compatible management S/W (verint nextiva 6.x, march video sphere R5)

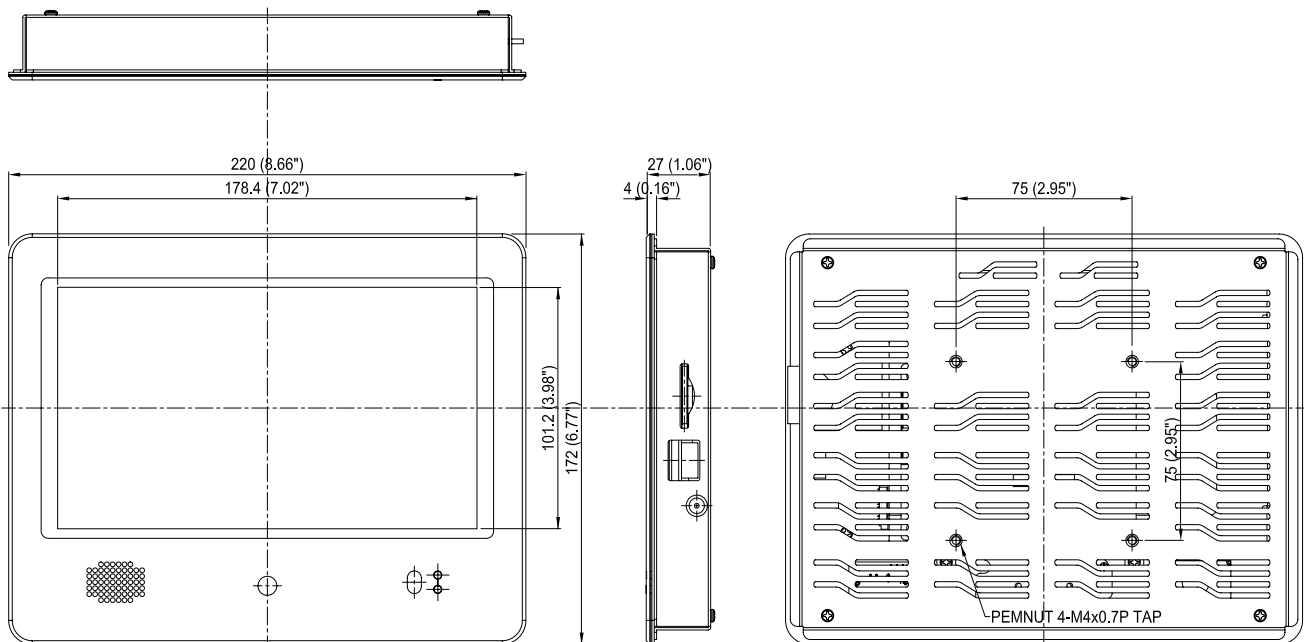


Specification

	Section	8" EPVM
Display	Screen size	8"
	Resolution	800×480
	Brightness	450 cd/m ²
	Contrast ratio	500 : 1
	Response time	< 20ms
	Viewing angle	140(H) / 120(V)
	Aspect ratio	16:9
Camera	Image sensor	1/2.7" omnivision 1.3M progressive C-MOS
	Lens	Fixed 3.7mm F2.0
	Active pixel	1280(H)×720(V)
	Frame rate	30 fps
	Shutter	Rolling shutter
	Wide dynamic range	115 dB
Interface	Sensitivity	3650 mV/Lux-sec
	Storage	Internal micro SD card slot for recording External SD card slot for backup, media, upgrade
	Alarm I/O	Terminal block 4P
	Speaker	1W mono speaker
	User I/ F	User input I/F
	Indicators	Remote controller (coming soon) Power, record LEDs
Power	Mount	VESA™ 75×75mm
	Power adapter	12VDC 4A
	Power consumption	< 0.7A
Environmental	Operating temperature	0°C ~ 50°C
	Humidity	10 ~ 90% RH, non condensing
Dimensions	Outline dimension (mm)	220(W)×172(H)×27(D)
	Weight	-

Dimensions

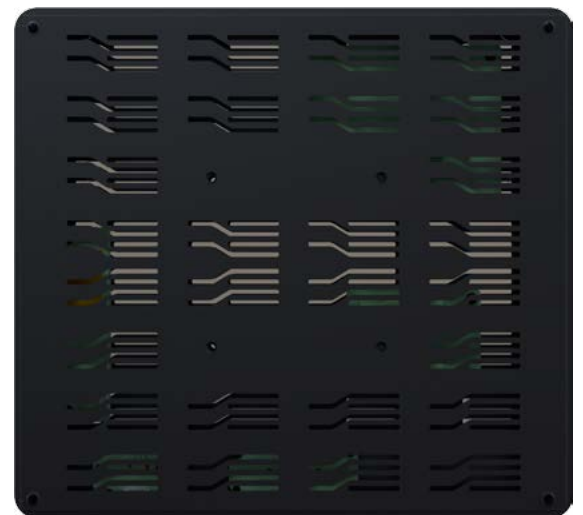
Unit: mm (inch)





WDL-EVPM10

- High quality and cost-effective
- Low power consumption for cost savings
- Built-in WDR HD camera with motion sensing
- Built-in Removable SD card for displaying advertising or corporate message
- on-board DVR included with SD card slot
- Switch between camera video and display advertisement on motion activity
- User definable text warning message
- Built-in alarm I/O
- Compatible management S/W
(verint nextiva 6.x, march video sphere R5)



Specification

	Section	10" EPVM
Display	Screen size	10.4"
	Resolution	800×600
	Brightness	450 cd/m²
	Contrast ratio	300 : 1
	Response time	< 30ms
	Viewing angle	150(H) / 110(V)
	Aspect ratio	4:3
Camera	Image sensor	1/2.7" omnivision 1.3M progressive C-MOS
	Lens	Fixed 3.7mm F2.0
	Active pixel	1280(H)×720(V)
	Frame rate	30 fps
	Shutter	Rolling shutter
	Wide dynamic range	115 dB
	Sensitivity	3650 mV/Lux-sec
Interface	Storage	Internal micro SD card slot for recording External SD card slot for backup, media, upgrade
	Alarm I/O	Terminal block 4P
	Speaker	1W mono speaker
	User I/ F	User input I/F Indicators
		Remote controller (coming soon)
		Power, record LEDs
Power	Mount	VESA™ 75×75mm
	Power adapter	12VDC 4A
	Power consumption	< 0.7A
Environmental	Operating temperature	0°C ~ 50°C
	Humidity	10 ~ 90% RH, non condensing
Dimensions	Outline dimension (mm)	254(W)×232(H)×27(D)
	Weight	-

Dimensions

Unit: mm (inch)

