

INTELLIGENT WIRE-FREE



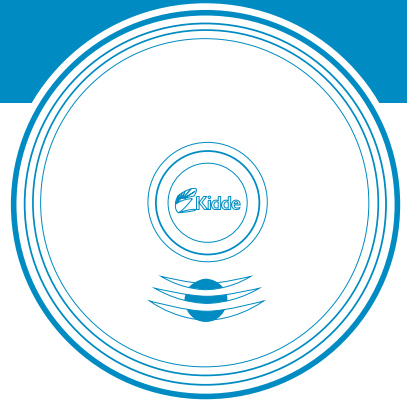
Smoke Alarm User Guide

Photoelectric Smoke Alarm
with Voice and Wireless Interconnect – Battery Operated

Model P4010DCS-W
Model P4010LDCS-W (Safety Light)

WIRE-FREE INTERCONNECT:

You do NOT need a home wi-fi system to use these units. Multiple wireless units create their own independent wireless alarm network.



SIGNALING



SMOKE ALARM

- 10-YEAR SEALED LITHIUM BATTERY
- WIRE-FREE INTERCONNECT
- VOICE ALARM

Thank You for Purchasing this Kidde Smoke Alarm

These models are powered by a non-replaceable, long life sealed lithium battery system, and include SMART HUSH® Control to temporarily silence nuisance alarms. They are capable of Wireless Interconnect.



READ SECTION 9: Activation And Wireless Alarm Network, before powering the units. You do NOT need a home wi-fi system to use these units. Multiple wireless units create their own independent wireless alarm network.

Teach children how to respond to the alarm and that they should never play with the unit. Your Kidde Smoke Alarm was designed for use in a residential environment. It is not designed for use in a recreational vehicle (RV) or boat.

NOTE: Please thoroughly read this user guide and save the document for future reference and to pass on to any subsequent owner.

The National Fire Protection Association (NFPA) and the manufacturer recommend replacing this alarm ten years from the date code on back of alarm.

Product Support: 800-880-6788

Please write down the below information and have this at hand when you call.

Model (on back): _____

Date Code (on back): _____

Date of Purchase: _____

Where Purchased: _____

Date to Replace: _____

Contents

1. Smoke Alarm: What To Do When The Alarm Sounds	4
2. Carbon Monoxide Alarm: What To Do When The Alarm Sounds	5
3. Other Alarm Visual And Audible Indicators	6
4. Troubleshooting Guide	7
5. Introduction, Product Features & Specifications	10
6. Limitations Of Smoke Alarms	11
7. Recommended Locations For Smoke Alarms	12
8. Locations To Avoid	14
9. Activation And Wireless Alarm Network	15
9.1 Setting Up A Wireless Alarm Network.	16
9.2 Adding Another Device to an Existing Wireless Alarm Network	18
9.3 Resetting a Device's Wireless Settings	20
10. Operation and Testing	21
11. Recognizing Nuisance Alarms	22
12. Battery	24
13. Permanently Disable Alarm / Discharge Battery.	25
14. Cleaning Your Alarm	26
15. Good Safety Habits	27
16. Service And Warranty	30

1. Smoke Alarm: What To Do When the Alarm Sounds

The smoke alarm pattern is three long beeps with voice “Fire!,” a 1.5 second pause, and three long beeps repeating. The red LED blinks in time with the alarm pattern.

- Alert small children in the home as well as anyone else that might have difficulty recognizing the importance of the alarm sounding or that might have difficulty leaving the area without help.
- Leave immediately by your escape plan. Every second counts, so don't waste time getting dressed or picking up valuables.
- While leaving, don't open any inside door without first feeling its surface. If hot, or if you see smoke seeping through cracks, don't open that door! Instead, use your alternate exit. If the inside of the door is cool, place your shoulder against it, open it slightly and be ready to slam it shut if heat and smoke rush in.
- If the escape route requires you to go through smoke, stay close to the floor where the air is cleaner. Crawl if necessary, and breathe shallowly through a cloth, wet if possible.
- Once outside, go to your selected meeting place and make sure everyone is there.
- Call the fire department from your cell phone outside, or from your neighbor's home-not from yours!
- Don't return to your home until the fire officials say that it is all right to do so.
- There are situations where a smoke alarm may not be effective to protect against fire as stated in the NFPA Standard 72. For instance:
 - a) smoking in bed
 - b) leaving children home alone
 - c) cleaning with flammable liquids, such as gasoline

NOTE: See Section RECOGNIZING NUISANCE ALARMS, for nuisance alarm situations.

2. Carbon Monoxide Alarm: What To Do When the Alarm Sounds

NOTE: This is not a carbon monoxide (CO) alarm, but will receive and transmit a CO alarm signal (with voice message) from an interconnected CO or combination smoke/CO alarm.

The carbon monoxide (CO) alarm pattern is four quick beeps with voice “Warning! Carbon Monoxide” repeating every 5 seconds. The red LED blinks in time with the alarm pattern.

⚠ WARNING: CARBON MONOXIDE ALARM ACTIVATION INDICATES THE PRESENCE OF CARBON MONOXIDE (CO) AT HIGH CONCENTRATIONS WHICH CAN KILL YOU.

- 1) Operate the Test/Hush button. **NOTE:** Pressing the button on the initiating alarm unit (green LED flashing every second) will silence the alarm notification, including all interconnected units. If the unit goes into alarm mode again within six minutes, it is sensing high levels of CO which can quickly become a dangerous situation.
- 2) Call your emergency services (Fire Department or 911). **EMERGENCY PHONE #:** _____
- 3) Immediately move to fresh air — outdoors or by an open door / window. Do a head count to check that all persons are accounted for. Alert small children in the home as well as anyone else that might have difficulty recognizing the importance of the alarm sounding or that might have difficulty leaving the area without help. Do not reenter the premises or move away from the open door/window until the emergency services responders have arrived, the premises have been aired out, and your alarm remains in its normal condition.
- 4) After following steps 1-3, if the alarm reactivates within a 24 hour period, repeat steps 1-3 and call a qualified appliance technician to investigate sources of CO from fuel burning equipment and appliances, and to inspect for proper operation of equipment.

If problems are identified during this inspection, have the equipment serviced immediately. Note any combustion equipment not inspected by the technician and consult the manufacturer's instructions, or contact the manufacturer directly for more information about CO safety and the equipment. Make sure that motor vehicles are not, or have not been, operating in a garage attached or adjacent to the residence. Never restart the source of a CO problem until it has been corrected. Never ignore the sound of the alarm! **NOTE:** See Section RECOGNIZING NUISANCE ALARMS, for nuisance alarm situations.

3. Other Alarm Visual and Audible Indicators

Operational Mode	Visual Indications	Audible Indications	Action/Note:
Normal (standby)	Green LED blink approx every 60 sec.		
Test (button press when no alarm condition is present)	<ul style="list-style-type: none"> • 4 patterns of Red/Amber/Green. • Test: Red LED blinks in time with alarm pattern. Safety light will briefly illuminate on model P4010LDCS-W. • Green LED fade on/off at test complete 	<ul style="list-style-type: none"> • Button press sound • Voice: "Testing, this is very loud. Press now to cancel test. 5, 4, 3, 2, 1." • 3 long beeps, Voice "Fire!", 3 long beeps, Voice "Test Complete," Power on/reset sound. • Voice "Test Canceled" if button pushed before test sequence begins. 	<p>Perform Test/Hush button press once a week to verify proper alarm operation</p> <p>* Push/release button before the countdown ends to cancel test.</p>
Smoke Alarm Memory (unit has experienced a smoke alarm event within the last hour)	Red and Amber LED alternate on 1 sec, every 10 sec.	After button push: Voice "Smoke previously detected" only on the initiating alarm unit.	Push test button to clear Alarm Memory. NOTE: standard test sequence will follow. (Push/release button again to cancel test).
Smoke Alarm Hush Mode, (SMART HUSH* CONTROL)	Red LED blinks every 2 sec.	<p>After button push: Voice "Hush Mode Activated."</p> <p>Smoke alarm pattern stops.</p> <p>(If there is too much smoke to allow Hush: Voice "Too Much Smoke, Alarm cannot be Hushed" Smoke alarm pattern continues.)</p>	This feature is to be used only when a known alarm condition, such as smoke from cooking, activates the alarm.
Locate	None	After button push on non-initiating unit, only initiating unit continues alarm pattern.	Use this to quickly locate the alarm source and determine if alarm is nuisance or real.
Smoke Alarm Hush Mode Canceled	None	Voice "Hush Mode Canceled."	When smoke levels drop below the alarm threshold, the voice message "Hush Mode Canceled" will occur.
Initiating Alarm, (Multiple alarms in an interconnected system)	Green LED blinks once per sec indicating that this is the unit initiating the alarm in an interconnected, multiple alarm, system.	Unit in Smoke Alarm mode.	During alarm, the initiating alarm red blink will be interrupted by a green blink.

4. Troubleshooting Guide

Trouble Condition	Visual Indications	Audible Indications	Action:
Low Battery	Amber LED blinks every 5 seconds	Chirp every 60 sec, voice every 30 sec: "Replace alarm." Voice stops after 5 mins.	*Remove, discharge, dispose unit, and replace as soon as possible.
Fault Mode		Chirp every 30 sec. Voice every 30 sec: "Error, see trouble shooting guide" After 5 mins: no voice message	*See Cleaning Your Alarm section. * Push Test/Hush button once to attempt to reset the unit. *Red LED will blink out an error code (number of blinks) when Test/Hush button is push/released once. Report the number of blinks to customer service if needed.
End of Unit Life		Double chirp every 30 sec. First 5 mins: Voice every 30 sec: "Replace alarm, press button to temporarily silence." Voice stops after 5 mins. After 7 days: Chirps continue. Voice every 30 sec for 5 mins: "Replace alarm."	* Push/release Test/Hush button to temporarily silence (see End of Unit Life Hush Mode section below) * Remove, discharge, dispose unit, and replace as soon as possible.
End of Unit Life Hush Mode (after push/release Test/Hush button during End of Life)		Voice "Temporarily Silenced." End of Unit Life chirps silenced for 24 hrs. (7 days after End of Unit Life chirps begin, the chirps cannot be silenced.)	* Remove, discharge, dispose unit, and replace as soon as possible.
Network Error		Chime every 30 secs. Voice every 30 sec: "Connection lost, press button to temporarily silence." After 5 min: no voice messages (Note: network must have 3 or more alarms for voice messages.)	See next page for Network Error troubleshooting tips.
Network Error Hush (after button push during Network Error)		Voice "Temporarily Silenced."	

If you require further information please contact Product Support at 1-800-880-6788 or write us at: Kidde, 1016 Corporate Park Drive, Mebane, NC 27302. Our internet address is www.kidde.com.

Network Error Troubleshooting Tips

If you have a unit (or units) in network error and you would like to silence them, you can push and release the Test/Hush button once on each unit in network error to silence them for 24 hours at a time. NOTE: when you do this, the red LED will blink out an error code (number of blinks) when the Test/Hush button is push/released once. If the following steps are unsuccessful, it might be helpful to report the number of blinks to customer service.

Fix 1:

NOTE: If there is only one unit that is giving you trouble, rotating the alarm on the mounting plate may re-orient the wireless antenna and fix the problem.

1. Press and hold the button on a known working unit (not the unit in network error) for 4-5 seconds until you hear 2 beeps.
2. Go to the room/location of the unit in network error.
3. Rotate the network error unit 90 degrees in either direction on the mounting plate.
4. Press and hold the button on the network error unit for 4-5 seconds until you hear 2 beeps.
5. Within 10 seconds, the network error unit should re-join the wireless network and should show fading green lights, with a voice "Success, now connected." If this is the case, press and hold the button on the same unit for 4-5 seconds until 2 beeps are heard.

NOTE: If the unit does not re-join the wireless network, press and hold the button on a known working unit (not the unit in network error) for 4-5 seconds. Then proceed to "Fix 2."

Fix 2:

NOTE: In a wireless alarm network, there is a Coordinator unit, which controls communication to the other units, which are called "RFDs". For best wireless range, the Coordinator should be located in a central location of the household.

If "Fix 1" does not work or if there are multiple units in network error, the following steps will place the Coordinator of the wireless network at the center of the household.

1. Go to a wireless unit that seems closest to the center of the house.
2. If this unit is not in network error, press and hold the button on that unit for 4-5 seconds until you hear 2 beeps, and a voice "Searching for other devices," as well as a sonar ping sound. If it is in network error go to "Fix 3" below.
3. You will now need to locate the Coordinator of the system.
 - a. The Coordinator will be fading green on/off every 2 seconds. The RFDs of the system will be fading green on/off every 4 seconds.
 - b. The wireless network will stay open for 15 minutes. If the wireless network closes, press and hold the button on any known working wireless unit for 4-5 seconds until 2 beeps are heard, followed by voice "Searching for other devices," as well as a sonar ping sound, to re-open the wireless network.

4. Once you have located the Coordinator of the wireless network, take the Coordinator down and swap it with the unit that was deemed to be in the center of the house (found in steps 1 and 2).
5. Go to each unit that is in network error and press/hold the button on that unit for 4-5 seconds until you hear 2 beeps.
 - a. The unit should join back to the wireless network, with voice "Success, now connected." The lights on the unit should flicker once and then fade green on/off every 4 seconds. If this is the case, press/hold the button on any unit to close the wireless network.
 - b. If the unit doesn't join the network, rotate the unit 90 degrees in either direction.
 - c. If the unit still hasn't joined the network, press and hold the button on a known working unit for 4-5 seconds to close the wireless network and then proceed to "Fix 3."

Fix 3:

If "Fix 2" did not work, use this fix. The following steps will reset the entire wireless alarm network and place the Coordinator at the center of the household.

1. Remove all wireless units from their installed locations and place them onto a table.
2. Reset all the units one by one by pressing and holding the button for 8-9 seconds until you hear 3 beeps and a voice "Resetting wireless settings."

NOTE: if resetting the units doesn't result in the voice message "Ready to connect, follow quick start instructions," the unit needs to be replaced with a new one.
3. Create a new wireless alarm network by pressing and holding the button on any unit for 4-5 seconds until you hear 2 beeps, and voice, "Searching for other devices" with a sonar ping. Keep track of this unit, as it will become the Coordinator of your wireless alarm network.
4. Wait for the other units to join the new wireless network. Each unit will announce "Success, now connected."
5. After each unit has joined, press/hold the button for 4-5 seconds on the Coordinator unit.
6. Take the same unit (Coordinator) and install it closest to the center of the household.
 - a. Example 1: For a 2 floor house, install the unit on the main floor near the center of the main floor.
 - b. Example 2: For a 3 floor house, install the unit on the middle floor near the center of the middle floor.
7. Install the rest of the units around the house (you may place units in any location as instructed by this user guide).

If the network error persists after these attempted fixes, remove the unit, discharge it, and replace it with a new unit as soon as possible. Contact customer service.

5. Introduction, Product Features and Specifications

Introduction

This alarm detects products of combustion using photoelectric technology. Ten (10) years after the unit was installed, this unit will automatically alert you that it is time to replace the unit. This is called “End of Unit Life” mode. See Troubleshooting Guide.

To help identify the date to replace the unit, a label has been affixed to the side of the alarm. Write the “Install date” in the space provided, and then write in the “Replace by” date (10 years from initial power up) in permanent marker on the label prior to installing the unit.

Product Features and Specifications:

- Temperature: Operating Range: 40°F (4.4°C) to 100°F (37.8°C)
- Humidity: Operating range: up to 95% RH non-condensing
- Audible Alarm: 85+ dB at 10' @ 3.0 to 3.5 KHz pulsing alarm, with voice message “Fire!”

NOTE: This is not a CO alarm, but it will receive and transmit a CO alarm signal (with voice message “Warning! Carbon Monoxide”) from an interconnected CO or combination smoke/CO alarm.

- Smoke Sensor: Photoelectric
- Voice message system
- Smoke Alarm SMART HUSH® Control
- Ambient Light Sensing
- Powered by 3V DC non-replaceable sealed lithium battery.
- Wireless interconnectable to other compatible alarms.
- One large, user- friendly button.
- LED safety light on model P4010LDCS-W to help illuminate escape pathways.

6. Limitations of Smoke Alarms

WARNING: PLEASE READ CAREFULLY AND THOROUGHLY

- Life safety from fire in residential occupancies is based primarily on early notification to occupants of the need to escape, followed by the appropriate egress actions by those occupants.
- Fire warning systems for dwelling units are capable of protecting about half of the occupants in potentially fatal fires. Victims are often intimate with the fire, too old or young, or physically or mentally impaired such that they cannot escape even when warned early enough that escape should be possible. For these people, other strategies such as protection-in-place or assisted escape or rescue are necessary.
- Leading authorities recommend that both ionization and photoelectric smoke alarms be installed to help insure maximum detection of the various types of fires that can occur within the home. Ionization sensing alarms may detect invisible fire particles (associated with fast flaming fires) sooner than photoelectric alarms. Photoelectric sensing alarms may detect visible fire particles (associated with slow smoldering fires) sooner than ionization alarms.
- A battery powered alarm must have a battery of the specified type, in good condition and installed properly (this model has a sealed battery).
- Smoke alarms must be tested regularly to make sure the battery and the alarm circuits are in good operating condition.
- Smoke alarms cannot provide an alarm if smoke does not reach the alarm. Therefore, smoke alarms may not sense fires starting in chimneys, within walls, on roofs, on the other side of a closed door or on a different floor.
- If the alarm is located outside the bedroom or on a different floor, it may not wake up a sound sleeper.
- The use of alcohol or drugs may also impair one's ability to hear the smoke alarm. For maximum protection, a smoke alarm should be installed in each sleeping area on every level of a home.

This alarm is not intended to alert hearing impaired individuals.

7. Recommended Locations for Smoke Alarms

- Locate smoke alarms in all sleeping areas. Try to monitor the exit path as the bedrooms are usually farthest from the exit. If more than one sleeping area exists, locate additional alarms in each sleeping area.
- Locate additional alarms in stairways, because stairways act like chimneys for smoke and heat.
- Locate at least one alarm on every floor level.
- Locate an alarm in every bedroom.
- Locate an alarm in every room where electrical appliances are operated (i.e. portable heaters or humidifiers).
- Locate an alarm in every room where someone sleeps with the door closed. The closed door may prevent an alarm not located in that room from waking the sleeper.
- Smoke, heat, and combustion products rise to the ceiling and spread horizontally. Mounting the smoke alarm on the ceiling in the center of the room places it closest to all points in the room. Ceiling mounting is preferred in ordinary residential construction.

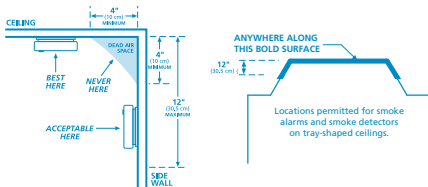


Figure 7-A

NFPA 72 states: "Smoke alarms in rooms with ceiling slopes greater than 1 ft in 8 ft (.3m in 2.4 m) horizontally shall be located on the high side of the room." NFPA 72 states: "A row of detectors shall be spaced and located within 3 ft (0.9m) of the peak of the ceiling measured horizontally."

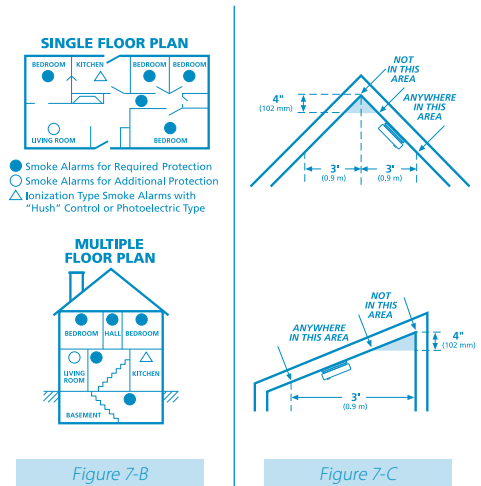


Figure 7-B

Figure 7-C

- For mobile home installation, select locations carefully to avoid thermal barriers that may form at the ceiling. For more details, see MOBILE HOME INSTALLATION section.
- When mounting an alarm on the ceiling, locate it at a minimum of 4" (10 cm) from the side wall.
- When mounting the alarm on the wall, use an inside wall with the top edge of the alarm at a minimum of 4" (10 cm) and a maximum of 12" (30.5 cm) below the ceiling.
- Put smoke alarms at both ends of a bedroom hallway or large room if the hallway or room is more than 30 feet (9.1 m) long.
- Install Smoke Alarms on sloped, peaked or cathedral ceilings at or within 3ft (0.9m) of the highest point (measured horizontally).

This equipment should be installed in accordance with the National Fire Protection Association's 72 (National Fire Protection Association, Batterymarch Park, Quincy, MA 02269).

Mobile Home Installation

Modern mobile homes have been designed and built to be energy efficient. Install smoke alarms as recommended above. In older mobile homes that are not well insulated compared to present standards, extreme heat or cold can be transferred from the outside to the inside through poorly insulated walls and roof. This may create a thermal barrier which can prevent the smoke from reaching an alarm mounted on the ceiling. In such units, install the smoke alarm on an inside wall with the top edge of the alarm a minimum of 4" (10 cm) and a maximum of 12" (30.5 cm) below the ceiling.

If you are not sure about the insulation in your mobile home, or if you notice that the outer walls and ceiling are either hot or cold compared to the room air temperature, install the alarm on an inside wall. NFPA 72 (National Fire Protection Association) requires smoke alarms be installed in each sleeping area.

 WARNING: TEST YOUR ALARM OPERATION AFTER MOBILE HOME HAS BEEN IN STORAGE OR UNOCCUPIED, AND AT LEAST ONCE A WEEK DURING USE.

8. Locations to Avoid

- In the garage. Products of combustion are present when you start your automobile.
- Normal cooking may cause nuisance alarms. If a kitchen alarm is desired, it should have an alarm silence feature or be a photoelectric type.
- Do not install within 6 ft. of heating or cooking appliances.
- Less than 4" (10cm) from the peak of an "A" frame type ceiling.
- In an area where the temperature may fall below 40°F or rise above 100°F, such as garages and unfinished attics.
- In dusty areas. Dust particles may cause nuisance alarms or a failure to alarm.
- In very humid areas (above 95% RH, non-condensing), as moisture or steam can cause nuisance alarms.
- In insect-infested areas.
- Smoke alarms should not be installed within 3 ft (.9m) of the door to a bathroom containing a tub or shower, forced air supply ducts used for heating or cooling, ceiling or whole house ventilating fans, or other high air flow areas.
- Near lights. Electronic "noise" generated by the electronics may cause nuisance alarms.
- Do not install near vents, flues, or chimneys.
- Do not install near fans, doors, windows or areas directly exposed to the weather.

NOTE: Smoke alarms are not to be used with detector guards unless the combination (alarm and detector guard) has been evaluated and found suitable for that purpose.

9. Activation and Wireless Alarm Network

Upon initial power being applied (from rotating onto mounting plate or moving the red activation wheel to the "ON" position - see Figure 9.1-B) these units are ready to connect to a network.

NOTE: At any time during wireless alarm setup, if you have a problem, you can push and hold the Test/Hush button on any problem unit until you hear three (3) beeps (approx 8 sec), and then release the button. The unit will reset the unit's wireless settings (described in Section 9.3). Once wireless settings are reset, the unit will prompt the user to follow Quickstart instructions.

NOTE: Wireless units will emit a series of LED blinks, tones, and voices as the unit(s) search for a wireless alarm setup. If you are intending to use wireless units without the wireless function, ignore these notifications, and the wireless function will eventually turn off. You can turn the wireless function on again at a later date if desired. See Section 9.2.

NOTE: The battery activation is a one-time feature. After activation, the battery cannot be turned off, and can only be discharged at the end of product life. If the alarm is removed from the mounting plate, the battery will remain active. See Permanently Disable Alarm / Discharge Battery section.

Wireless

These models have wireless alarm interconnect capability. When one interconnected unit sounds an alarm, all other compatible wireless units in the wireless alarm network will alarm.

COMPATIBLE WIRELESS INTERCONNECT UNITS

AC Models: P4010ACSCO-W, P4010LACS-W, P4010ACS-W

DC Models: P4010LDCS-W, P4010DCS-W, P4010DCSCO-W

- A maximum of 24 Kidde Safety devices may be interconnected in a multiple station arrangement. The interconnect system should not exceed the NFPA interconnect limit of 12 smoke alarms and/or 18 alarms total (smoke, CO, Smoke/ CO Combination, heat, etc.). With 18 alarms interconnected, it is still possible to interconnect up to a total of 6 remote signaling devices and /or relay modules.
- Maximum distance between wireless interconnect models is greater than 300 feet in open air.

9.1 Setting Up a Wireless Alarm Network

Creating an interconnected wireless alarm network is a simple process, with intelligent “self-enrollment” features and user-friendly voice prompts.

A. REMOVE ALL DEVICES FROM THEIR PACKAGING

B. POWER UP ALL DEVICES

- Locate the red wheel on the back of the device. Turn the red wheel to the “ON” position on ALL devices using the white tool included with the Quick Start Guide, or a standard screwdriver.
- Once powered, the light rings will glow red and voice message will announce, “Ready to connect. Follow Quick Start instructions.”

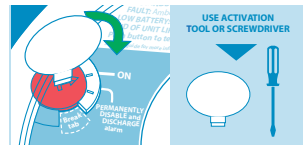


Figure 9.1-B

NOTE: *If no further steps are taken within 15 minutes of initial power up, a voice prompt, “No devices found, not connected” will be heard once, and the wireless function will turn off. The unit will then perform as a standard stand alone alarm. See Section 9.3 for re-activating wireless.*

C. PICK ONE DEVICE

NOTE: *This chosen device will be the “Coordinator” of the wireless alarm network. Keep this unit separated from the others. For best results, after wireless setup is complete, install the Coordinator in a central location.*

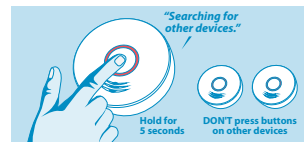


Figure 9.1-C

Press and hold the button on only the Coordinator until you hear two beeps. Release button. You will hear “Searching for other devices”.

- The light will pulse and device will sound a continuous “Sonar” ping until step E is complete.

D. RELAX AND WAIT

NOTE: For reference, these non-Coordinator units are called “RFDs.”

Wait until all other devices (RFDs) have connected to the network. Once connected, each device will speak, “Success now connected!”

- Once connected, the lights will glow green.

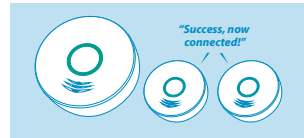


Figure 9.1-D

E. PICK ONE DEVICE

Press and hold the button on only ONE device until you hear 2 beeps. Release button. “Sonar” ping will stop.

- Device will announce that setup is complete and the number of connected devices.



Figure 9.1-E

F. WIRELESS SETUP COMPLETE!

If all devices flash green and “Sonar” ping has stopped, the devices are now connected. Congratulations!

IMPORTANT: If for some reason, you forget which unit is the Coordinator, follow these simple steps to re-confirm the Coordinator and the RFD units.

1. Press and hold the button on any unit for 4-5 seconds until 2 beeps are heard. Release button.
2. Observe the LED ring on each unit. The Coordinator will be fading green on/off every 2 seconds. The RFDs will be fading green on/off every 4 seconds.
3. After confirming the Coordinator, press and hold the button on any unit for 4-5 seconds until 2 beeps are heard.

G. SELECT LOCATION AND INSTALL ALARM

After selecting the proper location for your alarm, attach the mounting bracket to the wall or ceiling. To ensure aesthetic alignment of the alarm with the hallway, or wall, the “A” line on the mounting bracket must be parallel with the hallway when ceiling mounted, or horizontal when wall mounted.

- Install the alarm fully on the mounting bracket by rotating the alarm in a clockwise direction.

NOTE: The alarm will mount to the bracket in 4 positions (every 90 degrees).

The alarm is now activated! After installation / activation, test your alarm as described in Operation and Testing section.

⚠ WARNING: FAILURE TO PROPERLY INSTALL AND ACTIVATE THIS ALARM WILL PREVENT PROPER OPERATION OF THIS ALARM AND WILL PREVENT ITS RESPONSE TO FIRE HAZARDS.

9.2 Adding Another Wireless Device to an Existing Wireless Alarm Network

For various reasons, you might want to add additional units to your existing wireless alarm network. Modifying your existing wireless alarm network is easy and user-friendly.

A. REMOVE THE NEW DEVICE FROM ITS PACKAGING.

B. POWER UP NEW DEVICE

Locate the red wheel on the back of the device being added. Turn the red wheel to the “ON” position using the white activation tool included in the Quick Start Guide or a standard screwdriver.

- Once powered, the light ring will glow red.

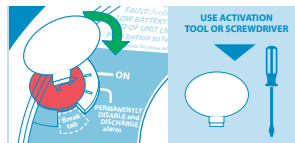


Figure 9.2-B

C. PICK ONE INSTALLED DEVICE

Press and hold the button on ONE INSTALLED device on your network until you hear two beeps. Release button. You will hear “Searching for other devices.”

- Light will pulse green and device will sound a continuous “Sonar” ping until step E is completed.



Figure 9.2-C

D. RELAX AND WAIT

Wait until the new device has connected to the network. Once connected, the new device will speak, “Success now connected!”

- Once connected, the light ring will glow green.



Figure 9.2-D

E. PICK THE INSTALLED DEVICE

Press and hold the button on the INSTALLED device for 5 SECONDS until you hear two beeps. Release button. "Sonar" ping will stop.

- Device will announce that setup is complete and the number of connected devices.



Figure 9.2-E

G. SELECT LOCATION AND INSTALL ALARM.

After selecting the proper location for your alarm, attach the mounting bracket to the wall or ceiling. To ensure aesthetic alignment of the alarm with the hallway, or wall, the "A" line on the mounting bracket must be parallel with the hallway when ceiling mounted, or horizontal when wall mounted.

- Install the alarm fully on the mounting bracket by rotating the alarm in a clockwise direction.

NOTE: The alarm will mount to the bracket in 4 positions (every 90 degrees).

The alarm is now activated! After installation / activation, test your alarm as described in Operation and Testing section.

⚠ WARNING: FAILURE TO PROPERLY INSTALL AND ACTIVATE THIS ALARM WILL PREVENT PROPER OPERATION OF THIS ALARM AND PREVENT ITS RESPONSE TO FIRE HAZARDS.

9.3 Resetting a Device's Wireless Settings

If you encounter an issue at any point during the wireless network setup process, you may reset the device by following the directions below.

A. BEGIN RESET

Press and hold the button on the device for 8-9 seconds until you hear 3 beeps. Release button. You will hear the words "Resetting wireless settings."



Figure 9.3-A

B. CONCLUDE RESET

Light ring will flash green once and then it will pulse red. You will hear the words, "Ready to connect, follow quick start instructions."

- Device has been reset.
- See Section 9.1 to begin set-up of a new wireless alarm network, or Section 9.2 for adding this device to an existing alarm network.



Figure 9.3-B

NOTE: *If no further steps are taken within 15 minutes of resetting the unit's wireless settings, a voice prompt "No devices found, not connected" will be heard once, and the wireless function will turn off. The unit will then perform as a stand alone alarm. See Section 9.2 for adding this device to an existing alarm network.*

10. Operation and Testing

Operation

The alarm is operating once it is activated and testing is complete. When products of combustion (smoke) are sensed, the unit sounds a loud alarm with voice messages. See Sections 1 and 2 for alarm signal descriptions.

Testing

Test your alarm weekly by pressing and releasing the test button quickly. A quick beep will confirm the button has been pushed followed by voice prompts that will inform you of the upcoming test sequence. See Other Alarm Visual and Audible Indicators table. The alarm and voice (and any interconnected units) will sound if the electronic circuitry, horn, speaker, and battery are working. If the alarm or voice does not sound, or gives erratic or low volume sound, the unit must be replaced. See Permanently Disable Alarm / Discharge Battery section to determine how to prepare the unit for shipment or disposal.

 WARNING: DUE TO THE LOUDNESS OF THE ALARM, ALWAYS STAND ABOUT 2.5 FEET AWAY FROM THE UNIT OR USE EAR PROTECTION WHEN TESTING.

 WARNING: DO NOT USE AN OPEN FLAME TO TEST YOUR ALARM, YOU COULD DAMAGE THE ALARM OR IGNITE COMBUSTIBLE MATERIALS AND START A STRUCTURE FIRE.

Ambient Light Sensing

This unit samples the ambient light conditions of the alarm's location and, if possible, determines a Night / Day cycle. A valid Night / Day cycle will delay unit chirps during the night until the next Day cycle begins.

Chirping

When chirping begins during the next Day cycle, you can temporarily silence End of Unit Life or Network Error chirps by pressing the Test/Hush button. Low Battery chirps cannot be silenced.

POSSIBLE CHIRPING REASONS

End of Unit Life: will be delayed at night
Network Error: will be delayed at night
Low battery: will be delayed at night

If a valid Night / Day cycle has not been established because the unit is located in either a constantly dark or lighted location, the chirps mentioned above will not be delayed at night. Moving the unit to a different location might allow the unit to determine a valid Night / Day cycle.

⚠ WARNING: REPLACE UNIT AS SOON AS POSSIBLE WHEN IN END OF UNIT LIFE OR LOW BATTERY MODE.

11. Recognizing Nuisance Alarms

Smoke Nuisance

HUSH®: If you know why the alarm is sounding, and you can verify that it is not a life threatening situation, you can push the button on the initiating unit (green LED flashing every second) to silence the alarm for 8-10 minutes. If the smoke is not too dense, that unit, and all interconnected units will silence. After the Hush® period, the smoke alarm will automatically reset and sound the alarm if particles of combustion are still present. You can use Hush® repeatedly until the air has been cleared of the condition causing the alarm.

NOTE: Dense smoke will override Hush® and sound a continuous alarm. If no fire is present, check to see if one of the reasons listed in "Locations to avoid" may have caused the alarm. If a fire is discovered, get out and call the fire department.


This alarm is designed to minimize nuisance alarms. Cigarette smoke will not normally cause the unit to alarm, unless the smoke is blown directly into the alarm. Combustion particles from cooking may set off the alarm if it is located too close to a cooking appliance. Large quantities of combustible particles are generated from spills or when broiling. Using the fan on a range hood which vents to the outside (non-recirculating type) will also help prevent nuisance alarms from occurring by removing these combustible products from the kitchen.

Locate

In an interconnected system (all units will be alarming together), a unit that detects smoke and initiates an alarm is called the "initiating alarm unit." Initiating alarm units will be flashing the Green LED every second during alarm. Depending on unit locations, and the location of the source of smoke, it is possible to have more than one initiating unit. If you suspect a nuisance alarm situation, you can use this feature to help you locate the initiating alarm unit(s) in a wireless alarm interconnect system.

Push the button on any non-initiating wireless unit, and ALL wireless units EXCEPT the initiating alarm unit(s) will silence for two minutes. You can use the LOCATE feature repeatedly until you find the initiating alarm unit(s), or the air has been cleared of the condition causing the alarm.

NOTE: Hush® and Locate features are dependent on the type of models in your interconnect system. Non-wireless models cannot receive the wireless Locate feature and will continue to alarm until the initiating unit is Hushed or the Smoke/ CO condition clears.

 WARNING: THIS UNIT DOES NOT DETECT CO, BUT IT WILL TRANSMIT A CO ALARM SIGNAL FROM AN INTERCONNECTED CO OR SMOKE/CO COMBINATION ALARM. THE LOCATE FEATURE CAN BE USED FOR CO ALARM EVENTS ALSO (PUSHING THE TEST/ HUSH BUTTON ON A COMPATIBLE INTERCONNECTED ALARM), BUT IT IS IMPOSSIBLE TO DETERMINE THE SOURCE OF A CO ALARM USING SIGHT OR SMELL. ALWAYS CONSIDER A CO ALARM EVENT AS DANGEROUS.

12. Battery

NOTE: This alarm is powered by a non-replaceable, sealed lithium battery system. No battery installation or replacement is necessary for the life of the alarm.

IMPORTANT: Constant exposure to high or low humidity or temperatures may reduce battery life.

⚠ WARNING: NO SERVICEABLE PARTS INCLUDED. DO NOT ATTEMPT TO OPEN THE ALARM FOR ANY REASON! DO NOT TRY TO REPAIR THE ALARM YOURSELF.

Low Battery

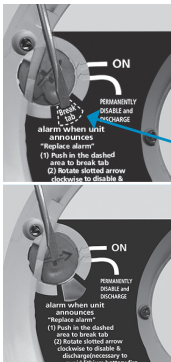
This alarm is equipped with a low battery monitor circuit. If the battery capacity can no longer provide adequate power for all alarm functions, the low battery condition will occur. See Troubleshooting Guide. The unit must be replaced within 7 days of the first occurrence of the "Low Battery Warning" to provide continuous alarm protection.

13. Permanently Disable Alarm / Discharge Battery

⚠ WARNING: FAILURE TO DISCHARGE ALARM BATTERY AS INSTRUCTED PRIOR TO DISPOSAL MAY CREATE POTENTIAL FOR LITHIUM BATTERY RELATED FIRE OR HAZARD.

⚠ WARNING: DISCHARGING THE ALARM BATTERY IS PERMANENT

- Once the alarm battery has been discharged, it cannot be reactivated!
- Once discharged, the alarm will NO LONGER DETECT SMOKE.
- Once the alarm battery is discharged, the battery is depleted and the alarm will no longer function.
- Once the alarm battery has been discharged, the alarm cannot be mounted onto the mounting plate or reactivated.



To Permanently Disable Alarm / Discharge Battery:

- Rotate the alarm counterclockwise to remove it from the mounting plate.
- Push in the dashed area with a screwdriver to break tab (Figure 13-A).
- After the tab is broken, use the screwdriver to turn the red slotted arrow to the "Permanently Disable Alarm / Discharge Battery" location. This will disable the alarm, stop the low battery or end of unit life "chirps" and render the alarm safe for disposal by draining the battery (Figure 13-B).

Figures 13-A (top) and 13-B (bottom)

14. Cleaning Your Alarm

Your Alarm Should be Cleaned at Least Once a Year

You can clean the interior of your alarm (sensing chamber) by using compressed air or a vacuum cleaner hose and blowing or vacuuming through the openings around the perimeter of the alarm. The outside of the alarm can be wiped with a damp cloth. Use only water to dampen the cloth, use of detergents or cleaners could damage the alarm.

If the alarm is in Fault mode and the Red LED is blinking a fault code of 10 or 14 flashes (after a Test/Hush button push), the alarm may be in need of cleaning. After cleaning, press the Test/Hush button. If the fault does not clear, the alarm needs to be replaced.

- Never use detergent or other solvents to clean the unit.
- Avoid spraying air freshener, hair spray, or other aerosols near the alarm.
- Do not paint the unit. Paint will seal the vents and interfere with the sensor's ability to detect smoke.
- Never attempt to disassemble the unit or clean inside. This action will void your warranty.

 WARNING: REINSTALL THE ALARM AS SOON AS POSSIBLE TO ENSURE CONTINUOUS PROTECTION.

15. Good Safety Habits

Develop and Practice a Plan of Escape

Prepare and practice a home escape plan twice a year, including drills at night. Know two ways out of every room (door & window) and identify a meeting place outside the home where everyone will gather once they have exited the residence. When two people have reached the meeting place, one should leave to call 911 while the second person stays to account for additional family members. Establish a rule that once you're out, you never re-enter under any circumstance!

- Make a floor plan indicating all doors and windows and at least two (2) escape routes from each room. Second story windows may need a rope or chain ladder.
- Have a family meeting and discuss your escape plan, showing everyone what to do in case of fire and where to meet after they leave the house.
- Ensure that small children hear the alarm and wake when it sounds. They must wake up in order to execute the escape plan. Practice allows all occupants to test your plan before an emergency. You may not be able to reach your children. It is important they know what to do.
- Familiarize everyone with the sounds of the smoke alarm and train them to leave your home when they hear it.
- Current studies have shown smoke alarms may not awaken all sleeping individuals, and that it is the responsibility of individuals in the household that are capable of assisting others to provide assistance to those who may not be awakened by the alarm sound, or to those who may be incapable of safely evacuating the area unassisted.
- Install and maintain fire extinguishers on every level of the home and in the kitchen, basement and garage. Know how to use a fire extinguisher prior to an emergency.

Fire Prevention

Never smoke in bed, or leave cooking food unattended. Teach children never to play with matches or lighters! Train everyone in the home to recognize the smoke alarm pattern and to leave the home using their escape plan when it's heard. Know how to do "Stop, Drop and Roll" if clothes catch on fire, and how to crawl low under smoke. Install and maintain fire extinguishers on every level of the home and in the kitchen, basement and garage.

NFPA (National Fire Protection Association)

Fire Safety in the Home: NFPA 72 is intended to provide reasonable safety for persons in family living units. Reasonable fire safety can be produced through the following three-point program: (1) Minimizing fire hazards (2) Providing fire-warning equipment (3) Having and practicing an escape plan.

Smoke Detection – Are More Alarms Desirable?

The required number of smoke alarms might not provide reliable early warning protection for those areas separated by a door from the areas protected by the required smoke alarms. For this reason, it is recommended that the resident consider the use of additional smoke alarms for those areas for increased protection. The additional areas include the basement, bedrooms, dining room, furnace room, utility room, and hallways not protected by the required smoke alarms. The installation of smoke alarms in attics (finished or unfinished), garages, or within 6' of a heating or cooking appliance is not normally recommended, as these locations occasionally experience conditions that can result in improper operation.

California State Fire Marshal

Early warning fire detection is best achieved by the installation of fire detection equipment in all rooms and areas of the household as follows: A smoke alarm installed in each separate sleeping area (in the vicinity, but outside the bedrooms), heat or smoke detectors in the living rooms, dining rooms, bedrooms, kitchens, hallways, attics, furnace rooms, closets, utility and storage rooms, basements and attached garages.

For your information, the National Fire Protection Association's Standard 72 reads: **Where required by other governing laws, codes, or standards for a specific type of occupancy, approved single and multiple-station smoke alarms shall be installed as follows:**

1. In all sleeping rooms and guest rooms
2. Outside of each separate dwelling unit sleeping area, within 21 ft (6.4 m) of any door to a sleeping room, with the distance measured along a path of travel
3. On every level of a dwelling unit, including basements
4. On every level of a residential board and care occupancy (small facility), including basements and excluding crawl spaces and unfinished attics
5. In the living area(s) of a guest suite
6. In the living area(s) of a residential board and care occupancy (small facility)

FCC (FCC ID: SAK25569999)

This equipment has been tested and found to comply with the limits for a Class B digital device, pursuant to part 15 of the FCC Rules. These limits are designed to provide reasonable protection against harmful interference in a residential installation. This equipment generates, uses and can radiate radio frequency energy and, if not installed and used in accordance with the instructions, may cause harmful interference to radio communications. However, there is no guarantee that interference will not occur in a particular installation. If this equipment does cause harmful interference to radio or television reception, the user is encouraged to try to correct the interference by one or more of the following measures:

- Reorient or relocate the receiving antenna.
- Increase the separation between the equipment and receiver.
- Connect the equipment into an outlet on a circuit different from that to which the receiver is connected.
- Consult the dealer or an experienced radio/TV technician for help.

 WARNING! ANY CHANGES OR MODIFICATION MADE TO THE PRODUCT WITHOUT THE PERMISSION OF THE MANUFACTURER COULD VOID THE USER'S AUTHORITY TO USE THIS PRODUCT.

This device complies with part 15 of the FCC Rules. Operation is subject to the following two conditions: (1) This device may not cause harmful interference, and (2) this device must accept any interference received, including interference that may cause undesired operation.

16. Service and Warranty

Ten-Year Limited Warranty

Kidde warrants that the enclosed alarm will be free from defects in material and workmanship or design under normal use and service for a period of ten years from the date of purchase. The obligation of Kidde under this warranty is limited to repairing or replacing the alarm or any part which we find to be defective in material, workmanship or design, free of charge, upon receiving the alarm with proof of date of purchase, postage and return postage prepaid, to Warranty Service Department, Kidde, 1016 Corporate Park Drive, Mebane, NC 27302. Before shipping the product, follow the steps in the Permanently Disable Alarm / Discharge Battery section.

This warranty shall not apply to the alarm if it has been damaged, modified, abused or altered after the date of purchase or if it fails to operate due to improper maintenance or inadequate power. Any implied warranties arising out of this sale, including but not limited to the implied warranties of description, merchantability and fitness for a particular purpose, are limited in duration to the above warranty period. In no event shall the Manufacturer be liable for loss of use of this product or for any indirect, special, incidental or consequential damages, or costs, or expenses incurred by the consumer or any other user of this product, whether due to a breach of contract, negligence, strict liability in tort or otherwise.

The Manufacturer shall have no liability for any personal injury, property damage or any special, incidental, contingent or consequential damage of any kind resulting from gas leakage, smoke, fire or explosion. Since some states do not allow limitations of the duration of an implied warranty or do not allow the exclusion or limitation of incidental or consequential damages, the above limitations or exclusions may not apply to you. While this warranty gives you specific legal rights, you may also have other rights which vary from state to state.

The above warranty may not be altered except in writing signed by both parties hereto. Your Kidde Alarm is not a substitute for property, fire, disability, life or other insurance of any kind. Appropriate insurance coverage is your responsibility.

Consult your insurance agent. Opening the unit will void the warranty.

QUESTIONS OR FOR MORE INFORMATION

Call Kidde Product Support line at **1-800-880-6788**
or contact us at www.kidde.com

Kidde

1016 Corporate Park Drive, Mebane, NC 27302

