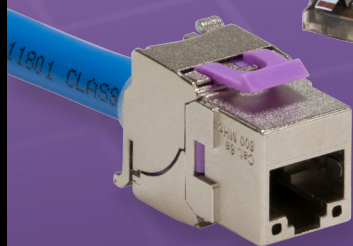
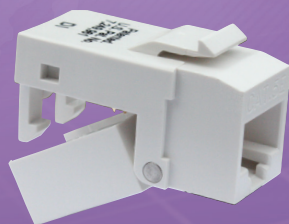


Structured Wiring

PLATINUM TOOLS®

Connectivity solutions
for your network!



Platinum Tools is known as a leader in providing products and solutions for the structured wiring networking world of data, voice and video. Our Xpress Jack™ Punchdown Tool, Keystone Jacks, Wall Plates and EZ-SnapJacks™ are the latest additions to our growing line of solutions.

Xpress Jack

- One stroke keystone jack terminations
- Designed for 110 type 4 pair keystone jacks
- Simple, one-handed operation

Keystone Jacks

- Cat3
- Cat5e
- Cat6
- Cat6A

Wall Plates

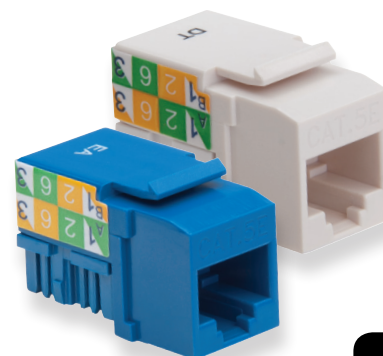
- 1 Port
- 2 Ports
- 4 Ports

EZ-SnapJacks

- Cat5e
- Cat6

Couplers

HDMI Pigtails



See
Inside



**Test Equipment
Depot**
1-800-517-8431

99 Washington Street
Melrose, MA 02176
Phone 781-665-1400 Toll
Free 1-800-517-8431

We Make Connections EZ!™

Xpress Jack and Wall Plates



13501C

Xpress Jack™ Punchdown Tool

The Xpress Jack is designed to make keystone jack terminations easier than ever. Seats and trims all 8 conductors in one simple and smooth motion. No more punching down 8 times for a single termination. Saves time and energy on both small and large jobs.

- One stroke Keystone Jack terminations
- Heavy duty all carbon steel construction
- Designed for 110 type 4 pair keystone jacks
- Rust resistant black oxide finish
- Ergonomically designed with a comfortable hand grip which reduces hand stress on large jobs
- Simple, one-handed operation
- Die set available for Platinum Tools and Leviton Keystone Jacks

P/N Description

P/N	Description
13501C	Xpress Jack w/Platinum Tools Die
13551C	Platinum Tools Replacement Die
13552C	Leviton Die

Wall Plates

- Compatible with most industry standard keystone jacks and EZ-SnapJacks
- Engineered to prevent possible fracturing from over tighten screws
- UL & RoHS compliant
- One-piece, single-gang, 4 1/2" X 2 3/4"
- Includes color matching mounting screws
- Designed to fit standard single-gang outlet boxes

Wall Plates – Installer Packs of 25

P/N	Wall Plate
600WH-25	Standard 1 Gang Blank, White
601LA-25	Standard Wall Plate 1 Port, Light Almond
601WH-25	Standard Wall Plate 1 Port, White
602LA-25	Standard Wall Plate 2 Port, Light Almond
602WH-25	Standard Wall Plate 2 Port, White
604LA-25	Standard Wall Plate 4 Port, Light Almond
604WH-25	Standard Wall Plate 4 Port, White



600WH-1

601WH-1

601LA-1

602WH-1

602LA-1

604LA-1

Keystone Jacks

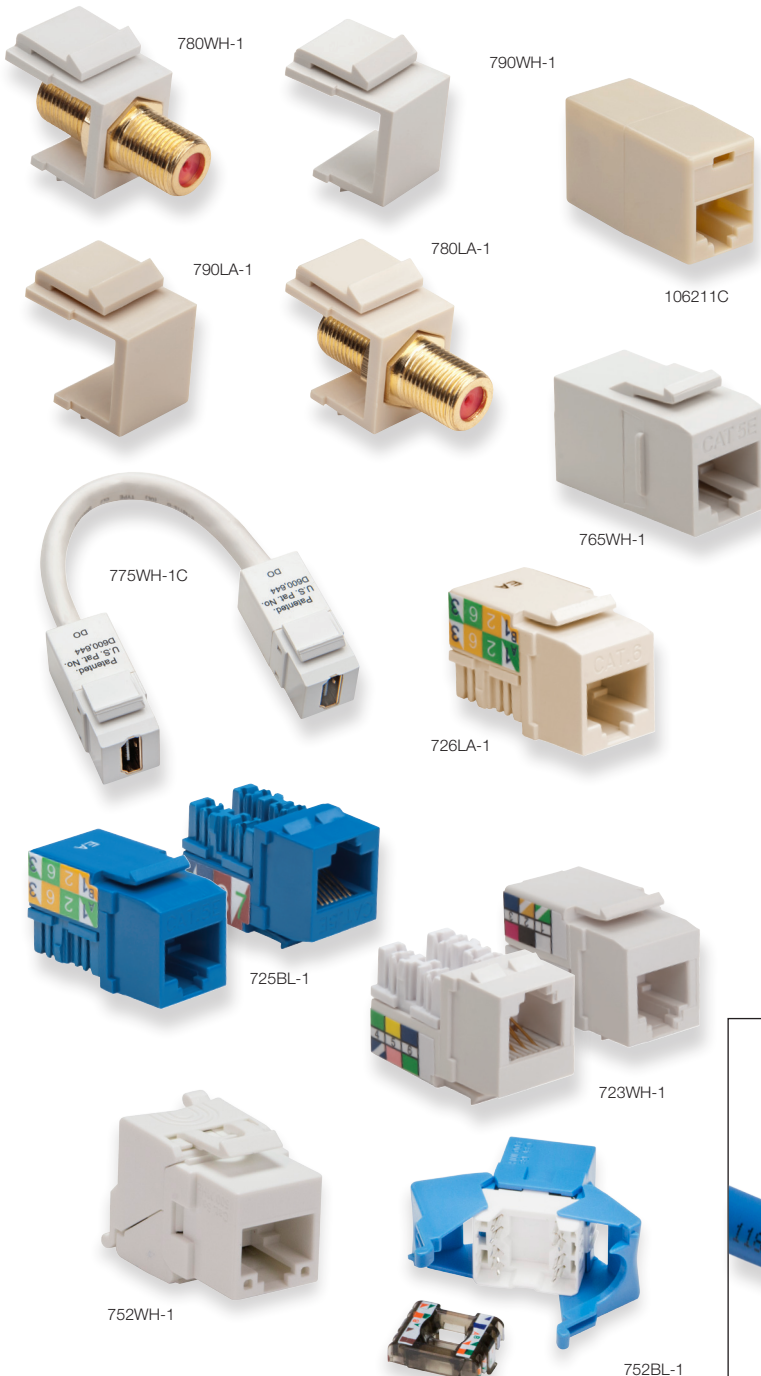
Cat3, Cat5e, Cat6, and Cat6A



726WH-1

Keystone Jacks and Couplers

- Color coded to make EIA/TIA 568A/B wiring easy
- Contacts 50 micron gold
- Meets/Exceeds EIA/TIA category standards
- Compatible with industry standard wall plates
- RoHS compliant
- UL listed



Keystone Jacks – Installer Packs of 50

P/N	Keystone
723LA-50	Keystone Cat3, 6 Pin, 110 Jack, Light Almond
723WH-50	Keystone Cat3, 6 Pin, 110 Jack, White
725BL-50	Keystone Cat5e, 110 Jack, Blue
725LA-50	Keystone Cat5e, 110 Jack, Light Almond
725WH-50	Keystone Cat5e, 110 Jack, White
726BL-50	Keystone Cat 6, 110 Jack, Blue
726LA-50	Keystone Cat 6, 110 Jack, Light Almond
726WH-50	Keystone Cat 6, 110 Jack, White
780LA-50	Keystone F - 3GHz, Light Almond
780WH-50	Keystone F - 3GHz, White

Keystone Jacks – Installer Bags of 10 (10 Pcs./Bag)

P/N	Keystone
790LA-10	Keystone Blank Insert, Light Almond
790WH-10	Keystone Blank Insert, White

Keystone Jacks – Installer Bags of 10

P/N	Keystone
765WH-10	Keystone Cat5e, Data Coupler, White

In-Line Coupling – 2 Per Clamshell

P/N	Keystone
106211C	In-Line Coupling, Light Almond

Keystone Cat6A Jacks – 1 Per Bag

P/N	Keystone
751-1	Keystone Cat6A, Tool-less, Shielded Jack
752BL-1	Keystone Cat6A, Tool-less, UTP Jack, Blue
752WH-1	Keystone Cat6A, Tool-less, UTP Jack, White

Keystone HDMI – 1 Per Clamshell

P/N	Keystone
775WH-1C	HDMI to HDMI Pigtail, White



Keystone Cat6A
Tool-less Shielded
Jack

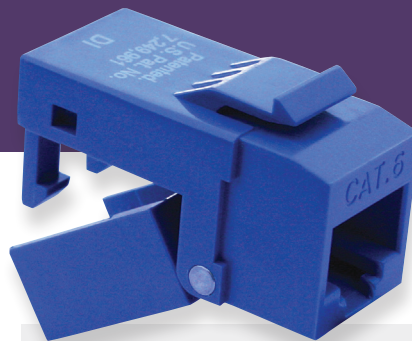
751-1
Terminated

751-1
Opened

752BL-1

We Make Connections EZ!

New & Improved Design



EZ-SnapJack™

No need for a punchdown tool when you use the EZ-SnapJack. This patented jack is self-terminating and quickly installs for professional results in a snap.

- Save time – No need for eight punch downs
- Repair damaged jacks
- EZ-SnapJacks are re-useable
- Wire guide ensures pairs stay in proper order for fast, easy termination
- Reduced tool cost, no PDT required
- Your tool bag weighs less

Application

- Available for both Cat5e and Cat6
- Designed to fit industry standard wallplates
- Commercial network installations, new or retrofit
- Home automation installations, new or retrofit

Technical Data

- F.C.C., ULC, & RoHS compliant
- 50 micro-inch selective gold plating
- Molded from UL94-VO material
- Meets/Exceeds TIA/EIA-568-B.2-1

EZ-SnapJack™ Cat5e	Bulk Bag 1 EA	Clam Pk. 4 EA	Installer Pk. 40 EA
EZ-SnapJack Cat5e, White	705WH-1	705WH-4C	705WH-40
EZ-SnapJack Cat5e, Light Almond	705LA-1	705LA-4C	705LA-40
EZ-SnapJack Cat5e, Blue	705BL-1	705BL-4C	705BL-40
EZ-SnapJack Cat5e, Ivory	705IV-1	705IV-4C	705IV-40
EZ-SnapJack Cat5e, Black	705BK-1	705BK-4C	705BK-40
EZ-SnapJack Cat5e, Yellow	705YL-1	705YL-4C	705YL-40
EZ-SnapJack Cat5e, Orange	705OR-1	705OR-4C	705OR-40

EZ-SnapJack™ Cat6	Bulk Bag 1 EA	Clam Pk. 4 EA	Installer Pk. 40 EA
EZ-SnapJack Cat 6, White	706WH-1	706WH-4C	706WH-40
EZ-SnapJack Cat6, Light Almond	706LA-1	706LA-4C	706LA-40
EZ-SnapJack Cat6, Blue	706BL-1	706BL-4C	706BL-40
EZ-SnapJack Cat6, Ivory	706IV-1	706IV-4C	706IV-40
EZ-SnapJack Cat6, Black	706BK-1	706BK-4C	706BK-40
EZ-SnapJack Cat6, Yellow	706YL-1	706YL-4C	706YL-40
EZ-SnapJack Cat6, Orange	706OR-1	706OR-4C	706OR-40

PRO-Strike™ Punchdown Tool

Combines rugged design, an ergonomic comfort grip handle and enhanced functions. The primary tool for all telecom and datacom installers working with 110, 66, Krone and BIX™ style cross connects. This professional tool will provide precise, repeatable and reliable terminations that helps ensure installations pass certification and your peace-of-mind.



Punchdown Blades and Accessories

P/N	Blades
13003C	Punchdown Blade, 630 Style
13022C	Punchdown Extension Tool
13023C	Punchdown Blade, BIX™ Style
13024C	Punchdown Blade, Krone Style
13031C	Punchdown Blade, NEVERDull™, 110/66 Style
13032C	Punchdown Blade, NEVERDull™, 110 Style
13033C	Punchdown Blade, NEVERDull™, 66 Style

Visit www.platinumtools.com for more punchdown tools.