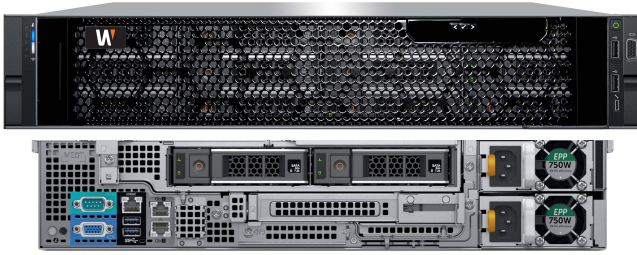


# WRR-P-S202x1 Series

Wisenet WAVE Network Video Recorder



The WRR-P-S202x1 series offers an affordable and reliable 2U rackmount solution for any entry level deployment. Up to 144TB of raw video-optimized storage is provided by 24/7 duty cycle SATA drives.

The latest Intel® Xeon® Processor allows for high powered computing power, and 16GB of DDR4 RAM provides the system resources to scale as needed.

A dedicated solid state drive for applications and the operating system enables fast boot and load times. Supports RAID 0, 1, 5, 6, and 10 storage configuration allowing for increased reliability, and a 5-year, on-site, Next Business Day, Keep Your Hard Drive warranty ensures peace of mind.

Each server is pre-configured with Wisenet WAVE VMS and preloaded with 4 Professional licenses to ensure quick and easy deployment with minimum setup time.

## Key Features

- Preloaded and configured with Wisenet WAVE video management system
- 470 Mbps of recording throughput
- Pre-configured for RAID 6
- Up to 144TB of Raw Storage
- Supports RAID 0, 1, 5, 6, 10 configurations
- SSD & 24/7 Duty Cycle SATA Drives
- IPMI Management
- Includes USB mouse and keyboard
- Includes Sliding Rack Rail with Cable Management Arm
- 5-Year, On-site, Next Business Day, Keep Your Hard Drive Warranty
- Supports Wisenet and ONVIF conformant IP cameras
- Dedicated GPU for client application for easy configuration



WRR-P-S202W1 / WRR-P-S202S1 / WRR-P-S202L1

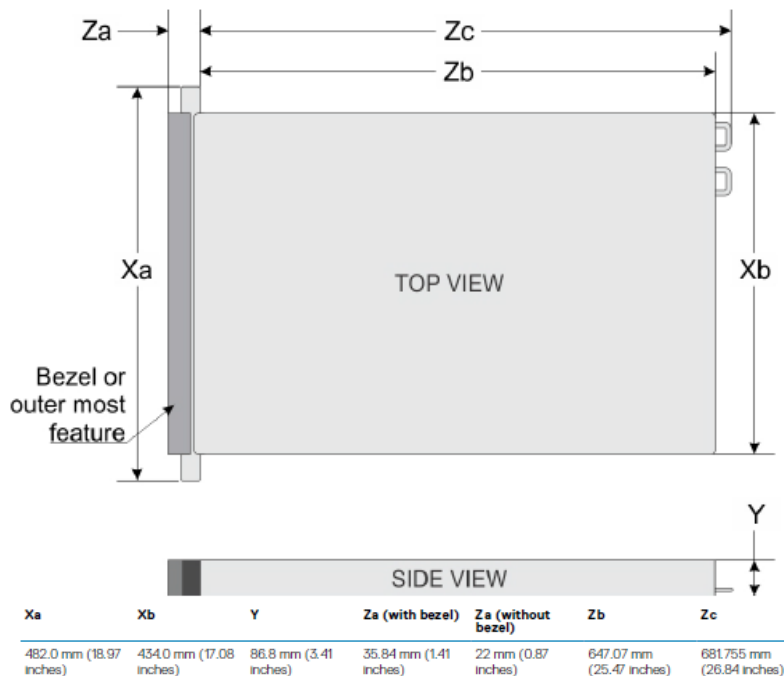
| SYSTEM                    |   |
|---------------------------|---|
| Video Management Software | Wisenet WAVE  |
| Recording Bandwidth       | Up to 470 Mbps  |
| Pre-loaded Licenses       | 4 x Wisenet WAVE Professional License                                     |
| OS Drive Bays             | 2 x 240GB Dual RAID 1 SSD (internally mounted)                            |
| Data Drive Bays           | 12 x 3.5" Front Hot Swappable Bays / 2 x 3.5" Rear Hot Swappable Bays     |
| Data Storage              | Up to 144TB raw storage   |
| RAID Support              | RAID 0, 1, 5, 6, 10, 8Gb NV Cache (RAID 6 default configuration)          |
| Network Interface         | 4 x RJ45 Gigabit Ethernet   |
| Processor                 | 1 x Intel® Xeon® Processor  |
| Memory                    | 16 GB, 2 x 8GB DDR4   |
| Operating System          | Windows 10 Professional / Windows Server 2019 Standard / Ubuntu 18.04 LTS |
| Video Outputs             | NVIDIA Quadro P400 3x MiniDisplay Port, 1 x VGA                           |
| USB Ports                 | 2 x USB 3.0 (Rear), 2 x USB 2.0 (Front), 1 x USB 3.0 (Internal)           |
| Other Ports               | Serial  |
| Keyboard & Mouse          | Included  |
| Sliding Rail Kit          | Included, with Cable Management Arm                                       |

| MECHANICAL / ELECTRICAL / ENVIRONMENTAL |                                    |   |
|---|------------------------------------|---|
| Mechanical                              | Form Factor                        | 2U rack mount chassis   |
|   | Color / Material                   | Black / Metal   |
|   | Dimensions (WxDxH)                 | 19" (482.6mm) x 28.15" (646mm) x 3.4" (86.8mm)  |
|   | Weight                             | 73 lbs. (33.1 kg)   |
| Electrical                              | Power Supply                       | (2) 750W 80 Plus Platinum   |
|   | Power Input                        | 100 ~ 240V AC   |
|   | Power Consumption                  | Maximum 788W  |
| Environmental                           | Operating Temperature              | Standard:<br>50°F ~ 95°F (10°C ~ 35°C) at 10% to 80% RH with 84.2°F maximum dew point. Refer to manual for operating temperature derating.<br>Extended:<br>40°F ~ 104°F (5°C ~ 40°C) at 5% to 85% RH with 84.2°F dew point. |
|   | Storage Temperature                | -40°F ~ 149°F (-40°C ~ 65°C)  |
|   | Operating Humidity                 | 10% to 80% RH with 84.2°F maximum dew point.  |
| Certification                           | UL, cUL, CB, FCC, 80 Plus Platinum |   |

\* Weight is on chassis without HDDs  
 \* The latest product information / specification can be found at [www.hanwhasecurity.com](http://www.hanwhasecurity.com)  
 \* Bandwidth performance figures based on performance testing by Hanwha Techwin using Wisenet WAVE

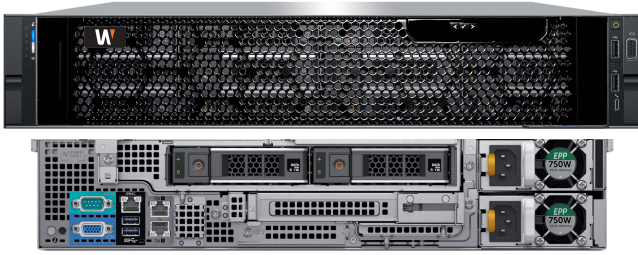
## Dimensions

Unit: inch (mm)



# WRR-P-S202x1 Series

Wisenet WAVE Network Video Recorder



\*Pre-configured for RAID 6,  
Supports RAID 0, 1, 5, 6, 10 configurations.

**EFFECTIVE STORAGE CAPACITY\***

| MODEL              | RAW STORAGE | RAID EFFECTIVE STORAGE |       |
|--------------------|-------------|------------------------|-------|
|                    |             | RAID5                  | RAID6 |
| WRR-P-S202x1-16TB  | 16TB        | 12TB                   | 7TB   |
| WRR-P-S202x1-20TB  | 20TB        | 16TB                   | 11TB  |
| WRR-P-S202x1-24TB  | 24TB        | 20TB                   | 14TB  |
| WRR-P-S202x1-28TB  | 28TB        | 24TB                   | 18TB  |
| WRR-P-S202x1-32TB  | 32TB        | 28TB                   | 22TB  |
| WRR-P-S202x1-40TB  | 40TB        | 36TB                   | 29TB  |
| WRR-P-S202x1-48TB  | 48TB        | 44TB                   | 37TB  |
| WRR-P-S202x1-64TB  | 64TB        | 56TB                   | 44TB  |
| WRR-P-S202x1-96TB  | 96TB        | 88TB                   | 74TB  |
| WRR-P-S202x1-108TB | 108TB       | 96TB                   | 78TB  |
| WRR-P-S202x1-120TB | 120TB       | 108TB                  | 89TB  |
| WRR-P-S202x1-132TB | 132TB       | 120TB                  | 100TB |
| WRR-P-S202x1-144TB | 144TB       | 132TB                  | 111TB |

\* Actual usable space is dependent on file system format and allocation size