

SPCE80TW

8", white housing, 70V, each

SPCE80TB

8", black housing, 70V, each

SPCE60W

6.5", white housing, 8 Ohms, pair

SPCE60B

6.5", black housing, 8 Ohms, pair

SPCE60TW

6.5", white housing, 70V, pair

SPCE60TB

6.5", black housing, 70V, pair

SPCE50W

5.25", white housing, 8 Ohms, pair

SPCE50B

5.25", black housing, 8 Ohms, pair

SPCE50TW

5.25", white housing, 70V, pair

SPCE50TB

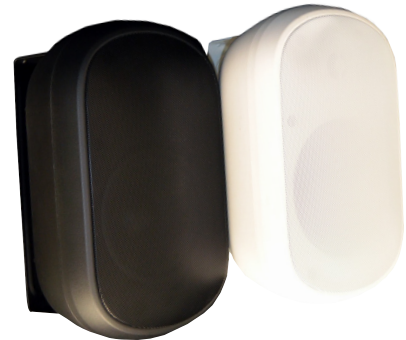
5.25", black housing, 70V, pair



Features

Contractor Elite is far from your common speaker line. Though designed with commercial applications in mind, these speakers are built with high-performance materials and features you'd find in high-end residential installations. The Contractor Elite Outdoor speaker line provides amazing sound, stylish looks, and easy installations – all for an amazing price.

- Great sound at an affordable price
- IP66 compliant, weather resistant
- Aluminum grille for extended use in outdoor environments
- "T" models come with a selectable 70V transformer
- 5 year warranty against manufacturing defects
- NDAA Compliant*



Speaker Specifications	(8" Models)	(6.5" Models)	(5.25" Models)
RMS Output Power	100W	60W	40W
Max Output Power	140W	120W	80W
Sensitivity (1W/1M)	87dB	88dB	84dB
Maximum SPL (Pmax/1M)	108dB	102dB	100dB
Impedance	8 Ohms	8 Ohms	8 Ohms
Frequency Response Range	65Hz - 20kHz	85Hz - 20kHz	90Hz - 20kHz
Driver	8" polypropylene woofer, 1" silk dome tweeter	6.5" polypropylene woofer, 1" silk dome tweeter	5.25" polypropylene woofer, .75" silk dome tweeter
Transformer Settings (for "T" Models only)	70V (100W, 50W, 25W, 12.5W, 8 Ohms)	70V (50W, 25W, 12.5W, 6W, 3W, 8 Ohms)	70V (40W, 20W, 10W, 5W, 2.5W, 8 Ohms)

Operating Specifications			
Dimensions	9.8" (L) x 7" (D) x 15.6" (H)	7.9" (L) x 6.6" (D) x 12.6" (H)	7" (L) x 5.5" (D) x 11.3" (H)
Speaker Grille Material	Aluminum	Aluminum	Aluminum

NDAA COMPLIANT

*Products are in compliance with NDAA Section 889 Part B Guidelines



close-up image of transformer and wire terminals

a-live™ Amplifier With Streaming Capability

AA1

2x80W Amplifier

Features

- 2x80W Amplifier for use with a-live™ app
- Link up to 12 a-live™ units in a single installation
- Stream same or different music from popular services to all zones
- Also stream via RCA/USB/Optical/Coax/Wireless or files on mobile device
- ESS Sabre HiFi DAC
- Line and sub outputs
- Class-D amplification
- Set your favorite playlist music as an alarm clock
- LAN connection for streaming in WiFi saturated areas
- Decoding up to 24 bit, 192KHz
- NDAA Compliant*



Specifications

Amplifier Output	2 x 80W Max
Amplifier Impedance	8 Ohms
Wireless Network	IEEE802.11 b/g/n 2.4G
LAN	Single 10/100M RJ45
Frequency Response	20Hz to 20KHz
Power Input	DC 32V, 5A
Audio Source Input	USB 2.0, Coaxial, Analog RCA, Optical(2.1)
Audio Source Output	Analog RCA
Treble	Yes
Bass	Yes
Volume Knob	Yes
Dimensions	6.25" (L) x 5.75" (W) x 1.6" (H)
Weight	1.2 lbs.
Music Format	MP3/AAC/AAC+/ALAC/APE/WAV
Decoding	Up to 24bit/192KHz

NDAA
COMPLIANT

*Products are in compliance with NDAA Section 889 Part B Guidelines

Download the a-live™ app:



Speco Technologies is constantly developing and improving products. We reserve the right to modify product design and specifications without notice and without incurring any obligation. Spec Rev. 1/19/22