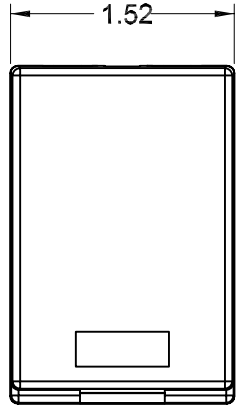


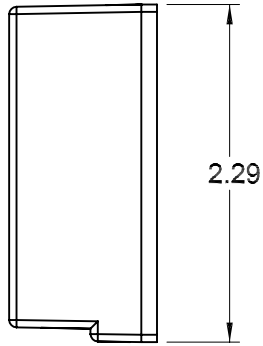
NOTES: UNLESS OTHERWISE SPECIFIED.

1. EACH ASSEMBLY IS SUPPLIED WITH A HARDWARE KIT CONSISTING OF (QTY 2 each) SCREW #6-20 X 3/4" TYPE AB SELF-TAPPING AND (QTY 1 each) DOUBLE-SIDED ADHESIVE FOAM TAPE.

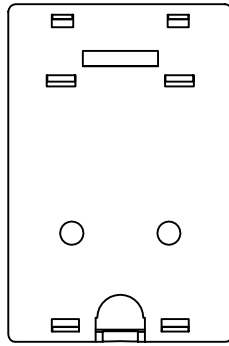
| REVISION HISTORY |     |             |         |     |         |
|------------------|-----|-------------|---------|-----|---------|
| REV              | SHT | DESCRIPTION | DATE    | ECN | CHECKED |
| A                | ALL | RELEASE NEW | 3/17/05 | NEW | JS      |



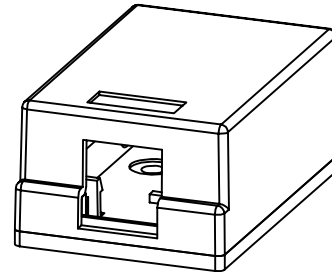
TOP VIEW



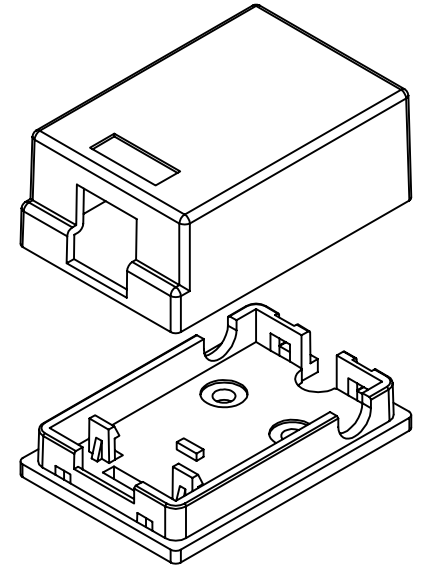
RIGHT SIDE



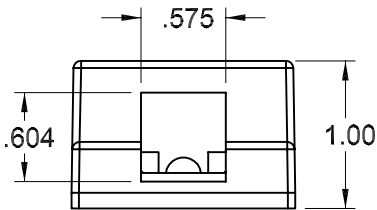
BOTTOM VIEW



ISOMETRIC VIEW



EXPLODED VIEW



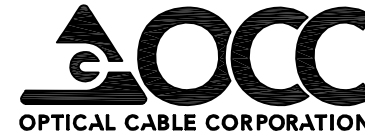
FRONT VIEW

|              |   |
|--------------|---|
| SMEK112      | SURFACE MOUNT ENCLOSURE, 1 PORT, BRIGHT WHITE, COMMERCIAL |
| SMEK101      | SURFACE MOUNT ENCLOSURE, 1 PORT, OFFICE WHITE, COMMERCIAL |
| SMEK100      | SURFACE MOUNT ENCLOSURE, 1 PORT, ELEC. IVORY, COMMERCIAL  |
| OCC PART NO. | DESCRIPTION   |

**UNCONTROLLED COPY**

UNLESS OTHERWISE SPECIFIED DIMENSIONS ARE IN INCHES.  
TOLERANCES: FRACTIONS  $\pm 1/32"$   
ANGLES  $\pm 1/2^\circ$   
3 PLACE DECIMALS  $\pm .005"$   
2 PLACE DECIMALS  $\pm .01"$

THIS DRAWING AND THE DESIGN SHOWN ARE THE PROPERTY OF OPTICAL CABLE CORPORATION AND MAY NOT BE USED AS THE BASIS FOR MANUFACTURE OR SALE WITHOUT SPECIFIC WRITTEN PERMISSION OF OPTICAL CABLE CORPORATION.



5290 Concourse Drive  
Roanoke, VA 24019  
Phone: 800-622-7711  
Fax: 540-265-0724  
www.occfiber.com



THIRD ANGLE PROJECTION

- CRITICAL DIMENSION CODE
- (F) = FUNCTION
  - (M) = MATING
  - (A) = AUDIT

MATERIAL  
THERMOPLASTIC  
UL LISTED RATING 94V-0  
FLAME RETARDANT

FINISH  
SEE NOTES, FOR COLOR  
SEE SMP SPEC# 100004

|              |            |      |         |
|--------------|------------|------|---------|
| DRAWN        | E.WETLI    | DATE | 3/17/05 |
| CHECKED      | J.SHERRILL | DATE | 3/18/05 |
| ENGINEER     | J.YANIK    | DATE | 3/17/05 |
| APPROVED     | J.HOWE     | DATE | 3/18/05 |
| PREVIOUS DWG |            |      |         |
| NEXT DWG     |            |      |         |

DWG TITLE **CUSTOMER DRAWING,  
SURFACE MOUNT ENCLOSURE,  
1 PORT, COMMERCIAL**

|      |         |     |
|------|---------|-----|
| SIZE | DWG NO. | REV |
| A    | C107255 | B   |

|              |        |        |
|--------------|--------|--------|
| FILENAME     | SCALE: | SHEET  |
| C107255B.DFT | NONE   | 1 OF 1 |