

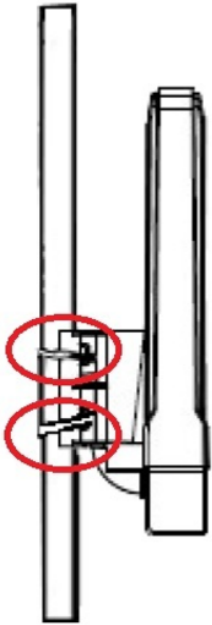
**This Wireless equipment has been pre-configured and is ready for installation.
No additional programming is required unless desired.
We highly recommend bench testing prior to on-site installation.**

Package Contents:
(2) QL-ML342LV
(2) PoE Injectors
(2) Pole Mounts
(4) Cable ties

YOU MUST USE THE PoE INJECTOR PROVIDED. DO NOT PLUG WIRELESS UNIT DIRECTLY INTO PoE SWITCH.

Mounting

Attach the Pole Mounting bracket to back of wireless device. Loop each cable tie through the top and bottom of mounting bracket to a 1" pole (not provided)



Optional Universal Antenna Mount
p/n: MNT-UAM



Change IP Address:

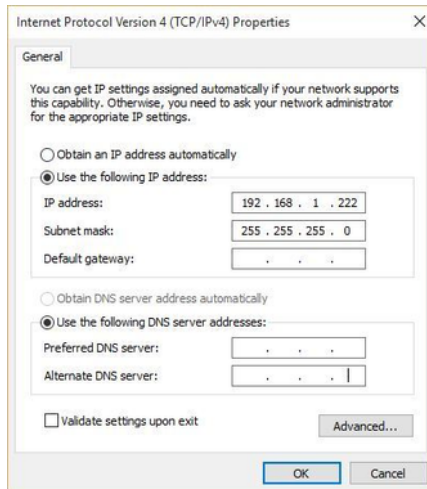
To change the IP address, login into system, click on Network, Interfaces, LAN. Locate the IPv4 address and enter the IP address desired. Click Save and Apply. The Browser should auto redirect to new IP address. If on a different subnet, you will need to change your PC IP address to match the new subnet.

Administration

There are two wireless devices in your kit. Each has been pre-configured for its specific function. The first unit is configured as an ACCESS POINT and the second unit as STATION. The ACCESS POINT should be installed at the "Head END" for physical surveillance applications or "INTERNET FEED" location for Internet or Network expansion applications. The STATION should be installed at the "Camera or far end" of the installation.

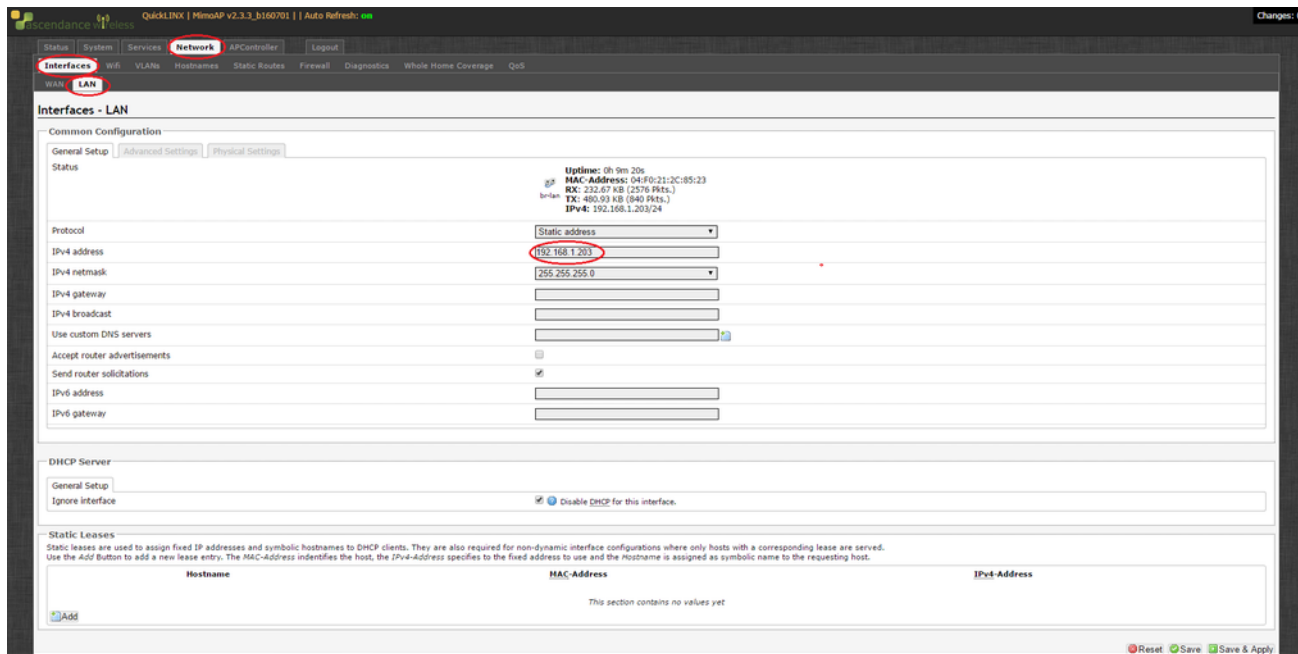
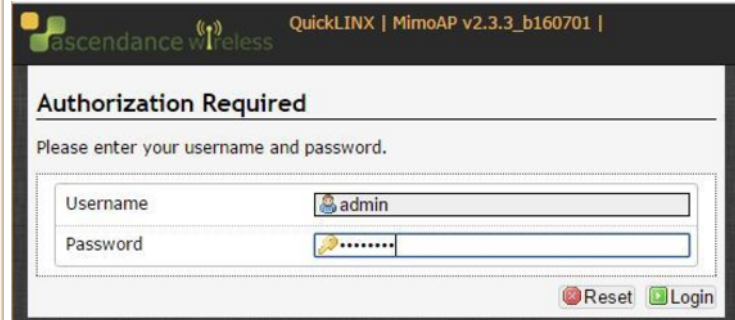
In order to access the units, your PC must be on the same subnet as the wireless units. If behind a router, make sure you IP address has been assigned correctly. If no router is involved, statically assign your PC IP address to same subnet, but to a non-conflicting IP address. See screen shot below. Consult your IT network administrator for assistance on setting up your PC IP address if necessary:

Sample Static IP Address



Login Screen

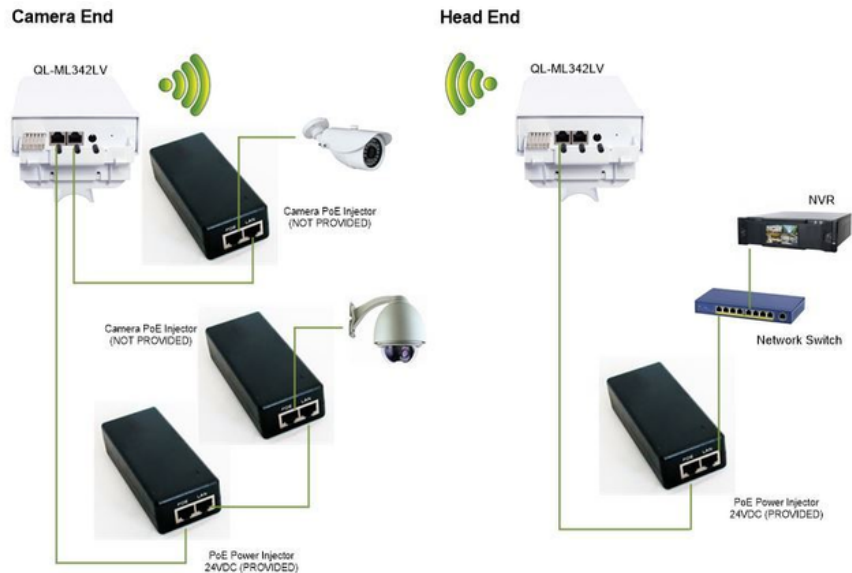
To login to the unit, open a Browser (Chrome recommended) and enter the IP address:
Access Point: 192.168.1.101 Station: 192.168.1.102
User name: Admin Password: password



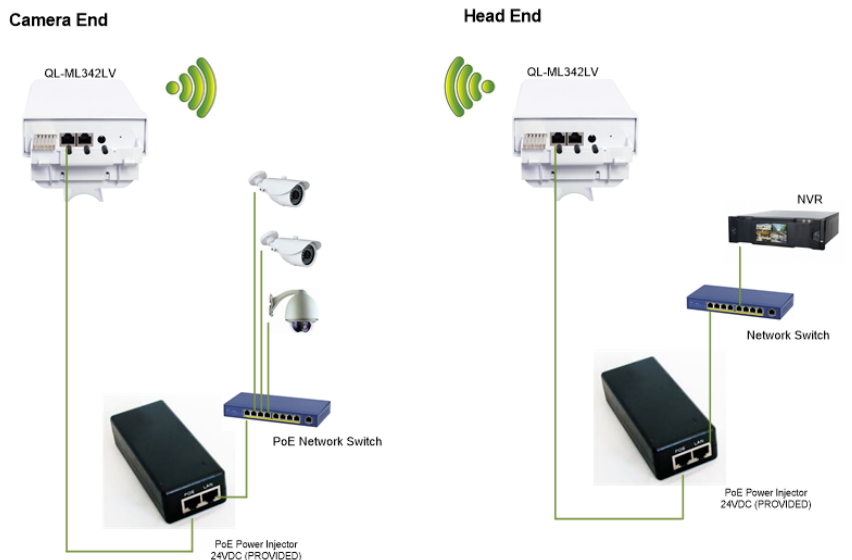
Typical 1 Camera Installation



Typical 2 Camera Installation



Typical Multi Camera PoE Switch Installation



LED Indicators	Name	Normal Status
	Signal Strength 3	On/Flashing (Green)
	Signal Strength 2	On (Light green)
	Signal Strength 1	On (Yellow)
	Devices Associated	On (Red)
	Ethernet	On/Flashing (Green)
	Power	On (Green)



www.AscendanceWireless.com
support@ascendancewireless.com
+1 (530) 887-8300